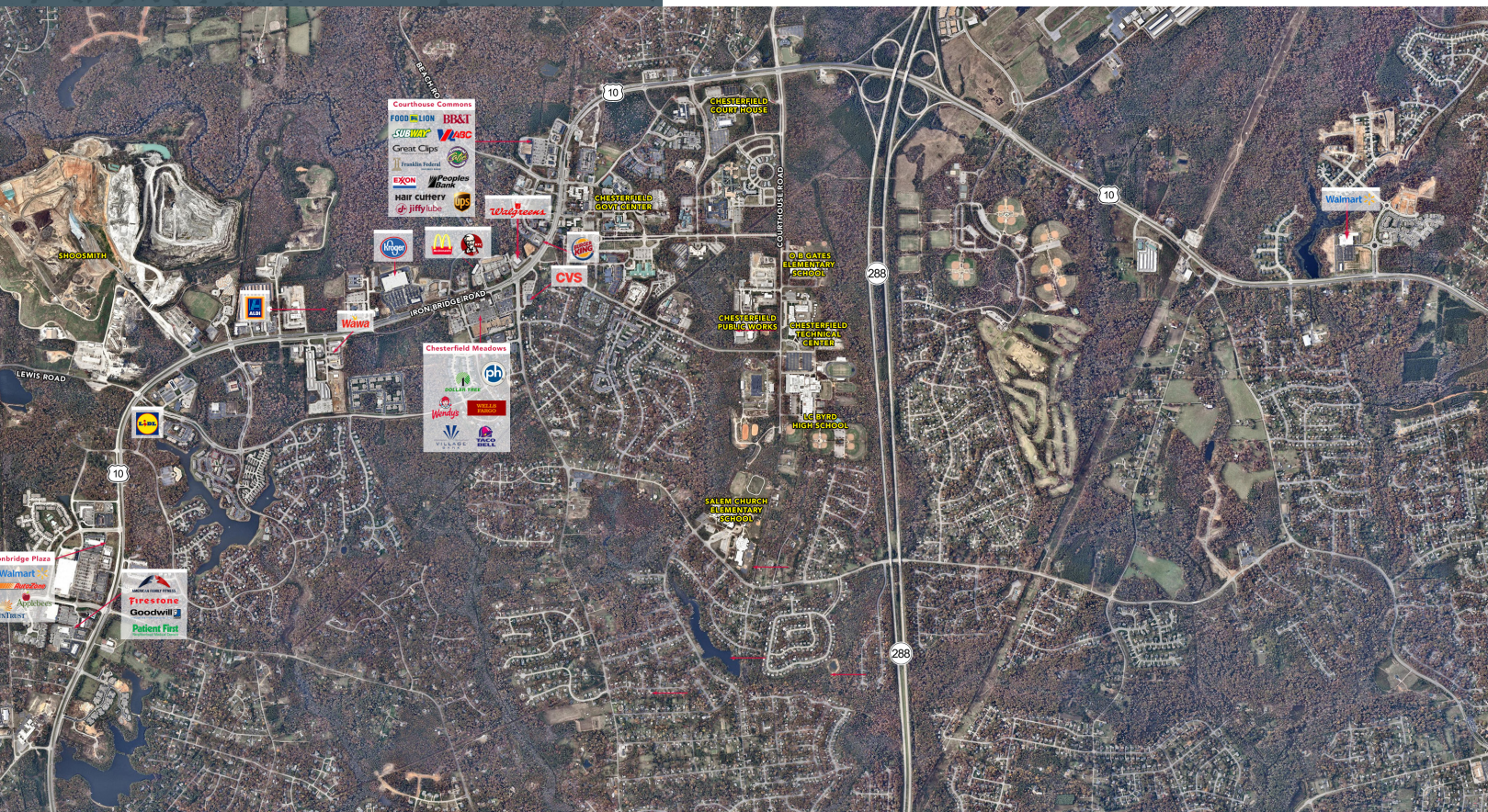


# COURTHOUSE LANDING

# COURTHOUSE LANDING



## Chesterfield's **New Downtown**



**Courthouse Landing** will be a landmark development at the gateway to Chesterfield County. The 122 acre site is located at the doorstep to Chesterfield County's Courthouse Business District. Offering great access and visibility the project is positioned at the intersection of Iron Bridge Road (Rt 10) and Courthouse Road at the Route 288 interchange. The upscale mixed use development will integrate retail, residential (high density apartments and town homes), office, hotel and outdoor recreational areas, providing residents and customers a sense of Urban Living in a Suburban setting!

## CHESTERFIELD'S DOWNTOWN DESTINATION

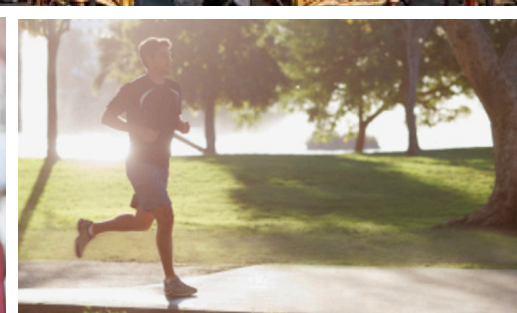
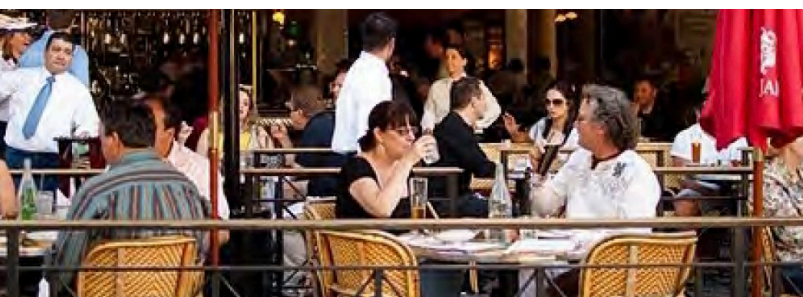
### PROJECT

- ± 270,000SF Retail
- ± 65,000SF MOB
- ± 65,000SF Office
- ± 130 Rooms Hotel
- ± 300 units Apartment Homes
- ± 140 units Town Homes

### COURTHOUSE SUB-MARKET



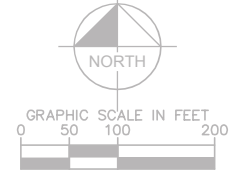
### INTERSTATE ACCESSIBILITY





Welcome to...

# Courthouse Landing



STATE ROUTE 288



**Traffic Counts:**  
Rt 288 - 56,000 VPD  
Iron Bridge Road - 43,000 VPD



**Daytime Employees:**  
Chesterfield County Government Center - 4,000  
Five minute drive time - 17,410



Jeff Doxey, CCIM  
804.363.0332  
jeffdoxey@naidominion.com  
www.naidominion.com