



Annual School Census of Sri Lanka

Summary Report -2022

Ministry of Education



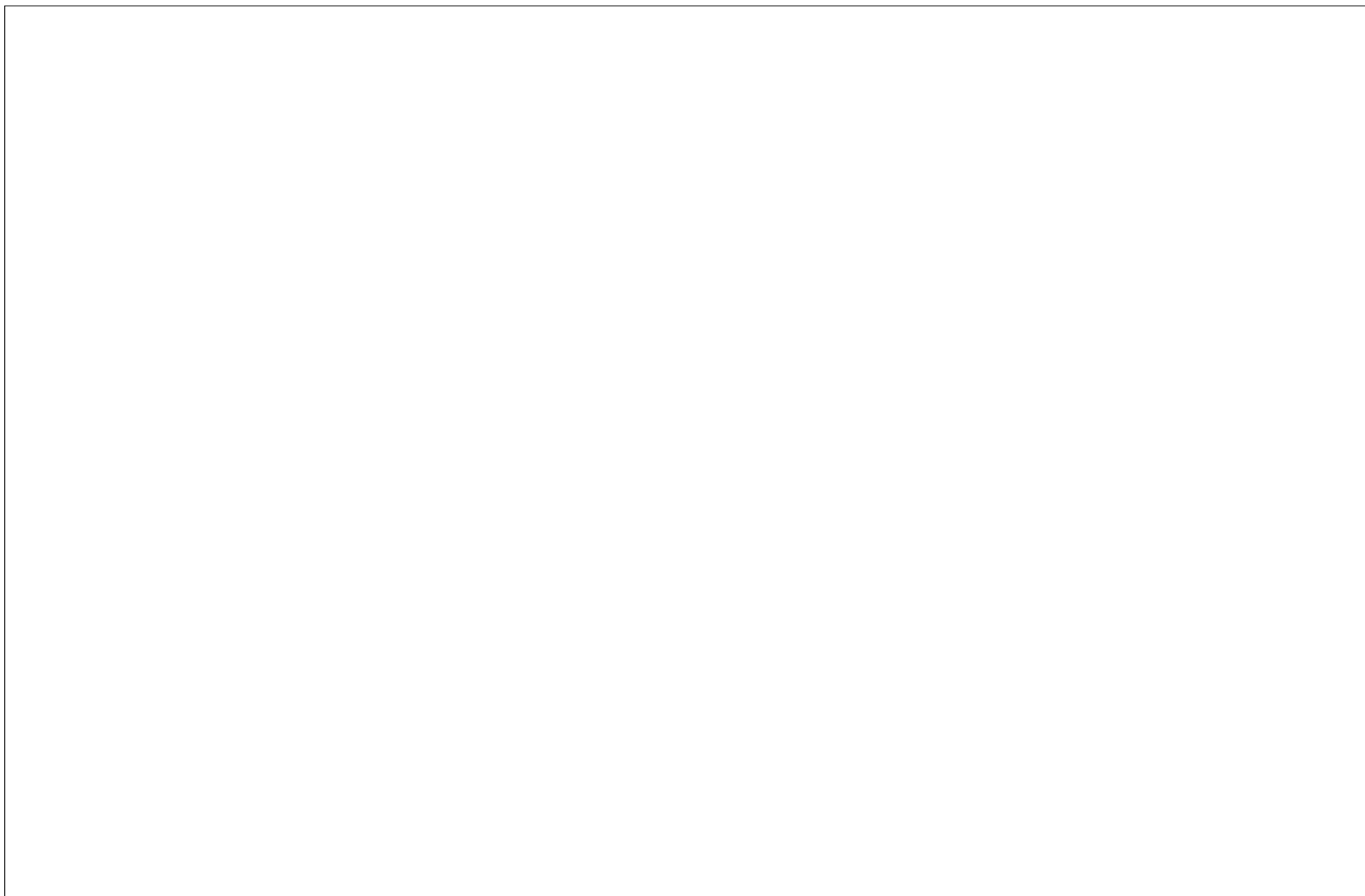
Prepared by Statistics Branch of Ministry of Education of Sri Lanka

List of Statistical Tables	
Table	Page
Content	i
School Census - 2022- Summary Statistics of All Government Schools	
1. At a Glance - Basic Statistics of Government Schools - 2022	1
2.1 Administrative Structure of Education by Province - 2022	2
2.2 Administrative Structure of Education by District - 2022	2
3. Summary Statistics of Government Schools - 2022	3
4. Summary Statistics of Government Schools by Students - 2022	5
5. Summary Statistics of Government Schools by Teachers - 2022	6
6. Comparison of Basic Statistics of National and Provincial Schools -2022	7
7. Grade 1 Admission Related Statistics of Government Schools -2022	8
8. Government Schools by Size of Student Population -2022	9
9. Government Schools by Size of Teacher Population -2022	10
10. Grade-wise Students of Government Schools by Sex and Medium of Study -2022	11
11. Teachers of Govt. Schools by Qualification Classification -2022	13
12. Student Teacher Ratios (STRs) of Government Schools -2022	14
13. Basic Statistics of National and Provincial Schools by Province - 2022	15
14. Basic Statistics of National and Provincial Schools by District - 2022	16
15. Basic Statistics of Government Schools by Zones -2022	17-20
16. Comparison of Basic Statistics of National and Provincial Schools by Zones - 2022	21-24
Summary Statistics of Other Schools (Private, Special and Pirivena)	
17. Basic Statistics of Private Schools by Province and District -2022	25
18. Basic Statistics of Special Schools by Province and District -2022	26
19. <i>Basic Statistics of Piriven (Temple Schools) by District -2022</i>	27

School Census - 2022

Summary Statistics of All Government Schools





1. At a Glance - Basic Statistics of Government Schools -2022

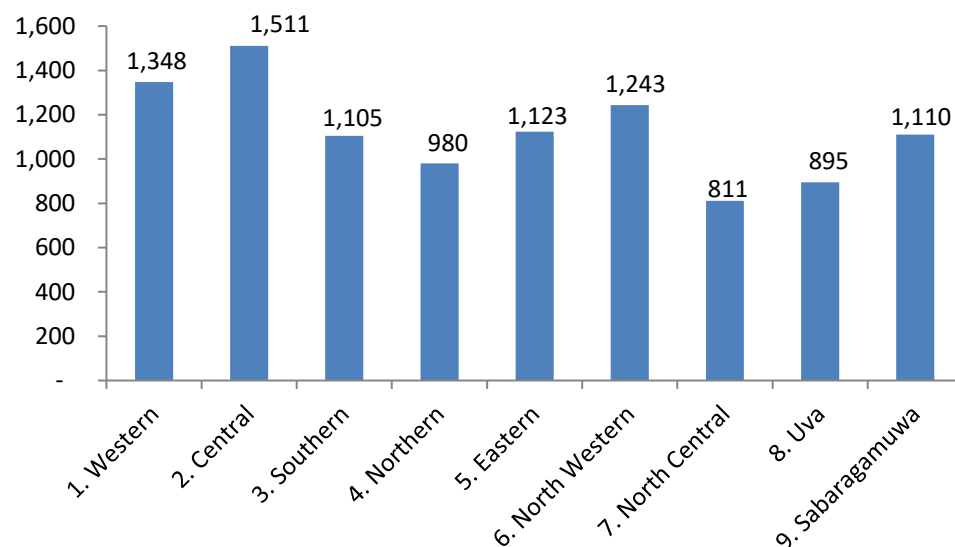
Schools					
All Government Schools	10,126	Schools by Language medium/s of Instruction		Schools by Student Population	
National Schools	396	Sinhala Medium Only	6,290	1-50 Students	1,473
Provincial Schools	9,730	Tamil Medium Only	3,032	51-100 Students	1,571
Type of School		Sinhala and Tamil Mediums	39	101-200 Students	2,160
1AB Schools	1,008	Sinhala and Bilingual(S/E) Mediums	563	201-500 Students	2,675
1C Schools	1,951	Tamil and Bilingual(T/E) Mediums	168	501-1,000 Students	1,337
Type 2 Schools	3,221	Trilingual (Sinhala, Tamil and Bilingual (S/E &/or T/E)) Mediums	34	1,001-1,500 Students	393
Type 3 Schools	3,946	School by Fuctional Grade Span		1,501-2,000 Students	216
School by Gender of the School		Grade 1-5	3,883	2,001-3,000 Students	199
Boys Schools	147	Grade 1-8	63	3,001-4,000 Students	68
Girls Schools	239	Grade 1-11	3,202	More than 4,000 Students	34
Mixed Schools	9,740	Grade 1-13	1,986		
		Grade 6-11	19		
		Grade 6-13	973		
Students					
All Students	3,969,597	Students by Language medium/s study			
Male Students	1,969,836	Sinhala Medium	2,900,802		
Female Students	1,999,761	Tamil Medium	955,060		
National Schools	834,586	Bilingual (S/E and T/E) Medium	113,735		
Provincial Schools	3,135,011	Students by Grade Cycle of Studying			
Students by Type of School		Primary Cycle (Grd 1-5)	1,567,689		
1AB Schools	1,575,538	Junior Secondary Cycle (Grd 6-9)	1,318,284		
1C Schools	1,043,744	Senior Secondary O/L Cycle (Grd 10-11)	655,729		
Type 2 Schools	716,221	Senior Secondary A/L Cycle (Grd 12-13)	420,577		
Type 3 Schools	634,094	Special Education Units	7,318		
Grade 1 Admissions					
Grade 1 Admissions	292,517	Grade 1 Admissions by Type of School			
Male Students	148,559	Sinhala Medium	216,036	1AB Schools	46,824
Female Students	143,958	Tamil Medium	76,307	1C Schools	65,465
National Schools	27,057	Bilingual	174	Type 2 Schools	60,329
Provincial Schools	265,460			Type 3 Schools	119,899

Teachers & Principals	
All Teachers	236,738
Male Teachers	56,817
Female Teachers	179,921
Graduate Trained Teachers	101,603
Graduate Teachers	36,736
Trained Teachers	93,302
Untrained Teachers	4,731
Other Teachers	366
Teachers by Type of School	
1AB Schools	80,186
1C Schools	63,921
Type 2 Schools	57,509
Type 3 Schools	35,122

2.1: Administrative Structure of Education by Province -2022

Province	No. of Edu. Zones	No. of Edu. Divisions	All Govt. Schools	National Schools	Provincial Schools
1. Western	11	38	1,348	79	1,269
2. Central	15	40	1,511	56	1,455
3. Southern	11	39	1,105	70	1,035
4. Northern	13	35	980	24	956
5. Eastern	17	48	1,123	42	1,081
6. North Western	8	31	1,243	39	1,204
7. North Central	8	30	811	17	794
8. Uva	10	23	895	38	857
9. Sabaragamuwa	7	28	1,110	31	1,079
Total	100	312	10,126	396	9,730

F1: No. of All Govt. Schools by Province -2022



2.2: Administrative Structure of Education by District -2022

Administrative District	No. of Edu. Zones	No. of Edu. Divisions	All Govt. Schools	National Schools	Provincial Schools
11. Colombo	4	14	396	39	357
12. Gampaha	4	13	535	20	515
13. Kalutara	3	11	417	20	397
21. Kandy	6	18	650	36	614
22. Matale	4	11	312	12	300
23. Nuwara Eliya	5	11	549	8	541
31. Galle	4	15	427	30	397
32. Matara	4	14	358	23	335
33. Hambantota	3	10	320	17	303
41. Jaffna	5	15	447	8	439
42. Mannar	2	5	131	5	126
43. Vavuniya	2	5	171	5	166
44. Mullaitivu	2	6	127	3	124
45. Kilinochchi	2	4	104	3	101
51. Batticaloa	5	14	365	13	352
52. Ampara	7	21	443	17	426
53. Trincomalee	5	13	315	12	303
61. Kurunegala	6	22	871	31	840
62. Puttalam	2	9	372	8	364
71. Anuradhapura	5	22	559	8	551
72. Polonnaruwa	3	8	252	9	243
81. Badulla	6	14	604	27	577
82. Moneragala	4	9	291	11	280
91. Ratnapura	4	16	594	16	578
92. Kegalle	3	12	516	15	501
Total	100	312	10,126	396	9,730

Source : School Census 2022

Govt. = Government

Edu. = Education

Reference Date: 2023-03-01

3. Summary Statistics of Government Schools -2022

Category	No. of Schools	%	No. of Students	%	No. of Teachers	%
All Government Schools	10,126		3,969,597		236,738	
Level of School						
National Schools	396	3.9	834,586	21.0	42,196	17.8
Provincial Schools	9,730	96.1	3,135,011	79.0	194,542	82.2
Type of School						
1AB Schools	1,008	10.0	1,575,538	39.7	80,186	33.9
1C Schools	1,951	19.3	1,043,744	26.3	63,921	27.0
Type 2 Schools	3,221	31.8	716,221	18.0	57,509	24.3
Type 3 Schools	3,946	39.0	634,094	16.0	35,122	14.8
School by Fuctional Grade Span						
Grade 1-5	3,883	38.3	627,538	15.8	34,547	14.6
Grade 1-8	63	0.6	6,556	0.2	575	0.2
Grade 1-11	3,202	31.6	713,498	18.0	57,267	24.2
Grade 1-13	1,986	19.6	1,692,432	42.6	92,189	38.9
Grade 6-11	19	0.2	2,723	0.1	242	0.1
Grade 6-13	973	9.6	926,850	23.3	51,918	21.9

1AB - Schools having Science Stream classes in Advanced Level
 1C - Schools having Advanced Level classes Other than Science Stream
 Type 2 - School Having classes only up to Grade 11
 Type 3 - School Having classes up to Grade 5 or Grade 8

Category	No. of Schools	%	No. of Students	%	No. of Teachers	%
School by Gender of the School						
Boys Schools	147	1.5	244,551	6.2	12,000	5.1
Girls Schools	239	2.4	367,564	9.3	17,789	7.5
Mixed Schools	9,740	96.2	3,357,482	84.6	206,949	87.4
Ethnicity of the School						
Sinhala Schools	6,886	68.0	2,986,388	75.2	171,292	72.4
Tamil Schools	2,298	22.7	554,713	14.0	40,711	17.2
Muslim Schools	942	9.3	428,496	10.8	24,735	10.4
Schools by Language medium/s of Instruction						
Sinhala Medium	6,290	62.1				
Tamil Medium	3,032	29.9				
Sinhala and Tamil Mediums	39	0.4				
Sinhala and Bilingual(S/E) Mediums	563	5.6				
Tamil and Bilingual(T/E) Mediums	168	1.7				
Trilingual (Sinhala, Tamil and Bilingual (S/E and/or T/E) Mediums)	34	0.3				
Plantation Estate Schools						
Located Outside the Estate	30	0.3	24,447	0.6	1,360	0.6
Located Inside the Estate	833	8.2	181,238	4.6	12,281	5.2

Source : School Census 2022

Prepared by Statistics Branch of MOE

3. Summary Statistics of Government Schools -2022

Category	No. of Schools	%	No. of Students	%	No. of Teachers	%
School by Local Government Area						
Municipal Council	627	6.2	648,523	16.3	33,905	14.3
Urban Council (UC) Area	412	4.1	372,861	9.4	19,084	8.1
Pradesiya Sabha (PS) Area	9,087	89.7	2,948,213	74.3	183,749	77.6
Schools by Student Population						
1-50 Students	1,473	14.5	43,986	1.1	8,744	3.7
51-100 Students	1,571	15.5	116,033	2.9	15,033	6.4
101-200 Students	2,160	21.3	315,016	7.9	29,285	12.4
201-500 Students	2,675	26.4	853,716	21.5	55,225	23.3
501-1,000 Students	1,337	13.2	921,706	23.2	48,747	20.6
1,001-1,500 Students	393	3.9	473,744	11.9	23,346	9.9
1,501-2,000 Students	216	2.1	372,829	9.4	17,800	7.5
2,001-3,000 Students	199	2.0	480,317	12.1	21,863	9.2
3,001-4,000 Students	68	0.7	229,320	5.8	9,938	4.2
More than 4,000 Students	34	0.3	162,930	4.1	6,757	2.9

Category	No. of Schools	%	No. of Students	%	No. of Teachers	%
Schools by A/L Stream						
Bio Science	974		50,718	12.1		
Physical Science	955		47,833	11.4		
Arts	2,946		172,415	41.0		
Commerce	1,855		88,184	21.0		
Technology	520		48,194	11.5		
Other*	352		13,233	3.1		
Schools by No. of Teachers						
Less than 10 Teachers	3,155	31.2	225,325	5.7	19,544	8.3
10-25 Teachers	4,331	42.8	1,014,851	25.6	73,862	31.2
26-50 Teachers	1,677	16.6	1,009,381	25.4	58,567	24.7
51-100 Teachers	697	6.9	948,470	23.9	48,332	20.4
More than 100 Teachers	266	2.6	771,570	19.4	36,433	15.4

Source : School Census 2022
Prepared by Statistics Branch of MOE

Other* - Included Common stream and vocational stream (13 years program)

*** A/L Students

4. Summary Statistics of Government Schools by Students - 2022

Category	Total Students	%	Male	%	Female	%
All Government Schools	3,969,597		1,969,836	49.6	1,999,761	50.4
Level of School						
National Schools	834,586	21.0	426,748	51.1	407,838	48.9
Provincial Schools	3,135,011	79.0	1,543,088	49.2	1,591,923	50.8
Students by Grade of Studying						
Primary Cycle (Grade 1-5)	1,567,689	39.5	793,977	50.6	773,712	49.4
Junior Secondary Cycle (Grade 6-9)	1,318,284	33.2	661,189	50.2	657,095	49.8
Senior Secondary O/L Cycle (Grade 10-11)**	655,729	16.5	325,547	49.6	330,182	50.4
Senior Secondary A/L Cycle (Grade 12-13)	420,577	10.6	184,585	43.9	235,992	56.1
Special Edu. Units	7,318	0.2	4,538	62.0	2,780	38.0
Ethnicity of the School Established						
Sinhala Schools	2,986,388	75.2	1,486,256	49.8	1,500,132	50.2
Tamil Schools	554,713	14.0	275,821	49.7	278,892	50.3
Muslim Schools	428,496	10.8	207,759	48.5	220,737	51.5
Plantation Estate Schools						
Located outside the estate	24,447	0.6	12,377	50.6	12,070	49.4
Located inside the estate	181,238	4.6	89,398	49.3	91,840	50.7

Category	Total Students	%	Male	%	Female	%
Type of School						
1AB Schools	1,575,538	39.7	766,962	48.7	808,576	51.3
1C Schools	1,043,744	26.3	509,655	48.8	534,089	51.2
Type 2 Schools	716,221	18.0	366,912	51.2	349,309	48.8
Type 3 Schools	634,094	16.0	326,307	51.5	307,787	48.5
Students by Language medium/s study						
Sinhala Medium Only	2,900,802	73.1	1,447,218	49.9	1,453,584	50.1
Tamil Medium Only	955,060	24.1	472,555	49.5	482,505	50.5
Bilingual Medium ***	113,735	2.9	50,063	44.0	63,672	56.0
Students by A/L Stream						
Bio Science	50,718	11.9	13,979	27.6	36,739	72.4
Physical Science	47,833	11.2	29,516	61.7	18,317	38.3
Arts	172,415	40.4	56,056	32.5	116,359	67.5
Commerce	88,184	20.7	40,574	46.0	47,610	54.0
Technology	48,194	11.3	35,919	74.5	12,275	25.5
Other*	13,233	3.1	8,541	64.5	4,692	35.5

Remarks: Other* - Included Common stream and vocational stream (13 years program),
 ** - Grade 11 Repeaters are included, ***-Included both Sinhala-English & Tamil-English

5. Summary Statistics of Government Schools by Teachers - 2022

Category	Total Teachers	% of Total	Male	Male %	Female	Female %	Category	Total Teachers	% of Total	Male	Male %	Female	Female %
All Govt. Schools	236,738		56,817	24.0	179,921	76.0	Language Medium of the Appointment of the Teachers						
							Sinhala Medium	150,012	63.4	34,212	22.8	115,800	77.2
Level of School							Tamil Medium	58,696	24.8	17,952	30.6	40,744	69.4
National Schools	42,196	17.8	10,815	25.6	31,381	74.4	English Medium	8,416	3.6	1,380	16.4	7,036	83.6
Provincial Schools	194,542	82.2	46,002	23.6	148,540	76.4	No Medium**	19,614	8.3	3,273	16.7	16,341	83.3
Type of School							School by Local Government Area						
1AB Schools	80,186	33.9	21,227	26.5	58,959	73.5	MC Area	33,905	14.3	7,158	21.1	26,747	78.9
1C Schools	63,921	27.0	15,667	24.5	48,254	75.5	UC Area	19,084	8.1	4,138	21.7	14,946	78.3
Type 2 Schools	57,509	24.3	13,443	23.4	44,066	76.6	PS Area	183,749	77.6	45,521	24.8	138,228	75.2
Type 3 Schools	35,122	14.8	6,480	18.4	28,642	81.6							
							Teachers by Qualification Classification						
School by Gender of the School							Graduate Trained Teachers	101,603	42.9	26,496	26.1	75,107	73.9
Boys Schools	12,000	5.1	3,518	29.3	8,482	70.7	Graduate Teachers	36,736	15.5	9,086	24.7	27,650	75.3
Girls Schools	17,789	7.5	2,539	14.3	15,250	85.7	Trained Teachers	93,302	39.4	20,267	21.7	73,035	78.3
Mixed Schools	206,949	87.4	50,760	24.5	156,189	75.5	Untrained Teachers	4,731	2.0	896	18.9	3,835	81.1
							Other Teachers	366	0.2	72	19.7	294	80.3
Ethnicity of the School Established							Section of the Teaching of Major Subject						
Sinhala Schools	171,292	72.4	37,331	21.8	133,961	78.2	Primary (1-5) Grades	69,209	29.2	7,909	11.4	61,300	88.6
Tamil Schools	40,711	17.2	12,061	29.6	28,650	70.4	Secondary (6-11) Grades	112,330	47.4	27,446	24.4	84,884	75.6
Muslim Schools	24,735	10.4	7,425	30.0	17,310	70.0	A/L (12-13) Grades	33,320	14.1	10,961	32.9	22,359	67.1
							No Specific Section*	21,879	9.2	10,501	48.0	11,378	52.0
Plantation Estate Schools							No Specific Section* - Academic staff involving in Administration and management activities and other activities such as Office works, Library, ICT lab, Student Counciling, Sports activities and Special education and etc.,						
Outside the estate	1,360	0.6	323	23.8	1,037	76.3	No Medium** - Teacher who are appointment as English (Primary English, Secondary English, English Litrerature, A/L English and A/L General English) teachers are considered as No medium						
Inside the estate	12,281	5.0	3,596	29.3	8,685	70.7							

Source : School Census 2022

Prepared by Statistics Branch of MOE

6. Comparison of Basic Statistics of National and Provincial Schools -2022

Subject	All Govt. Schools	National Schools						Provincial Schools					
		Total	% of Total	No. of Males	Male %	No. of Females	Female %	Total	% of Total	No. of Males	Male %	No. of Females	Female %
All Government Schools													
No. of Schools	10,126	396	3.9					9,730	96.1				
No. of Students	3,969,597	834,586	21.0	426,748	51.1	407,838	48.9	3,135,011	79.0	1,543,088	49.2	1,591,923	50.8
No. of Teachers	236,738	42,196	17.8	10,815	25.6	31,381	74.4	194,542	82.2	46,002	23.6	148,540	76.4
Grade 1 Admissions	292,517	27,057	9.2	14,223	52.6	12,834	47.4	265,460	90.8	134,336	50.6	131,124	49.4
Schools by Type of School													
1AB Schools													
No. of Schools	1,008	365	36.2					643	63.8				
No. of Students	1,575,538	809,754	51.4	414,411	51.2	395,343	48.8	765,784	48.6	352,551	46.0	413,233	54.0
No. of Teachers	80,186	40,536	50.6	10,380	25.6	30,156	74.4	39,650	49.4	10,847	27.4	28,803	72.6
Grade 1 Admissions	46,824	26,152	55.9	13,812	52.8	12,340	47.2	20,672	44.1	9,226	44.6	11,446	55.4
1C Schools													
No. of Schools	1,951	30	1.5					1,921					
No. of Students	1,043,744	24,819	2.4	12,324	49.7	12,495	50.3	1,018,925	97.6	497,331	48.8	521,594	51.2
No. of Teachers	63,921	1,650	2.6	431	26.1	1,219	73.9	62,271	97.4	15,236	24.5	47,035	75.5
Grade 1 Admissions	65,465	905	1.4	411	45.4	494	54.6	64,560	98.6	32,442	50.3	32,118	49.7
Type 2 Schools													
No. of Schools	3,221	1	0.0					3,220					
No. of Students	716,221	13	0.0	13	100.0	-	-	716,208	100.0	366,899	51.2	349,309	48.8
No. of Teachers	57,509	10	0.0	4	40.0	6	60.0	57,499	100.0	13,439	23.4	44,060	76.6
Grade 1 Admissions	60,329	-	-	-	-	-	-	60,329	100.0	30,993	51.4	29,336	48.6
Type 3 Schools													
No. of Schools	3,946	-	-					3,946					
No. of Students	634,094	-	-	-	-	-	-	634,094	100.0	326,307	51.5	307,787	48.5
No. of Teachers	35,122	-	-	-	-	-	-	35,122	100.0	6,480	18.4	28,642	81.6
Grade 1 Admissions	119,899	-	-	-	-	-	-	119,899	100.0	61,675	51.4	58,224	48.6

Source : School Census 2022

Prepared by Statistics Branch of MOE

7. Grade 1 Admission Related Statistics of Government Schools -2022

Subject	Schools Have Grade 1	Grd 1 Students	% of Total	Grd 1 Male Students	Male %	Grd 1 Female Students	Female %	NO Grade 1 Applications/ Admissions
All Government Schools	9,131	292,517		148,559	50.8	143,958	49.2	104
Level of School								
National Schools	184	27,057	9.2	14,223	52.6	12,834	47.4	0
Provincial Schools	8,947	265,460	90.8	134,336	50.6	131,124	49.4	104
Type of School								
1AB Schools	391	46,824	16.0	23,038	49.2	23,786	50.8	0
1C Schools	1,592	65,465	22.4	32,853	50.2	32,612	49.8	0
Type 2 Schools	3,202	60,329	20.6	30,993	51.4	29,336	48.6	26
Type 3 Schools	3,946	119,899	41.0	61,675	51.4	58,224	48.6	78
Language medium of study								
Sinhala Medium*	6,163	216,210	73.9	109,984	50.9	106,226	49.1	59
Tamil Medium	2,968	76,307	26.1	38,575	50.6	37,732	49.4	45
Ethnicity of the School Established								
Sinhala Schools	6,156	215,491	73.7	109,661	50.9	105,830	49.1	59
Tamil Schools	2,123	41,108	14.1	20,961	51.0	20,147	49.0	43
Muslim Schools	852	35,918	12.3	17,937	49.9	17,981	50.1	2
School by Local Government Area								
MC/UC Area	902	60,073	20.5	30,476	50.7	29,597	49.3	10
PS Area	8,229	232,444	79.5	118,083	50.8	114,361	49.2	94
Schools by Student Population								
1-50 Students	1,468	7,760	2.7	3,994	51.5	3,766	48.5	96
51-100 Students	1,552	16,928	5.8	8,765	51.8	8,163	48.2	4
101-200 Students	2,100	36,165	12.4	18,644	51.6	17,521	48.4	4
201-500 Students	2,420	79,099	27.0	40,693	51.4	38,406	48.6	
501-1,000 Students	1,022	74,600	25.5	37,595	50.4	37,005	49.6	
More than 1,000 Students	569	77,965	26.7	38,868	49.9	39,097	50.1	

Source : School Census 2022

Prepared by Statistics Branch of MOE

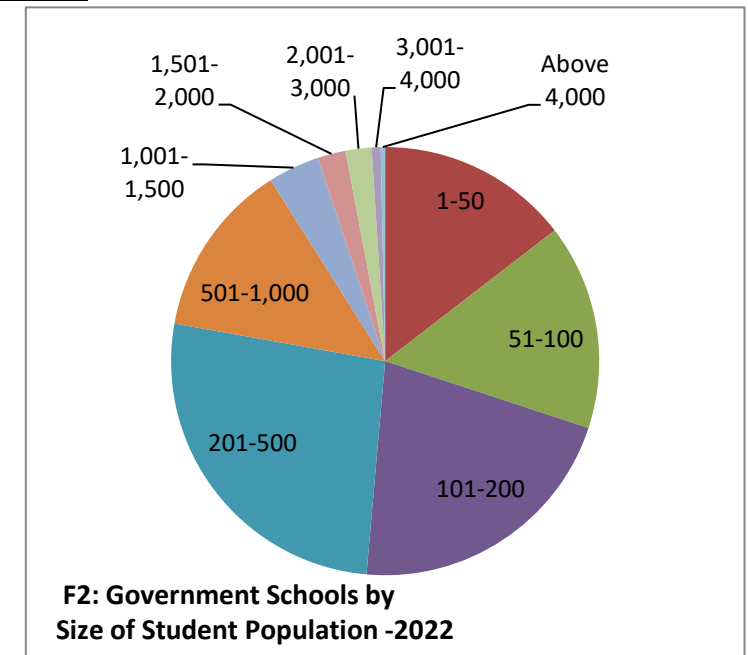
8. Government Schools by Size of Student Population -2022

Student Population	Level of School		Type of School				Total	%
	National	Provincial	1AB	1C	Type 2	Type 3		
1-50	1	1,472			140	1,333	1,473	14.5
51-100		1,571		34	556	981	1,571	15.5
101-200		2,160	7	200	1,188	765	2,160	21.2
201-500	12	2,663	107	886	1,144	538	2,675	26.3
501-1,000	59	1,278	254	643	154	286	1,337	13.2
1,001-1,500	67	326	199	134	23	37	393	3.9
1,501-2,000	70	146	163	38	9	6	216	2.1
2,001-3,000	106	93	178	16	5		199	2.0
3,001-4,000	49	19	66		2		68	0.7
Above 4,000	32	2	34				34	0.3

Student Population	Grade Span						Total
	Grd 1-5	Grd 1-8	Grd 1-11	Grd 1-13	Grd 6-11	Grd 6-13	
1-50	1,316	17	135		5		1,473
51-100	961	20	549	22	7	12	1,571
101-200	746	19	1,184	151	4	56	2,160
201-500	532	6	1,142	741	2	252	2,675
501-1,000	285	1	153	584	1	313	1,337
1,001-1,500	37		23	175		158	393
1,501-2,000	6		9	112		89	216
2,001-3,000			5	124		70	199
3,001-4,000			2	49		17	68
Above 4,000				28		6	34

Source : School Census 2022

Prepared by Statistics Branch of MOE



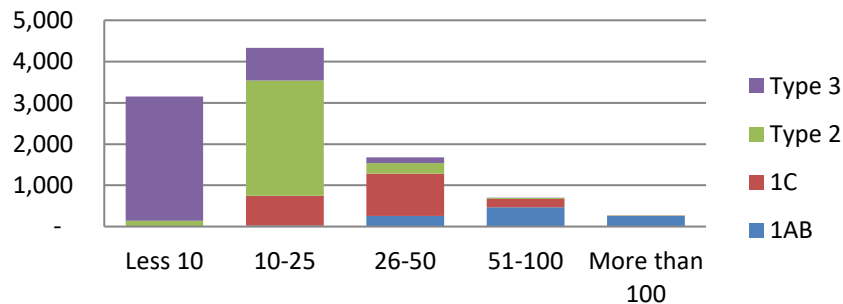
9. Government Schools by Size of Teacher Population -2022

No of Teachers	Level of School		Type of School				Total	%
	National	Provincial	1AB	1C	Type 2	Type 3		
Less 10		3,156		1	140	3,015	3,156	31.2
10-25	2	4,328	23	725	2,796	786	4,330	42.8
26-50	27	1,650	256	1,023	259	139	1,677	16.6
51-100	164	533	469	198	24	6	697	6.9
More than 100	203	63	260	4	2		266	2.6

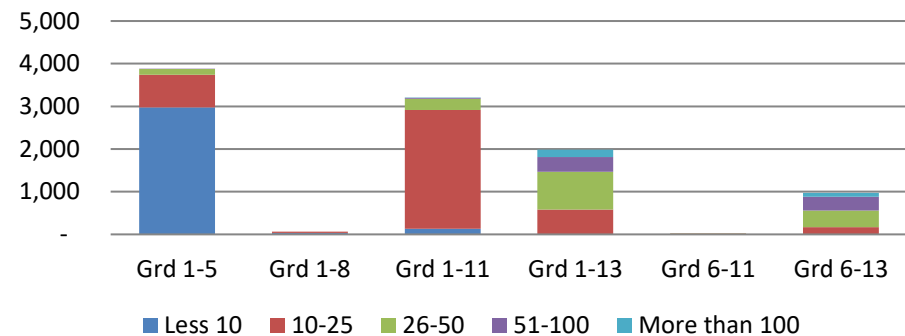
No of Teachers	Grade Span						Total
	Grd 1-5	Grd 1-8	Grd 1-11	Grd 1-13	Grd 6-11	Grd 6-13	
Less 10	2,979	36	133	1	7		3,156
10-25	759	27	2,785	580	11	168	4,330
26-50	139		258	889	1	390	1,677
51-100	6		24	340		327	697
More than 100			2	176		88	266

Source : School Census 2022

F3: Schools by Type of School and No. of Teachers - 2022



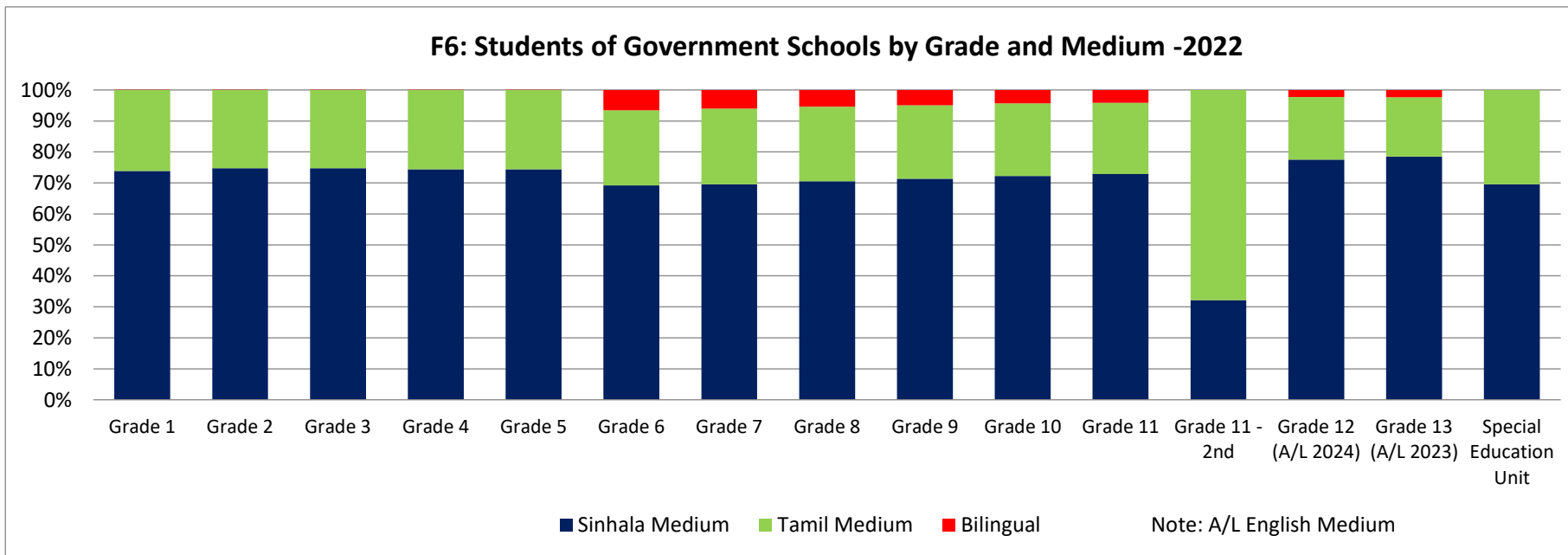
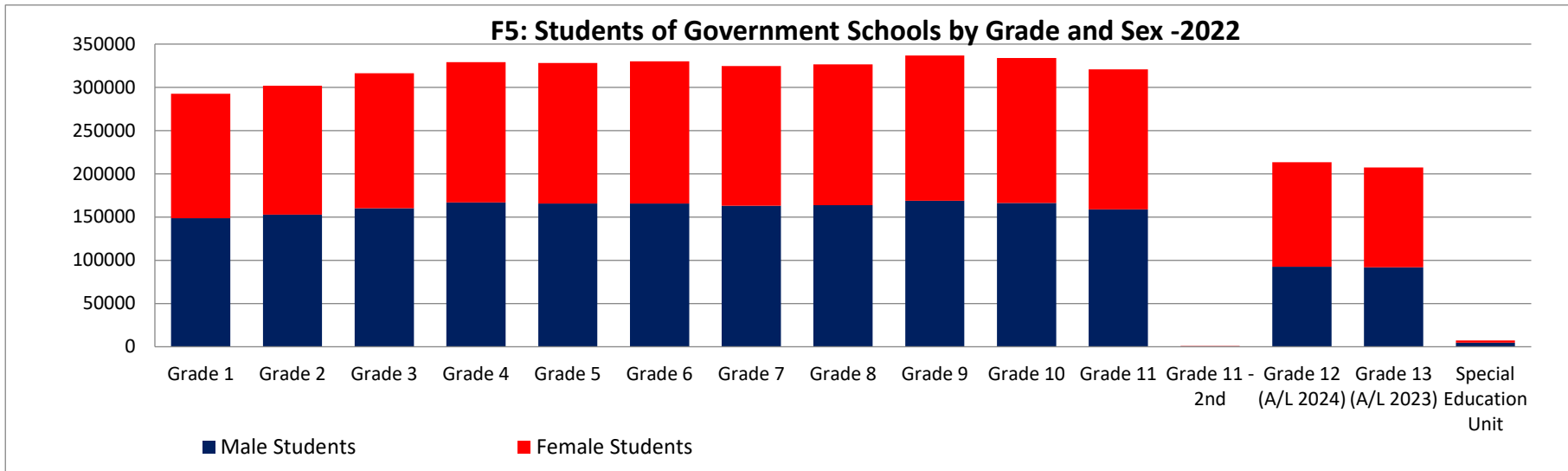
F4: Schools by Grade Span of the School and No. of Teachers -2022



10. Grade-wise Students of Government Schools by Sex and Medium of Study -2022											
Grade	Total Students	Male Students	%	Female Students	%	Sinhala Medium	%	Tamil Medium	%	Bilingual Medium	%
Grade 1	292,517	148,559	50.8	143,958	49.2	216,036	73.9	76,307	26.1	174	0.1
Grade 2	301,734	152,750	50.6	148,984	49.4	225,496	74.7	76,107	25.2	131	0.0
Grade 3	316,324	160,050	50.6	156,274	49.4	236,460	74.8	79,716	25.2	148	0.0
Grade 4	329,043	166,925	50.7	162,118	49.3	244,811	74.4	84,149	25.6	83	0.0
Grade 5	328,071	165,693	50.5	162,378	49.5	244,037	74.4	83,953	25.6	81	0.0
Primary Cycle (Grd 1-5)	1,567,689	793,977	50.6	773,712	49.4	1,166,840	74.4	400,232	25.5	617	0.0
Grade 6	330,021	165,475	50.1	164,546	49.9	228,429	69.2	79,856	24.2	21,736	6.6
Grade 7	324,792	163,144	50.2	161,648	49.8	225,843	69.5	79,413	24.5	19,536	6.0
Grade 8	326,558	163,735	50.1	162,823	49.9	230,354	70.5	78,476	24.0	17,728	5.4
Grade 9	336,913	168,835	50.1	168,078	49.9	240,476	71.4	79,663	23.6	16,774	5.0
Junior Secondary Cycle (Grd 6-9)	1,318,284	661,189	50.2	657,095	49.8	925,102	70.2	317,408	24.1	75,774	5.7
Grade 10	333,939	166,261	49.8	167,678	50.2	241,338	72.3	78,338	23.5	14,263	4.3
Grade 11	320,885	158,769	49.5	162,116	50.5	233,967	72.9	73,549	22.9	13,369	4.2
Grade 11 -2nd Attempt	905	517	57.1	388	42.9	291	32.2	614	67.8	-	-
Senior Secondary O/L Cycle (Grd 10-11)*	655,729	325,547	49.6	330,182	50.4	475,596	72.5	152,501	23.3	27,632	4.2
Grade 12 (A/L 2024)	213,234	92,650	43.4	120,584	56.6	165,321	77.5	43,082	20.2	4,831	2.3
Grade 13 (A/L 2023)	207,343	91,935	44.3	115,408	55.7	162,853	78.5	39,609	19.1	4,881	2.4
Senior Secondary Upper Cycle (A/L/ Grd 12-13)	420,577	184,585	43.9	235,992	56.1	328,174	78.0	82,691	19.7	9,712	2.3
Special Education Unit	7,318	4,538	62.0	2,780	38.0	5,090	69.6	2,228	30.4	-	-
All Students	3,969,597	1,969,836	49.6	1,999,761	50.4	2,900,802	73.1	955,060	24.1	113,735	2.9

* - included repeaters

Source : School Census 2022

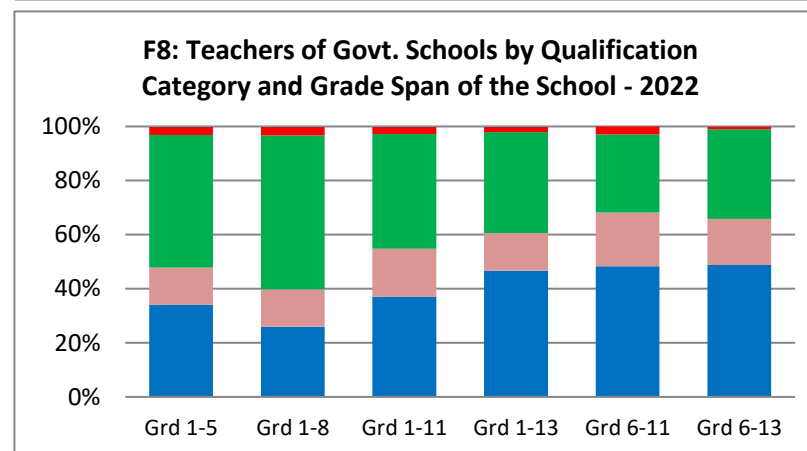
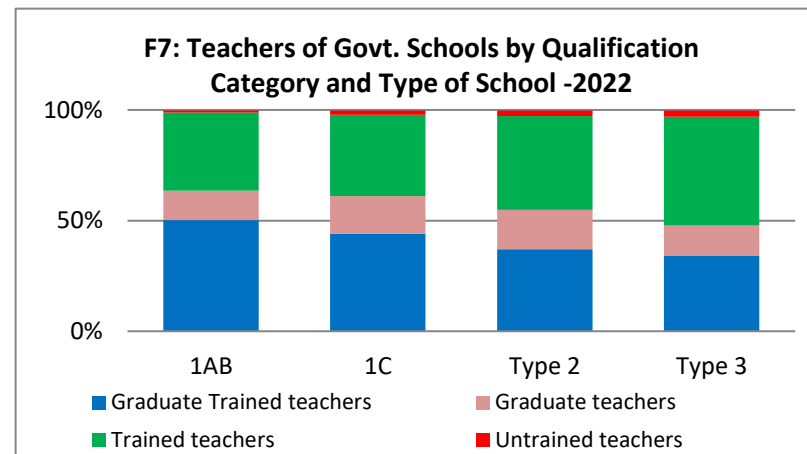


11. Teachers of Govt. Schools by Qualification Classification -2022

Level of School	Graduate Trained teachers	Graduate teachers	Trained teachers	Untrained teachers	Other teachers	Total Teachers
National	19,490	4,188	18,083	386	49	42,196
Provincial	82,113	32,548	75,219	4,345	317	194,542
Total	101,603	36,736	93,302	4,731	366	236,738

Type of School	Graduate Trained teachers	Graduate teachers	Trained teachers	Untrained teachers	Other teachers	Total Teachers
1AB	40,232	10,744	28,240	873	97	80,186
1C	28,122	10,937	23,428	1,346	88	63,921
Type 2	21,305	10,240	24,361	1,501	102	57,509
Type 3	11,944	4,815	17,273	1,011	79	35,122
Total	101,603	36,736	93,302	4,731	366	236,738

Grade Span	Graduate Trained teachers	Graduate teachers	Trained teachers	Untrained teachers	Other teachers	Total Teachers
Grd 1-5	11,795	4,735	16,946	993	78	34,547
Grd 1-8	149	80	327	18	1	575
Grd 1-11	21,188	10,192	24,291	1,494	102	57,267
Grd 1-13	43,009	12,834	34,446	1,748	152	92,189
Grd 6-11	117	48	70	7		242
Grd 6-13	25,345	8,847	17,222	471	33	51,918
Total	101,603	36,736	93,302	4,731	366	236,738



Graduate Trained teachers - Teachers/ Principals who have basic degree or above as highest education qualification and have obtain professional qualifications such as BED or higher degree or NCOE Diploma or Teacher training certificate or diploma or above qualification for appointment/ teaching subject

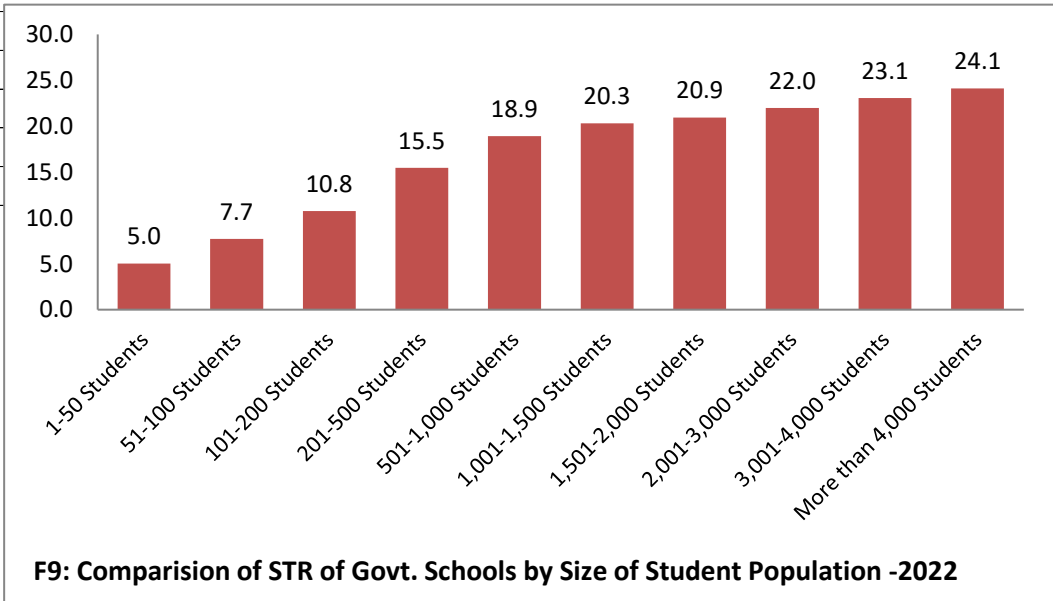
Graduate teachers - Teachers/ Principals who have basic degree or above as highest education qualification but no any professional qualifications as mentioned above
Trained teachers - Teachers/ Principals who do not have basic degree or above as highest education qualification but have obtain above professional qualifications
Untrained teachers - Teachers who do not have either basic degree or above as education qualification or any professional qualifications mentioned above but belongs to SLTS
Other teachers - Teachers who do not have categorized above any category

Source : School Census 2022

1AB - Schools having Science Stream classes in Advanced Level
 1C - Schools having Advanced Level classes Other than Science Stream
 Type 2 - School Having classes only up to Grade 11
 Type 3 - School Having classes up to Grade 5 or Grade 8

12. Student Teacher Ratios (STRs) of Government Schools -2022

Category	No. of Schools	No. of Students	No. of Teachers	STR		Category	No. of Schools	No. of Students	No. of Teachers	STR
All Government Schools	10,126	3,969,597	236,738	16.8		Schools by Student Population				
Level of School						1-50 Students	1,473	43,986	8,753	5.0
National Schools	396	834,586	42,196	19.8		51-100 Students	1,571	116,033	15,023	7.7
Provincial Schools	9,730	3,135,011	194,542	16.1		101-200 Students	2,160	315,016	29,285	10.8
						201-500 Students	2,675	853,716	55,226	15.5
Type of School						501-1,000 Students	1,337	921,706	48,747	18.9
1AB Schools	1,008	1,575,538	80,186	19.6		1,001-1,500 Students	393	473,744	23,346	20.3
1C Schools	1,951	1,043,744	63,921	16.3		1,501-2,000 Students	216	372,829	17,800	20.9
Type 2 Schools	3,221	716,221	57,509	12.5		2,001-3,000 Students	199	480,317	21,863	22.0
Type 3 Schools	3,946	634,094	35,122	18.1		3,001-4,000 Students	68	229,320	9,938	23.1
						More than 4,000 Students	34	162,930	6,757	24.1
Ethnicity of the School										
Sinhala Schools	6,886	2,986,388	171,292	17.4						
Tamil Schools	2,298	554,713	40,711	13.6						
Muslim Schools	942	428,496	24,735	17.3						
Plantation Estate Schools										
Located outside the estate	30	24,447	1,360	18.0						
Located inside the estate	833	181,238	12,281	14.8						



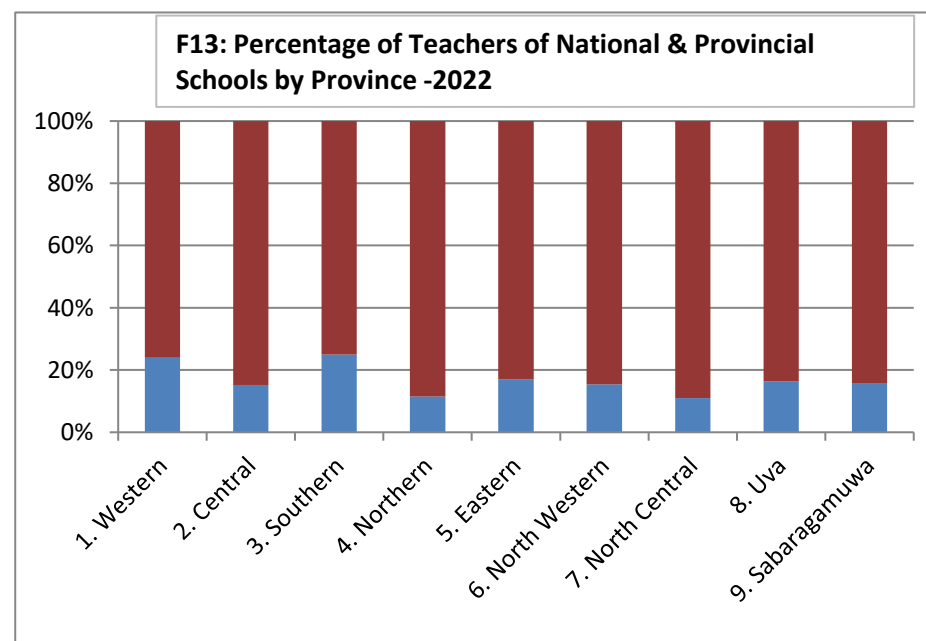
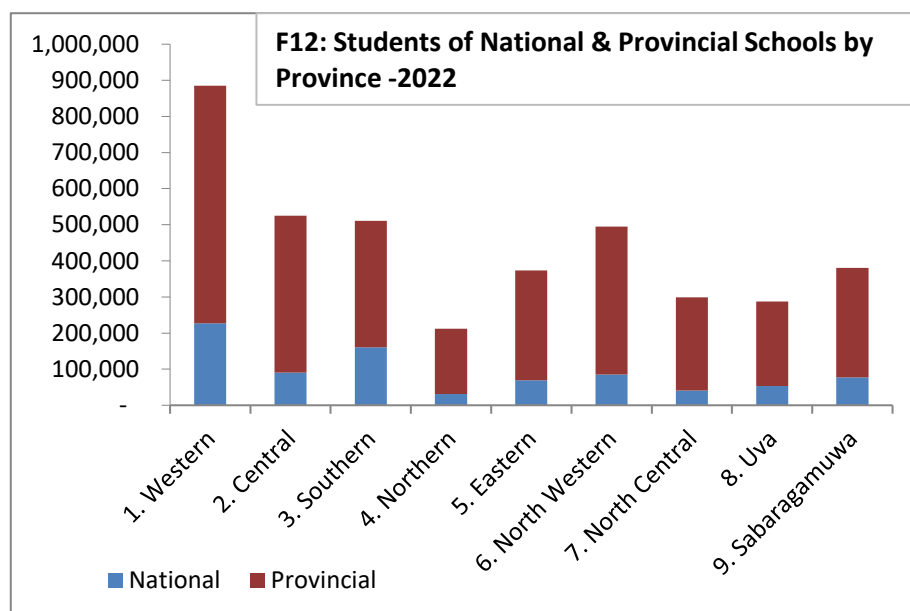
Source : School Census 2022

1AB - Schools having Science Stream classes in Advanced Level
 1C - Schools having Advanced Level classes Other than Science Stream
 Type 2 - School Having classes only up to Grade 11
 Type 3 - School Having classes up to Grade 5 or Grade 8

13. Basic Statistics of National and Provincial Schools by Province - 2022

Province	No. of Schools			No. of Students				No. of Teachers			
	Total	National	Provincial	Total	National	% of Students in National Schools	Provincial	Total	National	% of Teachers in National Schools	Provincial
1. Western	1,348	79	1,269	885,361	226,657	25.6	658,704	44,206	10,585	23.9	33,621
2. Central	1,511	56	1,455	525,441	90,931	17.3	434,510	33,214	5,052	15.2	28,162
3. Southern	1,105	70	1,035	510,743	160,395	31.4	350,348	28,920	7,221	25.0	21,699
4. Northern	980	24	956	212,288	31,149	14.7	181,139	18,142	2,083	11.5	16,059
5. Eastern	1,123	42	1,081	373,043	68,965	18.5	304,078	22,873	3,885	17.0	18,988
6. North Western	1,243	39	1,204	495,030	85,070	17.2	409,960	28,366	4,383	15.5	23,983
7. North Central	811	17	794	299,339	41,008	13.7	258,331	16,222	1,789	11.0	14,433
8. Uva	895	38	857	287,552	53,354	18.6	234,198	19,667	3,214	16.3	16,453
9. Sabaragamuwa	1,110	31	1,079	380,800	77,057	20.2	303,743	25,128	3,984	15.9	21,144
Total	10,126	396	9,730	3,969,597	834,586	21.0	3,135,011	236,738	42,196	17.8	194,542

Source : School Census 2022



14. Basic Statistics of National and Provincial Schools by District - 2022

District	No. of Schools			No. of Students				No. of Teachers			
	Total	National	Provincial	Total	National	% of Students in National Schools	Provincial	Total	National	% of Teachers in National Schools	Provincial
11. Colombo	396	39	357	339,846	123,067	36.2	216,779	16,971	5,653	33.3	11,318
12. Gampaha	535	20	515	329,369	53,783	16.3	275,586	16,164	2,641	16.3	13,523
13. Kalutara	417	20	397	216,146	49,807	23.0	166,339	11,071	2,291	20.7	8,780
21. Kandy	650	36	614	269,613	58,818	21.8	210,795	16,946	3,267	19.3	13,679
22. Matale	312	12	300	101,906	22,870	22.4	79,036	6,356	1,206	19.0	5,150
23. Nuwara Eliya	549	8	541	153,922	9,243	6.0	144,679	9,912	579	5.8	9,333
31. Galle	427	30	397	212,001	75,792	35.8	136,209	11,409	3,319	29.1	8,090
32. Matara	358	23	335	159,505	50,731	31.8	108,774	9,740	2,458	25.2	7,282
33. Hambantota	320	17	303	139,237	33,872	24.3	105,365	7,771	1,444	18.6	6,327
41. Jaffna	447	8	439	97,238	13,663	14.1	83,575	8,970	893	10.0	8,077
42. Mannar	131	5	126	25,844	5,392	20.9	20,452	2,238	392	17.5	1,846
43. Vavuniya	171	5	166	34,934	6,826	19.5	28,108	2,824	437	15.5	2,387
44. Mullaitivu	127	3	124	25,600	2,265	8.8	23,335	2,132	177	8.3	1,955
45. Kilinochchi	104	3	101	28,672	3,003	10.5	25,669	1,978	184	9.3	1,794
51. Batticaloa	365	13	352	119,336	20,671	17.3	98,665	7,111	1,172	16.5	5,939
52. Ampara	443	17	426	158,888	30,110	19.0	128,778	10,249	1,789	17.5	8,460
53. Trincomalee	315	12	303	94,819	18,184	19.2	76,635	5,513	924	16.8	4,589
61. Kurunegala	871	31	840	333,181	66,701	20.0	266,480	19,664	3,479	17.7	16,185
62. Puttalam	372	8	364	161,849	18,369	11.3	143,480	8,702	904	10.4	7,798
71. Anuradhapura	559	8	551	207,255	21,624	10.4	185,631	11,569	949	8.2	10,620
72. Polonnaruwa	252	9	243	92,084	19,384	21.1	72,700	4,653	840	18.1	3,813
81. Badulla	604	27	577	176,219	33,034	18.7	143,185	13,267	2,218	16.7	11,049
82. Moneragala	291	11	280	111,333	20,320	18.3	91,013	6,400	996	15.6	5,404
91. Ratnapura	594	16	578	221,028	38,408	17.4	182,620	13,299	1,868	14.0	11,431
92. Kegalle	516	15	501	159,772	38,649	24.2	121,123	11,829	2,116	17.9	9,713
Total	10,126	396	9,730	3,969,597	834,586	21.0	3,135,011	236,738	42,196	17.8	194,542

Source : School Census 2022

Prepared by Statistics Branch of MOE

15. Basic Statistics of Government Schools by Zones -2022

District	Education Zone	All	Schools by Level		Schools by Type				Student Population (Size)					
			National	Provincial	1AB	1C	Type 2	Type 3	1--50	51-100	101-200	201- 500	501-1,000	Above 1,000
11. Colombo	Colombo	123	21	102	32	38	40	13		15	12	29	28	39
	Homagama	99	4	95	8	14	35	42	9	10	15	27	20	18
	Piliyandala	86	5	81	16	16	25	29	8	9	13	27	8	21
	Sri Jayawardanapura	88	9	79	21	15	25	27	4	5	10	26	18	25
12. Gampaha	Gampaha	145	7	138	19	27	49	50	8	9	31	41	29	27
	Kelaniya	115	6	109	18	29	32	36		7	14	31	34	29
	Minuwangoda	158	3	155	9	25	55	69	7	21	44	42	26	18
	Negombo	117	4	113	19	28	39	31		9	26	33	27	22
13. Kalutara	Horana	137	5	132	13	30	37	57	15	23	20	39	21	19
	Kalutara	150	12	138	29	27	61	33	7	11	29	35	30	38
	Matugama	130	3	127	8	19	47	56	20	24	39	25	14	8
21. Kandy	Denuwara	87	4	83	8	22	30	27	7	16	21	22	16	5
	Gampola	142	6	136	9	30	50	53	19	21	40	32	14	16
	Kandy	116	9	107	22	29	40	25	12	18	22	24	17	23
	Katugastota	121	10	111	8	36	32	45	16	17	27	34	19	8
	Teldeniya	97	3	94	3	19	28	47	26	14	16	24	13	4
	Wathagama	87	4	83	9	27	31	20	6	11	19	29	13	9
22. Matale	Galewela	107	2	105	5	23	30	49	14	19	19	37	13	5
	Matale	119	9	110	13	24	49	33	16	12	37	27	15	12
	Naula	39	1	38	1	9	16	13	6	12	10	8	2	1
	Wilgamuwa	47		47	1	7	8	31	15	11	3	13	4	1
23. Nuwara Eliya	Hanguranketha	68	2	66	6	9	25	28	14	9	13	21	6	5
	Hatton	150	1	149	10	29	43	68	13	36	28	46	20	7
	Kotmale	86	3	83	8	17	15	46	11	21	18	26	8	2
	Nuwara Eliya	156	1	155	8	22	49	77	17	45	33	36	20	5
	Walapane	89	1	88	4	16	13	56	22	18	17	19	11	2

District	Education Zone	All	Schools by Level		Schools by Type				Student Population (Size)					
			National	Provincial	1AB	1C	Type 2	Type 3	1--50	51-100	101-200	201- 500	501-1,000	Above 1,000
31. Galle	Ambalangoda	82	5	77	12	14	19	37	7	8	23	22	13	9
	Elpitiya	123	3	120	11	20	33	59	14	20	33	29	19	8
	Galle	144	19	125	33	35	24	52	17	20	22	34	17	34
	Udugama	78	3	75	6	16	18	38	8	18	16	20	10	6
32. Matara	Akuressa	78	2	76	6	21	25	26	16	8	16	23	9	6
	Deniyaya (Morawaka)	78	4	74	4	19	24	31	10	10	19	18	14	7
	Matara	111	13	98	24	26	26	35	4	14	26	30	20	17
	Mulatiyana (Hakmana)	91	4	87	9	16	30	36	10	20	19	23	11	8
33. Hambantota	Hambantota	122	7	115	14	29	47	32	4	12	27	45	16	18
	Tangalle	107	6	101	12	22	40	33	14	15	36	20	11	11
	Walasmulla	91	4	87	11	22	27	31	6	12	22	31	12	8
41. Jaffna	Islands	64		64	5	7	20	32	19	22	16	6	1	
	Jaffna	99	4	95	14	13	39	33	16	25	21	23	5	9
	Thenmarachchi	58	1	57	6	6	19	27	16	17	13	7	4	1
	Vadamarachchi	81	2	79	11	10	29	31	12	15	24	22	5	3
	Valikamam	145	1	144	15	13	36	81	38	43	26	24	11	3
42. Mannar	Madhu	49		49	4	8	11	26	16	12	12	9		
	Mannar	82	5	77	11	16	23	32	21	13	13	24	8	3
43. Vavuniya	Vavuniya North	74		74	4	8	17	45	40	12	10	9	3	
	Vavuniya South	97	5	92	10	17	23	47	26	17	16	21	13	4
44. Mullaitivu	Mullaitivu	66	2	64	7	12	23	24	11	13	11	19	11	1
	Thunukkai	61	1	60	7	4	13	37	27	7	15	10	2	
45. Kilinochchi	Kilinochchi North	38	1	37	3	5	12	18	12	7	8	9	2	
	Kilinochchi South	66	2	64	10	11	23	22	8	11	7	27	11	2
51. Batticaloa	Batticaloa	65	4	61	10	12	23	20	9	9	16	17	6	8
	Batticaloa Central	77	6	71	11	13	15	38	8	7	13	17	24	8
	Batticaloa West	68		68	5	10	19	34	18	10	19	15	6	
	Kalkudah	84	1	83	9	8	28	39	19	12	17	23	9	4

District	Education Zone	All	Schools by Level		Schools by Type				Student Population (Size)					
			National	Provincial	1AB	1C	Type 2	Type 3	1--50	51-100	101-200	201- 500	501-1,000	Above 1,000
51. Batticaloa	Paddrippu	70	2	68	8	17	15	30	15	5	13	25	10	2
52. Ampara	Akkaraipattu	72	3	69	9	5	21	37	8	12	10	21	14	7
	Ampara	103	3	100	5	21	45	32	10	15	34	29	7	8
	Dehiattakandiya	47	1	46	2	6	18	21	4	6	16	17	2	2
	Kalmunai	65	4	61	9	13	21	22	3	6	16	15	16	9
	Mahaoya	40	1	39	2	5	15	18	11	3	10	10	4	2
	Sammanthurai	71	3	68	7	13	22	29	7	11	17	23	8	5
	Thirukkivil	46	2	44	5	7	10	24	8	9	9	13	5	2
53. Trincomalee	Kantale	44	1	43	5	10	14	15	4	5	7	21	5	2
	Kinniya	67	3	64	4	18	17	28	8	10	14	22	9	4
	Muttur	88	1	87	6	15	25	42	14	21	16	29	6	2
	Trincomalee	82	6	76	11	23	22	26	11	12	13	31	8	7
	Trincomalee North	34	1	33	2	3	17	12	4	13	7	8	2	
61. Kurunegala	Giriulla	137	8	129	13	28	38	58	19	25	35	26	18	14
	Ibbagamuwa	109	2	107	10	21	28	50	11	15	28	31	14	10
	Kuliyapitiya	165	5	160	10	44	50	61	17	25	49	44	19	11
	Kurunegala	118	8	110	26	23	38	31	11	15	23	27	18	24
	Maho	188	5	183	9	38	64	77	29	30	40	56	24	9
	Nikaweratiya	154	3	151	9	30	56	59	32	29	36	38	12	7
62. Puttalam	Chilaw	159	5	154	17	31	69	42	10	20	32	53	24	20
	Puttalam	213	3	210	12	59	77	65	12	20	44	80	36	21
71. Anuradhapura	Anuradhapura	136	3	133	12	30	44	50	19	17	23	40	25	12
	Galenbindunuwewa	95		95	4	19	24	48	27	12	14	24	15	3
	Kebithigollewa	126	1	125	6	12	43	65	30	24	22	34	12	4
	Kekirawa	130	2	128	8	29	28	65	23	22	24	34	22	5
	Thambuttegama	72	2	70	7	12	26	27	3	4	18	23	14	10
72. Polonnaruwa	Dimbulagala	103	1	102	6	18	15	64	17	29	22	21	11	3
	Hingurakgoda	96	5	91	9	9	26	52	5	20	18	31	14	8

District	Education Zone	All	Schools by Level		Schools by Type				Student Population (Size)					
			National	Provincial	1AB	1C	Type 2	Type 3	1--50	51-100	101-200	201- 500	501-1,000	Above 1,000
72. Polonnaruwa	Polonnaruwa	53	3	50	9	12	11	21	4	4	10	17	12	6
81. Badulla	Badulla	112	6	106	15	27	32	38	22	22	23	26	12	7
	Bandarawela	142	10	132	13	27	40	62	30	28	32	28	14	10
	Mahiyanganaya	81	2	79	4	23	25	29	9	9	17	27	13	6
	Passara	88	2	86	3	15	25	45	25	15	24	15	7	2
	Viyaluwa	70	3	67	3	15	24	28	18	10	17	20	4	1
	Welimada	111	4	107	7	30	39	35	16	17	25	32	16	5
82. Moneragala	Bibile	82	3	79	10	15	30	27	10	11	18	26	12	5
	Moneragala	109	4	105	11	20	42	36	19	15	21	34	14	6
	Thanamalwila	43	2	41	8	8	14	13	1	2	6	17	14	3
	Wellawaya	57	2	55	7	7	26	17	4	5	14	12	14	8
91. Ratnapura	Balangoda	133	2	131	10	19	67	37	25	24	33	27	14	10
	Embilipitiya	127	4	123	15	17	54	41	24	8	22	32	22	19
	Nivitigala	146	2	144	7	21	59	59	28	27	40	32	13	6
	Ratnapura	188	8	180	19	39	74	56	36	21	34	52	21	24
92. Kegalle	Dehiowita	221	4	217	15	34	83	89	56	27	65	51	12	10
	Kegalle	160	7	153	15	33	48	64	33	36	35	31	13	12
	Mawanella	135	4	131	13	30	50	42	23	23	22	40	17	10

16. Comparison of Basic Statistics of National and Provincial Schools by Zones - 2022

District	Education Zone	No. of Schools			No. of Students				No. of Teachers			
		Total	National	Provincial	Total	National	% of Students in National Schools	Provincial	Total	National	% of Teachers in National Schools	Provincial
11. Colombo	Colombo	123	21	102	135,926	74,892	55.1	61,034	6,689	3,298	49.3	3,391
	Homagama	99	4	95	63,768	10,770	16.9	52,998	3,003	555	18.5	2,448
	Piliyandala	86	5	81	56,141	13,049	23.2	43,092	3,016	629	20.9	2,387
	Sri Jayawardanapura	88	9	79	84,011	24,356	29.0	59,655	4,263	1,171	27.5	3,092
12. Gampaha	Gampaha	145	7	138	98,011	19,238	19.6	78,773	4,884	909	18.6	3,975
	Kelaniya	115	6	109	87,918	17,492	19.9	70,426	4,099	832	20.3	3,267
	Minuwangoda	158	3	155	70,789	6,304	8.9	64,485	3,524	377	10.7	3,147
	Negombo	117	4	113	72,651	10,749	14.8	61,902	3,657	523	14.3	3,134
13. Kalutara	Horana	137	5	132	67,738	14,939	22.1	52,799	3,679	725	19.7	2,954
	Kalutara	150	12	138	103,912	25,733	24.8	78,179	4,736	1,165	24.6	3,571
	Matugama	130	3	127	44,496	9,135	20.5	35,361	2,656	401	15.1	2,255
21. Kandy	Denuwara	87	4	83	29,917	4,012	13.4	25,905	2,134	298	14.0	1,836
	Gampola	142	6	136	51,839	9,504	18.3	42,335	3,098	557	18.0	2,541
	Kandy	116	9	107	81,044	23,815	29.4	57,229	5,013	1,255	25.0	3,758
	Katugastota	121	10	111	42,862	13,049	30.4	29,813	2,763	697	25.2	2,066
	Teldeniya	97	3	94	26,888	4,086	15.2	22,802	1,569	217	13.8	1,352
	Wathagama	87	4	83	37,063	4,352	11.7	32,711	2,369	243	10.3	2,126
22. Matale	Galewela	107	2	105	35,411	3,626	10.2	31,785	1,976	206	10.4	1,770
	Matale	119	9	110	48,930	17,503	35.8	31,427	3,108	916	29.5	2,192
	Naula	39	1	38	8,007	1,741	21.7	6,266	677	84	12.4	593
	Wilgamuwa	47		47	9,558		-	9,558	595		-	595
23. Nuwara Eliya	Hanguranketha	68	2	66	21,767	3,338	15.3	18,429	1,496	192	12.8	1,304
	Hatton	150	1	149	46,860	1,373	2.9	45,487	2,994	82	2.7	2,912
	Kotmale	86	3	83	21,342	2,163	10.1	19,179	1,435	169	11.8	1,266
	Nuwara Eliya	156	1	155	42,676	805	1.9	41,871	2,680	61	2.3	2,619
	Walapane	89	1	88	21,277	1,564	7.4	19,713	1,307	75	5.7	1,232

District	Education Zone	No. of Schools			No. of Students				No. of Teachers			
		Total	National	Provincial	Total	National	% of Students in National Schools	Provincial	Total	National	% of Teachers in National Schools	Provincial
31. Galle	Ambalangoda	82	5	77	43,793	13,588	31.0	30,205	2,224	600	27.0	1,624
	Elpitiya	123	3	120	43,337	8,402	19.4	34,935	2,458	312	12.7	2,146
	Galle	144	19	125	99,282	49,097	49.5	50,185	5,138	2,183	42.5	2,955
	Udugama	78	3	75	25,589	4,705	18.4	20,884	1,589	224	14.1	1,365
32. Matara	Akuressa	78	2	76	29,127	3,773	13.0	25,354	1,766	192	10.9	1,574
	Deniyaya (Morawaka)	78	4	74	32,239	8,738	27.1	23,501	1,918	394	20.5	1,524
	Matara	111	13	98	67,481	31,633	46.9	35,848	3,981	1,497	37.6	2,484
	Mulatiyana (Hakmana)	91	4	87	30,658	6,587	21.5	24,071	2,075	375	18.1	1,700
33. Hambantota	Hambantota	122	7	115	63,515	14,882	23.4	48,633	3,046	580	19.0	2,466
	Tangalle	107	6	101	36,924	8,117	22.0	28,807	2,487	454	18.3	2,033
	Walasmulla	91	4	87	38,798	10,873	28.0	27,925	2,238	410	18.3	1,828
41. Jaffna	Islands	64		64	6,770		-	6,770	828		-	828
	Jaffna	99	4	95	32,591	8,583	26.3	24,008	2,655	507	19.1	2,148
	Thenmarachchi	58	1	57	10,440	1,776	17.0	8,664	1,119	116	10.4	1,003
	Vadamarachchi	81	2	79	18,613	2,380	12.8	16,233	1,750	180	10.3	1,570
	Valikamam	145	1	144	28,824	924	3.2	27,900	2,618	90	3.4	2,528
42. Mannar	Madhu	49		49	5,667		-	5,667	633		-	633
	Mannar	82	5	77	20,177	5,392	26.7	14,785	1,605	392	24.4	1,213
43. Vavuniya	Vavuniya North	74		74	7,334		-	7,334	797		-	797
	Vavuniya South	97	5	92	27,600	6,826	24.7	20,774	2,027	437	21.6	1,590
44. Mullaitivu	Mullaitivu	66	2	64	18,227	1,621	8.9	16,606	1,393	120	8.6	1,273
	Thunukkai	61	1	60	7,373	644	8.7	6,729	739	57	7.7	682
45. Kilinochchi	Kilinochchi North	38	1	37	6,623	668	10.1	5,955	613	60	9.8	553
	Kilinochchi South	66	2	64	22,049	2,335	10.6	19,714	1,365	124	9.1	1,241
51. Batticaloa	Batticaloa	65	4	61	25,405	7,846	30.9	17,559	1,763	433	24.6	1,330
	Batticaloa Central	77	6	71	36,476	8,166	22.4	28,310	1,800	462	25.7	1,338
	Batticaloa West	68		68	12,712		-	12,712	840		-	840
	Kalkudah	84	1	83	23,807	1,087	4.6	22,720	1,294	58	4.5	1,236
	Paddrippu	70	2	68	20,422	3,572	17.5	16,850	1,414	219	15.5	1,195

District	Education Zone	No. of Schools			No. of Students				No. of Teachers			
		Total	National	Provincial	Total	National	% of Students in National Schools	Provincial	Total	National	% of Teachers in National Schools	Provincial
52. Ampara	Akkaraipattu	72	3	69	28,645	4,318	15.1	24,327	1,663	314	18.9	1,349
	Ampara	103	3	100	34,338	5,619	16.4	28,719	2,117	273	12.9	1,844
	Dehiattakandiya	47	1	46	13,637	2,559	18.8	11,078	799	119	14.9	680
	Kalmunai	65	4	61	37,503	9,965	26.6	27,538	2,526	577	22.8	1,949
	Mahaoya	40	1	39	9,269	1,009	10.9	8,260	595	49	8.2	546
	Sammanthurai	71	3	68	23,933	4,444	18.6	19,489	1,628	296	18.2	1,332
	Thirukkovil	46	2	44	12,077	2,196	18.2	9,881	921	161	17.5	760
53. Trincomalee	Kantale	44	1	43	15,492	2,672	17.2	12,820	780	86	11.0	694
	Kinniya	67	3	64	25,042	5,713	22.8	19,329	1,403	281	20.0	1,122
	Muttur	88	1	87	19,699	1,171	5.9	18,528	1,214	77	6.3	1,137
	Trincomalee	82	6	76	28,931	8,154	28.2	20,777	1,683	458	27.2	1,225
	Trincomalee North	34	1	33	5,655	474	8.4	5,181	433	22	5.1	411
61. Kurunegala	Giriulla	137	8	129	53,801	17,211	32.0	36,590	3,304	969	29.3	2,335
	Ibbagamuwa	109	2	107	41,852	4,379	10.5	37,473	2,298	230	10.0	2,068
	Kuliyapitiya	165	5	160	57,195	10,775	18.8	46,420	3,401	534	15.7	2,867
	Kurunegala	118	8	110	80,389	18,729	23.3	61,660	4,355	915	21.0	3,440
	Maho	188	5	183	57,056	8,625	15.1	48,431	3,429	471	13.7	2,958
	Nikaweratiya	154	3	151	42,888	6,982	16.3	35,906	2,877	360	12.5	2,517
62. Puttalam	Chilaw	159	5	154	74,937	13,935	18.6	61,002	3,874	640	16.5	3,234
	Puttalam	213	3	210	86,912	4,434	5.1	82,478	4,828	264	5.5	4,564
71. Anuradhapura	Anuradhapura	136	3	133	67,488	9,227	13.7	58,261	3,757	430	11.4	3,327
	Galenbindunuwewa	95		95	26,888		-	26,888	1,636		-	1,636
	Kebithigollewa	126	1	125	31,511	1,831	5.8	29,680	1,825	103	5.6	1,722
	Kekirawa	130	2	128	42,538	4,916	11.6	37,622	2,413	169	7.0	2,244
	Thambuttegama	72	2	70	38,830	5,650	14.6	33,180	1,938	247	12.7	1,691
72. Polonnaruwa	Dimbulagala	103	1	102	25,011	1,796	7.2	23,215	1,343	70	5.2	1,273
	Hingurakgoda	96	5	91	37,994	8,486	22.3	29,508	1,869	403	21.6	1,466
	Polonnaruwa	53	3	50	29,079	9,102	31.3	19,977	1,441	367	25.5	1,074
81. Badulla	Badulla	112	6	106	37,241	10,649	28.6	26,592	3,194	662	20.7	2,532

District	Education Zone	No. of Schools			No. of Students				No. of Teachers			
		Total	National	Provincial	Total	National	% of Students in National Schools	Provincial	Total	National	% of Teachers in National Schools	Provincial
81. Badulla	Bandarawela	142	10	132	44,006	12,251	27.8	31,755	3,452	846	24.5	2,606
	Mahiyanganaya	81	2	79	30,066	3,074	10.2	26,992	1,637	171	10.4	1,466
	Passara	88	2	86	16,868	1,921	11.4	14,947	1,367	136	9.9	1,231
	Viyaluwa	70	3	67	13,476	1,901	14.1	11,575	1,089	139	12.8	950
	Welimada	111	4	107	34,562	3,238	9.4	31,324	2,528	264	10.4	2,264
82. Moneragala	Bibile	82	3	79	27,515	4,533	16.5	22,982	1,655	218	13.2	1,437
	Moneragala	109	4	105	35,525	7,792	21.9	27,733	2,331	405	17.4	1,926
	Thanamalwila	43	2	41	20,824	3,047	14.6	17,777	970	144	14.8	826
	Wellawaya	57	2	55	27,469	4,948	18.0	22,521	1,444	229	15.9	1,215
91. Ratnapura	Balangoda	133	2	131	40,248	3,554	8.8	36,694	2,789	196	7.0	2,593
	Embilipitiya	127	4	123	58,761	9,312	15.8	49,449	3,255	442	13.6	2,813
	Nivitigala	146	2	144	35,871	3,233	9.0	32,638	2,344	200	8.5	2,144
	Ratnapura	188	8	180	86,148	22,309	25.9	63,839	4,911	1,030	21.0	3,881
92. Kegalle	Dehiowita	221	4	217	51,666	7,041	13.6	44,625	3,964	420	10.6	3,544
	Kegalle	160	7	153	57,916	20,993	36.2	36,923	4,169	1,069	25.6	3,100
	Mawanella	135	4	131	50,190	10,615	21.1	39,575	3,696	627	17.0	3,069



School Census - 2022

Summary Statistics of Other Schools (Private Schools, Special Schools and Pirivena)



17. Basic Statistics of Private Schools by Province and District -2022

Province/ District	Type of School			Total Schools	Students						Teachers		
	1AB	1C	Type 2		Male	Female	Total	Sinhala Medium	Tamil Medium	English Medium	Male	Female	Total
1. Western	40	13	6	59	53,227	48,969	102,196	63,450	6,534	32,212	1,111	4,464	5,575
11. Colombo	20	6	4	30	30,085	28,148	58,233	31,252	6,534	20,447	595	2,818	3,413
12. Gampaha	16	3	2	21	19,654	15,293	34,947	26,087	-	8,860	380	1,324	1,704
13. Kalutara	4	4		8	3,488	5,528	9,016	6,111	-	2,905	136	322	458
2. Central	6	6	3	15	8,890	8,045	16,935	10,647	2,621	3,667	160	777	937
21. Kandy	6	2	3	11	6,777	5,407	12,184	7,889	907	3,388	119	582	701
22. Matale		2		2	650	1,499	2,149	1,683	303	163	17	108	125
23. Nuwara Eliya		2		2	1,463	1,139	2,602	1,075	1,411	116	24	87	111
3. Southern	2	6	1	9	1,750	4,808	6,558	5,808	-	750	45	256	301
31. Galle		2		2	185	326	511	364	-	147	7	32	39
32. Matara	2	3	1	6	1,440	4,332	5,772	5,169	-	603	33	194	227
33. Hambantota		1		1	125	150	275	275	-	-	5	30	35
4. Northern	5			5	4,291	3,429	7,720	-	6,439	1,281	141	214	355
41. Jaffna	5			5	4,291	3,429	7,720	-	6,439	1,281	141	214	355
6. North Western	1		1	2	435	721	1,156	518	-	638	2	64	66
61. Kurunegala	1		1	2	435	721	1,156	518	-	638	2	64	66
7. North Central	1			1	593	564	1,157	651	-	506	11	79	90
71. Anuradhapura	1			1	593	564	1,157	651	-	506	11	79	90
8. Uva	1		2	3	2,174	52	2,226	1,382	305	539	66	106	172
81. Badulla	1		2	3	2,174	52	2,226	1,382	305	539	66	106	172
9. Sabaragamuwa	1			1	730	734	1,464	904	-	560	9	46	55
91. Ratnapura	1			1	730	734	1,464	904	-	560	9	46	55
Total	57	25	13	95	72,090	67,322	139,412	83,360	15,899	40,153	1,545	6,006	7,551

Source : School Census 2022

18. Basic Statistics of Special Schools by Province and District -2022

Province/District	Schools	Students			Teachers		
		Male	Female	Total	Male	Female	Total
1.Western	13	580	348	928	17	192	209
11.Colombo	5	232	130	362	11	79	90
12.Gampaha	5	243	144	387	6	82	88
13.Kalutara	3	105	74	179	-	31	31
2.Central	4	109	77	186	6	35	41
21.Kandy	2	81	54	135	4	25	29
22.Matale	2	28	23	51	2	10	12
3.Southern	4	219	166	385	21	51	72
31.Galle	2	64	44	108	5	14	19
32.Matara	1	66	53	119	1	19	20
33.Hambantota	1	89	69	158	15	18	33
4.Northern	1	69	64	133	9	19	28
41.Jaffna	1	69	64	133	9	19	28
5.Eastern	1	29	10	39	1	8	9
51.Batticaloa	1	29	10	39	1	8	9
6.North Western	2	118	105	223	4	35	39
61.Kurunegala	1	69	77	146	3	20	23
62.Puttalam	1	49	28	77	1	15	16
7.North Central	1	44	33	77	8	10	18
71.Anuradhapura	1	44	33	77	8	10	18
8.Uva	2	84	72	156	14	25	39
81.Badulla	1	54	55	109	8	17	25
82.Monaragala	1	30	17	47	6	8	14
9.Sabaragamuwa	3	91	89	180	9	25	34
91.Ratnapura	1	34	25	59	4	7	11
92.Kegalle	2	57	64	121	5	18	23
Total	31	1,343	964	2,307	89	400	489

Note:

There are 31 Special Schools purview under the Ministry of Education and those Special Schools are functioned as schools dedicated only for students with special needs. Out of these 31 schools 27 are governend by board of management of those schools and assisted by MOE other 4 schools are administrated by Provincial councils

Source : School Census 2022

Prepared by Statistics Branch of MOE

19. Basic Statistics of Piriven (Temple Schools) by District -2022

DISTRICT	No. of Pirivena					No. of Students			Approved Teachers			Unapproved Teachers			All Teachers
	Mulika	Maha	Vidya-yathana	Seela-matha	Total	Clergy	Laity	Total	Clergy	Laity	Total	Clergy	Laity	Total	
11. Colombo	34	12	3	2	51	2,545	1,040	3,585	263	146	409	4	1	5	414
12. Gampaha	36	25	4	3	68	3,008	2,973	5,981	329	295	624	3	2	5	629
13. Kalutara	31	10	8	2	51	2,278	3,482	5,760	223	267	490	8	7	15	505
21. Kandy	46	26	8	2	82	4,636	3,428	8,064	392	353	745	8	2	10	755
22. Matale	10	12	1		23	1,222	862	2,084	110	78	188		1	1	189
23. Nuwara Eliya	6	4	1		11	733	362	1,095	53	50	103		1	1	104
31. Galle	49	20	4	1	74	2,822	2,216	5,038	271	275	546	6	5	11	557
32. Matara	48	13	7		68	2,674	2,298	4,972	226	356	582	2	3	5	587
33. Hambantota	28	10	1		39	1,345	913	2,258	121	174	295	3	3	6	301
43. Vavuniya	1		1		2	78	675	753	7	28	35	1	2	3	38
44. Mullaitivu	1				1	22	14	36	1	4	5	1		1	6
51. Batticaloa	1				1	35	11	46	2	3	5				5
52. Ampara	16	5			21	843	326	1,169	65	73	138	1	3	4	142
53. Trincomalee	3	3	1		8	269	465	734	29	43	72		1	1	73
61. Kurunegala	40	38	6	1	85	3,783	4,183	7,966	355	428	783	4	6	10	793
62. Puttalam	6	8			14	651	387	1,038	51	47	98	1	2	3	101
71. Anuradhapura	26	16	3	1	45	2,047	1,792	3,839	187	193	380	3	1	4	384
72. Polonnaruwa	8	7			15	874	541	1,415	56	65	121		1	1	122
81. Badulla	27	11	3	1	42	1,575	1,120	2,695	163	185	348	3		3	351
82. Moneragala	20	5	2		27	906	895	1,801	83	153	236	1	1	2	238
91. Ratnapura	38	8	5		51	1,891	2,547	4,438	176	224	400	8	6	14	414
92. Kegalle	17	19	7		43	2,337	2,030	4,367	187	226	413	2	5	7	420
Total	492	252	65	13	822	36,574	32,560	69,134	3,350	3,666	7,016	59	53	112	7,128

Source : School Census 2022

Remark - 3 Special Pirivena (401903 - Vidyodaya Maha Pirivena , 402902 - Vidyalankara Maha Pirivena , 407901 - Sri Gnanananda Pirivena) included under Maha Piriven this table

Prepared by Statistics Branch of MOE

Source: School Census 2022

Reference Date: 2023 March 01st

Prepared by Statistics Branch of MOE

For More Details

Head of the Statistics Branch

Tel: 011-2785566, 011-2787316, 011-2187430

Email: statbmoe2022@gmail.com / statbmoe3@gmail.com