



PRODUCT SELECTION GUIDE



Aged Brick - Ebony



AGED BRICK

Aged Brick is a profile that is a mixture of smooth to rough textures with tumbled edges and slight variations in length.

Stone Specifications:

Length: 7-5/8"

Height: 2-1/4" approx.

Thickness: 1" approx.

*Square footage is based on an installation with 3/8" grout lines.



OLD CHICAGO



ASHEN



OXFORD



EBONY



CORAL



GRANITE RIDGE



WINTERTON



BROWNSTONE



BISQUE



CHISELED LIMESTONE

With a rough, hand-hewn appearance, Chiseled Limestone ranges in shape from nearly square to narrow and rectangular. All edges of this profile are shaped to 90-degrees to accommodate either a mortared or dry-stacked installation.

Stone Specifications:

Length: 4" to 15-1/2"

Height: 1-1/2" to 6" approx.

Thickness: 1" to 2" approx.

*Square footage is based on an installation with 1/2" grout lines.



Chiseled Limestone - Sahara



BISQUE



CONIFER



SAHARA



SANDSTONE



DRIFTWOOD



DURANGO BROWN



ALABASTER



ALPINE



CHARCOAL



GRANITE RIDGE



CONTEMPORARY BRICK

Contemporary Brick is a profile comprised of smooth to light texture bricks with crisp 90-degree edges.

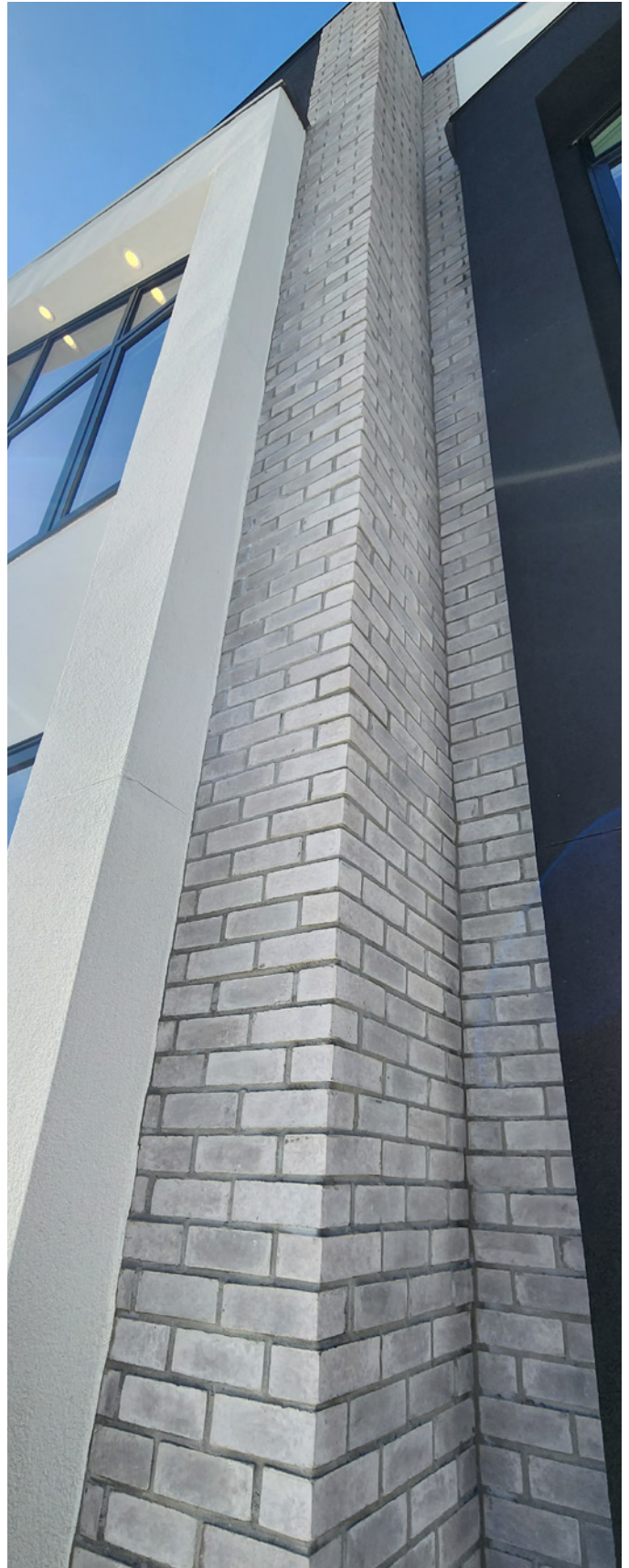
Stone Specifications:

Length: 7-5/8"

Height: 2-1/2" approx.

Thickness: 1" approx.

*Square footage is based on an installation with 3/8" grout lines.



EBONY



ASHEN



BROWNSTONE



CORAL



BISQUE

Contemporary Brick - Bisque



Country Cliffstone - Granite Ridge

COUNTRY CLIFFSTONE

Country Cliffstone displays a pleasant variety of textural details, varying from an occasional rugged sawtooth texture to a nearly smooth finish. Stones are perfectly sized to accomplish a unique and impressive installation quickly.

Stone Specifications:

Length: 4" to 21"

Height: 1-1/2" to 6" approx.

Thickness: 1" to 2" approx.

*Square footage is based on a tight-fitted installation.



GRANITE RIDGE



BISQUE



BOW VALLEY



DRIFTWOOD



ALPINE



MONTANA SLATE



DURANGO BROWN



RUNDLE



ALABASTER



FIELDSTONE

Comprised of random angles and naturally irregular shapes, coupled with a rugged surface texture, our Fieldstone is sure to add warmth and character to your next project.

Stone Specifications:

Length: 5" to 15"

Height: 1" to 15" approx.

Thickness: 1" to 2" approx.

*Square footage is based on an installation with 1/2" grout lines.



DRIFTWOOD



BITTERROOT



DURANGO BROWN



GRANITE RIDGE



ALPINE



ASPEN



GLACIER STONE

With more texture than standard river rock, these stones were molded after actual glacial deposits here in the Northwest. Glacier Stone creates beautiful shadows when installed, due to the natural variations in thickness, shape, and texture.

Stone Specifications:

Length: 4" to 18"

Height: 4" to 18" approx.

Thickness: 1" to 2-1/2" approx.

*Square footage is based on an installation with 1/2" grout lines.



ASPEN



BITTERROOT



NORTHWEST BLEND



MOUNTAIN LEDGE

This profile displays an impressive “in and out” installation, which will give beautiful depth to your project. It is created with mostly square-edged stones with varying textures from nearly smooth to very aggressive. A panelized stone similar to our Northern Ledge stone, Mountain Ledge installs very quickly, and shows a slightly larger average stone size which works well on all types of projects.

Stone Specifications:

Length: 8", 12" & 20"

Height: 5" approx.

Thickness: 3/4" to 1-7/8" approx.

*Square footage is based on a tight-fitted installation.



DURANGO BROWN



GRANITE RIDGE



DRIFTWOOD



BOW VALLEY



MONTANA SLATE



COAL RIVER



ROCKY MOUNTAIN



RUNDLE



ALPINE



CHARCOAL



Mountain Ledge - Durango Brown



Northern Ledgestone - Alpine

NORTHERN LEDGESTONE

This pattern was designed to create an installer-friendly stone which does not require grout joints. Comprised of 4" tall panels in varying lengths, this pattern mimics the appearance of an intricate dry-stacked installation. Perfect for commercial or residential applications, this profile helps less experienced installers achieve a beautiful end result.

Stone Specifications:

Length: 8", 12" & 18" approx.

Height: 4"

Thickness: 3/4" to 1-1/2" approx.

*Square footage is based on a tight-fitted installation.



MONTANA SLATE



COAL RIVER



RUNDLE



DRIFTWOOD



BONNER COUNTY



HIGH COUNTRY



GRANITE RIDGE



BOW VALLEY



DURANGO BROWN



ALBERTA BLEND



HARVEST BLEND



ALPINE



BISQUE



CHARCOAL



ROCKY MOUNTAIN



RUSTIC LEDGESTONE

With a distinctive, irregular appearance, our Rustic Ledgestone is sure to complement any home or business. A favorite in the region, this profile is representative of the ledgestone commonly found among the mountain ridges of the Selkirk range.

Stone Specifications:

Length: 5" to 18"

Height: 3/4" to 6" approx.

Thickness: 1" to 2" approx.

*Square footage is based on an installation with 1/2" grout lines.



GRANITE RIDGE



BITTERROOT



CHARCOAL



ALPINE



DURANGO BROWN



MONTANA SLATE



HARVEST BLEND



COAL RIVER



DRIFTWOOD



BONNER COUNTY



SHADOW LEDGESTONE

Our most rugged ledgestone, Shadow Ledgestone creates beautiful shadows due to the deep relief and texture of the carefully selected stones in this profile. Whether dry stacked or mortared, Shadow Ledgestone is sure to inspire conversations of craftsmanship and rugged beauty.

Stone Specifications:

Length: 5" to 18"

Height: 1" to 5" approx.

Thickness: 1" to 2" approx.

*Square footage is based on an installation with 1/2" grout lines.



ALPINE



BONNER COUNTY



CONIFER



MONTANA SLATE



BITTERROOT



DURANGO BROWN



GRANITE RIDGE



STRIP LEDGE

Strip Ledge is comprised of carefully crafted strips, uniform in height, with texture varying from slight to split face.

Stone Specifications:

Length: 8" to 20"

Height: 3-1/2"

Thickness: 3/4" to 1-1/2" approx.

*Square footage is based on a tight-fitted installation.



ALABASTER



BISQUE



DARK OCEAN

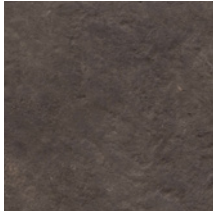


GRANITE RIDGE



ACCESSORIES

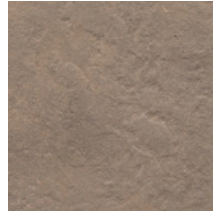
Add the finishing touch to your project using these unique trim pieces which blend beautifully with stone, brick, stucco, wood or metal. All accessories are available in six accent colors designed to complement your stone veneer color choice.



BLACK



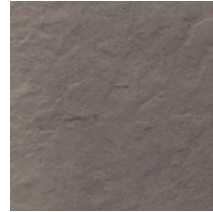
NATURAL



OATMEAL



DARK BROWN



GREY



SAND



Hearthstone ~ 12" X 20" X 2"



Peaked Capstone ~ 28" X 28"
Also available in 22" X 22" or 24" X 24"



Trimstone ~ 6" X 8"



Hearthstone ~ 20" X 20" X 2"
Also available in 24" X 24"



Split Cap 22" X 22" (with 6.5" knockout)



Keystone ~ 10" Tall



Beveled Wall Cap ~ 14" X 20"
Also available in 12" X 20"



Sill ~ 17-7/8"



Corner Sill



Light Box Trim



Electrical Box Trim
Single Outlet



Electrical Box Trim
Double Outlet



Water Faucet Trim



NON-COMBUSTIBLE MANTELS

Our non-combustible mantels are designed to mimic the appearance of natural wood mantels. They are hand finished in three colors and offered in two lengths; 60" (5 foot) or 72" (6 foot) with a standard height of 5" and a depth of 8".

Designed to be installer-friendly, these can be installed on any wall surface in a matter of minutes without special tools. Perfect for residential applications and DIY homeowners.

Available at your local Selkirk Stone dealer.



Pictured right: Country Cliffstone in Granite Ridge with a 5-foot Weathered Grey Mantel.



BARNWOOD

WEATHERED GREY

RUSTIC BROWN





ESTIMATING STONE QUANTITIES

1. Determine the total square footage of the project (length times the height of each area). Remember to subtract the square foot area of all openings (doors, windows, etc.)
2. Calculate the linear footage of outside corner stones required for the project, inside corners need not be calculated. This is the amount of corners to order. Then convert the linear footage into square feet by multiplying total lineal footage by 0.5
3. Subtract the calculated square footage for corners from total square footage to determine the amount of flats required.
4. It is recommended that an extra quantity of flats (approximately 5%) be factored into the estimated materials to allow for cutting and trimming waste.

Country Cliffstone, Northern Ledge, Mountain Ledge and Strip Ledge quantities are packaged as a tight-fitted installation, all other profiles are packaged as being installed with a grout line. If you prefer a tight-fitted installation with a profile not listed above, we recommend adding approximately 8-10% additional material.

For complete installation guidelines, please visit selkirkstone.com and click the “resources” tab to download a comprehensive guide.

NOTES: _____



ONLY THE FINEST RAW MATERIALS ARE USED DURING OUR MANUFACTURING PROCESS. ONLY THE FINEST PEOPLE ARE INVOLVED IN THE PRODUCTION OF OUR PRODUCTS. THIS ENSURES THAT YOUR STONE INSTALLATION WILL NOT ONLY LOOK AMAZING, IT WILL ALSO STAND THE TEST OF TIME. OUR PRODUCTS ARE BACKED BY A 50 YEAR WARRANTY, PROVIDING YOU PEACE OF MIND, THAT THE IMPRESSION YOU MAKE WITH THEM IS BUILT TO LAST.

PROUDLY DISTRIBUTED BY:

SELKIRKSTONE.COM