



# Service Bulletin

Bulletin No.: 18-NA-183

Date: August, 2019

## TECHNICAL

**Subject: Squeak and/or Clunking Noise from Rear of Vehicle**

Brand:	Model:	Model Year:		VIN:		Engine:	Transmission:
		from	to	from	to		
Chevrolet	Silverado 1500	2014	2018			All	All
	Silverado LD	2019	2019				
GMC	Sierra 1500	2014	2018				
	Sierra Limited	2019	2019				

<b>Involved Region or Country</b>	North America and N.A.Export Markets
<b>Condition 1</b>	Some customers may comment about a squeaking and/or clunking noise coming from the rear of vehicle.
<b>Condition 2</b>	Some customers may comment about a squeaking noise coming from the rear of vehicle.
<b>Cause 1</b>	This condition may be caused by debris getting between the leaf springs and/or loose U-Bolts.
<b>Cause 2</b>	This condition may be caused by a faulty spring shackle.
<b>Correction 1</b>	To correct this condition, re-torque the U-bolts of the leaf spring assembly, and install new rear leaf spring inserts, following the procedure below.
<b>Correction 2</b>	To correct this condition, replace the rear shackle following the procedure below.

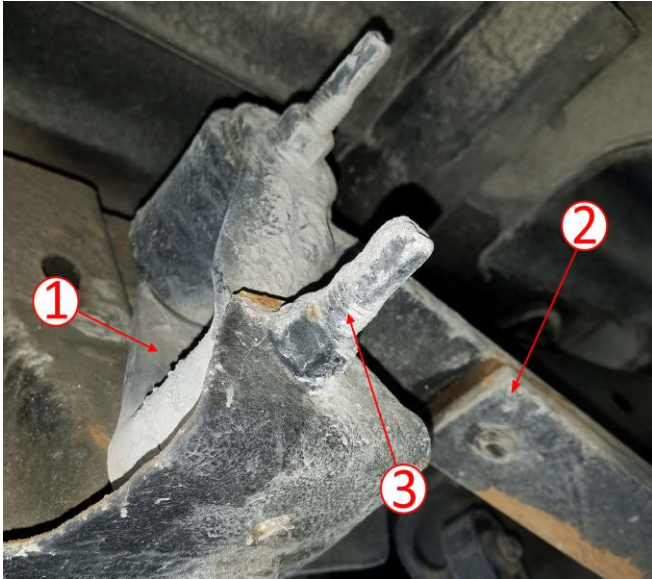
## Service Procedure

Prior to performing this bulletin, follow the procedure for Noise Diagnosis - Rear Suspension in SI to determine the source of the noise. Jounce the rear of the vehicle utilizing J 39570 Chassis Ear or equivalent, to aid in locating the source of the noise.

If necessary, road test the vehicle.

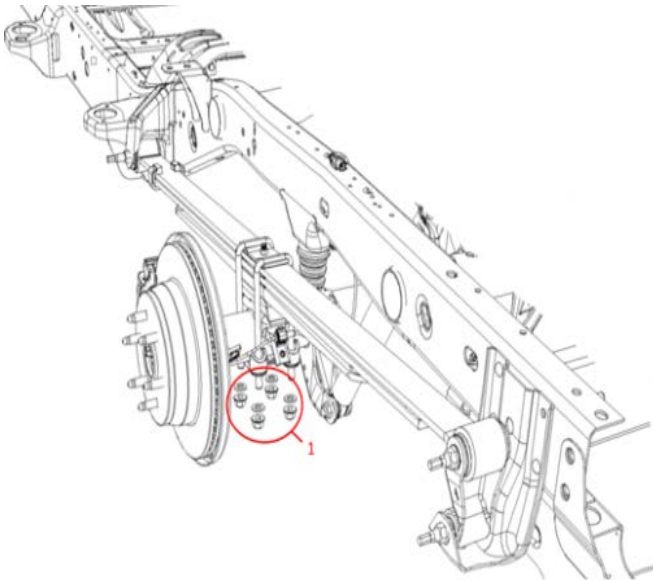
1. Raise the vehicle on a frame lift-type hoist. Refer to *Lifting and Jacking the Vehicle*, in SI.
2. Inspect the rear leaf springs and shackles for damage.
  - If damage has been found, refer to *Rear Spring Shackle Replacement or Leaf Spring Replacement (1500)*, in SI.
  - If damage has not been found, proceed to the next step.

3. Support the rear axle independently to relieve the tension on the leaf springs.



5084560

- If squeak noise is coming from the rear Spring Shackle (1) lower bolt area (3), jump ahead to step #11.
- If the noise is coming from the leaf springs (2), proceed to the next step.



5344028

4. Loosen the anchor plate U-bolts (1).
5. Re-torque the anchor plate U-bolts (1). Refer to Fastener Specifications in SI.
6. Repeat steps # 2 – 5 for the opposite side leaf spring.



5341853

7. Install new Rear Leaf Spring Inserts using the following procedure:



5341854

**Caution:** Do NOT damage the finish on Leaf Springs.

- 7.1. On the forward side of the spring assembly, insert a plastic trim tool or plastic wedge in between the #1 and #2 leaf springs, to access the old insert.



7.2. Push up on insert until it hits the bottom of the spring above it. Then use a suitable cutting tool to cut the stem off from the insert.

5341855



5341856

7.3. Remove the top portion of the insert, and then remove the bottom portion of the remaining stem.



5341857

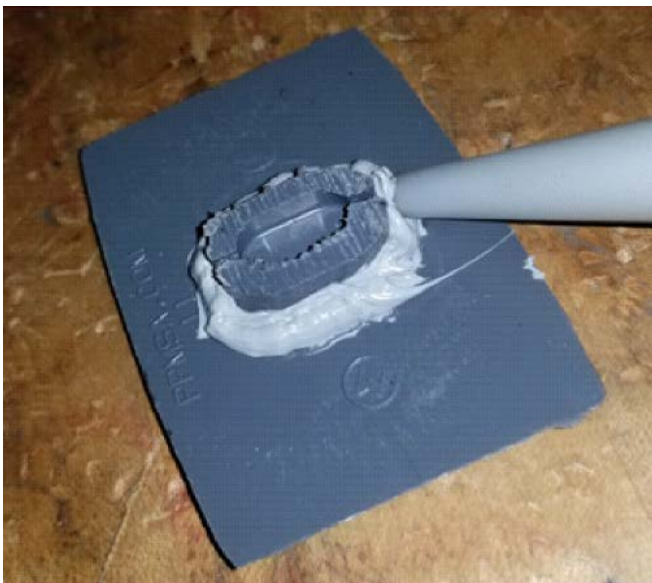
7.4. Using a rag and degreaser, clean any dirt or grease from between the leaf springs at the insert location.



5341859

**Caution:** Do NOT damage the surface of the new insert when trimming.

- 7.5. Cut the stem of the new insert with a hacksaw or suitable cutting tool. Make sure to leave 6 mm (0.240 in) of the stem.



5341861

- 7.6. Apply a small amount of RTV sealer around the remaining portion of the stem.
- 7.7. Install the new insert into the leaf spring. Make sure the stem portion lines up with the slot in the spring. Remove the plastic trim tool or plastic wedge to close the spring and seat the new insert.



5341863

**Note:** On the rearward side of the leaf spring, DO NOT trim/cut the new replacement insert.

8. On the rearward side of the spring assembly, insert a plastic trim tool or plastic wedge in between the #1 and #2 leaf springs to access the old insert.
  - 8.1. Remove the old insert.

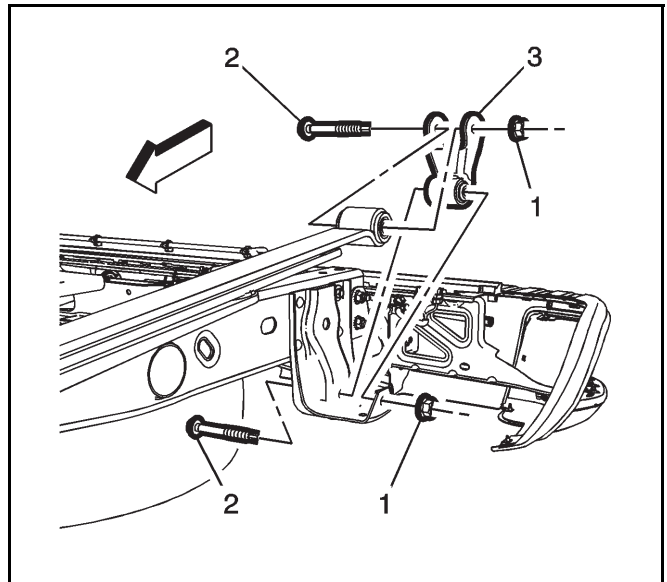


5341857

- 8.2. Using a rag and degreaser, clean any dirt or grease from between the leaf springs at the insert location.



5341862



3352112

- 8.3. Install the new full insert into the leaf spring. Remove the plastic trim tool or plastic wedge to close the spring and seat the new insert.
- 9. Repeat steps #7 and # 8 on the other side of the vehicle.
- 10. Jump ahead to step # 12.

- 11. Replace Rear Spring shackle (3). Refer to Rear Spring Shackle Replacement in SI.
- 12. Lower the vehicle to the ground and test drive to verify the repair.

**Parts Information**

Causal Part	Description	Part Number	Qty
N/A	Rear Spring Shackle	84444786	2
	Leaf Spring Insert	84730971	4
	RTV Sealer	88864346 (in Canada, 88861418)	1

**Warranty Information**

For vehicles repaired under the Bumper-to-Bumper coverage (Canada Base Warranty coverage), use the following labor operation. Reference the Applicable Warranties section of Investigate Vehicle History (IVH) for coverage information.

Labor Operation	Description	Labor Time
8080488*	Rear Leaf Spring Insert Replacement and Re-Torque Bolts	1.0 hr
8042610	Rear Spring Shackle Replacement	Use the Published Labor Operations Time

\*This is a unique Labor Operation for Bulletin use only.

<b>Version</b>	3
<b>Modified</b>	Released June 04, 2018 Revised January 16, 2019 - Add 2019 K2's to Model section. Revised August 06, 2019 – Updated Procedure, Parts and Warranty information for Spring Insert Replacement.

