



Minnesota's Resettlement Network: Services for New Arrivals in MN

DHS Resettlement Programs Office

Resettlement Programs Office Mini-Series

- **Immigration Status 101: Federal vs. State Benefits Eligibility**

- The goal of this session is to promote basic understanding (high level overview) of immigration structures in the United States and broad eligibility for federal/state programs based on immigration status.
- Wednesday September 27th at 9am

- **Minnesota's Resettlement Network: Services for New Arrivals in MN**

- The goal of this session is to build knowledge of MN Resettlement Network services and the supports available to ORR-eligible populations in Minnesota.
- Wednesday, September 27th at 11am

- **Refugee, Asylee & Immigrant Experiences: The Stories Behind the Status**

- The goal of this session is to personalize the term “immigration status” and learn from the stories behind the status. To increase understanding and empathy for the experience of being a newcomer to the US, as reflected in the lived experience of DHS RPO staff.
- Thursday September 28th at 9am

What we'll cover today

DHS Resettlement Programs Office

A Shifting Resettlement Landscape

MN Resettlement Network Services

Resources & Information

Q&A

Some acronyms you will hear!

ORR

- **US DHHS Office of Refugee Resettlement**
- This is the federal office that funds and has federal authority over our work
- You may hear the terms “ORR-funded services” and “ORR-eligible populations”

RPO

- **MN DHS Resettlement Programs Office**
- This is our team in the MN Dept of Human Services
- Amongst other things, our office funds/administers/oversees resettlement services in MN

RNS

- **Resettlement Network Services**
- This is what we call our network of service providers around the state
- RNS is funded/administered through the RPO in MN.

DHS Resettlement Programs Office

Meet the RPO Team



Teri Guhl



Kelli Schmitz



Snezhana Bessonov



Jessica O'Brien



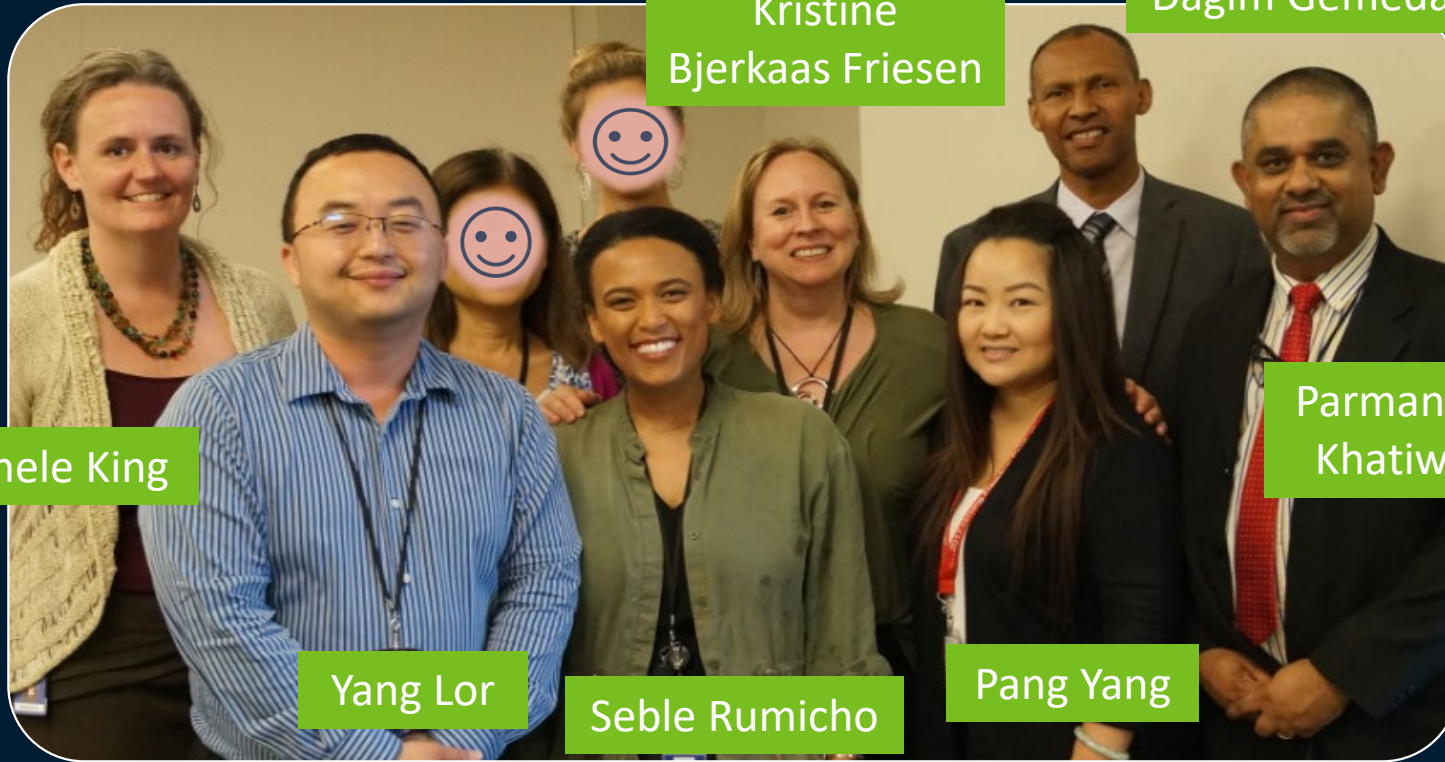
Gaoly Yang



Christy Peterson



Chel Jones



Kristine
Bjerkaas Friesen

Dagim Gameda

Rachele King

Yang Lor

Seble Rumicho

Pang Yang

Parmananda
Khatiwoda

Tetiana Banari

Samsam Abdalla

Steps in Traditional Resettlement Process



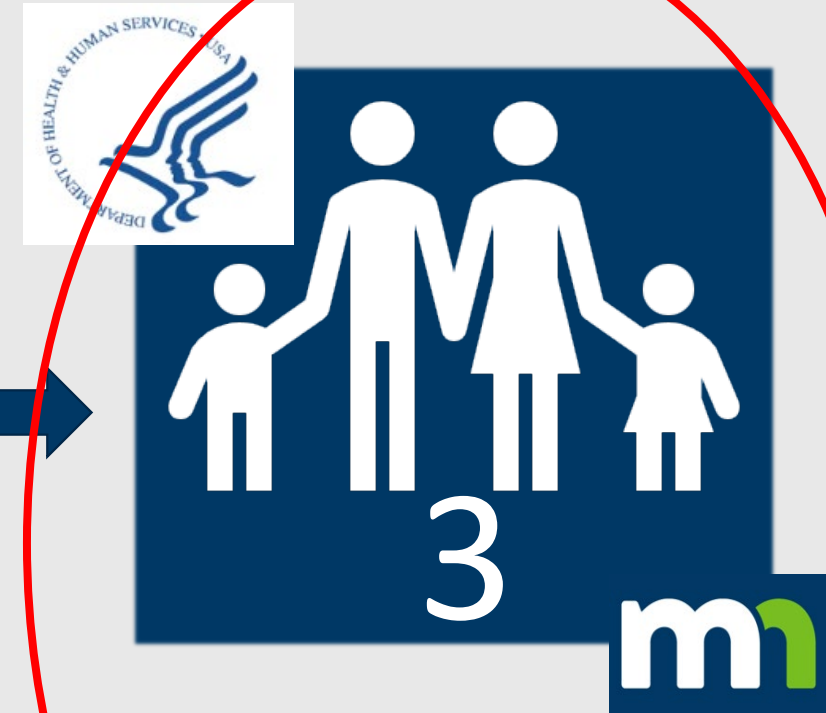
Overseas process

US Departments of State and Homeland Security



Reception and Placement

US Department of State in partnership with local resettlement agencies



Building Well-being

USDHHS (**ORR**) in partnership with states

RPO's Role in Resettlement



State Refugee Coordinator

- Federally mandated position in each state responsible for development and supervision of a state plan for resettlement.

MN DHS Resettlement Programs Office

- Led by State Refugee Coordinator (Rachele King)
- Designated role as state coordinating entity for resettlement in MN

RPO's Role in Resettlement



PLANNING & COORDINATION

- Create annual state plan for resettlement outlining supports available
- Coordinate local public and private resources serving ORR-eligible people

CONSULTATION

- Consult with state & federal government on matters impacting resettlement
- Consult with local partners engaged in MN resettlement
- Consult with new arrival communities in MN

INFORMATION

- Provide reliable information to the public about resettlement in MN
- Serve as voice for new arrivals within state government and systems

PROGRAM ADMINISTRATION

- Administer federal resources provided to the state to support new arrivals
- Focused on building wellbeing during the first 5 years after arrival.

Public Assistance Programs

- Refugee Cash Assistance
- Refugee Medical Assistance

Resettlement Network Services

- Community partners
- Supplemental services for new arrivals

Targeted Resources

- Afghan-specific services
- Ukrainian-specific services

WHO RPO SERVES in MN

WHO DOES RPO SERVE?

ELIGIBILITY FOR RPO SERVICES

- Resides in MN
- ORR-eligible immigration status
- Within 5 years of U.S. arrival or since an eligible status granted

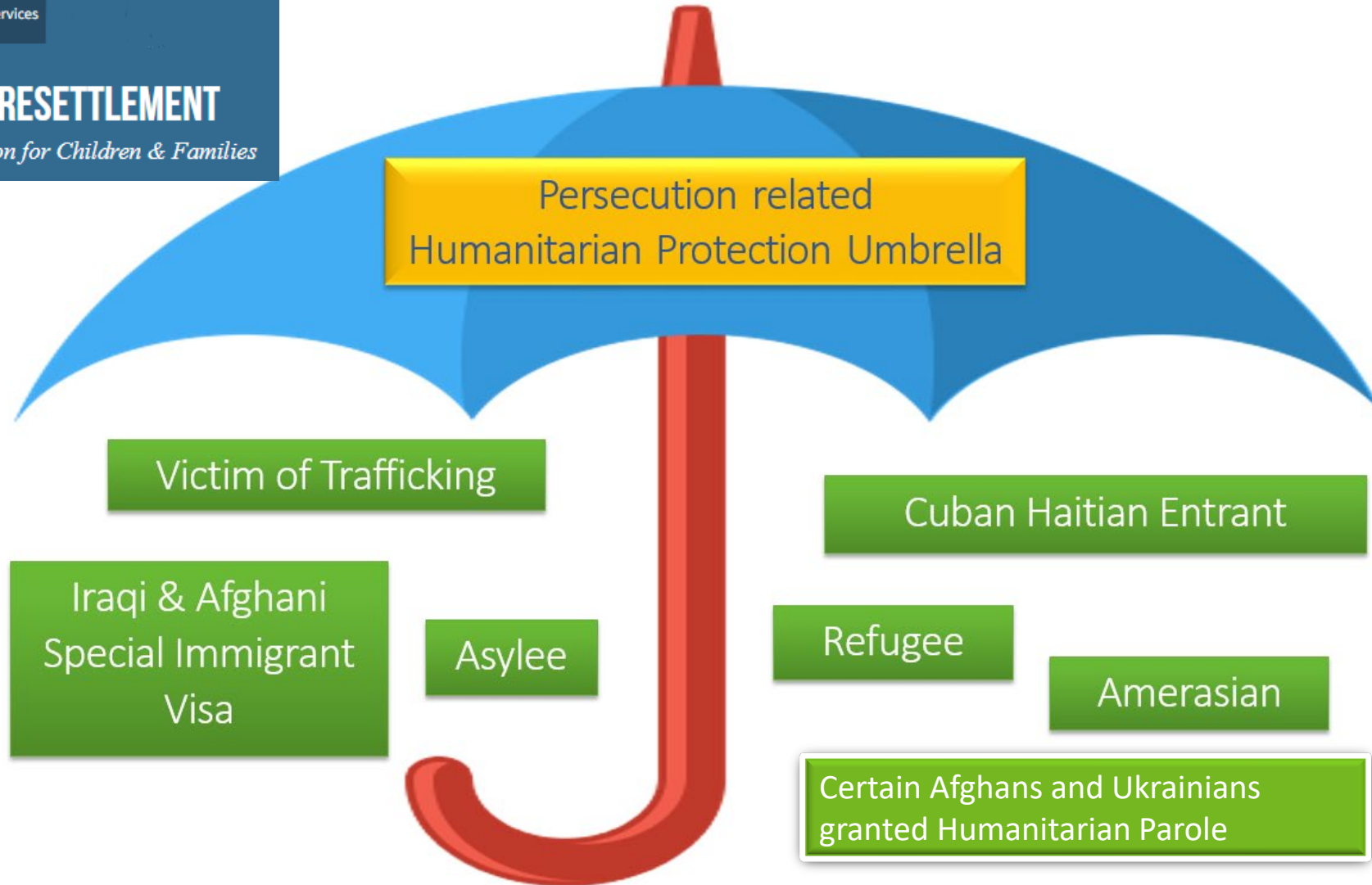
WHO DOES RPO SERVE?

Groups of Humanitarian Concern, defined by federal government (ORR)

U.S. Department of Health & Human Services

OFFICE OF REFUGEE RESETTLEMENT

An Office of the Administration for Children & Families



ORR POPULATIONS: Eligible to the same extent as Refugees

Refugees

- Status never expires.

Asylees

- Status never expires.

Special Immigrant Visa Holders

- Iraqi or Afghan

Victims of Trafficking

- Children who are certified **applicants** for a T-visa
- Adults who have been **granted** a T-visa

Amerasians

Lawful Permanent Residents who received their green card through an ORR-Eligible status

ORR POPULATIONS: Eligible to the same extent as Refugees

Ukrainian Humanitarian Parolees

- Eligible to the same extent as Refugees; who entered between February 24, 2022 and December 30, 2023.

Afghan Humanitarian Parolees

- Eligible to the same extent as Refugees; who entered between July 31, 2021 and September 30, 2023.

Cuban Parolees

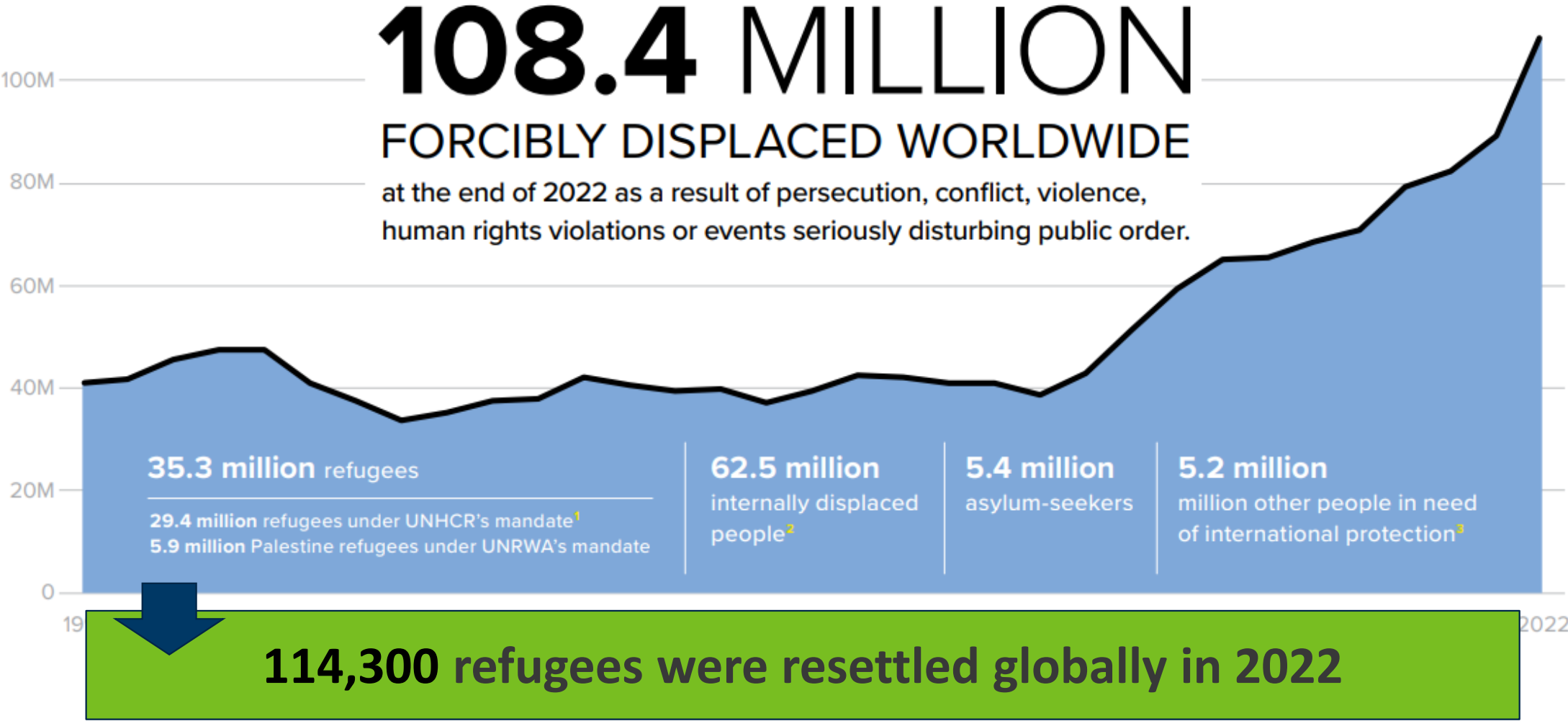
- Eligible to the same extent as Refugees

Haitian Parolees

- Eligible to the same extent as Refugees

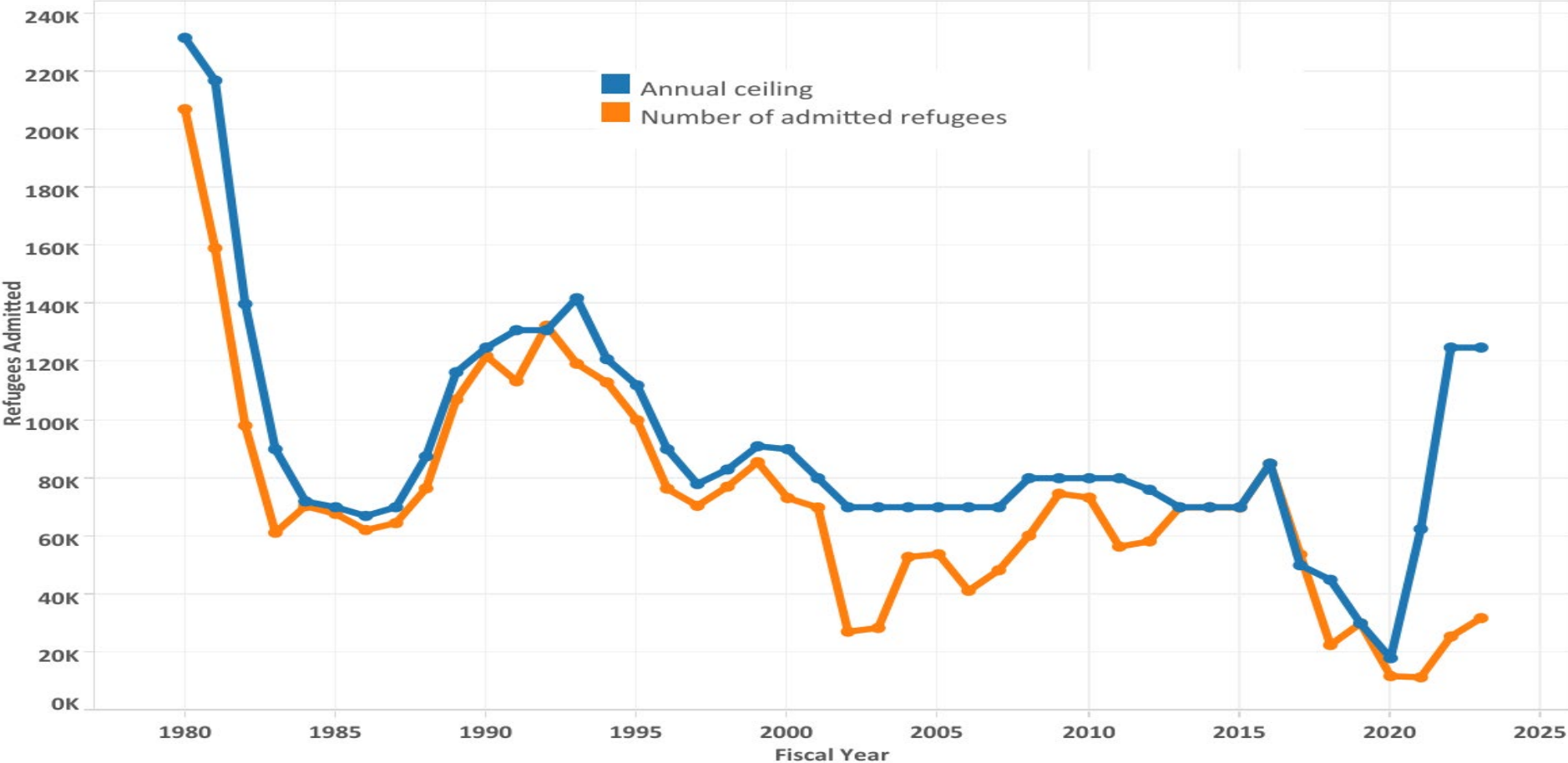
A Shifting Resettlement Landscape

GLOBAL TRENDS: Escalating Humanitarian Crisis



NATIONAL TRENDS: US Refugee Admissions Arrivals 1980-2023

U.S. Refugee Admissions & Refugee Resettlement Ceilings, FY 1980-2023 YTD*

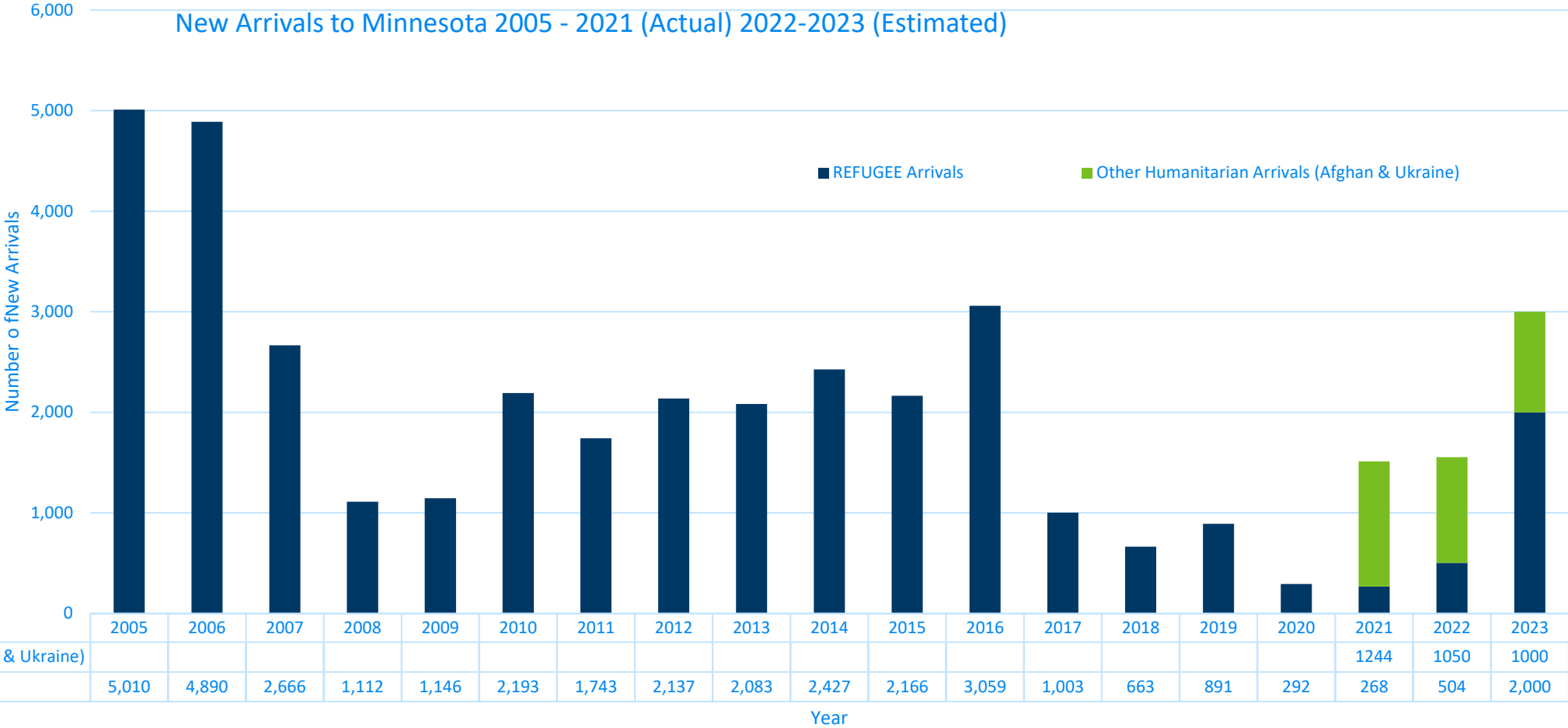


Migration Policy Institute (MPI) Data Hub
<http://migrationpolicy.org/programs/data-hub>

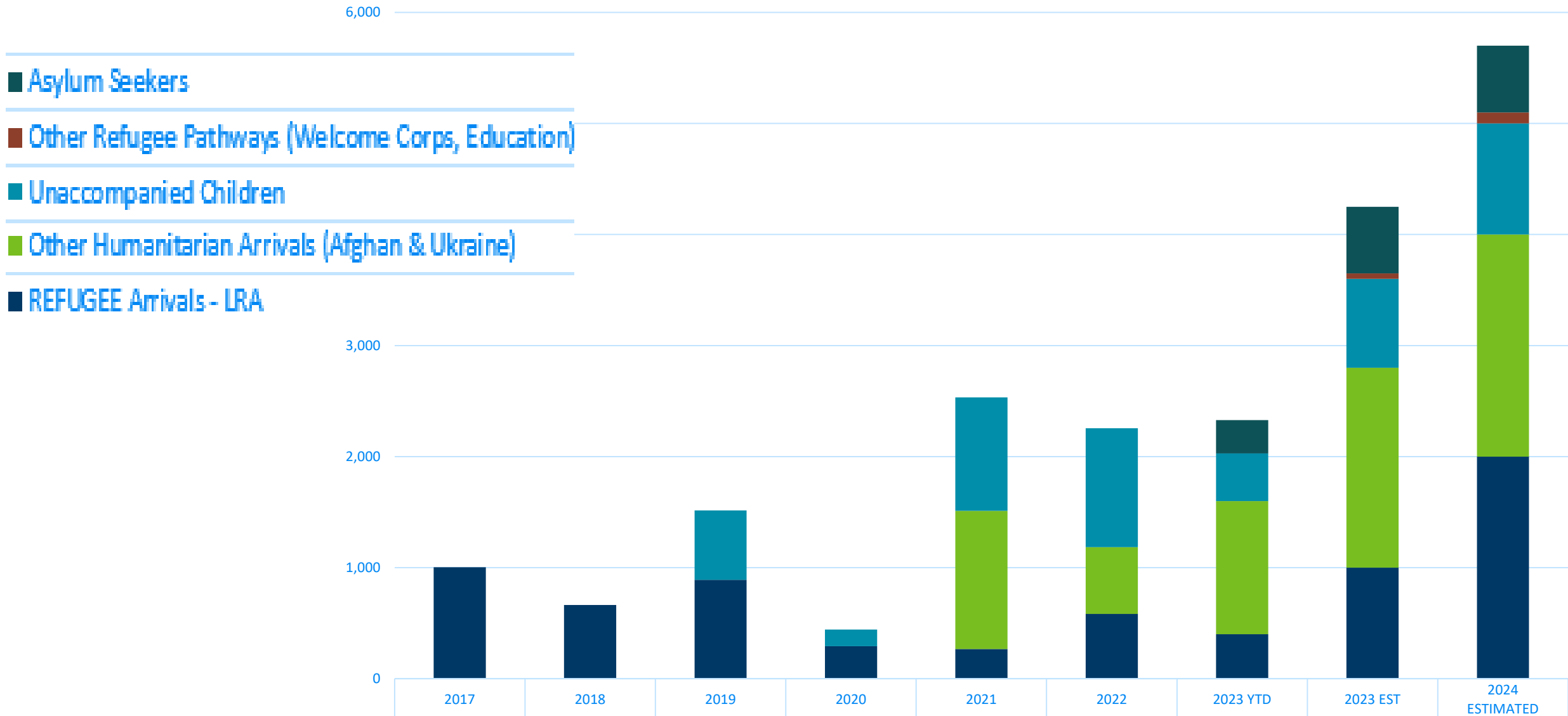
MINNESOTA TRENDS: MN Refugee Arrivals 2005-2023

Historical average 2,000 individuals / year

55 nationalities represented



MINNESOTA TRENDS: Arrivals 2017-2023



Steps in Traditional Resettlement Process



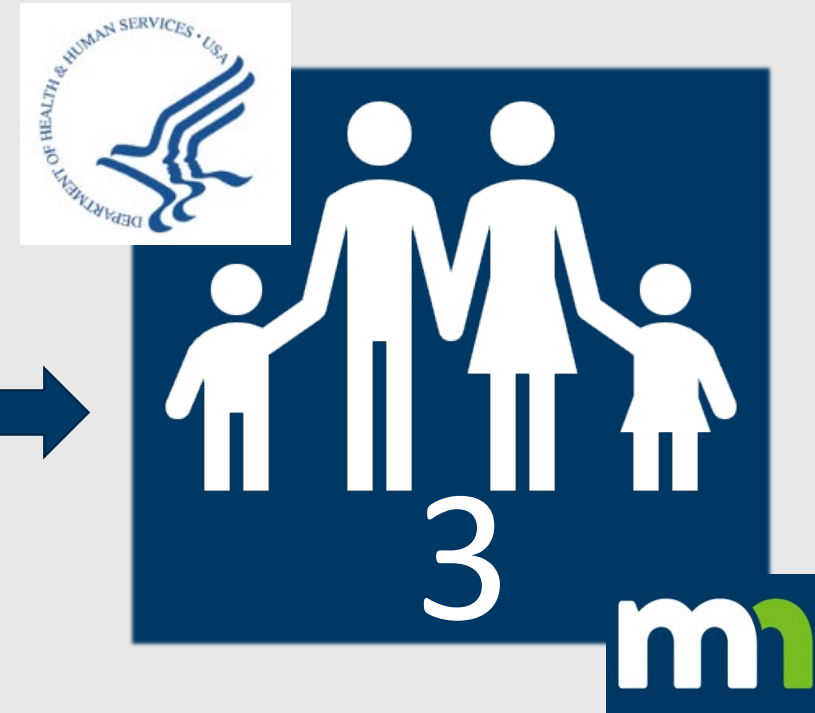
Overseas
process

US Departments of
State and Homeland
Security



Reception and
Placement

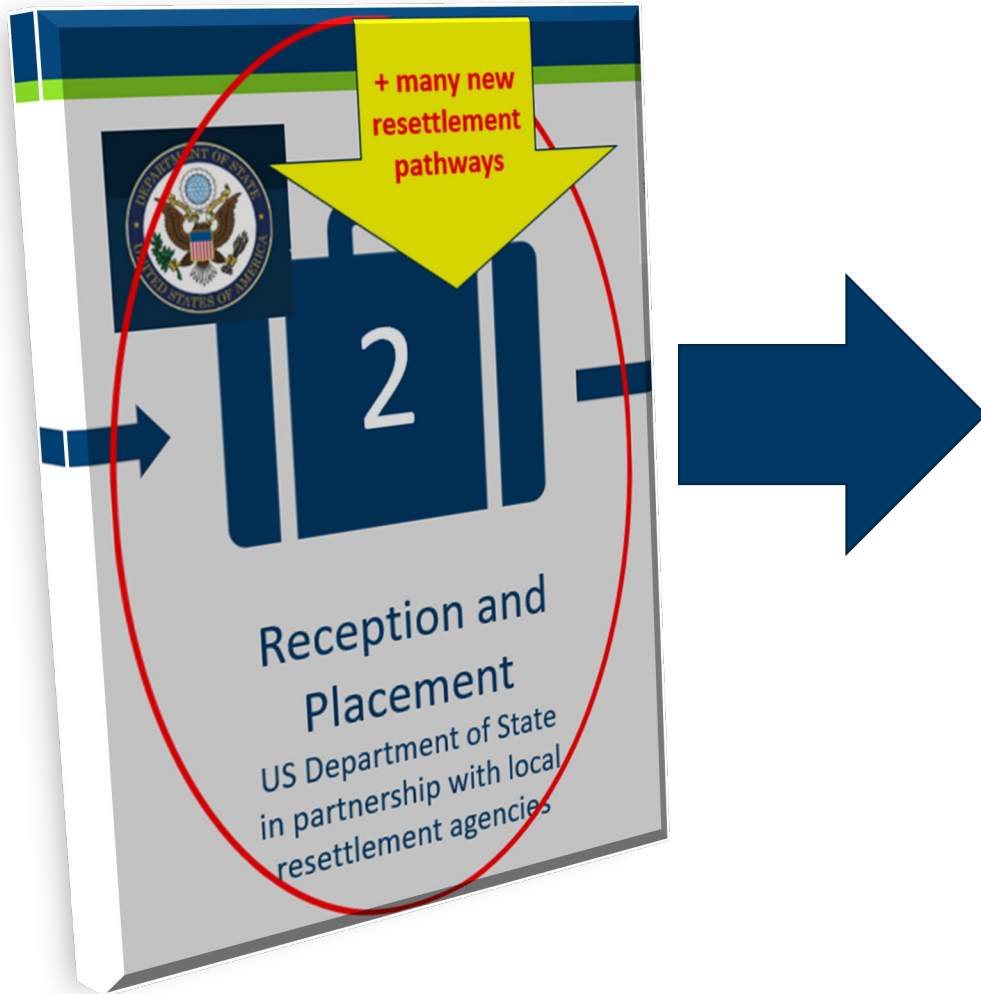
US Department of State
in partnership with local
resettlement agencies



Building
Well-being

USDHHS (**ORR**) in
partnership with
states

A SHIFTING RESETTLEMENT LANDSCAPE: Resettlement Pathways



Traditional Resettlement

- US Refugee Admissions Program (USRAP)
- Local Resettlement Agencies provide initial support

A SHIFTING RESETTLEMENT LANDSCAPE: Resettlement Pathways

Traditional Resettlement

United States Refugee Admissions Program (USRAP)

Humanitarian Pathways

Humanitarian Parole for certain Cubans and Haitians

Humanitarian Parole for certain Afghans

Humanitarian Parole for certain Ukrainians

Sponsorship Pathways

Welcome Corps

Uniting for Ukraine

Processes for Cubans, Haitians, Nicaraguans and Venezuelans

Education Pathways

Welcome Corps on Campus

Afghan Future fund or Qatar Afghan Scholarship Project (QASP)

Supporting Higher Education in Refugee Resettlement (SHERR)

Family Reunification

Immediate family members joining family who arrived through an eligible pathway

A shifting resettlement landscape: Impacts in MN

Resettlement Pathways

- Traditional refugee resettlement
- **NEW** Emergency Responses:
 - Afghan Evacuation Operation Allies Welcome
 - Uniting for Ukraine
- **NEW** Complementary / Sponsorship Pathways

Resettlement Resources

- Based on arrivals to the state
- **NEW** congressional allocations for specific communities
- **NEW** partners in response to shifting service needs
- **NEW** private resources via sponsorship pathways

A shifting resettlement landscape: Impacts in MN

Communities we serve

- Well-established cultural communities in MN
- Largely family-based reunification
- **NEW** federally defined eligible populations
- **NEW** nationalities/ethnicities/languages

Resettlement locations

- Primarily Metro/Rochester/St Cloud
- **NEW** sponsorship around the state (scattered)
- **NEW** new arrivals in areas w/fewer culturally-specific resources

Impacts / take-aways for YOU!

WHO

Who you may be serving

- New nationalities, new languages
- New backgrounds (education, technology, work experience)

WHERE

Where people may be resettling

- Scattered geographically through MN
- Not specialized resources available in all MN communities (including RPO-funded services)

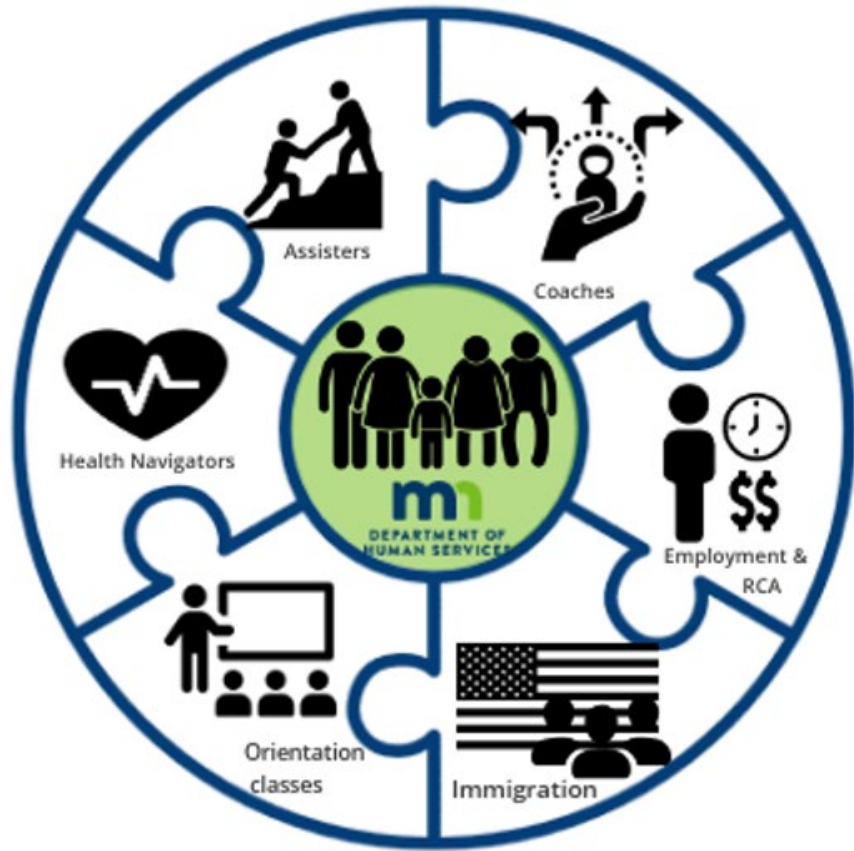
HOW

Which resettlement pathway people arrive through

- Initial supports and formal “helpers” upon arrival vary depending on pathway
- Points of access and support for benefits applications may vary depending on pathway

WHAT

All Eligible for Resettlement Network Services



MN's Resettlement Network Services

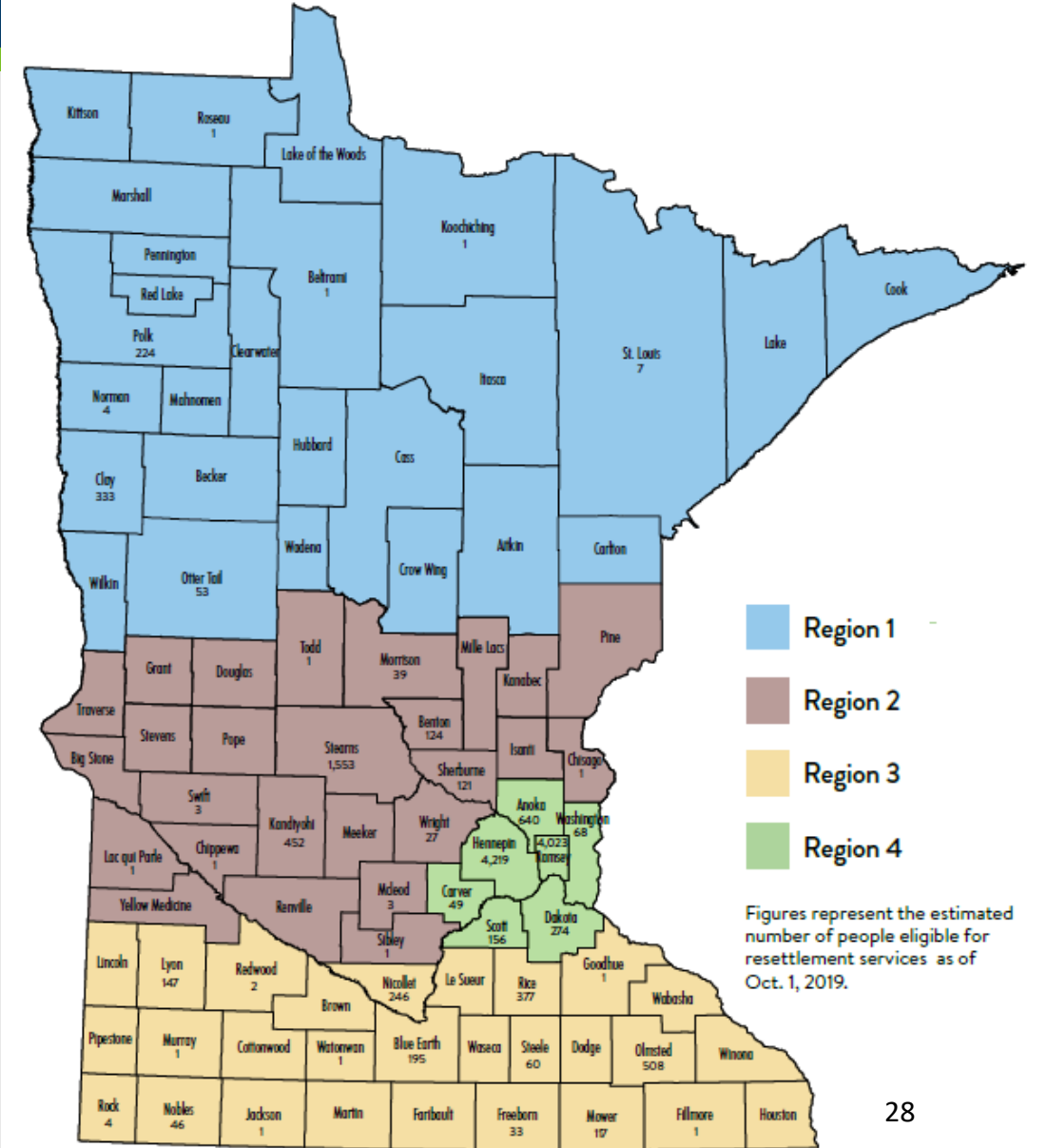
Minnesota Statewide Resettlement Network

Northern MN Resettlement Network

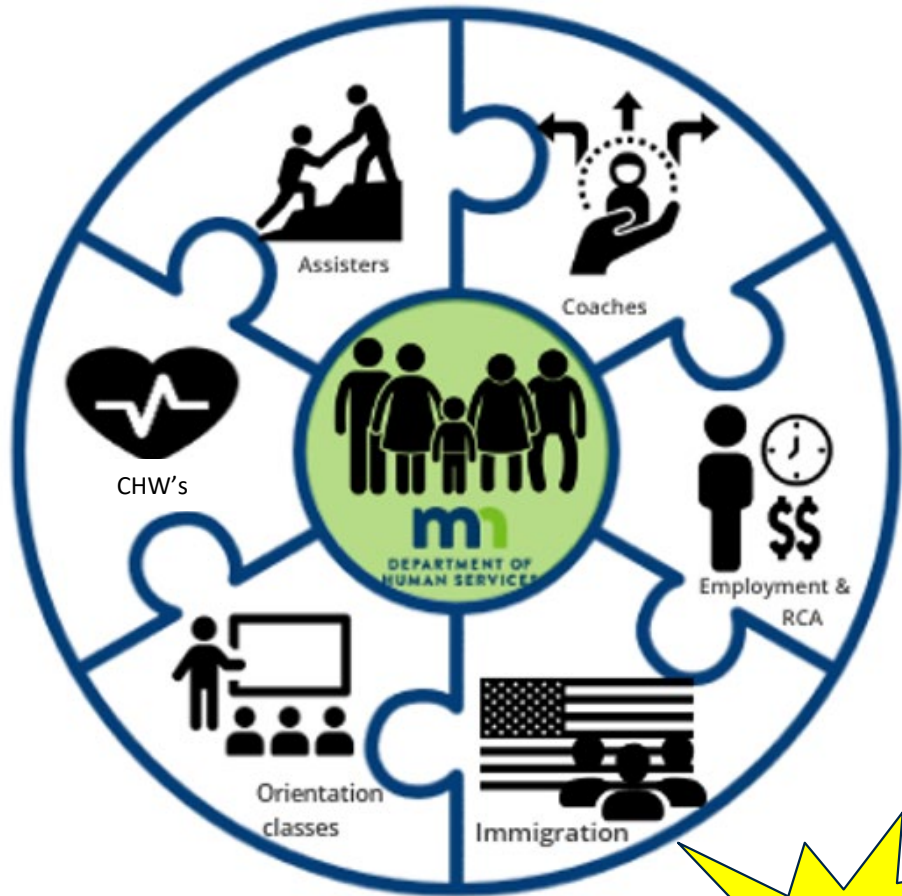
Central MN Resettlement Network

Southern MN Resettlement Network

Metro MN Resettlement Network



MN Resettlement Network Services



NEW!



Family assisters

Work with families to resolve immediate needs and connect them to community resources to strengthen well-being



Family coaches

Provide longer-term mentoring support for newcomer students struggling in school and youth transitioning out of high school.



Employment specialists

Assist people to secure and maintain employment



Community orientation workshops

Provide education for integration around employment readiness, using public transit, financial literacy, ways to get involved in the community and other relevant topics



Immigration specialists

Support people with legal services on the path to become United States Citizens



Community health workers

Support people with health needs to access services and gain skills in managing health conditions and navigating health systems

EMPLOYMENT SERVICES



Employment specialists

Assist people to secure and maintain employment

Key Functions

- Job Placement
- Job Upgrade
- Employer Relationships

IMMIGRATION SERVICES



Immigration specialists

Support people with legal services on the path to become United States Citizens



Key Functions

- Employment Authorization Documents
- Permanent Residency
- Citizenship

COMMUNITY ORIENTATION WORKSHOPS



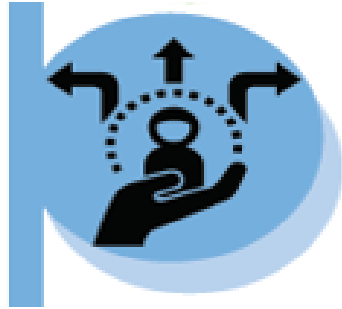
Community orientation workshops

Provide education for integration around employment readiness, using public transit, financial literacy, ways to get involved in the community and other relevant topics

Key Functions

- Orientation to many systems
- “How to” information
- Tiered workshops (basic and more in-depth)

FAMILY COACHES



Family coaches

Provide longer-term mentoring support for newcomer students struggling in school and youth transitioning out of high school.

Key Functions

- K-12 Students struggling academically, socially or behaviorally
- Youth/young adult transitions out of high school
- Parent/family engagement with schools

FAMILY ASSISTERS



Family assisters

Work with families to resolve immediate needs and connect them to community resources to strengthen well-being

Key Functions

- Short term help with immediate needs
- Connections to community resources
- SERVICE HUBS/ Walk In Hours

COMMUNITY HEALTH WORKERS



Community health workers

Support people with health needs to access services and gain skills in managing health conditions and navigating health systems

Key Functions

- Help to access & navigate health services
- Help to manage chronic conditions
- Health education & skills-building

In addition to the core Resettlement Network Services:

Afghan Legal Services

- Statewide immigration legal services available for Afghan evacuees

Afghan Housing Stability Program

- Statewide housing case management/ housing subsidy program for Afghan evacuees

MN Resettlement Corps

- AmeriCorps programs matching volunteers for 11-month service terms in Resettlement Network Services

In addition to the core Resettlement Network Services:

Refugee FOCUS – County Partners

- Services focused on MFIP-eligible, ORR-eligible families within 1st 3 years of arrival
- Stearns County | Anoka County | Hennepin County
- Parenting Resource Center (SE MN counties)

MDE & School Districts

- Building impacted schools' capacity to serve newcomers well
- Statewide (MDE) | Mpls Schools | St Paul schools

WHO ARE OUR FUNDED SERVICE PARTNERS?

30 funded partner agencies: community-based organizations, local resettlement agencies, mainstream social service agencies



RESETTLEMENT NETWORK PROVIDER DIRECTORY:

- https://mn.gov/dhs/assets/refugee-resettlement-network-directory%20%282%29_tcm1053-562922.pdf

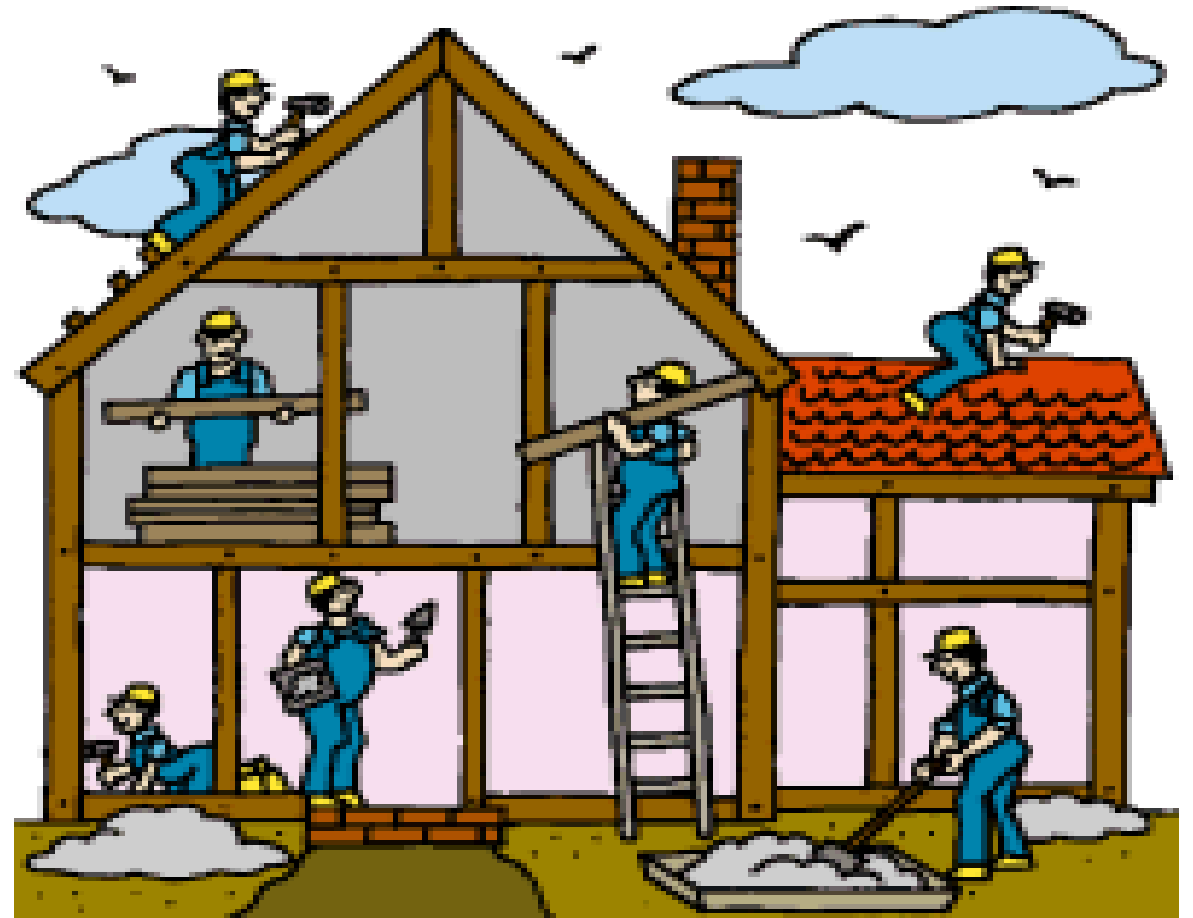
A blueprint for constructing wellbeing

Prosperity requires maximizing every individual's skills and energy to build Minnesota's economy.

To achieve this goal, we need to work together that help newcomers thrive as welcome and contributing members of Minnesota's communities

It takes many experts to “frame up” supports for newcomers as they rebuild their wellbeing **in Minnesota:**

- Employment Services
- ELL providers
- Schools
- Social Services
- Public benefit programs
- Mainstream Resources: food shelves, clothing closets
- Mainstream Services: medical, mental health, SSI



MN's Resettlement Network Services: Building Wellbeing

When refugees arrive in Minnesota, they are constructing wellbeing from the ground up. Constructing wellbeing **requires resources, expertise and collaboration:**

- Restoring refugees' health and wellbeing
- Laying a strong foundation for families to build upon
- Investing in Minnesota's economy, culture and communities
- Building our state's resources



This includes YOU as community welcome and resource access points for new arrivals!

Information & Resources

More information on our website:

- **People We Serve: populations & services**
mn.gov/dhs/people-we-serve/adults/services/refugee-assistance/
- **Partners and Providers: programs & trainings**
mn.gov/dhs/partners-and-providers/program-overviews/refugee-resettlement/
- **Resettlement Network Providers Contact List: access to RNS services**
mn.gov/dhs/people-we-serve/adults/services/refugee-assistance/resettlement-programs-office-agency-contract-list/
- **Stay Informed: Subscribe to RPO Updates**
public.govdelivery.com/accounts/MNDHS/subscriber/new?topic_id=MNDHS_207

Refugee Health and Community Partners and Sponsors

- A brief overview of the Minnesota Department of Health (MDH) Refugee Health Program (RHP), the Minnesota Refugee Health Assessment, and information regarding health requirements for humanitarian parolee arrivals.
- <https://www.health.state.mn.us/communities/rih/partners/index.html>

Minnesota State Resource Map

- Key benefits and services for newcomers within the Welcome Corps program.
- <https://refugeewelcome.org/state-resources/minnesota/>

Arrivals Data

- Data for arrivals with refugee status through the U.S. Refugee Admissions program (also known as Primary Arrivals) is shared by the Federal government
- <https://www.wrapsnet.org/admissions-and-arrivals/>

Switchboard

- A resource hub for refugee service providers. Offers tools and materials, learning opportunities, research, and technical assistance on resettle-related topics.
- <https://switchboardta.org/>

Cultural Orientation Resource Exchange (CORE)

- A resource that has cultural backgrounders on various populations, tailored to cultural orientation processes, and many other relevant and useful resources and training and technical assistance
- <https://coresourceexchange.org>

Center for Adjustment, Resilience, and Recovery (CARRE)

- A training and technical assistance project focusing on providing quality mental health and psychosocial support services for children and families who have experienced forced displacement by acting as a bridge between refugee/immigrant providers and mental health providers.
- <https://carreirc.org/>

Bridging Refugee Youth and Children's Services

- Information and resources on programs serving refugee children, youth and their families
- <https://brycs.org/>

Resettlement and Sponsorship Pathways

U. S. Refugee Admissions Program (USRAP)

- The U.S. Refugee Admissions Program (USRAP) accepts referrals for refugees determined to be particularly vulnerable and in need of the protection provided by third-country resettlement. The program provides a pathway for resettlement to the United States under the Immigration and Nationality Act (INA).
- www.state.gov/refugee-admissions/

Sponsorship Pathways

- Welcome Corps: welcomecorps.org
- Uniting for Ukraine: www.uscis.gov/ukraine
- Processes for Cubans, Haitians, Nicaraguans, and Venezuelans: www.uscis.gov/CHNV
- To learn more about becoming a sponsor via one of these three pathways and access additional resources: welcome.us/become-a-sponsor
- For support in becoming a Sponsor: wearealight.org/

Together, We are Minnesota: <https://MN.gov/dhs/outstanding-refugees/>

m DEPARTMENT OF HUMAN SERVICES
Newly arrived or here for generations
Together we are Minnesota



Photo courtesy of Bole Kader

Interpreter. Engineer. Citizen. Former refugee.

“I studied aircraft engineering as an international student in the U.S. and then returned home to Iraq to work for an American company. Because of my ties to America, my life was threatened, and my family and I had to escape. Minnesota gave us a new home.”

Help us recognize Minnesotans who give back to the community. To read more of Jamal's story or submit nominations for the annual Outstanding Refugee Awards, visit: mn.gov/dhs/outstanding-refugees/.

m DEPARTMENT OF HUMAN SERVICES
Newly arrived or here for generations
Together we are Minnesota



Photo courtesy of Bole Kader

Community organizer. First-generation college graduate. Former refugee.

“My family fled from Burma as refugees. When I first came to Minnesota, I was the only Karen student in my elementary school. I was bullied a lot growing up. I have learned that you can't give up and get discouraged. You must continue to work hard to accomplish your dreams.”

Help us recognize Minnesotans who give back to the community. To read more of Kadijah's story or submit nominations for the annual Outstanding Refugee Awards, visit: mn.gov/dhs/outstanding-refugees/.

m DEPARTMENT OF HUMAN SERVICES
Newly arrived or here for generations
Together we are Minnesota




Photo courtesy of Bole Kader

CEO. Philanthropist. Citizen. Former refugee.

“I came to Minnesota as a refugee from Ethiopia when I was 20. I had to start life over. I was a school teacher before I had to leave my home, but my first job here was washing dishes. I always worked two jobs to make ends meet, but the challenges I faced in the past made me stronger. The tough experiences I went through were teaching moments for me.”

Help us recognize Minnesotans who give back to the community. To read more of Tashita's story or submit nominations for the annual Outstanding Refugee Awards, visit: mn.gov/dhs/outstanding-refugees/.

“Neither revolution nor reformation can ultimately change a society, rather you must tell a more powerful tale, one so pervasive that it sweeps away the old myths and becomes the preferred story.” - Ivan Illich

