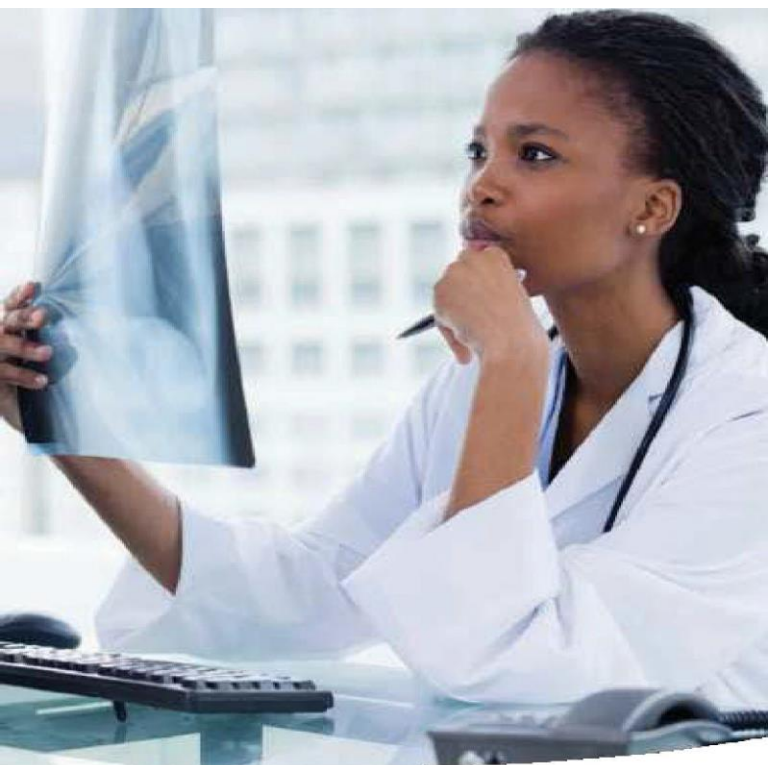


Network Imaging Centers Near You



Where You Go for Care Matters

When your doctor orders an X-ray, MRI, CT scan, ultrasound, or other radiology/imaging service, consider using a nonhospital-affiliated freestanding imaging center instead of a hospital-affiliated center. These centers offer you quality care and may save you time and money, too.

Confirm Network Participation

Before scheduling your service, please be sure to confirm that the provider is in your plan's network:

- Call the Member Service number on your Highmark Delaware ID card.
- Log in to your member website at **myhighmark.com**. Then select the **Find a Doctor** tab to begin a search.

Network Imaging Centers

Information is current as of April 2024. For more providers or to confirm network participation, contact Member Services at the number on the back of your ID card.

AKUMIN

2501 Silverside Road, Suite 2
Wilmington, DE 19810

302-246-2000

Basic and High-Tech Imaging/Radiology

AKUMIN

1010 North Bancroft Parkway, Suite 103
Wilmington, DE 19805

302-472-5555

Basic and High-Tech Imaging/Radiology

AKUMIN

Sussex Professional Center
407 South DuPont Boulevard
Milford, DE 19963

302-424-0500

Basic and High-Tech Imaging/Radiology

AKUMIN

1 Centurian Drive, Suite 107
Newark, DE 19713

302-738-1700

High-Tech Imaging/Radiology

AKUMIN

Herring Ith Services Drive, Suite 303
Seaford, DE 19973

302-628-3500

Basic and High-Tech Imaging/
Radiology

AKUMIN

240 Beiser Boulevard, Suite 100 Dover,
DE 19904

302-730-9300

Basic and High-Tech Imaging/Radiology

Ambient Medical Care LLC

877-629-2621

24459 Sussex Highway, Suite 2
Seaford, DE 19973

Bear MRI and Imaging Center LLC

101 Becks Wood Drive, Suite 103
Bear, DE19701

302-834-4500

Basic and High-Tech Imaging/Radiology

Delaware Imaging Network

2055 Limestone Rd
Suite 104
Wilmington, DE 19808

877-990-2121

Delaware Imaging Network

3206 Concord Pike
Wilmington, DE19803

302-654-5300

Basic and High-Tech Imaging/Radiology

Delaware Imaging Network

3401 Brandywine Parkway, Suite 102
Wilmington, DE19803

302-533-2160

Basic and High-Tech Imaging/Radiology

Delaware Imaging Network

L-6, Omega Drive
Newark, DE 19713

302-738-9300

Basic Imaging

Delaware Imaging Network

40 Polly Drummond Hill Road, Building 4
Newark, DE 19711

302-737-5990

Basic and High-Tech Imaging/Radiology

Delaware Imaging Network

Omega Professional Center
J24-26 Omega Drive 302-738-9100
Newark, DE 19713
Basic Imaging/Radiology

First State Imaging Center

1000 Twin C Lane, Suite 100
Newark, DE 19713 302-731-2888
High-Tech Imaging/Radiology

Limestone Open MRI and Imaging Center

2060 Limestone Road, Suite 202
Wilmington, DE 19808 302-246-2001
Basic and High-Tech Imaging/Radiology

Delaware Imaging Network

710 S. Queen Street 302-734-9888
Dover, DE 19904
Basic and High-Tech Imaging/Radiology/Nuclear Medicine

Ocean Medical Imaging of Delaware Inc.

Milton Medical Park
611 Federal Street 302-684-5151
Milton, DE 19968
Basic and High-Tech Imaging/Radiology

Ultrasound Express

550 S Dupont Blvd, Suite A
Milford, DE 19963 302-422-2612
Diagnostic Ultrasounds

Limestone Open MRI and Imaging Center

1306 South Dupont Highway,
Dover, DE 19901 302-246-2001
Basic and High-Tech Imaging/Radiology

Limestone Open MRI and Imaging Center

374 East Main St.,

Middletown, DE 19709

302-246-2001

Basic and High-Tech Imaging/Radiology

Delaware Imaging Network – Milford

939 N DuPont Blvd Suite 140

Milford, DE 19963

302-553-2111

Mammography only

Open MRI & Imaging at Principio

4863 Pulaski Hwy, Suite 100

Perryville, MD 21903

410-642-3014

Basic and High-Tech Imaging/Radiology

Open MRI and Imaging Center of Elkton LLC

301 Augustine Herman Highway, Suite A

Elkton, MD 21921

410-620-1900

Basic and High-Tech Imaging/Radiology

Peninsula Imaging LLC

Woodbrooke Medical Complex

1655 Woodbrooke Drive, Suite 101

Salisbury, MD 21804

410-749-1123

Basic and High-Tech Imaging/Radiology

First State Imaging Center

285 Beiser Boulevard, Suite 101

Dover, DE 19904

302-731-2888

Radiology

First State Imaging Center

12100 Black Swan Drive, Suite 101

Lewes, DE 19958

302-644-3311

Radiology

Southern Delaware Imaging, LLC

424 Savannah Road
Lewes, DE 19958

302-645-3300

Radiology

Highmark Blue Cross Blue Shield Delaware is an independent licensee of the
Blue Cross Blue Shield Association.

4/24 Z MX278835