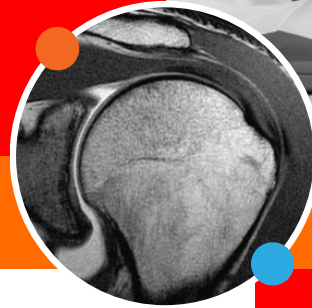


# WE HAVE THE RIGHT MRI FOR EVERY PATIENT



WE BRING BRILLIANCE TO HEALTH & WELLNESS

## OUR IMAGE-QUALITY

The subspecialized radiologists have developed custom protocols for each scanner, ensuring the best image quality is obtained.

Our equipment is ACR certified and our technologists are ARRT registered.

## BEST OPTIONS FOR PATIENTS

Our dedicated staff is specifically trained to work with your patient and schedule the exam they need on the right scanner for them

With our open MRI options, we can scan claustrophobic and bariatric patients

To reduce anxiety, patients are given extra time to ensure comfort and are welcome to view the MRI equipment prior to the exam



**SCHEDULE  
A PATIENT**

CALL  
FAX

CALL  
FAX

CALL  
FAX

CALL  
FAX

CALL  
FAX

CALL  
FAX

[RAYUSradiology.com](http://RAYUSradiology.com)

cdi IS NOW  
**RAYUS**  
RADIOLOGY™

**RAYUS**  
RADIOLOGY™  
MARSHWOOD

# MRI OPTIONS



**EXPERIENCE:**

**WEIGHT LIMIT:**



**EXPERIENCE:**

**WEIGHT LIMIT:**



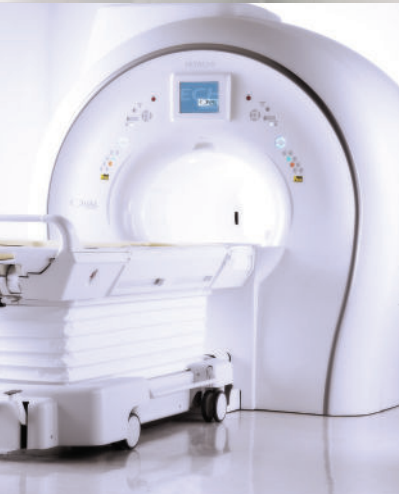
**EXPERIENCE:**

**WEIGHT LIMIT:**



**EXPERIENCE:**

**WEIGHT LIMIT:**



**EXPERIENCE:**

**WEIGHT LIMIT:**

[RAYUSradiology.com](http://RAYUSradiology.com)

EDI IS NOW  
**RAYUS**  
RADIOLOGY™

**RAYUS**  
RADIOLOGY™  
MARSHWOOD