

Fidelity Active Trader Pro® Hidden Gems



1. Hide Wash Sales from basis column in Positions and Closed Positions tool

Exclude wash sales from viewing on your Positions tool by adding one of the following Unadjusted columns: Basis, Purchase Price, G/L, or G/L %. You can add or remove columns from your Positions tool by right clicking the column header or by accessing your settings to set up default columns for your Positions. Easily drag-and-drop your columns to place them in the order you prefer.

Wash sales can be removed from viewing on the Closed Positions tool by checking the Unadjusted G/L box towards the top of the tool.

Symbol	Unadj Basis	Unadj G/L	Unadj % G/L	Unadj Purchase Price
FCASH	--	--	--	--

Available Columns

- Select All
- Tdy G/L
- Tdy % G/L
- G/L
- % G/L
- Unadj Basis
- Unadj G/L
- Unadj %G/L
- Unadj Purchase Price
- Type

YTD Total G/L **-\$314,763.10*** Short-Term G/L **-\$298,078.59*** Long-Term G/L **-\$16,684.51***

Symbol	Quantity	Basis	Unadj Basis	Short-Term G/L
CAT150117C92.5	3	2,458.27	2,458.27	-2,458.27
COH	542	19,263.38	19,263.38	1,144.97
DB	130	3,772.61	3,932.27	135.24
DDD	200	7,799.16	6,508.90	-2,207.70
DIS	100	9,070.08	9,070.08	-503.91
ETRM	100	112.00	112.00	-0.01
ETSY	48,320	914,703.55	914,703.55	-143,545.31
ETSY150619C15	13	763.08	763.08	-763.08
F150117C18	4	84.10	84.10	-84.10

2. Heat Map - Positions / Watch List

Use the Heat Map toggle on the Positions and Watch List tool to see a visual of how securities are performing throughout the day.

Choose from multiple set criteria such as Today's G/L \$, P/E Ratio, or Yield just to name a few. Also, group your positions by Symbol, Sector, or No Grouping at all.

Symbol	% Change	Symbol	% Change	Symbol	% Change	Symbol	% Change
AAPL	-1.30%	CHK	1.18%	FIT	-2.03%	GPRO	-7.14%
AMGN	1.60%	DRIP	-2.37%	GOLD	-0.50%	PCLN	-1.34%
AMZN	1.58%	DUST	2.29%			PLAY	3.51%

Fidelity Active Trader Pro® Hidden Gems



3. View / Manage Open Orders from your Positions tool

Add the Trade Armor shield to your positions tool to easily view open order on your positions. Hover over the Trade Armor shield to manage open orders or place new orders.

Symbol	Description	Trade Armor	Notebook	Earnings Date	Signal
GDV	MARKET VECTORS GOLD MI			--	--
GDV	MARKET VECTORS GOLD MI			--	--
GE	GENERAL ELECTRIC COMPA			01/22/2016	--
GPRO	GOPRO INC			02/04/2016	--
H	HYATT HOTELS CORPORATI			02/18/2016	--
IBB	ISHARES NASDAQ BIOTECH				
IBM	INTERNATIONAL BUSINESS				
IBM	INTERNATIONAL BUSINESS				

Easily add the Trade Armor column to your positions tool by right clicking the column header or by accessing your settings to set up default columns for your Positions.

4. Set Custom Stock & Option trading defaults

Decrease your order entry time by setting your default trading preferences for both stock and option orders from the Settings tab in the top right hand corner of the platform. You have the ability to set a default trading account, ticket, and trade type. Dive even deeper and enable a default quantity, order type, TIF, Condition, and Preset Buy/Sell limit.

Trade

General | **Stock Defaults** | Option Defaults

Default Trading Account: TRADITIONAL IRA (105954)

Default Trade Ticket: Standard Trade Ticket

This ticket will be launched when trading from other tools.

5. Take advantage of keyboard shortcuts to increase navigation speed

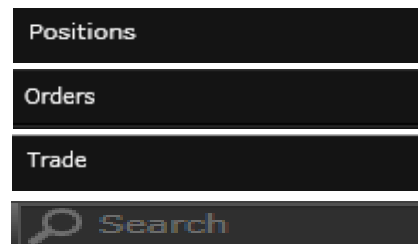
Use hot-keys to quickly navigate ATP tools:

Ctrl + P to launch positions

Ctrl + O to launch orders

Ctrl + T to launch default trade ticket

Ctrl + F to move cursor into the search bar



Up/down arrows on the keyboard can be used to increase limit orders or share quantities on the trade ticket.

Fidelity Active Trader Pro® Hidden Gems



6. Pre-fill trade tickets by selecting Bid/Ask

Pre-fill trade tickets by selecting a Bid/Ask price from a range of tools including Quotes, Watch List, Option Chain and Trade Armor.

The first screenshot shows the quote for AAPL INC with the bid price of 574.31 and ask price of 574.45 highlighted in a yellow box. The second screenshot shows a watch list with the bid price of 53.64 and ask price of 53.65 highlighted in a yellow box. The third screenshot shows the trade ticket for AAPL with the bid price of 573.07 pre-filled in the Limit field.

7. Create or cancel multiple orders

To create more than one trade at a time, select multiple rows from a Watch List or Positions tool by holding the Shift or Control key and left-click on the rows. Use Control + Click to select individual rows and Shift + Click to select a group of rows. Then right-click and choose Trade from the available options to send them to the multi-trade ticket.

To simultaneously cancel multiple orders in the orders tool, use Shift + Click or Control + Click to select the orders you want to cancel. Then right-click and choose Cancel Orders from the available options

The screenshot shows a watch list with a context menu open over the AAPL row. The menu options are Trade, Chart, Set Price Alert, Dock Window, Export, and Help. The multi-trade ticket shows the following orders:

Account	Symbol	Trade Description	TIF	Value
Demo Account (X29)	EMC	[Action] 100 Limit at \$25.00	Day	2,500.00
Demo Account (X29)	MSFT	Buy [Qty] Limit at \$39.99	Day	--
INDIVIDUAL (X7093)	SBUX	[Action] [Qty] Limit at [Limit Price]	Day	--

Buttons: Add Order, Place 0 of 3 Selected Orders

Fidelity Active Trader Pro® Hidden Gems

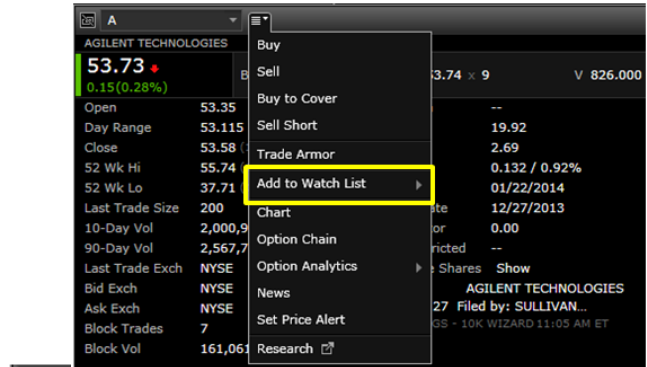


8. Customized Watch Lists

Add a symbol to your custom watch list directly from the Quote, Chart, Filters and Option Chain tools using right-click or the symbol action menu.

Quickly edit symbols in your custom watch list by using the overwrite feature. Simply click once into the symbol field, type the new symbol and click out or hit enter to save your changes.

Right-click on a column header to add or remove columns and customize your view. You can also drag-and-drop columns to reorder them.

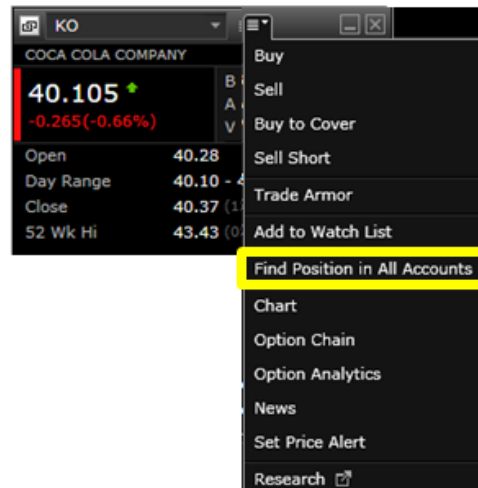


Symbol	Last	Chg	% Chg	Bid	Ask	Volume
AKAM	51.27	0.70	1.38	51.29	51.41	2,276,643
RCI	41.85	0.25	0.60	41.77	41.99	374,919
PG	79.05	0.79	1.01	79.03	79.24	4,883,212
TMK	72.17	0.02	0.03	72.13	72.35	139,606
AMZN	297.92	-0.94	-0.31	297.32	298.00	1,349,392
DAL	22.47	0.30	1.35	22.49	22.53	15,009,192
PNRA	166.98	-1.48	-0.88	162.63	168.92	557,557

Symbol	Last	Chg	% Chg	Volume	News	Day Range	52 Wk
A	39.74	-0.22	-0.55	341	--	39.44 - 39.85	28.67 -
A	39.74	-0.22	-0.55	41	--	39.44 - 39.85	28.67 -
B	24.22	0.40	1.68	41	--	23.51 - 24.27	17.47 -
C	27.398	0.488	1.81	666	1:02 PM ET	26.36 - 27.47	21.40 -
MA	415.215	-0.495	-0.12	34	11:34 AM ET	410.91 - 415.90	264.87 -
C	27.398	0.488	1.81	666	1:02 PM ET	26.36 - 27.47	21.40 -

9. Use the Find Position in All Accounts feature to identify and quickly sell a security across multiple accounts

From the Action Menu select Find Position In All Accounts, which will only display for securities you own. Use the Close All button to launch the multi-trade ticket, which will be pre-populated with your positions in that security.

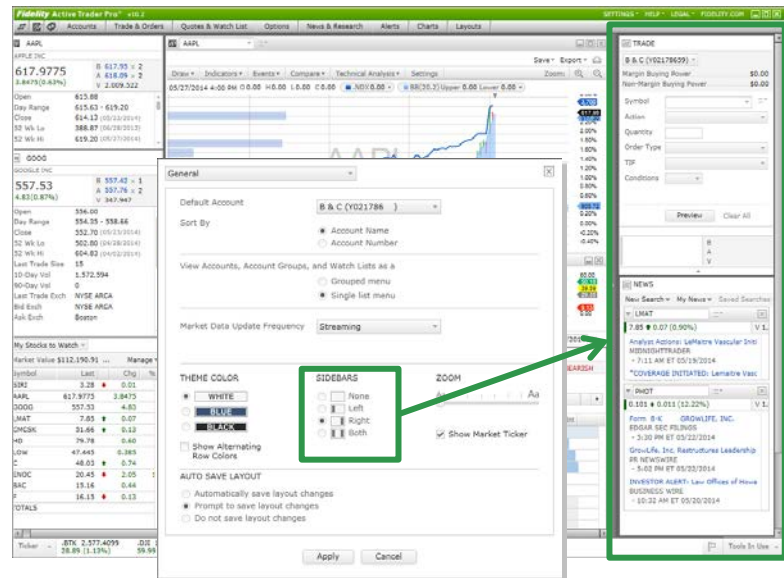


Fidelity Active Trader Pro® Hidden Gems



10. Use sidebars to maximize screen real-estate

Enable sidebars from the Settings Menu Select General and then select the sidebar layout you prefer: left, right or both. Once enabled, you can easily drag-and-drop tools such as Quotes, News, Alerts, and more into the sidebars. Tools automatically resize when dropped into a sidebar. Select the arrow to open or close the sidebar.



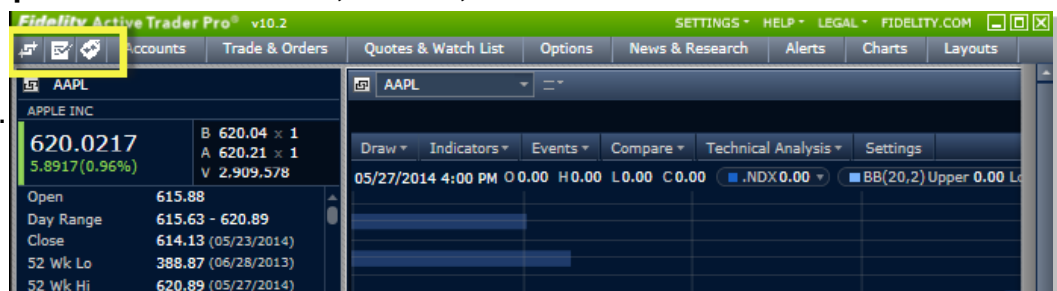
11. Float individual tools outside of the ATP platform and onto other monitors (ATP desktop version only)

Right-click in a tool and select Float Window to place that tool outside of the ATP platform. Return it to the platform by right-clicking and selecting Dock Window. Hold down the Ctrl key to open a tool from the main menu in Float mode.



12. Shortcuts provide quick access to Trade, Orders, & Quote tools

Shortcut icons are located to the left of the main navigation toolbar. Use them to launch the Trade Ticket, Orders, and Quote tools with one click.



Fidelity Active Trader Pro® Hidden Gems



13. Use customized chart tabs to quickly navigate views on different timeframes, frequencies and indicators

Create multiple views within a single chart window. Customize each tab by choosing different timeframes, frequencies and indicators.

Add tabs by selecting (+) an empty tab, or delete tabs by clicking (x). Reorder by dragging and dropping, double click on the tab name to rename it.



14. Customized Quotes

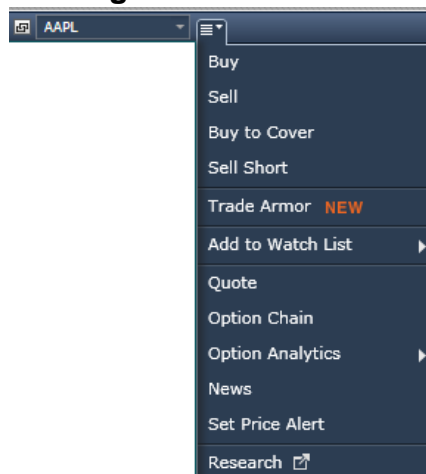
Rearrange data fields using drag-and-drop. Right-click to add or remove fields. Re-size the quote tool to your desired height and width for a one-to-multiple column view.

SPY S&P 500	
179.15 ↓	B 179.15 × 20
-0.58 (-0.32%)	A 179.16 × 602
	V 63,795,950
Open	179.41
Day Range	178.87 - 179.74
Close	179.73 (12/04/2013)
52 Wk Hi	181.75 (11/29/2013)
52 Wk Lo	139.54 (12/31/2012)
Last Trade Size	100
10-Day Vol	91,951,771
90-Day Vol	110,327,763
Last Trade Exch	NYSE ARCA
Bid Exch	NASDAQ-NMS
Ask Exch	NSX

SPY S&P 500		
179.13 ↓	B 179.12 × 129	A 179.13 × 87
-0.60 (-0.33%)		V 63,825,921
Open	179.41	Condition --
Day Range	178.87 - 179.74	P/E Ratio 64.88
Close	179.73 (12/04/2013)	EPS 2.77
52 Wk Hi	181.75 (11/29/2013)	Div/Yield 0.838 / 1.89%
52 Wk Lo	139.54 (12/31/2012)	Div Date 10/31/2013
Last Trade Size	300	Ex Div Date 09/20/2013
10-Day Vol	91,951,771	Split Factor 0.00
90-Day Vol	110,327,763	UPC Restricted --
Last Trade Exch	Third Market	Shortable Shares Show
Bid Exch	NASDAQ-NMS	S&P 500 tests recent lows, levels to watch
Ask Exch	BATS	
Block Trades	163	THEFLYONTHEWALL 11:09 AM ET

15. Quick access to tools via the Action menu and right click

Wherever there is a symbol there will be an Action menu giving you quick access to seed that symbol into another tool. Or you can use the right-click menu to trade or seed other tools.

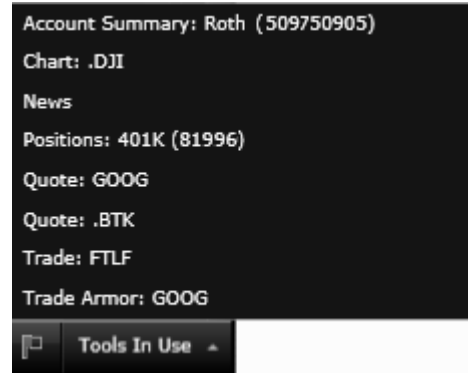


Fidelity Active Trader Pro® Hidden Gems



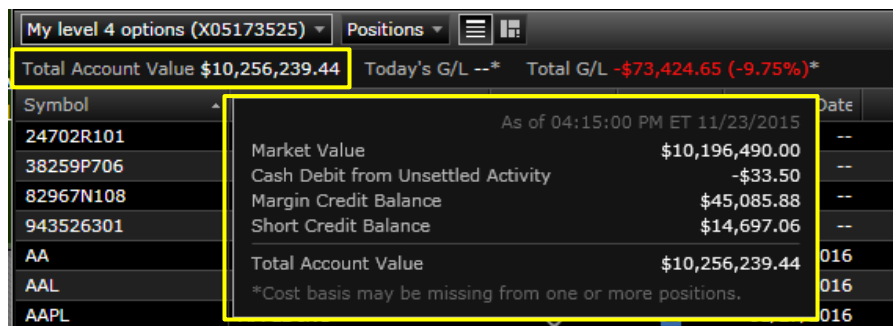
16. Quickly view, restore or close open tools

Use the Tools in Use menu located in the lower right corner of ATP to see a list of all open tools. From here you can bring a tool into view or easily close a tool by clicking on the red [x] to the right of the tool name.



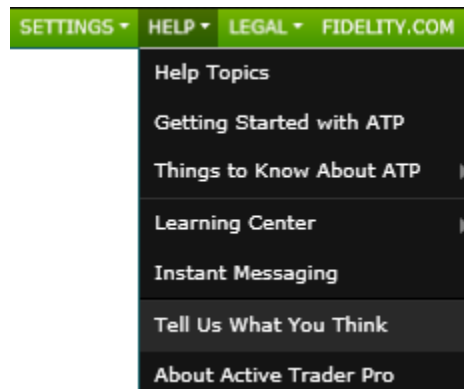
17. Total Account Value Tool tip on Positions

Hover over the Total Account Value in the Positions tool to view expanded real-time balance information including any pending debits or credits for the account.



18. Give your feedback to help us shape the future of active trading

Tell Us What You Think is a way to provide feedback about the Active Trader Pro Platforms. Also, be sure to access Things to Know About ATP in the same menu for additional tips and access to the ATP User Guide.



Fidelity Active Trader Pro® Hidden Gems



19. Create Duplicate Order

To duplicate an order you have already placed, simply right click on the order you would like to copy in the Orders tool and select Create Duplicate Order. The order details will feed into the trade ticket allowing you to quickly place the same trade.

All Accounts	Symbol	Action	Status	Order Type	Trade Description	TIF
	TSLA	CANCEL REPLACE	OPEN	Limit at	Buy 2 Limit at \$220.00	GTC
	F	CANCEL REPLACE	OP		Buy 10 Limit at \$13.00	GTC
	AAPL		FI		Buy 100 Limit at \$100.00	Day
	SPY		FI		Buy 100 Limit at \$198.50	Day

20. Create Custom Option Filters

To make your own custom option filter, select the pre-built filter drop down and choose “custom”. Once the box appears choose “create”, this will launch the custom scan builder allowing you to pick your criteria, values, and sort order. Watch the demo video on the same page to get a quick tutorial of how to build your scan.

High Option Volume	st	Chg	% Chg	Opt Vol
High Option Volume	7	-0.16	-2.07	41,298
High Call Volume	3	-0.10	-7.52	36,953
High Put Volume	1	-0.23	-5.69	35,953
High Open Interest	4	-0.65	-2.89	6,088
Exploding IV30s	9	0.4199	8.90	7,445
Imploding IV30s	6	-0.89	-1.58	25,109
Earnings	4	-0.04	-0.25	3,767
Earnings	1	-1.58	-3.11	5,313
Implied Volatility	0	-0.04	-0.25	6,987
IV vs HV	1	-0.27	-1.99	46,124
Order Flow	0	0.09	2.14	4,722
Order Flow	9	-0.145	-1.29	16,423
Time Spreads	1	-0.12	-0.45	3,986
Time Spreads	4	-1.60	-1.40	5,510
Top Options Scans	5	-0.015	-0.15	7,044
Custom	1	-0.4099	-1.36	10,601
Custom	02.005	-0.205	-0.33	4,683

NO CUSTOM SCANS
Currently no custom scans exist. Custom scans can be created on Fidelity.com

CREATE **CANCEL**