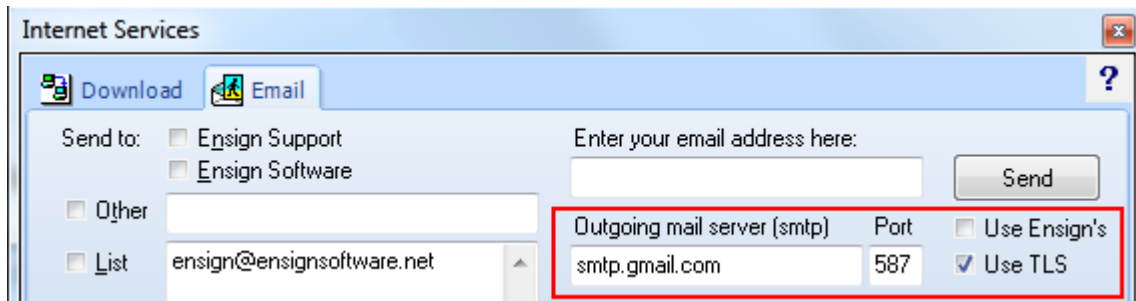
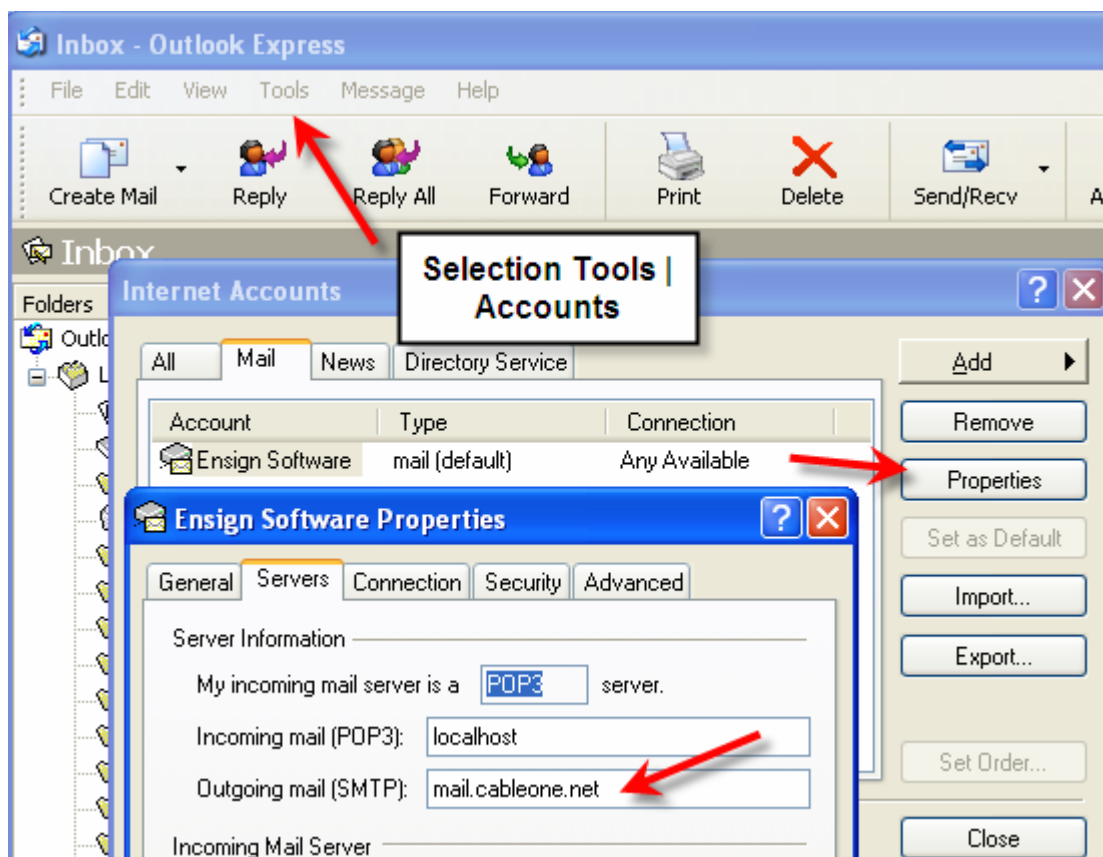


Email's Outgoing SMTP Setting

Charts can be emailed either through Ensign's server settings, or through your own email server. To use your own email server, the 'Use Ensign's' box would be unchecked on the Internet Services | Email form.



The example shows a typical SMTP setting for a gmail account with port 587 and Use TLS checked. Look in your email program to find your 'Outgoing mail (SMTP)' setting. Here is an example of finding the SMTP setting in Outlook Express.



Your setting would be different, of course. Enter the same Outgoing mail setting in the Ensign program. Click menu Setup | Internet Services. Select the Email tab and put the entry in the Outgoing mail server (smtp) edit box.