

Heavy Menstrual Bleeding Clinical Practice Guideline

Inpatient Management

FINAL:
2/3/21
Page 1 of 2

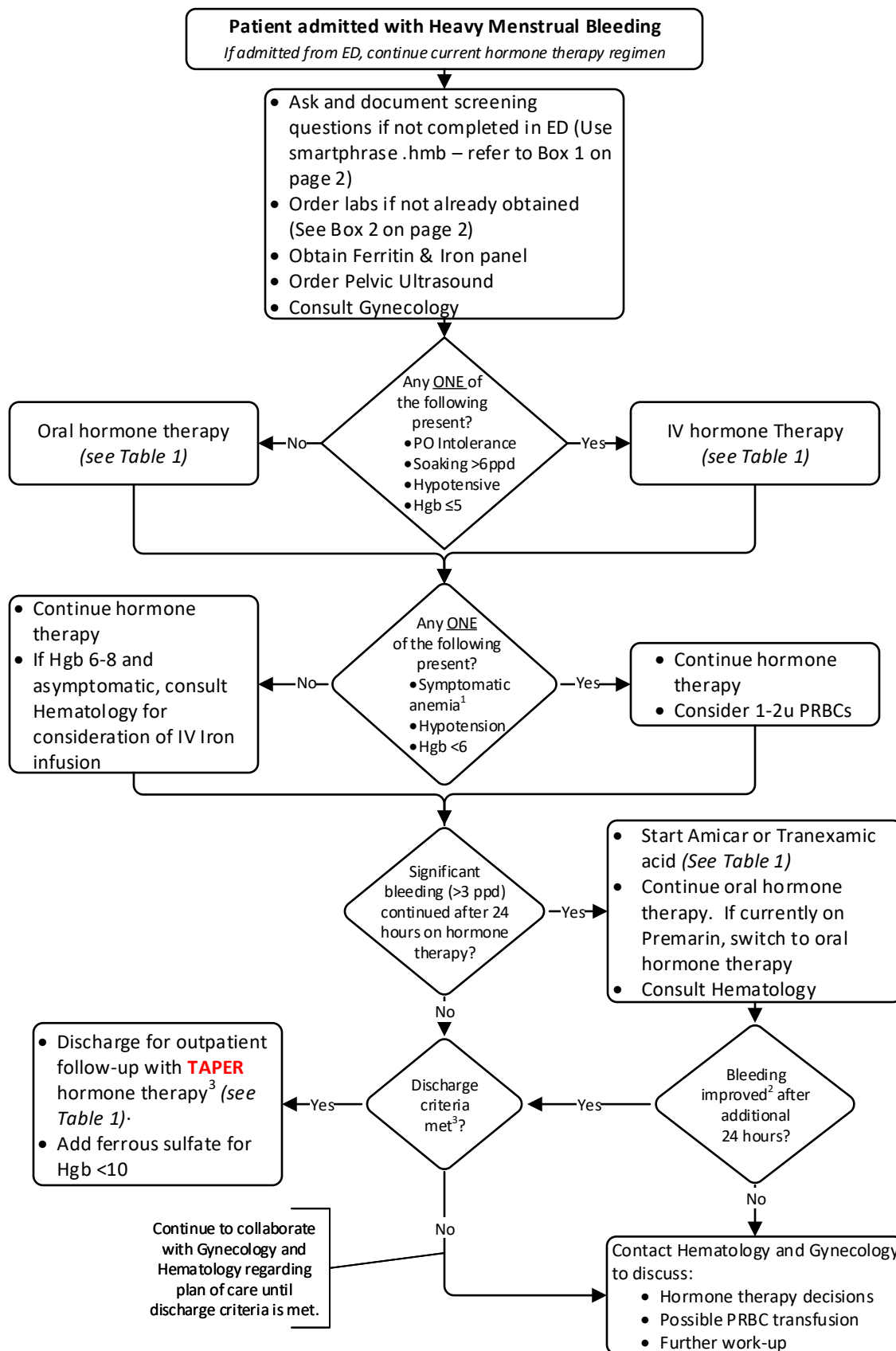


Inclusion Criteria: Menstruating females with concern for heavy bleeding

Exclusion Criteria:

- Previously identified bleeding disorder (Rheumatology, Cancer, Anti-Coagulation, Congenital Heart Disease)
- Patients with altered mental status, severe hypotension, requiring intubation, or who are otherwise clinically unstable

Algorithm



Definitions

- ppd = pads per day

Considerations

- If known history of blood thinners, consult Hematology
- Start iron when patient tolerating PO
- If unstable/hypotension, consider PICU transfer

General Care

- Monitor vitals per routine
- Obtain orthostatic blood pressure and HR on admission and Qshift
- Start IV if indicated
- Case management consult for discharge medication needs

¹ Symptoms of Anemia

- Tachycardia
- Orthostatic hypotension
- Headache/Dizziness
- Fatigue

² Bleeding Improved

- <3 ppd
- Orthostasis resolved
- Fatigue resolved
- No headache/dizziness

³ Discharge Criteria

- Tolerating PO
- In room air
- No longer bleeding or only spotting
- No longer orthostatic

⁴ Discharge Instructions

- Follow-up with Gynecologist at CHOA Pediatric Gynecology office (404.785.1491), or Hughes Spalding Adolescent Medicine Clinic (404.785.9850) in 2-4 weeks
- Follow-up with the Hematology Clinic (404.785.1319) in 4-8 weeks to complete bleeding disorder work-up
- Continue hormone taper until daily regimen achieved. If bleeding recurs, return to previous dose and call PCP. Do not take placebo pills until seen for follow-up (see Table 1).
- Physician should work with case manager when writing discharge hormone therapy orders to ensure access to the necessary quantity.
- Continue iron supplementation and encourage iron rich foods
- Keep menstrual calendar
- Provide teaching sheet: "When Your Child Has Iron-Deficiency Anemia"

Heavy Menstrual Bleeding Clinical Practice Guideline

Inpatient Management



Box 1: Screening Questions (Adapted from Claire Philipp Screening tool; AMJOG 2011)

1. On average does your period last 7 or more days?
2. Do you experience "flooding" or overflow bleeding thru your tampon or pad?
3. Do you need to change your tampon or pad more than every 1-2 hours at times during your period?
4. Have you ever been treated (PO iron, IV iron, blood transfusion) for iron deficiency anemia in the past?
5. Do you have a family history of a bleeding disorder?
6. Have you had excessive bleeding with a dental extraction or dental surgery?
7. Have you had excessive bleeding with a miscarriage or following delivery of a child?

Considered to be positive if answered yes to any of the above questions

Box 2: Labs (if not already obtained)

Obtain: Ferritin & Iron panel. CBC Q12H while bleeding (can be more frequent if heavy bleeding), then QD | Urine Pregnancy and Type & Screen

- **If Obesity (BMI ≥95%), Acanthosis Nigricans, Hirsutism, or missed period for more than 3 months in a row:**
 - Prior to starting hormone therapy, draw FSH, LH, Estradiol, Prolactin, Testosterone. Results not needed prior to starting therapy.
- **If sexually active:** Consider Urine GC/Chlamydia, Serum RPR and HIV
- **If strong personal history of bleeding or family history of bleeding disorder:** Consider VWD profile, PT, PTT, and fibrinogen

Table 1: Medications

Hormone Therapy for Admitted Patients					Discharge Hormone Therapy					
Medication	Indications	Dosage	Max Dose	Contraindications/Comments	Medication	Indications	Dosage	Max Dose	Contraindications/Comments	Prescription Notes
Preferred Oral Norethindrone Acetate	Use if ALL of the following are true: -Tolerating PO -Hemodynamically Stable -Hgb >5 -Soaking ≤6ppd	TAPER: 10 mg BID until 3 days after bleeding stops. Then, start maintenance dose. MAINTENANCE: 10 mg once a day until follow-up appointment.**	10 mg/dose	Contraindication: Previous intolerance Not a preferred method of birth control	Preferred Norethindrone Acetate	Preferred: Recommended maintenance/discharge hormone therapy if no contraindications present	TAPER: 10 mg BID until 3 days after bleeding stops. Then, start maintenance dose. MAINTENANCE: 10 mg once a day until follow-up appointment.**	10 mg/dose	Contraindication: Previous intolerance Not a preferred method of birth control	Prescribe 90 tabs for 30 days with 1 refill
Preferred IV Conjugated Estrogens (Premarin)	Use if actively bleeding and at least ONE of the following is true: -Unable to tolerate PO -Hypotensive -Hgb ≤5 -Soaking >6ppd	- 25 mg IV Q4H until bleeding stops or 6 doses have been given - Then, switch to oral hormone therapy.	25 mg/dose	Common Contraindications: Personal history of thrombosis or stroke, thrombosis in first degree relative or family history of hypercoagulability, migraine with aura, SBP >160 or DBP >100, <6 weeks post-partum, congenital heart disease, active cancer, renal failure, or uncontrolled rheumatologic disease.* Call Hematology or Gynecology if contraindications present						
Alternate Oral Lo-Ovral	Alternate if: -Norethindrone acetate is contraindicated	1 tab PO Q8H until discharge	1 tab/dose	Common Contraindications: Personal history of thrombosis or stroke, thrombosis in first degree relative or family history of hypercoagulability, migraine with aura, SBP >160 or DBP >100, <6 weeks post-partum, congenital heart disease, active cancer, renal failure, or uncontrolled rheumatologic disease.* Call Hematology or Gynecology if contraindications present	Alternate Lo-Ovral	Alternate if: - Norethindrone acetate is contraindicated	TAPER: 1 tab PO Q8H x 3 days from initiation - Then, 1 tab PO Q12H x 2 days. - Then, start maintenance dose MAINTENANCE: 1 tab PO QD until follow-up.*	1 tab/dose	Alternate for Medicaid Patients: Seasonique (uses same dosing schedule as Lo-Ovral) Common Contraindications: Personal history of thrombosis or stroke, thrombosis in first degree relative or family history of hypercoagulability, migraine with aura, SBP >160 or DBP >100, <6 weeks post-partum, congenital heart disease, active cancer, renal failure, or uncontrolled rheumatologic disease.* Call Hematology or Gynecology if contraindications present	Lo-ovral: Prescribe as a 1-month supply with 3 refills Seasonique: Prescribe one 84-pill pack with 1 refill
Alternate Oral Medroxyprogesterone	Alternate if: -Norethindrone acetate and Lo-Ovral are contraindicated	TAPER: 20 mg BID until 3 days after bleeding stops. Then, start maintenance dose. ** MAINTENANCE: 20 mg once a day until follow-up appointment.	20 mg/dose	Contraindication: Previous intolerance Not a method of birth control.	Alternate Medroxyprogesterone	Alternate if: - Lo-ovral and Norethindrone acetate are contraindicated	TAPER: 20 mg BID until 3 days after bleeding stops. Then, start maintenance dose. ** MAINTENANCE: 20 mg once a day until follow-up appointment.	20 mg/dose	Contraindication: Previous intolerance Not a preferred method of birth control	Prescribe as 90 tabs per 30 days with 1 refill
Other Inpatient Medications					Other Discharge Medications					
Medication	Indications	Dosage	Max Dose	Contraindications/Comments	Medication	Indications	Dosage	Max Dose	Contraindications	Prescription Notes
Ferrous Sulfate (Iron)	Recommended for all admitted patients	325 mg (65 mg elemental iron) PO BID		N/A	Ferrous Sulfate (Iron)	Recommended for all patients	325 mg (65 mg elemental iron) PO BID		N/A	Prescribe 60 tabs for 30 days with 1 refill
Ondansetron (Zofran) <i>As needed</i>	For side effects related to hormone therapy	0.15 mg/kg PO or IV Q8H as needed	8 mg/dose	N/A	Ondansetron (Zofran) <i>As needed</i>	If oral hormone therapy given	0.15 mg/kg PO Q8H as needed	8 mg/dose	N/A	Prescribe per patient's needs
Famotidine (Pepcid) <i>As needed</i>	For side effects related to hormone therapy	20 mg PO or IV BID	20 mg/dose	N/A	Famotidine (Pepcid) <i>As needed</i>	If oral hormone therapy given	20 mg PO BID	20 mg/dose	N/A	Prescribe per patient's needs
Docusate (Colace) <i>As needed</i>	If iron given	50-100 mg QD	100 mg/dose	N/A	Docusate (Colace) <i>As needed</i>	If iron given	50-100 mg PO QD	100 mg/dose	N/A	Prescribe per patient's needs
Antifibrinolytics (Admitted patients only)										
Medication	Indications	Dosage	Max Dose	Contraindications/Comments						
Aminocaproic acid (Amicar)	For patients soaking >3 ppd after 24 hours on hormone therapy	- 100 mg/kg IV or PO x1 loading dose, - Then 50 mg/kg IV or PO Q6H	5 g/dose	Contraindication: Hematuria <i>Consult Hematology if using Amicar or Tranexamic acid</i>						
Tranexamic acid	For patients soaking >3 ppd after 24 hours on hormone therapy	10 mg/kg IV Q8H OR 1300 mg PO TID	IV: 600 mg/dose PO: 1300 mg/dose							

*Refer to CDC Summary of Medical Eligibility Criteria for Contraceptive Use for complete list of contraindications for estrogens
**If bleeding recurs, return to previous dose and call PCP. Skip placebo pills until seen for follow-up.