

English

## QUICK START GUIDE

MOMENTO<sup>™</sup>



## Before using M6

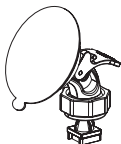
The device and the recorded videos are intended for reference and personal use only. Based on the user's setting and environment, please be informed that the device may NOT record videos of all accidents. Please frequently test the Micro SD card for errors and because it is a consumable item, it should be replaced periodically.

MOMENTO is not responsible for any data loss, and will not compensate for any loss. It is dangerous to access this device while driving.

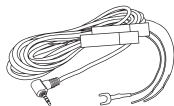
## Package Components



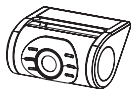
Main unit



Suction Mount



Hardwire Cable



Rear Camera



Rear Camera Cable



GPS Module

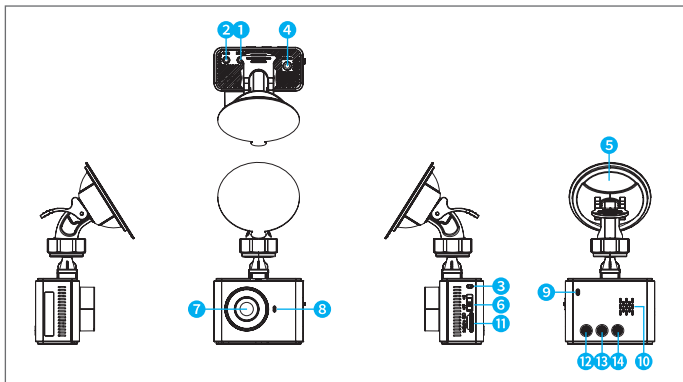


Micro SD Card



Quick Start Guide

## Product Overview



Mark	Description
① R-CAM	Rear camera port
② GPS	GPS module port
③ MIC	Microphone for voice and audio recording
④ DC-IN	Power cable port
⑤ Mount	Installation Mount
⑥ Power	Power ON/OFF switch
⑦ Camera Lens	Front camera for video recording
⑧ Front LED	Indicates parking status and provides security effect
⑨ Status LED	Notification for recording
⑩ Speaker	Voice guidance
⑪ Micro SD	Memory card slot
⑫ Wi-Fi Button	Wi-Fi ON/OFF button
⑬ Speaker / Voice Recording Button	Press more than 3 seconds : Speaker ON/OFF Press less than 3 seconds : Voice recording ON/OFF
⑭ Manual Recording Button	Manual record

## Device Installation

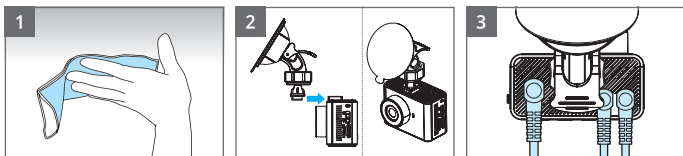
### Caution

- Make sure to install the device in a safe area and that the engine is OFF.
- Please check if the Micro SD card is inserted correctly before connecting to power.
- Make sure the installation area is clean.
- Disconnect the power cable if you are not using the device for a long period of time.
- Do not drop the product as it may not function properly.
- During extreme high temperatures or hot weathers, parking indoors is suggested.

### Caution when inserting Micro SD card

- Do not apply excessive force on the Micro SD card or insert in the wrong direction. Any actions which may cause an SD card error, will be the responsibility of the user.
- Please test the Micro SD card for errors frequently and because it is a consumable item, it should be replaced periodically.
- Make sure the device is turned off when you pull out the SD card.
- Any issues arisen by using a different Micro SD card besides MOMENTO's are the responsibilities of the user.
- Store important recordings into other devices (ex, PC).

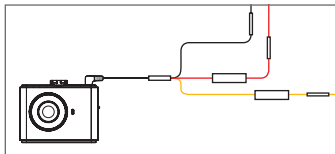
### 1. Main device installation



- (1) Select and clean the area where the product will be installed.
- (2) Connect the main device and the mount.
- (3) Connect the rear camera and GPS cables first, then connect the power cable.

**⚠ To avoid interrupted reception with other devices such as a navigation, make sure the wiring is not overlapped with enough space in between.**

## 2. Connecting Hardwire Cable



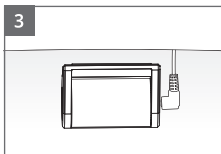
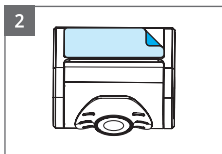
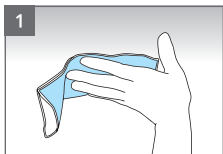
**BLACK** : GND

**YELLOW** : BAT (B+)

**RED** : ACC

⚠ Please visit a professional installer to connect hardwire cable.

## 3. Rear Camera Installation



(1) Select and clean the area where the product will be installed.

(2) Remove the double sided tape and attach the device.

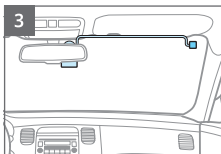
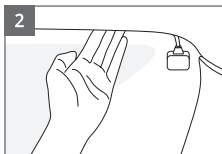
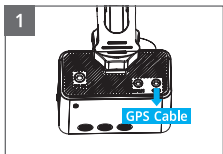
(3) Connect the rear camera and the cable.

⚠ Before installation, make sure the engine is turned off.

⚠ Make sure the installation area is cleaned.

⚠ Make sure the installation area doesn't interfere with the window's infrared rays.

## 4. External GPS Module Installation



(1) Connect the external GPS module to the right connector in the device.

(2) Organize the cable lines across the car's ceiling.

(3) Remove the double sided tape and attach the module to the car's windshield.

⚠ Before installation, make sure the engine is turned off.

⚠ Make sure the installation area is cleaned.

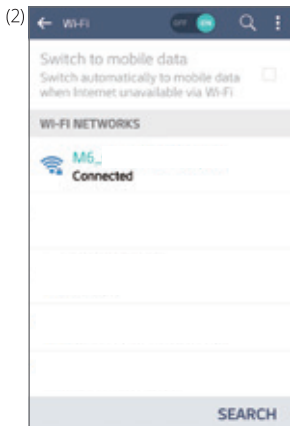
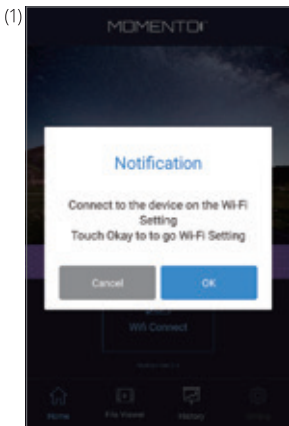
## Using Wi-Fi Application

### 1. Wi-Fi application download and installation

Search "MOMENTO M6" on the App Store (iPhone), Play Store (Android) then install.

### 2. Wi-Fi Application Registration

Press the Wi-Fi button on the M6 when it is on. Then connect to M6\_XXXXXX on the application.

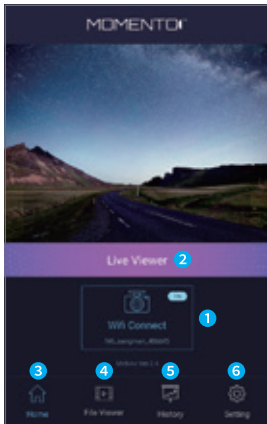


- (1) Touch "OK" on the pop-up message to go to the setting when the Wi-Fi is not connected.
- (2) Select the Wi-Fi that starts with "M6" on the Wi-Fi list then go back to the application.

**⚠** The initial Wi-Fi password is 12345678.

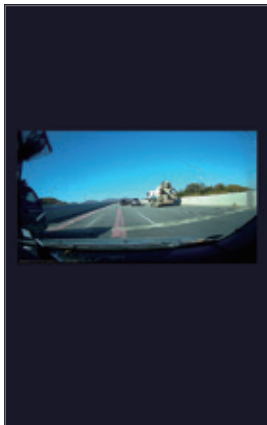
Connecting Wi-Fi is only possible when the M6 is on. If you cannot find the device on the Wi-Fi list, please refresh the list or press the Wi-Fi button on the M6.

### 3. Wi-Fi Application Start-up Screen



- |   |   |
|---|---|
| 1 | Wi-Fi status and the name of the connected Wi-Fi.                       |
| 2 | View the front / rear live stream.                                      |
| 3 | Return to the Home screen. It will continue recording if it was paused. |
| 4 | Find the recording files in different folders.                          |
| 5 | Find the trip data and travel route by dates.                           |
| 6 | Check / Change the M6 settings.   |

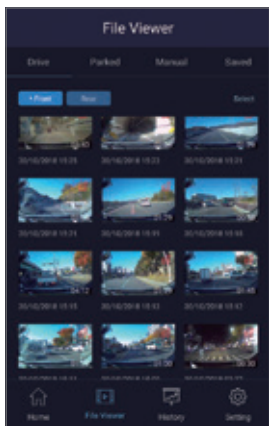
### 4. View the Live Stream (Live Viewer)



The Live Viewer can directly view at real time. Horizontal view is available with front/rear choices and reversing left/right.

## 5. View the Recordings (File Viewer)

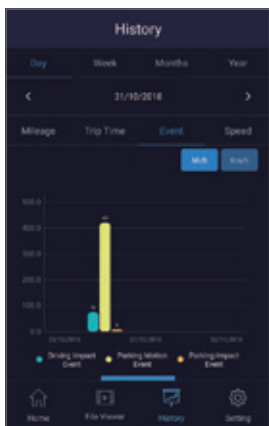
The recording files in the M6 can be viewed through the File Viewer. Each folder support the thumbnail view with front / rear options.



Each folder categories are such as followings

<b>Drive</b>	Drive recordings are saved. Max 5 minutes of recording files including impact event recordings are saved as one bundle of file.
<b>Parked</b>	Park recordings are saved. Max 30 seconds of recording files including motion / impact event recordings are saved.
<b>Manual</b>	Manual recordings are saved. Max 30 seconds of manual recordings are saved.
<b>Saved</b>	Recordings saved in the smart phone are saved.

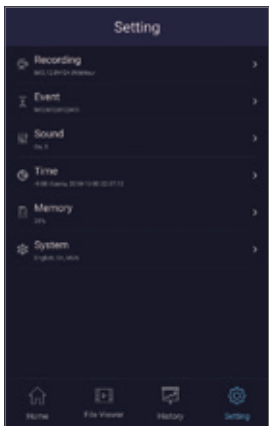
## 6. Trip data (History)



The trip data on different periods are schematized. The mileage, time, speed, the number of event recordings can be found here.



## 7. Configuration (Setting)



The M6 settings can be changed. Changing some settings will reboot the M6 system.

Each categories are such as followings

<b>Recording</b>	Settings for image quality, Power saver, parking mode time.
<b>Event</b>	Settings for impact and motion events sensitivity while parking.
<b>Sound</b>	Settings for voice recording options and speaker volume.
<b>Time</b>	Settings for standard time and the current time.
<b>Memory</b>	Settings for memory allocation / Micro SD card Format.
<b>System</b>	Settings for system / Reboot.

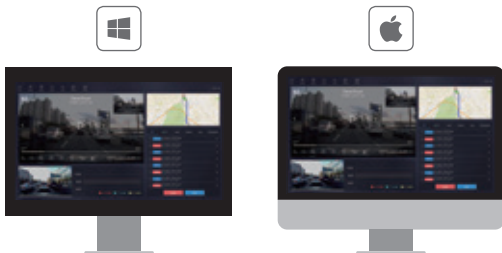
## Using PC Viewer

### 1. Download PC Viewer

Open the Internet browser then download the PC Viewer on the following link in below.  
<https://momentocam.com/resources>

### 2. PC Viewer Compatibility

The PC viewer is compatible for both Windows and Mac OS computers.



### 3. Start PC Viewer

Open the installed MOMENTO M6 Viewer on the desktop.

Before opening the viewer, make sure the Micro SD card is inserted.



## Product Spec

Item	Description
Model	MOMENTO M6
Size / Weight	59(W) x 43(H) x 29(D) / 75g
Micro SD card capacity	up to 256GB
Resolution	Front / Rear : FHD (1920 X 1080)
Front Camera	IMX 307 (1/2.8") / 145°(D) x 115°(H) x 62°(V)
Rear Camera	IMX 323 (1/2.9") / 140°(D) x 110°(H) x 60°(V)
Audio / Speaker	Embedded microphone / speaker
Frame Rate	Front / Rear : Max 30 Frame
Acceleration Sensor	3 Axis Acceleration Sensor
GPS	External GPS Port
Input Power Source	DC 12 / 24V
Auxiliary Power Unit	Super Capacitor
Operation Temperature	-10°C ~ 60°C