



# Welcome to Back-to-School Night

*Second Grade – Room 16*

*Ms. Meagan Keith*

# About Me

## About Me:

- Bachelor's and Master's of Science in Elementary Education from Old Dominion University
- Grew up an Army brat
- Recently moved to Loudoun County from Virginia Beach
- 2 Cats: Avery and "Funny Face"
- Favorite author: Roald Dahl
- Favorite subject in school: Reading
- What I want your child to know when she/he leaves my classroom: Lifelong learning is a magical and treasured experience.



# Classroom Expectations



- ➔ Be safe, be kind, be honest.
- ➔ Keep your hands and feet to yourself.
- ➔ Listen to your teacher.
- ➔ Follow directions quickly.
- ➔ Raise your hand to speak or stand.

# Behavior Management

- A clip chart will be used in our classroom to monitor daily behavior.
- Students will begin their day at green on “Ready to Learn” and move their clothespin up or down during the day depending on their choices.
- At the end of every day students will log where on the clip chart they ended by coloring a star in their agendas.
- Parents are required to initial their child’s agenda to verify that they have seen their child’s behavior star.
- Students who end their day *below* green will have a teacher written code next to their colored star informing the parent(s) of their child’s behavior choices.

*More information about the clip chart can be found in your “Back to School Night” folder.*





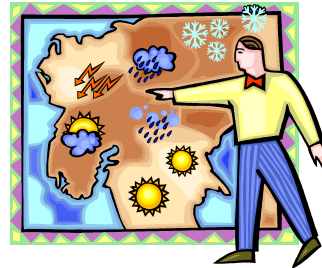
# Math Curriculum



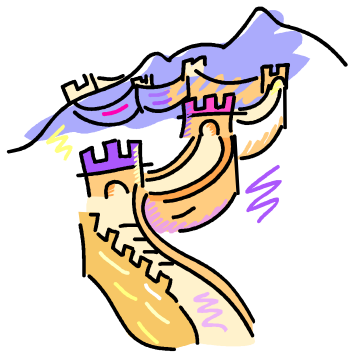
- ⇒ Measurement
- ⇒ Number Concepts
- ⇒ Graphing
- ⇒ Problem Solving
- ⇒ Addition/Subtraction
- ⇒ Money
- ⇒ Geometry

# Hands-On Science Curriculum

- ⇒ Living Systems
- ⇒ Life Processes
- ⇒ Matter
- ⇒ Force, Motion, and Energy
- ⇒ Weather
- ⇒ Earth Patterns, Cycles, and Changes
- ⇒ Natural Resources



# Social Studies Curriculum



- ➔ Maps and Globes
- ➔ Famous Americans
- ➔ American Indians
- ➔ Economics
- ➔ Jamestown
- ➔ China
- ➔ Egypt
- ➔ Mexico
- ➔ Canada

# Language Arts Curriculum

## Pathways

### Balanced Literacy Program:

- ➔ Independent Reading
- ➔ Read-Aloud
- ➔ Shared Reading
- ➔ Guided Reading
- ➔ Writer's Workshop
- ➔ Word Study





# Word Study

- ➔ Students are placed in flexible groups based on skills needed.
- ➔ Students will receive words on Monday and will be assessed on Friday.
- ➔ Students will be required to complete nightly word study activities at home.



# Homework



- ➔ Homework is important. It is an extension of the learning process that takes place in school.
- ➔ As an LCPS guideline, children in the primary grades should be required to spend approximately (30) minutes daily doing homework.



# Homework Cont.


- ➔ Monday through Thursday, students will be responsible for completing a Word Study activity each night.
- ➔ In addition to this, students are required to read for 15 minutes.





# Homework

Monday	Tuesday	Wednesday	Thursday	Friday
Word Study: Sort, read, write	Word Study: Word Hunt	Word Study: Free Choice	Word Study: Practice word study test	No Word Study
Read:15 minutes	Read:15 minutes	Read: 15 minutes	Read: 15 minutes	Read: 20 minutes



# Why can't I skip my 15 minutes of reading?

- ➔ Student 'A' reads 15 minutes five nights of every week.
- ➔ Student 'B' reads 5 minutes a night...or not at all!
- ➔ Minutes a night x 5 times a week
  - Student 'A' reads 75 minutes a week; Student 'B' reads 25 minutes a week.
- ➔ Minutes a week x 4 weeks in a month
  - Student 'A' reads 300 minutes a month; Student 'B' reads 100 minutes a month.
- ➔ Minutes a month x 9 months (school year)
  - Student 'A' reads 2,700 minutes in a school year; Student 'B' reads 900 minutes a school year.
- ➔ Student 'A' practices the equivalent of **7** whole school days a year. Student 'B' practices the equivalent of **2** school days.



# C.L.A.R.I.T.Y

**C** – Curriculum

**L** – Lesson Plans

**A** – Assessments and

**R** – Reports for

**I** – Instructors

**T** – Teaching

**Y** - Youth



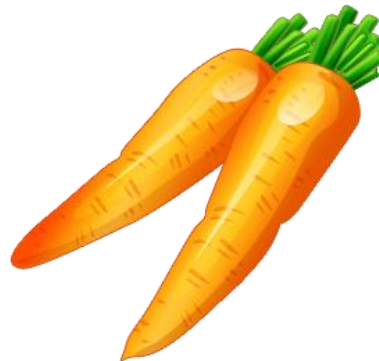
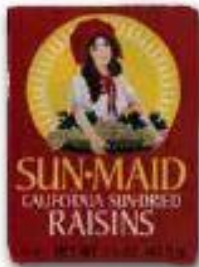
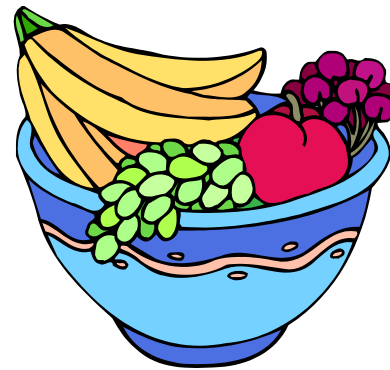
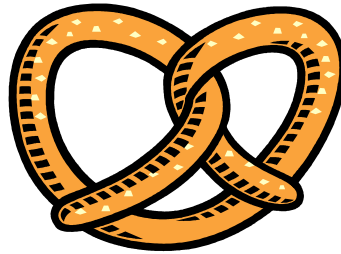


# Student Birthdays



- ➔ **Students may only bring invitations to school for distribution if ALL students in the classroom are invited.**
- ➔ Per LCPS guidelines, food treats will not be shared for classroom birthday celebrations.
- ➔ Some suggestions for your child's birthday treats:
  - Donate a book to the school's Birthday Club
  - Fun pencils or stickers
  - Recess equipment
  - A board or card game for the class to share

# Eating and Snacking in Class







# Cafeteria

- ➔ Family members are welcome to join their children for lunch for special occasions, but must make a “reservation” 48 hours in advance with Luanne Nichols by email ([Luanne.Nichols@lcps.org](mailto:Luanne.Nichols@lcps.org)).
  - Due to limited space, your child may not bring any buddies or siblings from another grade to eat with him/her.
- ➔ You can pay for your child’s lunch online at [www.pay4lunch.com](http://www.pay4lunch.com) or write a check out to the “County of Loudoun”.

# Dismissal Procedures



- Please send in a note that explains any changes in dismissal from school. **No email changes.**
- Changes to dismissal procedures can be assured if received before 12 noon.
- Changes received by phone after 12 noon will not be accommodated unless it is an emergency.
- Students will not be dismissed during the last 30 minutes of the day unless arrangements have been made before 12 noon.
- Due to the large size of NLE's student population, your child is permitted to bring only 1 friend on the bus with him/her.



# We Need Your Help!



- ➔ Parents (and grandparents) are encouraged to volunteer in their child's classroom.
- ➔ All volunteers must attend Volunteer Training on Sept. 10 prior to volunteering in their child's classroom.
- ➔ Please be sure to sign up for volunteer opportunities before you leave.



# Communication

- ➔ Take-Home Folder
- ➔ Agenda
- ➔ [Class Webpage](#)
- ➔ Thursday Folder
- ➔ E-mail



# Before You Leave...

- Complete Parent Communication Form on class webpage\*
- Sign-up for conferences\*
  - Don't forget to fill out the reminder sheet next to the form
- Register for Newton-Lee 2012-2013 Parent Email Form\*
- Sign-up to volunteer in our class
- Check out our wishing tree
  - Please take an apple if you can

# School Supply List

- 1 box 24 ct. Crayola crayons
- 1 pr. Fiskars scissors – 5” blunt tip
- 1 box thick Crayola washable markers, 8 ct.
- 2 boxes Ticonderoga #2 pencils, sharpened
- 24 Elmer’s glue sticks, .21 oz.
- 4 composition books (green, purple, red, black)
- 3 – 2 pocket folders w/brads (red, yellow, blue)
- 1 yellow highlighter
- 1 box Crayola Twistable colored pencils, 12 ct.
- 1 green plastic 2-pocket folder w/brads
- 5 – Expo dry erase markers, black
- Stick-on Notes – 3 x 3, 4 pk.
- 1 box tissues
- 2 lg. pink erasers

