

# WF-7710/WF-7720 Series Start Here

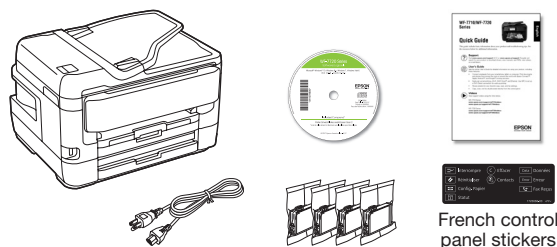
## Read these instructions before using your product.

The illustrations show the WF-7720, but the steps are the same for all models, unless otherwise specified.

### Note for Spanish speakers/Nota para hispanohablantes:

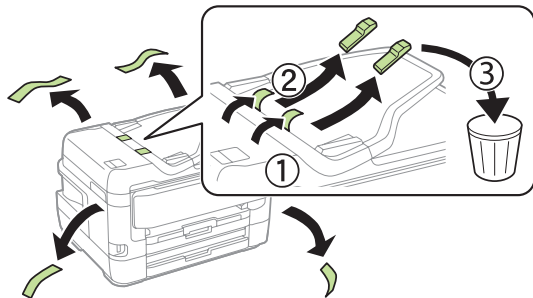
Para obtener instrucciones de configuración en español, consulte la Guía de instalación en [www.epson.com/support/wf7710sp](http://www.epson.com/support/wf7710sp) o [www.epson.com/support/wf7720sp](http://www.epson.com/support/wf7720sp) (requiere una conexión a Internet).

## 1 Unpack

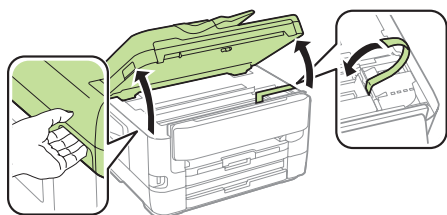


**Note:** Do not open the ink cartridge packages until you are ready to install the ink. Cartridges are vacuum packed to maintain reliability.

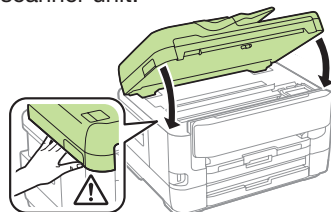
- 1 Remove all protective materials from the product.



- 2 Lift up the scanner unit and remove all protective materials from inside the product.



- 3 Lower the scanner unit.



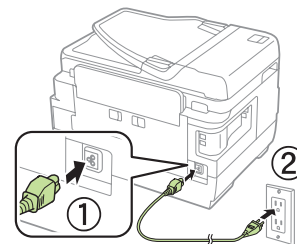
\*413469500\*

**EPSON**  
EXCEED YOUR VISION

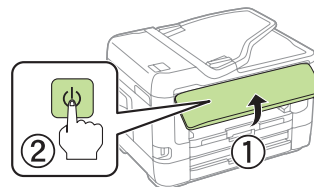
## 2 Turn on and configure

- 1 Connect the power cord to the back of the product and to an electrical outlet.

**Caution:** Do not connect to your computer yet.



- 2 Raise the control panel and turn on the product.



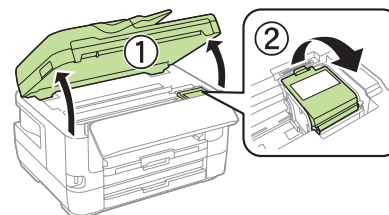
- 3 Select your language, country, and time.

**Note:** You can change these settings later using the product's control panel. For more information, see the online *User's Guide*.

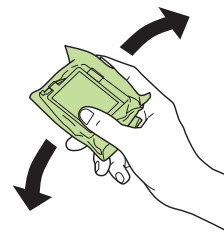
## 3 Install ink cartridges

**Caution:** Keep the ink cartridges out the reach of children and do not drink the ink.

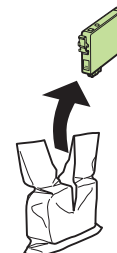
- 1 Lift up the scanner unit and open the ink cartridge cover.



- 2 Gently shake the ink cartridges.



- 3 Unpack the ink cartridges.

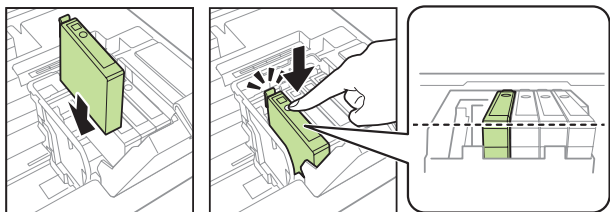


- 4** Remove only the yellow tape from each ink cartridge.

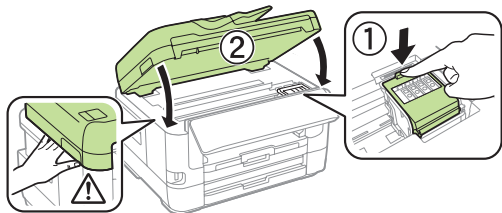


**Caution:** Do not remove any other labels or seals, or ink will leak. Do not touch the green chip on the cartridge.

- 5** Insert the cartridge in the holder for each color. Press each cartridge down until it clicks. Make sure all cartridges are pushed down into place.



- 6** Close the ink cartridge cover and lower the scanner unit.



- 7** The printer starts charging the ink. Ink charging takes approximately 6 minutes. When you see a completion message on the printer's LCD screen, charging is complete.

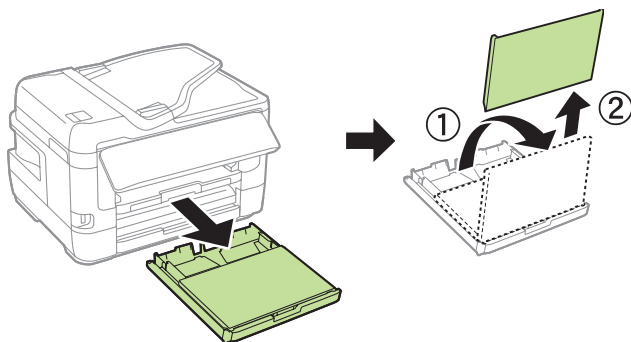
**Caution:** Don't turn off the printer or raise the scanner unit while the printer is charging or you'll waste ink.

**Note:**

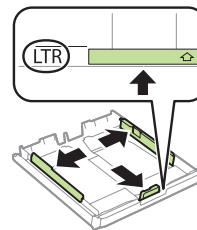
- The printer is designed for use with Epson® cartridges only, not third-party cartridges or ink.
- The cartridges included with the printer are designed for printer setup and not for resale. After some ink is used for charging, the rest is available for printing.

## 4 Load paper

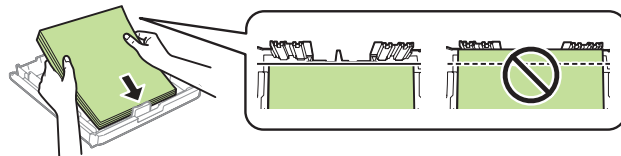
- 1** Make sure the product is done charging the ink, and then pull out the paper cassette and remove the paper cassette cover.



- 2** Slide the side edge guides all the way out and set the front edge guide to the paper size you are using.

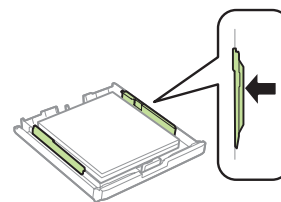


- 3** Insert paper with the glossy or printable side down.

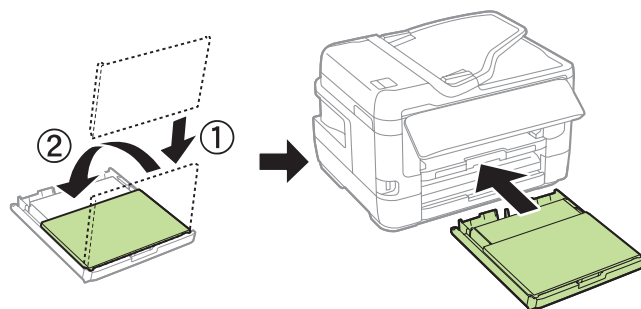


**Note:** Make sure the paper is loaded against the front edge guide and not sticking out from the end of the cassette.

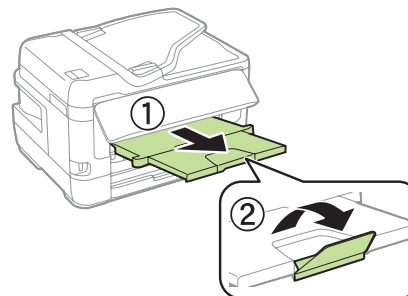
- 4** Slide the edge guides against the paper, but not too tightly.



- 5** Reattach the paper cassette cover and keep the cassette flat as you insert it all the way.



- 6** Pull out the output tray extension.



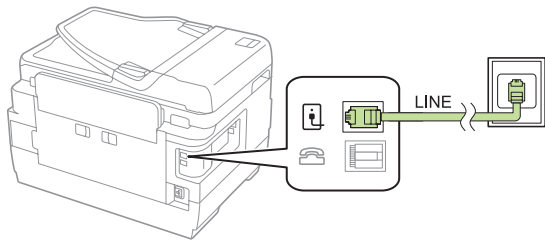
- 7** Select the paper settings on the product's control panel.

For instructions on loading envelopes, legal-size paper, or using the rear paper feed slot, see the online *User's Guide*.



## 5 Connect the fax line

- 1 Connect a phone cord to a telephone wall jack and to the **LINE** port on your product. See the online *User's Guide* for more information.



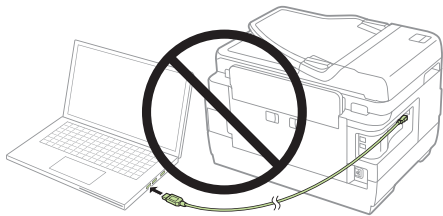
- 2 If prompted, press **Proceed** to set up the fax, or press **Close** to set it up later.

## 6 Install software

**Note:** If your computer does not have a CD/DVD drive or you are using a Mac, an Internet connection is required to obtain the product software.

To print from a Chromebook™, go to [www.epson.com/support/gcp](http://www.epson.com/support/gcp) (U.S.) or [www.epson.ca/support/gcp](http://www.epson.ca/support/gcp) (Canada) for instructions.

- 1 Make sure the product is **NOT CONNECTED** to your computer.



**Windows®:** If you see a Found New Hardware screen, click **Cancel** and disconnect the USB cable.

- 2 Insert the product CD or download and run your product's software package:

### WF-7710

[www.epson.com/support/wf7710](http://www.epson.com/support/wf7710) (U.S.)

[www.epson.ca/support/wf7710](http://www.epson.ca/support/wf7710) (Canada)

### WF-7720

[www.epson.com/support/wf7720](http://www.epson.com/support/wf7720) (U.S.)

[www.epson.ca/support/wf7720](http://www.epson.ca/support/wf7720) (Canada)

- 3 Follow the instructions on the computer screen to run the setup program.

- 4 When you see the Select Your Connection screen, select one of the following and follow the on-screen instructions:

- **Wireless connection**  
In most cases, the software installer automatically attempts to set up your wireless connection. If setup is unsuccessful, you may need to enter your network name (SSID) and password.
- **Direct USB connection**  
Make sure you have a USB cable (not included).
- **Wired network connection**  
Make sure you have an Ethernet cable (not included).

## Mobile printing

Connect wirelessly from your smartphone, tablet, or computer. Print documents and photos from across the room or around the world:

- Print directly from your iOS device. Simply connect your printer and device to the same network and tap the action icon to select the print option.
- Use Epson Print Enabler (free from Google Play™) with Android™ devices (v4.4 or later). Then connect your printer and device to the same network and tap the menu icon to select the print option.
- Print remotely with Epson Connect™ and Google Cloud Print™. See your online *User's Guide* for instructions or learn more at [www.epson.com/connect](http://www.epson.com/connect) (U.S.) or [www.epson.ca/connect](http://www.epson.ca/connect) (Canada).

## Any problems?

### Network setup was unsuccessful.

- Make sure you select the right network name (SSID).
- Restart your router (turn it off and then on), then try to connect to it again.
- The printer can only connect to a network that supports 2.4 GHz connections. If your router offers both 2.4 GHz and 5 GHz connections, make sure 2.4 GHz is enabled.
- If you see a firewall alert message, click **Unblock** or **Allow** to let setup continue.
- If your network has security enabled, make sure you enter your network password (WEP key or WPA passphrase) correctly. Be sure to enter your password in the correct case.

### There are lines or incorrect colors in my printouts.

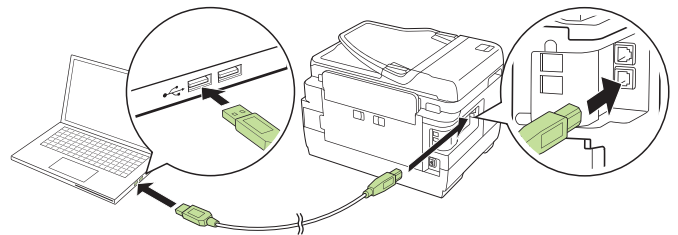
Run a nozzle check to see if there are any gaps in the printout. Then clean the print head, if necessary. See the online *User's Guide* for more information.

### The product's screen is dark.

Make sure your product is turned on, and touch the screen or press any button to wake it from sleep mode.

### Setup is unable to find my printer after connecting it with a USB cable.

Make sure your product is securely connected as shown:



# Any questions?

## Quick Guide

Basic information and troubleshooting.

## User's Guide

**Windows:** Click the icon on your desktop or Apps screen to access the online *User's Guide*.

**Mac:** Click the icon in **Applications/Epson Software/Guide** to access the online *User's Guide*.

If you don't have a User's Guide icon, go to the Epson website, as described below.

## Support

Visit [www.epson.com/support](http://www.epson.com/support) (U.S.) or [www.epson.ca/support](http://www.epson.ca/support) (Canada) and search for your product to download drivers, view manuals, get FAQs, or contact Epson.

Call (562) 276-4382 (U.S.) or (905) 709-3839 (Canada), 6 AM to 8 PM, Pacific Time, Monday through Friday, and 7 AM to 4 PM, Pacific Time, Saturday. Days and hours of support are subject to change without notice. Toll or long distance charges may apply.

## Recycling

Epson offers a recycling program for end of life hardware and ink cartridges. Please go to [www.epson.com/recycle](http://www.epson.com/recycle) (U.S.) or [www.epson.ca/recycle](http://www.epson.ca/recycle) (Canada) for information on how to return your products for proper disposal.

# Need paper and ink?

Ensure peak performance and brilliant results with Genuine Epson Ink and specialty papers, engineered specifically for Epson printers. Find Genuine Epson Ink and specialty papers at [www.epson.com](http://www.epson.com) (U.S. sales) or [www.epson.ca](http://www.epson.ca) (Canadian sales) and at Epson authorized resellers. Call 800-GO-EPSON (800-463-7766).



DESIGNED *for* EXCELLENCE™  
Epson printers, ink and specialty papers.



DURABrite Ultra INK

### WF-7710/WF-7720 replacement ink cartridges

Color	Standard-capacity	High-capacity	Extra High-capacity
Black	252	252XL	254XL
Cyan	252	252XL	—
Magenta	252	252XL	—
Yellow	252	252XL	—



EPSON and DURABrite are registered trademarks, Epson Connect is a trademark, and EPSON Exceed Your Vision is a registered logomark of Seiko Epson Corporation.

Designed for Excellence is a trademark of Epson America, Inc.

Mac is a trademark of Apple Inc., registered in the U.S. and other countries.

Android, Google Cloud Print, Chromebook, and Google Play are trademarks of Google Inc.

General Notice: Other product names used herein are for identification purposes only and may be trademarks of their respective owners. Epson disclaims any and all rights in those marks.

This information is subject to change without notice.