

SHELBY COUNTY PUBLIC SCHOOLS SUMMER ENRICHMENT 2022



INSPIRED LEARNING, LEADING, LIVING

SHELBY COUNTY PUBLIC SCHOOLS SUMMER ENRICHMENT 2022



SHELBY COUNTY PUBLIC SCHOOLS IS EXCITED TO OFFER SUMMER ENRICHMENT OPPORTUNITIES FOR CURRENTLY ENROLLED SCPS STUDENTS! OUR TEACHERS, STUDENTS AND STAFF HAVE PLANNED VARIED OFFERINGS THROUGHOUT THE SUMMER MONTHS TO ENRICH STUDENTS LEARNING, LEADING AND LIVING.

ALL SESSIONS ARE FREE TO CURRENT SCPS STUDENTS.

HOW TO ENROLL FOR #1L3

1. FIND AN EXPEDITION THAT YOU LOVE!
2. CHECK THE DATES AND GRADE RANGE.
3. CLICK ON THE LINK AND COMPLETE THE GOOGLE FORM TO REGISTER FOR YOUR SELECTED EXPEDITION.
4. THE TEACHERS LEADING EACH EXPEDITION WILL CONTACT YOU VIA EMAIL WITH FURTHER INFORMATION.
5. HAVE FUN AND ENJOY THE ADVENTURES!

INSPIRED LEARNING, LEADING, LIVING

SHELBY COUNTY PUBLIC
SCHOOLS SUMMER ENRICHMENT
2022

MINDSET DEVELOPMENT CAMP



INSTRUCTOR: BRITTANY AKIN

DATES/TIMES: BOTH SESSIONS WILL BE HELD 10AM-NOON

- **SESSION 1: TUESDAYS/THURSDAYS JUNE 7-9-14-16-21-23**
- **SESSION 2: TUESDAYS/THURSDAYS JULY 12-14-19-21-26-28**

AVAILABILITY: 20 STUDENTS MAX

GRADES: RISING 3RD-5TH

LOCATION: PAINTED STONE ELEMENTARY

MINDSET DEVELOPMENT CAMP IS DESIGNED AROUND HANDS-ON ACTIVITIES, STEM CHALLENGES AND OUTDOOR GAMES – THAT GIVE KIDS AN OPPORTUNITY TO PRACTICE AND APPLY A WIDE VARIETY OF SOCIAL-EMOTIONAL AND MINDSET SKILLS! SPECIFIC CAMP SKILL FOCUSES INCLUDE: PERSONAL STRENGTH DISCOVERY, GROWTH MINDSET AND PERSEVERANCE, SELF-CONTROL AND MINDFULNESS, EMOTIONAL REGULATION, TEAMWORK AND PROBLEM SOLVING!

contact brittany.akin@shelby.kyschools.us

[CLICK HERE TO REGISTER!](#)



SHELBY COUNTY PUBLIC
SCHOOLS SUMMER ENRICHMENT

2022

LET'S START SEWING!!



#IL3

INSPIRED LEARNING, LEADING,
LIVING



INSTRUCTORS: LESLIE HULSEY & ROSEMARY NEWKIRK

DATES: JULY 11-15

TIME: 8:30-12:30

AVAILABILITY: 20 STUDENTS MAX

GRADES: RISING 7TH-12TH

LOCATION: COLLINS HIGH SCHOOL ROOM 235

DOES LEARNING HOW TO FIGURE OUT HOW A SEWING MACHINE WORKS AND LEARNING HOW TO CREATE SOMETHING USING A PATTERN SOUND LIKE FUN TO YOU? IF SO, THEN THIS IS THE DAY CAMP FOR YOU! IN THIS 5 DAY CAMP, SEWERS WILL LEARN HOW TO SET UP A SEWING MACHINE, BASIC SEWING MACHINE AND HAND STITCHES, LEARN HOW TO READ A SEWING PATTERN, AND WILL CREATE THEIR VERY OWN PAIR OF PAJAMA SHORTS. SEWERS WILL LEAVE EQUIPPED WITH ALL OF THE BASIC SKILLS THAT THEY WILL NEED TO CONTINUE TO SEW WITH CONFIDENCE.

THIS DAY CAMP IS OFFERED TO STUDENTS GRADES 7-12 AND NO PRIOR SEWING EXPERIENCE IS REQUIRED.

contact leslie.hulsey@shelby.kyschools.us
rosemary.newkirk@shelby.kyschools.us

[CLICK HERE TO REGISTER!](#)



SHELBY COUNTY PUBLIC
SCHOOLS SUMMER ENRICHMENT
2022

PUZZLES, GAMES, BREAKOUTS & MORE!



INSTRUCTOR: KAREN MCPHERSON

DATES/TIMES: BOTH SESSIONS WILL BE HELD 9-NOON

- **SESSION 1: JUNE 6-9 AT CLEAR CREEK ELEMENTARY**
- **SESSION 2: JULY 11-13 AT MCM LIBRARY**

AVAILABILITY: 20 STUDENTS PER SESSION

GRADES: RISING 1ST-5TH

**DO YOU LIKE TO PLAY GAMES, WORK PUZZLES AND SOLVE MYSTERIES?
THEN COME JOIN US! WE WILL BE PLAYING COOPERATIVE INTERACTIVE
GAMES, WORKING PUZZLES AND MUCH MORE! WE WILL LEARN STRATEGIES TO
INCREASE CRITICAL THINKING SKILLS, ENHANCE PROBLEM SOLVING SKILLS
THROUGH PLAYING BOARD GAMES, CARD GAMES AND INTERACTIVE TEAM
BUILDING GAMES. WE WILL EVEN HAVE A DAY WHERE WE WILL WORK
TOGETHER AS A TEAM TO SOLVE PUZZLES, GO ON A SCAVENGER HUNT AND
BREAKOUT OF THE LIBRARY!**

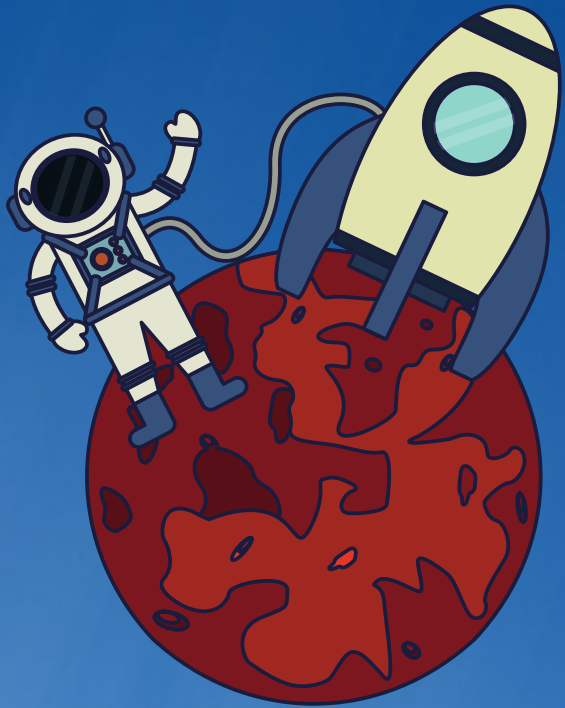
contact karen.mcpherson@shelby.kyschools.us

[CLICK HERE TO REGISTER!](#)



SHELBY COUNTY PUBLIC
SCHOOLS SUMMER ENRICHMENT
2022

EXPEDITION



MARS!!

INSTRUCTOR: KAREN MCPHERSON

DATE/TIME: JUNE 17TH FROM 8 AM TO 4 PM

AVAILABILITY: 30 STUDENTS MAX

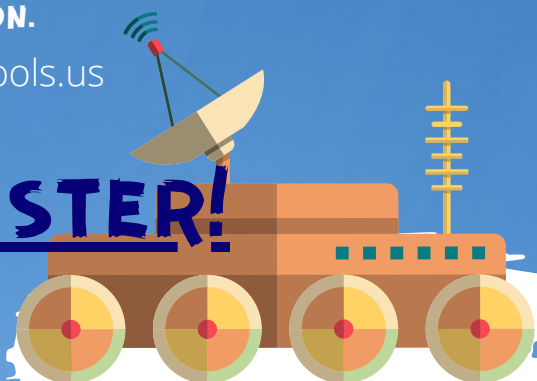
GRADES: RISING 5TH-8TH

LOCATION: MEET AT MCMS AT 8 AM TO TRAVEL TO
CHALLENGER LEARNING CENTER/LOUISVILLE SCIENCE
CENTER

COME JOIN US FOR A MISSION TO MARS AT THE CHALLENGER LEARNING CENTER WHERE SIMULATIONS PUT SCIENCE AND COMMUNICATION SKILLS TO THE TEST. YOUR MISSION: LAND ON THE MARTIAN SURFACE TO SEEK OUT EVIDENCE OF LIFE AND WATER. WORKING CLOSELY AS A TEAM, YOU WILL REPROGRAM COMMUNICATIONS SATELLITES, CALCULATE AND PLOT A COURSE TO MARS, TEST SOIL, AND EXAMINE MARTIAN ROCKS USING ROBOTIC ARMS, MONITOR THE HEALTH OF THE CREW, LOCATE MISSING SATELLITES, AND CHECK RADIATION LEVELS. THIS WILL BE AN ALL DAY TRIP TO THE CHALLENGER LEARNING CENTER IN THE MORNING AND A VISIT TO THE LOUISVILLE SCIENCE CENTER IN THE AFTERNOON.

contact karen.mcpherson@shelby.kyschools.us

[CLICK HERE TO REGISTER!](#)



SHELBY COUNTY PUBLIC
SCHOOLS SUMMER ENRICHMENT
2022

EXPLORING LATIN AMERICAN CULTURE



**INSTRUCTORS: HANNAH SPARKS, MELISSA FELICE &
SAMANTHA PEREZ**

DATE/TIME: JUNE 6TH-9TH FROM 9-12:30

AVAILABILITY: 40 STUDENTS MAX

GRADES: RISING 1ST-3RD

LOCATION: COLLINS HIGH SCHOOL ROOM 202-203-204

**EXPLORE LATIN AMERICAN CULTURE WITH US! EACH
DAY WE WILL "TRAVEL TO" A NEW LATIN AMERICAN
COUNTRY FOR STORYTELLING, ARTS & CRAFTS,
SONGS, AND FOOD!**

contact hannah.sparks@shelby.kyschools.us

[CLICK HERE TO REGISTER!](#)



SHELBY COUNTY PUBLIC
SCHOOLS SUMMER ENRICHMENT
2022

ANIMAL TALES!!

ANIMAL SCIENCE



INSTRUCTOR: KAREN MCPHERSON

DATE/TIME: FRIDAY, JUNE 10TH

- SEE REGISTRATION LINKS FOR SPECIFIC TIMES THROUGHOUT THE DAY

AVAILABILITY: 50 PER SESSION

GRADES: RISING K-8

LOCATION: MCMS EXHIBITION SPACE

SO MANY DIFFERENT ANIMAL TYPES! COME CHECK OUT THE ANIMAL SCIENCE PROGRAM WITH ANIMALS THAT FEATURES A LIVE BIRD, MAMMAL, REPTILE, AMPHIBIAN AND INVERTEBRATE FROM ALL OVER THE WORLD. STUDENTS WILL MEET AND LEARN ALL ABOUT THE ANIMAL CLASSIFICATIONS.

contact karen.mcpherson@shelby.kyschools.us



[CLICK HERE TO REGISTER!](#)



SHELBY COUNTY PUBLIC
SCHOOLS SUMMER ENRICHMENT
2022

INTRODUCTION TO CLAY



INSTRUCTOR: MELISSA MOLOHON

DATES/TIME: ALL SESSIONS FROM 8-NOON

- **SESSION 1: JUNE 6-9 FOR RISING 3RD-5TH GRADES**
- **SESSION 2: JUNE 13-16 FOR RISING 6TH-8TH**

AVAILABILITY: 20 PER SESSION

LOCATION: MCMS ART ROOM

THIS IS AN INTRODUCTORY CLASS TO BASIC CLAY TECHNIQUES. STUDENTS WILL LEARN HOW TO KNEAD CLAY, ATTACH CLAY, BUILD WITH CLAY, FIRE CLAY IN A KILN AND GLAZE (PAINT FIRED CLAY). AT THE END OF THE CLASS EACH STUDENT WILL HAVE A FINISHED PRODUCT THAT HAS BEEN FIRED IN THE KILN AND GLAZED.

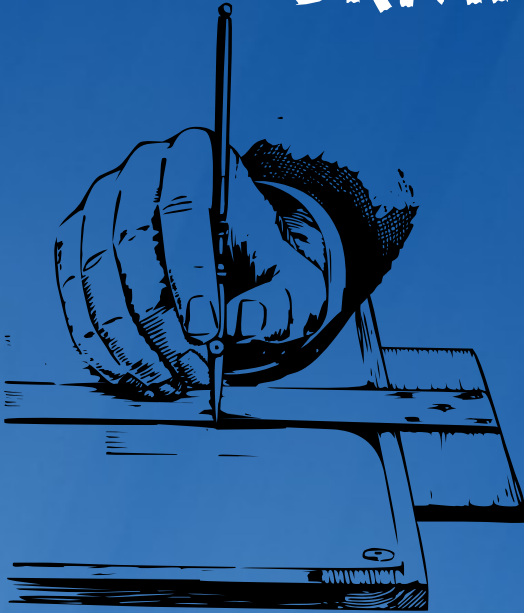
contact melissa.molohon@shelby.kyschools.us

[CLICK HERE TO REGISTER!](#)



SHELBY COUNTY PUBLIC
SCHOOLS SUMMER ENRICHMENT
2022

INTRODUCTION TO DRAWING



INSTRUCTOR: MELISSA MOLOHON

DATES/TIME: JUNE 20-23 FROM 8-12

AVAILABILITY: 20 MAX

GRADES: RISING 4TH-8TH

LOCATION: MCMS ART ROOM

STUDENTS WILL LEARN BASIC DRAWING CONCEPTS. I WILL INCORPORATE THE ELEMENTS OF ART; LINE, SHAPE, VALUE AND FORM. STUDENTS WILL LEARN TO DRAW FROM A STILL LIFE SETTING, WHICH WILL HELP BUILD THEIR DRAWING SKILLS, COMPOSITION AND PROPORTION. LASTLY, WE WILL INCORPORATE VALUE.

contact melissa.molohon@shelby.kyschools.us

[CLICK HERE TO REGISTER!](#)



SHELBY COUNTY PUBLIC
SCHOOLS SUMMER ENRICHMENT
2022

DISCOVER KENTUCKY



INSTRUCTORS: EMILY ROYSE & TRACI SLAYTON

DATES/TIMES:

- JUNE 17-KY HORSE PARK FROM 9-4
- JUNE 23-FRAZIER MUSEUM & LOUISVILLE SLUGGER MUSEUM

AVAILABILITY: 40 MAX

GRADES: RISING 3RD-5TH

LOCATION: BUS WILL DEPART FROM
SIMPSONVILLE ELEMENTARY

COME EXPLORE YOUR STATE WITH US! STUDENTS WILL BE TRAVELING OUR BEAUTIFUL STATE TO DISCOVER KENTUCKY'S HISTORY, WILDLIFE, ART AND MUCH, MUCH MORE. DISCOVER KENTUCKY INCLUDES THE FOLLOWING ONE DAY FIELD TRIPS:

ADVENTURES INCLUDE KENTUCKY HORSE PARK, FRAZIER HISTORY MUSEUM & LOUISVILLE SLUGGER MUSEUM,

contact emily.royse@shelby.kyschools.us

[CLICK HERE TO REGISTER!](#)



SHELBY COUNTY PUBLIC
SCHOOLS SUMMER ENRICHMENT
2022

ARCHERY



INSTRUCTOR: AMANDA HARRIS

DATES/TIMES: JULY 25-28 FROM 9-NOON

AVAILABILITY: 24 MAX

GRADES: RISING 6TH-8TH

LOCATION: EAST MIDDLE SCHOOL

DO YOU EVER WONDER WHAT WOULD BE LIKE TO SHOOT A BOW LIKE ROBIN HOOD OR KATNISS? COME OUT TO ARCHERY WHERE YOU WILL LEARN HOW TO SHOOT GENESIS BOWS AND THE 11 STEPS OF ARCHERY. WE LEARN THE BASIC OF ARCHERY AND STUDY THE HISTORY OF ARCHERY.

contact amanda.harris@shelby.kyschools.us

[CLICK HERE TO REGISTER!](#)



SHELBY COUNTY PUBLIC
SCHOOLS SUMMER ENRICHMENT
2022

FUTURE CITY



#IL3

INSPIRED LEARNING, LEADING,
LIVING

INSTRUCTOR: AMANDA HARRIS

DATES/TIMES: BOTH SESSIONS WILL BE HELD
FROM 9-12:30 AT LOCATIONS BELOW

- SESSION 1-JUNE 13-17 AT WEST FOR RISING
4TH & 5TH GRADERS
- SESSION 2-JULY 18-22 AT EAST MIDDLE FOR
RISING 6TH-8TH GRADERS

AVAILABILITY: 25 MAX PER SESSION

HAVE YOU EVER IMAGINED HOW THE WORLD WILL LOOK IN
THE FUTURE? FUTURE CITY IS A WAY FOR YOU TO DESIGN A
CITY THAT IS AT LEAST 100 YEARS IN THE FUTURE. EACH
YEAR THE CITIES ARE DESIGNED AROUND A THEME, SUCH AS
LIVING ON THE MOON OR CREATING A WASTE-FREE CITY. AT
CAMP YOU WILL LEARN THE BASIC IDEA OF CITY DESIGN AS
WELL AS THIS YEARS THEME TO BE REVEALED AT CAMP.

contact amanda.harris@shelby.kyschools.us

[CLICK HERE TO REGISTER!](#)

SHELBY COUNTY PUBLIC
SCHOOLS SUMMER ENRICHMENT
2022

ART AROUND THE WORLD



INSTRUCTOR: TRACI SLAYTON

**DATES/TIMES: ALL CLASSES WILL BE HELD
FROM 10-12 ON THE FOLLOWING DATES**

- JUNE 14 & 21
- JULY 12 & 19

AVAILABILITY: 30 MAX

GRADES: RISING 2ND-5TH

LOCATION: SIMPSONVILLE ELEMENTARY

**TRAVEL AROUND THE WORLD WITH MS. SLAYTON AND MRS.
BARNETT. TRAVELERS WILL LEARN ABOUT TRADITIONAL
MEXICAN, AFRICAN, JAPAN AND MORE. STUDENTS WILL
CREATE ART WITH CLAY, YARN AND EVEN CORN HUSKS!**

contact traci.georges@shelby.kyschools.us

[CLICK HERE TO REGISTER!](#)

SHELBY COUNTY PUBLIC
SCHOOLS SUMMER ENRICHMENT
2022

ADVENTURES IN AGRICULTURE



INSTRUCTOR: NANCY WILSON

**DATES/TIMES: ALL SESSIONS WILL BE HELD FROM
8:30-12:30**

- **SESSION 1: JUNE 13-15 FOR RISING 4TH-6TH GRADERS**
- **SESSION 2: JUNE 20-23 FOR RISING 7TH-9TH GRADERS**

AVAILABILITY: 20 MAX

**LOCATION: COLLINS HIGH SCHOOL AGRICULTURE
DEPARTMENT**

STUDENTS ARE INVITED TO COME EXPLORE THE WORLD OF AGRICULTURE WITH OUR AGRICULTURE TEACHERS! THROUGHOUT THIS LEARNING EXPERIENCE, PARTICIPANTS WILL HAVE THE OPPORTUNITY TO EXPLORE MANY SECTORS IN THE AGRICULTURE INDUSTRY, INCLUDING: ANIMAL SCIENCE, PLANT SCIENCE/HORTICULTURE, AND AGRIBUSINESS. IF YOU HAVE A PASSION FOR ANIMALS, PLANTS, AND/OR FARMING, THIS IS AN EXCELLENT OPPORTUNITY TO GET INVOLVED! THERE IS POTENTIAL FOR SOME FIELD TRIPS TO TOUR FACILITIES WITH SOME OF OUR INDUSTRY PARTNERS.

contact nancy.wilson@shelby.kyschools.us

[CLICK HERE TO REGISTER!](#)



SHELBY COUNTY PUBLIC
SCHOOLS SUMMER ENRICHMENT
2022

BOARD GAME

CLUB

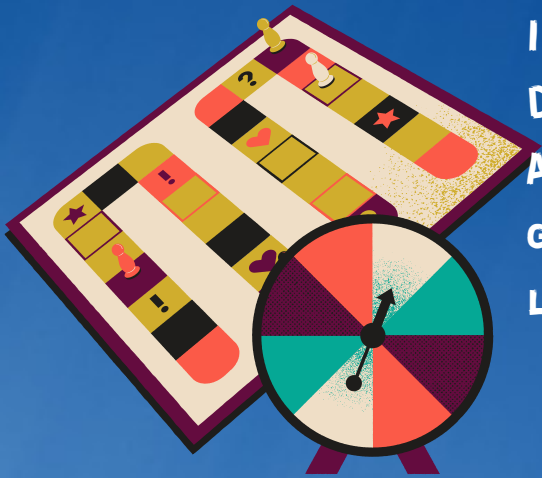
INSTRUCTOR: JOSH BALDAUFF & JESSICA MUDD

DATES/TIMES: JUNE 20-24 FROM 8-NOON

AVAILABILITY: 45 MAX

GRADES: RISING 7TH-12

LOCATION: COLLINS HIGH SCHOOL



IN THIS BOARD GAME CLUB, WE WILL FOCUS ON MODERN BOARD GAMES SPANNING EVERY GENRE. FROM ABSTRACT STRATEGY, TO WORKER PLACEMENT, TO SET COLLECTION, TO SOCIAL DEDUCTION, THE POSSIBILITIES ARE TRULY ENDLESS. FOR THE BOARD GAME CLUB, WE WILL BE FOCUSING IN ON SOME OLDER MODERN CLASSICS SUCH AS CATAN, 7 WONDERS, TICKET TO RIDE, AND PANDEMIC, AS WELL AS SOME NEWER GAMES SUCH AS AZUL, DISNEY VILLAINOUS, MYSTERIUM, AND WINGSPAN. GOT A GAME AT HOME THAT YOU LOVE THAT YOU'D LIKE TO INTRODUCE TO OTHERS? FEEL FREE TO BRING IT IN AND TEACH IT TO THE GROUP!

contact joshua.baldauff@shelby.kyschools.us

[CLICK HERE TO REGISTER!](#)



SHELBY COUNTY PUBLIC
SCHOOLS SUMMER ENRICHMENT
2022

SOUTHLAND DAIRY FARMERS

MOBILE CLASSROOM



INSTRUCTOR: KAREN MCPHERSON

DATE/TIMES: THURSDAY, JULY 14TH, 10 AM-3 PM

AVAILABILITY: 45 MAX PER SESSION

- **SESSIONS TIMES LISTED ON REGISTRATION FORM**

GRADES: RISING K-6TH

LOCATION: CLEAR CREEK ELEMENTARY

COME JOIN US FOR A ONE OF A KIND EXPERIENCE ON DAIRY AND DAIRY FARMING. STUDENTS WILL LEARN ABOUT WHERE MILK COMES FROM, THE PROCESS IT GOES THROUGH TO GET TO OUR TABLE AND EVEN GET TO SEE A LIVE MILKING DEMONSTRATION!

YOU ARE NOT GOING TO WANT TO MISS THIS!

contact karen.mcpherson@shelby.kyschools.us

[CLICK HERE TO REGISTER!](#)



SHELBY COUNTY PUBLIC
SCHOOLS SUMMER ENRICHMENT
2022

RED PLANETS
&
GREEN SCREENS



INSTRUCTOR: EMILY NORTHCUTT

DATE/TIMES: JUNE 14-15-16 & JUNE 21-22-23
FROM 9-NOON

AVAILABILITY: 30 MAX

GRADES: RISING 4TH-8TH

LOCATION: MCMS LIBRARY

ARE YOU LOOKING FOR AN ADVENTURE THIS SUMMER? JOIN US AND EXPLORE SPACE SCIENCE AND SCIENCE FICTION THROUGH AN ACTION-PACKED BOOK AND SOME RELATED ACTIVITIES! IN THIS EXPEDITION, WE WILL READ *THE LION OF MARS* BY JENNIFER L. HOLM AND EXPLORE THE MEDIA ARTS BY MAKING GREEN SCREEN CREATIONS THAT PERSUADE OTHER READERS TO JOIN YOU ON YOUR JOURNEY! PARTICIPANTS WILL HAVE FUN LEARNING THROUGH DISCUSSIONS AND ACTIVITIES WHERE WE WILL EXPLORE TOPICS RELATED TO OUR BOOK THAT WILL INCLUDE LEARNING ABOUT MARS, SPACE TRAVEL, GREEN SCREEN APPS, AND MORE! WE ALSO PLAN TO HAVE A VARIETY OF SPECIAL GUESTS JOIN US FOR OUR MEETINGS WHO WILL ENRICH OUR EXPLORATIONS OF SCIENCE, TECHNOLOGY, AND LITERATURE. DID WE MENTION THAT THE MAIN CHARACTER OF THE BOOK IS A KID WHO LIVES ON MARS'S FIRST COLONY AND WILL HAVE TO DECIDE WHETHER BREAKING ALL THE RULES IS WORTH IT TO SAVE THE PEOPLE HE LOVES? WANT TO KNOW HOW THIS HIGH-STAKES ADVENTURE ENDS? JOIN US AND FIND OUT!

contact emily.northcutt@shelby.kyschools.us

[CLICK HERE TO REGISTER!](#)

SHELBY COUNTY PUBLIC
SCHOOLS SUMMER ENRICHMENT
2022

WRITING WITH YOUR SENSES



INSTRUCTORS: STEPHANIE LOGSDON, AUTHOR/TEACHER
& ASHLEY BERLIN

DATE/TIMES: JUNE 20-23 FROM 8-NOON

AVAILABILITY: 24

GRADES: RISING 3RD-5TH

LOCATION: SHELBYVILLE STARGAZER PLAZA &
FRANKFORT CAPITOL GROUNDS



WRITERS WILL BE INSPIRED BY THEIR SURROUNDINGS, AND THIS
CAMP WILL TAKE WRITING TO A WHOLE NEW LEVEL THROUGH
MANY SENSORY EXPERIENCES. STUDENTS WILL HAVE THE
OPPORTUNITY TO USE PHOTOGRAPHY, MUSIC, AND HANDS-ON
EXPERIENCES TO GUIDE AND ENHANCE POETIC WRITING.

contact stephanie.logsdon@shelby.kyschools.us
ashley.berlin@shelby.kyschools.us



[CLICK HERE TO REGISTER!](#)

SHELBY COUNTY PUBLIC
SCHOOLS SUMMER ENRICHMENT
2022

SKATE & CREATE



INSTRUCTORS: ZACH HYPES
DATE/TIMES: JULY 25-29 FROM 9-1
AVAILABILITY: 20 MAX
GRADES: RISING 3RD-6TH
**LOCATION: SHELBY COUNTY SKATE PARK &
SETTLE GYM**

**LEARN AND PRACTICE SKATEBOARD, SCOOTERING AND
ROLLERSKATING SKILLS. CREATE STENCILS, MURALS STICKERS AND
MORE TO DECORATE THE SKATE PARK AND EQUIPMENT.**

contact zachary.hypes@shelby.kyschools.us



[CLICK HERE TO REGISTER!](#)



SHELBY COUNTY PUBLIC
SCHOOLS SUMMER ENRICHMENT
2022

**OVER/UNDER AND
INSIDE/OUT VISUAL, CLAY,
WEAVING, AND CANVAS ART
CAMP**



INSTRUCTORS: PAULA KINGSOLVER
DATE/TIMES: MONDAYS & FRIDAYS IN JULY
FROM 9-12

- JULY 11-15-18-22-25-29

AVAILABILITY: 20 MAX

GRADES: RISING 3RD-8TH

LOCATION: WRIGHT ELEMENTARY SCHOOL

**KEEP YOUR HEART, MIND, AND HANDS BUSY THIS SUMMER
BASKET WEAVING, MODELING WITH CLAY, PAINTING, AND
OTHER VISUAL ARTS AND CRAFTS. LEARNERS WILL WEAVE A
BASKET, HAND BUILD AND GLAZE A MUG OR BOWL WITH CLAY,
PAINT ON CANVAS, AND MUCH MORE.**

contact paula.kingsolver@shelby.kyschools.us



[CLICK HERE TO REGISTER!](#)

SHELBY COUNTY PUBLIC
SCHOOLS SUMMER ENRICHMENT
2022

ADVENTURES IN NATIONAL PARKS



**INSTRUCTORS: AMANDA HUM, CARLY COCKERELL,
& MELANIE DICKINSON**

DATE/TIME: JUNE 6-9 FROM 8:30-12:30

AVAILABILITY: 40

GRADES: RISING 5TH-8TH

LOCATION: WEST MIDDLE SCHOOL

**AN OPPORTUNITY FOR STUDENTS TO DIGITALLY DISCOVER AND
EXPLORE THE NATIONAL PARKS ACROSS THE US AND ZOOM WITH
PARK RANGERS AND OTHERS IN THE FIELD. THEY WILL LEARN
ABOUT THE LOGISTICS OF TRAVELING INCLUDING PLANNING A
BUDGET, READING A MAP, HOW WEATHER CONDITIONS CAN
IMPACT TRAVEL, WHAT TO PACK, AND MORE. AFTER
EXPLORATION, STUDENTS WILL PLAN AND PRESENT A TRIP OF
THEIR OWN TO HIKE, BIKE, OR DRIVE THROUGH A NATIONAL PARK
IN THE US.**

contact amanda.hum@shelby.kyschools.us

[CLICK HERE TO REGISTER!](#)



SHELBY COUNTY PUBLIC
SCHOOLS SUMMER ENRICHMENT
2022

SKYLAB PORTABLE PLANETARIUM



INSTRUCTOR: KAREN MCPHERSON
DATE/TIMES: JULY 25
AVAILABILITY: 50 MAX PER SESSION
• **SESSIONS TIMES LISTED ON
REGISTRATION FORM**
GRADES: RISING K-8TH
LOCATION: MCMS

COME JOIN US FOR A ONE OF A KIND EXPERIENCE IN THE SKYLAB PORTABLE PLANETARIUM. TAKE A JOURNEY THROUGH SOLAR SYSTEM AND OUTER SPACE! STUDENTS WILL LEARN HOW TO IDENTIFY EVERY PLANET IN OUR SOLAR SYSTEM IN DRAMATIC "FLIGHTS" TOWARDS EACH WORLD. THEY WILL BE INTRODUCED TO GREEK MYTHOLOGICAL CHARACTERS AND SEE HOW THESE HEROES OF THE PAST CAN BE FOUND IN THE STARS. STUDENTS WILL WITNESS THE NIGHT SKY IN DIFFERENT SEASONS AND FROM DIFFERENT GLOBAL PERSPECTIVES. STUDENTS WILL LEARN ABOUT CONSTELLATIONS, OUR PLACE IN SPACE, PLANETS AND MUCH MORE!!

YOU ARE NOT GOING TO WANT TO MISS THIS!

contact karen.mcpherson@shelby.kyschools.us

[CLICK HERE TO REGISTER!](#)



SHELBY COUNTY PUBLIC
SCHOOLS SUMMER ENRICHMENT
2022

INWARD BOUND: A YOGA EXPLORATION FOR TEENS



INSTRUCTORS: EILEEN RYAN & HEIDI BARTHOLOMEW
DATE/TIME: JULY 11-15 FROM 10-NOON
AVAILABILITY: 30
GRADES: RISING 9TH-12TH
LOCATION: COLLINS HIGH SCHOOL CHOIR ROOM

STUDENTS WILL HAVE THE OPPORTUNITY TO EXPLORE THE PHYSICAL POSTURES OF YOGA ALONGSIDE MEDITATION, BREATH WORK, AND SELF-REFLECTION. THEY'LL LEARN ABOUT YOGA HISTORY AND PHILOSOPHY AS WELL AS THE BENEFITS OF YOGA FOR MENTAL HEALTH AND ATHLETIC PERFORMANCE. ALL PARTICIPANTS WILL LEAVE WITH A "YOGA TOOLBOX" TO BUILD AND MAINTAIN THEIR OWN PRACTICE AND IMPLEMENT WHEN THEY NEED MOTIVATION, REST, SELF-COMPASSION, AND SO MUCH MORE. THIS EXPERIENCE IS PERFECT FOR STUDENTS WITH ANY LEVEL OF EXPERIENCE - BEGINNERS ARE WELCOME!

contact eileen.ryan@shelby.kyschools.us

[CLICK HERE TO REGISTER!](#)



SHELBY COUNTY PUBLIC
SCHOOLS SUMMER ENRICHMENT
2022

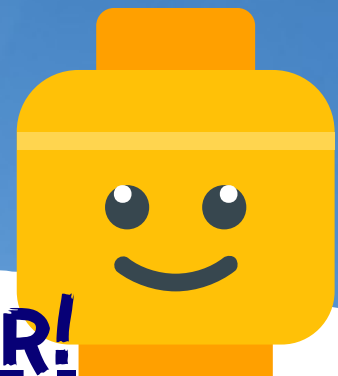
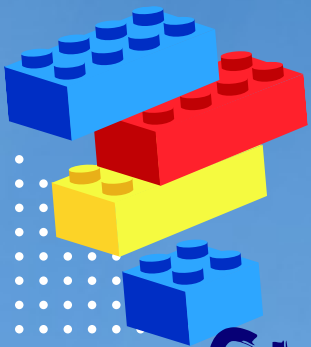
**BUILDING SUMMER FUN
BRICK BY BRICK**



**INSTRUCTORS: DR. MICHAEL SHELL & KAREN
MCPHERSON**
DATE/TIME: JUNE 13-16 FROM 9-NOON
AVAILABILITY: 30
GRADES: RISING 3RD/4TH
LOCATION: JCTC MILESTONE CAMPUS

THERE IS NO EXCUSE FOR A DREARY SUMMER WHEN YOU CAN BUILD YOUR OWN FUN BRICK BY BRICK. THINK OF THIS AS SHELBYVILLE'S OWN VERSION OF LEGO MASTERS! THIS HANDS-ON CAMP WILL EXPLORE NOVEL BUILDING TECHNIQUES, CREATIVE COMPETITIONS, AND EPIC MOCs (MY OWN CREATIONS). LEAD BY DR. MICHAEL TROY SHELL – PROFESSOR OF PHILOSOPHY AT JCTC AND PROUD AFOL (ADULT FAN OF LEGO). DR. SHELL WILL NOT ONLY GIVE STUDENTS THE OPPORTUNITY FOR CREATIVE FUN BUT ALSO PUSH THEM TO THINK CRITICALLY ABOUT THE SELF AND WORLD WE BUILD EVERY DAY!

contact susanne.burkhardt@shelby.kyschools.us



[CLICK HERE TO REGISTER!](#)

SHELBY COUNTY PUBLIC
SCHOOLS SUMMER ENRICHMENT
2022



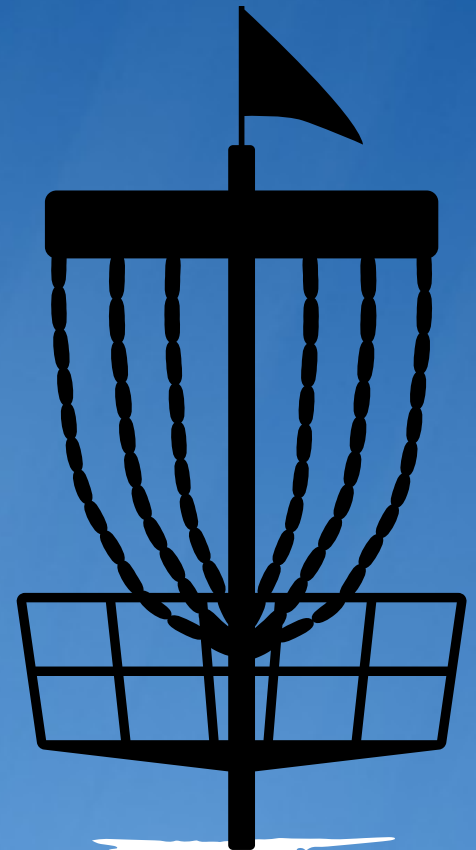
**DISC
GOLF**

INSTRUCTOR: JARED CORDRAY
DATE/TIMES: JULY 25/26/27/28 FROM 9-NOON
AVAILABILITY: 24 MAX
GRADES: RISING 8TH-12TH
LOCATION: SHELBY CHRISTIAN CHURCH

**ANYONE CAN BE A DISC GOLFER. COME LEARN THE BASICS AND
HAVE SOME FUN**

**YOU WILL LEARN HOW TO THROW BACKHAND, FOREHAND,
PUTTING, AND A FEW OTHER SHOTS. AFTER LEARNING THE
DIFFERENT THROWS, YOU WILL LEARN THE BASICS OF THE
GAME OF DISC GOLF AND THE RULES. LASTLY, YOU WILL GET TO
TRY OUT A FEW HOLES YOURSELF AND ENJOY BEING
OUTDOORS.**

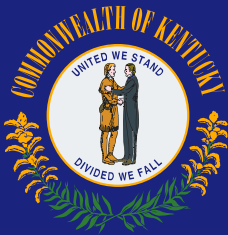
contact jared.cordray@shelby.kyschools.us



[CLICK HERE TO REGISTER!](#)

SHELBY COUNTY PUBLIC
SCHOOLS SUMMER ENRICHMENT
2022

KENTUCKY UNCOVERED



INSTRUCTORS: MATT DENTON

DATE/TIME: JUNE 13-14-15 FROM 8-3

AVAILABILITY: 40

GRADES: RISING 6TH-9TH

LOCATION: WEST MIDDLE

JOIN US FOR A 3-DAY EXPLORATION OF THE BLUEGRASS TIMELINE AS WE VISIT HISTORICAL LANDMARKS ACROSS THE STATE. STEP INTO THE MIND OF AN ARTIST, JOURNALIST, OR PHOTOGRAPHER OF THE PAST AS WE BRING HISTORY TO LIFE WITH FIRST-HAND ENCOUNTERS. STUDENTS WILL BEGIN THEIR WEEK WITH A SEMINAR IN KENTUCKY HISTORY, CREATING A TIMELINE AND MAPPING OUT OUR JOURNEY. THEN WE WILL TRAVEL TO ABRAHAM LINCOLN'S BIRTHPLACE AND MY OLD KENTUCKY HOME AND DIVE DEEPER INTO OUR KENTUCKY HERITAGE. YOU WON'T WANT TO MISS OUT ON THIS FUN-FILLED ADVENTURE!

contact matt.denton@shelby.kyschools.us

[CLICK HERE TO REGISTER!](#)



SHELBY COUNTY PUBLIC
SCHOOLS SUMMER ENRICHMENT
2022

BIKE SKILLS, DRILLS & SHENANIGANS



INSTRUCTORS: KATHY MCCLURKIN

DATE/TIMES: 9-3

- **SESSION 1: JUNE 13-14**
- **SESSION 2: JULY 5TH-6TH**

AVAILABILITY: 25

GRADES: RISING 6-12

LOCATION: CLEAR CREEK PARK

THIS CAMP IS BEING OFFERED FOR ATHLETES WHO WILL LEARN THE BASIC FUNDAMENTALS FOR MT. BIKING. IT WILL INVOLVE DRILLS FOR BASIC SKILL DEVELOPMENT, GAMES, AND GROUP RIDES. THERE WILL BE FUN ACTIVITIES LIKE SCAVENGER HUNTS AND ON-THE-BIKE GAMES. MOST BIKES WILL BE ACCEPTABLE FOR PARTICIPATION AND A HELMET IS REQUIRED. IF YOU WANT TO PARTICIPATE AND DO NOT HAVE THESE ITEMS PLEASE LET ME KNOW SO I CAN HELP!

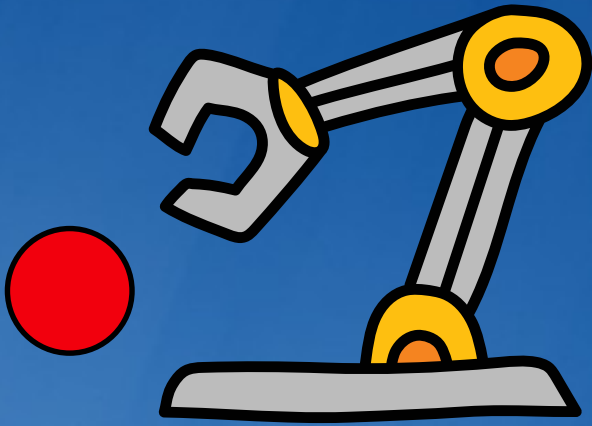
contact katherine.mcclurkin@shelby.kyschools.us

[CLICK HERE TO REGISTER!](#)



SHELBY COUNTY PUBLIC
SCHOOLS SUMMER ENRICHMENT
2022

VEX ROBOTICS



INSTRUCTORS: LAURA SMITH

DATE/TIME:

- **SESSION 1: JUNE 6-10 FROM 8:30-NOON
RISING 5TH-6TH GRADES**
- **SESSION 2: JUNE 13-17 FROM 8:30-NOON
RISING 7TH-8TH GRADES**

AVAILABILITY: 24 PER SESSION

LOCATION: COLLINS HIGH SCHOOL

DURING THE VEX ROBOTICS CAMP, STUDENTS WILL HAVE FUN EXPLORING AND LEARNING ABOUT STEM IDEAS AND CONCEPTS WITH VEX V5 ROBOT KITS AND THE VIRTUAL VEXCODE VR PLATFORM! STUDENTS WILL IGNITE THEIR LOVE OF LEARNING AS THEY CODE A VIRTUAL ROBOT TO SCORE POINTS. THEN, THEY WILL COMPLETE ENGAGING ACTIVITIES THAT BLEND CREATIVITY AND IMAGINATION WITH COMPUTER SCIENCE AND ENGINEERING AS THEY BUILD AND OPERATE A PHYSICAL ROBOT IN THE TIPPING POINT ROBOTICS COMPETITION.


contact laura.smith@shelby.kyschools.us

[CLICK HERE TO REGISTER!](#)



SHELBY COUNTY PUBLIC
SCHOOLS SUMMER ENRICHMENT
2022

**SHELBY SUMMER SCHOLARS
PROGRAM**



INSTRUCTOR: SUSIE BURKHARDT & DR. MICHAEL SHELL
DATE/TIMES: JULY 11-14 FROM 9:00-12:00
AVAILABILITY: 24
GRADES: RISING 10TH GRADE
LOCATION: JCTC SHELBY CAMPUS

SHELBY SUMMER SCHOLARS PROGRAM (SSSP) IS A COLLABORATION BETWEEN SHELBY CO. PUBLIC SCHOOLS AND JEFFERSON COMMUNITY AND TECHNICAL COLLEGE TO PROVIDE OPPORTUNITY FOR RISING SOPHOMORES IN SCPS TO ATTEND A 4 DAY SUMMER EXPERIENCE APPLICATION IS OPEN TO STUDENTS IN THE CLASS OF 2025.

GOALS OF THE SUMMER SCHOLARS PROGRAM INCLUDE:

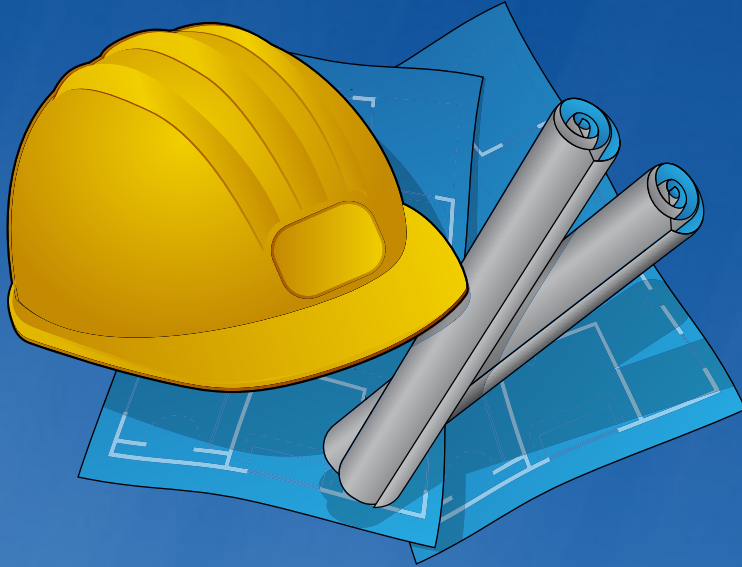
- BUILDING CAPACITY IN STUDENTS, WHO MAY BE FIRST-GENERATION COLLEGE STUDENTS, TO NAVIGATE OPPORTUNITIES DURING HIGH SCHOOL YEARS.
- BUILD BACKGROUND KNOWLEDGE ON COLLEGE, COLLEGE APPLICATION/ADMISSION PROCESS AND FINANCIAL AID
- DEVELOPING CURIOSITY AND BACKGROUND KNOWLEDGE ABOUT TOPICS OF INTEREST
- FOCUSING ON DEVELOPING RESILIENCE AND SELF RELIANCE IN STUDENTS
- EXPOSING STUDENTS TO COLLEGE PROFESSORS AND EXPERTS IN A VARIETY OF FIELDS OF STUDY

contact susanne.burkhardt@shelby.kyschools.us

[CLICK HERE TO REGISTER!](#)

SHELBY COUNTY PUBLIC
SCHOOLS SUMMER ENRICHMENT
2022

ENGINEERING DESIGN PROCESS



INSTRUCTOR: AMANDA HARRIS &
MERRELENE OVERALL

DATE/TIMES: JUNE 6-9 FROM 9-12:30

AVAILABILITY: 30

GRADES: RISING 6TH-8TH

LOCATION: EAST MIDDLE SCHOOL

DO YOU LIKE TO CREATE AND BUILD THINGS. DO YOU LIKE TO CREATE A PLAN AND EXECUTE? JOIN US FOR ENGINEERING DESIGN PROCESS WHERE WE WILL LEARN THE ENGINEERING DESIGN PROCESS AND BUILD BRIDGES AND TOWERS AND DESIGN SPEED BOATS AND SO MUCH MORE.

contact Amanda.harris@shelby.kyschools.us

[CLICK HERE TO REGISTER!](#)

