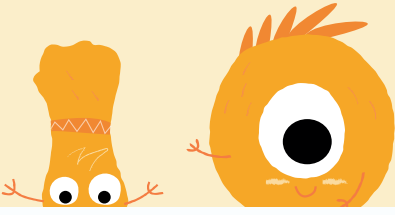


lalilo



What is the Placement Test?

When students first begin learning on Lalilo, they will be given a series of 30 questions on phonics skills and sight words to assess their level. The placement test should take about 10 minutes to complete. The questions start at a level that corresponds to the grade level you selected when you set up your class, and they adapt to the student's level based on their responses. You may see students working on something that is too difficult for them, and this is part of the process of identifying just the right starting point for each student. Once they have completed the test, they will be placed at a starting lesson along the Lalilo progression. You'll see lessons that were bypassed by the placement test in your teacher dashboard. They appear with gray stripes with a label that reads "skipped due to placement test."

If you have any questions : lalilosupport@renaissance.com

