

NOX APP Player User Manual

Contents

1. Installation	2
1.1. System Requirements	2
1.2. Download and Install	2
1.3. Errors you might encounter while installing and how to fix them	2
1.4. Enable VT (Virtualization Technology) to get better performance	3
2. Main Functions Tour	3
2.1. How to install APK files	3
2.2. System Setting: language	4
2.3. System Setting: customize CPU and RAM assigned to the Player	4
2.4. System Setting: customize resolution and orientation	4
2.5. System Setting: customize IMEI	4
2.6. Player function: Shake	4
2.7. Player function: Keyboard Control	4
2.8. Player function: Screen Shot	5
2.9. Player function: change your virtual location	5
2.10. Player function: share files between PC and NOX APP Player	6
2.11. Control support: zoom in and out	8
2.12. Control support: camera and microphone	8
2.13. Control support: Gravity sensor	8
2.14. Control Support: Gamepad/Controller connection	8
2.15. Start multiplayer mode	8
3. Advance Settings	9
3.1. Optimize your graphics card for gaming: Enable the higher performance NVIDIA graphic card	9
3.2. Optimize your graphics card for gaming: Enable the higher performance graphic card for AMD PC with 2 graphic cards	10
4. Get Online Help	12

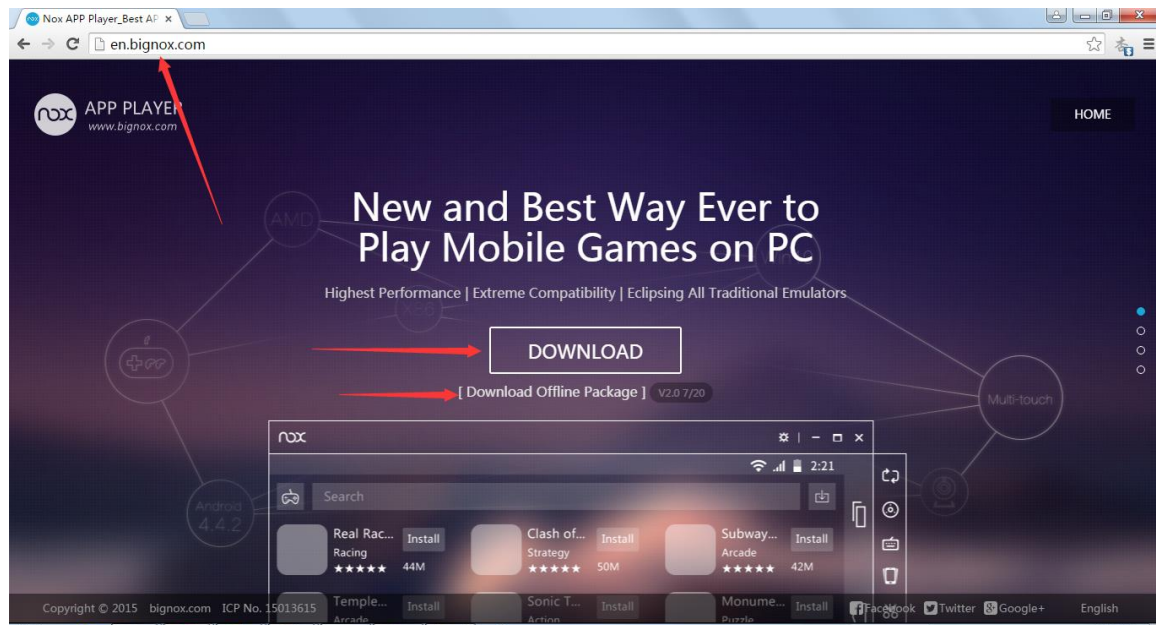
1. Installation

1.1. System Requirements

- Windows XP(32) SP3/Windows Vista/Windows 7/Windows 8/Windows 10
- AMD or Intel CPU (with Virtualization Technology support preferred)
- At least 512MB RAM
- GPU with OpenGL 2.0+ support
- At least 1GB of free disk space under installation path (for saving the data of the apps you may install) and 300MB under system disk

1.2. Download and Install

Go to our official website following this link: <http://en.bignox.com/> and click the *Download* button. Once download successfully completed, double click to run the exe setup file, make sure you have internet access during the installation. Or you can choose to *Download offline installer* instead and double click the full package installer to install without internet access.



1.3. Errors you might encounter while installing and how to fix them

[Make sure NOX is not blocked by your firewall.]

- Virtual machine error, restart emulator to repair or contact us !
Possible solutions:
 1. Quit your antivirus software and restart NOX APP Player
 2. Right click the player icon on your desktop—open file location—right click nox.exe—run the exe as Administrator



3. Go to C:\Program Files\Bignox\BigNoxVM\RT, find BigNoxVMMgr.exe and right click it—Properties—Compatibility—run in compatible mode—choose windows Server 2008(Service Pack)—Apply—OK, then restart NOX APP Player.
- Time out, please try again!
Possible solutions:
 1. Right click the NOX APP Player icon on desktop—open file location—right click nox.exe—run the exe as Administrator
 2. Start Task Manager (ctrl+alt+delete), end nox_adb.exe, then restart NOX APP Player.
 3. Restart your computer and then restart the Player
 4. Re-install NOX APP Player
 - Cannot start NOX APP Player in a virtual machine.
Nox APP Player cannot be run from a virtual machine.
 - Emulator has to reboot for some reasons
Please upgrade your Graphic Card driver.

1.4. Enable VT (Virtualization Technology) to get better performance

Virtual technology could improve the performance of your computer and allow NOX APP Player to run faster.

First, you need to check if your CPU supports Virtualization (aka. VT-x, Virtual Technology). In order to do so, you can refer to this useful tool: [LeoMoon CPU-V](#)

If your CPU supports Virtualization, you will need to enable it. Most computers' Virtualization is disabled by default. To enable it, enter BIOS by press a designated key repeatedly when your computer is booting up. The designated key could be any of the function key or ESC key depends on your computer's brand.


Once you enter the BIOS mode, look for Virtualization, VT-x, Intel Virtual Technology or anything that says "Virtual" and enable it. Once done, turn off your computer completely then turn it back on. Now Virtualization is enabled and the performance of Nox App Player is even better.

2. Main Functions Tour


2.1. How to install APK files

There are three ways to install your favorite games or apps in NOX APP Player. First, you could start NOX APP Player, open Google Play and search for the games or apps you want and click Install. Second option is to download the APK file of the game/app to your PC and drag it into NOX APP Player window and drop to install. Another option is double-click the APK file on your computer and NOX APP Player will be activated and start installing the game/app automatically.


2.2. System Setting: language

Click the Settings icon  on the upper right corner of the Player window. Go to General—Language, and you will be able to change between Chinese/English/Japanese/Korea in the drop-down menu. Click Save Changes and the language will be refreshed.


2.3. System Setting: customize CPU and RAM assigned to the Player

Click the Settings icon  on the upper right corner of the Player window. Go to Advanced—Performance Setting, tick the box before Customize, then you will be able to set the CPU and RAM you would like to allocate to the NOX APP Player. Just input the number in the boxes after CPU and RAM, and then click Save Changes. Note that the number of allocated CPU cores should not exceed the number of physical cores you have. Also make sure to leave Windows enough RAM to function properly.

2.4. System Setting: customize resolution and orientation

Click the Settings icon  on the upper right corner of the Player window. Go to Advanced—Startup Setting, choose Tablet to set the orientation to landscape and choose Phone to set the orientation to portrait. Please note that for applications require a certain orientation, the NOX APP Player will adjust automatically no matter which orientation you set it to. For example, if you activate Clash of Clans in the Player, it will turn to landscape display even though you set it to portrait. There are two recommended resolution under each orientation. Tick the box before Customize and you will be able to set the resolution as you may want. Just input the figure after the boxes of Width/Height/DPI and Save Changes. Sometimes you have to experiment with different values to find the one that works for your screen size.

2.5. System Setting: customize IMEI

Click the Settings icon  on the upper right corner of the Player window. Go to Properties, there you will find the current IMEI number and by clicking the Create button, a new IMEI will be generated for the Player. Save Changes and the new IMEI will be activated.




2.6. Player function: Shake

Shake is a unique function of smartphone apps. In WeChat, you can shake to find people nearby. In other apps, you can shake to refresh or slide to the next page. This function won't be affected in NOX

APP Player. You could simply click the shake button  on the side bar to simulate the physical shake of your phone.

2.7. Player function: Keyboard Control

It will be more convenient to control your character in an ARPG game using the classic WASD keys. Here's how you can achieve that with NOX APP Player. Remember, you have to enter the game first to

set the control keys. Now with the game on, click the Keyboard control button  on the side bar, drag the cross key  to the place you would like and click save, then you will be able to control your character's move by the WASD keys. Or if you prefer to assign other keys for these function, click  besides the cross button, hold your mouse and make a left move, in the box appeared, input the key you want to use to map this action (for example: ←). This way, you could control your character with the keys defined by yourself. These keys could also be assigned to release special skills of your character.


Note that with this function on, you might find yourself unable to type in the game, this is because some of your keys are occupied controlling the character. To enable typing, just press Q+1 to terminate the key mapping function.

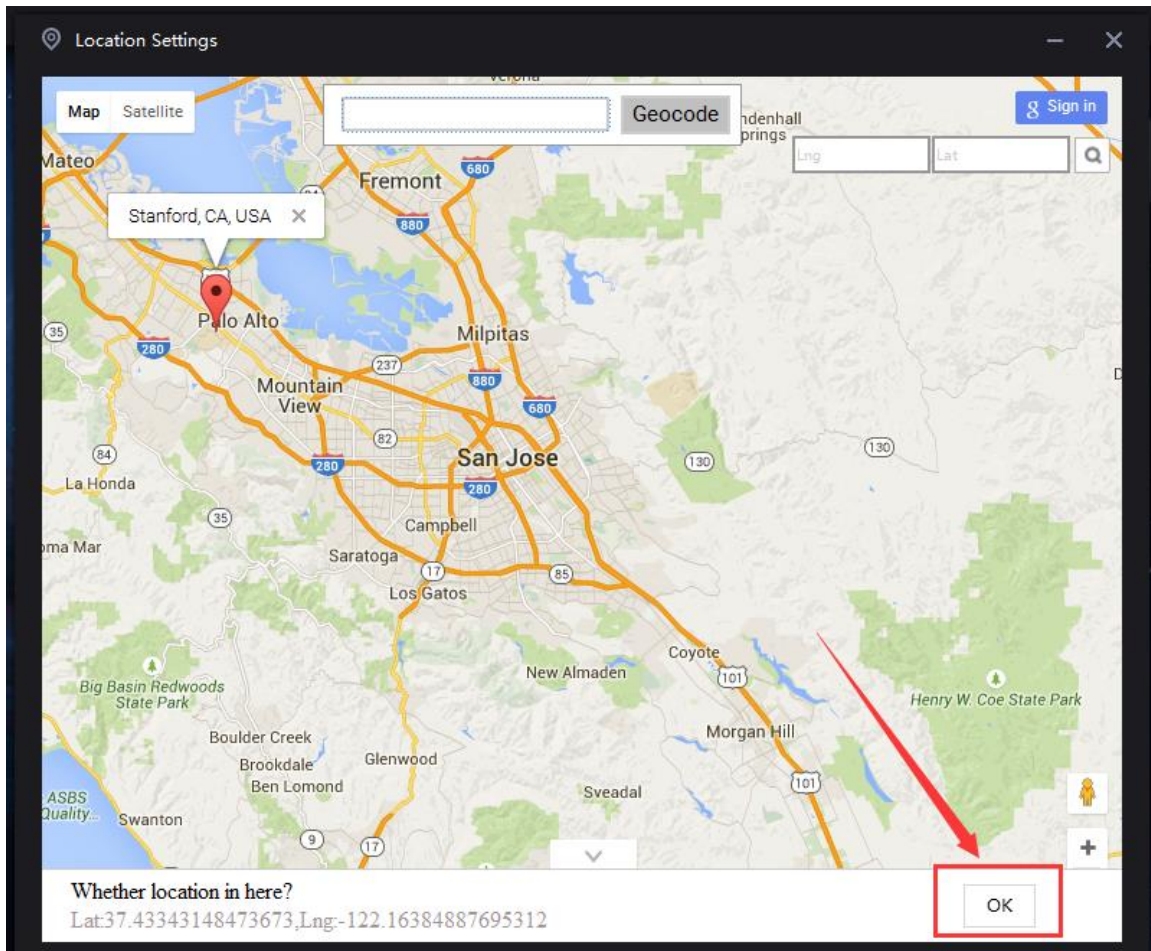


2.8. Player function: Screen Shot


Click the Screen Capture button on the side bar to take a screenshot of the Player window. Screenshots are automatically saved and could be accessed in your Gallery.

2.9. Player function: change your virtual location

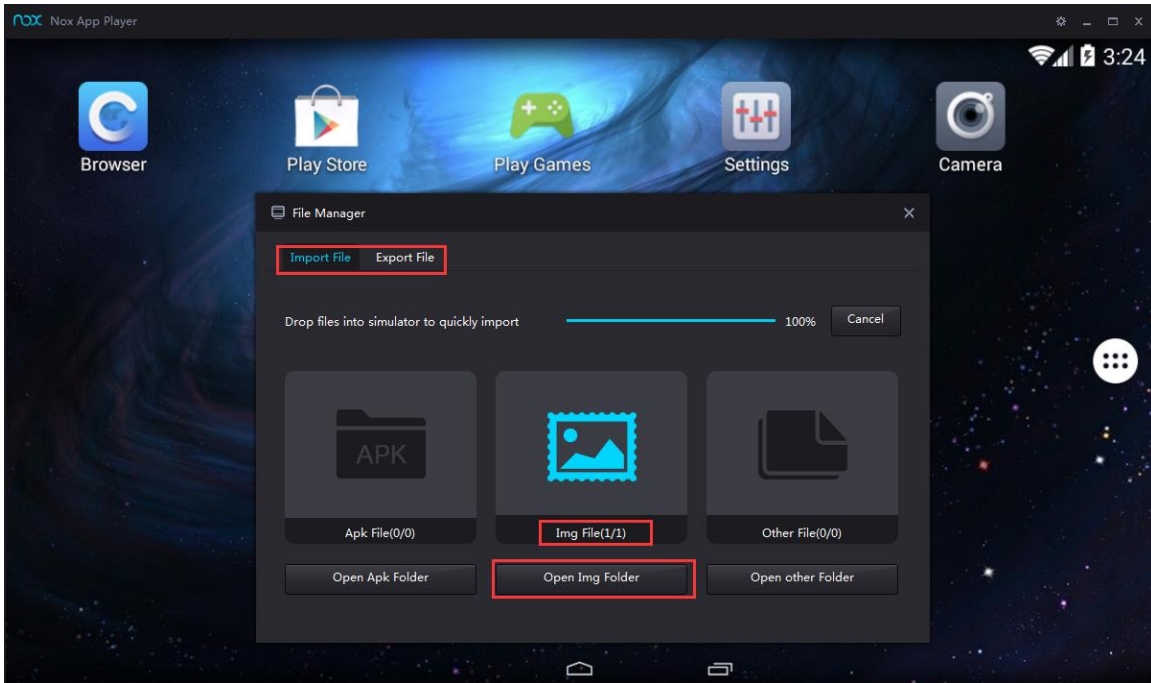
Click the Virtual Location button  on the side bar, drag the map and click the place where you want to locate yourself, or search the destination in the searching field on the top of the window. Once located yourself to the desired place, move your mouse to the bottom of the window and click the OK button appeared on the screen to save your location setting otherwise the new setting won't take effect.



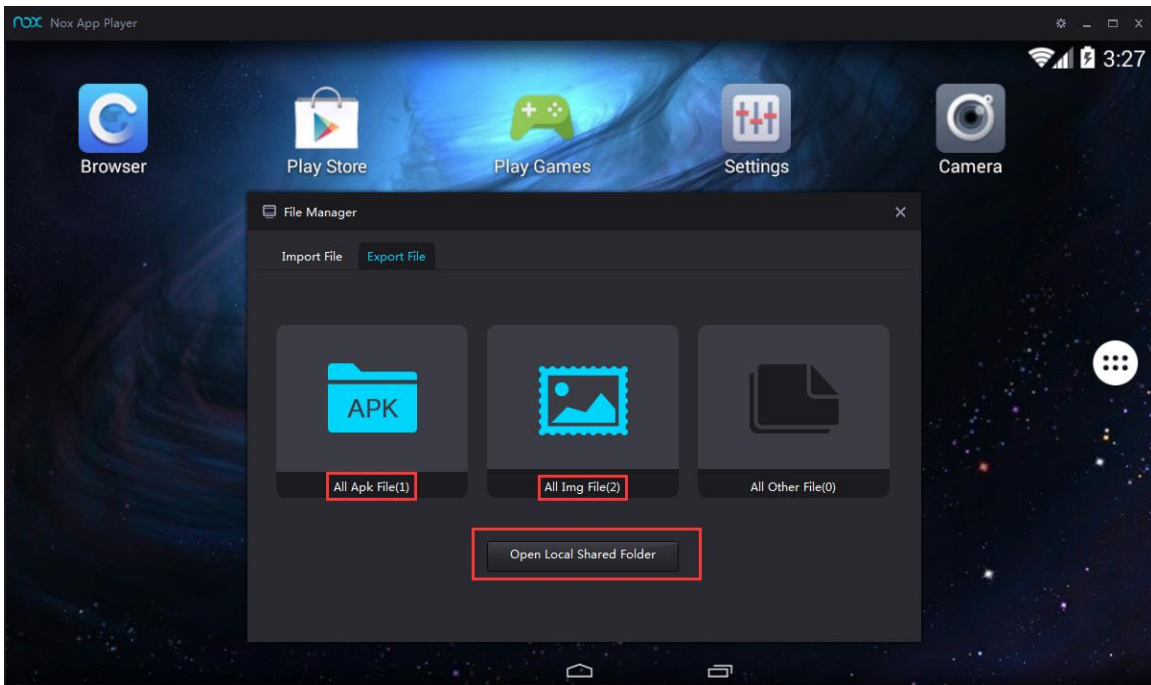
2.10. Player function: share files between PC and NOX APP Player

Sharing files between the Player and your PC has never been so easy, whether it's apk file, img file or any other file types. Click the computer icon  on the side bar, you can see there are two tabs: Import and Export.

To import, stay on the "Import File" tab and drag the documents to the blank area of the player window. The image will turn light blue once the file is successfully transported. You will also see the figures change after import. To access the file folder in the Nox App Player where you just transported your file into, simply click the Open/Apk/Img/other Folder button under each file type.



To export, go to the Export Tile tab, there you will see a file count of the documents you could export from your app player to your PC. Click the Open Local Shared Folder button. You will see all the documents in traditional windows file folder window. Copy and paste or move them to other folder on your computer as you wish.






2.11. Control support: zoom in and out

Use Ctrl+mouse to zoom in/out. Easy, isn't it?

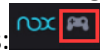
2.12. Control support: camera and microphone

NOX APP Player can use your computer's camera and microphone. No special setting needed for this function.



2.13. Control support: Gravity sensor

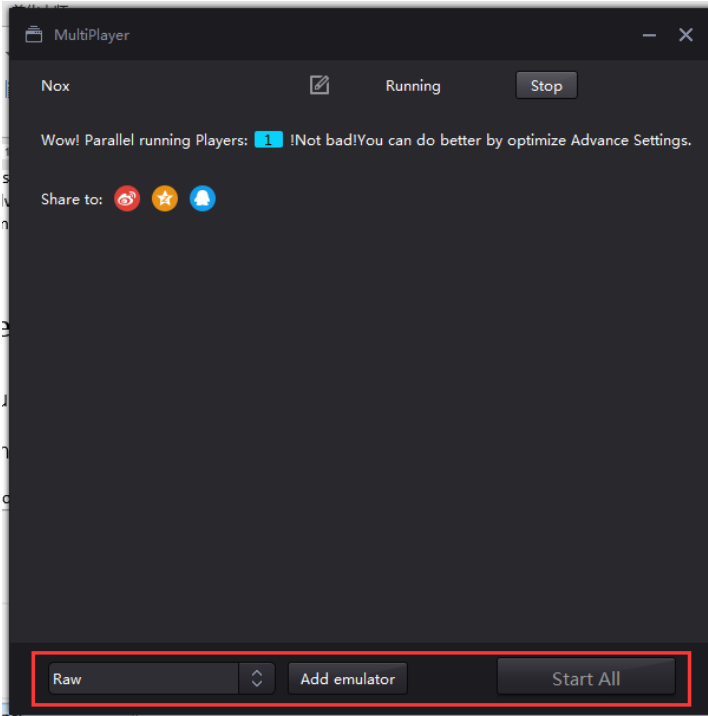
Gravity sensor is required to play games like Temple Run or Subway Surfers. Here's how to set it. First, start the game, then click the keyboard control  button on the side bar. On the upper left corner of the screen, click the Gravity Sensor icon  and assign the corresponding keys for each direction. Save the settings by clicking the save button .

2.14. Control Support: Gamepad/Controller connection

NOX APP Player supports wired Gamepad and Controller. Plug in and if successfully connected, there will be a sign besides the software logo like this: . We tested most Betop Game Controller and have no problem connecting, but we can't assure that all the gamepads on the market are supported.

2.15. Start multiplayer mode

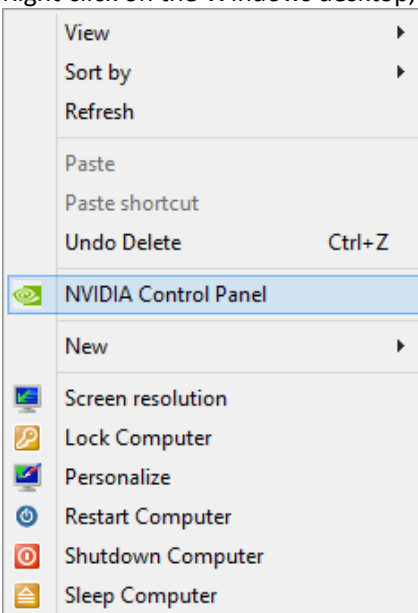
After installation, you will find two shortcuts for the player on your desktop. One is NOX , one is Multiplayer . Double click the Multi-Drive shortcut and at the bottom of the window you could choose to start a clean new version, or copy the contents of an existing player by choosing from the drop down list before Add emulator. There is no limit how many players you could run as long as your computer's hardware is good enough to support them. With this function, you could play different games/apps at the same time.



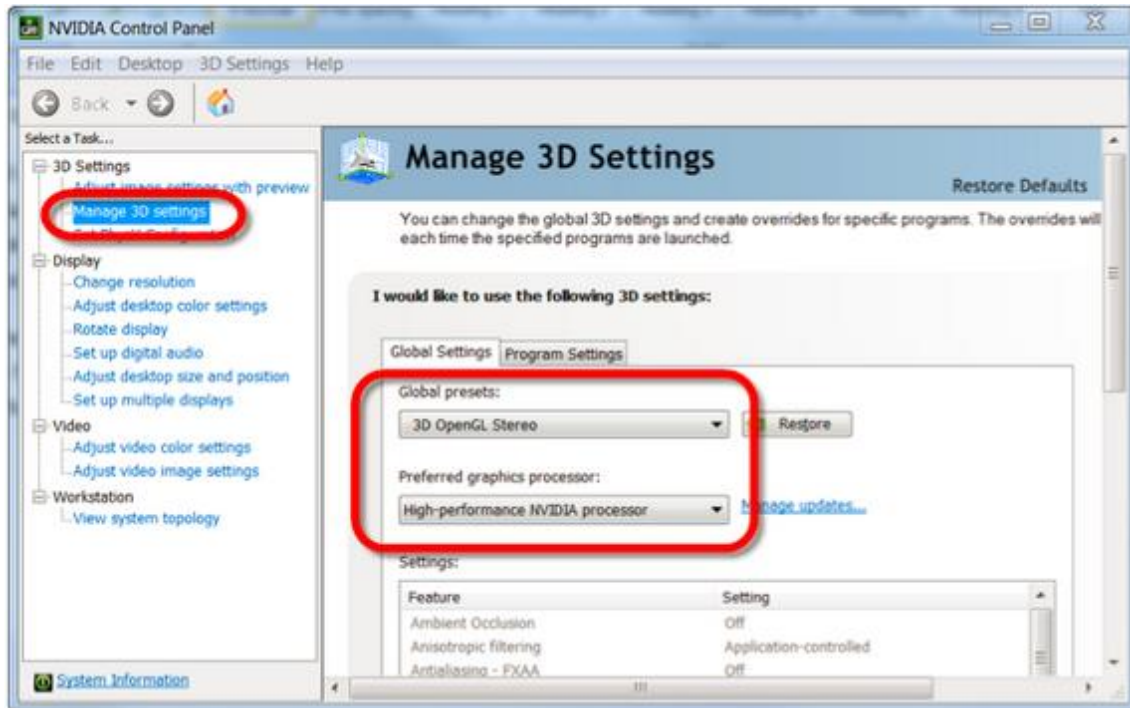
3. Advance Settings

3.1. Optimize your graphics card for gaming: Enable the higher performance
NVIDIA graphic card

Right-click on the Windows desktop, then click **NVIDIA Control Panel** from the context menu



Go to **Manage 3D settings—Global Settings** tab as shown in the below screenshot, in the drop down menu of **Preferred graphics processor**, choose the High-performance NVIDIA processor. Then click “Apply” at the bottom right hand side of the window.

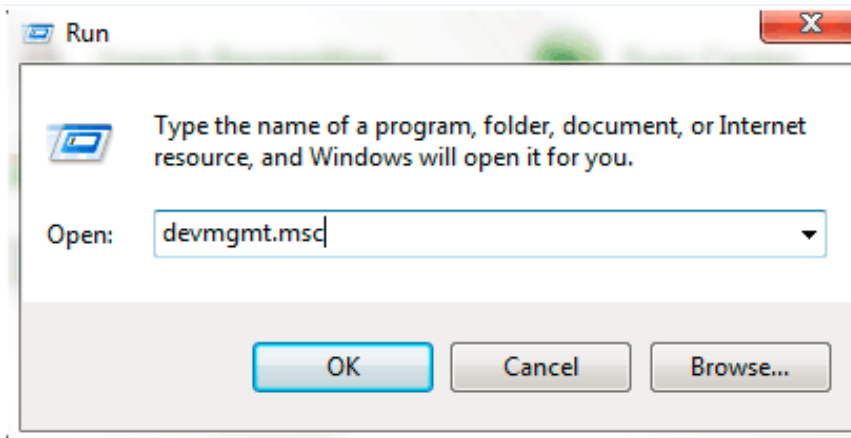


Or, if you only want to active the higher performance graphic card for a specific software, which is Nox in our case, you could keep the default settings under the Global Settings tab, go to the second tab Program Settings instead, click the drop down menu underneath “Select a program to customize” and click “Nox App Player” (if Nox is not listed do not worry, as you can add it to the list manually. To do so simply click the “Add” button, and navigate to your “Nox App Player” folder, find “Nox.exe” icon and double click it).

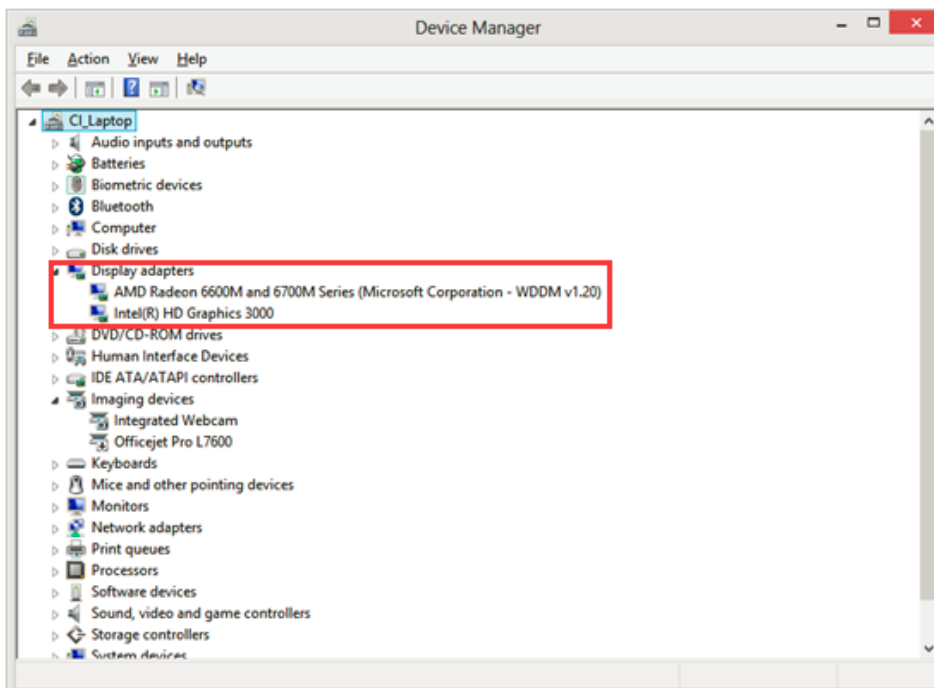
Then in the drop down menu of “2. Select the preferred graphics processor for this program”, choose “High-performance NVIDIA processor”, as always, don’t forget to click “Apply” at the bottom right hand side of the window.

3.2. Optimize your graphics card for gaming: Enable the higher performance graphic card for AMD PC with 2 graphic cards

First we need to check if there are two graphic cards on your computer. Click Start menu—Run (or press Win+R), input “devmgmt.msc” in the dialogue box to open the Device Manager.



In the Device Manager, unfold “Display adapters” to see if there are two graphic cards.



If the answer is yes, and one of the card is AMD, then go to “Start”-“Programs”-“Catalyst Control Center” (Note: 1. There is a huge variation in versions of the ATI/AMD Radeon Catalyst Control Center for adjusting the settings for these cards so the following should be seen more as indicative than actual. Even if your Control Center looks different to these images, the principles are the same and you should be able to find similar options to those described here. 2. If you don’t have “Catalyst Control Center” then you need to update AMD driver and make sure to install it this time.)

On the left side Navigation panel of AMD Catalyst Control Center, go to Power—Switchable Graphics Application Settings, then on the right, find Nox App Player and set its Graphics Settings to High Performance. Click Apply at the bottom right corner of the window. Then you are set. For some computer, you might need a restart to activate the changes.



4. Get Online Help

Didn't find an answer to your question in the above instructions? Feel free to write to us directly: operation@bignox.com to report a problem. Kindly include the problem description, basic information of your computer settings and operating system, and a screenshot of the problem if possible.

You can also follow us on Facebook/Twitter/Google+ to communicate with us.

You can also check out our blog <http://en.bignox.com/blog> where we regularly update answers to questions received and problems reported, release notes and tutorials.