



2022 Ontario Price List



Strength Mixes

MIX	Price
10 MPa	\$205.00/m ³
15 MPa	\$209.00/m ³
20 MPa	\$217.00/m ³
25 MPa	\$227.00/m ³
30 MPa	\$238.00/m ³

MIX	Price
35 MPa	\$250.00/m ³
40 MPa	\$262.00/m ³
45 MPa	\$290.00/m ³
50 MPa	\$353.00/m ^{3*}
70 MPa	On request**

Note: The above standard strength mixes are based on mix designs including a water reducing admixture

*Includes HSF Cement and Superplasticizer.

**70 MPa Mixes and Higher includes HSF Cement, Superplasticizer and Temperature Control.

Segmentation Pricing

CAISSONS & SHORING	Price
0.4 MPa Piling Mix	\$197.00/m ³
2.0 MPa Piling	\$199.00/m ³
20 MPa 150mm slump	\$231.00/m ³
25 MPa 150mm slump	\$241.00/m ³
30 MPa 150mm slump	\$252.00/m ³

RESIDENTIAL HOUSING	Price
Footings & Walls 15 MPa	\$215.00/m ³
0.70w/c (OBC) Class R1 & R2	
Footings & Walls 20 MPa	\$223.00/m ³
0.70w/c (OBC) Class R1 & R2	
Basement Floors 25 MPa 0.65w/c R3 (OBC)	\$230.00/m ³

CONTROLLED DENSITY/FILLS	Price
Unshrinkable Fill	\$194.00/m ³
4.0 MPa Pipe bedding	\$201.00/m ³

CSA Specification Mixes CAN/CSA-A23.1-19

STRENGTH	CLASS OF EXPOSURE**	W/C RATIO	Price
25 MPa	F-2, C-4	0.55	\$237.00/m ³
30 MPa	F-1, C-3, S-3	0.50	\$246.00/m ^{3**}
32 MPa	C-2, S-2	0.45	\$253.00/m ^{3**}
35 MPa	C-1	0.40	<1500 Coulombs \$261.00/m ³
40 MPa	C-1	0.40	<1500 Coulombs \$289.00/m ³
50 MPa (56 days)	CXL	0.40	<1000 Coulombs \$368.00/m ³

** In conformance with Section 4, Table 3 National Standards of Canada, CAN/CSA-A-23.1-19 "S" Series exposure prices are based on acceptable Portland/Slag blends for sulphate resistance

MTO/OPSS/Municipal Mixes

	Price
15 MPa	\$225.00/m ³
20 MPa	\$244.00/m ³
25 MPa	\$249.00/m ³
30 MPa	\$256.00/m ³

	Price
30 MPa Gunit Mix	\$329.00/m ³
35 MPa	\$276.00/m ³
35 MPa SCC	\$356.00/m ³
50 MPa	\$371.00/m ³

Note: for all MTO orders a minimum load size of 3 m³ is required

Projects may require supporting concrete mix documentations, Linear Shrinkage, AVS, RCP (includes concrete test load)

Linear Shrinkage Testing	\$2,000.00/test
Rapid Chloride Permeability (RCP)	\$2,000.00/test

Air Void System (AVS)	\$2,000.00/test
MTO Material Sampling Charge (as per OPSS)	\$250.00/event

Accelerated Strength Gain Mixes

DESIGN STRENGTH	75% OF DESIGN STRENGTH IN 24 HOURS	75% OF DESIGN STRENGTH IN 48 HOURS	75% OF DESIGN STRENGTH IN 72 HOURS
25 MPa, add	\$48.00/m ³	\$43.00/m ³	\$38.00/m ³
30 MPa, add	\$50.00/m ³	\$45.00/m ³	\$40.00/m ³
32 MPa, add	\$51.00/m ³	\$46.00/m ³	\$41.00/m ³
35 MPa, add	\$52.00/m ³	\$47.00/m ³	\$42.00/m ³
40 MPa, add	\$54.00/m ³	\$49.00/m ³	\$44.00/m ³
35 MPa, C-1, <1500 Coulombs, add	\$59.00/m ³	\$52.00/m ³	\$47.00/m ³

Based on minimum temperature of 20°C with supplementary heating as per C.S.A. requirements

Cold Weather Concrete

THERMALCRETE MIXES

AMBIENT TEMPERATURE DEGREES CELSIUS	THERMAL ADDITIVE	Price
Above +6	Thermal +6°C	\$35.00/m ³
+3 to +5	Thermal +3°C	\$40.00/m ³
0 to +2	Thermal 0°C	\$45.00/m ³
-3 to -1	Thermal -3°C	\$50.00/m ³
-7 to -4	Thermal -7°C	\$60.00/m ³
-10 to -8	Thermal -10°C	\$65.00/m ³
-15 to -11	Thermal -15°C	\$75.00/m ³



Ambient temperature refers to 12hrs after it has been poured.

All Thermalcrete mixes require a minimum 30MPa compressive strength.

Lightweight Mixes

Semi-Lightweight (1840 kg - 2000 kg/m ³) and Fully-Lightweight (1600 kg/m ³)	On request
DC Foamcrete®	On request

Aggregate/Blocks

13/14 mm Limestone / Crushed Gravel	\$20.00/m ³
40 mm Stone	On Request
Exposed Aggregate	On Request

BLOCKS - SIZES AVAILABLE: \$125.00ea

1) 5'x2'x2' (3000 lbs) non-interlocking	
2) 6'x3'x2' (5200 lbs) interlocking	
3) 9'x3'x2' (7000 lbs) interlocking	
Jersey Barriers	On Request

** Block sizes and availability vary from plant to plant

Concrete Enhancement Products

SUPERPLASTICIZERS

- Increased Workability
- Water/Cement Ratio Reduction \$18.00/m³

AIR ENTRAINMENT Less than 40 MPa	\$6.00/m ³
Greater than 40MPa	On Request

RX EXTENDED RETARDATION 4 hr	\$20.00/m ³
-------------------------------------	------------------------

R & SR NORMAL RETARDATION 2 hr	\$15.00/m ³
-------------------------------------------	------------------------

CALCIUM CHLORIDE 1%	\$8.00/m ³
2%	\$11.00/m ³

Grout Mixes

35 MPa 1-1	\$361.00/m ³
30 MPa 1-1.5	\$341.00/m ³
25 MPa 1-2	\$311.00/m ³
20 MPa 1-2.5	\$300.00/m ³
15 MPa 1-3	\$290.00/m ³
10 MPa 1-4	\$280.00/m ³
Pump Priming Grout	\$620.00/m ³

NON-CHLORIDE ACCELERATOR 1%	On request
2%	On request

CORROSION INHIBITING ADMIXTURE	\$3.50/litre
---------------------------------------	--------------

HOT WEATHER COOLING (ice only)	
Concrete Temperatures 26°C to 30°C	\$80.00/m ³
Concrete Temperatures 22°C to 25°C	\$100.00/m ³
Concrete Temperatures below 22°C	On Request

FAST TRACK CONCRETE	Subject to Specification
----------------------------	--------------------------

Colour Pigments

NOTES

Tier 1	On request
Tier 2	On request
Tier 3	On request
Tier 4	On request
Colour Washout	\$100.00/load

COLOUR PRICES:

Please refer to Dufferin Concrete's colour brochure for your colour selection.

Additional custom colours are available upon request.

Dufferin Concrete prides itself on the quality and workmanship of our colour program. Every attempt is made to ensure that the colour you choose matches as closely as possible to the sample, however, due to the varying natural pigmentations in the aggregates we strongly recommend a colour test pour be completed prior to doing the final concrete pour.

Specialty Additives

- Integral Hardener - used to increase concrete's resistance to abrasion and erosion.
- Integral Waterproofing - helps in achieving watertight concrete structures.

To find out more about all our additives, call one of our Sales/Technical representatives to understand their design suitability, placing, finishing, curing, protection and long-term performance expectations. Some products result in our concrete mixes becoming prescriptive, as per CSA A23.1-19 Table 5.

Additional Service Charges

ALL CONCRETE PRICING IS SUBJECT TO AN ANNUAL INCREASE ON JANUARY 1ST. PLEASE CONTACT YOUR SALES REPRESENTATIVES FOR DETAILS.

PUMP MIXES

- Standard Mixes - 5" Pump Line Required \$10.00/m³
- Pump Mixes for 2" Pump Lines On Request

SMALL LOAD CHARGES	1.00m ³ - 3.00m ³	\$350.00/load
	3.25m ³ - 4.00m ³	\$200.00/load
	4.25m ³ - 5.00m ³	\$125.00/load

All concrete mixes require 3m³ minimum in order to ensure a quality product.

SECOND BALANCE LOAD CHARGE

All concrete orders 8m³ and over get one free balance.

RESTRICTED AXLE WEIGHT SEASON CHARGES

When Highway Traffic Act restrictions are in effect a Restricted Load Charge will apply \$350.00/load

ENVIRONMENTAL FEE (ALL ORDERS)	\$5.00/m ³
--------------------------------	-----------------------

WASH WATER HANDLING FEE (ALL ORDERS)	\$2.50/m ³
--------------------------------------	-----------------------

WINTER HANDLING - NOVEMBER 1 TO APRIL 15	\$20.00/m ³
------------------------------------------	------------------------

CARBON TAX + TOARC FEE (ALL ORDERS)	\$2.50/m ³
-------------------------------------	-----------------------

SITE SUPERVISION AND TESTING CHARGE

- Minimum load size 5m³ required \$20.00/m³

DELIVERY HOURS

Regular business hours 7 a.m. to 5 p.m., Monday through Friday. For completion of any delivery started:

- After 5 p.m. and before 9 p.m. \$40.00/m³
- After 9 p.m. and before 7 a.m. \$70.00/m³
- Saturday Delivery \$25.00/m³

Plant opening charge may apply

WAITING TIME

- Sixty (60) minutes per 9m³ load allowed for unloading unless otherwise specified
- Additional time - \$6.00/min

PLANT START UP CHARGE	\$5,000.00
-----------------------	------------

POUR CANCELLATION CHARGE

A minimum of \$1,000.00 will apply to all pour cancellations. The \$1,000.00 includes expenses incurred for the first ready-mix truck, batcher and loader operator. For each additional ready-mix truck an additional \$200.00 charge will apply. Notice of pour cancellation must be received 24 hours in advance prior to the pour.

MATURITY INFIELD STRENGTH DETERMINATION

- Early stripping On request

RETURNED CONCRETE	\$30.00/m ³
-------------------	------------------------

VARIABLE FUEL SURCHARGE (ALL ORDERS)

All concrete will be charged a Variable Fuel Surcharge, based on the average quarterly rack rate, which will be posted on the Dufferin Concrete Website.

The fuel surcharge will be adjusted the first day of every quarter, based on the previous quarter's average rack rate. The surcharge will be adjusted as outlined in the table below.

Rack Rate	Fuel Surcharge
<\$0.67/L	\$0.00/m ³
\$0.67/L to <\$0.77/L	\$1.00/m ³
\$0.77/L to <\$0.87/L	\$2.00/m ³
\$0.87/L to <\$0.97/L	\$3.00/m ³
\$0.97/L to <\$1.07/L	\$4.00/m ³

DELIVERY NOTES

It is the contractor's responsibility to provide safe access to enter and exit the site, as well as provide a lit staging area and trained flagman for all trucks. Dufferin Concrete has experienced and trained personnel to assist our customers to ensure these requirements are met in a safe and timely manner, please contact us if you require these additional services.

Dufferin Concrete prides itself on delivering quality products and services however, variables beyond our control such as weather, traffic or utility outages can affect our services.

Macro Structural Fibers

Replace Welded Wire Mesh, Steel Fibers & Rebar

TUF-STRAND STRUCTURAL FIBERS

- | <ul style="list-style-type: none"> • 2.4 kg/m³ Dosage based on typical 6 by 6 (six gauge mesh) <ul style="list-style-type: none"> ◦ Replaces welded wire mesh on metal decking ◦ Two hour Fire rating, meets UL & ULC. | <table border="0"> <tr> <th>Thickness</th> <th>Price Est.*</th> </tr> <tr> <td>3 in.</td> <td>\$0.27/sq. ft.</td> </tr> <tr> <td>3.5 in.</td> <td>\$0.32/sq. ft.</td> </tr> <tr> <td>4 in.</td> <td>\$0.36/sq. ft.</td> </tr> </table> | Thickness | Price Est.* | 3 in. | \$0.27/sq. ft. | 3.5 in. | \$0.32/sq. ft. | 4 in. | \$0.36/sq. ft. |
|-------------------------------------------------------------------------------------------------------------------------------------------------------------------------------------------------------------------------------------------------------------------------------------------|----------------------------------------------------------------------------------------------------------------------------------------------------------------------------------------------------------------------------------------|-----------|-------------|-------|----------------|---------|----------------|-------|----------------|
| Thickness | Price Est.* | | | | | | | | |
| 3 in. | \$0.27/sq. ft. | | | | | | | | |
| 3.5 in. | \$0.32/sq. ft. | | | | | | | | |
| 4 in. | \$0.36/sq. ft. | | | | | | | | |
| <ul style="list-style-type: none"> • Steel Fiber and rebar replacement – Reviewed and engineered to meet loading requirements. • Plasticizing agent recommended On request | | | | | | | | | |

MAXTEN STRUCTURAL FIBERS

- | <ul style="list-style-type: none"> • 1.8 kg/m³ Dosage based on typical 6 by 6 (six gauge mesh) <ul style="list-style-type: none"> ◦ Replaces welded wire mesh for SOG | <table border="0"> <tr> <th>Thickness</th> <th>Price Est.*</th> </tr> <tr> <td>3 in.</td> <td>\$0.19/sq. ft.</td> </tr> <tr> <td>4 in.</td> <td>\$0.25/sq. ft.</td> </tr> <tr> <td>5 in.</td> <td>\$0.31/sq. ft.</td> </tr> <tr> <td>6 in.</td> <td>\$0.37/sq. ft.</td> </tr> </table> | Thickness | Price Est.* | 3 in. | \$0.19/sq. ft. | 4 in. | \$0.25/sq. ft. | 5 in. | \$0.31/sq. ft. | 6 in. | \$0.37/sq. ft. |
|-----------------------------------------------------------------------------------------------------------------------------------------------------------------------------------------------------------------------------|----------------------------------------------------------------------------------------------------------------------------------------------------------------------------------------------------------------------------------------------------------------------------------------|-----------|-------------|-------|----------------|-------|----------------|-------|----------------|-------|----------------|
| Thickness | Price Est.* | | | | | | | | | | |
| 3 in. | \$0.19/sq. ft. | | | | | | | | | | |
| 4 in. | \$0.25/sq. ft. | | | | | | | | | | |
| 5 in. | \$0.31/sq. ft. | | | | | | | | | | |
| 6 in. | \$0.37/sq. ft. | | | | | | | | | | |

*Note, purchases of fibers are billed on a \$/m³ basis.

Micro Fibers

POLYPROPYLENE FIBERS

- Plastic shrinkage reduction \$18.00/m³

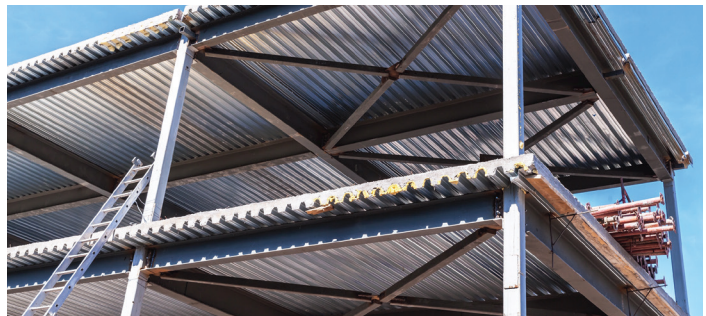


BENEFITS OF FIBER-ENFORCED CONCRETE

- Ease of placement and finishing - delivered in the concrete, no extra orders to place
- Accelerated concrete placement time - reduced project time
- Equivalent strength to steel - better control of plastic shrinkage, cracking and reduced segregation
- Cost effective replacement for welded wire mesh (WWM)
- No storage needed for fibers or other reinforcing materials
- Safety - no handling and tripping hazards (as with WWM)

Steel Fibers

- | | |
|--------------------------------------------|------------|
| • Steel fiber supplied | On request |
| • Steel fiber addition fee (by contractor) | \$30/load |



APPLICATIONS

- Industrial floors
- Residential applications (driveway, garage, porch, walkway, basement floor)
- Composite steel deck
- Shotcrete applications
- Agricultural applications
- Roads, parking lots, slabs

Concrete Business Solutions

At Dufferin Concrete, we strive to continuously improve our business and offer solutions that add value for our customers. With our suite of paperless solutions we will help you run your business more efficiently, in a sustainable way.

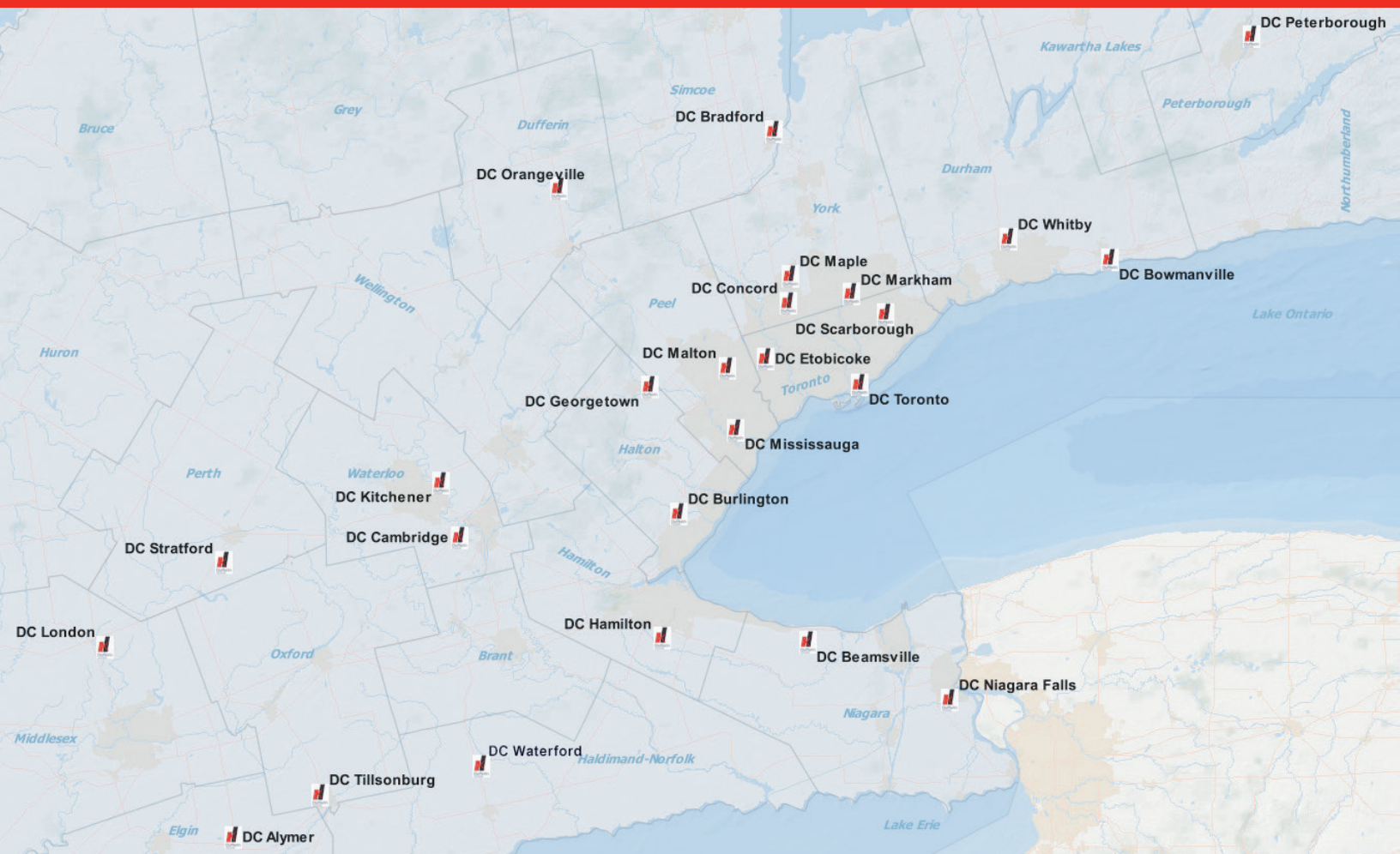
From tracking your delivery and signing your tickets to reconciling your invoices, our online platforms are easily accessible through all devices. We invest time into providing sustainable tools and resources you need to run your business efficiently.

E-Ticketing is our new solution that will eliminate paper, lost tickets and ticket storage. Tickets are emailed directly to your job site and the back office as needed, improving the speed and accuracy of your invoicing process and eliminating the delay and hassle of paper tickets. With e-ticketing, all tickets are now available online via our Customer Portal only two days after concrete delivery.

Visit www.dufferinconcrete.ca for more information, or contact your Sales Representative to register for our paperless solutions.

We are more
than just concrete.





DUFFERIN CONCRETE

2300 Steeles Avenue West, 4th floor
Concord, Ontario L4K 5X6
www.dufferinconcrete.ca

CORPORATE OFFICE

CRH Canada Group Inc.
2300 Steeles Avenue West, 4th floor
Concord, Ontario L4K 5X6
Tel.: 905.761.7100
Fax: 905.761.7200
www.crhcanada.com

DUFFERIN CONCRETE PLANT LOCATIONS

East Region

Central Dispatch
Tel.: 1-877-655-3922

Plant Locations

Bowmanville,
Peterborough,
Whitby

Metro region

Central Dispatch
Tel.: 1-888-231-9444

Plant Locations

Concord, Etobicoke,
Georgetown, Malton, Maple,
Markham, Mississauga,
Scarborough, Toronto

North Region

Central Dispatch
Tel.: 1-833-303-9817

Plant Locations

Bradford, Orangeville

Peninsula Region

Central Dispatch
Tel.: 1-866-436-8171

Plant Locations

Beamsville, Burlington,
Hamilton, Niagara Falls

Southwest Region

Central Dispatch
Tel.: 1-888-745-1151

Plant Locations

Aylmer, Cambridge, Kitchener,
London, Waterford, Stratford,
Tillsonburg