

**EDIC  
INNOVATION IN  
CARPET AND  
FLOOR CARE**



## **EDIC... ON THE MOVE**

Our company was founded in 1975 with the goal of designing and developing the most innovative, productive and durable carpet care equipment and cleaning systems on the market. That vision holds true today as EDIC continues to expand with new product lines, patented innovations, accessories, and the support of a knowledgeable staff trained first and foremost in customer service. We thank you for your interest in our products and look forward to a successful new or continuing business relationship with you.

For further information or to locate your nearest EDIC authorized distributor, contact:

EDIC  
1753 Blake Avenue  
Los Angeles, CA 90031-1006  
USA

Telephone:	(323) 660-1635
Toll-free:	(800) 338-3342
Fax:	(323) 667-0144
Email:	<a href="mailto:sales@edic-usa.com">sales@edic-usa.com</a>
Website:	<a href="http://www.edic-usa.com">www.edic-usa.com</a>

# TABLE OF CONTENTS

## **NEW PRODUCTS**

Endeavor	4
Revolution	5

## **Portable Extraction Cleaning Machines**

### **Self-Contained Extractors**

FiveStar	6
Comet	7
Polaris	8
Supernova	10

### **Box Extractors**

Bravo Spotter	11
Galaxy	12
Galaxy Pro	13
Galaxy 5	14

### **Extraction Machine Accessories**

Powermate	15
Wands, Carpet Tools & Attachments	16
Aviator Axial Fan	18
Aqua Dri Carpet Dryer	19
External Heater/Circuit Locator	20

### **Auto Detailing Equipment & Accessories**

Galaxy Automotive	21
Galaxy 5	22
Bravo Spotter/Aqua Dri	23
Auto Accessories/Dynamo Wet/Dry Vacuum	24

## **Vacuums**

### **Backpack Vacuums**

Atlas 6 & 10 Quart	25
Backpack Accessories & Tools	26

### **Canister Vacuums - Wet/Dry**

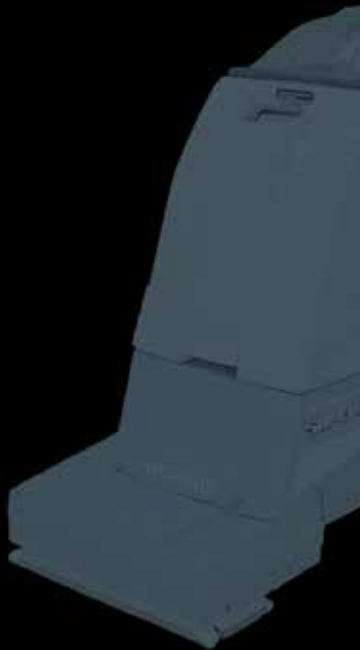
Dynamo 5 & 8 Gallon	28
Dynamo 12 & 20 Gallon	29

### **Floor Machines and Accessories**

HD Low Speed	30
Low Speed	31
Burnishers	32
Dual Speed	33
Floor Machines Accessories	34

### **Automatic Scrubbers/Grout Restoration**

Pilot	35
-------	----



# MULTI-PURPOSE EXTRACTOR

## HARD SURFACE RESTORATION



## CARPET RESTORATION



## SPECIFICATIONS

	9000I-HS	9000I-500
In-line heater	Optional 2000 Watt	Optional 2000 Watt
Pump	Adjustable, 70-1100 PSI	Adjustable, 50-500 PSI
Vacuum	8.4" Diameter Infinity Design	8.4" Diameter Infinity Design
Water Lift	147"	147"
Air Flow	142 CFM	142 CFM
Air Watts	673	673
Hard Surface Restoration	☑	Maintenance Only
Touch-Free Restroom Cleaning	Optional	Optional
Auto-fill / Auto-dump	☑	Optional
Wand / Tool Caddy	☑	☑
5 gallon bucket holder	☑	☑
Handle casters, molded dolly style skid rails	☑	☑
Power Cord	Dual, GFCI, PowerConn Twistlock, 25' detachable	Single, GFCI, PowerConn Twistlock, 25' detachable, Dual with optional heater
Weight	174 lbs	130 lbs
Rear Wheels	12" non-marking	12" non-marking
Front Casters	Dual-wheel casters	Dual-wheel casters
Power Prime and Pressure Relief Valve	☑	☑
Low Moisture Carpet Cleaning	☑	☑
Smart Circuit Locator	☑	☑
Capacity	13 Gallons	13 Gallons

# ENDEAVOR (Patents Pending)

No matter what the surface type is, or where it is located, it can be easily reached, cleaned and restored by the new Endeavor multi-surface cleaner from EDIC.

Finally there is one compact and powerful solution for heated carpet & upholstery extraction, hard surface restoration, and touch-free restroom cleaning.

With a unique upright, ergonomic design for easy transport, durable construction, and user-friendly operating features, the Endeavor is the perfect cleaning tool tailored to fit each unique cleaning process.

Productivity is key in today's competitive world, the Endeavor provides your facility the ultimate cleaning tool to reach your maintenance goals quickly and effectively.

## FEATURES

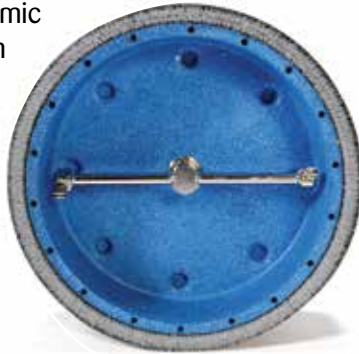
- One machine, three restorative functions
- In-line heat and adjustable cleaning pressure: provides cleaning power and versatility for upholstery, carpet and hard surface cleaning
- Powerful 8.4" Infinity Vacuum: unmatched water recovery and quicker dry times.
- Auto-fill/Auto-dump: uninterrupted cleaning improves productivity
- Ergonomic dolly style design, large rear wheels, handle casters, built-in skid rails, wand and tool storage: easy to maneuver, load, unload and transport by one person
- Fan cooled motor compartment: provides longevity to electrical motors and critical components
- Circuit locator: prevents blown fuses and tripped breakers
- Large recovery tank and solution tank opening: easy access for cleaning the recovery tank and filling the solution tank
- Convenient front mounted controls on top: no stooping or bending to operate

## OPTIONAL ACCESSORIES

- |              |   |
|--------------|---|
| 1200REV      | Revolution 12" hard surface tool  |
| 2540AC-HP    | 25' sol/vac hose set  |
| 1034-11001FB | 12" dual-jet SS carpet wand   |
| 1039-9502FB  | 4" SS detailer tool   |
| 9034ACK      | Touch-Free bathroom cleaning kit, comes with squeegee wand and spray gun tool |
| 990RS        | Chemical feed system for Touch-Free restroom cleaning                         |
| 700REV       | Revolution 7" hand held hard surface tool                                     |

# REVOLUTION

The Revolution is a tile and grout-cleaning tool that provides remarkably smooth operation, gliding easily over the floor for less operator fatigue. It has a lightweight design — only 13 lbs! — yet it's engineered for outstanding durability. It works on uneven surfaces like grouted tile or smooth surfaces such as concrete, and can be used with truckmounts or portables. The Revolution's handle folds to 180 degrees so you can clean under a counter or overhang as low as 6 inches. For exceptionally convenient operation, it has a 90-degree inlet swivel that rotates 360 degrees, which always keeps the hose out of the way even when you're cleaning alongside a wall. It's also loaded with innovative features designed to help you clean more quickly and efficiently, including: An inline filter that catches dirt before it has a chance to clog tips — it works great even with machines that don't have good filtration. An easy-pull trigger with safety. Recovery hoses located in the center of the head for better suction, allowing you to clean along edges without hitting hoses. Comfortable and ergonomic hand grips. A conveniently located vacuum relief mounted in the handle so you can easily adjust air flow without bending over. A stainless steel handle for long-term durability. A high quality ceramic swivel that's repairable. And a T-style handle that allows side- to-side as well as front-to-back operation.



## FEATURES

- 90-degree inlet swivel rotates 360 degrees – always keeping the hose out of the way even when cleaning alongside a wall.
- Comfortable and ergonomic hand grips.
- Inline filter catches dirt before it has a chance to clog tips – works great even with machines that don't have good filtration.
- Easy pull trigger with safety.
- Conveniently located vacuum relief is mounted in the handle so you can easily adjust air flow without bending over.
- Stainless steel handle.
- Recovery hoses located in the center of the head for better suction – allowing you to clean along edges without hitting hoses.
- Highest quality ceramic swivel is repairable.



## SPECIFICATIONS

Diameter	12"
Repairable Swivel	Yes
Maximum PSI	2500
Intake Diameter	1.5"
Trigger Safety	Yes
Weight	13 Lbs.

## MODEL

1200REV 12" revolution hard surface tool, repairable ceramic swivel, 1.5"



## FIVESTAR

The amazing FiveStar is a small, self-contained unit with powerful brush agitation to clean carpets, hard floors and grouted tile. It weighs only 40 pounds so it's light enough for anyone to handle, plus the compact body design and fold-down handle make it a breeze to transport and store. Remove two screws and the machine opens like a clamshell for fast service. The FiveStar is small enough to clean tight spaces and corners yet powerful enough to perform well in any commercial setting. A revolutionary bladder design allows you to fill and empty out of the same bucket and eliminates the need to pour solution into the machine. Simply fill the bucket, set it on the machine, close the lid and begin cleaning. No more spills or mess!



Fold-down handle for easy storage and transport



### SPECIFICATIONS

Solution Tank	3 gallon
Lift-off Recovery Tank	3 gallon
Solution Pressure	50 psi
Vacuum Motor	112 CFM, 2 HP
Water Lift	107"
Brush Motor	1/6 HP
Brush Speed	2,500 RPM
Brush Style	Chevron design, 4 rows
Brush Bearings	Sealed, stainless steel ball bearings
Cleaning Width	12 inches
Tank Construction	Polyethylene
Wheels	7 inches, non-marking
Power Cord	25 ft.
Dimensions	24"H x 23"L x 12"W
Weight	40 lbs.
Shipping Weight	53 lbs.
Ship Dimensions	28"H x 26"L x 15"W
Electrical Draw	12 amps

### FEATURES

- Patented self-adjusting, self-leveling brush and vacuum shoe for easy cleaning of all carpet lengths and uneven floors plus longer brush life.
- Full complement of optional accessories attaches to back of unit for cleaning upholstery, stairs, etc.
- Handle adjusts to operator height and folds down for easy storage.
- Patented lift-off bucket with bladder makes filling and emptying incredibly easy.
- See-through recovery dome.
- Side extension for cleaning right to baseboards.
- Upright-mounted motor and intercooler system combine for long-lasting operation.

### OPTIONAL ACCESSORIES

- 330ACS 10" Single-jet stainless steel wand
- 357AC Upholstery tool, 8' vacuum and solution hose assembly and hose bag
- 357AC-CM Upholstery tool, 15' vacuum and solution hose assembly and hose bag
- 341AC 8' vacuum and solution hose assembly
- 341AC-15 15' vacuum and solution hose assembly

For our full line of optional accessories (1½" diameter), see pages 16-17.

### MODELS

- 401TR FiveStar, carpet cleaner only
- 411TR FiveStar, all floor unit—carpet, hard floor and grouted tile

## COMET

The Comet is a small, economical, self-contained unit with powerful brush agitation to clean carpets. It weighs only 40 pounds so it's light enough for anyone to handle, plus the compact body design and fold-down handle make it a breeze to transport and store. Remove two screws and the machine opens like a clamshell for fast service. The Comet is small enough to clean in tight spaces and corners yet powerful enough to perform well in any commercial setting. A revolutionary bladder design eliminates the need to pour solution into the machine. Simply fill the bucket, set it on the machine, close the lid and begin cleaning.

No more spills or mess! The single on-off switch is designed for operation simplicity.

### FEATURES

- Patented self-adjusting, self-leveling brush and vacuum shoe for easy cleaning of all carpet lengths and uneven floors plus longer brush life.
- Full complement of optional accessories attaches to the back of unit for cleaning upholstery, stairs, etc.
- Handle adjusts to operator height and folds down for compact storage.
- Patented lift-off bucket with bladder makes filling and emptying incredibly easy.
- See-through recovery dome.
- Side extension for cleaning right to baseboards.
- Upright mounted motor and intercooler system combine for long-lasting operation.

### OPTIONAL ACCESSORIES

- 330ACS 10" Single-jet stainless steel wand
- 357AC Upholstery tool, 8' vacuum and solution hose assembly and hose bag
- 357AC-CM Upholstery tool, 15' vacuum and solution hose assembly and hose bag
- 341AC 8' vacuum and solution hose assembly
- 341AC-15 15' vacuum and solution hose assembly

For our full line of optional accessories (1½" diameter), see pages 16-17

### MODEL

- 419TR Comet carpet cleaner



### SPECIFICATIONS

Solution Tank	3 gallon
Lift-off Recovery Tank	3 gallon
Solution Pressure	50 psi
Vacuum Motor	92 CFM
Water Lift	85"
Brush Motor	1/12 HP
Brush Speed	2500 RPM
Brush Style	Chevron design, 3 rows
Brush Bearings	Sealed, stainless steel ball bearings
Cleaning Width	12 inches
Tank Construction	Polyethylene
Wheels	7 inches, non-marking
Power Cord	25 ft.
Dimensions	24"H x 23"L x 12"W
Weight	40 lbs.
Shipping Weight	53 lbs.
Ship Dimensions	28"H x 26"L x 15"W
Electrical Draw	12 amps

## POLARIS 500PS, 700PS, 701PS



These self-contained workhorses combine remarkable ease of operation with unbeatable performance and portability to deliver consistent results in light speed!

The Polaris is big enough to tackle large rooms and hallways and is available with a full complement of accessories giving it maximum versatility to clean upholstery, stairs and other hard to reach places. A lift-off recovery bucket makes emptying quick and easy without the need for a drain hose. Special features including the patented 4-wheel design, adjustable handle and light-weight construction allow easy transportation and unparalleled balance and maneuverability.



Clamshell design provides easy internal access for fast service

### SPECIFICATIONS

Solution Tank	5 gallon/7 gallon
Solution Pressure	50 psi (500 & 700) 100 psi (701)
Vac Motor	112 CFM, 2 HP, 136" lift
Brush Motor	4200 RPM, 1/6 HP
Brush Speed	2100 RPM
Brush Style	Chevron design
Brush Bearings	Sealed, stainless steel ball bearings
Cleaning Width	14/17 inches
Tank Construction	Polyethylene
Wheels	7 inches, non-marking
Power Cord	25 ft. (500) 50 ft. detachable (700/701)
Dimensions	
500PS	39"H x 30"L x 14"W
700/701PS	39"H x 30"L x 17"W
Weight	68/78 lbs.
Shipping Weight	95/103 lbs.
Ship Dimensions	42"H x 34"L x 21"W
Electrical Draw	14/14/15 amps

### FEATURES

- Patented 4-wheel design makes turning in tight places easy and balances total weight, even full of water, for easy maneuvering.
- Lift-off recovery bucket—no drain hose.
- Patented self-adjusting, self-leveling brush and vacuum shoe combine for superior cleaning of all carpet lengths and uneven floors.
- Fully adjustable handle for greater operator ease, increased leverage on stairs and over curbs plus compact storage.
- Side extension for cleaning right to baseboards (700/701).
- Upright-mounted vacuum plus intercooler system extends motor life.
- See-through recovery dome.

### OPTIONAL ACCESSORIES

1204ACH	Powermate—12" wide power brush
D02359-1	Adapter to connect standard 1½" diameter hose assemblies
358AC	Upholstery cleaning kit—upholstery tool, vacuum and solution hose assembly and hose bag
323ACH	Prespray wand
1033-11006FB	Single-jet wand
1034-11003FB	Dual-jet wand
1041AC	15 ft. vac and solution hose assembly with adapter plate
2541AC	25 ft. vac and solution hose assembly with adapter plate

For our full line of optional accessories (1½" diameter), see pages 15-17.

### MODELS

500PS	5-gallon Polaris/14" wide/50 psi
700PS	7-gallon Polaris/17" wide/50 psi
701PS	7-gallon Polaris/17" wide/100 psi



## POLARIS 801PS, 1201PS

For wide open spaces where productivity is the bottom line, the 800 and 1200 models clean quickly and efficiently. These larger self-contained units come equipped with dual vacuums to more thoroughly clean and dry carpets. The Polaris has a built-in silencer so you can clean without interrupting the workflow. Top quality construction, remarkable



Quick-fit accessories

ease of operation and versatility combine for a machine that consistently outperforms the competition. Dual lift-off recovery buckets with no hose to detach allow easy emptying. Maintenance is a breeze as well—just remove two screws and open like a clamshell for quick internal access.



***New optional valve allows you to adjust the performance of the machine for regular maintenance or heavy-duty restorative cleaning.***

### FEATURES

- Large wheels, adjustable handle and lightweight construction team up for easy handling and storage.
- Optional accessories quickly attach to the rear of machine for cleaning stairs, upholstery, etc.
- Patented dual lift-off recovery buckets provide quick and convenient emptying.
- Patented four-wheel design for balance and reduced turning radius.
- High speed brush motor and brush guarantee powerful agitation to release deeply embedded soil and grit, extending carpet life.
- Patented brush system utilizes fully sealed stainless steel ball bearings for years of trouble-free operation.

### OPTIONAL ACCESSORIES

1204ACH	Powermate—12" wide power brush
D02359-1	Adapter to connect standard 1½" diameter hose assemblies
358AC	Upholstery cleaning kit—upholstery tool, vacuum and solution hose assembly and hose bag
323ACH	Prespray wand
1033-11006FB	Single-jet wand
1034-11003FB	Dual-jet wand
1041AC	15 ft. vac and solution hose assembly with adapter plate
2541AC	25 ft. vac and solution hose assembly with adapter plate

For our full line of optional accessories (1½" diameter), see pages 15-17.

### MODELS

801PS	8-gallon Polaris/19" wide/100 psi
1201PS	12-gallon Polaris/19" wide/100 psi

### SPECIFICATIONS

Solution Tank	8/12 gallon
Solution Pressure	100 psi
Vac Motors	Dual, 2-stage bypass, 200 CFM, 3.5 HP
Brush Motor	4200 RPM, 1/6 HP
Brush Speed	2100 RPM
Brush Style	Chevron design
Brush Bearings	Sealed, stainless steel ball bearings
Cleaning Width	19 inches
Tank Construction	Polyethylene
Wheels	8 inches, non-marking
Power Cord	50 ft. detachable
Dimensions	
801PS	38"H x 48"L x 19"W
1201PS	38"H x 48"L x 19"W
Weight	114/120 lbs.
Shipping Weight	131/136 lbs.
Ship Dimensions	42"H x 45"L x 25"W
Electrical Draw	15/15 amps



## SUPERNOVA

There is literally nothing like the Supernova series—remarkable self-contained extractors that clean in both forward and reverse! The patented two-way system provides unparalleled productivity in any setting—clean up to 4,000 square feet in one hour. All models operate forward in hallways and other open areas, but with a simple pull of a lever instantly change to reverse to clean corners and other tight areas for a dramatic reduction in labor costs. A specially designed vacuum head allows cleaning on hard floors in addition to carpets, without any cumbersome attachments. Just walk off carpet on to hard floors—it's that simple. Dual vacuum motors and a 19" cleaning width on the 800 and 1200 models combine with a host of other exclusive features to guarantee unrivaled performance.



Optional accessories for versatile cleaning

### SPECIFICATIONS

Solution Tank	8/12 gallon
Solution Pressure	50 psi
Vacuum Motor 700	112 CFM, 2 HP
Vac Motors 800/1200	Dual, 2-stage bypass, 200 CFM, 3.5 HP
Brush Motor	4200 RPM, 1/6 HP
Brush Speed	2100 RPM
Brush Style	Chevron design
Brush Bearings	Sealed, stainless steel ball bearings
Cleaning Width	19 inches
Tank Construction	Polyethylene
Wheels	8 inches, non-marking
Power Cord	50 ft. detachable
Dimensions	
800/1200	38"H x 39"L x 19.25"W
Weight	87/113/123 lbs.
Shipping Weight	136/146 lbs.
Ship Dimensions	
800/1200	42"H x 45"L x 25"W
Electrical Draw	15 amps

### FEATURES

- Two-way system for forward and reverse operation.
- Patented self-adjusting, self-leveling brush and vacuum shoes for easy cleaning of all carpet lengths and uneven floors plus longer brush life.
- Exclusive "clamshell" body provides fast and easy internal access for quick servicing.
- Patented lift-off recovery buckets—no drain hose.
- Fully adjustable handle.
- Patented 4-wheel design gives extraordinary balance and reduces turning radius for easy maneuverability in tight areas.
- Side extension for cleaning right to baseboards.
- Dual spray jets on both sides of the brush suspend the soil for increased pick up and faster drying.

### OPTIONAL ACCESSORIES

1204ACH	Powermate—12" wide power brush
D02359-1	Adapter to connect standard 1½" diameter hose assemblies
358AC	Upholstery cleaning kit: upholstery tool, vacuum and solution hose assembly and hose bag
323ACH	Prespray wand
1033-11003FB	Single-jet wand
1034-110015FB	Dual-jet wand
334ACH	Hard floor squeegee wand
1041AC	15 ft. vac and solution hose assembly with adapter plate

For our full line of optional accessories (1½" diameter), see pages 15-17.

### MODELS

800PSN	8-gallon Supernova, dual vacuum
1200PSN	12-gallon Supernova, dual vacuum

## BRAVO SPOTTER

### AVAILABLE WITH HEAT!

The new Bravo spotter delivers incredible efficiency and power in a deceptively small package. No set up time—simply unload and begin cleaning immediately. Compact size and maneuverability make it ideal for spotting and quick cleaning of small carpeted areas, upholstery and auto interiors. Operators will appreciate the specially designed molded-in holders that carry spray bottles, leaving the hands free. Over time it's a winner too, thanks to the upright-mounted vacuum motor and oversized recovery tank that combine to insure longer motor life.



Porthole allows easy access to recovery tank



Operators will appreciate the specially designed molded-in holders that carry spray bottles, leaving the hands free. Over time it's a winner too, thanks to the upright-mounted vacuum motor and oversized recovery tank that combine to insure longer motor life.



### FEATURES

- Optional in-tank heater delivers 150-degree heat. (339MH-HT)
- Unique molded-in holders carry spray bottles for greater ease.
- Large six-inch wheels and an optional transport handle plus cord wrap assembly make it a snap to wheel about.
- Quickly opens up for easy servicing and repair.
- Large porthole on recovery tank allows easy access for odor-free maintenance.

### OPTIONAL ACCESSORIES

330ACS	10" single-jet wand
334ACH	10" hard-floor squeegee wand
1204ACH	Powermate – 12" wide power brush
323ACH	Prespray wand
342AC	8-ft. hose assembly with quick connects
343AC	8-ft. high pressure hose assembly with quick connects
1040AC	15-ft. hose assembly
1039-9502FB	Stainless steel upholstery tool
1037AC	Upholstery tool, durable plastic head
839ACK	8 ft. hose with 1039-9502FB

For our full line of optional accessories (1½" diameter), see pages 15-17.

### MODELS

- 300MH Deluxe model with high performance motor (tools and hose set sold separately)
- 339MH-HT Bravo with heat, stainless steel tool and transport handle

### SPECIFICATIONS

Solution Tank	3 gallon
Recovery Tank	3.5 gallon
Solution Pressure	55 psi
Vacuum Motor	2 stage, bypass
Water Lift	106"
Handle	Adjustable, 22-37"
Wheels	6 inches
Power Cord	25 ft.
Optional Heater	1500 watts, stainless steel
Recommended Hose Assembly	8 ft.
Optional Economy Tool	Plastic
Optional Deluxe Tool	Long nose, stainless steel handle
Weight	19 lbs.
Shipping Weight	27 lbs.
Dimensions	20.5"H x 15"L x 13"W
Ship Dimensions	23"H x 18"L x 15.5"W
Electrical Draw	
300MH	12 amps
339MH-HT	15 amps



## GALAXY

HEAT READY!



Introducing our exclusive line-up of Galaxy carpet extractors that now comes “heat-ready.” Life’s little decisions just got a whole lot easier! You can purchase any Galaxy without heat and if you change your mind, no problem. Simply order our external heater, and away you go. Placing the heater on the outside also insures that everything on the inside of the machine runs cooler, extending the life of the vacuum and pump motors. The stainless steel heater tank is guaranteed for life. If a repair is necessary, simply lift the heater off the back of the machine. Meantime, you can continue to use the unit without heat.

From a seller’s standpoint, there’s no need to purchase both heated and non-heated units—just stock machines and heaters. Your customers can start with a non-heated model then later upgrade to heat without having to purchase a whole new machine.



### SPECIFICATIONS

Solution Tank	12 gallon
Recovery Tank	11 gallon
Solution Pressure	100/200/500 psi
Vacuum Motors	Dual high-performance 2-stage and 3-stage
Water Lift	150”/185”/210”
Tank Construction	Polyethylene
Baseplate	½” aluminum
Rear Wheels	10 inches, non-marking
Casters	4 inches
Power Cord	50 ft. detachable
Hose Assembly	25 ft.
Optional Wand	Deluxe dual-jet S-bend stainless steel
Dimensions	35”H x 31”L x 18”W
Weight	78/80/80/84/84/89 lbs.
Shipping Weight	94/96/96/100/100/105 lbs.
Ship Dimensions	36.5”H x 31.5”L x 19”W
Electrical Draw	13.5/13.5/14.1/14.2/15.4/17.1 amps

### FEATURES (Galaxy and Galaxy Pro)

- Exclusive heat-ready system offers the ultimate in versatility.
- External heater makes repairs a snap and keeps heat away from the motor compartment.
- New “granite look” projects an image of professionalism and keeps the machine looking brand new.
- Upright-mounted motors along with a special intercooler guarantee long life and durability.
- Standard 5-gallon bucket fits under drain valve for easy emptying.
- Opens quickly like a clamshell for easy servicing.
- Top-mounted switches.
- Sealed motor cavity insures that spills on the outside stay out.

### MODELS

2000SX	Dual 2-stage vacs, 150” lift, 100 psi, not heat ready
2000SX-HR	Dual 2-stage vacs, 150” lift, 100 psi
2000IX-HR	Dual 3-stage vacs, 185” lift, 200 psi (non-adj)
2000JX-HR	Dual 2-stage vacs, 150” lift, 200 psi (adj)
2000KX-HR*	Dual 2-stage vacs, 185” lift, 200 psi (adj)
2000CX-HR*	Dual 3-stage vacs, 185” lift, 500 psi (adj)

\*20-amp circuit required.



# **GALAXY PRO**

**HEAT READY!**

This is the big brother to our popular Galaxy series with a large 17-gallon capacity housed within an extremely portable unit that's affordably priced. The "heat-ready" Galaxy Pro includes all the great features of our standard Galaxy model with the added benefits of an optional adjustable 500 psi and the ability to clean extremely large areas quickly and professionally. Versatility is the name of the game with the heat-ready system. You can purchase the machine without heat and later decide to add heat without having to buy a new unit. The external heater makes repairs a snap, and it keeps the heat away from the internal components, extending the life of the machine. All units are available "heat ready."



Optional external heater for Galaxy and Galaxy Pro



## **OPTIONAL ACCESSORIES (Galaxy and Galaxy Pro)**

- 605HR Heater kit (see page 18 for more details)
- 1033-11003FB Single-jet stainless steel wand (specify psi)
- 1034-110015FB Dual-jet stainless steel wand (for 100-250 psi machines)
- 1034-11001FB Dual-jet stainless steel wand (for 500 psi machines)
- 334ACH 10" hard floor squeegee wand
- 1039-9502FB Stainless steel detailer tool
- 1204ACH Powermate—12" wide power brush (specify psi)
- 1800AC-200 18" Powermate, up to 500 psi
- 00206-1A Receptacle for power wand (factory installed)
- 988CS Circuit locator
- 2540AC-HP 25' vacuum and high pressure solution hose assembly with quick connects

For our full line of optional accessories (1½" diameter), see pages 15-17.

## **MODELS**

- 2700IX-HR Dual 3-stage vacs, 185" lift, 200 psi
- 2700JX-HR Dual 2-stage vacs, 150" lift, 200 psi (adj)
- 2700CX-HR\* Dual 3-stage vacs, 185" lift, 500 psi (adj)
- 2700FX-HR Dual 3-stage vacs, 210" lift, 500 psi (adj)  
dual power cords, circuit locator included

\*20-amp circuit required.

## **SPECIFICATIONS**

Solution Tank	17 gallon
Recovery Tank	15 gallon
Solution Pressure	150/200/500 psi
Vacuum Motor	Dual high-performance 2-stage and 3-stage
Water Lift	150"/185"/210"
Tank Construction	Polyethylene
Baseplate	1/4" aluminum
Rear Wheels	10 inches, non-marking
Casters	4 inches
Power Cord	50 ft. detachable
Dimensions	38"H x 31"L x 20"W
Weight	95/99/104/104lbs.
Shipping Weight	111/115/120/120 lbs.
Ship Dimensions	40.5"H x 39"L x 21"W
Electrical Draw	14.1/14.2/17.1 amps
Dual Cord (FX)	14.7/11.8 amps per cord

## GALAXY 5 NOW AVAILABLE HEAT READY!

One look at our new compact addition to the Galaxy series and you'll realize that it is possible to have your cake and eat it too! The Galaxy 5 was designed for remarkable heat and power all housed within an incredibly lightweight and portable package. The Galaxy 5 is an obvious choice for auto detailing and for those jobs where a small yet powerful unit makes more sense. It's light enough for anyone to handle and the fold-down handle makes it a snap to transport and store. We've also added an exclusive baffle system for exceptionally quiet operation. The optional external heater can be removed in seconds if a repair is necessary with no downtime to the Galaxy 5.



Optional external heater



### SPECIFICATIONS

Solution Tank	5 gallon
Recovery Tank	3 gallon
Solution Pressure	100 psi
Optional Heater	2000 watts, stainless steel
Vacuum Motor	Single 3-stage
Water Lift	136"
Tank Construction	Polyethylene
Baseplate	Aluminum
Rear Wheels	7 inches, non-marking
Casters	2.5 inches
Power Cord	25 ft. detachable
Dimensions	28"H x 24.5"L x 16"W
Weight	57 lbs.
Shipping Weight	65 lbs.
Ship Dimensions	30"H x 25.5"L x 17"W

### FEATURES

- External heater is a snap to remove and keeps heat away from the inside of the machine for longer life.
- "No drip" motor cavity guarantees water spilled on outside of machine stays out!
- Opens quickly like a clamshell for fast and easy servicing.
- Upright-mounted motors along with a special intercooler guarantee long life and durability.
- Full complement of optional accessories attaches to the back of unit for cleaning upholstery, stairs, etc.
- Silencer system for quieter operation.
- Handle folds down for easy transport and compact storage.
- Optional heating system delivers consistent 190 degrees.

### OPTIONAL ACCESSORIES

1204ACH	Powermate – 12" wide power brush
330-11003FB	10" Stainless steel wand
1038-8002FB	Crevice tool
1039-9502FB	Stainless steel upholstery tool
323ACH	Prespray wand
1040AC-HP	15 ft. high pressure hose assembly
2540AC-HP	25 ft. high pressure hose assembly
605HR	2000 W external heater

### MODELS

500BX	3-stage vac, 100 psi, not heat ready
500BX-HR	100 psi, heat ready

# POWERMATE

## 1204ACH

Why use a standard wand when you can get a combination of powerful brush agitation and speed in a super lightweight attachment with wheels—all at a bargain

price! So lightweight and maneuverable, the Powermate will triple your productivity. No more backaches and fatigue from slow, tedious cleaning with a wand.

The Powermate attaches to any portable unit to remove deeply imbedded soil and grit at record speed! A high-speed cylindrical brush gets down to the base of the carpet fibers for more effective cleaning. Available with 1½” diameter handle. For use up to 500 psi. Order factory installed part number 00206-1A receptacle with your EDIC extractor to have the ability to plug the power cord from your Powermate directly into your machine instead of an outlet.



### FEATURES

- Weighs only 15 lbs.
- See-through front cover.
- Sealed, stainless steel ball bearings.
- High-speed 2500 RPM brush for deep cleaning.
- Heavy-duty aluminum handle.
- Adapts to all EDIC extractors.

### OPTIONAL ACCESSORIES

- B00216 Adapter to plug Powermate into standard wall outlet
- 00206-1A Receptacle, power wand (factory installed)

### MODELS

- 1204ACH 12” wide power brush, 1.5” handle diameter, up to 500 psi
- 1800AC-200 18” wide power brush, 1.5” or 2” handle diameter, up to 500 psi

## 1800AC-200

The ultimate in speed and power for a deep down clean! Powermate 1800AC attaches to any portable or truckmount extractor for cleaning tough, dirty high-traffic areas. An 18” wide cleaning path and high-speed brush save valuable time and reduce operator fatigue. The power brush is designed to clean right up to baseboards and into corners. Its fully adjustable handle fits any size operator and the low profile makes it a breeze to get under furniture. For use up to 500 psi. Now available in 2” to adapt to most truck-mount units.



### FEATURES

- 0-90 degree adjustable handle plus fingertip controls for easy handling.
- High-speed chevron-style brush for deep cleaning.
- See-through sight glass to monitor recovery.
- Heavy-duty steel handle.
- Adapts to all EDIC extractors.
- 5 Spray tips.

### SPECIFICATIONS

	1204ACH/1800AC-200
Cleaning Width	12 inches/18 inches
Housing	Ultra high-impact ABS
Brush	Cylindrical, Tynex bristles
Brush Motor	1/12 HP, 1/6 HP
Brush Speed	2500 RPM/2100 RPM
Electrical Draw	1.9/1.6 amps
Power Cord	25 ft.
Weight	15/47 lbs.
Shipping Weight	25/54 lbs.
Ship Dimensions	
1204ACH	13.5”H x 49.5”L x 18”W
1800AC-200	58.5”H x 21”L x 9.5”W

## GLIDEMASTER WANDS

### Single or Dual-Jet Stainless Steel Wand

The Glidemaster wands allow for easy pickup under furniture and desks. The head is winged to prevent overspray and the insulated handle, valve lever and grip ensure operator comfort. The dual-jet version has an S-bend for superior pickup under all types of furniture. Dual-jets guarantee maximum pressure for fast and thorough cleaning. Standard or high-pressure models available—up to 1000 psi. 1½” diameter.

#### MODELS

1033-11003FB	Single jet: High pressure
1034-110015FB	Dual jet: High pressure
1034-11001FB	Dual jet: High pressure up to 500 psi

Width:	12”
Length:	60”
Weight:	7.4 lbs.
Shipping Weight:	12 lbs.
Ship Dimensions:	65”H x 12”L x 13”W
Warranty:	30 days

### Aluminum Squeegee Wand

Our new aluminum squeegee wand can be attached to any extractor with 1½” diameter to provide thorough cleaning of hard floor surfaces.



#### MODEL

334ACH Single-jet squeegee wand

Width:	14.5”
Length:	55.5”
Weight:	5 lbs.
Shipping Weight:	9 lbs.
Ship Dimensions:	65”H x 12”L x 13”W

### Single-Jet 9” Stainless Steel Wand

This wand is perfect for use with smaller extractors like the FiveStar. 1¼” or 1½” diameter available.



#### MODELS

330-11003FB Single jet, 100 psi

Width:	9”
Length:	60”
Weight:	8 lbs.
Shipping Weight:	11 lbs.
Ship Dimensions:	65”H x 12”L x 13”W



### Single or Dual-Jet Stainless Steel Wand





A powder coated aluminum tool with a see through window and enclosed spray chamber. A notched design recirculates air reducing water buildup for faster dry times.

## MODELS

321ACH High Pressure—up to 300 psi  
Width: 3.5" Length: 7"  
Weight: 1.5 lbs. Ship Wt: 3 lbs.



Durable stainless steel auto detailer tool specially designed to effectively clean in tight places. High pressure up to 1000 psi.

## MODEL — 1039-9502FB

Width: 3.5" Length: 11.5"  
Weight: 1.7 lbs. Ship Wt: 3 lbs.



Available in "S" bend or straight tube, great for stairs and large vehicles, 1.5".

## MODEL

1035-110015FB "S" bend wand  
1036-110015FB Straight tube  
Width: 12" Length: 36"  
Weight: 4.5 lbs. Ship Wt: 7.5 lbs.



An upholstery kit designed specifically for Fivestar series units. Includes a 321AC type tool and a durable nylon mesh bag. Available in 8 ft. and 15 ft. lengths.

## MODELS

357AC-CM 15 ft. hose, tool and bag  
1.25" diameter  
357AC 8 ft. hose, tool and bag, 1.25" diameter



This auto detailer has a durable plastic head to monitor recovery. Up to 100 psi.

## MODEL—1037AC

Weight: 1.3 lbs. Ship Wt: 3 lbs.  
Width: 4" Length: 8"



Lightweight stainless steel stair tool is made of high quality components and built to last. High pressure up to 1000 psi.

## MODEL — 1021-1/8K2FB

Weight: 2 lbs. Ship Wt: 3 lbs.  
Width: 4" Length: 8"



A 15 ft. upholstery kit tool designed specifically for Polaris and Supernova units. Includes a 321ACH type tool and a durable nylon mesh bag.

## MODELS

358AC 15 ft. hose, tool and bag  
1.5" diameter



Clean those hard to reach areas with the stainless steel crevice tool.

## MODEL — 1038-8002FB

Length: 17" Width 3.5"  
Weight: 3 lbs. Ship Wt: 5 lbs.



Prespray wand constructed of brass with 25' hose.

## MODELS

323ACH— High heat, high pressure  
Weight: 3 lbs. Ship Wt: 5 lbs.

## AVIATOR

### Axial Fan

Superior performance, design and engineering makes our new axial fan the most efficient in the industry, providing more CFM with a lower amp draw. Use our large-sized blower to tackle even the toughest water damage restoration and carpet drying jobs in a hurry. With an amazing velocity of 3000 CFM at a super-low 2.3 amps, the Aviator literally blows away the competition! The bottom line is a much faster drying time which puts more money in your pocket. A built-in GFCI outlet means you can link together multiple units using only one 15-amp circuit for the really big jobs. Plus the dual-direction airflow and choice of drying positions make it extremely versatile. The Aviator axial fan is uniquely designed with 360-degree stacking for easy loading and storage. It's lightweight with an ergonomically-designed handle and convenient cord wrap for easy transport and maneuvering. Comes complete with an hour meter to monitor usage.



Built-in GFCI outlet for linking multiple units on a single circuit



Aviator with wheels



Easy and secure 360-degree stacking of units

### SPECIFICATIONS

Housing	Roto-molded polyethylene
Motor	1/4 HP
Speeds	2
Power	120 volts
Electric Draw	2.3 amps
Impeller	16.5" diameter
Stackable	Yes
Power Cord	25 ft. yellow safety cord
Weight	29 lbs.
Shipping Weight	36 lbs.
Dimensions	20.5"H x 20.5"L x 16"W
Ship Dimensions	21"H x 21"L x 16"W

### FEATURES

- The most powerful blower in its class with a velocity of 3000 CFM.
- Built-in GFCI outlet makes it easy to daisy-chain multiple units on a single 15-amp circuit.
- Hour meter monitors usage.
- Exclusive 360-degree frame allows for easy stacking of units.
- Circuit breaker protects air mover and attached devices.
- Durable polyethylene housing in granite color that retains its brand-new appearance.
- Available in a low 2.3 amps.

### MODELS

3009AF-W Aviator with wheels

## AQUA DRI

### Portable Air Mover/Carpet Dryer

Joining the ranks of our legendary 3004/3005 Aqua Dri series, is the new 3007ADN. The 3007ADN features a 2.9 amp, 2 speed, 1/3 hp motor that allows you to daisy chain up to 4 units on one circuit. At 3500 CFM on high and 3100 CFM on low, long dry times are history! Not to be ignored, our popular 3004ADN and 3005ADN have received a useful performance increase. At high speed, the 3004ADN now puts out a whopping 3700 CFM and the 3005ADN performs at an incredible 4500 CFM with no increase in amp draw. Now with three models to choose from, there is an Aqua Dri for every situation.



Accordion hose attachment for attics and other hard-to-reach places



Optional carpet clamp

### FEATURES

- Exclusive hi-tech design makes it the most versatile, compact and portable air mover in the industry.
- Heavy-duty housing is made of durable roto-molded polyethylene
- Balanced carry-along handle distributes weight evenly for superior portability.
- Easy to store or stack for transport.
- Thermally protected motor.



CFM is calculated by averaging measurements at the center and the outer edges of the vent.

### SPECIFICATIONS 3007ADN/3004ADN/3005ADN

Housing	Polyethylene
Motor	1/3 HP/ 1/2 HP/ 1/2 HP
Speeds	2/3/3
CFM	3500/3700/4500
Electrical Draw	2.9/3.9/5.5 amps
Blower Fan	9 1/2"/9 1/2"/10 5/8" diameter
Intake Screens	Open flow design
Height Adjustment	4 positions
Stackable	Yes
Kickstand	Included
Carpet Clamp	Optional, see models
Power Cord	25 ft.
Dimensions	
3004ADN/3007ADN	18"H x 18 3/4"L x 17-3/8"W
3005ADN	19 3/4"H x 20-5/8"L x 19 1/2"W
Weight	30/30/33 lbs.
Shipping Weight	33/33/36 lbs.
Ship Dimensions	19"H x 19"L x 18"W 21"H x 21"L x 19 1/2"W

### MODELS

All models available with optional carpet clamp

3004ADN	Aqua Dri, 1/2 HP, 9 1/2" fan
3005ADN	Aqua Dri Pro, 1/2 HP, 10-5/8" fan
3004AD-CCN	Aqua Dri, 1/2 HP, 9 1/2" fan with carpet clamp
3007ADN	Aqua Dri, 1/3 HP, 9 1/2" fan
3007ADN-CCN	Aqua Dri, 1/3 HP, 9 1/2" fan with carpet clamp



## EXTERNAL HEATER SYSTEM

A POWERFUL way to clean with heat!



### SPECIFICATIONS

Pressure	Up to 1300 psi
Tank Construction	Stainless steel
Shipping Dimensions	8¼”H x 24”L x 8¼”W
Power Cord	50 ft. detachable
Electric Draw	16.33/8.33 amps

A proven performer, the EDIC heater system is the most reliable and effective way to clean to clean with heat.

- Specifically engineered to improve the performance of your HEAT READY GALAXY, GALAXY PRO, and select GALAXY 5 models. Add heat to your HEAT READY machine anytime!
- The only EXTERNALLY MOUNTED heater that you can add or remove in seconds. If the heater requires servicing, simply dismount and continue working with your Galaxy extractor while your heater is serviced.
- The electrical components and heat element have received upgrades to ensure and even longer life.
- Stainless steel tank and heat element eliminate corrosion and clogs that can disrupt your workflow.
- Our 2000 Watt model offers 190-200 degrees (fahrenheit) within 90 seconds.

Look for the “HR” (Heat Ready) designation on the model number to ensure compatibility with our 2000 Watt heaters.



### MODELS

- 605HR 2000-watt heater kit for Galaxy, Galaxy Pro and selected Galaxy 5 models
- 602HR 1000-watt replacement heater for Galaxy series automotive units

## CIRCUIT LOCATOR



**MODEL: 988CS-** with 1 wall outlet plug and one twist-lock to fit EDIC equipment

**MODEL: 989CS-** with 2 wall outlet plugs

So you’ve got two power cords and you need to find outlets on different circuits? No problem! Just plug the circuit locator with an extension cord into two wall outlets — the sensor instantly lights up when it’s good to go. Use it anytime for any equipment. Prevents potential power overload by taking the guesswork out of locating circuits.





# **GALAXY AUTOMOTIVE**

## **COMES STANDARD WITH HEAT!**

The GALAXY AUTO 3000 is ready to meet and exceed the expectations of even the most demanding automotive detailers. Lots of heat, a single high performance 3 stage vacuum, and a low flow pump combine to yield squeaky clean interiors and faster dry times. The key to our single cord, heated, high performance AUTO 3000 is our state of the art LOW FLOW 100PSI pump. Our pump provides a lower moisture output compared to our standard carpet extractor pumps, while still providing a powerful 100PSI of agitation. This lower moisture output requires less energy to extract and less energy to heat. The AUTO 3000 comes with everything you need, just plug and play. Kit includes 15ft hose assembly, stainless steel auto upholstery tool and 1000 WATT heater. The 1000watt heater provides a consistent 170 degrees of heat in 90 seconds and it is externally mounted. Should the heater need servicing, you can remove it in less than 15 seconds and send it out without any down time to your extractor.



## **FEATURES**

- 1000 watt in-line external heater delivering up to 170 degrees in just 90 seconds.
- Durable stainless steel heating chamber and heating element.
- Exclusive external heating system for easy removal and repair.
- External heater design removes heat from the motor compartment keeping the vacuum motors and pump running cooler.
- Opens quickly like a clamshell for easy servicing.
- Powerful and lightweight – ideal for single operators.
- “No drip” motor cavity guarantees water spilled on the outside of machine stays outside and won’t accumulate in the motor compartment.

## **OPTIONAL ACCESSORIES**

- 1038-8002FB Stainless steel crevice tool
- 1035-110015FB Stainless steel “S” bend van tool
- 1036-110015FB Stainless steel straight van tool
- 1039-9501FB Stainless steel hand tool

## **MODELS**

- 3139BX-EH 12 gal., 1000w heater, 15-ft. hose assembly, 1039AC detailing tool

## **SPECIFICATIONS**

Solution Tank	12 gallon
Recovery Tank	11 gallon
Solution Pressure	100 psi
Vacuum Motor	Single 3-stage
Water Lift	117"
External Heater	1000 watts
Detailer Tool	Stainless steel
Hose Assembly	15 ft.
Tank Construction	Polyethylene
Baseplate	1/4" aluminum
Rear Wheels	10 inches
Casters	4 inches
Power Cord	50 ft. detachable
Dimensions	35"H x 31"L x 18"W 38"H x 31"L x 20"W
Weight	88 lbs.
Shipping Weight	110 lbs.
Ship Dimensions	36.5"H x 31"L x 19"W
Electrical Draw	18.8 amps



## GALAXY 5

### COMES STANDARD WITH HEAT!

Big on performance in a more compact package, the Galaxy 5 has the same internal components as the GALAXY AUTO 3000. Lots of heat, a single high performance 3 stage vacuum and a low flow pump combine to yield squeaky clean interiors and faster dry times. The key to our single cord, heated, high performance GALAXY 5 is our state of the art LOW FLOW 100PSI pump. Our pump provides a lower moisture output compared to our standard carpet extractor pumps, while still providing a powerful 100PSI of agitation. This lower moisture output requires less energy to extract and less energy to heat. The GALAXY 5 comes with everything you need, just plug and play. Kit includes 15ft hose assembly, stainless steel auto upholstery tool and 1000 WATT heater. The 1000watt heater provides a consistent 170 degrees of heat in 90 seconds and it is externally mounted. Should the heater need servicing, you can remove it in less than 15 seconds and send it out without any down time to your extractor.

### SPECIFICATIONS

Solution Tank	5 gallon
Recovery Tank	3 gallon
Solution Pressure	100 psi
External Heater	1000 watts
Vacuum Motor	Single 3-stage
Water Lift	117"
Tank Construction	Polyethylene
Baseplate	Aluminum
Rear Wheels	7 inches, non-marking
Casters	2.5 inches
Power Cord	25 ft. detachable
Hose Assembly	15 ft.
Weight	57 lbs.
Shipping Weight	65 lbs.
Dimensions	24.5"H x 16"L x 28"W
Ship Dimensions	25"H x 17"L x 29"W
Electric Draw	18.8 amps

### FEATURES

- Single cord operation.
- Exclusive 1000-watt external heating system for on-demand heat up to 170 degrees.
- Stainless steel heating element.
- Stainless steel heating chamber with lifetime warranty.
- Opens quickly like a clamshell for easy servicing.
- "No drip" motor cavity guarantees water spilled on the outside of machine stays outside and won't accumulate in the motor compartment.
- Exclusive EZ removable heater for quick service and no down time.
- Silencer system for quiet operation.
- Handle folds down for easy transport and compact storage.
- External heater design removes heat from the motor compartment keeping the internal parts cool.

### OPTIONAL ACCESSORIES

- 1038-8002FB Stainless steel crevice tool
- 1035-110015FB Stainless steel "S" bend van tool
- 1036-110015FB Stainless steel straight van tool
- 1039-9501FB Stainless steel hand tool

### MODEL

- 539BX-EH Single 3-stage vac, 1000-watt external heater, 15-foot automotive hose assembly, 1039AC auto detailer tool.

# **BRAVO SPOTTER**

## **WITH HEAT!**

The 17-pound Bravo spotter delivers incredible efficiency and power in a deceptively small package. No set up time—simply unload and begin cleaning immediately. Compact size and maneuverability make it ideal for spotting and quick cleaning of small carpeted areas, upholstery and auto interiors. Operators will appreciate the specially designed molded-in holders that carry spray bottles, leaving the hands free. Over time it's a winner too, thanks to the upright-mounted vacuum motor and oversized recovery tank that combine to insure longer motor life. The Bravo automotive unit comes complete with a vacuum and solution hose assembly and a stainless steel auto-detailing tool.



### **SPECIFICATIONS**

Solution Tank	3 gallon
Recovery Tank	3.5 gallon
Solution Pressure	55 psi
Vacuum Motor	2 stage, bypass
Water Lift	107"
Handle	Adjustable, 22-37"
Wheels	6 inches
Power Cord	25 ft.
Heater	1500 watts, stainless steel
Hose Assembly	8 ft.
High Heat	Long-nose, fully stainless steel tool
Weight	19 lbs.
Shipping Weight	27 lbs.
Dimensions	20.5"H x 15"L x 13"W
Ship Dimensions	23"H x 15"L x 13"W
Electrical Draw	15 amps

### **FEATURES**

- 1500 watt, in-tank heater delivers 150 degree heat.
- Unique molded-in holders carry spray bottles for greater ease.
- Stainless steel heating element.
- Large 6" wheels and an optional transport handle plus cord wrap assembly make it a snap to wheel about.
- Carry-along handle increases portability.
- Small and light enough to carry with one hand.
- Quickly opens up for easy servicing and repair.
- Large porthole on solution tank allows easy access for odor-free maintenance of recovery tank.

### **OPTIONAL ACCESSORIES**

- 330-11003FB Single-jet wand, 10" wide
- 1039-9502FB Stainless steel detailer tool

### **MODEL**

339MH-HT Bravo with heat, hose assembly and transport handle

# **AQUA DRI**

## **Portable Air Mover/Carpet Dryer**

Joining the ranks of our legendary 3004 and 3005 Aqua dri series, is the new 3007ADN. The 3007ADN features a 2.9 amp, 2 speed, 1/3hp motor that allows you to daisy chain up to 4 units on one circuit. At 3500cfm on high and 3100cfm on low, long dry times are history! Our popular 3004ADN and 3005ADN have received a useful performance increase, as well.



### **MODELS**

- All models available with optional carpet clamp
- 3004ADN Aqua Dri, 1/2 HP, 9 1/2" fan
- 3005ADN Aqua Dri Pro, 1/2 HP, 10 5/8" fan

### **SPECIFICATIONS**

Housing	3004ADN/3005ADN/3007ADN Polyethylene
Motor	1/2 HP / 1/2 HP / 1/3 HP
Speeds	3 / 2
CFM	3700/4500/3500
Electrical Draw	3.9/5.5/2.9 amps
Blower Fan	9 1/2"/10 5/8"/9 1/2" diameter
Intake Screens	Open flow design
Height Adjustment	4 positions
Stackable	Yes
Kickstand	Included
Carpet Clamp	Optional
Power Cord	25 ft.
Dimensions	
3004ADN	18"H x 18 3/4"L x 17 3/8"W
3005ADN	19 3/4"H x 20 5/8"L x 19 1/4"W
Weight	30/33 lbs.
Shipping Weight	33/36 lbs
Ship Dimensions	19"H x 19"L x 18"W

## ACCESSORIES



1033-11003FB Single-jet Wand, high pressure  
1034-110015FB Dual-jet Wand, high pressure



1039-9502FB Stainless Steel Detailer Tool/Bravo  
1039-9501FB Stainless Steel Detailer Tool/Galaxy



1038-8002FB Stainless Steel Crevice Tool/Bravo  
1038-8001FB Stainless Steel Crevice Tool/Galaxy



1035-110015FB Stainless Steel "S" Bend Wand  
1036-110015FB Stainless Steel Straight Wand

# DYNAMO WET/DRY VACUUM SERIES

## 12W/20W

These wet/dry vacuums have the power and capacity to tackle the really big jobs yet are so quiet you can use them anywhere without interrupting the work environment. The 12-gallon model combines large capacity with ease of transportation and storage. The 20-gallon Dynamo is a powerhouse featuring dual motors and the popular Tip 'N' Pour design for maximum performance. Both models come complete with a deluxe 8-piece tool kit and are available with an optional front mount squeegee attachment for removing large amounts of liquid fast. Optional HEPA filter is available on 12-gallon model. Choice of stainless steel or polyethylene housing.



## SPECIFICATIONS

Housing	Stainless steel or polyethylene
Capacity	12/20 gallon
Motor	1200w, single vac, 1.9 HP 1600w, dual vac, 2 HP
CFM	114/192
Water Lift	100/80 inches
Power Cord	33 ft.
Noise Level	63dB
Casters	3 inches
Wheels	6 inches
Dolly	Polyethylene
Tool Kit	8-piece deluxe
Filter	Washable cloth
Paper Filter	Optional
HEPA Filter	Optional on 12W
Hose	15 ft w/1.5" swivel connector
Dimensions	33"H x 19"L x 19"W 36"H x 24"L x 20"W
Weight	30/48 lbs.
Shipping Weight	50/67 lbs.
Ship Dimensions	34"H x 21"L x 21"W 39"H x 25"L x 22"W
Electrical Draw	13 amps

## FEATURES

- 63dB for whisper quiet operation.
- Equipped with a dolly cart with large rear wheels for easy transport and greater stability.
- Includes high quality "drop-in" style cloth filter bag for maximum air flow.
- Paper filter bags available on both models plus optional HEPA filters on 12W.
- Powerful 1600-watt dual vac motors on 20W for ultimate suction.
- Two-piece metal wand along with full 1½" accessory kit included.
- 8' hose includes full 1.5" swivel connection system for easy handling and operation.
- Easy water disposal with "Tip 'N' Pour" system on 20-gallon and hose drain system on 12-gallon.

## OPTIONAL ACCESSORIES

335AC	Front-mount squeegee assembly (12-gal)
336AC	Front-mount squeegee assembly (20-gal)
L11824-1	Paper filter bag

## MODELS

Optional HEPA filter available on 12-gallon models— add "H" to model number (12WH, 12WSH)

12W	12-gallon poly (with 8-piece deluxe tool kit)
12WS	12-gallon stainless steel (with 8-piece deluxe tool kit)
20W	20-gallon poly (with 8-piece deluxe tool kit)
20WS	20-gallon stainless steel (with 8-piece deluxe tool kit)



## ATLAS (patents pending)

After years of careful planning, our new Atlas is taking the back-pack vacuum market by storm. Feature for feature, it simply defies the competition! It's light enough for anyone to handle and the ergonomically-designed Velcro straps at the chest and hips result in a comfortable fit for virtually any sized operator. A special slide adjustment hooks the shoulder straps together for a higher range of motion. The on/off switch is at the hip level and mounted on top for unparalleled ease of operation. Our unique airflow design makes this unit quieter than most and the baffled exhaust goes out the back, away from the operator, for a higher level of comfort. The Atlas comes with our extraordinary Ultrastat™ 3-ply composite filter treated with an anti-microbial agent that provides exceptional airflow even when full, allowing for greater productivity. This exclusive bag is fitted with a durable plastic rim for an airtight seal around the top, and the seams are sonically welded (as opposed to glued). The result is higher dust retention, and a much longer filtration cycle.



### FEATURES

- Longer exhaust chamber and diffused exhaust air for quiet operation.
- EDIC Ultrastat™ filters have better filtration efficiency, greater dust retention and longer useful life than Micro filter bags because Ultrastat's™ revolutionary synthetic material allows greater air flow even when the bag is full.
- 3-position hip adjustment for wider or narrower hips allows the unit to sit more comfortably on the hips.
- Ergonomically designed harness with multi-adjustable settings for optimum comfort.
- Lightweight – only 10 lbs.
- Hip-mounted switch results in easy on/off.
- Precision-molded cloth filter bag rim holds it's shape to prevent collapsing inside the unit when the bag is full.
- Optional HEPA filter available on 10-qt units.
- Available in 220-volt.

### MODELS

601TV-HA	6-qt w/standard kit	1001TV-HA	10-qt w/standard Kit
602TV-HA	6-qt w/industrial kit	1002TV-HA	10-qt w/industrial kit
603TV-HA	6-qt w/mixed floor kit	1003TV-HA	10-qt w/mixed floor kit
605TV-HA	6-qt w/turbo kit	1005TV-HA	10-qt w/turbo kit
606TV-HA	6-qt w/Sidewinder kit	1006TV-HA	10-qt w/Sidewinder kit

220-Volt Vac – add “220V” to the end of any 6 or 10-qt model number.  
 HEPA Filter – add “H” to the end of any 10-qt. model number.

### SPECIFICATIONS

	<b>6 quart/10 quart</b>
Watts	1150
Amps	8.5
CFM	130
Water Lift	110"
Filtration	4 stage
Decibels	65
Thermally Protected	Yes
Construction	Roto-molded polyethylene
4-ft Static dissipating hose with swivel cuffs	Included
Power cord	50 ft. detachable
5 Disposable Ultrastat™ filters	Included
Cloth Bag	Included
Dimensions	
6 Qt.	23.5"H x 8"L x 8"W
9 Qt.	25"H x 9"L x 9"W
Weight	9.8/10.8 lbs.
Ship Weight w/tools	22/23.5 lbs.
Ship Dimensions	
6 Qt.	32"H x 13"L x 13"W
9 Qt.	32"H x 13"L x 13"W

# BACK PACK VACUUM ACCESSORIES



## STANDARD TOOL KIT

361AC Kit includes carpet tool with scallops, crevice tool, 2-pc S-bend wand, dust brush, 5" upholstery tool and slide-on brush for upholstery tool.



## MIXED FLOOR KIT

362AC Kit includes standard tool kit plus 14" floor tool with horsehair brush.



## TURBO BRUSH KIT

363AC Kit includes turbo brush head, telescopic wand, curved wand handle, crevice tool, dust brush, 5" upholstery tool, and slide-on brush for upholstery tool.



## SIDEWINDER KIT

364AC Kit includes 14" scalloped carpet tool, crevice tool, dust brush, 2-pc aluminum straight wand, and upholstery tool.



## INDUSTRIAL KIT

365AC Kit includes combo floor tool, telescopic wand, curved wand handle, crevice tool, dust brush, 5" upholstery tool and slide-on brush for upholstery tool.

## FILTERS

The revolutionary new Ultrastat™ filters are made from a high-efficiency synthetic composite treated with an anti-microbial agent. They have greater dust retention, better filtration efficiency and a longer useful life than a standard microfilter because they provide a much lower pressure

drop and therefore better CFM for longer periods of time. The Ultrastat™ filters are more durably constructed because the seams are sonically welded, as opposed to glued, and the rim is made from a durable plastic instead of cardboard.



## Cloth Filter

- L12009 6-quart filter
- L12010 10-quart filter



## Ultrastat™ Filter

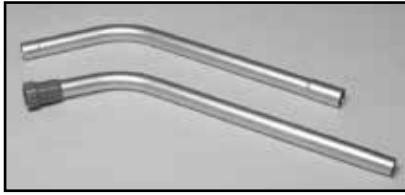
- L12004 6-quart Ultrastat™ filters (set of 5)
- L12006 10-quart Ultrastat™ filters (set of 5)
- Case quantity: 100 filters



## Dome Filter

K12019 5.7" diameter

## ATLAS BACK PACK VACUUM 1.5" ACCESSORIES continued/SPARE PARTS



**D03386-1**

Aluminum wand, 2-PC



**D03386-2**

Wand, bulk pick up, 36"



**D03386-7**

S-bend wand, telescopic



**D03386**

Aluminum wand, 1-PC



**D03386-6**

Extension wand, telescopic



**D03386-8**

Aluminum wand, straight, 59"

**D03386-10**

Aluminum extension wand, 59", Sidewinder

**D12909**

Aluminum extension wand, 30", Sidewinder

**D03386-9**

Aluminum 2-pc wand, Sidewinder

## REPLACEMENT PARTS



**K00700-3-1**

16" brush strip for K00700-3



**K00700-4-1**

11" brush strip for K00700-4



**D03386-1-1**

Threaded cap for D03386



**K00700-7-1/K00700-9-1**

14" nylon or horsehair brush for  
K00700-7 or K00700-9



**K00700-10-1**

14" felt blade for K00700-10



**D03386-1-2**

Metal ring for D03386



**K00700-13-1**

20" brush set  
for K00700-13



**K00700-11-1**

14" scalloped felt blade  
for K00700-11

## DYNAMO WET/DRY VACUUM SERIES



### 5W

The Dynamo series of wet/dry vacuums combines a host of impressive features including whisper quiet operation and incredible suction power—at a price that flattens the competition. The 5-gallon model is perfect for small spills and pickups without the need to drag out more cumbersome equipment. This model is compact for easy transport and storage yet powerful enough for heavy-duty commercial settings. A special noise reduction design means you can work anywhere, anytime without causing a disturbance. An optional HEPA filter is available for three-stage filtration. Choice of stainless steel or polyethylene housing.



### SPECIFICATIONS

#### 5W

Housing	Stainless steel or polyethylene
Capacity	5 gallon
Motor	100w, 2-stage, 1.5 HP
CFM	104
Water Lift	86 inches
Power Cord	33 ft.
Noise Level	60dB
Wheels	3" casters
Dolly	Polyethylene
Tool Kit	8-piece
Filter	Cloth
Paper Filter	Optional
HEPA Filter	Optional
Hose	8 ft w/1.5" swivel connector
Dimensions	23"H x 16"L x 16"W
Weight	20 lbs.
Ship Weight w/tools	32 lbs.
Ship Dimensions	25"H x 17.5"L x 17.5"W
Electrical Draw	13 amps

### FEATURES

- 60dB for whisper quiet operation.
- Equipped with a dolly cart for greater stability.
- Includes high quality "drop-in" style cloth filter bag for maximum airflow.
- Paper filter bags available plus optional HEPA filters.
- 2-stage motor with 86-inch lift provides powerful suction.
- Two-piece metal wand along with full 1½" accessory kit included.
- 8' swivel hose includes connection system for easy handling and operation.

### OPTIONAL ACCESSORY

L11824 Paper filter bag

### MODELS

All models available with optional HEPA filter—Add "H" to model number (5WSH, etc.)

5W 5-gallon poly (with 8-piece tool kit)

5WS 5-gallon stainless steel (with 8-piece tool kit)



8-piece tool kit



Deluxe 8-piece tool kit



## DYNAMO WET/DRY VACUUM SERIES

### 12W/20W

These wet/dry vacuums have the power and capacity to tackle the really big jobs yet are so quiet you can use them anywhere without interrupting the work environment. The 12-gallon model combines large capacity with ease of transportation and storage. The 20-gallon Dynamo is a powerhouse featuring dual motors and the popular Tip 'N' Pour design for maximum performance. Both models come complete with a deluxe 8-piece tool kit and are available with an optional front mount squeegee attachment for removing large amounts of liquid fast. Optional HEPA filter is available on 12-gallon model. Choice of stainless steel or polyethylene housing.



Front-mount squeegee for removing large volumes of water fast!



### FEATURES

- 63dB for whisper quiet operation.
- Equipped with a dolly cart with large rear wheels for easy transport and greater stability.
- Includes high quality "drop-in" style cloth filter bag for maximum air flow.
- Paper filter bags available on both models plus optional HEPA filters on 12W.
- Powerful 1600-watt dual vac motors on 20W for ultimate suction.
- Two-piece metal wand along with full 1½" accessory kit included.
- 8' hose includes full 1.5" swivel connection system for easy handling and operation.
- Easy water disposal with "Tip 'N' Pour" system on 20-gallon and hose drain system on 12-gallon.

### OPTIONAL ACCESSORIES

335AC/336AC Front-mount squeegee assembly  
L11824-1 Paper filter bag



335AC (24")



336AC (24")

### MODELS

Optional HEPA filter available on 12-gallon models—add "H" to model number (12WH, 12WSH)

12W 12-gallon poly (with 8-piece deluxe tool kit)  
12WS 12-gallon stainless steel (with 8-piece deluxe tool kit)  
20W 20-gallon poly (with 8-piece deluxe tool kit)  
20WS 20-gallon stainless steel (with 8-piece deluxe tool kit)

### SPECIFICATIONS

	12W/20W
Housing	Stainless steel or polyethylene
Capacity	12/20 gallon
Motor	1200w, single vac, 1.9 HP 1600w, dual vac, 2 HP
CFM	114/192
Water Lift	100/86 inches
Power Cord	33 ft.
Noise Level	63dB
Casters	3 inches
Wheels	6 inches
Dolly	Polyethylene
Tool Kit	8-piece deluxe
Filter	Washable cloth
Paper Filter	Optional
HEPA Filter	Optional on 12W
Hose	8 ft w/1.5" swivel connector
Dimensions	33.5"H x 20"L x 19"W 39"H x 26"L x 22"W
Weight	30/48 lbs.
Ship Weight w/tools	50/67 lbs.
Ship Dimensions w/tools	34.5"H x 21"L x 21"W 39"H x 26"L x 22"W
Electrical Draw	13 amps

## SATURN

### HD LOW SPEED FLOOR MACHINES

HD stands for “Heavy Duty” and that is exactly what the Saturn HD low speed floor machine is. With its all-metal construction and steel planetary gear boxes, the Saturn can stand up to the heaviest workloads, yet the ride is surprisingly smooth and quiet. The high torque 1.5HP 66 frame motor with triple planetary gears is totally enclosed and fan cooled to provide exceptional power and to withstand dust, moisture and other harsh conditions. The rugged HD units are ideal for sanding, screening, stone care, and concrete work. Features like the quick and easy handle adjustment, anti-fatigue design, and the exclusive “lockout lever” for safe two-handed start up make this machine operator friendly and a winner in every commercial setting. Available in 4 different sizes, there is a perfect HD low speed Saturn for any size job.

#### FEATURES

- All-metal construction assures durability.
- Hi torque, totally enclosed, fan cooled motor handles dust, moisture and other harsh conditions
- The rugged HD units are ideal for sanding, screening, stone care and concrete work
- All-steel triple planetary gearbox provides heavy duty yet quiet operation.
- Dual-trigger negative pressure switch allows operator to run with either hand.
- Turn a 13-inch machine into a 20” or any other combination, by removing just four bolts.
- Exclusive “lockout lever” is designed so operator can safely activate motor with both hands on the grips.
- Wide-gripping handle locking mechanism guarantees a tight lock and smooth adjustment.
- Non-marking PVC bumper prevents marks on walls and furniture.

#### OPTIONAL ACCESSORIES

- 390AC Shampoo tank for carpets  
 1601BR/1901BR Pad driver with molded-in clutch plate  
 1603BR/1903BR Pad driver with replaceable clutch plate  
 For a complete listing of pad drivers, brushes and accessories, see page 34

#### MODELS All Models 172 RPM

##### Stainless Steel Brush Cover

13LS4-SS	13” 1.5 HP
15LS4-SS	15” 1.5 HP
17LS4-SS	17” 1.5 HP
20LS4-SS	20” 1.5 HP

##### Black Powder Coated Brush Cover

13LS4-BK	13” 1.5 HP
15LS4-BK	15” 1.5 HP
17LS4-BK	17” 1.5 HP
20LS4-BK	20” 1.5 HP



#### SPECIFICATIONS

Brush Speed	172 RPM
Pad Diameter	13”, 15”, 17” or 20”
Motor	1.5 HP, TEFC Motor
Gear Box	1.5 HP—triple planetary
Power Cord	50 ft. yellow
Brush Cover	Stainless steel, Power Coated
Handle Grips	Soft, anti-fatigue
Handle	Chrome-plated steel
Wheels	5 inches
Bumper	Non-marking PVC
Operation Control	All metal, dual on-off
Weight	13” — 109 lbs. 15” — 111 lbs. 17” — 113 lbs. 20” — 116 lbs.
Shipping Weight	13” — 126 lbs. 15” — 128 lbs. 17” — 130 lbs. 20” — 133 lbs.
Ship Dimensions	48”H x 26.5”L x 23”W
Electrical Draw	13” — 13 amps 15” — 13 amps 17” — 13 amps 20” — 13 amps

# SATURN

## LOW SPEED FLOOR MACHINES

No job is too tough for this rugged series of floor machines from EDIC. With its all-metal construction and steel planetary gear boxes, the Saturn can stand up to the heaviest workloads, yet the ride is surprisingly smooth and quiet. The low speed models are built specifically to handle the stress associated with stripping and scrubbing hard floor surfaces as well as bonnet cleaning and shampooing carpets. Features like the quick and easy handle adjustment, anti-fatigue design, and the exclusive “lockout lever” for safe two-handed start up make this machine operator friendly and a winner in every commercial setting. Available in 4 different sizes, there is a perfect low speed Saturn for any size job.



### FEATURES

- All-metal construction assures durability.
- All-steel triple planetary gearbox provides heavy duty yet quiet operation.
- Dual-trigger negative pressure switch allows operator to run with either hand.
- Turn a 13-inch machine into a 20” or any other combination, by removing just four bolts.
- Exclusive “lockout lever” is designed so operator can safely activate motor with both hands on the grips.
- Wide-gripping handle locking mechanism guarantees a tight lock and smooth adjustment.
- Non-marking PVC bumper prevents marks on walls and furniture.

### OPTIONAL ACCESSORIES

- 390AC Shampoo tank for carpets
  - 1601BR/1901BR Pad driver with molded-in clutch plate
  - 1603BR/1903BR Pad driver with replaceable clutch plate
- For a complete listing of pad drivers, brushes and accessories, see page 34

### MODELS All Models 175 RPM

#### Black Powder Coated Brush Cover

- 13LS3-BK 13” 1.5 HP
- 15LS3-BK 15” 1.5 HP
- 17LS3-BK 17” 1.5 HP
- 20LS3-BK 20” 1.5 HP

#### Stainless Steel Brush Cover

- 17LS3-SS 17” 1.5 HP
- 20LS3-SS 20” 1.5 HP

### SPECIFICATIONS

Brush Speed	175 RPM
Pad Diameter	13”, 15”, 17” or 20”
Motor	1.5 HP
Gear Box	1.5 HP—triple planetary
Power Cord	50 ft. yellow
Brush Cover	Stainless steel
Handle Grips	Soft, anti-fatigue
Handle	Chrome-plated steel
Wheels	5 inches
Bumper	Non-marking PVC
Operation Control	All metal, dual on-off
Weight	13” — 91 lbs. 15” — 93 lbs. 17” — 95 lbs. 20” — 98 lbs.
Shipping Weight	13” — 101 lbs. 15” — 106 lbs. 17” — 112 lbs. 20” — 115 lbs.
Ship Dimensions	48”H x 26.5”L x 23”W
Electrical Draw	13” — 14.4 amps 15” — 14.4 amps 17” — 14.4 amps 20” — 14.4 amps

## SATURN HIGH SPEED

### BURNISHERS

Available in traditional style or new 17" compact design with fold-down handle!

The Saturn burnishers make it simple to bring a smooth, super high-gloss luster to any hard floor surface. Watching these machines in action will make anyone a believer! The perfect combination of weight and high speed produces a spectacular finish in record time. Brand new to the line-up is a 17" 2000 RPM model with a fold-down handle and a special compressed design for the ultimate in portability and storage plus greater maneuverability in tight spaces. Our traditional 20" models are available in 1500 or 2000

RPM and both the traditional and fold-down models are designed with an all-metal construction including stainless steel brush cover, making them as durable as they are dependable. All models come complete with flex-lock pad driver and high-speed pad.



### SPECIFICATIONS

Brush Speed	17 – 2000 RPM 20 – 1500/2000RPM
Pad Diameter	17"/20"
Motor	1.5 HP
Gear Box	Multi-V belt
Power Cord	75 ft. yellow
Cord Strain Relief	Heavy-duty steel with spring guard
Brush Cover	Stainless steel
Handle Grips	Soft, anti-fatigue
Handle	Chrome-plated steel
Wheels	5 inches
Bumper	Non-marking PVC
Operation Control switch, left or right hand	Dual trigger on-off safety
Weight	84/96 lbs.
Shipping Weight	96/108 lbs.
Ship Dimensions	54"H x 31"L x 22.5"W
Electrical Draw	11.1 amps

### FEATURES

- Multi-V belt drive reduces load on bearings and extends motor life.
- Smooth operation for reduced operator fatigue.
- Unique lockout system prevents accidental start-ups and allows machine to be activated with both hands on the grips.
- All-metal chassis plus stainless steel cover assure long life and dependability.
- New 17-inch model folds-down for super easy storage and transportation.
- Cool running 1.5 HP high efficiency motor.
- Rear transport wheels for easy turning and increased mobility.
- Easy motor access for quick servicing.
- 75-foot power cord.

### MODELS

#### Black Powder Coated Brush Cover

20HS1500-BK	20" – 1500 RPM high speed
20HS2000-BK	20" – 2000 RPM high speed
17HS2000F-BK	17" – 2000 RPM fold-down

#### Stainless Steel Brush Cover

20HS1500-SS	20" – 1500 RPM high speed
20HS2000-SS	20" – 2000 RPM high speed
17HS2000F-SS	17" – 2000 RPM fold-down



# SATURN

## DUAL SPEED FLOOR MACHINES

Get more bang for your buck with one machine that does the work of two! Strip, scrub, spray-buff, polish, shampoo, bonnet clean... you name it, this machine does it all! Designed for professional floor care maintenance, the dual speed floor machines from EDIC are equipped with long-wearing steel triple planetary gearboxes, providing heavy duty yet quiet operation. Safety comes first with the exclusive "lockout" lever that allows the motor to be activated while keeping both hands on the handle grips. Use the lower speed to scrub and strip then just flip the switch to high speed and polish floors to a glossy luster. Operation is smooth and easy in even the toughest commercial settings.

### FEATURES

- All-metal construction with stainless steel brush cover, heavy duty chrome-plated steel handle and 66 frame motor assure durability.
- All steel triple planetary gearbox provides heavy duty yet quiet operation.
- Turn a 17-inch machine into a 20" machine, or vice versa, by removing just four bolts.
- Dual trigger negative pressure switch allows operator to run with either hand.
- Safe two-handed start-up with exclusive "lockout lever".
- Cool running 1.5 HP high efficiency motor.
- 50-foot power cord.
- Non-marking PVC bumper prevents marks on walls and furniture.
- Available in 17" or 20" diameter.

### OPTIONAL ACCESSORIES

1601/1901BR Pad driver, with molded-in clutch plate  
 1603/1903BR Pad driver with replaceable clutch plate  
 For a complete listing of pad drivers, brushes and accessories, see page 34

### MODELS

#### Black Powder Coated Brush Cover

17DS3-BK 17" — 180/320 RPM dual speed  
 20DS3-BK 20" — 180/320 RPM dual speed

#### Stainless Steel Brush Cover

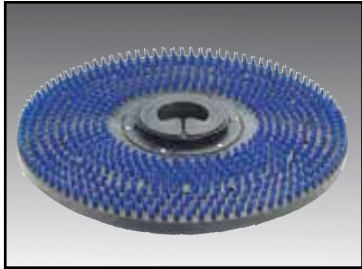
17DS3-SS 17" — 180/320 RPM dual speed  
 20DS3-SS 20" — 180/320 RPM dual speed



### SPECIFICATIONS

Brush Speed	Dual 180/320 RPM
Diameter	17" or 20"
Motor	1.5 HP/66 frame
Gear Box	Steel triple planetary
Power Cord	50 ft. yellow
Cord Strain Relief	Heavy-duty steel with spring guard
Brush Cover	Stainless steel
Handle Grips	Soft, anti-fatigue
Handle	Chrome-plated steel
Wheels	5 inches
Bumper	Non-marking PVC
Operation Control	All metal, dual on-off
Weight	86/92 lbs.
Shipping Weight	106/112 lbs.
Ship Dimensions	48"H x 26.5"L x 23"W
Electrical Draw	14.4 amps

# ACCESSORIES



1601BR



2004BR



1505BR



1106BR



1506BR



1807BR



F11988

## PAD DRIVERS

- 1202BR 12" block, 13" machine
- 1601BR 16" block, 17" machine  
molded-in clutch plate
- 1603BR 16" block, 17" machine
- 1901BR 19" block, 20" machine  
molded-in clutch plate
- 1903BR 19" block, 20" machine
- 1704BR Flex-lock, 17" hi-speed
- 2004BR Flex-lock, 20" hi-speed
- F11988 High speed pad

## BRUSHES

- 1105BR Nylon 11" block, 13" machine
- 1505BR Nylon 15" block, 17" machine
- 1805BR Nylon 18" block, 20" machine
- 1106BR Poly 11" block, 13" machine
- 1506BR Poly 15" block, 17" machine
- 1806BR Poly 18" block, 20" machine
- 1107BR\* Grit 11" block, 13" machine
- 1507BR\* Grit 15" block, 17" machine
- 1807BR\* Grit 18" block, 20" machine

\*Grit Brushes are available in the following 4 grades:

- #1 Heavy Grit—Equivalent to high pro stripper pad
- #2 Medium—Equivalent to black or brown pad
- #3 Lite—Equivalent to green or blue pad
- #4 Extra Lite—Equivalent to red pad

## SHAMPOO TANK

- 390AC Shampoo tank  
4-gallon capacity with brass valve



13" Saturn with  
shampoo tank

## PILOT AUTOMATIC SCRUBBER



Our amazing new automatic scrubber is ideal for deep cleaning of grouted pavers and hard floors. The Pilot gives you all the performance of larger, more expensive equipment but in a lightweight, compact size that's super easy to operate and store. At only 30 lbs, it's simple to transport to any job site. The Pilot's versatility makes it perfect for routine maintenance or periodic deep cleaning, especially in tight, obstructed areas such as restrooms or locker rooms.

The knockout punch of this machine is its rotary brushes. It features a pair of high-speed counter-rotating circular nylon brushes with two levels of bristles that deep-clean grout better than any cylindrical method. The flexing action of the flared nylon bristles scrubs the most difficult-to-clean mosaic tile and stone grouted floors with truly amazing results. Superior urethane squeegee blades allow one-pass cleaning or can be raised to double scrub for restorative cleaning.

The Pilot is the perfect green machine where less is more! It does not require harsh detergents that can damage sensitive stone and grout surfaces. It uses less solution, works in tandem with green chemicals and with its single motor, draws less amps.

EDIC's Pilot is user friendly and simple to operate and maintain. The recovery bucket, tank, brushes, squeegee and power cord can be taken apart in seconds to switch to other accessories. Optional nylo-grit brushes and pad holders can be attached for surface polishing and stripping of any hard surface.



### SPECIFICATIONS

Brush Motor	120V, 700 watts
Vacuum Motor	Triple fan system
Cleaning Width	14 inches
Cleaning Capacity	4,200 sq. ft. per hour
Squeegee	16 inches
Brushes (2)	Circular/nylon bristles
Brush Speed	550 RPM
Brush Pressure	18 lbs.
Solution Tank	1 gallon
Recovery Tank	1 gallon
Wheels (2)	4", non-marking
Power Cord	25 ft. detachable, 3 ft. pigtail
Dimensions (Upright)	43.75"H x 20"L x 16"W
Weight	30 lbs.
Shipping Weight	33 lbs.
Ship Dimensions	16"H x 23"L x 16.5"W
Electrical Draw	4.5 amps, 115V

### FEATURES

- Unique dual counter-spinning rotary brushes (not cylindrical) with two levels of bristles for a deep down clean that outperforms the competition.
- Unbeatable performance in a compact size—only 30 lbs!
- Does the job of heavier, more expensive equipment but can be stored in a closet and is super easy to maneuver. It even fits on a maid's cart.
- Low carbon footprint—cleans with green chemicals, uses less solution and draws less power.
- Truly automatic—simply lower the handle to activate—no on/off switch!
- Comes complete with a high-quality squeegee that leaves floors clean and completely dry.
- A total cleaning system that promotes clean and sanitized stone, tile and hard floors.

### OPTIONAL ACCESSORIES

TU1501	Standard brush set (2)
TU1505	Pad holder (2)
TU1501T	Nylo-grit brushes (2)
TU1700PU	Squeegee assembly
F13130	Black stripping pad, 6.5"
F13131	Green scrub pad, 6.5"
F13132	White buffing pad, 6.5"

### MODEL

1400SC	Pilot automatic scrubber
--------	--------------------------



**EDIC**

1753 Blake Avenue  
Los Angeles, CA 90031-1006  
USA

Telephone: (323) 660-1635  
Toll-free: (800) 338-3342  
Fax: (323) 667-0144  
Email: [sales@edic-usa.com](mailto:sales@edic-usa.com)  
Website: [www.edic-usa.com](http://www.edic-usa.com)

December 2013