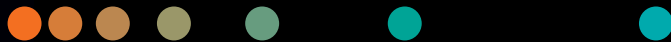
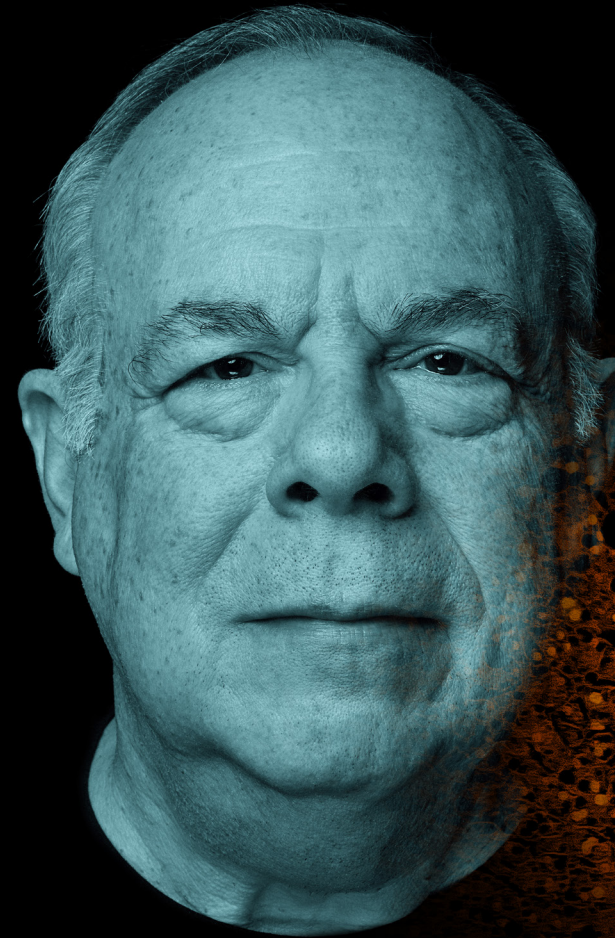


# The Enhanced Liver Fibrosis (ELF) Test

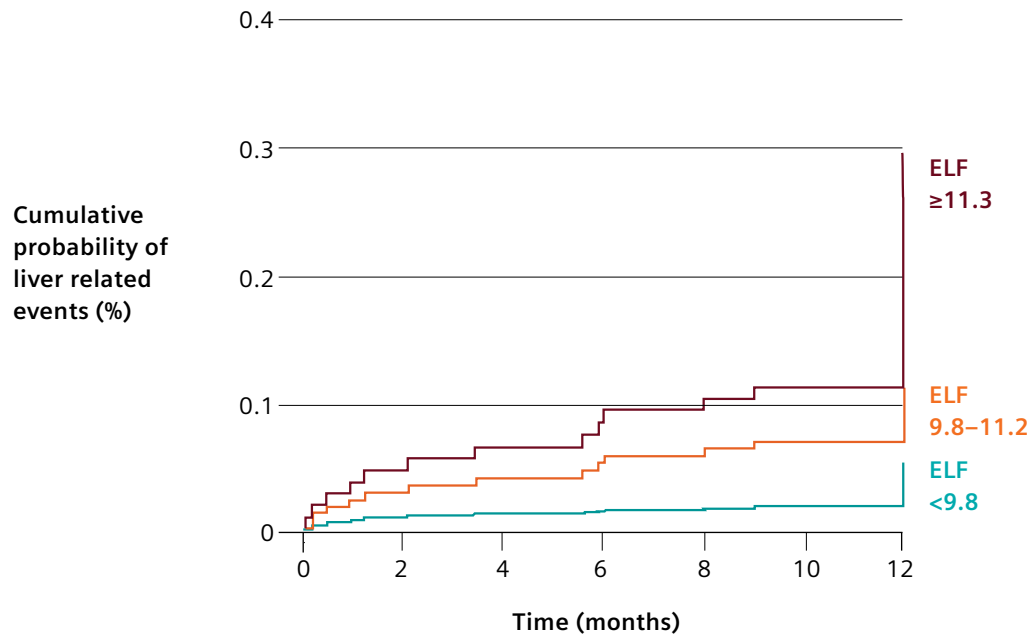
Assess the risk of disease progression in patients with advanced fibrosis due to nonalcoholic steatohepatitis (NASH) with a simple blood test

[siemens-healthineers.us/elf](https://siemens-healthineers.us/elf)



# ELF can help determine risk of liver-related events in patients with NASH and compensated cirrhosis

## ELF at baseline<sup>1</sup>



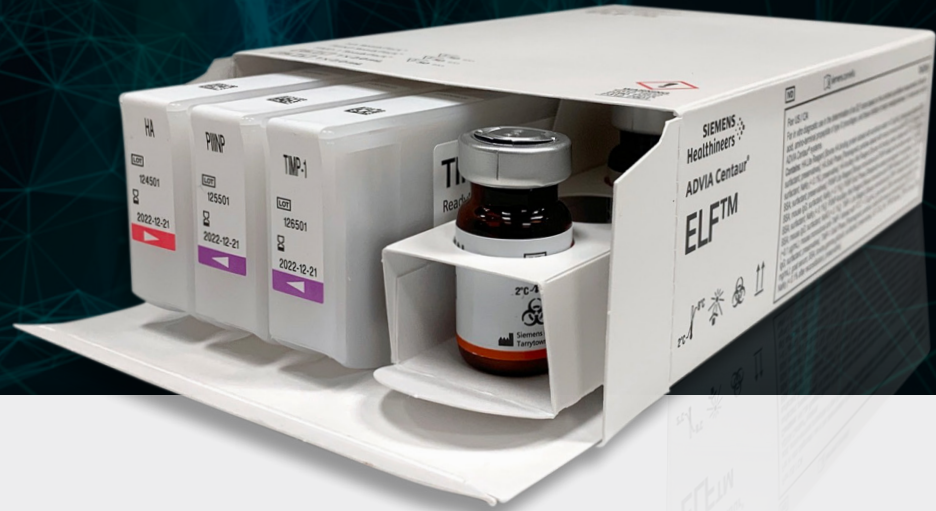
Data from placebo arm of this study are included in the pooled study analysis in the U.S. Instructions for Use.

ELF score	Absolute risk	Likelihood ratio	Hazard ratio
≥11.3	32.7	1.88	4.81
9.8-11.2	16.9	0.79	1.46
<9.8	10.5	0.46	1.00

The results indicated that ELF ≥11.3 is associated with **5x greater risk** of experiencing a liver related event\* within a year.

- \* Liver related events can include:
- Development or progression of gastroesophageal varices
  - New-onset ascites
  - Variceal hemorrhage
  - Hepatic encephalopathy

# How does the ELF test work?



The ELF™ Test measures three serum biomarkers:

1. Hyaluronic acid (HA)
2. Procollagen III N-terminal peptide (PIIINP)
3. Tissue inhibitors of metalloproteinase 1 (TIMP-1)

The three direct markers are combined into an ELF score

This ELF score indicates the risk of a patient's progression to cirrhosis, and their likelihood of having a liver-related event in the future

< 9.8	Lower
≥ 9.8 – < 11.3	Mid*
≥ 11.3	Higher

**The ELF test assesses active dynamic fibrosis rather than the damage it has caused**

These individual biomarkers reflect integral extracellular matrix (ECM) components of dynamic fibrogenesis and fibrolysis processes in real time.

In contrast, indirect-biomarker panels merely reflect a mixture of biochemical abnormalities found in chronic liver disease that are not specific to NASH or fibrosis.

Each ELF Test biomarker composing the ELF score is:

- Standardized to ensure reproducible analytical and clinical quality.
- Designed and validated for prognostic risk assessment.

*\*In the Mid group, the risk of disease progression is similar to the pre-test risk. Pre-test risk refers to the likelihood of disease progression in the overall intended use population without considering the ELF score.*

# ELF is Clinically Valuable in NASH Prognostic Care

ELF can be integrated into patient management pathways once at-risk patients are identified in primary care

## INITIAL VISIT



### EVIDENCE OF ≥1 OF THE FOLLOWING:

- Fatty Liver on Imaging?
- BMI ≥ 30?
- Type 2 Diabetes?
- Elevated LFTs?



### CALCULATE FIB-4\* (standard blood work)

	Under 65	65 & Older	
LOW RISK	0-1.3	0-2.5	MONITOR
MEDIUM TO HIGH RISK	≥ 1.3 <sup>12</sup>	≥ 2.5 <sup>12</sup>	Confirmation of advanced fibrosis due to NASH

\*FIB-4 is a simple calculation involving:

1. Platelet count
2. Age
3. Liver Enzymes (ALT & AST)



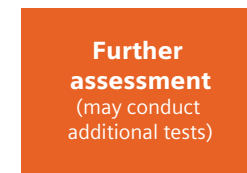
## ELF Test

≥9.8 – 11.3

Mid risk for progression and liver-related events

≥ 11.3

Higher risk for progression and liver-related events



\*Once therapies are available



# Individuals with metabolic diseases are at a higher risk of developing or having NAFLD



## Comorbidities

BMI  $\geq 30$   
**60-95%**  
also have NAFLD

**2 or more features of metabolic syndrome**

Cardiovascular Disease  
**69%**  
also have NAFLD



Type 2 Diabetes  
**50-74%**  
also have NAFLD



**90%**  
also have NAFLD



Hypertension  
**50-74%**  
also have NAFLD

~12% have lean NAFLD



NAFLD is seen as the liver manifestation of metabolic syndrome

# The ELF Test



The Enhanced Liver Fibrosis (ELF™) Test is a noninvasive blood test that quantifies three analytes which directly contribute to liver fibrosis. ELF measurements have proven valuable for identifying patients with NASH with advanced fibrosis (F3 or F4) at risk of progressing to cirrhosis and/or LREs.

The widely studied ELF Test can assess active, dynamic fibrosis rather than the damage it has caused. This allows the ELF Test to be used as a prognostic marker.

- Access noninvasive testing with a simple blood test available to all patients, including those with type 2 diabetes mellitus and obesity.<sup>10,11</sup>
- Improve patient care by stratifying advanced NASH patients most at risk of progressing to cirrhosis and LREs.<sup>12</sup>
- Enhance patient management with a blood test that facilitates more frequent prognostic assessments to optimize patient management.

## Reimbursement

MAAA CPT Code	0014M	\$176.19	✓
---------------	-------	----------	---



*First blood test granted De Novo marketing authorization by the FDA for prognosis in patients with advanced fibrosis due to NASH*

## Characteristics of an ideal non-invasive NASH test

	Applicable in different patients			Economic Health Value		Access	
	Adults	Obesity	Diabetes	Add Clinical Value	Improve ease and frequency of prognostic evaluation	Simple blood test	Large installed base
<b>The ELF Test</b>	✓	✓	✓	✓	✓	✓	✓

Siemens Healthineers AG (listed in Frankfurt, Germany: SHL) pioneers breakthroughs in healthcare. For everyone. Everywhere. As a leading medical technology company headquartered in Erlangen, Germany, Siemens Healthineers and its regional companies is continuously developing its product and service portfolio, with AI-supported applications and digital offerings that play an increasingly important role in the next generation of medical technology. These new applications will enhance the company's foundation in in-vitro diagnostics, image-guided therapy, in-vivo diagnostics, and innovative cancer care.

Siemens Healthineers also provides a range of services and solutions to enhance healthcare providers' ability to provide high-quality, efficient care. In fiscal 2021, which ended on September 30, 2021, Siemens Healthineers, which has approximately 66,000 employees worldwide, generated revenue of €18.0 billion and adjusted EBIT of €3.1 billion.

Further information is available at [www.siemens-healthineers.com](http://www.siemens-healthineers.com).

The outcomes and statements provided by customers of Siemens Healthineers are unique to each customer's setting. Since there is no "typical" hospital and many variables exist (e.g., hospital size, case mix, and level of service/technology adoption), there can be no guarantee that others will achieve the same results.

On account of certain regional limitations of sales rights and service availability, we cannot guarantee that all products included in this brochure are available through the Siemens Healthineers sales organization worldwide. Availability and packaging may vary by country and is subject to change without prior notice. Some/All of the features and products described herein may not be available in the United States.

The information in this document contains general technical descriptions of specifications and options as well as standard and optional features, which do not always have to be present in individual cases.

Siemens Healthineers reserves the right to modify the design, packaging, specifications, and options described herein without prior notice. For the most current information, please contact your local sales representative from Siemens Healthineers.

Note: Any technical data contained in this document may vary within defined tolerances. Original images always lose a certain amount of detail when reproduced.

#### References

1. Are VS, et al. *Clin Gastroenterol Hepatol*. 2021;19(6):1292-1293.e3.
2. Godoy-Matos AF, et al. *Diabetol Metab Syndr* 2020;12:60.
3. Divella R, et al. *Int J Biol Sci*. 2019;15(3):610-16.
4. Zhao YC, et al. *Hypertension*. 2020;75:275-284.
5. Younossi ZM, et al. *Diabetes Care* 2020;43:283-9.
6. Bedogni G, et al. *Hepatol*. 2007;46(5):1387-1391.
7. Kasper P, et al. *Clin Res Cardiol*. 2020. <https://doi.org/10.1007/s00392-020-01709-7>
8. Estes C, et al. *Hepatology* . 2018;67:123-33.
9. Hamaguchi M, et al. *Annals of internal medicine* 2005;143:722-8.
10. Patel P, et al. *Hepatol Commun*. 2018;2:893-905.
11. Karlas T, et al. *PLoS ONE*. 2015;10(11):e0141649.
12. Sanyal AJ, et al. *Hepatology*. 2019;70(6): 1913–1927

---

#### Siemens Healthineers Headquarters

Siemens Healthcare GmbH  
Henkestr. 127  
91052 Erlangen, Germany  
Phone: +49 9131 84-0  
[siemens-healthineers.com](http://siemens-healthineers.com)

#### Published by

Siemens Healthcare Diagnostics Inc.  
Laboratory Diagnostics  
511 Benedict Avenue  
Tarrytown, NY 10591-5005  
USA  
Phone: +1 914-631-8000