



NORTH AMERICAN ARMS®
*Convenient...
Reliable...
Effective!*





North American Arms® manufactures a unique family of small caliber, small frame size firearms which are intended primarily for concealed carry and personal protection. Purposefully designed and popularly considered as **“Convenient, Reliable, Effective”**, they are:

- **Convenient** - because of their small size and light weight, NAA® firearms are easy to carry and conceal everywhere (legally permissible), every day. Along with their wallet and keys, many of our customers “don’t leave home with out one”.

- **Reliable** - made in America from the finest grades of stainless steel, NAA® firearms are engineered and manufactured to exacting tolerances. With functioning popularly described as “flawless”, all NAA® products are supported by a lifetime warranty.

- **Effective** - while not the ballistic equivalent of a .45 ACP, .22 rimfire (and .32 / .380 ACP) bullets are unarguably lethal at self-defense ranges. In the face of a violent confrontation, any gun is better than no gun, and simply brandishing a weapon frequently diffuses a potential threat.

In addition to self defense, NAA® products are popular choices for law enforcement as easily concealable backups. Recreational customers appreciate their light weight and portability in backpacks and tackle boxes. Women and new shooters are comfortable with their simple and intuitive operation. Collectors admire their craftsmanship and classic designs, and casual shooters simply enjoy low-cost plinking.

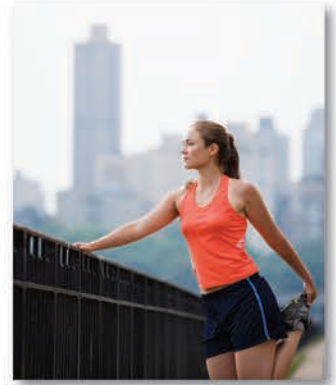
NAA® products enjoy a flattering reputation, built after almost 40 years, of high quality and affordability, supported by a customer service team second to none.

You know you want one - what’s your reason?

SELF DEFENSE STATISTICS...

644,967 handguns are used annually for self-defense in America - or roughly once every 48 seconds.

Policy Review, No. 63, “The Violence of Gun Control, David B. Kopel, (The Flagship Publication of the Heritage Foundation)



Convenient...

NAA® .22 MAGNUM



**NAA® Magnum
NAA-22M**
(actual size shown)
Optional .22LR conversion cylinder assembly available

NAA® .22 LONG RIFLE



**NAA® Long Rifle
NAA-22LR**
(actual size shown)

NAA® .22 SHORT



**NAA® Short
NAA-22S**
(actual size shown)

The original line of NAA®-designed birds-head gripped, 5 shot revolvers is the most successful family of mini-revolvers ever manufactured. Highlighted by the ultra-small .22S, each of these is the smallest functioning revolver of its caliber in production, allowing for maximum concealability.

Frequently characterized as “watch-like” to describe the precision in engineering and manufacturing as well as the quality of craftsmanship. NAA® mini-revolvers address a wide variety of markets and applications. Each can be tailored to meet your particular needs, tastes and interests with a wide selection of grips, holster, sights and novel carry options.

NAA® firearms are designed for people who respect the adage “it’s better to have a small gun on your person than a large gun at home / in the car / etc”.



Reliable... **NAA® .22 RANGER II BREAK-TOP**



**NAA® RANGER II
Break-Top (4")
NAA-22M-R4**
(actual size shown)



**NAA® RANGER II
Break-Top (2 1/2")
NAA-22M-R2.5**
(actual size shown)
with optional Tritium Sight



**NAA® RANGER II
Break-Top (1 1/2")
NAA-22M-R**
(actual size shown)



The NAA® "RANGER II Break-Top" features an 1870's U.S. Calvary "top break" style, where a simple nudge of the thumb releases the cam-activated star extractor presenting the spent cartridge cases for easy removal and reloading. This allows easier loading and unloading, by not having to remove the cylinder from the gun.

This revolver is offered in standard .22 Magnum with an optional .22LR conversion cylinder assembly.



Effective!

NAA® .22 SIDEWINDER



NAA® Sidewinder (250)
NAA-SW250
(actual size shown)



NAA® Sidewinder (4")
NAA-SW4
(actual size shown)



NAA® Sidewinder (1 1/2")
NAA-SW
(actual size shown)

Cylinder assembly
shown with star
extractor pushing
out bullets



The NAA® "Sidewinder" features a "swing-out" style cylinder assembly similar to most other modern revolvers. Now available in 4", 2 1/2" & 1 1/2" barrels.

This allows easier loading and unloading, by not having to remove the cylinder from the gun. The starwheel extractor pushes out all the spent cartridges at once.

This revolver is offered in standard .22 Magnum with an optional .22LR conversion cylinder assembly.



NAA® .22 HOLSTER GRIP GUN COMBINATION



**NAA® Magnum
(1 5/8") Holster Grip
NAA-22M-HG**
(actual size shown)

**NAA® Magnum Snub
(1 1/8") Holster Grip
NAA-22MS-HG**
(not shown actual size)

The NAA® "Holster Grip" is one of the most innovative gun/grip configurations in the firearms industry. Available for both Magnum and Long Rifle frame size mini-revolvers, the rugged plastic sheath (with ambidextrous clip) folds knife-like against the bottom of the gun, creating a great variety of additional concealed opportunities - modes. When positively locked open, the "Holster Grip" provides a full-sized gripping surface for comfortable, secure handling and more positive recoil control. The model numbers represented on this page show the shipping configuration for your gun order.



**NAA®
Long Rifle
(1 5/8")
Holster Grip
NAA-22LLR-HG**
(actual size shown)

**NAA® Long Rifle
(1 1/8") Holster Grip
NAA-22LR-HG**
(not shown actual size)

NAA® .22 LASER GRIP GUN COMBINATION



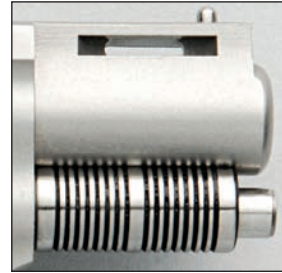
**NAA® Magnum Snub (1 1/8")
Viridian Grip Laser
NAA-22MS-VL**
(actual size shown)

What you see is what you get with the "Viridian Grip Laser". The laser dot maximizes your self protection aiming accuracy. This Model Number Magnum Snub is the only shipping configuration available with the black rubber grip and rugged plastic cased laser, and can be fitted with an optional .22LR conversion cylinder assembly.

NAA® .22 WASP



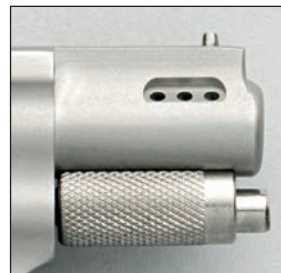
NAA® Wasp Magnum
NAA-22M-TW
(actual size shown)



NAA® .22 PORTED



NAA® Ported Magnum
NAA-22M-P
(actual size shown)



Personalize your concealed carry by choosing one of our "Wasp" or "Ported" models. The "Wasp" features a vented barrel rib, embellished cylinder and pin, as well as the rubber cobble stone grip; while the "Ported" model features a beautifully machined ported barrel. Both are .22 Magnum frames, available in a 1 1/8" or 1 5/8" barrel, and can be fitted with an optional .22LR conversion cylinder assembly.

FIREARM STATISTICS...

"Americans use firearms for protection an estimated one million times each year."

Morgan O. Reynolds and W.W. Caruth, III.,
Myths about Gun Control.
National Center for Policy Analysis, Report No. 176



NAA® .22 1860 EARL



NAA® 1860 Earl (4")
NAA-1860-4
(actual size shown)

NAA® 1860 Earl (3")
NAA-1860-3
(not shown actual size)

The NAA® "Earl", with its faux loading lever, is an 1860-style mini-revolver designed to resemble a 150 year old percussion piece then popular in the Old West. With its heavy octagonal barrel, top strap channel and bead front sight, the "Earl" could become your favorite plinker (pray for the snake, rodent or tin can that dares cross your path!). With available flap holster of belt-grade leather, strap on the "Earl" for an imaginative trip to a simpler time. Different barrel length sizes are 3", 4" and 6". Can be fitted with optional non-fluted .22LR conversion cylinder assembly.



NAA® 1860 Earl (6")
NAA-1860-6
(not shown actual size)

NAA® .22 1860 SHERIFF

The NAA® "Sheriff" is built on the stylistic frame of the popular "Earl" with a rectangular-shaped cylinder pin, which lines perfectly and complements the octagonal 2 1/2" barrel.

NAA® 1860 Sheriff (2 1/2")
NAA-1860-250
(not shown actual size)
Optional non-fluted .22LR
conversion cylinder
assembly available



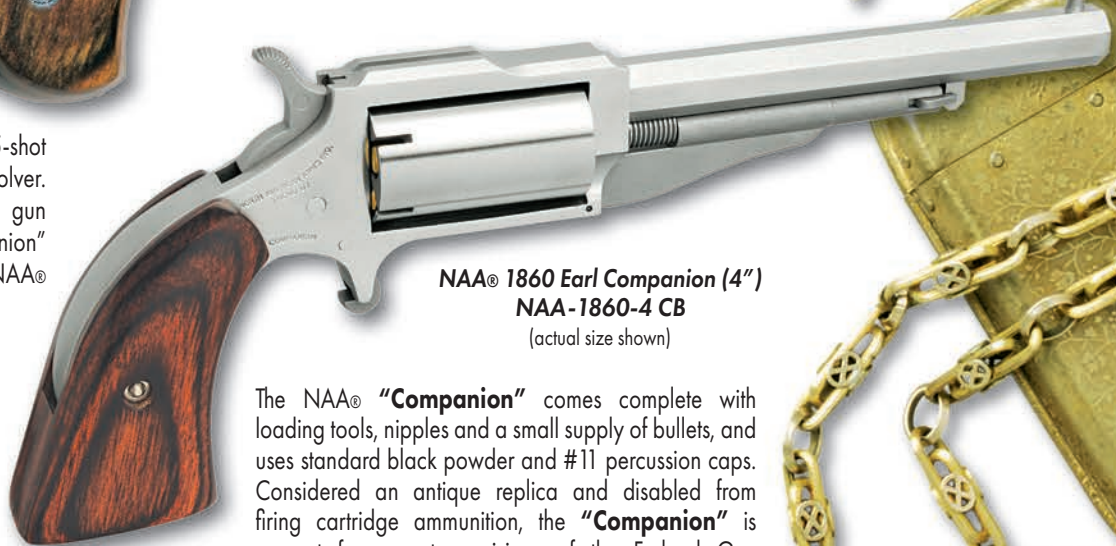
NAA® .22 COMPANION (CAP & BALL)



NAA® Long Rifle (1 1/8") Cap & Ball
NAA-22LR CB
(actual size shown)



NAA® Magnum (1 5/8") Cap & Ball
NAA-22M CB
(actual size shown)



NAA® 1860 Earl Companion (4")
NAA-1860-4 CB
(actual size shown)

The NAA® "Companion" is a 5-shot percussion (Cap & Ball) mini-revolver. Engineered by the legendary gun designer Dick Casull, the "Companion" can be complimented with most NAA® grip and holster accessories.

The NAA® "Companion" comes complete with loading tools, nipples and a small supply of bullets, and uses standard black powder and #11 percussion caps. Considered an antique replica and disabled from firing cartridge ammunition, the "Companion" is exempt from most provisions of the Federal Gun Control Act.

The NAA® "Earl Companion" sports a 4" barrel & faux loading lever.



NAA® .22 MINI-MASTER & BLACK WIDOW

NAA® Mini-Master (4")
NAA-MMTM
 (actual size shown)



NAA® Black Widow (2")
NAA-BWM
 (actual size shown)

CRK Black Coating
NAA-BWM-CRK
 Also known as the
 "True Black Widow"

The NAA® "Mini-Master" family is a group of magnum framed mini-revolvers which sport a heavier, vented barrel and a bull (non fluted) cylinder. The 4-inch barrel "Mini-Master" and 2-inch barrel "Black Widow" models have oversized rubber grips and either fixed or adjustable 3 dot sights, which makes these guns great "plinkers". Can be fitted with an optional .22LR conversion cylinder assembly.

NAA® .22 PUG



NAA-PUG-T
1" Barrel
 (actual size shown)

White Dot Sight
 PUG only

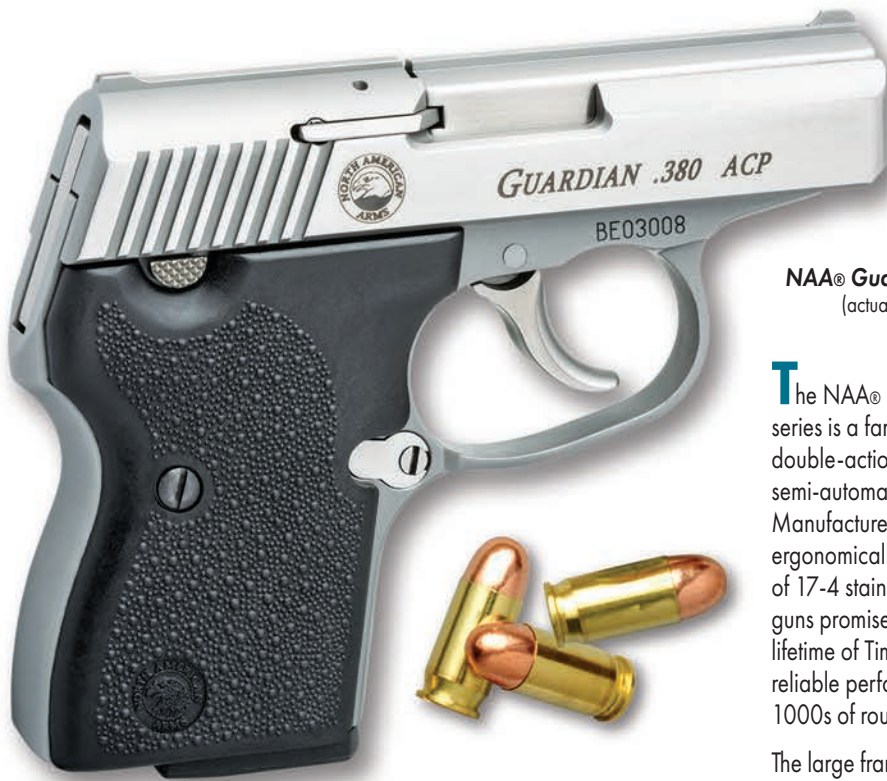
Tritium Sight
 PUG only

NAA® PUG Ported
 Tritium/White Dot
 NAA-PUG-TP/DP

The "PUG" is a stocky companion with remarkable balance that delivers a bite even worse than its bark. The "PUG" has a softer, rubber cobble stone textured grip enabling the handler to keep a firm leash on this pocket-sized puppy. The XS target system with white dot sight (tritium optional) provides a quick sight picture to allow the handler to direct the bite. Stout and sturdy, the "PUG" pedigree is pure North American Arms®. Can be fitted with an optional .22LR conversion cylinder assembly.



NAA® GUARDIAN .380 ACP



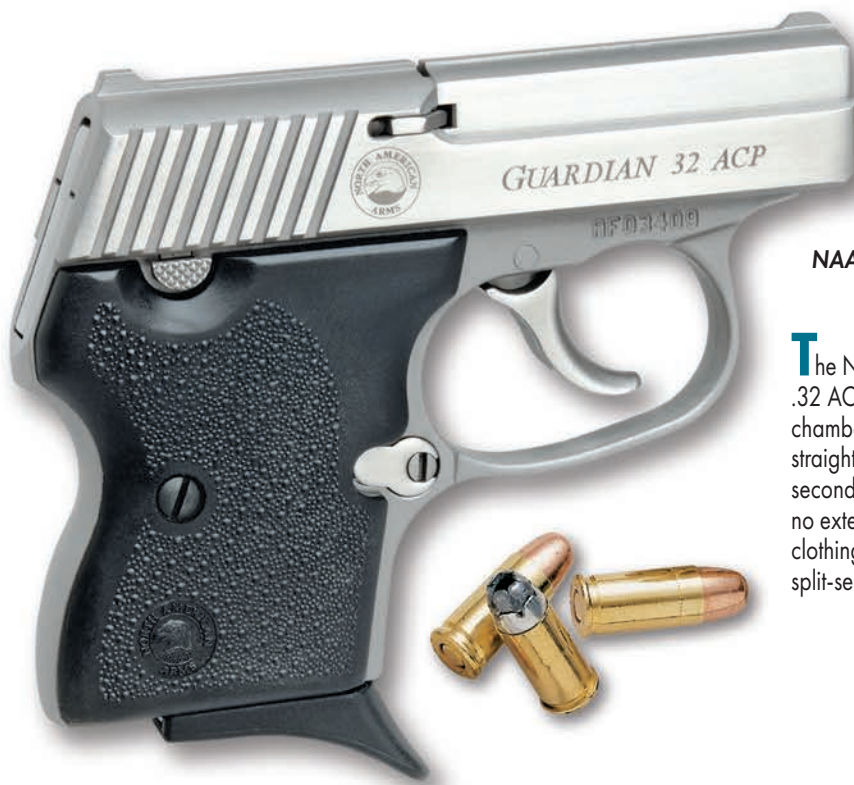
NAA® Guardian .380 ACP
(actual size shown)

The NAA® "Guardian" series is a family of 6+1 double-action-only (DAO) semi-automatic pistols. Manufactured on an ergonomically-designed frame of 17-4 stainless steel, these guns promise to deliver a lifetime of Timex-like rugged, reliable performance over 1000s of rounds.

The large frame model is chambered in .380 ACP.



NAA® GUARDIAN .32 ACP



NAA® Guardian .32 ACP
(actual size shown)

The NAA® "Guardian" .32 ACP is a smaller frame chambered in .32 ACP, with a straight-blowback operation, second strike capability and no external safeties to snag clothing or interfere with split-second functionality.



The Guardian Accessories allow you to custom design the way your gun can look, feel and carry.

FINISHES

***CS32/CS380-HPSB:** High polished, slide and barrel only.

***CS32/CS380-HPA:** High polished, appointment only.

***CS32/CS380-FM:** Full matte, bead-blasted stainless steel, entire gun.

CARRY PACKAGE

CS32/CS380-CP: Melt Down / De Horned, rounded smooth edges for comfortable pocket carry.

SIGHTS

(High Polish & Carry Package not available with sights)

S32/S380-ASHBT: XS sight, big dot, Tritium.

***S32/S380-ASHB:** XS sight, big dot, white.

S32/S380-ASHST: XS sight, standard dot, Tritium.

***S32/S380-ASHS:** XS sight, standard dot, white.

S32/S380-NKT: Novak sight, 3 dot Tritium.

***S32/S380-NKWD:** Novak sight, white 3-dot.

MACHINING

CS32/CS380-FSF: Stippling, front of magazine well.

CS32/CS380-FSB: Stippling, back of magazine well.

CS32/CS380-FST: Stippling, front of trigger guard.

CS32/CS380-FSP: Stippling package, (includes all three).

SLIDES

CS32/CS380-SFS: Forward slide serrations.

CS32/CS380-SCL: Scalloped slide serrations.

GRIPS

G32/G380-CBW-C: Coco Bolo wood, checkered.

G32/G380-CBW: Coco Bolo wood, smooth contoured.

G32/G380-MPW: White simulated pearl.

*(Items not shown)

** (not for .32NAA)

Specify the part # for either the .32 Guardian or the .380 Guardian.

NAA® GUARDIAN FINISH & SIGHTS



Stainless Steel
High Polish



Meltdown/Dehorned
CS32 CS380-CP



S32/S380-ASHBT



S32/S380-ASHST



S32/S380-NKT

NAA® GUARDIAN FINISH & SIGHTS



Frame Stippling
on both
Guardian lines



Forward Slide Serrations
for both Guardian lines



Scalloped Texture
for both Guardian lines

NAA® GUARDIAN FINISH & SIGHTS



G32/G380-CBW-C



G32/G380-CBW



G32/G380-MPW

NAA® GUARDIAN HOLSTERS



HIP-32/380D



HPT-32/380MRC



HSS-380
(Right only)

HOLSTERS

HIP-32/380D-(L/R): Bell Charter-Oak, English bridle leather, inside the pant clip holster.

HPT-32/380MRC: Mitch Rosen, cow hide rough side out, pocket holster.

HSS-380: DeSantis, strong side leather holster, right only. (.380 line only)

HAN-380: DeSantis, Neoprene Ankle Holster. (Both Guardian lines)

MAGAZINES, SCREWS, POUCH

MZ-FPK: 2 finger rest extensions, for .32, .380 ACP.

MZ-32-EXT: 10 round magazine, .32 ACP, FMJ or ball ammo only.

MZ-32: .32 Magazine, with flat floor plate.

***MZ-380:** .380 Magazine, with flat floor plate.

***MZ-380-EXT:** 10 round magazine, .380 ACP, FMJ or ball ammo only.

MZ-32-FR: .32 Magazine finger rest floor plate.

***MZ-380-FR:** .380 Magazine finger rest floor plate.

GS-SS: Slotted, stainless steel grip screws with rubber washers (2).

GS-SH: Stainless steel, hex head grip screws with rubber washers (2), wrench included.

RUG-G-(L/R): DeSantis, Nylon Clip Rug.

PMZ: Magazine pouch, holds (2) magazines with or without finger rest.

**(Items not shown)*

(L/R-specify left or right hand)



HAN-380
Fits both Guardian lines

NAA® MAGAZINES & SCREWS

NAA® GUARDIAN POUCH



MZ-FPK
*MZ-FPK-MR

MZ-32
*MZ-380



MZ-32-EXT
*MZ-380-EXT



RUG-G
Fits both
Guardian
lines



PMZ



MZ-32-FR
*MZ-380-FR



GS-SS



GS-SH

Screws fit both
Guardian lines

NAA® .22 HOLSTERS

HAS: Ankle holster, black nylon, smooth texture.

Fits all NAA® Mini-Revolvers.

H1860-4BR-(L/R) (BL): Earl full flap military-field style belt loop holster, brown or black leather. Fits NAA® Earl 4" barrel. Does not fit Earl 6" Hogleg.

HF-M: Military-field style full flap holster, dyed through tan leather. (RH only). Fits NAA® .22 M/MS only.

***HF-L:** Fits NAA® .22 LR Frame Mini-Revolvers.

H1860-4WBR-(L/R): Earl basket weave belt loop holster, hammer tie down, wet molded brown leather. Belt loop accepts 1" to 1 1/2" belts. Fits NAA® Earl 4" barrel. Does not fit Earl 6" Hogleg.

HBW-BW: Black Widow basketweave cross draw belt loop holster, hammer tie down. Wet molded brown leather for Black Widow only.

***HBW-SW:** Wet molded for Sidewinder only.

***HBW-M:** Wet molded for .22 M/MS only.

HIP-L-BL-(L/R)(BR): Inside the pant, black or (BR brown) leather with metal clip.

Fits NAA® .22 Long Rifle Frame Mini-Revolvers.

HIP-R-BL-(L/R)(BR): RANGER II inside the pant holster, black or (BR brown) leather with metal clip. Fits NAA® RANGER II Break-Top and Sidewinder 1 1/2" barrel only.

HIP-M-BR-(L/R)(BL): Inside the pant holster, brown or (BL black) leather with stainless steel clip. Fits NAA® .22 M/MS only.

HIP-AFBR-M (BL): Alligator skin inside the pant pocket holster, brown or black with metal clip. Fits NAA® .22 M/MS.

HPT-AFBR-M (BL): Alligator skin pocket Holster, brown or (BL black) with ammo pouch. Fits NAA® .22 M/MS.

HLS-PTCD-(L/R): DeSantis Lil-Shot Pug, cross draw wet molded tan holster. Fits Pug and Sidewinder.

***HLS-RTCD-(R):** Fits NAA® RANGER II, right only.

HPK-L: Pocket holster, black nylon with ammo pouch. Fits NAA® .22 Long Rifle & .22 Short Frame.

HPK-M: DeSantis Pocket Holster, black nylon with ammo pouch. Fits NAA® .22 M/MS only.

HPK-BW: DeSantis pocket holster, black nylon with ammo pouch. Fits NAA® 2" barrel Black Widow, Pug & Sidewinder.

HPTD-M: DeSantis pocket holster, suede tan leather with ammo pouch. Fits NAA® .22 M/MS only.

***HPTD-L:** Fits Long Rifle Frame.

***HPTD-PUG:** Fits Pug & Sidewinder.

HIP-PUG-(L/R): Pug DeSantis inside the pant holster, black leather with metal clip. Fits NAA® Pug & Sidewinder.

HCD-M: Cross draw carry holster, wet molded tan leather. Accepts 1 1/2" belts. Fits NAA® .22 M/MS only.

***HCD-L:** Fits NAA® .22 Long Rifle Mini-Revolvers.

HCD-250: DeSantis cross draw carry holster, black wet molded leather. Fits .22 Mag. 2 1/2" barrels.

HIP-250: DeSantis inside the pant holster, black leather with metal clip. Fits .22 Mag. 2 1/2" barrels.

HCD-BW: Black Widow DeSantis holster, black wet molded leather. Fits 1 1/2" belts. Fits NAA® .22 Black Widow 2" barrel only.

HMM-2-(L/R): Open muzzle inside the pant holster, smooth leather with metal clip for 1 3/4" belts. Fits NAA® Black Widow 2" barrel, Sidewinder & Sheriff.

HMM-4-(L/R): Open muzzle inside the pant holster, smooth leather with metal clip for 1 3/4" belts. Fits NAA® Mini-Master 4" barrel, Earl 4" & Sidewinder 4".

HSH-L: Horizontal carry shoulder holster, smooth natural brown leather. Fits NAA® .22 Long Rifle Frame & Short Mini-Revolvers.

***HSH-M:** Fits NAA® .22 M/MS only, not shown.

HSV: Vertical carry shoulder holster, black leather with nylon harness. Fits all Mini-Revolvers.

RUG-N: Large zippered gun pouch, 9" black nylon. Fits Mini-Master, Black Widow & Earl.

RUG-F: Small zippered gun pouch, 6-1/2" black nylon. Fits .22 M/MS, Long Rifle & Short.

*(Items not shown)

*(L/R - specify left or right hand)



NAA® .22 CUSTOM CARRY



NAA® .22 GRIPS



NAA® .22 PROMOTIONAL & DISPLAY



NAA® SAFETY CYLINDER & WARRANTY

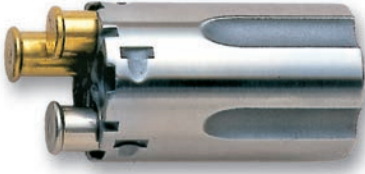


North American Arms® mini-revolvers are equipped with Safety Cylinders which include notches milled between the chambers. When the blade of the hammer is securely lowered into one of these notches, the handler enjoys both full 5-shot capacity and maximum protection against accidental discharges. When the hammer is cocked, the cylinder automatically rotates into battery.

The traditional half-cock position is a (un)loading aid only and does NOT constitute a safety. NAA® mini-revolvers should NEVER be carried with the hammer over the rim of a live cartridge.

All NAA firearms enjoy a Lifetime Warranty. Older NAA® mini-revolvers can have a Safety Cylinder factory-installed free of charge. Please contact NAA® Customer Service at 1-800-821-5783 for further details.

NAA® CONVERSION CYLINDER



Long Rifle Conversion Cylinder for the .22 Magnum, RANGER II, Sidewinder, Pug, Wasp & Ported Mini-Revolvers; fluted.

All mini-revolvers built on Magnum frames can be fitted with an additional Conversion Cylinder which will enable you to safely fire Long Rifle (and Short) ammunition from a Magnum gun. Long Rifle ammunition should NOT be fired from a Magnum cylinder. This cylinder needs to be fitted at the factory to assure proper timing of the gun.



Long Rifle Conversion Cylinder for the Mini-Master, Black Widow, & Earl-Sheriff series; non-fluted.

NAA® GUN SPECIFICATIONS

Model No.	Caliber	Magazine Capacity	Length	Height	Width	Weight Empty	Weight Loaded	Barrel Length	Sights	Rifling
NAA® Guardian .380	.380 ACP	6	4 13/16"	3 11/16"	15/16"	18.4 oz.	20.4 oz.	2 1/2"	Low Profile Fixed	1 in 15" RH, 6 Groove
NAA® Guardian .32	.32 ACP	6	4 3/8"	3 3/8"	13/16"	14 oz.	15.6 oz.	2 13/16"	Low Profile Fixed	1 in 15" RH, 6 Groove
	7.65 Browning									
Model No.	Caliber	Cylinder Capacity	Length	Height	Width	Weight	Barrel Length	Sights		
NAA-22S	.22 Short Rimfire	5	3 5/8"	2 3/8"	7/8"	4 oz.	1 1/8"		Half Moon Fixed	
NAA-22LR/LLR	.22 LR Rimfire	5	4" / 4 1/2"	2 3/8"	7/8"	4.6 oz. / 4.8 oz.	1 1/8" / 1 5/8"		Half Moon Fixed	
NAA-22MS/M	.22 Mag. Rimfire	5	4 5/8" / 5 1/8"	2 13/16"	1 1/16"	6.2 oz. / 6.5 oz.	1 1/8" / 1 5/8"		Half Moon Fixed	
NAA-22M-R/250/4	.22 Mag. Rimfire	5	5 1/16" / 6 5/16" / 7 3/4"	2 7/8"	1 1/16"	6.9 oz. / 7.9 oz. / 8.8 oz.	1 1/2" / 2 1/2" / 4"		Bead Front Fixed	
NAA-SW/250/4	.22 Mag. Rimfire	5	5" / 6 5/16" / 7 3/4"	2 7/8"	1 1/16"	6.7 oz. / 7.7 oz. / 8.5 oz.	1 1/2" / 2 1/2" / 4"		Bead Front Fixed	
NAA-22M-P/TW	.22 Mag. Rimfire	5	4 5/8" / 5 1/8"	2 13/16"	1 1/16"	6.5 oz.	1 1/8" / 1 5/8"		Bead Front Fixed	
NAA-Pug-T/D	.22 Mag. Rimfire	5	4 9/16"	2 13/16"	1 1/16"	6.4 oz.	1"		Tritium/White Dot	
NAA-BWM/BWMA/CRK	.22 Mag. Rimfire	5	5 7/8"	3 11/16"	1"	8.9 oz.	2"		Fixed/Adjustable	
NAA-MMM/MMTM	.22 Mag. Rimfire	5	7 7/8"	3 11/16"	1"	10.8 oz.	4"		Fixed/Adjustable	
NAA-1860-250	.22 Mag. Rimfire	5	6 5/16"	3 1/8"	15/16"	7.7 oz.	2 1/2"		Stainless Steel Post	
NAA-1860-3/4/6	.22 Mag. Rimfire	5	6 3/4" / 7 3/4" / 9 3/4"	3 1/8"	15/16"	8.3 oz. / 8.9 oz. / 9.7 oz.	3" / 4" / 6"		Stainless Steel Post	
NAA-22LR CB	.22 LR #11 Percussion	5	4"	2 3/8"	7/8"	5 oz.	1 1/8"		Half Moon Fixed	
NAA-22M CB	.22 Mag. #11 Percussion	5	5 1/8"	2 13/16"	1 1/16"	7.2 oz.	1 5/8"		Half Moon Fixed	
NAA-1860-4 CB	.22 Mag. #11 Percussion	5	7 3/4"	3 1/8"	15/16"	9.6 oz.	4"		Stainless Steel Post	



Convenient...
Reliable...
Effective!



Additional information about the company and its products can be found at:

NORTH AMERICAN ARMS®, INC.

2150 South 950 East • Provo, Utah 84606-6285
(801) 374-9990 • Fax (801) 374-9998 • 1-800-821-5783

www.NorthAmericanArms.com

(Check NAA® website for current pricing - pricing subject to change without notice and recently added or discontinued items.)

⚠️WARNING: This product contains (one or more) chemicals including lead, known to the State of California to cause (Cancer and) birth defects or other reproductive harm. For more information go to www.P65Warnings.ca.gov (Wash hands after handling).



Scan for Accessories



Facebook.com/NorthAmericanArms



Twitter:@NAAMiniRevolver



<https://www.instagram.com/northamericanarms/>