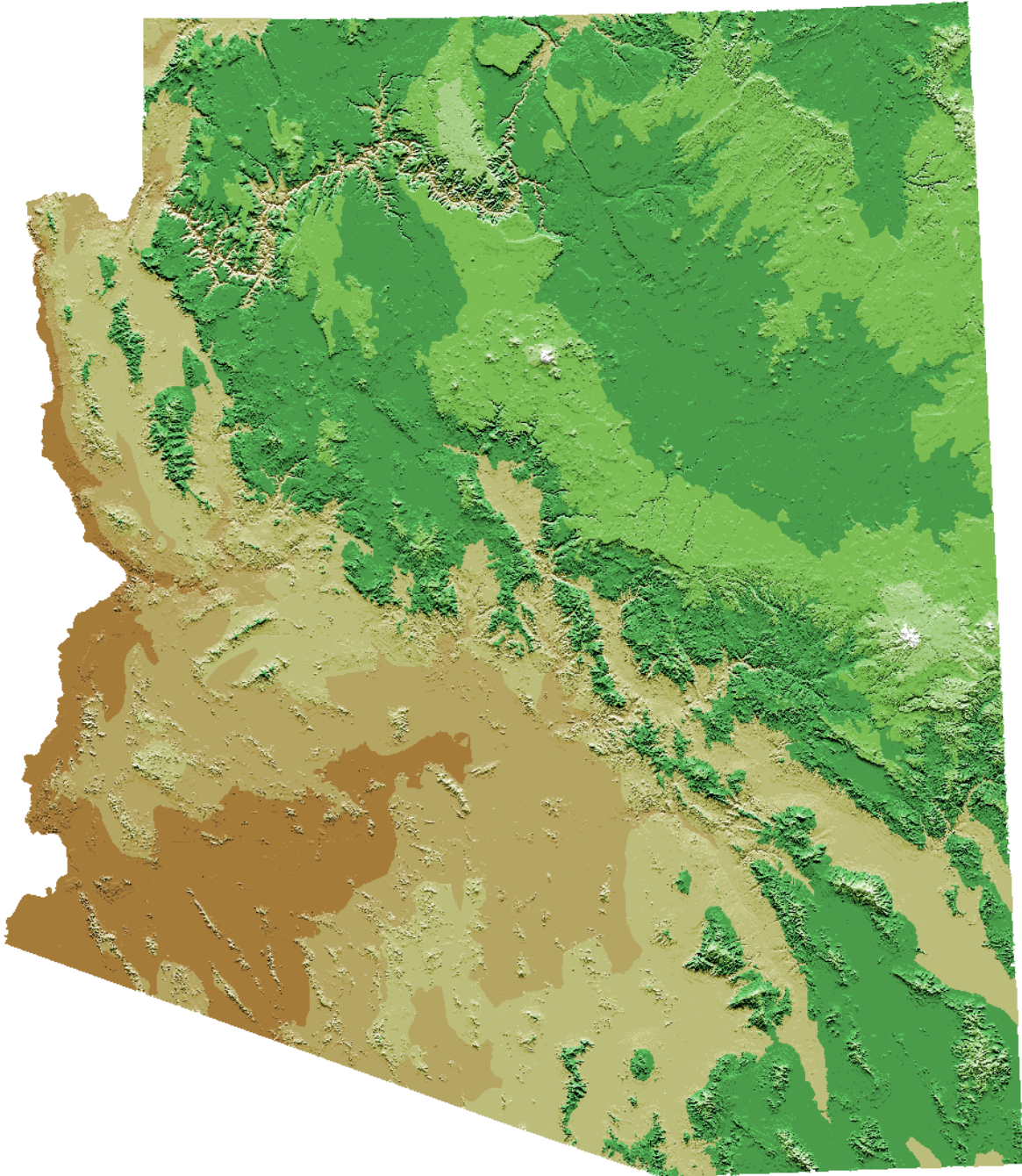


## Physical Map

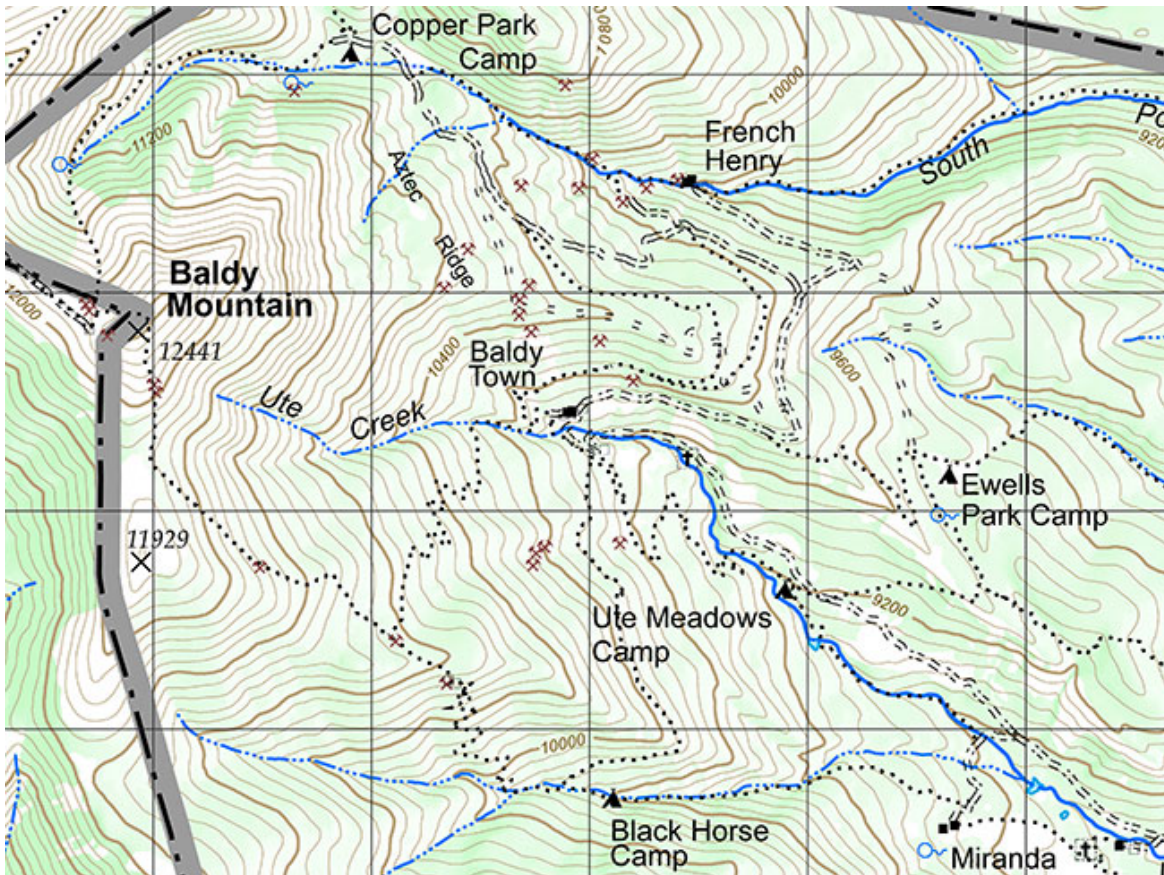
**A physical map** shows physical features on the earth's surface such as mountains, plains, rivers, oceans, deserts and forests. Physical maps are used for locating these natural features.



USGS

## Topographic Map

**A topographic map** shows points of equal elevation. The closer the lines are together, the steeper the elevation is. Topographical maps can be used for planning hikes or where to build a building on flat ground.



<https://boyslife.org/outdoors/outdoorarticles/50154/how-to-read-a-topo-map/>



## Economic or Resource Map

An **economic or resource map** shows where resources (materials that people can use) are located in a region. Some of the natural resources can be forests, iron and other metals, oil, and water. Other resources are developed by humans such as manufacturing, livestock production, crops, and energy. Resource maps help conservation experts and land managers plan for the future and protect natural resources. Developers, miners, and energy departments use these maps to locate resources and plan for their use.



<https://maps-russia.com/russia-resources-map>

## Political Map

**A political map** shows boundary lines around countries, states, and cities. Political maps are used for seeing the size and location of these areas. Political maps may show human features like parks, monuments, and other places to visit.



<http://mapsof.net/kenya/kenya-political-map>



## Road Map

A road map shows the boundaries for towns, cities, countries, and states. Road maps show how people can travel between these locations. Whether electronic or paper, road maps are still used by everyone to get from one place to another especially if they don't already know the route.

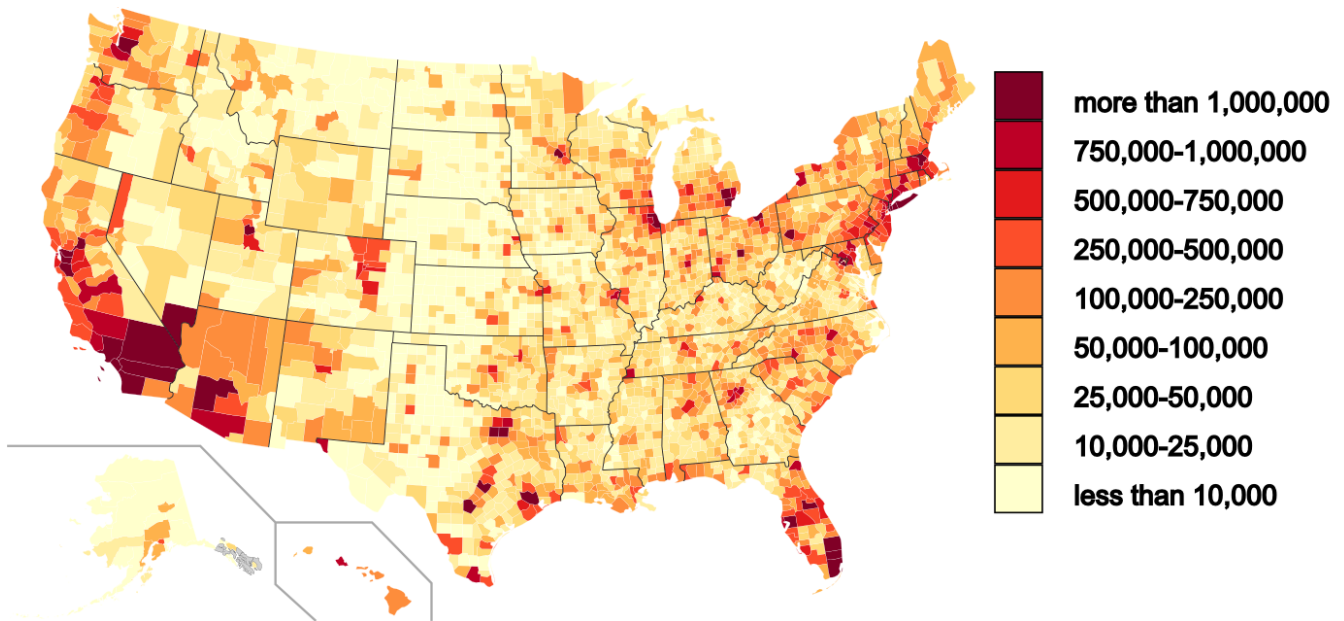


<https://www.tripinfo.com/maps/ga>

## Population Map

**A population map** shows where and how many people are in an area. Population maps can be used to understand the changes in population and how to plan for civic and economic needs. Government agencies use these maps to provide protection for citizens (police and fire), adequate health facilities, new roads, water and sewage systems, as well as many other public necessities. Businesses also use these maps to determine where to sell their products and create more stores.

Number of People per County

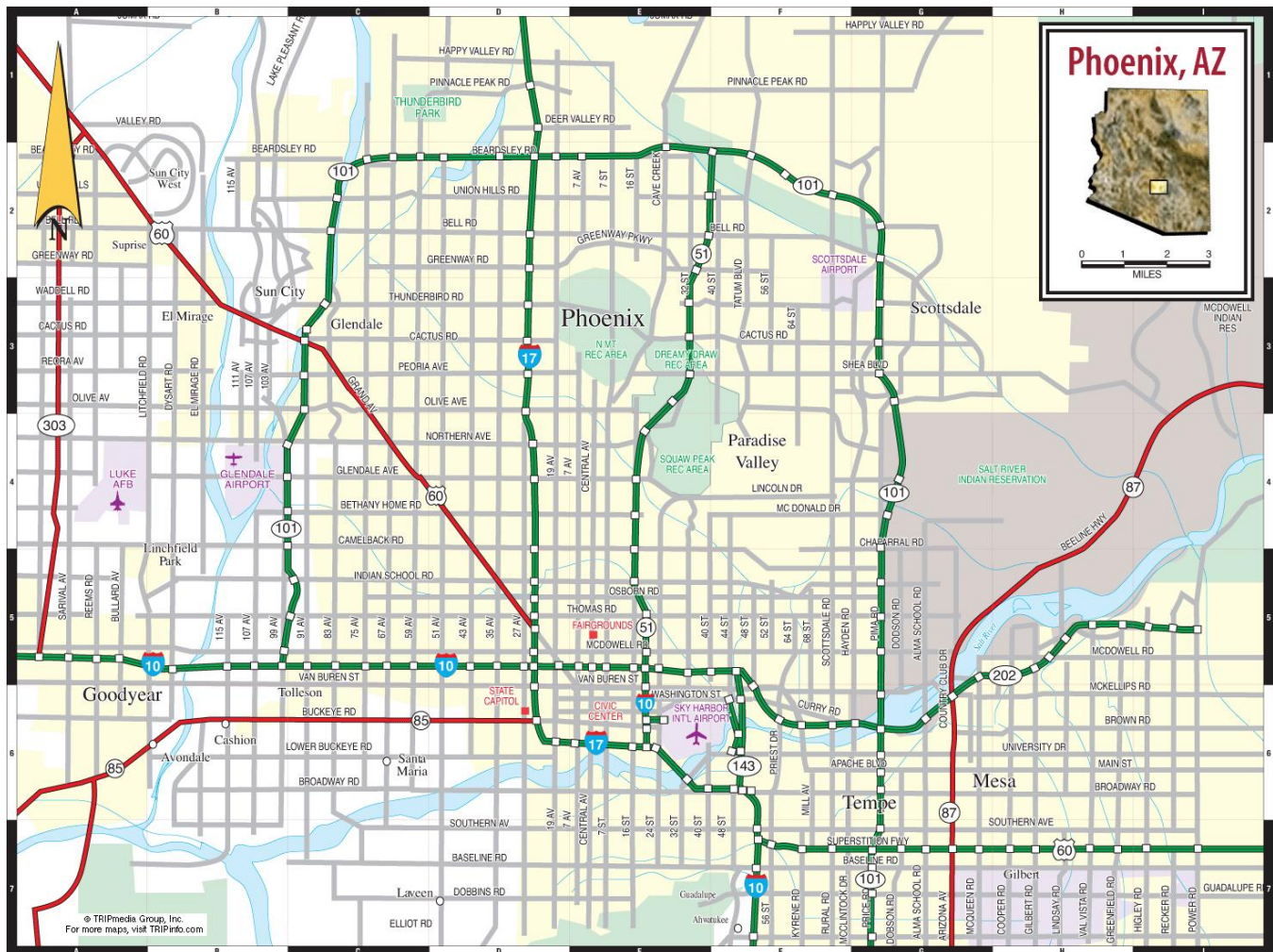


<http://weather.ou.edu/~jwgodwin/populationmaps.html>



## City Map

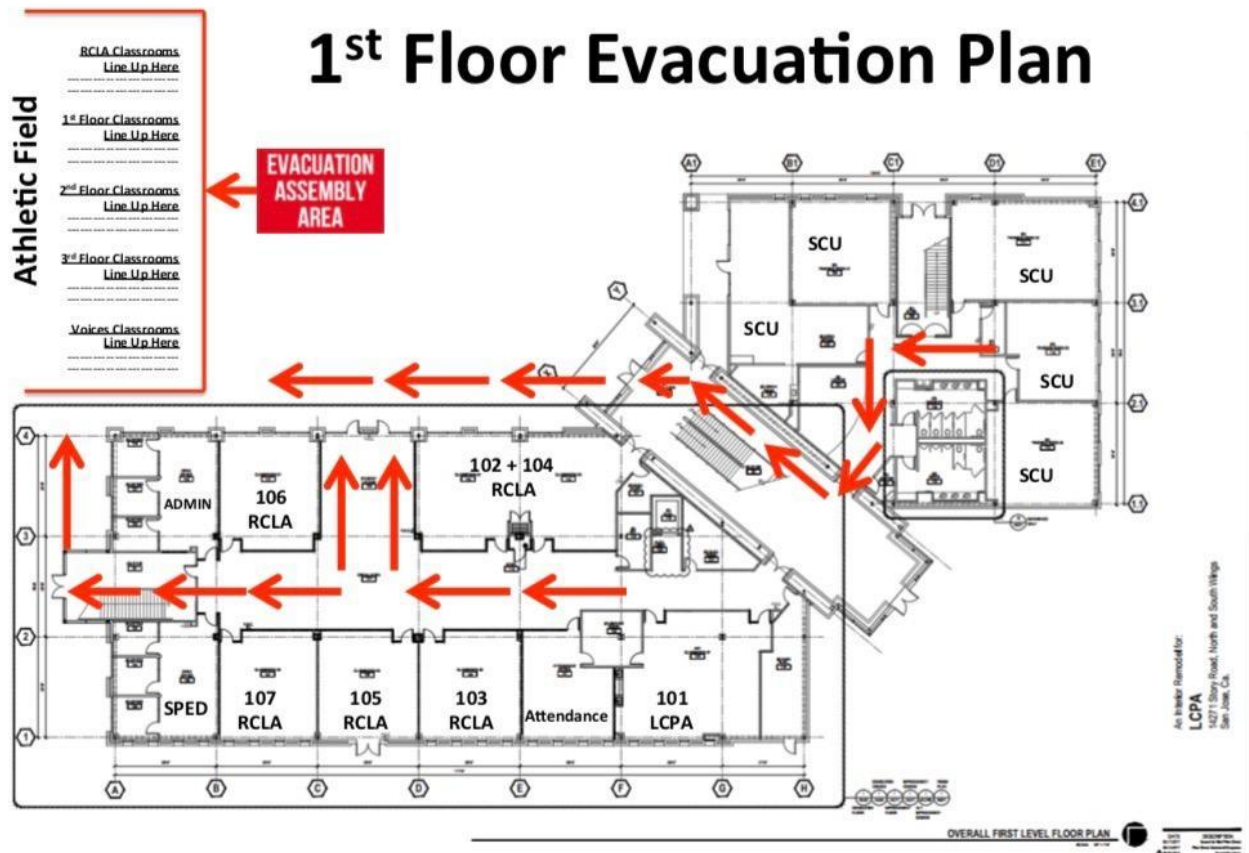
**A city map** shows the landmarks and routes of a city as well as major attractions such as shopping malls, medical centers, civic buildings, and airports. City maps are useful for finding your way around a city. City maps (electronic or paper) introduce visitors and residents to the businesses, museums, parks, other attractions in the area. City maps are essential for finding places when you only have an address.



<https://maps-phoenix.com/map-of-phoenix-arizona>

## Evacuation Map

**An evacuation map** shows an escape route (exit) from an area, building, or room during an emergency like a fire. These maps are usually posted on a wall of each room in a building with arrows showing the quickest way out of the building. Schools, hotels, hospitals, and other establishments are required to have such maps. This is for the safety of the occupants.



[https://www.sjlcpa.org/apps/pages/evacuation\\_maps](https://www.sjlcpa.org/apps/pages/evacuation_maps)



## Aerial or Satellite Photographs/Maps

**Aerial or Satellite Photographs/Maps** show physical and human features. They are taken from airplanes, satellites, or drones. From high in the air, much territory can be seen. These maps are used by government officials and the military to plan for development of areas or to provide information for soldiers. Developers and city planners use these maps to analyze an area for growth potential (new roads, buildings, businesses). Environmentalists can look at the earth and see changes in the vegetation, water supply, and air quality. Aerial maps can show how a place has changed during the years when a series of maps are analyzed.



<https://www.loopnet.com/Listing/960-N-Scottsdale-Rd-Tempe-AZ/13229855/>