

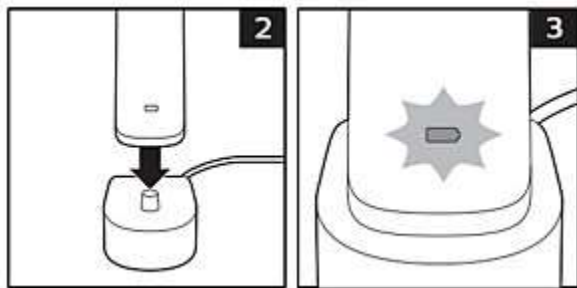
How to charge my Phillips Sonicare Toothbrush

Depending on the model you have, you can charge your Philips Sonicare Toothbrush with a normal charger, charging glass, travel case or charging pad. Find out how to charge your Philips Sonicare Toothbrush.

Charging your Philips Sonicare Toothbrush

1. Plug the charger in a live outlet
2. Place the handle on the charger
3. The battery indicator will start flashing to indicate that your toothbrush is charging.

The battery indicator stops flashing when your toothbrush is fully charged. It can take up to 24 hours before your toothbrush is fully charged.

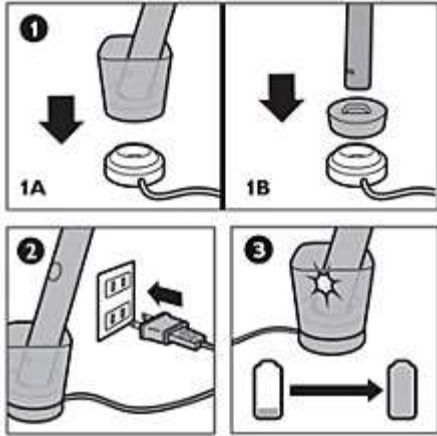


Charging your DiamondClean Toothbrush with the charging glass

Follow these instructions on how to charge your DiamondClean or DiamondClean Smart Toothbrush with the charging glass

1. Place the handle in the charging glass or stand and place it on the charging base
2. Plug the charging base in an outlet
3. The battery indicator will start flashing white or green to indicate that your toothbrush is charging.

The battery indicator stops flashing when your toothbrush is fully charged. It can take up to 24 hours before your toothbrush is fully charged.

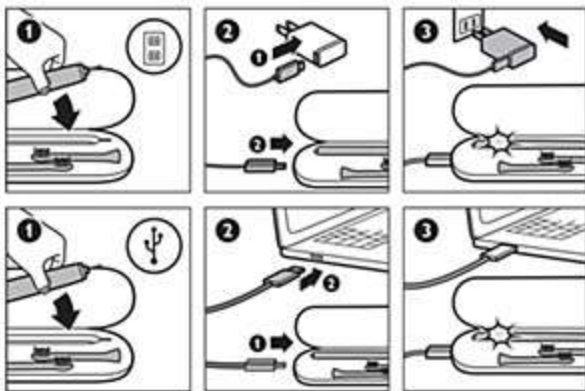


Charging your DiamondClean Toothbrush with the travel case

Follow these instructions on how to charge your DiamondClean or DiamondClean Smart Toothbrush with the travel case

1. Place the handle in the travel case
2. Connect a mini USB cable from the travel case to the USB adapter or a laptop
3. Some models come with a build in USB cable which is located at the bottom of your travel case.
4. The battery indicator will start flashing white or green to indicate that your toothbrush is charging

The battery indicator stops flashing when your toothbrush is fully charged. It can take up to 24 hours before your toothbrush is fully charged.



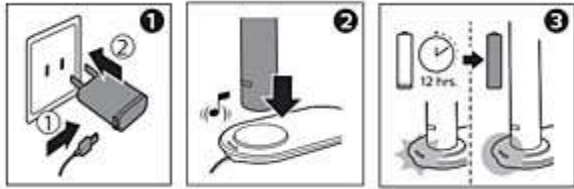
Charging your DiamondClean Toothbrush with the charging pad

Follow these instructions on how to charge your DiamondClean Toothbrush on the wireless charging pad.

1. Plug the USB cable into the wall adapter and plug into a live outlet
2. Place the handle on the raised surface of the charging pad

3. The charging pad beeps and the battery indicator will start flashing white to indicate that your toothbrush is charging.

The battery indicator stops flashing and turns solid white when your toothbrush is fully charged. It can take up to 12 hours before your toothbrush is fully charged.



How to change modes or intensity settings of my Philips Sonicare toothbrush

Find out how to change the intensity settings or brushing modes of your Philips Sonicare toothbrush. Find the settings that fit your brushing experience.

Instructions to change intensity settings

To change the intensity settings of your Philips Sonicare toothbrush, follow these simple steps:

1) Turn **on** your Sonicare toothbrush

1. Press the **mode button** (or the power button if you do not have a mode button) to change and select the preferred brushing mode
- 3) Your Philips Sonicare toothbrush will remember the selected intensity settings for your next brushing session.

Tip: change the intensity settings before rinsing the brush head or applying toothpaste.

Instructions to change and select brushing modes

To change the brushing modes of your Philips Sonicare toothbrush, follow these simple steps. Please note that not all Philips Sonicare toothbrush models have brushing modes available.

1. Turn **off** your Philips Sonicare toothbrush
2. Press the **mode button** (or the power button if you have a Philips Sonicare DiamondClean) to change and select the preferred brushing mode
3. Your Philips Sonicare toothbrush will remember the selected mode for your next brushing session.

How do I charge my Philips Sonicare toothbrush

Charging the battery of your Philips Sonicare toothbrush is easy as 1-2-3. Find out how to charge your Philips Sonicare toothbrush properly.

Most Philips Sonicare toothbrushes

- 1) Plug the charger into a live electric power outlet
- 2) Place the handle on the charger
- 3) The flashing light on the handle indicates that the toothbrush is charging
- 4) It takes at least 24 hours to fully charge the battery

Please note:

- In step 3 above, if the battery charge indicator on the handle does not blink green, you may not have the charger plugged into a live outlet. To confirm that the charger is plugged into a live outlet, press the on/off button while the handle is sitting on the charger.
- The handle should not activate when it is charging in a normal manner. If the handle turns on in the charger, repeat steps 1 - 3 using a different power outlet. If you repeat the procedure and your handle continues to activate while on the charger, contact the Philips call center for instructions

Charging your Philips Sonicare DiamondClean and DiamondClean Smart toothbrush

- 1) Plug the chrome base charger into a live electric power outlet
- 2) Place the glass on the chrome base
- 3) Place your Philips Sonicare DiamondClean or DiamondClean smart into the glass in an upright position
- 4) The flashing light on the handle indicates that the toothbrush is charging*. If the indicator does not start flashing, keep the handle in the charger for at least 10-15 minutes to allow the toothbrush to recover
- 5) It takes at least 24 hours to fully charge the battery

DiamondClean Smart toothbrushes (in addition to a flashing battery indicator) will also illuminate at the bottom and you will hear a beep.

Philips Sonicare PowerUp

For PowerUp, the procedure for checking to see if the handle is charging is different:

- 1) Plug the charger into an outlet that you know is a live outlet
- 2) Place the handle on the charger
- 3) If the battery is charging, the battery charge indicator will begin to flash green. With the handle on the charger, press the on/off button. The handle should not activate when it is charging in a normal manner
- 4) It takes approximately 30 hours to fully charge the battery

How to use my Philips Sonicare Toothbrush with braces

All Philips Sonicare Toothbrushes are suited for braces. Use this instructional video to brush your teeth with the Philips Sonicare Toothbrush while wearing braces.

Instructions to brush your teeth wearing braces

1. Wet the bristles of the brush head
2. Apply a small amount of toothpaste
3. Place the bristles against your teeth at a 45° angle
4. Press the power button to start brushing
5. First, brush above the brackets. Then below the brackets
6. Finally, clean between your braces with a circular motion

Please do not force the bristles into the gaps of your braces.

How to clean my Philips Sonicare toothbrush

Improve the lifespan of your Philips Sonicare Toothbrush and clean your toothbrush and brush heads regularly. View this instructional video on how to keep your toothbrush clean and healthy.

Instructions to clean your Philips Sonicare Toothbrush

Follow these simple steps to clean and maintain your Philips Sonicare Toothbrush. Never use the dishwasher to clean your toothbrush, brush head or charger.

****Cleaning your toothbrush after each use**

1. Rinse your brush head and bristles to remove toothpaste and food particles.
2. Wipe the entire surface of the handle with a damp cloth

Clean your toothbrush every week

1. Remove the brush head

2. Rinse the bottom of the brush head with warm water
3. Rinse the metal shaft area with warm water
4. Wipe the entire surface of the handle with a damp cloth

Note: Do not push on the rubber seal around the metal shaft with sharp objects, as this may cause water damage.