



21st Century School Buildings Program

Frederick Douglass High School & Joseph C. Briscoe Academy
COMMUNITY MEETING Feasibility Study | September 2, 2020

BALTIMORE CITY
PUBLIC SCHOOLS



Introductions

Renee Stainrod

Manager, Community & Public Relations
21st Century School Buildings Program

Ivy McNeil

Sr. Coordinator, Community & Public Relations
21st Century School Buildings Program

Dorothy Hellman

Executive Director
21st Century School Buildings Program

Michael McBride

Design Director
21st Century School Buildings Program

Scott McGovern and Andrew Persons

Architects
Design Collective

Tom Lee and Amy McCarty

Architects
Samaha Associates

Agenda

- **Introductions**
- **High School Plan Overview**
- **Looking Forward/Schedule**
- **Project Overview**
- **Existing Site**
 - **Challenges & Opportunities**
- **Existing Building**
 - **Challenges & Opportunities**
- **Community Engagement**
- **Feedback Q&A**
- **Next Meeting**

For SY2021, City Schools has:

- 37 programs serving 21,460 high school students in 34 buildings

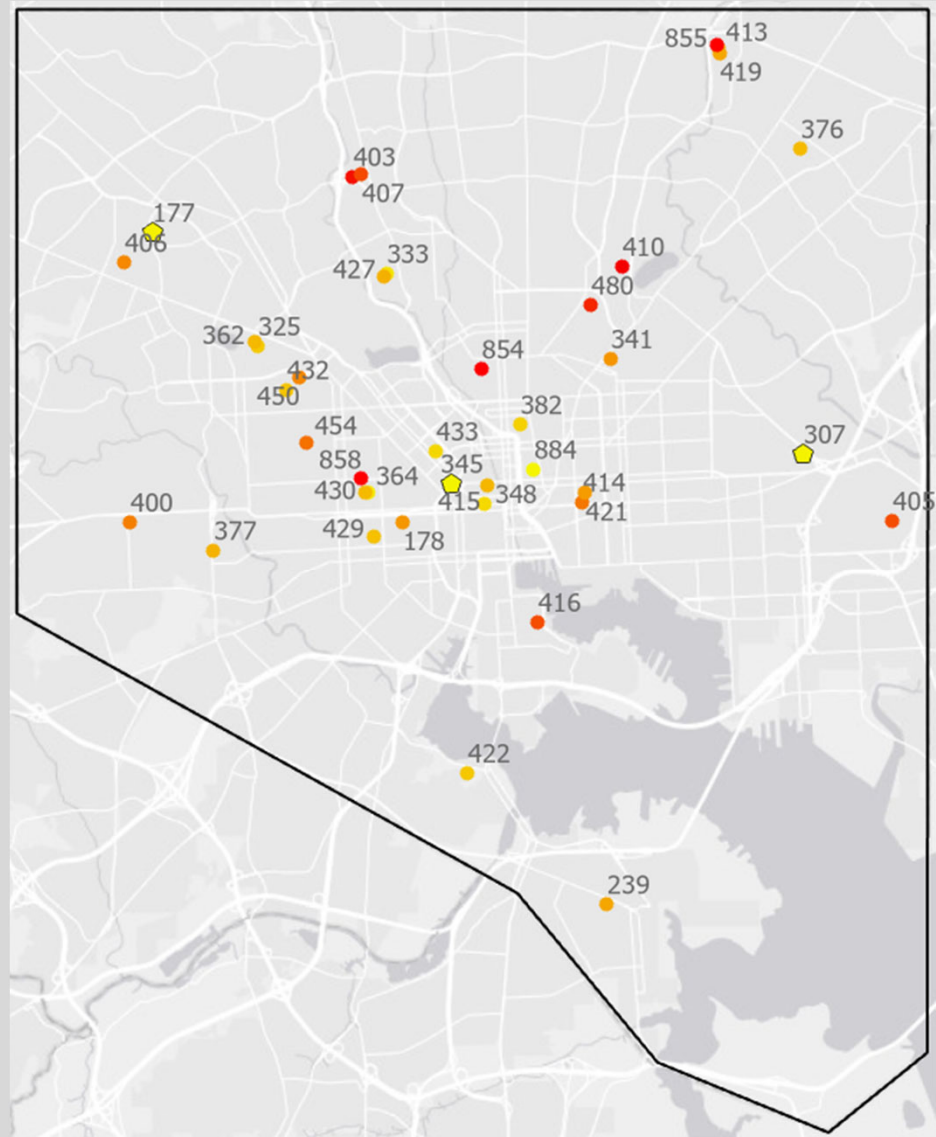
Students attend high school through:

The Choice process

- Students rank top 5 choices
- Some school entrances are based on criteria/audition/portfolio-based

21ST Century Program buildouts:

- ACCE and Independence
- Forest Park
- Fairmont-Harford, REACH!
- Patterson and Claremont High School



City Schools is focusing on high schools to:

- Maximize the impact to as many students, across as many communities as possible
- Increase the ability to offer robust academic programming that leads to college and career readiness

High schools are city-wide and serve students from across neighborhoods. Facilities that serve high school students are also significantly more expensive to fix than elementary and elementary/middle school facilities.

\$29 Million

Annual City Schools State CIP
Allocation for **150 buildings**

\$44 Million

ONLY systematic upgrades at **ONE**
high school

The disparity between the amount of annual capital funds City Schools receives and the high cost of repairing large high schools makes addressing the facility needs of those schools virtually impossible through regular capital funds. This is particularly difficult for historic buildings.

FREDERICK DOUGLASS

- 2nd oldest US high school created specifically to educate African Americans.
- Currently a non-entrance criteria high school located in a historically significant building in NW Baltimore.
- Is a popular choice for students in the Northwest area of the city.
- Former [Supreme Court Justice Thurgood Marshall](#) (1908–1993) is one of Douglass' most notable alumni.



JOSEPH C. BRISCOE ACADEMY

A separate public day school for middle and high school students with an LRE-F designation [Least Restrictive Environment - Public Separate Day School].

The needs of these students cannot be met in a general education program.

The holistic program at Joseph C. Briscoe Academy includes a schoolwide behavior management system, social-emotional learning curriculum, small student-teacher ratio, intensive therapeutic services, and rigorous academic instruction.



FREDERICK DOUGLASS & JOSEPH C. BRISCOE CO-LOCATION

- City Schools has intentionally focused on the inclusion of our separate public day schools to ensure these students have access to quality and healthy buildings.
- Thus, the plan is to relocate the Joseph C. Briscoe school to be housed in a renovated Douglass facility designed for a shared campus for two separate schools similar to Patterson and Claremont.
- Based on COMAR, these two programs must remain separate schools and thus the proposal is a co-location, **not a merger.**



Feasibility Studies: 6 – 8 months

July 2020 – February 2021
(dates subject to change)



September 2020

Meeting #1
Orientation

Review overall process & schedule. Confirm prior community input.

October 2020

Meeting #2
Essential Elements

Explore space options, infrastructure, interior pathways, accessibility.

November 2020

Meeting #3
50% Feasibility Study

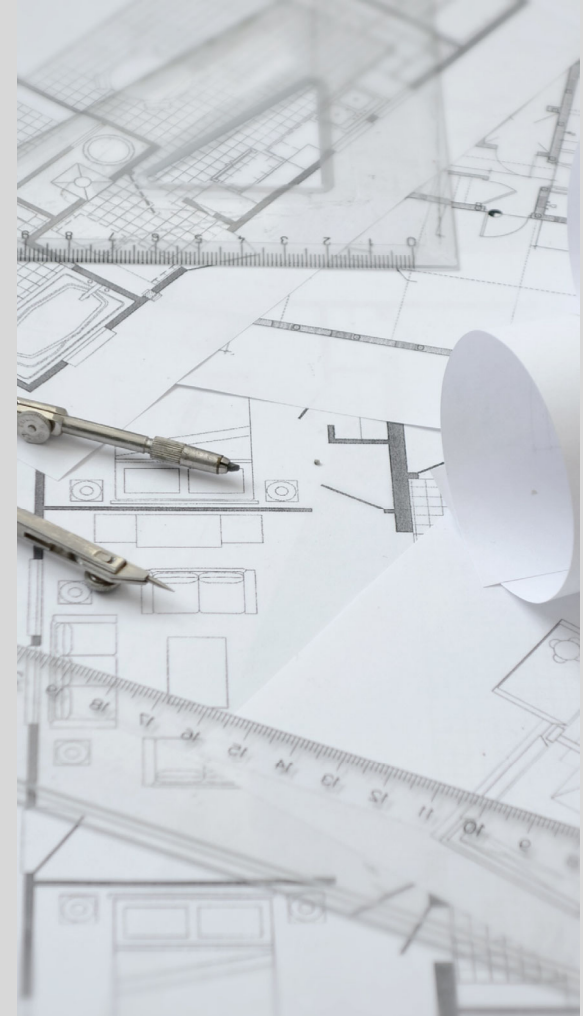
Review site and building options, pedestrian and vehicular access.

December 2020

Meeting #4
Feasibility Review

Comment on final building options, and recommendation.

- This feasibility study is being developed in conjunction with other City Schools high school feasibility studies. The funding for the projects is tied to the Built to Learn Act of 2020 (HB1/SB1), which passed during the 2020 legislative session but did not become law because it is tied to the enactment of the Kirwan legislation that was vetoed by the governor. The MD General Assembly can override the veto in upcoming session (starts January 2021). If the bill becomes law the district will renovate as many of the facilities as they can in order of the plan.
- As part of the process the design team will present options for review to City Schools staff and partners, the school community, and other stakeholders and will incorporate feedback as the team develops each option and present these at subsequent meetings.
- The purpose of the feasibility study is to determine the optimal location of all program elements within the building footprint, and on the site to serve as the basis for the design and for use in establishing the budget.
- The feasibility concept options will be developed based on the educational specification program prepared by 21st Century School Buildings program.



As part of the feasibility study, the design team was asked to look at 3 basic approaches for consideration:

1. Strategic Renovation

Reworking program within existing building footprint, conditions, and constraints

2. Renovation/Modernization

Upgrading existing building structure to meet adapting programmatic needs

3. Modernization with Addition

Upgrading existing building structure to meet adapting programmatic needs and expanding building footprint

The goal of the feasibility study is to determine which option best accomplishes the goals of the program.

CHALLENGES / OPPORTUNITIES

1. Safety and security
2. Providing individual identity to both Frederick Douglass and Joseph C. Briscoe
3. Easy, intuitive, and effective access and flow throughout the building
4. Resolve vehicular and pedestrian traffic issues on site and in the neighborhood
5. Site and building accessibility (ADA)

Existing Conditions

Site – Aerial Photograph



Existing Conditions

Site Photographs



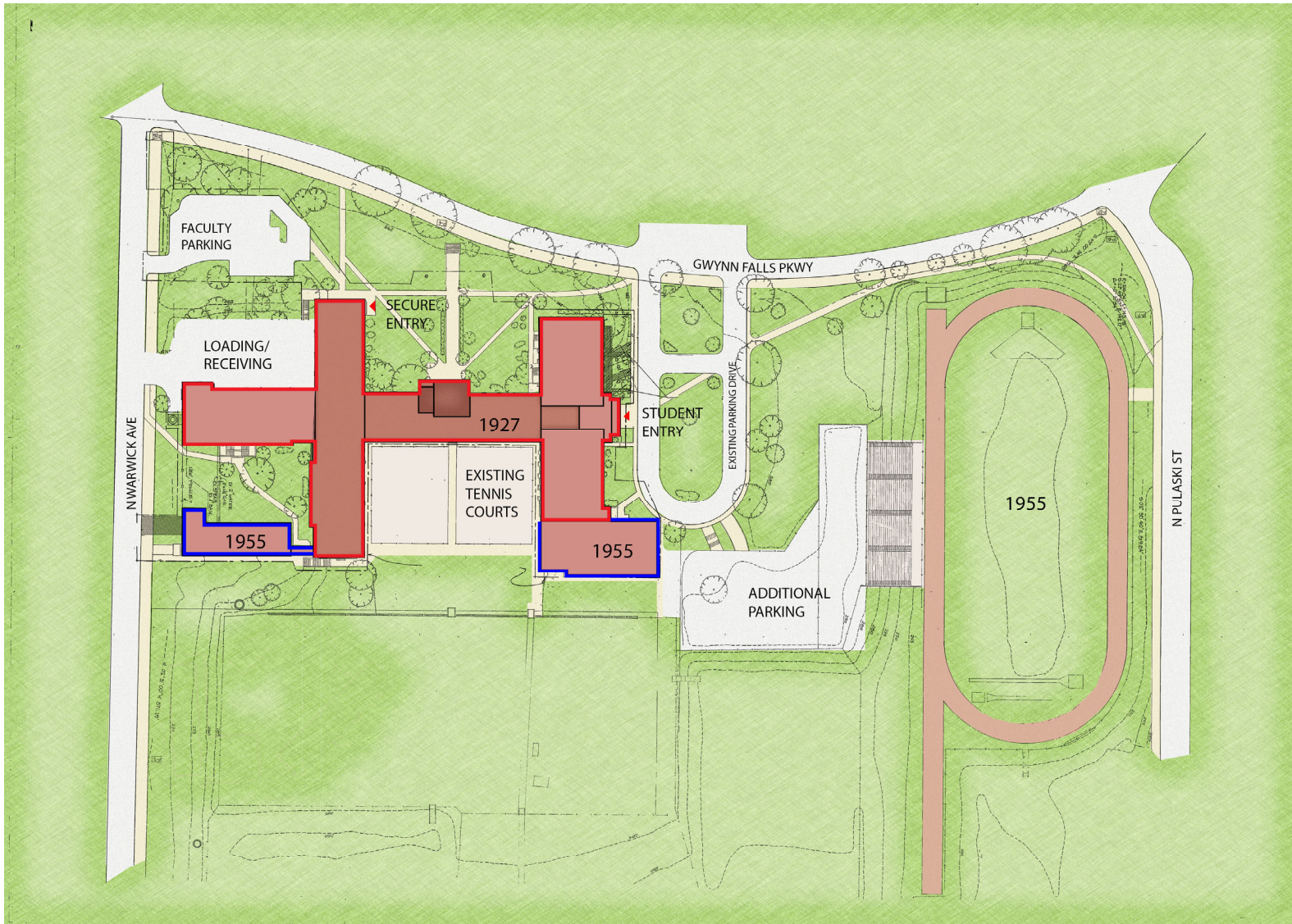
Existing Conditions

Site Photographs



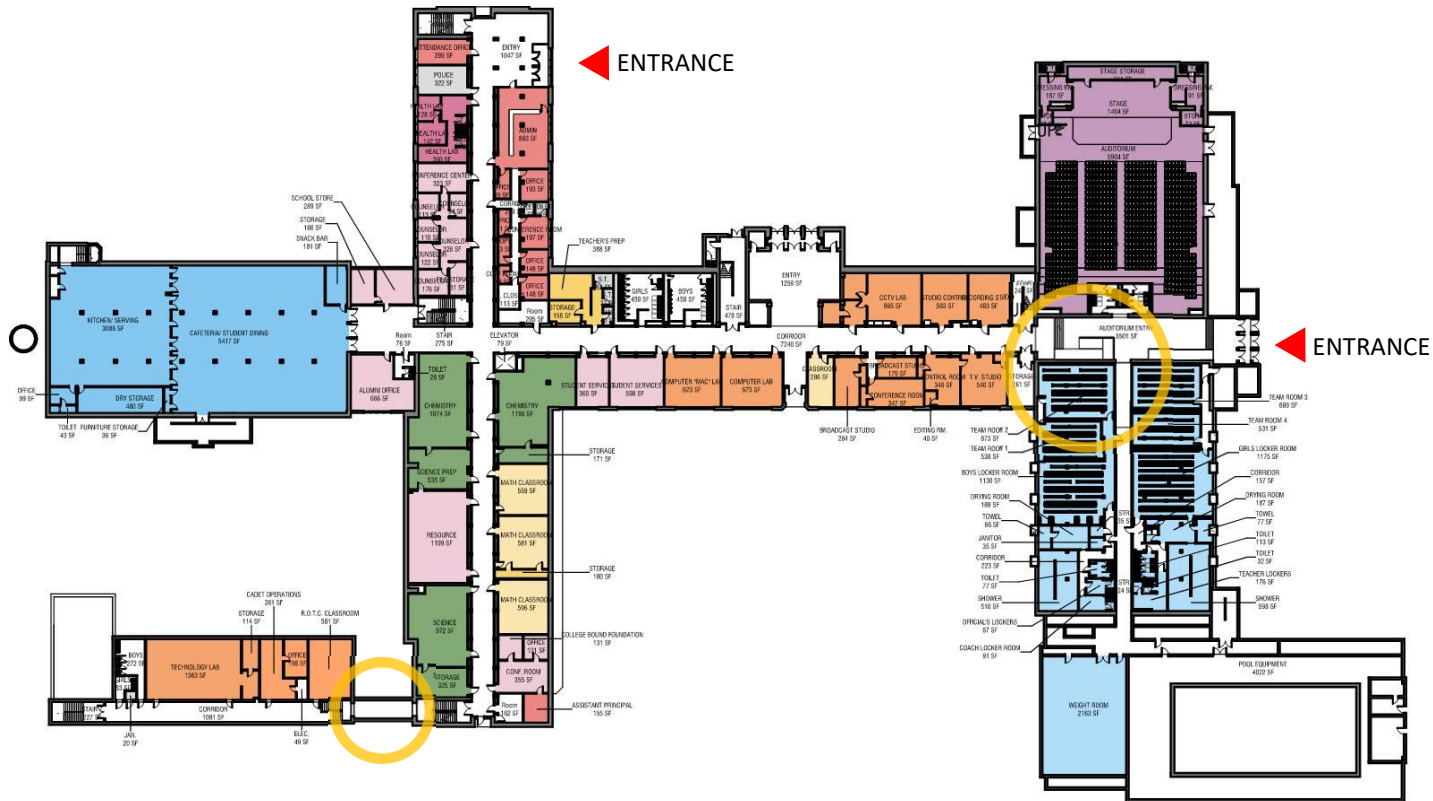
Existing Conditions

Site Plan



Existing Building

Existing Building – Entry Level 1



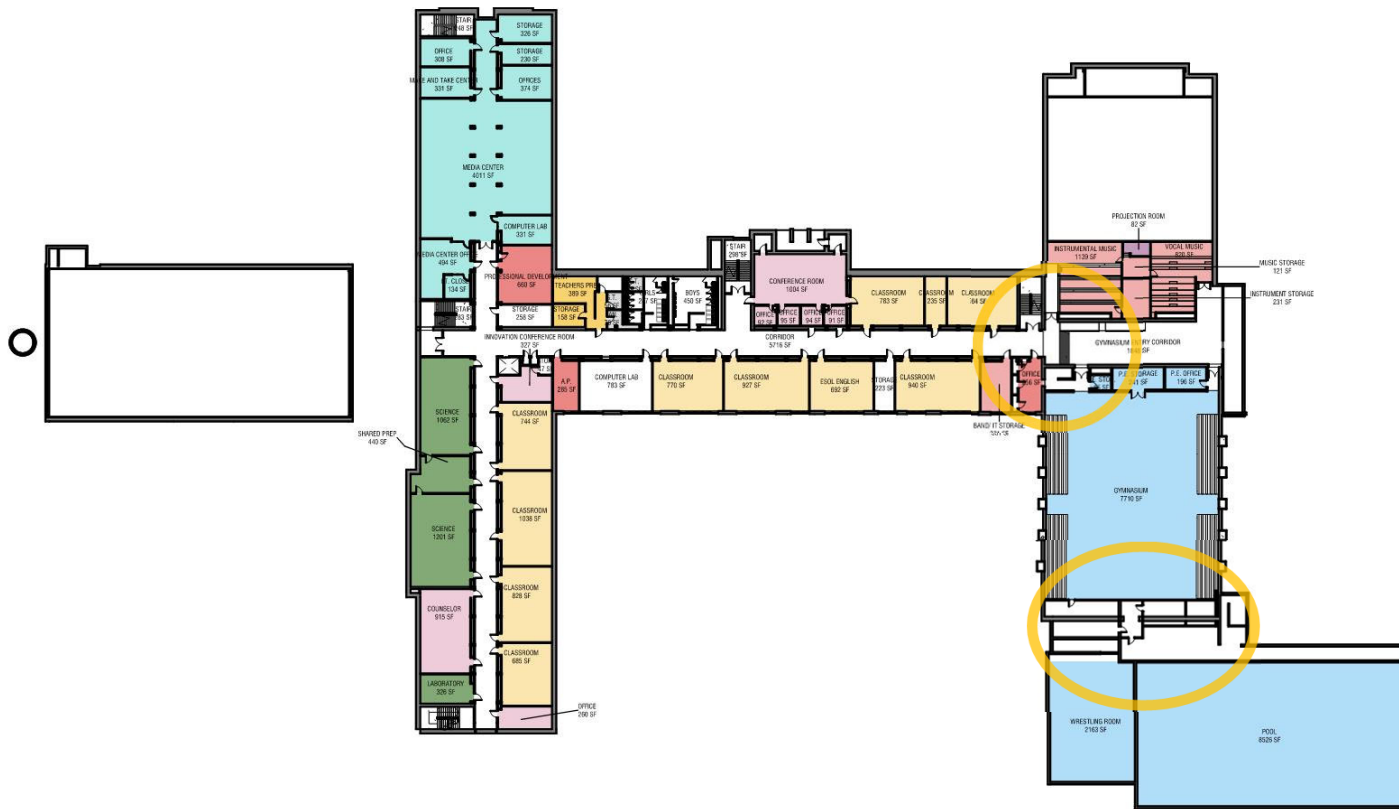
- ADMINISTRATION
- HEALTH SUITE
- GUIDANCE
- TEACHING AND LEARNING
- SUPPORT / COLLABORATIVE
- SPECIAL EDUCATION
- SCIENCES
- VISUAL ARTS
- MUSIC
- FOREIGN LANGUAGES
- TECHNOLOGY EDUCATIONS
- PHYSICAL EDUCATION
- MEDIA
- FOOD SERVICES
- BUILDING SERVICES
- COMMUNITY SPACE

Existing Building

Existing Building – Level 2



- ADMINISTRATION
- HEALTH SUITE
- GUIDANCE
- TEACHING AND LEARNING
- SUPPORT / COLLABORATIVE
- SPECIAL EDUCATION
- SCIENCES
- VISUAL ARTS
- MUSIC
- FOREIGN LANGUAGES
- TECHNOLOGY EDUCATIONS
- PHYSICAL EDUCATION
- MEDIA
- FOOD SERVICES
- BUILDING SERVICES
- COMMUNITY SPACE

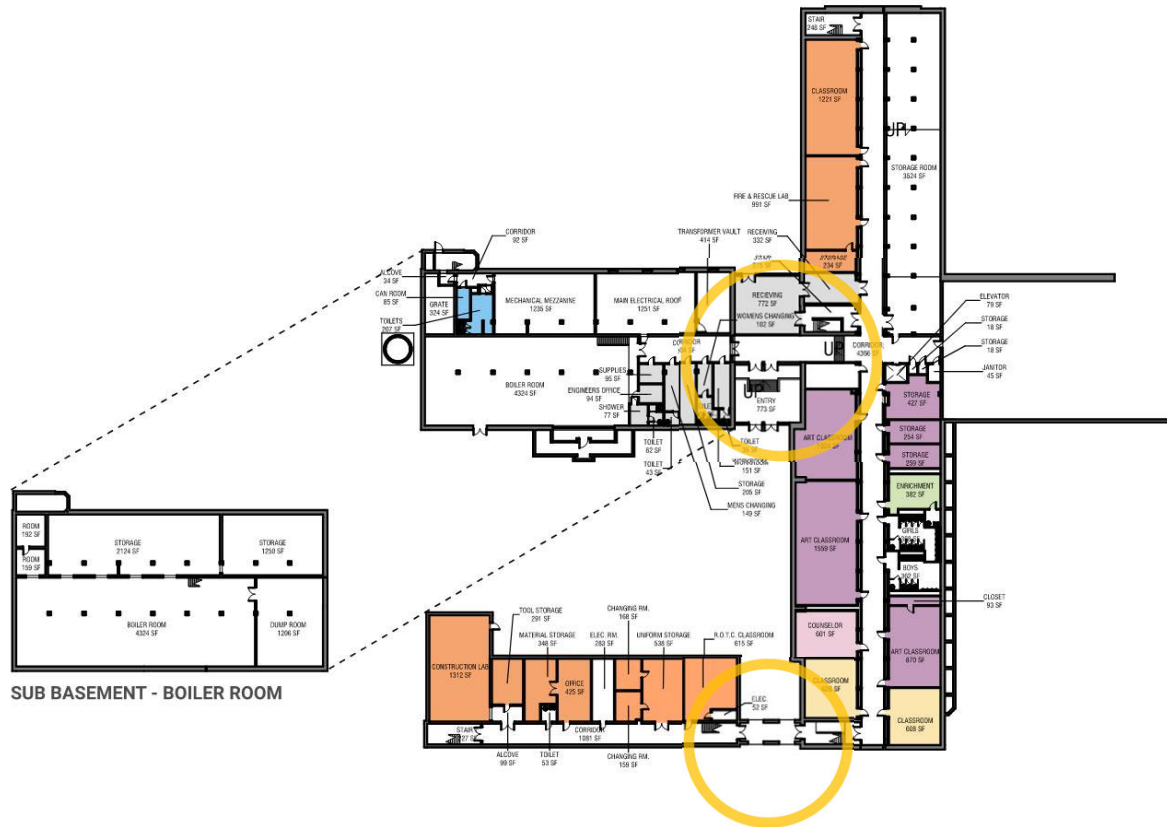


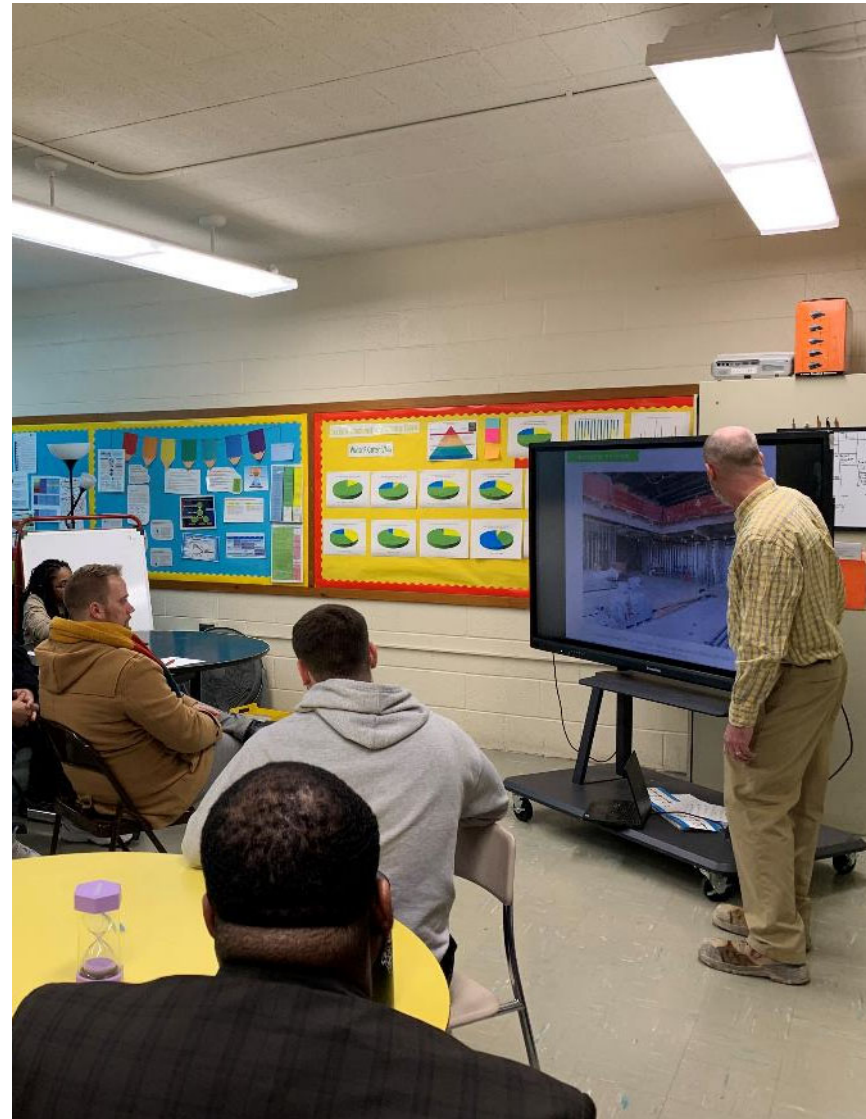
Existing Building

Existing Building – Ground Level



- ADMINISTRATION
- HEALTH SUITE
- GUIDANCE
- TEACHING AND LEARNING
- SUPPORT / COLLABORATIVE
- SPECIAL EDUCATION
- SCIENCES
- VISUAL ARTS
- MUSIC
- FOREIGN LANGUAGES
- TECHNOLOGY EDUCATIONS
- PHYSICAL EDUCATION
- MEDIA
- FOOD SERVICES
- BUILDING SERVICES
- COMMUNITY SPACE







Feasibility Review

- School stakeholders provide feedback on building recommendation
- City Schools staff review stakeholder recommendation and other criteria
- 21st Century staff work with ALL partners to finalize recommendation

What are your biggest hopes?
What are your biggest concerns?



1. Discuss what we heard today
2. Continue to develop the conceptual plans
3. Come back to the community at a later date

Questions?

CONTACTS

Renee Stainrod
rastainrod@bcps.k12.md.us

Ivy McNeil
IDMcNeill01@bcps.k12.md.us

**21st Century School Buildings
Program Office**
(443) 642-4600

www.baltimore21stcenturyschools.org

Social Media



21stCSBaltimore



21stCSBaltimore



21stCenturySchoolBuildingsProgram

Thank You!



This presentation is brought to you by the
21st Century School Buildings Program.

www.baltimore21stcenturyschools.org

21st Century School Buildings Program

Baltimore City Public Schools
200 East North Avenue Room 407-B
Baltimore MD 21202
(443) 642-4600

Dorothy Hellman

Executive Director, 21st Century Buildings Program
Baltimore City Public Schools

Gary McGuigan

Senior Vice President, Capital Development Division
Maryland Stadium Authority

Tisha Edwards

Executive Director
Mayor's Office of Children and Family Success

Robert Gorrell

Executive Director, Public School Construction Program
State of Maryland

BALTIMORE CITY
PUBLIC SCHOOLS

