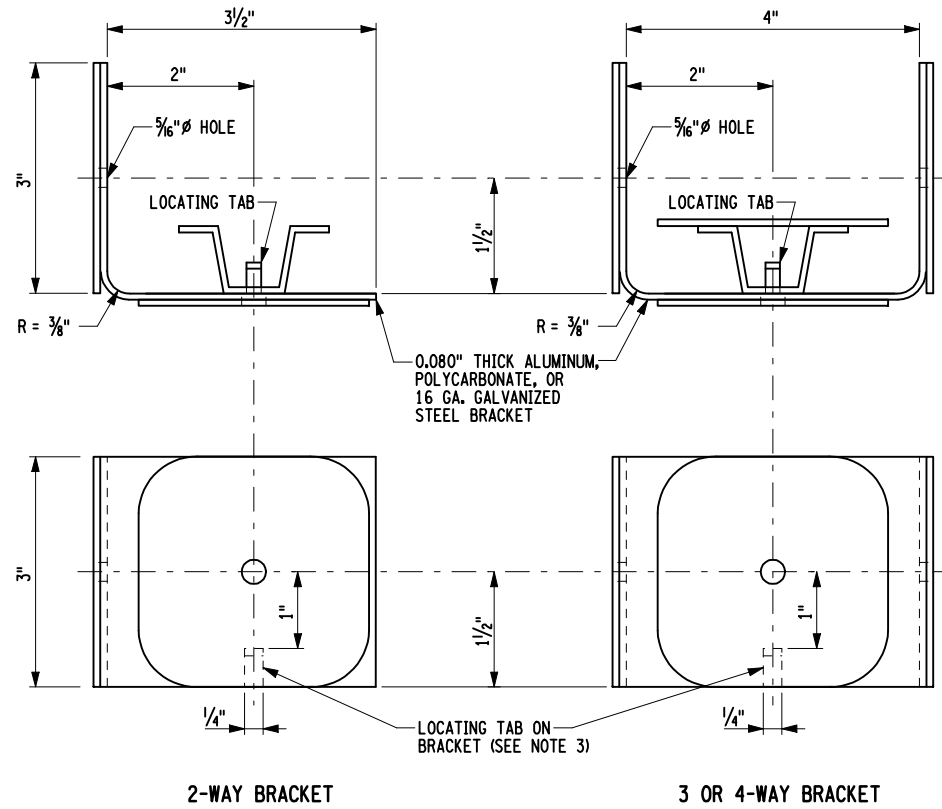
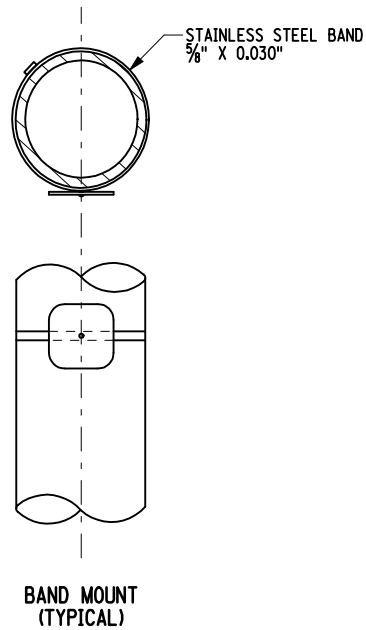


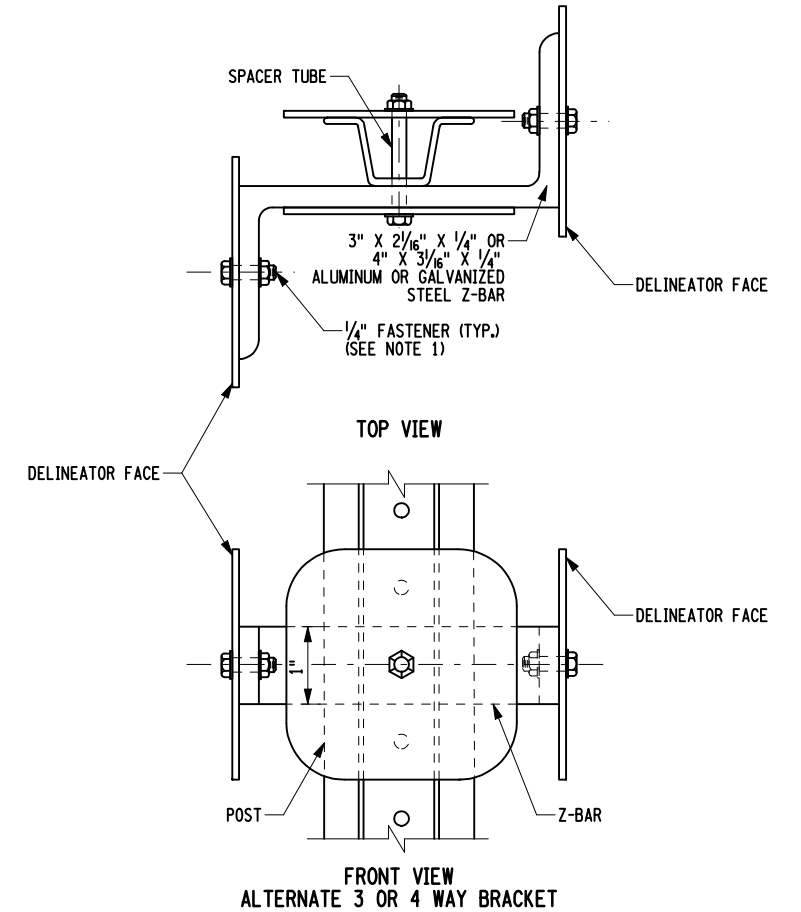
STANDARD DELINEATOR MOUNTING DETAILS



STANDARD DELINEATOR BRACKET DETAILS



BAND MOUNT (TYPICAL)



ALTERNATE 3 OR 4 WAY BRACKET


NOTES:

BRACKETS AND FASTENERS:

1. DELINEATORS, REFERENCE MARKERS AND SNOW PLOWING MARKERS SHALL BE ATTACHED TO POSTS AND BRACKETS USING 1/4" FASTENERS SUCH AS LOCK BOLTS, PULL THROUGH OR DRIVE BLIND RIVETS, OR OTHER FASTENERS AS APPROVED.
2. BRACKETS MAY BE BENT TO OBTAIN OPTIMUM DELINEATOR ORIENTATION. ALTERNATIVE DELINEATOR BRACKET DESIGNS MAY BE USED AS APPROVED BY THE ENGINEER.
3. THE LOCATING TAB IS DESIGNED TO BE BENT BACK 90°, SO THAT IT FITS INTO A POST HOLE TO RESTRICT MOVEMENT OF THE MARKER. AS AN ALTERNATE, A 1/4" Ø, 1/2" LONG WELDED STUD MAY BE USED.
4. ALLOWABLE FASTENER MATERIALS:

- STAINLESS STEEL PER §715-16
- GALVANIZED STEEL PER ASTM A307 GRADE A, A325 TYPE 1,3, OR A449 TYPE 1
- ALUMINUM BOLTS, LOCKBOLTS, NUTS - 2024-T4, 6061-T6
- WASHERS, FLAT - ALCLAD 2024-T4
- WASHERS, SPRINGLOCK - 7075-T6
- BLIND RIVETS - 2017-F, 2117-F, 5056-F
- ALLOYS 2024-T4, 2017-F, 2117-F AND 5056-F SHALL BE ALCLAD OR FINISHED WITH TYPE 205 FINISH IN ACCORDANCE WITH §719-02

FILE NAME = 646-14.dgn
DATE/TIME = 20-JUL-2010 13:25
USER = jturley

 STATE OF NEW YORK DEPARTMENT OF TRANSPORTATION	
U.S. CUSTOMARY STANDARD SHEET	
STANDARD DELINEATOR BRACKET AND FASTENER DETAILS	
APPROVED JULY 20, 2010	ISSUED UNDER EB 10-020
/S/ ROBERT L. SACK, P.E. DEPUTY CHIEF ENGINEER (TECHNICAL SERVICES)	646-14

EFFECTIVE DATE: 01/06/2011