



Winchester Model 9410 Lever Action Shotgun Owner's Manual

Important instructions for

Winchester Model 9410 Lever Action .410 Shotgun

Customer Service Department (United States)

U. S. Repeating Arms Company, Inc.

275 Winchester Avenue

Morgan, Utah 84050-9333

Phone: 1-800-945-5237

Winchester trademarks licensed from Olin Corporation.

If you have any questions or comments regarding your new firearm, please feel free to write or call us. Use the space below to record information about your new Model 9410 shotgun.

Model _____

Gauge _____

Serial Number _____

Purchased From _____

Date of Purchase _____



Contents	Page
Gun safety warnings	5
General description	7
Terminology and descriptions	7
Serial number	8
Ammunition	9
General features	10
Initial cleaning	13
Oiling the action	13
Operation of the hammer and hammer stop	13
Lowering the hammer	15
Trigger stop	16
Assembly/Disassembly	17
Installing a scope	17
General operation	18
Loading procedures	19
Unloading procedures	21
In the case of a misfire	23
Firing procedures	23
Sight adjustments	25
Hammer extension	28
Magazine plug	28
Cleaning and maintenance	32
Ordering parts / service / repair / questions	34
Winchester.com and helpful links	35

THANK YOU

We sincerely hope that you are pleased with your new Winchester 9410 shotgun. We at U.S. Repeating Arms Company thank you for the privilege of providing this shotgun to you. We are especially proud of the many years of enjoyment it is certain to provide for you and your family. The 9410 is another shotgun in an over 130 year-old tradition of producing quality firearms for the World's sportsmen. Quality of manufacture, design, craftsmanship and function are of utmost concern to us. We believe you'll find that your new 9410 meets the Winchester tradition of quality in every way. If you have any questions or comments regarding your new firearm, please feel free write to us at our administrative offices:

Customer Service Department
U. S. Repeating Arms Company, Inc.
275 Winchester Avenue
Morgan, Utah 84050-9333
Phone: 1-800-945-5237



GUN SAFETY WARNINGS

IT IS ESSENTIAL THAT THESE OPERATING INSTRUCTIONS BE THOROUGHLY STUDIED BEFORE USING THIS FIREARM TO ASSURE PROPER AND SAFE GUN HANDLING. FAILURE TO FOLLOW THESE INSTRUCTIONS OR FAILURE TO OBEY ANY SAFETY WARNING MAY RESULT IN INJURY TO YOURSELF OR OTHERS, OR CAUSE DAMAGE TO YOUR GUN.

As a gun owner, you accept a set of demanding responsibilities. How seriously you take these responsibilities can be the difference between life and death. There is no excuse for careless or abusive handling of any firearm. At all times handle your shotgun and any other firearm with intense respect for its power and potential danger.

PLEASE READ AND UNDERSTAND ALL OF THE CAUTIONS, PROPER HANDLING PROCEDURES AND INSTRUCTIONS OUTLINED IN THIS BOOKLET BEFORE USING YOUR NEW FIREARM.

1. Do not carry a loaded gun while walking, running, climbing a tree, crossing a fence or anywhere you might slip or fall, drop the gun or otherwise bump or jar the gun. A gun that is dropped, bumped, or jarred with a chambered round might accidentally discharge even with the safety on, causing serious injury to you or someone else. When a

round is chambered keep the safety on until you are ready to shoot.

2. Do not rely on the safety to prevent accidental discharge. Many safeties merely block the trigger and prevent firing by pulling the trigger. The safety may not prevent an accidental discharge due to dropping, jarring, or bumping a gun.

3. Use only ammunition for which the gun is chambered as indicated on the barrel, to prevent excessive pressure and possible serious personal injury.

4. Incorrectly reloaded ammunition can cause serious personal injury and damage to the firearm due to excessive pressure. Reload only after proper instruction and in strict compliance with instruction and data contained in current reloading manuals.

5. Never point a gun at anything you do not intend to shoot. Always keep it pointed in a safe direction in case of accidental discharge.

6. Always check to ensure that the barrel is free of obstructions before loading and using the gun. If you experience light recoil or off sound, check the barrel for obstruction.

7. Before firing, clean any grease or oil out of barrel with cleaning rod and patch. Grease or heavy accumulation of oil can cause excessive pressure and result in serious personal injury.

8. Keep barrel, chamber and action free of rust. Rust in the barrel and chamber can cause excessive pressures resulting in serious injury. A rusted, pitted or eroded barrel should be replaced.

9. Use hearing protection to prevent ear damage from repeated exposure to gunfire.

10. Always use proper shooting glasses to prevent eye injury from flying particles.

11. Never carry a loaded gun in a motor vehicle or carry one into a dwelling. Always carefully unload the gun before entering a motor vehicle, a dwelling or an area such as a camp. Always point a gun in a safe direction while loading or unloading to prevent serious injury in case of an accidental discharge. Never load in the house or in your vehicle.

12. Never shoot at a hard, flat surface or at the surface of water to avoid a ricochet and possible serious personal injury to yourself or a bystander.

13. Store guns in a clean dry place out of reach of children and separated from stored ammunition.

14. Never alter any parts of your gun. Any alterations or adjustments that may become necessary to the operating mechanism should be performed by a qualified gunsmith.

15. Hunting from elevated surfaces such as tree stands is dangerous. Doing so may increase the risk of handling any firearm. Always make certain that the stand being used is safe, sturdy and stable. Always make certain your firearm is unloaded when it is being taken up and down from the stand. Always make certain that your firearm is not dropped from the stand or dropped while it is being taken up or down from the stand.

16. Discharging firearms in poorly ventilated areas, cleaning firearms, or handling ammunition may result in exposure to lead and other substances known to cause birth defects, reproductive harm and other serious physical injury. Have adequate ventilation at all times. Wash hands thoroughly after exposure.

GENERAL DESCRIPTION

Congratulations on your purchase of a Winchester Model 9410 shotgun — certainly one of the most unique and fun-to-shoot guns ever. The original Winchester Model 94 design is famous for fast handling and natural pointability. No wonder it lends itself so well to a chambering in .410 bore with a smoothbore, unrifled barrel. Whether you are after squirrels, rabbits, upland birds, rodents or even bigger varmints or game (using slugs) the Model 9410 will prove to be as effective as it is enjoyable. The Model 9410 can also be an inventive way to boost the fun of clay target shooting.

This manual covers all current versions of the Model 9410 (the first Winchester Model 94 chambered for .410 shotgun shells). You get all the great features that have made the Model 94 design famous for over a century. Plus other advantages like:

- Advanced rebounding hammer, hammer block and cross bolt hammer stop.
- Positive angle ejection (ejection out the side, to the right, for better ejection when using a scope).
- A special extractor/ejector design offers positive, controlled ejection with shotshells.

As you examine your new Model 9410 you will observe that it possesses the genius of the original Model 94 design

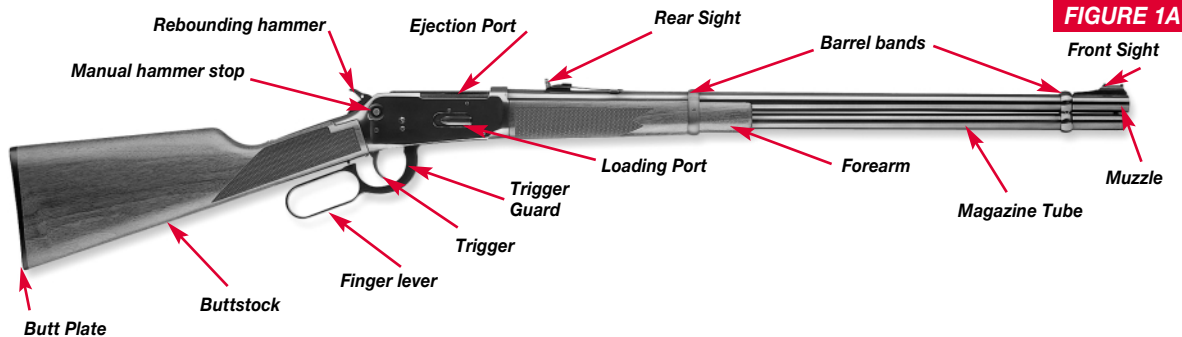
— the most famous of all lever action rifles. No gun better represents the Winchester legacy than the Model 94 rifle. Just like the original Model 94 rifles of the past, you'll appreciate the beautiful craftsmanship and superb function of the your Model 9410.

With a few minor exceptions, the action is identical to the way the original rifles were made in 1894. Yet you'll find that today's manufacturing equipment and technology make it possible to produce this variation with more precision, closer metal-to-wood fits and tighter overall tolerances than possible in earlier times. We're sure that the greatest Winchester gunmakers of the past would be very proud of today's Model 9410 shotgun.

Your new Model 9410 features our highly functional manual hammer stop built into the receiver, as well as our rebounding hammer system. This shotgun also contains an automatic hammer stop which blocks the hammer from striking the firing pin until the trigger is pulled. These advanced features move this traditional design to a new level of convenience and safety. All features are explained in detail later in this manual.

TERMINOLOGY AND DESCRIPTIONS

Descriptions in this manual generally refer to the gun in the horizontal position. That is, in the normal firing position. For example, the muzzle is forward or front; the



buttstock is rearward or rear; the trigger is downward or underneath; the sight is upward or on top. For general parts terminology, refer to Figure 1-A.

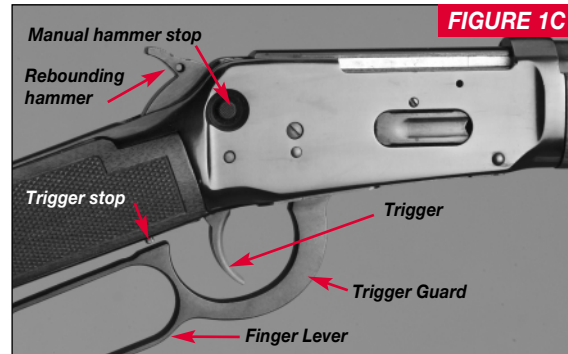
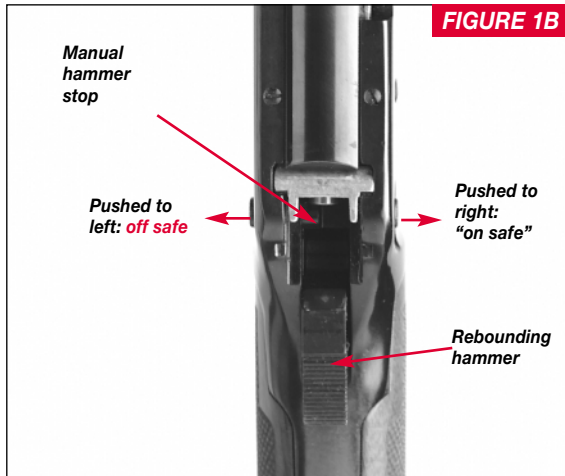
The Winchester Model 9410 is also shown in some detail, focussing on the hammer and lever mechanisms (Figure 1-B through 1-C). You must be familiar with these part names in order to follow instructions contained in this book. Figure 1-D covers the general features and benefits of the Model 9410 design. (Model 9410 Traditional shown above, other models will differ slightly.)

Throughout this manual the “action” refers to the mechanism of this shotgun which loads and secures the shell in the chamber.

IMPORTANT: REFER TO FIGURE 1-A FOR GENERAL PART DESCRIPTIONS REGARDING YOUR NEW SHOTGUN. YOU MUST BECOME FAMILIAR WITH ALL PART NAMES LISTED BEFORE PROCEEDING WITH THE REST OF THE INSTRUCTIONS IN THIS MANUAL.

SERIAL NUMBER

The serial number is located on the bottom of the receiver, at the front, close to where it contacts the rear of the forearm. Record the serial number in this booklet for future reference.



restrictions regarding your new Model 9410 shotgun.

- Factory .410 bore shotgun shells only.
- Chambered for 2½" shells only.
- Never attempt to load 3" shells.
- Barrel has a smooth bore with no rifling.
- Shoots full choke patterns with bird shot.
- Designed to shoot all factory
 - 2½" field and target loads.
 - 2½" Foster-type (rifled) slugs.
 - 2½" buckshot loads.

(Continued on page 12)

AMMUNITION

Your Winchester Model 9410 is designed to shoot modern factory shotgun shells only. It is chambered in .410 bore with a 2½" chamber length.

The gauge of your new Model 9410 is inscribed on the gauge on the barrel near the receiver. Use only ammunition for which your Model 9410 is chambered — as indicated on the barrel — to prevent excessive pressure and possible serious injury. Please observe these important specifications and

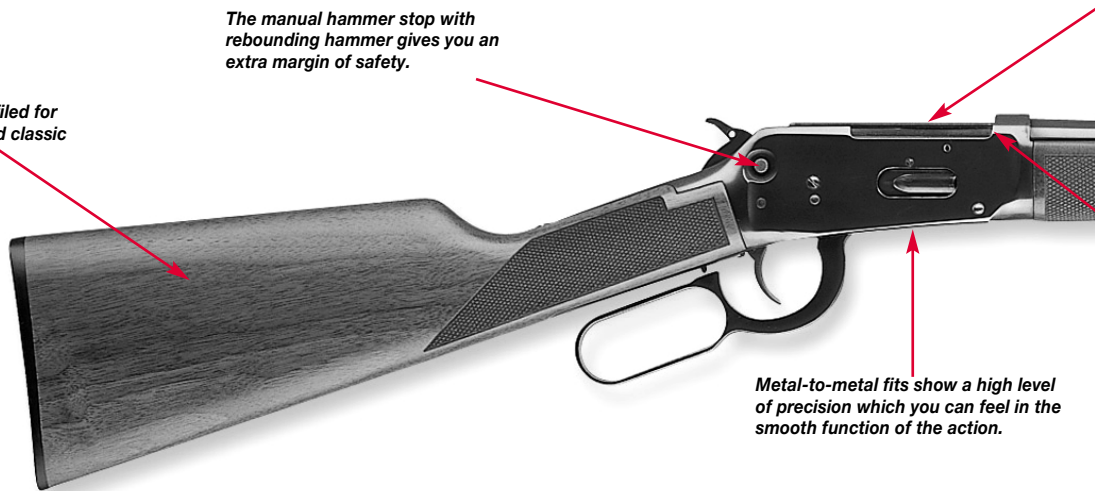
MODEL 9410 FEATURES

Model 9410 Traditional shown, other models differ slightly.

All models are drilled and tapped for scope mounts. With a scope and the proper rifled slug your Model 9410 can be effective for larger varmints — with better results at extended ranges.

The manual hammer stop with rebounding hammer gives you an extra margin of safety.

The stock is profiled for fast handling and classic good looks.



Metal-to-metal fits show a high level of precision which you can feel in the smooth function of the action.

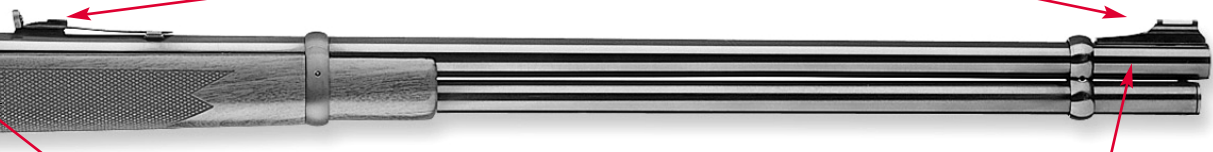
Today's Model 9410 benefits from improvements in the entire line of firearms based on the Model 94 design. You'll see it in its overall fit and finish, the level of precision and the quality of the materials. The 9410 offers all the handling advantages of the original Model 94 design in a shotgun that is ideal for clay target practice, general training and a variety of hunting situations.

FIGURE 1D

The ultra-strong breech block design has stood the test of time and is a main reason for the new Model 9410's slug shooting accuracy.

The handling characteristics of the Model 9410 make it ideal for hunting small game in heavy brush or for use on varmints where there may be very little time to get off a shot at fast moving pests.

Every Model 9410 comes with open sights. Most will feature a traditional drift-windage and elevation adjustable rear sight and ramp style front sight. Some feature fiber optic front sights.



The Model 9410 features a specially designed ejector/extractor system that does not eject the shell until the lever is worked fully forward. This gives more reliable ejection with the numerous factory .410 bore shells on the market. The angle ejection receiver configuration found on the 9410 lets you utilize a scope as well — sending empties to the right, under the scope.

The Model 9410 is chambered in .410 bore. This is a versatile "gauge" that offers the versatility of numerous loadings: birdshot field loads, Foster-type slugs and clay target loads.

The cold-forged chrome molybdenum steel barrel is of the same material employed on our famous Model 94 and Model 70 rifles.

The Model 9410 has a level of responsiveness, fast handling, follow-up shot quickness and total reliability that makes it one of today's most enjoyable small gauge shotguns.

- Magazine capacity: The Model 9410 Traditional will hold Nine (9) shells maximum with most brands/styles of factory loads (may be one less with some brands/styles). Total capacity can be ten (10) if the chamber is loaded first, before loading the magazine.

The Model 9410 Packer will hold Five (5) shells maximum with most brands/styles of factory loads. Total capacity can be six (6) if the chamber is loaded first, before loading the magazine.

Winchester ammunition is always an excellent choice for your new Winchester Model 9410 shotgun, delivering the unmatched performance and dependability you want.

MAKE SURE YOU USE ONLY THE EXACT AMMUNITION/GAUGE AS LISTED ON THE LEFT SIDE OF THE BARREL. IMPORTANT: USE ONLY AMMUNITION SUITABLE FOR USE IN A .410 BORE SHOTGUN WITH A TUBULAR MAGAZINE.

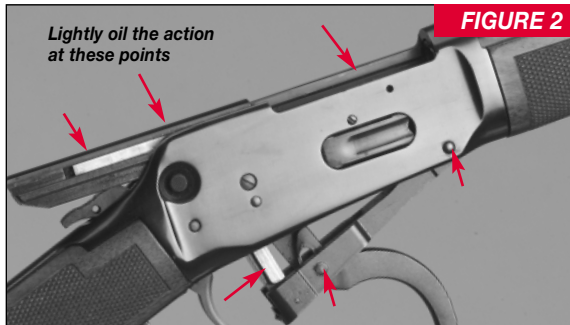
Use only star crimped or roll crimped shells. Because the Model 9410 uses a tubular magazine, never use shells with protruding, pointed or conical point slugs. Never use a shell which has a slug protruding beyond the crimp. Failure to follow these instructions may result in injury to yourself or others, or cause damage to your gun.

NEVER LOAD OR SHOOT ANY CENTERFIRE RIFLE AMMUNITION IN YOUR MODEL 9410

SHOTGUN. SERIOUS INJURY TO YOURSELF AND OTHERS MAY RESULT. U.S. REPEATING ARMS COMPANY, INC., CAN ASSUME NO RESPONSIBILITY FOR INCIDENTS WHICH OCCUR THROUGH THE USE OF SHOTGUN SHELLS OF NONSTANDARD DIMENSION OR THOSE THAT WHEN SHOT, DEVELOP PRESSURES IN EXCESS OF INDUSTRY STANDARDS ESTABLISHED BY THE SPORTING ARMS AND AMMUNITION MANUFACTURERS' INSTITUTE (SAAMI).

DISCHARGING FIREARMS IN POORLY VENTILATED AREAS, CLEANING FIREARMS, OR HANDLING AMMUNITION MAY RESULT IN EXPOSURE TO LEAD AND OTHER SUBSTANCES KNOWN TO CAUSE BIRTH DEFECTS, REPRODUCTIVE HARM AND OTHER SERIOUS PHYSICAL INJURY. HAVE ADEQUATE VENTILATION AT ALL TIMES. WASH HANDS THOROUGHLY AFTER EXPOSURE.

Incorrectly reloaded ammunition can cause serious personal injury and damage to the firearm due to excessive pressure. Reload only after proper instruction and in strict compliance with instructions and data contained in current reloading manuals.



INITIAL CLEANING

Some metal parts of your new Model 9410 have been coated at the factory with a rust preventative compound. Before using your Model 9410, clean the anti-rust compound from the inside of the barrel, receiver, shell feed mechanism and the action/chamber areas. A high quality, light gun oil should be used to remove this compound and to give your new gun its first lubrication. Clean the barrel using a cleaning rod and patch as explained under “Cleaning and Maintenance Suggestions” found later in this manual. First lubrication suggestions are outlined below.

If your new Model 9410 is for collector’s purposes only, it is permissible to leave the rust preventative compound in place and keep your Model 9410 in its box for maximum protection during long term storage.

OILING THE ACTION

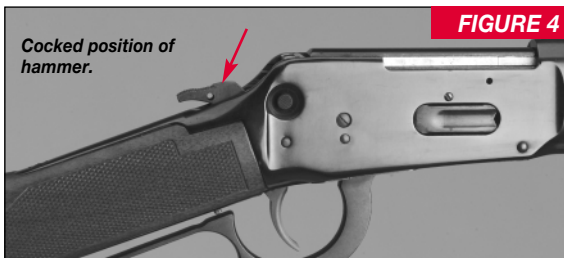
Before the first firing of your Model 9410 you should first wipe the mechanism completely clean, clean the bore and apply a few drops of quality oil on the following surfaces (Figure 2):

- Along the breech bolt surface.
- On each side of the vertical locking lug on the top and bottom.
- Along the breech bolt rail surfaces.

Avoid applying too much oil. Only a light film is necessary. Cleaning and Maintenance Suggestions should be followed before each oiling.

OPERATION OF THE HAMMER

The Model 9410’s Rebounding Hammer is a safety feature designed to protect the firing pin from being struck by the hammer when the trigger is not being pulled. After firing your shotgun the hammer immediately moves to the rebound position. From this position, under normal conditions, the hammer is prevented from moving forward and striking the firing pin. The rebound position and the manual hammer stop are intended to work together to provide protection against unintentional or accidental firing.



HAMMER POSITIONS —

The rebounding hammer on your Model 9410 has two positions as follows:

1. Rebound or “safety” position. This position (Figure 3) takes the place of the dropped and half-cocked positions found on earlier, original Model 94 rifle models. The rebounding feature of the hammer essentially eliminates the dropped position. The hammer only travels to the dropped position momentarily after the trigger has

been pulled with the hammer cocked. The hammer then automatically moves to the rebound position.

THE REBOUND POSITION IS CONSIDERED THE "SAFETY" POSITION. IT IS THE RECOMMENDED POSITION OF THE HAMMER AT ALL TIMES AND SHOULD BE IN THAT POSITION EXCEPT (1) WHEN FIRING IS IMMINENT (2) OR IMMEDIATELY AFTER THE ACTION HAS BEEN CYCLED.

2. Cocked position. This is the position that the hammer is moved to when firing is imminent (Figure 4). It is also the position the hammer moves to when the action is cycled using the finger lever.

WHEN THE HAMMER IS IN THE COCKED POSITION THE HAMMER STOP SHOULD BE IN THE "ON" POSITION UNLESS FIRING IS IMMINENT.

MANUAL HAMMER STOP —

The manual hammer stop is a modern feature built into the action of your Model 9410 to provide an additional level of safety when it is in the "on" position.

“On” Position. When the hammer stop is pushed all the way to the right it is in the on position (Figure 5-A). In this position it blocks the hammer from striking the firing pin.



THIS IS THE RECOMMENDED POSITION OF THE HAMMER FOR ALL TIMES EXCEPT WHEN FIRING IS IMMINENT.

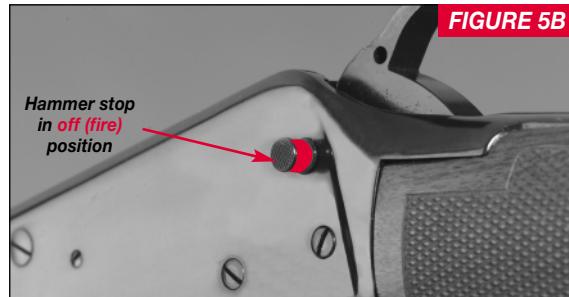
"Off" Position. When the hammer stop is pushed all the way to the left it is in the "off" position (Figure 5-B). This is the position of the hammer stop when firing is imminent.

To place the hammer stop in the "on" position:

1. First, **POINT YOUR SHOTGUN IN A SAFE DIRECTION, THEN PLACE THE MANUAL HAMMER STOP IN THE "ON" POSITION**

by pushing it from left to right with your thumb or finger (the thumb works well for right handed shooters) until the red "warning" ring disappears (Figure 5-A).

2. When the red ring is visible on the left side of the manual hammer stop, it is in the "off" position (Figure 5-B). It is placed in the "off" position by pushing the stop with your

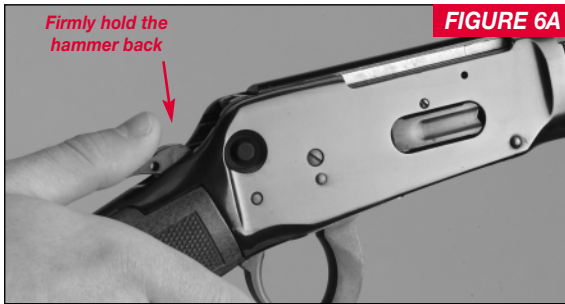


finger fully to the left until the red ring is showing. The manual hammer stop can be actuated with the hammer in the rebound or cocked position.

LOWERING THE HAMMER

At any time the hammer can be cocked either manually or by cycling the finger lever fully. Unless shooting is imminent it is important to move the hammer immediately to the rebound position from the cocked position. To do this:

1. **Make sure the barrel is pointed in a safe direction and that the hammer stop is in the "on" position.**
2. Get a stable grip on your shotgun with your hand in shooting position. With slight upward pressure from your fingers push the finger lever upward against the stock (this releases the trigger stop as explained later). Place your



thumb on the hammer and firmly hold the hammer back slightly with your thumb (Figure 6-A).

3. While holding the hammer back apply just enough pressure on the trigger and finger lever to release the hammer from the full-cock position. Immediately remove your finger from the trigger and slowly and carefully allow the hammer to lower into the rebound position (Figure 6-B).

TRIGGER STOP

It is important that the breech be fully closed before your shotgun is fired. To help assure that this is always the case, your Model 9410 has a trigger stop mechanism. To fire your shotgun it is necessary for the finger lever to depress the trigger stop (Figure 7). The trigger stop is not a safety. It is simply an interlock to assure that the breech is fully closed before a shell can be discharged. Never rely on the trigger stop to prevent accidental discharge.

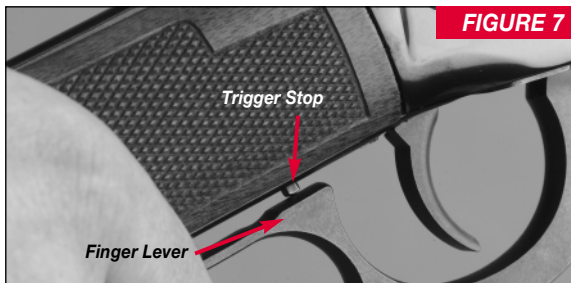


When wearing gloves, a portion of the glove may get between the lever and the lower tang preventing the lever from depressing the trigger stop — making it necessary to squeeze upward on the finger lever.

REMEMBER, NEVER RELY TOTALLY ON YOUR FIREARM'S MECHANICAL "SAFETY" DEVICES.

As is true with other firearms, when the safety mechanism on this shotgun is engaged, it is designed to prevent accidental discharge. However, this mechanism will not necessarily prevent the accidental discharge of this firearm as a result of jarring or abuse such as occurs when a firearm is dropped.

ALWAYS ASSUME THAT YOUR GUN CAN BE FIRED AT ANY TIME, EVEN WITH ALL SAFETY MECHANISMS ENGAGED.



SAFE DIRECTION. FAILURE TO FOLLOW THE ABOVE INSTRUCTIONS COULD RESULT IN INJURY OR DEATH TO YOURSELF OR OTHERS.

ASSEMBLY / DISASSEMBLY

Your Model 9410 comes fully assembled in the box. No assembly to the gun itself is required. No disassembly is required for normal maintenance.

If your Model 9410 requires disassembly for any reason (such as requiring extra cleaning after being dropped in water) it should be performed by a competent gunsmith, by one of our Authorized Repair Centers, or by our service facility.

INSTALLING A SCOPE

Rifled slugs (Foster-type) in .410 bore can offer excellent accuracy when used in your new shotgun. Consequently, in some situations you may want the advantage of a scope or dot type sight. Scope mounts are available separately.

General instructions for installing scope mounts are outlined below. Most systems will be similar to the ones explained here. **Be sure to also follow the instructions provided with your mounts.**

1. Remove the plug screws and de-grease the holes in the top of the receiver.

Whenever you are not actually firing your shotgun always be certain that your gun is pointed in a safe direction. Continually be aware of the position of the manual hammer stop on your shotgun. Check it both manually and visually to avoid any chance of accidental discharge. Always keep the manual hammer stop in the “on” position unless you are actually firing the shotgun. It is a good idea to keep the action open (with the finger lever down) at all times other than when you are in the field and shooting is imminent.

IMPORTANT: IT IS ALWAYS RECOMMENDED THAT THE ACTION BE KEPT OPEN AT ALL TIMES WHEN YOUR SHOTGUN IS LAYING ON ANY BENCH OR TABLE AT A SHOOTING RANGE OR OTHER FACILITY. ALWAYS KEEP THE MUZZLE OF YOUR SHOTGUN POINTED IN A

2. Each mount comes in two pieces. Remove the mount caps (top parts) and fasten the mounts (bottom parts) to the top of the receiver. (You may want to apply a removable locking compound to each screw to assure they stay secure under the effect of recoil). The mount with two holes parallel to the receiver is mounted on the front of the receiver. The mount with holes side by side (perpendicular to the receiver) mounts at the back.

3. Once the mounts are in place, lay the scope inside the stirrups, replace the caps and lightly tighten the cap screws.

4. Before fully tightening the cap screws adjust the scope forward or backward to achieve the proper eye relief (eye relief is the distance your eye must be from the rear lens of the scope to bring the entire field of view into focus).

Proper eye relief is extremely important even with .410 shells. To prevent injury resulting from the rim of a scope hitting your forehead, follow all instructions concerning eye relief provided with your scope.

5. When the proper eye relief is found, tighten the cap screws in a rotating, crossing pattern. Do not over tighten so as to strip the screws or damage the scope tube.

6. Now carefully follow the instructions on sighting in provided with your scope.

Important: If you are using a scope, you may consider using a hammer extension. Refer to the instructions on mounting a hammer extension later in this manual.

GENERAL OPERATION

ALWAYS KEEP THE MUZZLE POINTED IN A SAFE DIRECTION.

Prior to using live ammunition, it is essential that you familiarize yourself thoroughly with these operating instructions. Get accustomed to the feel of your new gun.

- Know the forces required to operate the action
- Know what forces are required to pull the trigger
- **ABOVE ALL, KNOW HOW TO PLACE THE HAMMER INTO THE SAFETY (REBOUND) POSITION AND THE MANUAL HAMMER STOP INTO THE "ON" POSITION.**

Throughout this manual the "action" refers to the mechanism of a firearm which loads and secures the shell in the chamber. If the action resists closing, do not force it. Small pieces of grit or other obstructions can make it difficult to close the action. Make sure all surfaces are clean if any unusual resistance is felt. However, remember that this is a finely fitted action purposely made with tight fitting tolerances. This assures your gun of good part-to-part fit for many years to come and is the sign of a finely crafted firearm.

LOADING PROCEDURES

USE THE CORRECT AMMUNITION AS INDICATED BY THE INSCRIPTION ON THE BARREL. AS EXPLAINED PREVIOUSLY, BEFORE LOADING YOUR SHOTGUN MAKE SURE ALL GREASE AND OIL HAS BEEN REMOVED FROM THE BARREL AND CHAMBER, AND THERE ARE NO OBSTRUCTIONS IN THE BARREL OR ACTION AREAS.

LOADING THE CHAMBER —

The chamber may be loaded two ways:

- (1) Load the chamber by placing a shell directly into the chamber through the opened action (Figure 8), or
- (2) load the chamber by transferring a shell that was previously loaded into the magazine (Figure 9) to the chamber by operating the finger lever.

When loading the chamber directly, the magazine should be empty. You must be careful to insert the end of the shell partially into the chamber before operating the finger lever to close the action. If a shell does not chamber completely when you close the action you should eject it and inspect it. The problem may be caused by the crimp and you can simply try again to chamber it. Be sure to check the shell to make sure it is a 2½" shell and not a 3"



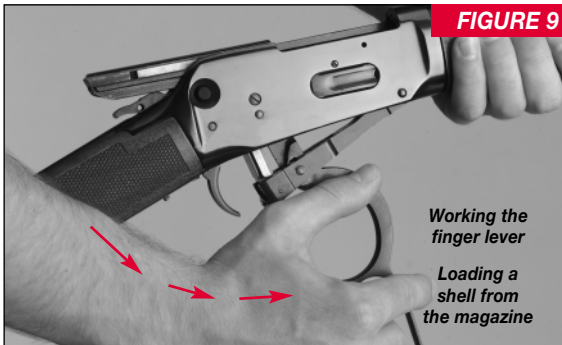
shell. If it is a 3" shell do not use it or try to chamber it in your Model 9410. Store it away separately from your gun.

IN EITHER CASE, ALWAYS FIRST PLACE THE MANUAL HAMMER STOP IN THE "ON" POSITION, AND THEN PLACE THE HAMMER INTO THE SAFETY (REBOUND), POSITION UPON CLOSING THE ACTION.

LOADING THE MAGAZINE —

The magazine is loaded through the port on the right side of the receiver.

1. With the action closed and the manual hammer stop in the "on" position and the hammer in the safety (rebound)

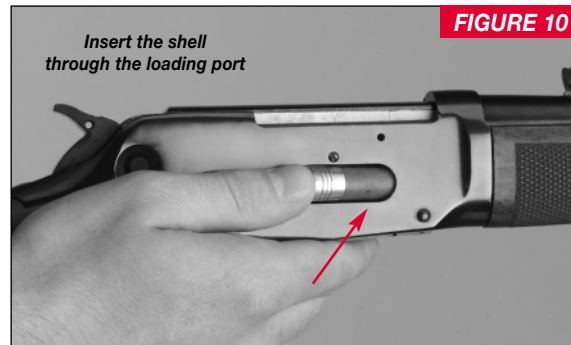


position, press the spring cover inward with the crimp end of the first shell until the entire shell has entered the loading port (Figure 10).

2. Then, insert the next shell in the same manner, pushing down on the cover fully with the shell, then pushing the preceding shell into the magazine.

3. Repeat this procedure with each shell, pushing the last shell past the end of the spring cover, allowing the cover to snap closed (Figure 11). Do not exceed the recommended capacity of the magazine. With practice, the shell can be inserted until only the rim is exposed and the spring cover is depressed to aid in loading the next shell.

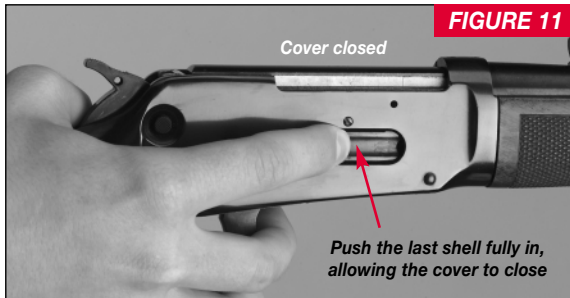
If a shell is loaded manually into the chamber before you begin loading shells into the magazine, you will increase



total shell capacity by one; in the case of the Model 9410 Traditional model, nine in the magazine and one in the chamber. If you open the action to load directly into the chamber with the magazine already loaded it may be difficult or impossible to close the action. You may need to remove the shell from the chamber manually to allow the shell on the carrier to move into position for chambering.

BEFORE LOADING, ALWAYS MAKE SURE TO PLACE THE MANUAL HAMMER STOP IN THE "ON" POSITION, AND THE HAMMER INTO THE SAFETY (REBOUND), POSITION.

CAUTION: ALWAYS MAKE SURE THE SHELLS ARE OF THE PROPER GAUGE AND LENGTH FOR YOUR MODEL 9410 SHOTGUN. CHECK



THE AMMUNITION DESIGNATION ON THE BARREL. FAILURE TO FOLLOW THIS INSTRUCTION CAN RESULT IN SEVERE DAMAGE TO YOUR GUN AND POSSIBLE SERIOUS INJURY TO YOURSELF OR OTHERS.

UNLOADING PROCEDURES

Fully unloading your shotgun for storage or in other appropriate situations is essential to safe gun handling.

BEFORE UNLOADING, CHECK TO ASSURE THAT THE MANUAL HAMMER STOP IS IN THE "ON" POSITION (SAFE) BY PUSHING IT FROM LEFT TO RIGHT. KEEP YOUR FINGER AWAY FROM THE TRIGGER WHEN CYCLING THE ACTION.

1. With the gun pointed in a safe direction and your finger off the trigger, swing the finger lever downward fully. This will extract any shell from the chamber and eject it. Capture (or pick up) the shell and return the finger lever fully upward.

2. Proceed to operate the finger lever in the same manner transferring all the remaining cartridges from the magazine to the chamber and then eject them out.

THROUGHOUT THE UNLOADING PROCESS MAKE SURE THAT THE MANUAL HAMMER STOP STAYS IN THE "ON" POSITION AND THAT YOU KEEP YOUR FINGER AWAY FROM THE TRIGGER AT ALL TIMES.

When shells no longer eject when you cycle the action, further assure that no shells remain by opening the action and visually checking the chamber and feed/magazine mechanism to be sure no shells remain (Figure 12).

IMPORTANT: ALWAYS VISUALLY NOTE, BY LOOKING THROUGH THE TOP OF THE OPEN RECEIVER, THAT THE MAGAZINE FOLLOWER IS SHOWING—AND NOT A SHELL BASE. ALWAYS DOUBLE CHECK THAT NO SHELLS REMAIN.



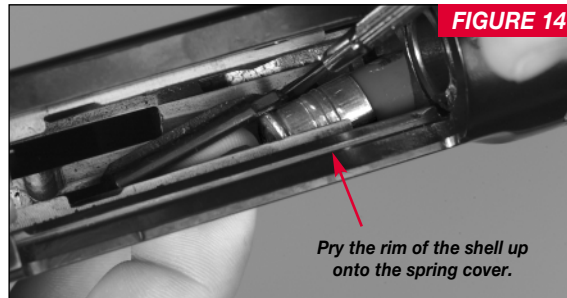
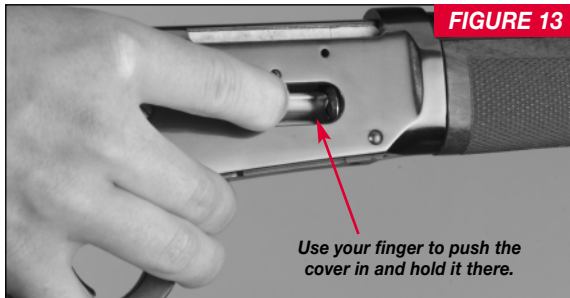
After the last live round is moved out of the magazine and ejected, immediately lower the hammer to the safe (rebound) position as explained previously.

REMOVING A 3" SHELL FROM THE MAGAZINE —

The Model 9410 is designed for 2½" shells only. If you inadvertently load a 3" shell into the magazine it takes a special procedure to clear it. You will probably first notice that you have inadvertently loaded a 3" shell in the magazine when you lower the finger lever to move a new shell to the chamber and the shell does not move up on the carrier. A close inspection will reveal that the crimp end of the shell cannot clear the magazine tube. To remove the shell from the action follow these steps:

1. Close the action, returning the shell back into the magazine tube. You may have to work the lever a bit to move the crimp end of the shell past the cartridge stop if it hangs up slightly. Pushing down on the crimp end of the shell with your finger while closing the action with your other hand may also release it and allow the shell to return back into the magazine tube. Be careful not to pinch your finger.
2. With the action closed use a finger of your free hand to push fully in on the spring cover of the loading port and hold it there (Figure 13).
3. While holding the cover in, open the action by pulling down and continuing forward on the finger lever until the action is open. CONTINUE TO HOLD THE SPRING COVER IN with your finger.
4. Remove your other hand from the finger lever and use your finger or the end of a small screwdriver to push (gently pry) the rim of the shell to the right until it rides up on the spring cover slightly (Figure 14).
5. Use your finger or a small screwdriver to gently encourage the shell rearward, out of the loading port until you can grasp it with your fingers and pull it free.

This is not a procedure you want to do often — so please be very careful not to mix 2½" and 3" shells in your pockets. The Model 9410 is designed solely for 2½" shells.



IN THE CASE OF A MISFIRE

Only rarely will modern factory ammunition experience a misfire. If this ever happens to you when shooting your Model 9410 please follow these instructions carefully.

CAUTION: IN CASE OF MISFIRE, KEEP THE BARREL POINTED IN A SAFE DIRECTION, PLACE THE MANUAL HAMMER STOP IN THE "ON" POSITION AND CAREFULLY OPEN ACTION WHILE AVOIDING DIRECT EXPOSURE TO THE BREECH BY YOURSELF AND OTHERS.

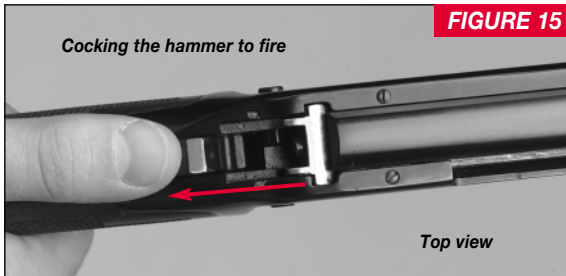
Carefully inspect the ejected shell. If the primer is indented, the shell should be disposed of in a manner that would prevent accidental injury to you or others. If there is no indentation, your gun may have malfunctioned and should be serviced by a qualified gunsmith. If the gun is

under warranty, it must be serviced by a U.S. Repeating Arms Company, Authorized Repair Center (ARC).

IMPORTANT: If your Model 9410 has not fired when the trigger is pulled, also be sure to check your gun's manual hammer stop to make sure it was not left inadvertently in the "on safe" position.

FIRING PROCEDURES

IMPORTANT: WHEN YOU ARE PREPARING TO SHOOT, IT IS ALWAYS ESSENTIAL THAT YOU BE TOTALLY SURE OF YOUR TARGET. ALWAYS BE AWARE OF ALL OBJECTS BEHIND YOUR TARGET. KNOW THE EXACT LOCATION OF PERSONS WITH YOU AND ANY OTHERS IN YOUR VICINITY. PICK YOUR TARGET WISELY AND CAREFULLY.



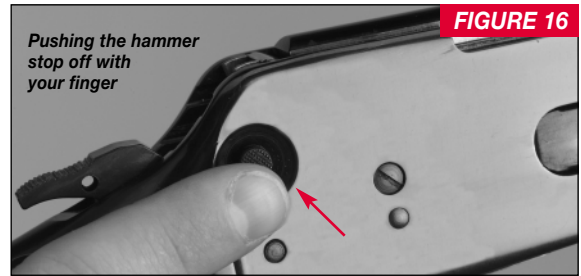
With a loaded shell in the chamber, the manual hammer stop in the “on” position, the hammer in the safety (rebound) position and your finger off the trigger:

1. Firmly position your thumb on the hammer and draw the hammer back to the full-cock position (Figure 15).
2. Place the manual hammer stop in the “off” position (Figure 16) by pushing it from right to left.

YOUR SHOTGUN IS NOW READY TO FIRE.

3. Firmly shoulder your gun, take aim and when on target pull the trigger smoothly, without jerking. After firing, let the trigger return to the fully forward position.

SPECIAL NOTE ON TRIGGER PULL: When pulling the trigger an initial “take-up” section can be felt. This longer, initial pull is an added safety feature of your Model 9410. It serves to drop an internal hammer block that is



positioned between the hammer and receiver. The hammer block prevents the hammer from striking the firing pin until you pull the trigger to fire the shotgun.

TO CHAMBER ANOTHER ROUND FOR THE NEXT SHOT —

1. Swing the finger lever fully down extracting and ejecting the fired shell case from the chamber.
2. Close the action by returning the finger lever upward. The closing of the action will transfer a new shell from the magazine to the chamber, leaving the hammer in a cocked “ready to fire” position.

3. WHEN THROUGH FIRING ALWAYS IMMEDIATELY PLACE THE MANUAL HAMMER STOP IN THE “ON” POSITION (FIGURE 17), AND THE HAMMER IN THE SAFETY (REBOUND) POSITION (REFER BACK TO FIGURE 6).



FIGURE 17

Push the hammer stop from left to right to the "on" (safe) position

Top view

To fire additional shells from the magazine, simply work the finger lever downward fully and return it to the original upward position and repeat the firing sequence again.

WHEN FIRING IS COMPLETED OR WHEN SHOOTING IS NO LONGER IMMINENT, IMMEDIATELY RETURN THE MANUAL HAMMER STOP TO THE "ON" (SAFE) POSITION AND RETURN THE HAMMER TO THE REBOUND POSITION.

IMPORTANT: UNDER NO CIRCUMSTANCES SHOULD YOU MOVE ON OR CONTINUE TO HUNT WITH YOUR HAMMER OR SAFETY IN THE FIRE POSITION.

SIGHT ADJUSTMENTS

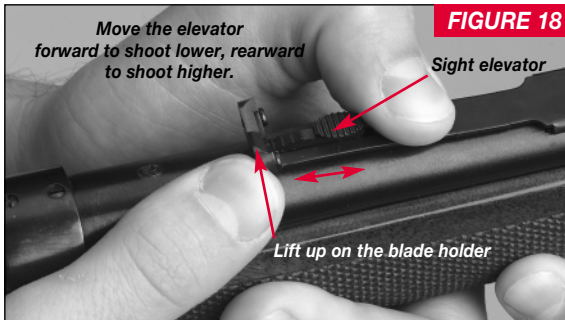
All Model 9410 shotguns are fitted with open sights. The style and adjustment system may vary between models and grades.

The proper procedure is to shoot a group or pattern with the sights set as they come from the factory (intermediate position on both elevation and windage), and then make incremental adjustments to move the sight blade and blade holder to position the group on your target. The procedures below are for the type of open sights found on many current Model 9410 shotguns.

BEFORE MAKING ANY SIGHT ADJUSTMENTS, MAKE SURE YOUR SHOTGUN IS FULLY UNLOADED AND THE MUZZLE IS POINTED IN A SAFE DIRECTION. PLACE THE HAMMER IN THE REBOUND POSITION AND THE MANUAL HAMMER STOP INTO THE "ON" POSITION.

UP OR DOWN ELEVATION ADJUSTMENTS —

Adjusting elevation on your Model 9410 requires you to lift up the rear notch blade holder on your shotgun's rear sight with your fingers and move the notched elevator either forward or backward (see Figure 18). To raise point of impact, use your fingers to lift up on the blade and slide the elevator rearward. Adjusting the sight to make your



gun shoot lower is just the opposite — move the elevator forward. Remember:

- Move the blade and holder UP to shoot HIGHER.
- Move the blade and holder DOWN to shoot LOWER.

RIGHT OR LEFT WINDAGE ADJUSTMENTS —

On most Model 9410 sights, the entire rear sight blade holder is dove-tailed in the rear sight base. To adjust for windage, gently move the rear sight blade to the right or left by tapping at the dove-tail using a wood or fiber dowel or hammer that will not mar the sight (Figure 19). If you tap to the right your gun will shoot more to the right. Moving the blade holder to the left is just as easily done. Note how much you adjust the sight as you sight-in your Model 9410. Remember:



- Move the rear sight to the RIGHT to shoot farther to the RIGHT on the target.
- Move the rear sight to the LEFT to shoot farther to the LEFT on the target.

Care should be taken not to mar the finish, damage the attaching screws or bend sight components when adjustments are made.

All sight adjustments are a matter of trial and error. Remember, it is usually necessary to reset your sights when you change type or even brand of ammunition.

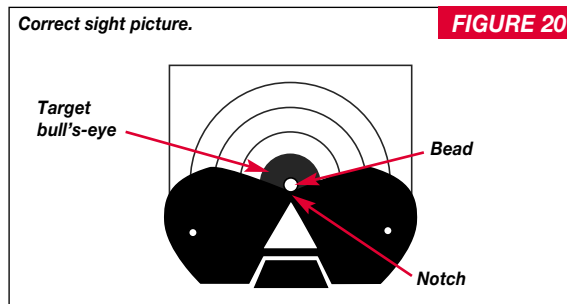
SIGHT MAINTENANCE —

Occasionally check your sights to make sure they have not been jarred or vibrated out of adjustment. This is especially important after extensive shooting or after hunting under rugged conditions. If so equipped, check the two screws holding the rear sight blade in place on the blade mount and carefully tighten if necessary. Check the screw holding the front sight base in place on the barrel. This screw can be accessed by gently removing the fiber optic pipe from the base. Tighten the screw and carefully re-install fiber optic pipe. Front and rear sight bases should always be tight on the barrel and dove-tails should be snug.

SIGHT PICTURE —

The correct sight picture for the sights on your 9410 when shooting Foster-type slugs is with the front bead resting in the bottom of the sight blade (also called the apex of the shallow). The bead itself should rest directly under the point of impact (Figure 20). For example, if you were shooting a conventional target, the round, black bull's-eye would appear to rest on top of the front bead.

When patterning with birdshot, the sights should be aligned with the center of the pattern. Some shooters may wish to position the pattern a few inches higher than the point of aim, depending on preference and shooting situation. The bird shot patterns you will experience with the Model 9410, at 25 yards, would generally be considered “full choke.”



HAMMER EXTENSION

Some Model 9410 rifles are supplied with a hammer extension. A hammer extension is useful when a scope is mounted. It extends to the side, making it convenient to cock and lower the hammer even with a low-mounted scope.

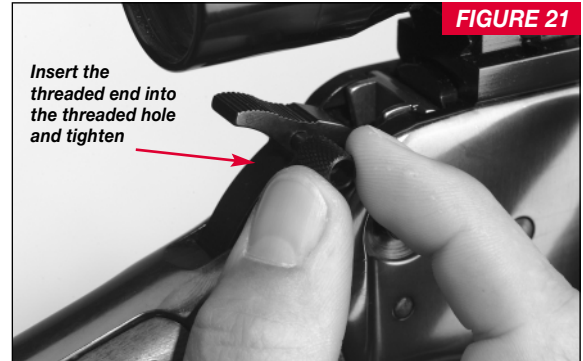
The hammer extension can be used in either the right hand or left hand position. To install, coat the hammer extension threads with Loctite® thread locking compound. Position the round hollow edge to the left or right as preferred and fully tighten the hammer extension in the tapped hole in the hammer (Figure 21). (Right-handed shooters usually prefer mounting the extension to the right side.)

WARNING: HAMMER EXTENSIONS CAN LOOSEN WITH USE. OCCASIONALLY CHECK TO MAKE SURE YOUR HAMMER EXTENSION IS STILL ON TIGHTLY. PROPER MOUNTING OF THE HAMMER EXTENSION IS IMPORTANT TO PREVENT ACCIDENTAL DISCHARGE.

It is important to familiarize yourself thoroughly with the operation and use of the hammer extension and your firearm prior to using live ammunition.

MAGAZINE PLUG

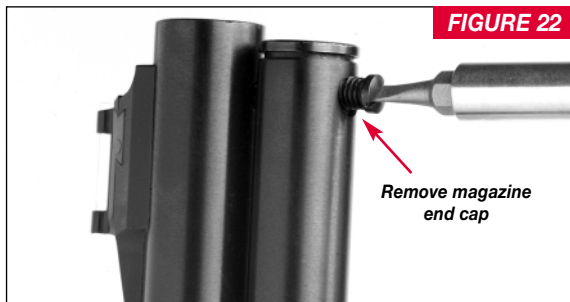
The 9410 is delivered with a three-shot adapter plug



included in the box. This plug limits magazine capacity to two shells in compliance with federal migratory bird (doves are migratory birds) regulations and regulations in some states. If you do not wish to be limited to three shots total — when it is not required by law — you can remove the adapter plug.

WHEN REMOVING THE PLUG, BE CERTAIN THERE ARE NO SHELLS IN THE MAGAZINE OR CHAMBER AND KEEP THE BARREL AND MAGAZINE POINTED IN A SAFE DIRECTION AT ALL TIMES.

Remember, the plug and magazine cap are under spring pressure, so care must be taken for safe removal. Always



point the end of the magazine away from your face and in a safe direction. Never look directly down into the cap end of the open magazine.

ALWAYS WEAR EYE PROTECTION WHEN REMOVING AND INSTALLING THE MAGAZINE'S THREE-SHOT PLUG.

If you misplace or break the adapter included with your Model 9410, contact our parts department (Page 34).

ADAPTER INSTALLATION MODEL 9410 TRADITIONAL—

1. Loosen and remove the magazine end cap retaining screw located on the underside of the forward end of the magazine tube (Figure 22).
2. Carefully remove the magazine end cap from the magazine. Remember, it is under spring load.
3. The spring will rise out of the magazine tube.



4. Place the three shot adapter inside the magazine spring coils with the flared end of the adapter resting on the top coil. (Figure 23).

5. Replace the magazine end cap, pushing the spring and adapter back down into the magazine tube.
6. Replace the magazine cap retaining screw.

ADAPTER REMOVAL, MODEL 9410 TRADITIONAL—

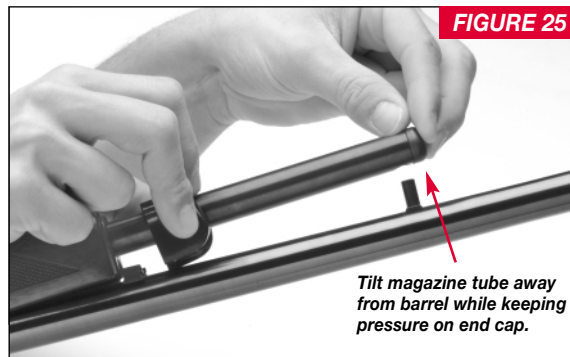
1. Loosen and remove the magazine end cap retaining screw located on the underside of the forward end of the magazine tube (Figure 22).
2. Carefully remove the magazine end cap from the magazine. Remember, it is under spring load.
3. As the spring rises out of the magazine tube, it will lift the three-shot adapter with it.



4. Remove the three-shot adapter from the spring (Figure 23).
5. Replace the magazine end cap, pushing the spring back down into the magazine tube.
6. Replace the magazine cap retaining screw.

ADAPTER INSTALLATION MODEL 9410 PACKER —

1. Remove the two screws on the front of forearm cap using a standard screwdriver.
2. Pass a small screwdriver through the hole in the sling post found on the end of the magazine tube. Turn the post counter clockwise to loosen the post. (Figure 24.)
3. Slide forearm cap forward on magazine tube. Carefully



- remove the magazine end cap from the magazine by tilting the magazine tube away from the barrel enough to clear the sling post mounting stud on the barrel. **Remember, magazine is under spring load.** (Figure 25.)
4. The spring will rise out of the magazine tube. Place the three shot adapter inside the magazine spring coils with the flared end of the adapter resting on the top coil. (Figure 23.)
 5. Replace magazine end cap, pushing the spring and adapter back down into the magazine tube. **BE SURE To install the end cap with the flat spot around the sling post mounting stud hole facing away from the barrel.** (Figure 26.)

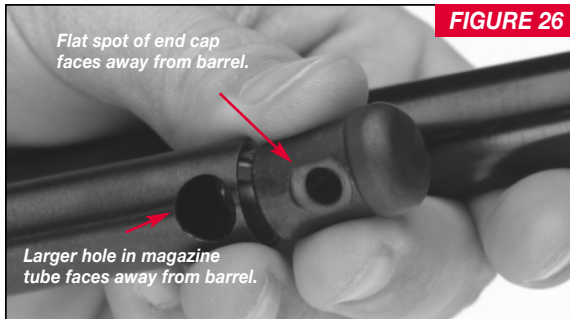


FIGURE 26

ADAPTER REMOVAL, MODEL 9410 PACKER —

1. Remove the two screws on the front of forearm cap using a standard screwdriver.
2. Pass a small screwdriver through the hole in the sling post found on the end of the magazine tube. Turn the post counter clockwise to loosen the post. (Figure 24.)
3. Slide forearm cap forward on magazine tube. Carefully remove the magazine end cap from the magazine by tilting the magazine tube away from the barrel enough to clear the sling post mounting stud on the barrel.

Remember, magazine cap is under spring load. (Figure 25.)

4. As the spring rises out of the magazine tube, it will lift the three-shot adapter with it. Remove the three-shot adapter from the spring (Figure 23).

5. Replace magazine end cap, pushing the spring back down into the magazine tube. **Be sure to install the end cap with the flat spot around the sling post mounting stud hole facing away from the barrel. (Figure 26.)**

7. Before tilting the magazine back in place on the sling post mounting stud, note the two different sized holes in the end of the magazine tube. **The larger hole must face away from the barrel. (Figure 26.)**

8. Replace magazine tube onto sling post mounting stud.

7. Before tilting the magazine back in place on the sling post mounting stud, note the two different sized holes in the end of the magazine tube. **The larger hole must face away from the barrel. (Figure 26.)**

8. Replace magazine tube onto sling post mounting stud.

9. Replace sling post through magazine tube and end cap. **Carefully install sling post making sure the largest part of sling post is properly installed and passes through the hole in the magazine tube. Failure to do so will cause damage to the magazine tube.**

10. Return forearm cap to original location and secure forearm cap with screws.

9. Replace sling post through magazine tube and end cap. Carefully install sling post making sure the largest part of the sling post is properly installed and passes through hole in magazine tube. Failure to do so will cause damage to magazine tube.

10. Return forearm cap to original location and secure forearm cap with screws.

CLEANING AND MAINTENANCE SUGGESTIONS

The Model 9410 will function better and more reliably over a longer period of time if it is properly maintained and kept clean.

BEFORE PERFORMING ANY CLEANING PROCEDURES, ALWAYS MAKE CERTAIN THERE ARE NO SHELLS IN THE CHAMBER, MAGAZINE OR ACTION/FEED AREAS.

You should clean your Model 9410 after every day of shooting and more often if it becomes excessively dirty. A minimum cleaning includes wiping down the action and oiling key parts. Regular maintenance will also include cleaning the barrel. If you encounter a function problem (tight action when working the finger lever), be sure to give your gun a thorough cleaning to see if it solves the problem before seeking the services of one of our Authorized Repair Centers, our service facility or a competent gunsmith.

To clean your firearm, follow the general outline that follows:

CLEANING PROCEDURES —

BE CERTAIN YOUR GUN'S CHAMBER AND MAGAZINE ARE UNLOADED. ALWAYS WEAR PROTECTIVE SAFETY GLASSES DURING ALL CLEANING PROCEDURES. KEEP AMMUNITION AWAY FROM THE CLEANING AREA. DO NOT TEST THE FUNCTION OF YOUR FIREARM WITH LIVE AMMUNITION. ALWAYS PLACE THE MANUAL HAMMER STOP IN THE "ON" (SAFE) POSITION BEFORE BEGINNING ANY CLEANING PROCEDURE.

1. Use a cleaning rod with a tip and patch suitable for the bore diameter of your gun. Make sure the patch is large enough for a snug fit in the bore.

Insert the rod and patch into the barrel at the muzzle end and run it back and forth several times. Use a crown protector if possible. Be careful not to strike the crown of the muzzle with the handle end of the rod. Damage to this area can affect the accuracy of your gun.

2. Inspect the chamber and bore for brass, copper and powder fouling. A normal amount of powder residue can be expected and is not serious. It can usually be removed by repeating step one, using a patch saturated with solvent.

If or when fouling should become heavy, it can be removed with a brass bore brush. Dip or spray the brush with solvent and scrub the chamber and bore until the fouling is removed. To prevent brass bristles from breaking off, the brush should be pushed completely through the bore before being withdrawn. If cast lead slugs are used a lead solvent may be used as well to fully clean the bore. Follow the instructions on all solvents and cleaners.

3. After fouling has been removed the bore should be wiped dry. Then pass a slightly oiled patch through the bore, for preservation. A fine, light gun oil is recommended.

4. Wipe all exposed metal surfaces of the receiver, forearm and barrel with a clean rag. Finger marks should be removed because they provide a place where moisture can accumulate. Any dried oil in the receiver area should also be removed.

5. Then lightly oil your gun at the points described under “Oiling the Action” (page 13). The metal of the gun should receive a light film of oil any time the shotgun has been exposed to weather or handling. Remember, the polished, finely fitted surfaces of the receiver and action mechanisms must always have a thin film of oil. Make sure that the surfaces of the breech block, lever components and feed mechanism parts are especially clean and lightly oiled with a high quality gun oil. Do not use pure silicone or lanolin.

6. INSPECT THE BARREL AND CHAMBER. TO MAKE CERTAIN THAT NO PATCHES HAVE BEEN INADVERTENTLY LEFT IN THEM.

Remove any that remain.

7. Wipe all wood surfaces.

8. When transporting only, store your gun in a quality protective case to prevent scratches and dents. Store in a dry place to prevent corrosion. Store away from children.

MAKE SURE YOUR GUN IS UNLOADED AND ALWAYS STORE AMMUNITION SEPARATELY.

OTHER CLEANING SUGGESTIONS —

- Never pour large quantities of oil into the receiver or other parts. It can drain down to the wood and soften it — and cause permanent damage and loosening of the stock.
- After extended periods of heavy use, your gun should be taken to one of our Authorized Repair Centers or a qualified gunsmith to have the action disassembled for professional cleaning and lubrication.

NEVER ATTEMPT TO TAKE YOUR MODEL 9410 APART FURTHER THAN EXPLAINED IN THIS MANUAL.

This is a specialized, finely fitted mechanism. You may permanently mar it by attempting to disassemble the inner mechanism assemblies. If further disassembly for service or cleaning is required, take your gun to a U. S. Repeating Arms Company Authorized Repair Center or a competent gunsmith as explained under "Service or Repair."

PARTS, SERVICE, REPAIR AND QUESTIONS

If your Winchester rifle or shotgun should ever need service or repair; it is often best to utilize one of our Authorized Service Centers. In some cases it is appropriate to use the Winchester Service Center in Arnold, Missouri. A list of Authorized Service Centers was included with your new firearm. If you need a new listing call us. We can help you determine the best place to service your firearm.

In order to avoid delays it is important to never send your gun directly to our facility without direct authorization from one of our service specialists. This avoids possible delays in obtaining service. Call us for details on how to receive service first, before sending your gun.

Parts listings, Service Center lists, service procedures and general product information are also found on the web at: www.Winchester-guns.com

GENERAL PRODUCT AND HISTORICAL QUESTIONS

1-800-945-5237

Winchester Rifles and Shotguns Customer Service
275 Winchester Ave.

Morgan, Utah 94050-9333

PARTS, SERVICE, REPAIR STATUS AND TECHNICAL QUESTIONS

1-800-322-4626

Winchester Rifles and Shotguns Parts & Service
3005 Arnold Tenbrook Road

Arnold, MO 83010-9406

***CAUTION: PARTS ARE MADE FOR
CURRENT WINCHESTER BRAND GUNS
AND SHOULD NOT BE USED IN OTHER
GUNS EVEN THOUGH MODELS MAY BE
SIMILAR. IMPROPERLY FITTED PARTS
MAY BE DANGEROUS.***

WINCHESTER-GUNS.COM

NOTES

U.S. Repeating Arms Company offers an information resource for you on the world wide web.

- List of authorized repair centers.
- Customer service information.
- Answers to many technical and historical questions.
- Links to helpful sites.
- On-line catalog

www.winchester-guns.com

You Are Responsible For Firearms Safety.

As a gun owner, you accept a set of demanding responsibilities. How seriously you take these responsibilities can mean the difference between life and death. Failure to follow any of these instructions can cause extensive damage to your gun and/or possible serious injury or death to yourself and others. There is no excuse for careless or abusive handling of any firearm. At all times handle any firearm with intense respect for its power and potential danger. **READ AND UNDERSTAND all of THE CAUTIONS AND PROPER HANDLING PROCEDURES OUTLINED IN THIS BOOKLET BEFORE USING YOUR NEW FIREARM.**

1. ***ALWAYS KEEP THE MUZZLE OF ANY FIREARM POINTED IN A SAFE DIRECTION.***

Do this even though you are certain the firearm is unloaded. Never point any firearm at anything you do not intend to shoot. Be extremely alert and aware of all persons and property within the range of your ammunition.

2. ***NEVER RELY TOTALLY ON YOUR SHOTGUN'S MECHANICAL "SAFETY" DEVICE.***

Always assume that your gun can be fired at any time, even with all the safety mechanism engaged. The word "safety" describes a gun's trigger block mechanism, sear block mechanism, hammer block mechanism or firing pin block mechanism. These mechanical devices are designed to place your gun in a **SAFER** status. No guarantee can be made that the gun will not fire even if the "safety" is in the "on safe" position. See "**Operation of the Safety**" in your owner's manual for instructions on operation of your gun's "safety."

3. ***LIKE ANY MECHANICAL DEVICE, A "SAFETY" CAN SOMETIMES FAIL; IT CAN BE JARRED OR INADVERTENTLY MANIPULATED INTO AN UNSAFE CONDITION.***

Mechanical "safeties" merely aid safe gun handling and are no excuse for pointing your shotgun's muzzle in an unsafe direction.

While it is a good idea to "test" your shotgun's mechanical "safeties" periodically for proper function, never test them while your firearm is loaded or pointed in an unsafe direction. Safe gun handling does not stop with your gun's mechanical "safety" devices -- it starts there.

Always treat this shotgun with the respect a loaded, ready-to-fire firearm. ***NEVER TEST THE MECHANISM OF ANY FIREARM WHILE IT IS LOADED OR POINTED IN AN UNSAFE DIRECTION.***

4. ***WHENEVER YOU HANDLE A FIREARM, OR HAND IT TO SOMEONE MAKE SURE IT IS COMPLETELY UNLOADED.***

Always open the action immediately and visually check the chamber magazine. Make certain the chamber does not inadvertently contain any ammunition. Always keep the chamber empty and the "safety" in the "on safe" position unless shooting is imminent.

5. ***DO NOT TRANSPORT ANY FIREARM LOADED. KEEP ALL FIREARMS UNLOADED DURING TRANSPORT, WHETHER IN A SCABBARD, GUN CASE, OR OTHER CONTAINER.***

6. ***HUNTING FROM ELEVATED SURFACES SUCH AS TREE STANDS IS DANGEROUS.***

Doing so may increase the risk of handling a firearm. The following rules should always be observed by you and those you hunt with: ***Always*** make certain that the stand being used is safe and stable. ***Always*** make certain that your firearm is unloaded when it is being taken up and down from the stand. ***Always*** make certain that your firearm is not dropped from the stand, or dropped while it is being taken up or down from the stand. ***Remember***, a loaded firearm may discharge when dropped, even with the safety in the "on safe" position.

7. **BEWARE OF BARREL OBSTRUCTION.**

Do this for the safety of both your gun and yourself. Mud, snow, and an infinite variety of other objects may inadvertently lodge in a barrel bore. It takes only one small obstruction to cause dangerously increased pressures that can ruin (swell or rupture) the finest shotgun barrel. **BEFORE CHECKING FOR A BARREL OBSTRUCTION, BE CERTAIN YOUR FIREARM IS FULLY UNLOADED.**

Make sure no live rounds are in the chamber. Place the safety in the "on safe" position, open the breech or action and look through the barrel to be sure it is clear of any obstruction. If an obstruction is seen, no matter how small it may be, clean the bore with a cleaning rod and patch as instructed for your particular firearm. Before the first firing, clean the bore with a cleaning rod and patch, and wipe away any anti-rust compounds in the action/chamber areas.

8. **ALWAYS UNLOAD ALL FIREARMS WHEN NOT IN USE.**

As a safety precaution, it is preferable to disassemble your gun for storage. Your responsibilities do not end when your firearm is unattended. Store your gun and ammunition separately -- well beyond the reach of children. Take all safeguards to ensure your firearm does not become available to untrained, inexperienced or unwelcome hands.

9. **USE THE PROPER AMMUNITION.**

The barrel and action of all Browning firearms have been made with substantial safety margins over the pressures developed by established American commercial loads. Nevertheless, Browning assumes no liability for incidents which occur through the use of cartridges of nonstandard dimensions which develop pressures in excess of commercially available ammunition with standards established by the Sporting Arms and Ammunitions Manufacturers' Institute (SAAMI).

BE ALERT TO THE SIGNS OF AMMUNITION MALFUNCTION.

If you detect an off sound or light recoil when ammunition is fired, **DO NOT LOAD MORE AMMUNITION INTO THE CHAMBER.** Open the action and remove all ammunition from the chamber. With the action open, glance down the barrel to make sure that a wad or other obstruction does not remain in the barrel. If there is an obstruction, completely clear the barrel before loading and firing again. Failure to follow these instructions can cause extensive damage to your gun and possible serious injury to yourself and others.

10. **MAKE SURE OF ADEQUATE VENTILATION IN THE AREA THAT YOU DISCHARGE A FIREARM. WASH HANDS THOROUGHLY AFTER EXPOSURE TO AMMUNITION OR CLEANING A FIREARM.**

Lead exposure can be obtained from discharging firearms in poorly ventilated areas, cleaning firearms or handling ammunition. Lead is a substance that has been known to cause birth defects, reproductive harm and other serious injury.

11. **NEVER INSERT A SHELL OF THE INCORRECT GAUGE IN ANY SHOTGUN.** The gauge of your shotgun is marked on the side of the barrel. Store all shells of different gauges in completely separate and well-marked containers. Never store shells of mixed gauges in a common container or in your pockets.

EXAMINE EVERY SHELL YOU PUT IN YOUR GUN. NEVER PUT A 20 GAUGE SHELL IN A 12 GAUGE GUN. The most common way to bulge or rupture a shotgun barrel is to drop a 20 gauge shell into a 12 gauge chamber. The 20 gauge shell, unfortunately, will not fall completely through the barrel; its rim is caught by the front of a 12 gauge chamber. Your gun will misfire (with the chamber appearing to be empty). It is then possible to load a 12 gauge shell behind the 20 gauge shell. If the 12 gauge shell is then fired, the result will be a so-called "12-20 burst" which can cause extensive damage to your gun and possible serious injury to you and others.

12. **USE SHELLS OF CORRECT LENGTH.**

The size of the chamber is inscribed, along with gauge and choke designations, on the side of the barrel. Do not use 3 1/2" shotgun shells in a shotgun or barrel with a 2 3/4" chamber or 3" chamber. Do not use 3" shells in a shotgun chambered for a 2 3/4" shells. Doing so can result in a build-up of dangerously high pressures that may damage your gun and possibly cause serious injury to yourself or others.

13. **DO NOT SNAP THE FIRING PIN ON AN EMPTY CHAMBER -- THE CHAMBER MAY NOT BE EMPTY!**

Treat every gun with the respect due a loaded gun, even though you are certain the gun is unloaded.

14. **KEEP YOUR FINGERS AWAY FROM THE TRIGGER WHILE LOADING AND UNLOADING UNTIL YOU ARE READY TO SHOOT.**

15. **BE SURE OF YOUR TARGET AND BACKSTOP.** Particularly during low light periods. Know the range of your ammunition. Never shoot at water or hard objects.

16. **ALWAYS UNLOAD THE CHAMBER AND MAGAZINE OF ANY FIREARM BEFORE CROSSING A FENCE, CLIMBING A TREE, JUMPING A DITCH OR NEGOTIATING OTHER OBSTACLES.**

Never lean or place your loaded shotgun on or against a fence, tree, car or other similar object.

17. **WEAR EYE AND EAR PROTECTION WHEN SHOOTING.** Unprotected, repeated exposure to gunfire can cause hearing damage. Wear ear protectors (shooting earplugs or muffs) to guard against such damage. Wear shooting glasses to protect your eyes from flying particles. Always keep a safe distance between the muzzle of your firearm and any persons nearby, as muzzle blast, debris and ejecting shells could inflict serious injury. Also, wear eye protection when disassembling and cleaning all firearms to prevent the possibility of springs, spring-tensioned parts, solvents or other agents from contacting your eyes.

18. **DROPPING A LOADED GUN CAN CAUSE AN ACCIDENTAL DISCHARGE.**

This can occur even with the "safety" in the "on safe" position. Be extremely careful while hunting or during any shooting activity to avoid dropping any firearm.

19. **IF ANY FIREARM FAILS TO FIRE, KEEP THE MUZZLE POINTED IN A SAFE DIRECTION.**

Hold this position for a minimum of 30 seconds. Carefully open the action and remove the shell. If the primer is indented, the shell should be disposed of in a way that cannot cause harm. If the primer is not indented, your firearm should be examined by a qualified gunsmith and the cause of the malfunction should be corrected before further use.

20. **BE DEFENSIVE AND ON GUARD AGAINST UNSAFE GUN HANDLING AROUND YOU AND OTHERS.** Don't be timid when it comes to gun safety. If you observe other shooters violating any of these safety precautions, politely suggest safer handling practices.

21. **BE CERTAIN YOUR SHOTGUN IS UNLOADED BEFORE CLEANING.**

Because so many accidents occur when a firearm is being cleaned, special and extreme care should be taken to be sure your gun is unloaded before disassembly, cleaning and reassembly. Keep ammunition away from the cleaning location. Never test the mechanical function of any firearm with live ammunition.

22. ***SUPERVISE AND TEACH FIREARMS SAFETY TO ALL MEMBERS OF YOUR FAMILY -- ESPECIALLY TO CHILDREN AND NONSHOOTERS.***

Closely supervise newcomers to the shooting sports. Encourage enrollment in hunting/shooting safety courses.

23. ***NEVER DRINK ALCOHOLIC BEVERAGES OR TAKE ANY TYPE OF DRUGS BEFORE OR DURING SHOOTING.***

Your vision and judgment could be dangerously impaired, making your gun handling unsafe to you and to others.

24. ***PERFORM PERIODIC MAINTENANCE -- AVOID UNAUTHORIZED SERVICING.***

Your firearm is a mechanical device which will not last forever, and as such, is subject to wear and requires periodic inspection, adjustment and service. Browning firearms should be serviced by a Browning Recommended Service Center or by Browning's service facility in Arnold, Missouri. Browning cannot assume any responsibility for injuries suffered or caused by unauthorized servicing, alterations or modifications of Browning firearms.

25. ***READ AND HEED ALL WARNINGS*** in these instructions, on ammunition boxes and with all accessories that you install on your firearm. It is your responsibility to secure the most up-to-date information on the safe handling procedures of your Browning gun. Browning assumes no liability for incidents which occur when unsafe or improper gun accessories or ammunition combinations are used.

26. Browning reserves the right to refuse service on firearms that have been altered, added to or substantially changed. Removal of metal from barrel(s), or modification of the firing mechanism and/or operating parts may lead to Browning's refusal of service on such firearms. Browning will charge the owner for parts and labor to return the firearm to original Browning specifications.

DO NOT, UNDER ANY CIRCUMSTANCES, ALTER THE TRIGGER, SAFETY OR OTHER PARTS OF THE FIRING MECHANISM OF THIS OR ANY OTHER FIREARM. FAILURE TO OBEY THIS WARNING MAY RESULT IN INJURY OR DEATH TO YOURSELF OR OTHERS.

BE CAREFUL!



WINCHESTER
RIFLES AND SHOTGUNS

U.S. Repeating Arms Company, Inc.

275 Winchester Avenue

Morgan, Utah, U. S. A. 84050-9333

www.winchester-guns.com

Winchester trademarks licensed from Olin Corporation.

AC0205/02018