

HP 60 Problem Resolution

Select the topic you would like assistance with:

[Refill Alert Notifications](#)

[Ink Level Monitoring Problems \(with possible error messages\)](#)

[Printer Rejects Ink Cartridge with Error Message\(s\)](#)

[Printer Reset Procedures](#)

[HP Tap Tests \(Built-in Diagnostic Tests\)](#)

[Print Quality Issues](#)



No...your cartridge is not empty since it was just refilled!

Many of the HP 60 & 60XL ink cartridge alert and error messages you may encounter using refilled ink cartridges can typically be overcome using the steps provided below. However, in some cases a marginally performing cartridge might be considered faulty by the printer. In this event, printer error bypass and HP diagnostic test procedures have been provided to help you correct and/or diagnose the cause of failure.

Refill Alert Notifications

1. “Non-Genuine Cartridge” / “Used Print Cartridge”

Low Ink Warning & Other Messages – Youtube Video:

http://www.youtube.com/watch?v=5_suW3U6e08

This message is typically generated by the printer (those with LCD screens) since it recognizes the used cartridge state (i.e. when original cartridge reaches an ‘out of ink’ condition this information is recorded). When the refilled cartridge is installed back into the printer, the printer recalls the cartridge was already used and displays the “**non-genuine cartridge**” or “**Used xxx print cartridge installed**” message.



This is nothing to be alarmed over; simply press proceed/continue/accept/yes/OK to dismiss the prompt if available.



In many cases a “**Refilled or Depleted Cartridge Detected**” message may also be displayed on the Windows popup. Select Ok or Continue to bypass.





NOTE: After a cartridge is refilled, the printer cannot track the ink level. Where applicable, ignore low/empty alert messages and any ink sensor warnings, by pressing 'Ok' or 'Continue'. In most cases, the only way to gauge current ink levels is by monitoring output print quality (i.e. watch for color loss during printing).

2. Common Error Messages/Display Conditions:

- Steady (non-serious) or blinking (serious) cartridge lights on the printer
- A message that says "Check black/color cartridge" on your monitor or on the printer display
- A similar message that says "Remove and check the black/color cartridge"
- A printer window or toolbox appears that shows a message that a "Cartridge is not seated properly"
- "Replace your black/color cartridge" message
- "The cartridge has failed" message

Ink Level Monitoring Problems (with possible error messages)

Low Ink Warning & Other Messages – Youtube Video:

http://www.youtube.com/watch?v=5_suW3U6e08

After a cartridge is refilled, the printer cannot track the ink level. Ignore any incorrect low/empty alert messages and any ink sensor warnings, by pressing 'Ok' or 'Continue'.

New HP 60 Cartridges



Refilled HP 60 Cartridges



NOTE 1: If you have installed a refilled or remanufactured cartridge, or a cartridge that has been used in another printer, the ink level indicator might be inaccurate or unavailable.

NOTE 2: Ink level warnings and indicators provide estimates for planning purposes only. When you receive a low-ink warning message, consider having a replacement cartridge available to avoid possible printing delays.

1. Disabling Low Ink Warning Messages



Inkjet 411

On many Hewlett Packard printers, the “Low on Ink” warning message that appears on your PC has a check box that reads “Don’t Show This Again” or “Dismiss this message”. Simply check this box to eliminate these warning messages from re-appearing. Other HP printers may display a message on the computer screen or directly on the printer LCD display that reads as follows: “Original HP Ink in Tri-Color (or Black) cartridge has been depleted, press OK to continue.” Often you can simply click the “OK” icon on your computer screen or press the “OK” button on the printer and the message will be eliminated. Some of the newer HP printer models have embedded blocks which require more advanced driver setting changes, refer to bypass procedures below:

Bypass Procedure #1*

- a. Remove all ink cartridges from the printer, both black and color, new or refilled.
- b. Turn the printer off by pressing the **Power** button (you may need to hold it for 5 seconds and release to power off). Let the printer stay off for 20 seconds.
- c. Turn the printer back on. Allow the printer to go through the usual start-up process and recognize there are no cartridges installed.
- d. Repeat Steps 2 and 3 until the printer has been turned on and off five times. This process resets and removes the last five ink cartridge IDs used from the printer's memory, allowing the printer to believe the refilled ink cartridge is new.
- e. Replace the ink cartridges and attempt to print.

*This procedure only works on certain printer models

Bypass Procedure #2*

HP Deskjet F4280 Youtube procedure: <http://www.youtube.com/watch?v=-QEHBqQUfHY>

- a. Remove all paper from the paper tray.
- b. Press and hold the **Power** button.
- c. Simultaneously, briefly press the **Cancel** button and release.
- d. Release the **Power** button (NOTE: on some printer models both the Power and Cancel buttons need to be released simultaneously).
- e. Place alignment test page into scan bed and select Scan.
- f. Ink levels will now be temporarily reset.
- g. The ink level LED (light) may illuminate at this point; this will not impact ink level monitoring nor printer operations.
- h. The printer will attempt to print a diagnostic sheet....DO NOT LOAD paper. Wait for approximately 1 minute, the Resume light should be illuminated/blinking (with an ‘E’



Inkjet 411

- error message displayed).
- i. Press **Cancel** to cancel the diagnostic print job – printing should now be permitted.
 - j. Load paper and return to normal printer operations, if permitted.

*The ink level monitor reset procedure above applies the HP Deskjet F4280, F2480, F380, and Deskjet 6988 printer models which use the #60 cartridge. It may also work for similarly designed printer models, including printers which use #61 cartridges, but not for all. For printer models which do not have a Cancel button (i.e. D1660), press and hold the Power button while it is flashing, then release.

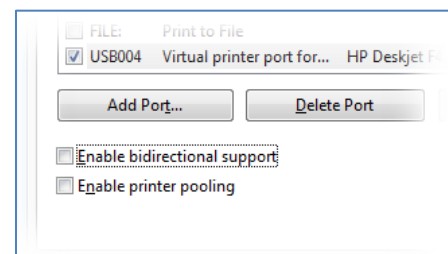
Bypass Procedure #3* (*PC Win XP/2000 only*): Disabling the low ink messages on an HP Printer removes future warnings about ink levels before or after the print process. To eliminate low ink alerts on older HP software versions* (i.e. Windows XP), you may disable the HP Status Monitor or ink level management settings. Access the HP printer settings either through the Windows Devices and Printers screen or the Notification Area. You may wish to manually check ink levels. When lighter or blotchy text appears on paper, then it's likely the ink levels are low.

- a. Click the "Start" button and click the "Devices and Printers" option.
- b. Right-click your "HP C4680" printer and click the "Properties" option.
- c. Click the "Advanced" tab and click the "HP PrinterPreferences" button (i.e. Win XP). The HP Printer Settings screen appears on screen.
- d. Click the "Disable HP Ink Level Monitor" check box and click the "OK" button to apply the changes.

* Available on Win XP and earlier operating systems only. While Win 7 and later does not appear to support ink level monitor disabling, it does not interfere with the use of refilled ink cartridges.

Bypass Procedure #4* (*Majority of Operating Systems*): Some HP printers come with software that warn the customer when an ink cartridge is almost out of ink. The printer's software communicates with the ink cartridges in the printer to determine the amount of ink left. If the ink cartridges in the printer have been refilled or are not genuine HP ink cartridges, the printer's software will display a warning that the cartridge is almost out of ink. Disabling this warning involves a short and simple process.

- a. Look for a message that reads "Don't Show This Again" on the "low ink" warning message. If such a message shows up, click on the box next to it to disable the warning.
- b. Click on the "Start" button on your computer. Select "Printers and Faxes." Right-click on your printer's icon and select "Properties."
- c. Click on the "Ports" tab in the properties window and click on the check mark in the box that says "Enable Bi-



Directional Support." Make sure the box no longer has a check mark and click on "Apply" then "OK."

* **WARNING:** Disabling Bi-directional support may cause some non-printing functions to cease working (i.e. scanner/fax, etc).

Macintosh Procedure (i.e. HP OfficeJet 6500 on a MacBook Pro OS 10.7.4)

1. Open HP Utility.
2. Select All Settings.
3. Select Message Center.
4. Near top right, select Settings.
5. Change your alert settings.

Printer Rejects Ink Cartridge with Error Message(s)

1. HP 60 Cartridge Errors

As the electronics in the ink cartridge and the printer communicate with each other, sometimes the printer will incorrectly identify an ink cartridge as empty or non-functional. These error messages can appear as PC screen messages, printer LCD display messages, or as blinking lights on the printer. Depending on your printer model and type of error condition, please adhere to the suggested printer reset procedure below as the button selections vary slightly between printer model series*

HP 60 ink cartridges which have been newly refilled and installed into the HP printer may produce the following 'shutdown' error messages:

- “Incompatible Print Cartridges”
- “Print Cartridges Missing or Not Detected”
- “Tri-Color / Black Cartridge Problem”
- “Installed Incorrectly”
- “Print cartridge is not intended for use in this product”
- “Print cartridges in wrong slot”
- “Print cartridge problem”



Installed: Rightmost, Tri-color Ink Cartridge

NOTE: These errors may also occur with the new HP cartridges under certain circumstances (i.e. defective cartridge and worn or damaged printer). The cartridge might need to be reinstalled, the electrical contacts could be dirty, the cartridges might need to be aligned, or there could be a failure of the cartridge or printer (i.e. cartridge contact area inside printer).

2. “Now Printing Alignment Page”but nothing prints

To help bypass the error message:

- a. Open printer and remove both the color and black cartridges.
- b. Close the printer and wait for the prompt to install the tri-color cartridge.
- c. Open the printer and install the tri-color cartridge **ONLY**.
- d. Close the printer and wait for the prompt to install the black cartridge.
- e. Open the printer and install the black cartridge.
- f. Close the printer and it should then prompt you to insert paper to perform the cartridge alignment.
- g. If this does not correct the error, refer to **Printer Reset Procedures**.

* This sometimes occurs due to poor electrical contact with cartridge, but more likely the cartridge has electrically failed and will probably need to be replaced.

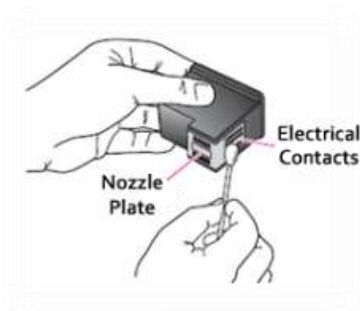
3. “Unrecognized Cartridge” or “Incompatible Ink Cartridge”

The contact between the ink cartridge and the printer must be clean for proper functioning. If any dirt, ink or paper dust is on the contacts, the printer may indicate that the ink cartridge is

bad. To ensure a clean contact, follow the steps below:

(1) Remove and re-install the cartridge:

- a. Turn the printer on; open the printer to access the print cartridges.
- b. Remove the suspect cartridge(s) from the station. Clean electrical contacts if dirty.
- c. Re-install the cartridges in their stations.
- d. Close the printer.
- e. Turn off the printer for a few seconds and then turn it back on.





- f. Print a test page following your printer's instructions.
- g. If this does not work, please proceed to step (2).

* If there is ink on the "wiring" of the cartridge (copper lines within "sticker portion") you may get these types of error messages – refer to complete cartridge cleaning procedures below.

(2) Clean the contacts on the printer and the ink cartridge (refer to complete *HP Cartridge/Printer Cleaning Procedure* section down below):

- a. Turn on the printer; open the printer to access the print cartridges.
- b. Remove the suspect cartridge(s) from the station.
- c. Using a clean, dry lint-free cloth wipe the contacts on the print cartridge from top to bottom. The contacts inside the printer may also need to be cleaned.
- d. After cleaning the print cartridge and printer contacts, re-install the print cartridges and close the printer.
- e. Print a test pattern to determine if the problem has been fixed; if not proceed to HP Tap Test procedures below.

Printer Reset Procedures

If you suspect there is a cartridge-related problem only, then refer to 'HP Tap Test' procedures below. To reset the printer, several solutions are available for specific printer models. A general (standard) printer reset procedure is also provided for any printer model not included below.

1. General Printer Reset - for all Photosmart / Deskjet / Officejet printers:

- a. Turn the printer on; open the printer to access the print cartridges.
- b. Remove both ink cartridges from the station.
- c. Turn printer off for 30 seconds.
- d. Turn the printer on; re-install the cartridges in their stations.
- e. Close the printer; resume normal printer operations if possible.
- f. Remove (pull out) the power plug (at printer or receptacle); wait 1 minute and then re-install the power plug and power on the printer.
- g. Reinstall cartridges and close the access door.
 - a. Reset procedure for models with # key (i.e. Officejet series):
 - i. Unplug power cable while the printer is ON.

Inkjet 411

- ii. Press and hold the '#' and '6' button (or alternatively the '9' key), and plug the cable back into the printer.
- iii. Continue holding the buttons down for 20 seconds, and then release.
- iv. Then turn the printer off and on. Check for print operations.

2. HP Photosmart C46xx/C4700 printer series:

- a. Disconnect power plug from printer.
- b. While holding **Power** button, reconnect power plug to printer. Memory light will illuminate (if present). Release the **Power** button.
- c. Press **Power** button again. After the printer initializes, gently and alternately 'tap' the two left buttons (**OK** and **Return**) on the control panel until the 'Support' menu screen is visible (steps a. thru d. may need to be repeated several times for a successful access)
- d. Browse Support Menu until 'Resets Menu' is displayed. Press **OK**. Press **upper right** button until 'Semi-Full Reset' is displayed. Choose **OK** to reset the printer.



3. HP Photosmart e-AiO D110:

- a. At printers touchscreen display, press **Return, Cancel, Return, Return** to access the diagnostic menu.
- b. Choose either the Semi-reset or Full-reset, select **OK**.



HP Tap Tests (Built-In Diagnostic Tests)

To help determine if either of the ink cartridges has (1) electrically failed, (2) is potentially mating improperly and (3) all nozzles are firing properly, conduct an internal diagnostic 'Tap Test' (**NOTE: tap test '41' or '10' diagnostic prints are available on all 60-ink series printer models**).

HP Deskjet F4200 series printers – Tap 41 Diagnostic Test Procedure:

Youtube Support Video: <http://www.youtube.com/watch?v=16uXSBwTan8>

1. Load Letter/A4-size paper into paper feed tray.
2. If any lights are blinking, first press Cancel to attempt to clear.
3. While holding the **Power** button, press **Cancel** button 4 times, then press the **Resume** button once. Release the **Power** button.
4. Within a minute the Tap 41' diagnostic test print should print or attempt to print.



HP Deskjet F42xx
Control Panel

5. Inspect Tap 41 test print in 3 sections to determine health of ink cartridge.
 - a. Check for presence of a 'current' cartridge error message in top section
 - "Too Many Good Nozzles." / "Pen in chute...shorted control lines"
 - "Wrong pen Type" / "Unknown Pen Type"

NOTE: In many cases the ink cartridge may just need to be reset (i.e. 3 of the 4 errors listed above). If black fails to print then perform a Tap 10 test (Power + Cancel + Resume)

- b. Check cartridges functional nozzle count (ideally a good Color cartridge nozzle count is = 1248 nozzles, while Black = 336 (standard cartridges).

Nozzle Count	HP 60 Color	HP 60 Black
Bxxxx Fxxxx:	0	0
Gxxx Fxx:	1248	336

- More than a 20% nozzle failure rate would be considered deficient to support adequate print operations (see Bxxxx / Fxxxx line).
- If more than 1248 (color) or 336 (black) nozzles are good, then cartridge is defective.

Inkjet 411

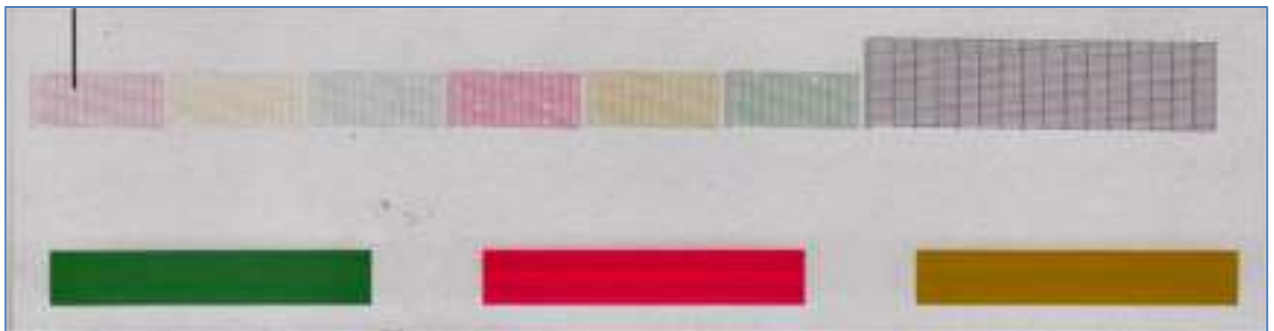
Example #2- portion of cartridge nozzles are electrically bad – ink cartridge will likely need to be replaced (i.e. printer suffers “Refer to Printer Documentation” or “Cartridge(s) Error”):

Current Error: Pen in right chute has 1 or more open or shorted control lines.
 Previous Error: Pen in right chute has 1 or more open or shorted control lines.

- c. Typically with the error message (“Too Many Good Nozzles...”, etc.), a significant number of blown cartridge nozzles displayed in the T01 thru T16 fields (indicated as X’s / O’s), or more than 20% failed nozzles are shown bad, signifies there is a damaged ink cartridge. In addition, if greater than 1248 (color) or 336 (black) nozzles are good, then cartridge is also electrically damaged.

Should be 336 good black nozzles (252 = 75%)		
BXXXX FXXXXX: GXXXX RXX:	0 1248	0 252
Damaged #60 Black Cartridge		

- d. As an option, activate the ‘Tap 10’ test print (i.e. POWER + CANCEL) to see which nozzles are misfiring in each color, as represented as horizontal lines in the nozzle test patterns



(i.e. in the example above 5-6 nozzles are misfiring in the Magenta cartridge - at center):

NOTE: the black ink cartridge will need to be ‘somewhat’ functional as the Tap 41 test print is normally printed in black. For printers which support automatic ink backup mode printing, the Tap 41 test print may be printed in either black or composite black (i.e. CMY), depending on the health of either cartridge. Rerun the Tap 41 test pattern using a new ink cartridges to validate a suspected defective cartridge.



HP Deskjet F2400/F4400/F4500 series printers – *Tap 41 Diagnostic Test Procedure:*

Youtube Support Video: <http://www.youtube.com/watch?v=m-OM09NvNqg>

1. Load Letter/A4-size paper into paper feed tray.
2. If any control panel lights are blinking, first press Cancel to attempt to clear.
3. While holding the **Power** button, press **Cancel** button 4 times, then press the **Color Copy** button once. Release the **Power** button. Within a minute, the 'Tap 41' diagnostic test print should print.
4. Inspect Tap 41 diagnostic test print in 3 sections to determine health of ink cartridge(s). See above for pass/fail criteria. Reseat and/or replace ink cartridges accordingly.

HP Deskjet F24xx
Control Panel



HP Deskjet F44xx/F45xx
Control Panel



HP Photosmart C4600/C4700 series printers – *Tap 41 Diagnostic Test Procedure:*

Youtube Support Video: <http://www.youtube.com/watch?v=ghxjLCn07Jo>

TECHNICAL NOTE: If the printer's error message prohibits you from accessing the diagnostics menu (i.e. "Print Cartridge Error" or "Cartridge(s) Problem"), you will need to replace the suspect cartridge with a new/good cartridge to proceed with the following diagnostic testing. Install the new/good cartridge, then access the diagnostics menu using the steps down below. Just prior to activating the Tap 41 test print, swap the good cartridge out with the suspected faulty cartridge. Select Ok, the diagnostic test pattern should print out.



1. Load Letter/A4-size paper into paper feed tray.
2. Disconnect power plug from printer.

Inkjet 411

3. While holding **Power** button, reconnect power plug to printer. Memory light may temporarily illuminate for a few seconds – this is normal. Release the **Power** button.
4. Press **Power** button again to power on printer.
5. After the printer initializes, gently and alternately ‘tap’ the two left buttons (**OK** and **Return**) on the control panel for a few seconds until the Support menu screen is visible



6. At ‘Support’ menu, select the upper right button until the ‘Reports Menu’ is visible.



7. At the Reports Menu, Press **OK**, then press **upper right** button until ‘print mech button tap’ menu is displayed. Press **OK**, the ‘code = 0’ menu should be displayed.



8. Using the **right side** buttons, press until ‘code=41’ is displayed.

9. Press **OK**. Within a minute the Tap 41 diagnostic test print should begin to print.



10. Inspect Tap 41 test print in 3 sections to determine health of ink cartridge(s). See above for pass/fail criteria. Reseat and/or replace ink cartridges accordingly.

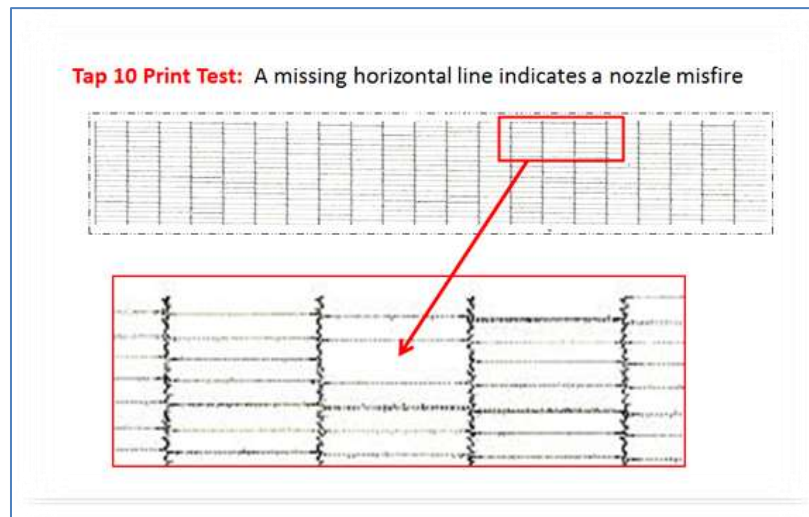
HP Deskjet D2500/D2600 series printers – *Tap 10 Diagnostic Test Procedure:*

Youtube Support Video: <http://www.youtube.com/watch?v=RTFOBtdthAc>

1. Load Letter/A4-size paper into paper feed tray.
2. If any control panel lights are blinking, first press Cancel in an attempt to clear.
3. While holding the **Power** button, press the **Cancel** button once. Within a minute, the Tap 10 diagnostic pattern should print (or attempt to print). A series of stair-step patterns and color and black density bars should be printed along with miscellaneous printer information settings.
4. Inspect each stair-step pattern. A missing horizontal line indicates a misfire or clogged ink nozzle. Typically, a loss of greater than 20% of total nozzles, for each color, can lead to degraded print quality performance depending on the print mode (i.e. draft, normal,

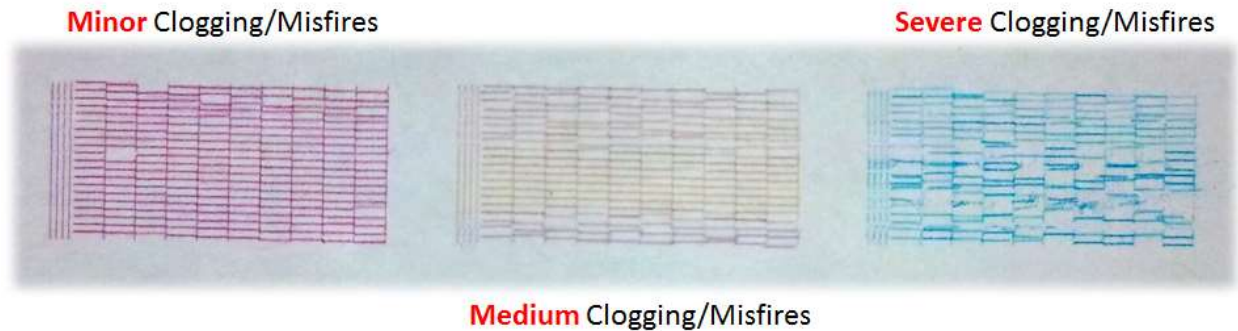


HP Deskjet
D25xx Control
Panel



best, etc.).

- a) For minor nozzle failures (i.e. less than 20 missing lines) it is suggested to run the printer clean utility or print a test print from the <http://www.inkjet411.com> web site.
- b) For nozzle losses greater than 20 it is suggested to thoroughly clean the ink cartridge and carriage flex cable contacts (refer to Cleaning Procedures below).



- c) If, after following thorough cartridge and printer cable cleaning, printer error messages persist and/or significant nozzle loss is visible in the Tap 10 diagnostic print (i.e. more than 100 nozzles are out in a color), then the cartridge, or cartridges, may be electrically damaged or severely clogged. Cartridge replacement will likely be required.
- d) Install new ink cartridge or cartridges and repeat tap 10 diagnostic print test until the problem has been resolved.

*Procedures may vary between printer models.

HP printers which use HP 60/60XL ink cartridges: HP Deskjet D1660, D1663, D2500, D2530, D2545, D2560, D2563, D2566, D2568, D2645, D2660, D2663, D2668, D2680, D5560, F2400, F2420, F2423, F2430, F2440, F2480, F2483, F2488, F2492, F2493, F4200, F4210, F4213, F4224, F4230, F4235, F4240, F4250, F4272, F4273, F4274, F4275, F4280, F4283, F4288, F4292, F4293, F4400, F4435, F4440, F4450, F4470, F4472, F4473, F4480, F4492, F4500, F4580.

HP Photosmart C4600, C4610, C4635, C4640, C4650, C4670, C4673, C4680, C4683, C4685, C4688, C4690, C4700, C4740, C4750, C4780, C4783, C4785, C4788, C4793, C4795, C4798, C4799, HP Photosmart e-All-in-One Printer - D110a.

Print Quality Issues

1. HP Cartridge & Printer Cables - Cleaning Procedure

If intermittent cartridge error messages persist or poor print quality issues occur, ensure the cartridge's electrical contacts are completely clean of all ink and paper fiber residues. Follow the procedure below if you observe streaks or smudges in your printed output and you have already performed all three cleaning levels in the Clean Print Cartridges utility.

- a. Obtain cleaning supplies:
Clean distilled, filtered, or bottled water. Tap water may contain contaminants which could damage the cartridge. Clean cotton swabs or any soft, lint-free material that will

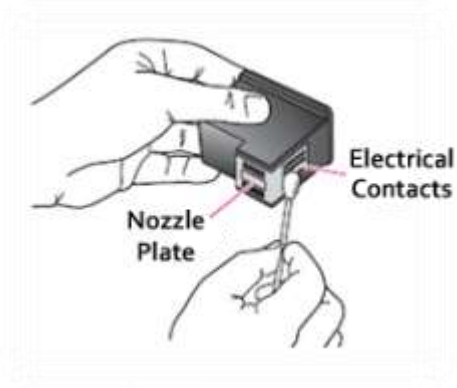
Inkjet 411

not stick to the cartridges (i.e. coffee filters). Paper towel to rest the cartridge(s) on during cleaning.

- b. Remove the cartridge and place it on a piece of paper with the nozzle plate facing up. If you see any debris or ink buildup, clean the cartridge as follows:
- c. Lightly moisten the lint-free cleaning material with clean water. Use the swab to wipe clean the faces and edges around the nozzle plate. The area to be cleaned is cross-hatched in the picture. Replace the cleaning material if it gets dirty.

Cleaning the cartridge:

- (1) – Clean in the cross-hatched area (pictured above).
- (2) – Only clean the nozzle plate (#2) if saturated/covered with ink; gently blot nozzle plate area to remove residue buildup.
- (3) – Only clean the copper-colored contacts (#3) if dirty (pictured below).



CAUTION: Unless dirty, it is suggested to NOT touch either the nozzle place or the copper-colored contacts, especially with your bare hands and/or without the proper cleaning materials. Touching these parts can cause clogs, ink failure, and bad electrical connections.

- d. Examine both cartridges. Even if the streaks are only visible in one color (streaks in black ink are commonly caused by fibers and debris stuck to the bottom of the tri-color print cartridge). Thoroughly clean the cartridge if you see any debris or buildup.



- e. Allow cartridge to sit for five minutes and/or use a new swab to dry the cleaned areas before you reinsert the cartridges into the printer.

Inkjet 411

NOTE 1: Do not touch the electrical contacts/surfaces with your bare fingers as there are oils in your skin which can interfere with proper cartridge connectivity and subsequent printer operations.

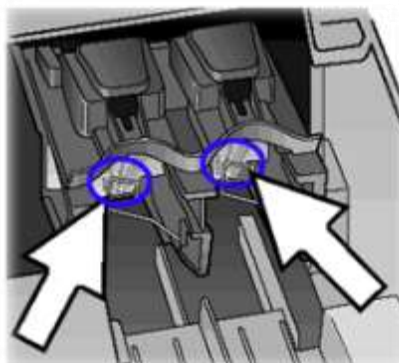


NOTE 2: Do not leave the print cartridges outside the printer for longer than 30 minutes. If a cartridge is left outside of the printer for too long, the ink will dry out and the cartridge will become unusable.

- f. Gently blot the cartridge Nozzle Plate with a damp lint-free towel/wipe – a small amount of ink should be dispensed, and be visible, on the towel (all 3 colors should be present for a Tri-color cartridge).
- g. If no ink is dispersed from nozzle plate (i.e. visible on towel) or ink cartridge completely fails to print on paper after installed in printer, then more drastic cartridge and printer cleaning steps will likely need to be performed to resume printer operations.



- 1) Clean printer carriage flexible cable contacts using isopropyl alcohol (99%) on damp cloth (or cotton swab). Ensure no fibers remain on contact surfaces.

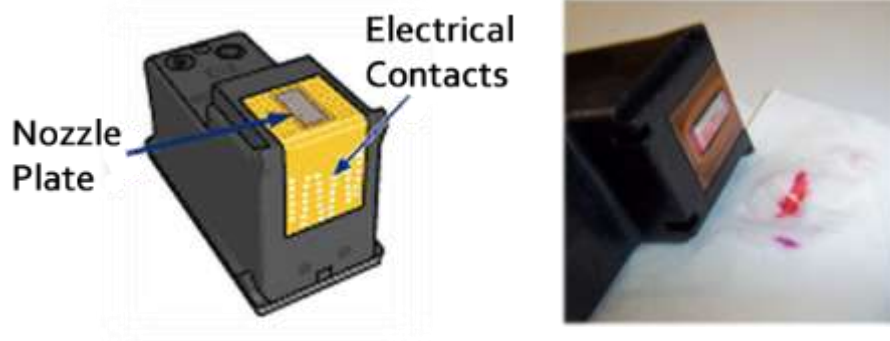


- 2) Immerse cartridge base (lower ¼ inch) in very hot, near boiling, distilled or de-ionized water for 2-4 minutes – **CAUTION!** A few table spoons of Isopropyl rubbing alcohol may be added to water to help break down the dried ink within the nozzle plate. Do not leave cartridge in water more than 20 minutes.



Inkjet 411

- 3) Completely dry the ink cartridge with a lint-free towel. Ensure the electrical contacts are thoroughly clean and dry. Blot cartridge nozzle plate to check for ink flow (i.e. commonly referred to “wetted” or “flowing”).



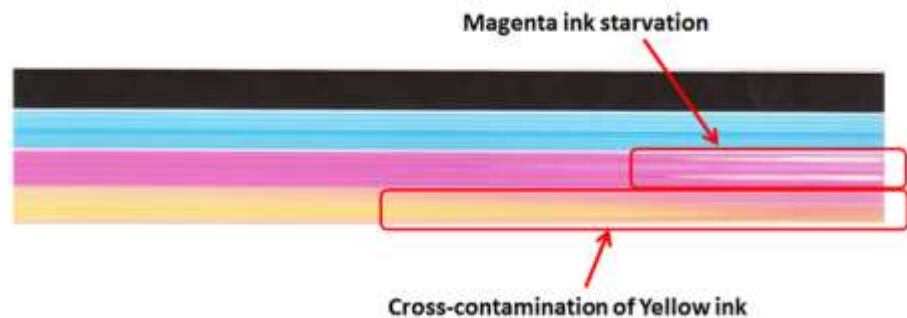
- 4) Reinstall cartridge into the printer and retest. If the cartridge fails to print then obtain a new ink cartridge.

NOTE: If the printer/cartridge is rarely used, or old, there is the possibility the internal foam has hardened (dried) to a point where the ink will not flow down to the nozzle plate. If this is the case then the cartridge will need to be replaced.

2. Service Station Caps - Cleaning Procedure

If printed output appears to be smeared with multiple colors* then the service station or parking pad is likely dirty (i.e. full of residual ink buildup) and will need to be cleaned. In the example below the yellow ink is contaminated with magenta ink (“cross contamination”).

Tap 10 test print
(partial)



Inkjet 411

Ensure that paper thickness/paper weight does not exceed manufacturers suggested printer specifications...the majority of consumer inkjet printers can only handle up to 24 lb plain paper thickness or up to 260 gsm photo paper weight.**

General service station cleaning procedure:

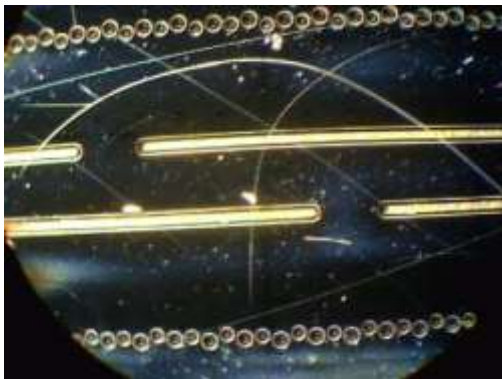
- a. Remove both ink cartridges from the carriage.
- b. Dampen a lint free cotton swab with distilled water. Gently clean both service station caps (parking pads) until thoroughly clean of ink residue / debris build-up.
- c. Inspect to ensure no fibers remain on station caps, if present.



* Storing ink cartridges upside down may also cause cross contamination or smearing of printed output.

** Repeated 'head strikes' with the paper surface can cause cartridge failure and/or print head leaking.

NOTE: Random droplets of ink on your paper are normally caused by contaminants on the printhead nozzle plate area such as a fiber, hair, built up dust, dried ink. The smallest fiber on the printhead can act as a wick and collect ink from the head until it is oversaturated and therefore drip. In many cases both the service station cap and both ink cartridges will need to be cleaned to correct this issue.



HP Printhead Nozzle Plate

(under 10X magnification)