

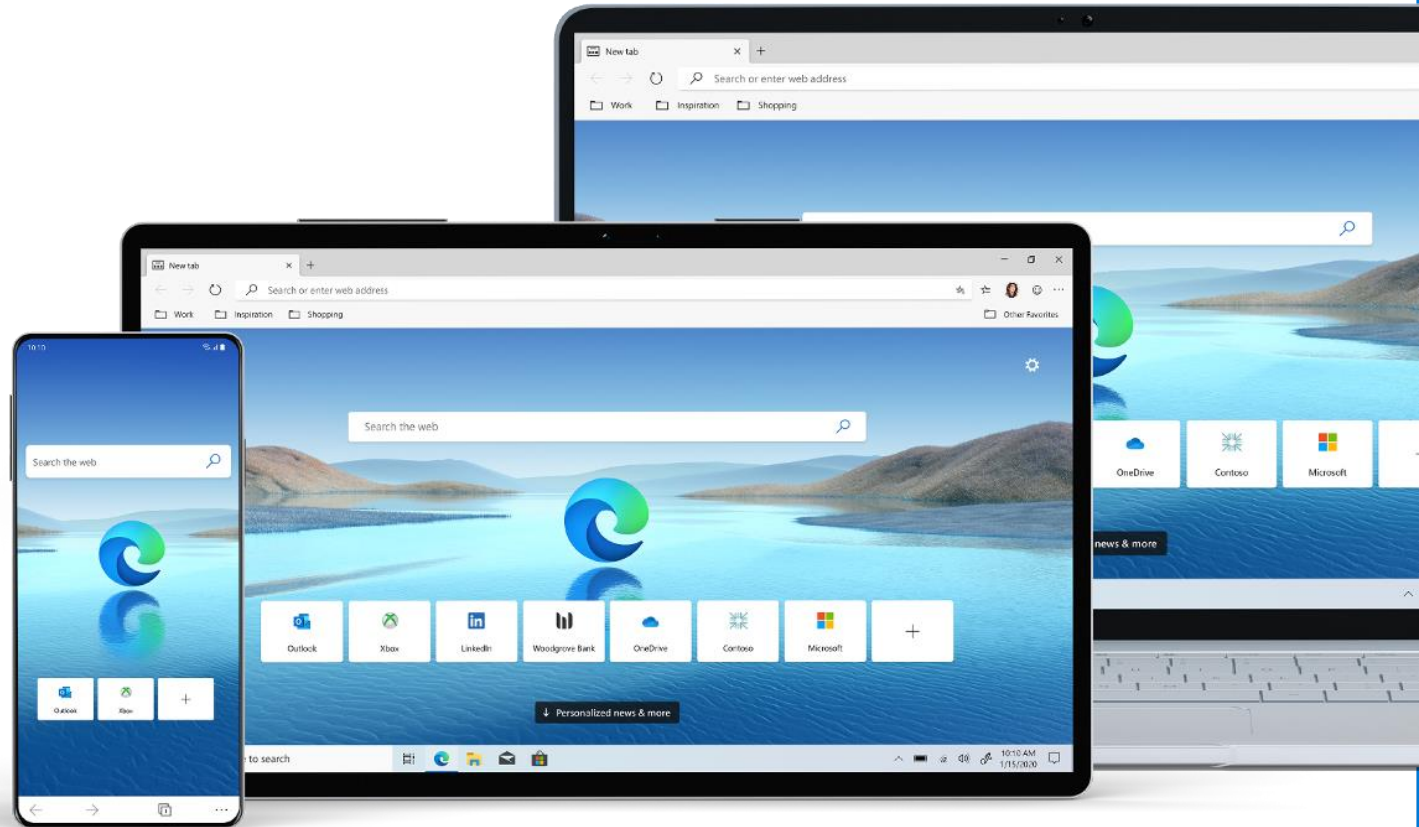


# Getting started with Microsoft Edge and IE mode



# Agenda

- Review Internet Explorer 11 End of Support timeline
- Introduce App Assure and compatibility promise
- The future of Internet Explorer
- Understanding and identifying legacy sites
- What is IE mode?
- Configuring, testing, and deploying IE mode
- Q&A

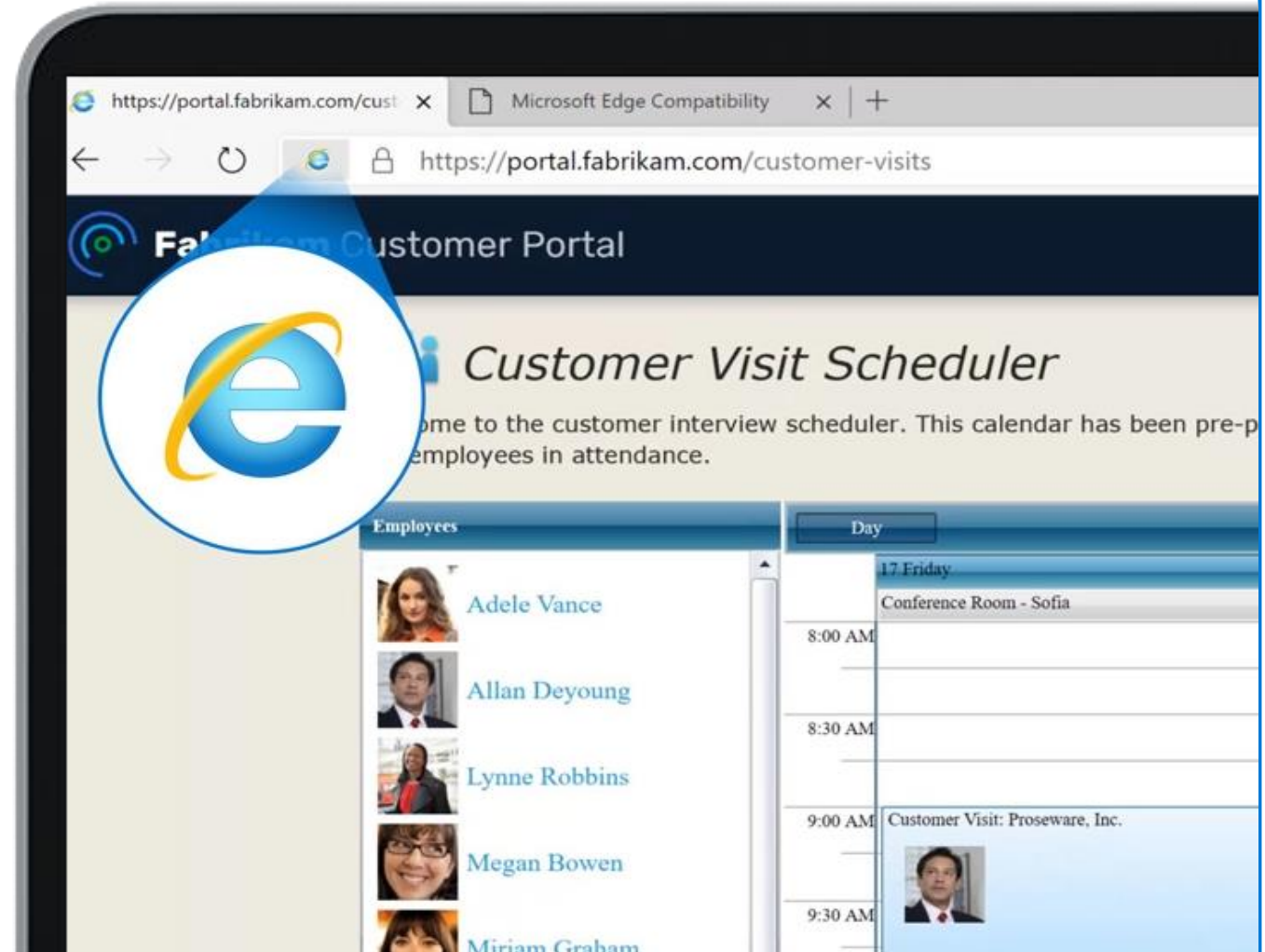


## The future of IE is in Microsoft Edge

Microsoft Edge with Internet Explorer mode offers built-in legacy browser support and is officially replacing the **Internet Explorer 11 desktop application**, which will be **retired** and go out of support on **June 15th, 2022**.

---

**Internet Explorer mode** will be supported **at least through 2029**, as it follows the lifecycle policy of Windows Client, Server, and IoT releases.



## App Assure and Microsoft Edge compatibility promise

If your web apps or sites work on Internet Explorer 11, supported versions of Google Chrome, or Microsoft Edge Legacy, they should also work with Microsoft Edge.

**If not, App Assure will help you to get them working with Microsoft Edge at **no additional cost** with an eligible subscription.**

See our full-service description at [aka.ms/AppAssure](https://aka.ms/AppAssure)

---

### **You can transition from IE!**

App Assure has supported almost 400 customers in successfully making the move to Edge already.



## What is a legacy site?

Legacy sites rely on pre-HTML5 technology and methods that are **not supported by modern browsers**

The most common examples we see today are **ActiveX** controls (such as Java)



## What happens to legacy sites on a modern browser?

- Functionality may be impaired
- Content might not display properly
- “Unsupported Browser” or similar messaging appears

Legacy sites: valuable assets that need a path to modernization

**1,678**

Average number of enterprise  
legacy web sites and apps

Legacy sites: valuable assets that need a path to modernization

**1,678**

Average number of enterprise  
legacy web sites and apps

**\$335K**

**Per site/app modernized**

\*Average cost of \$335,000 USD to  
modernize one app/site

\*A commissioned study in 2021, conducted by Forrester Consulting  
([aka.ms/EdgeTEIStudy](https://aka.ms/EdgeTEIStudy))

## The Dual Engine Advantage – Trident and Chromium

Microsoft Edge uses the Chromium engine for modern sites, and the Trident MSHTML engine from Internet Explorer 11 (IE11) for legacy sites.

**Microsoft Edge is the only browser with the dual engine advantage.**

---

### IE mode supports:

- All document modes and enterprise modes
- ActiveX controls (such as Java)
- Browser Helper Objects
- Internet Explorer settings and Group Policies



**Internet Explorer**



## How to identify legacy sites in your environment?

A common challenge is locating your legacy apps, to know how many and where they are! This is an essential first step to success.

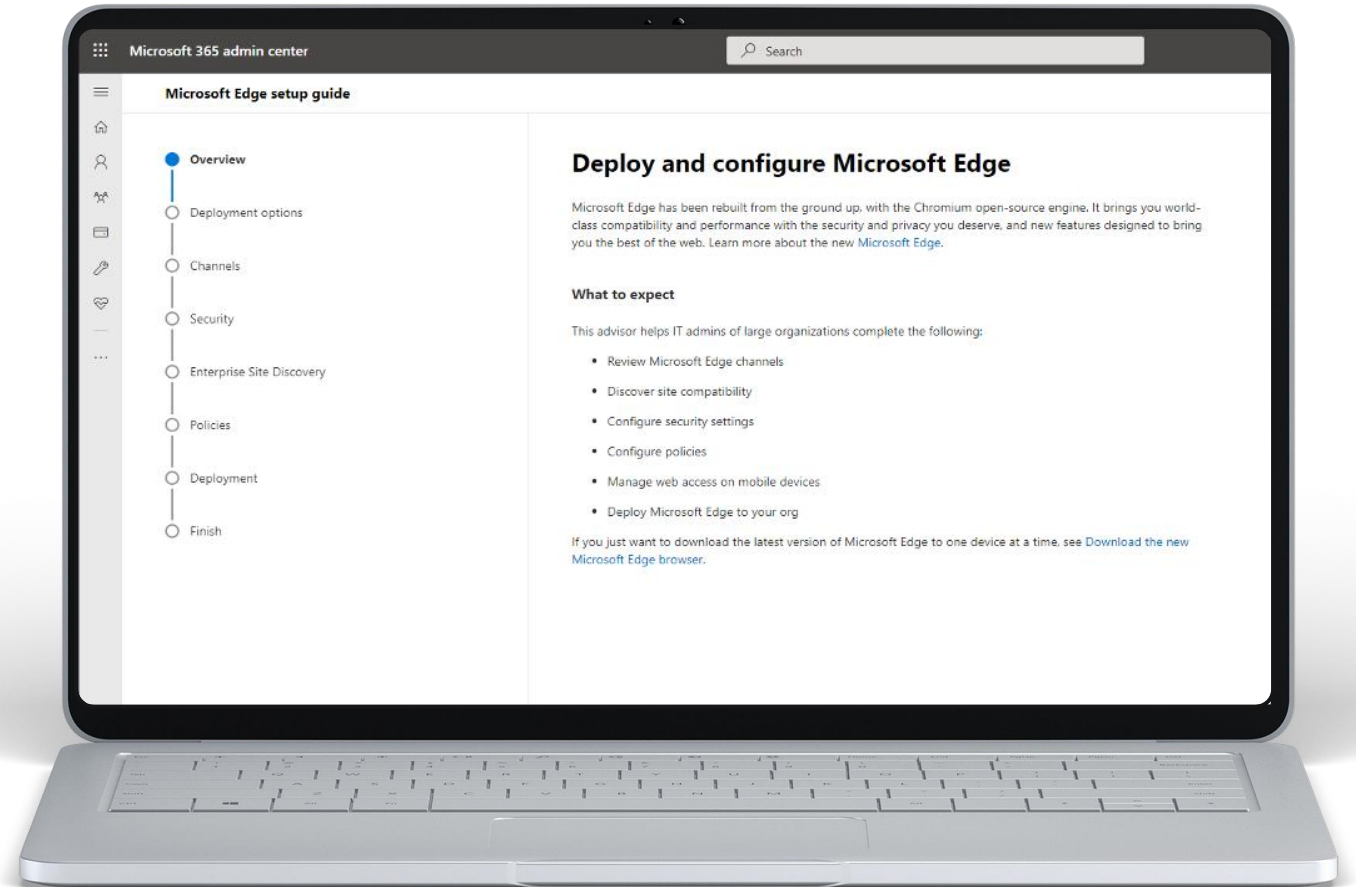
### RECOMMENDED READING:

Understand the big picture with the **IE Mode Getting Started Guide** ([aka.ms/IEmodeGuide](https://aka.ms/IEmodeGuide))

---

### Methods for successful legacy site inventory

- Use tool for site discovery: Edge Advisor [aka.ms/edgeadvisor](https://aka.ms/edgeadvisor)
- Utilize a SharePoint list for user reported feedback
- Ring-based testing for power users



# Use Edge Advisor to get started with Enterprise Site Discovery

The **Edge Advisor tool** in the **M365 Admin Center**:

- Helps prepare your environment to deploy Edge
- Configures scripts to perform site discovery
- Identifies sites that potentially need IE mode compatibility setting, which reduces manual testing time
- Highlights some commonly used enterprise policies

It typically takes **3-4 weeks** to run Enterprise Site Discovery

[aka.ms/edgeadvisor](https://aka.ms/edgeadvisor)

The screenshot shows the 'Discover and configure sites that require IE mode' page in the Microsoft Edge Admin Center. The page is divided into two main sections: a left-hand navigation pane and a main content area.

**Navigation Pane:** A vertical list of steps with radio buttons. The first step, 'Overview', is selected and highlighted with a blue dot. The other steps are 'Script configuration', 'Script download', 'Site data export', 'Site data review', 'Site list deployment', and 'Finish'.

**Main Content Area:**

- Get started with Enterprise Site Discovery:** A heading followed by a paragraph explaining that Enterprise Site Discovery helps detect sites that need IE mode in Microsoft Edge. It mentions that these are often intranet sites using legacy document modes or ActiveX controls, and that Microsoft Edge will use the Trident MSHTML engine from Internet Explorer 11 to render them.
- What tool are you using to manage Windows devices?:** A dropdown menu currently showing 'Configuration Manager'.
- Use a script to automate tasks:** A section with a paragraph explaining that a PowerShell script can automate most configuration tasks. Below this is a checked checkbox labeled 'Use a script to configure Enterprise Site Discovery'.
- Tasks automated by the script:** A section with a downward-pointing chevron icon, indicating a list of tasks.
- Prerequisites:** A section with a paragraph stating that certain services and roles must be installed and configured. Below this is a bulleted list:
  - Microsoft Endpoint Configuration Manager
  - Microsoft SQL Server Reporting Services
  - Configuration Manager Reporting Services point site role

At the bottom of the page, there is a blue button labeled 'Next'.

## Use Your Results to Prioritize Site Testing

We HIGHLY RECOMMEND that you focus first on sites that have **high page visits** and have **potential issues**.

- 1 Click "**Remove non-issue sites**" to remove sites expected to work using the Chromium engine.
- 2 Sort the list by "**Page visits**" and start testing sites with the highest number of pages visits.
- 3 This site has high use. **ActiveX has been detected** too. This site may need IE mode to be configured.

**Not all sites that have ActiveX detected in IE will need IE mode**, because some sites can serve content differently based on the browser. Some manual testing of the site may be needed.

[aka.ms/edgeadvisor](https://aka.ms/edgeadvisor)

## Site discovery example

### Review sites with potential compatibility issues

Upload an .xml file to see all the site data that you've collected from your users. This tool identifies sites that have potential compatibility issues to help you decide if you should configure them for [Internet Explorer mode \(IE mode\)](#) or as a [neutral site](#).

① The data uploaded here is only stored in the local browser session and isn't uploaded to Microsoft servers.

After your .xml file is uploaded, you can select a site to see more details and set them to open in IE mode. When you've added all the sites to your list, select **Preview and download site list** and export the list.

Preview and download site list Save progress 1 Remove non-issue sites + Add URL ↑ Upload

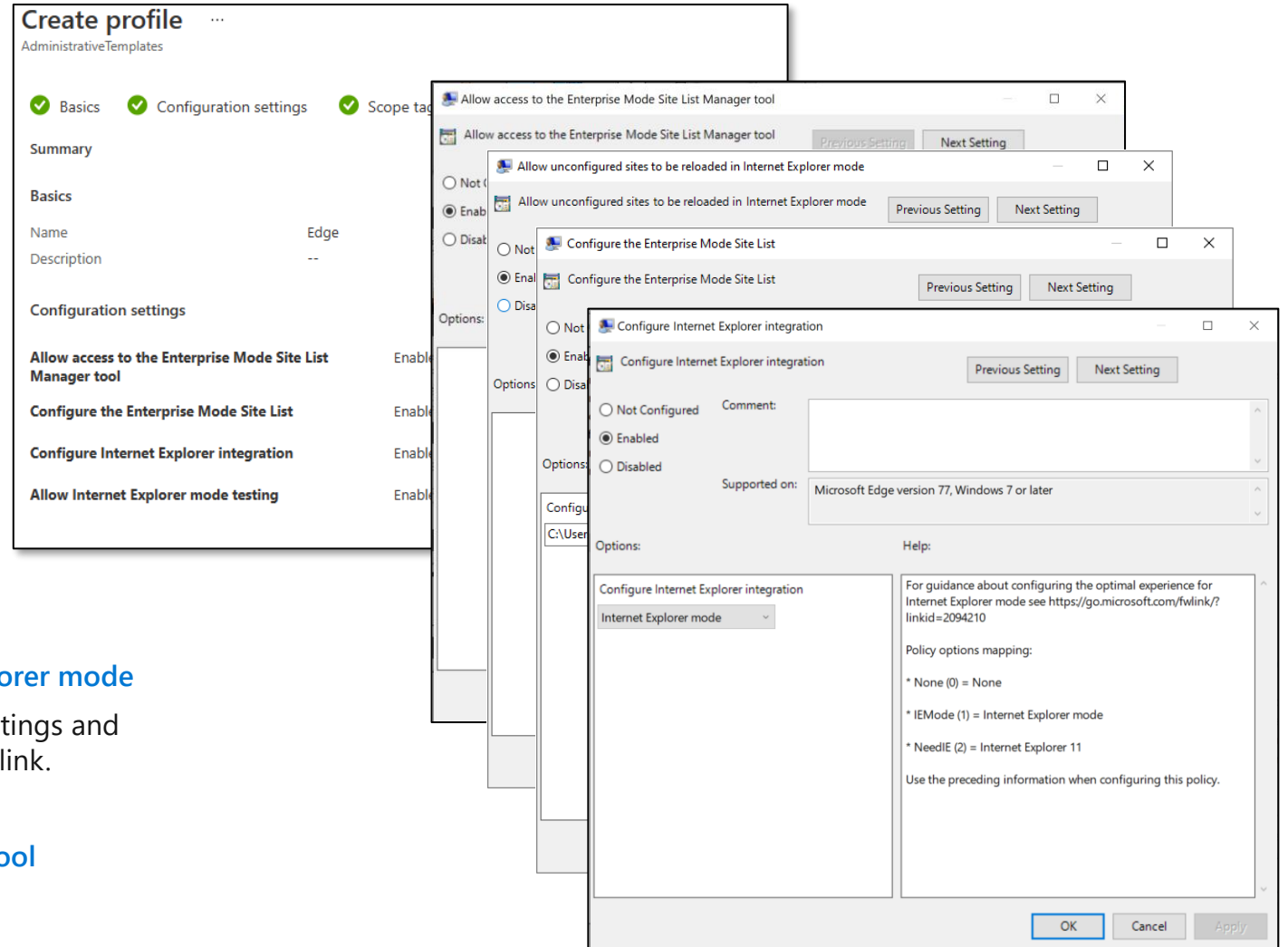
Filters: Compatibility detections: All Zones: All URL status: All

URL ↑	Compatibility detection	2 Page visits
companyportal.com	No issues detected	134
microsoft.com	No issues detected	311
office.com	No issues detected	325
portal.azure.com	No issues detected	110
portal.fabrikam.com/customer-visits	3 ▲ ActiveX control	201

# Configuring policies for enabling and testing IE mode

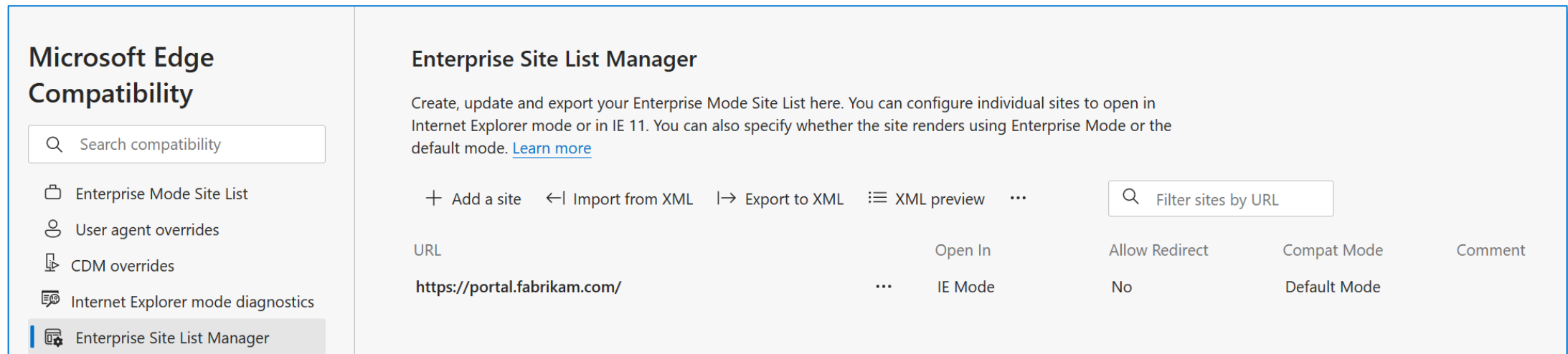
To configure Edge policies, you may need to download the applicable local ADMX templates, or find them in your Endpoint Manager templates

- 1 Configure the Enterprise Mode Site List**  
Specify the file name and location of site list
- 2 Configure Internet Explorer integration**  
Configure if IE mode or standalone IE 11 is to be used for legacy sites
- 3 Allow unconfigured sites to be reloaded in Internet Explorer mode**  
Enable the ability to reload a site in IE mode from the "Settings and more" menu, by right-clicking a tab, or by right-clicking a link.
- 4 Allow access to the Enterprise Mode Site List Manager Tool**  
Enable the in-browser tool for site list management
  - The standalone app is no longer being updated



## Configuring the IE mode site list

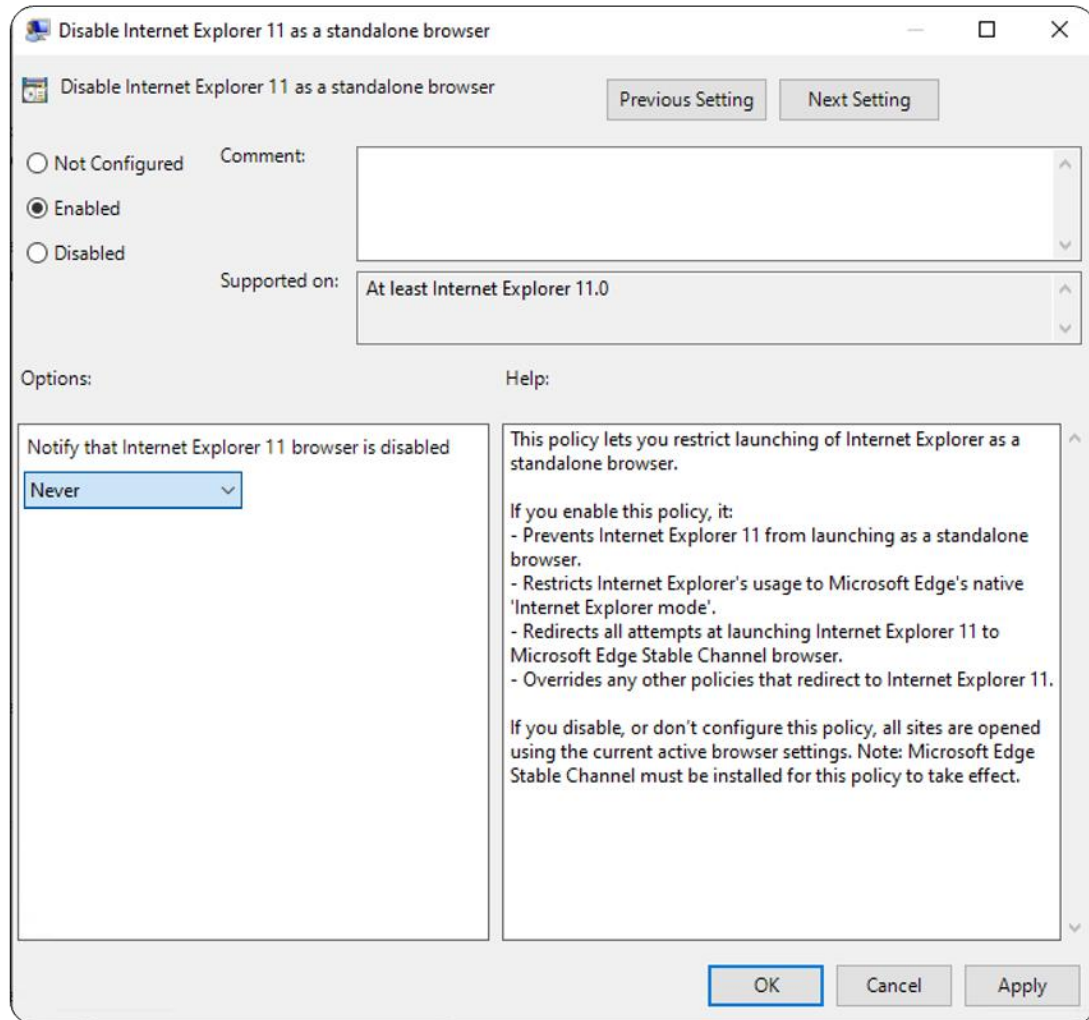
Once sites have been tested to be working with IE mode, they should be added to the IE mode site list for seamless switching when accessed by users



The screenshot shows the Microsoft Edge Enterprise Site List Manager interface. On the left is a navigation sidebar for Microsoft Edge Compatibility, with the Enterprise Site List Manager selected. The main area displays the Enterprise Site List Manager, which includes a search bar, action buttons (Add a site, Import from XML, Export to XML, XML preview), and a table of site configurations.

URL	Open In	Allow Redirect	Compat Mode	Comment
https://portal.fabrikam.com/	IE Mode	No	Default Mode	

## Disable IE as a standalone browser



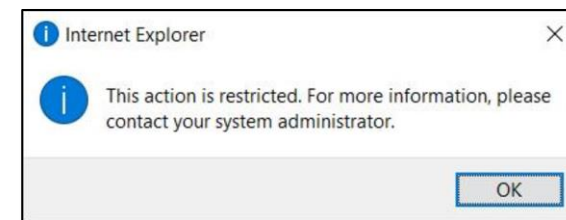
Policy enables IT Admins to disable IE11 *without* affecting IE mode

### Configure end user notification of IE standalone disabled:

**Never** if you don't want to notify users that IE11 is disabled

**Always** if you want to notify users every time they're redirected from IE11

**Once per user** if you want to notify users only the first time they are redirected



The Dual Engine Advantage – Trident and Chromium

**Microsoft Edge + IE mode is your stepping stone to modernization.**

Start here:

[aka.ms/IEmodeGuide](https://aka.ms/IEmodeGuide)

Take action in M365 Admin Center:

[aka.ms/EdgeAdvisor](https://aka.ms/EdgeAdvisor)

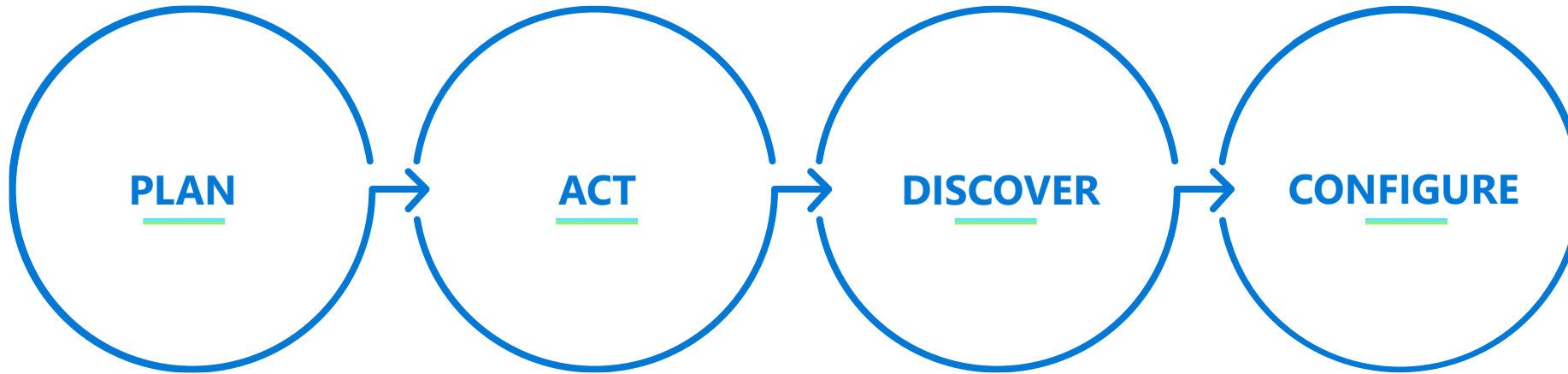
For compatibility assistance:

[aka.ms/AppAssure](https://aka.ms/AppAssure)



Start now to avoid late surprises!

## Next steps on your journey to Microsoft Edge



Plan for your Edge deployment and IE mode config with this guide [aka.ms/IEModeGuide](https://aka.ms/IEModeGuide)

Use Edge Advisor, a self-service tool to set up Edge and IE mode [aka.ms/EdgeAdvisor](https://aka.ms/EdgeAdvisor)

Find sites that require IE mode with Site Discovery [aka.ms/configureIEmode](https://aka.ms/configureIEmode)

(This step is included in Edge Advisor.)

Need additional assistance? [aka.ms/FastTrack](https://aka.ms/FastTrack)  
For compatibility questions: [aka.ms/AppAssure](https://aka.ms/AppAssure)

**Schedule yourself now.**

Block 30 minutes on the upcoming Monday to kick off site discovery.

Answer ten questions (or less), run a script, and deploy the package.

[aka.ms/configureIEmode](https://aka.ms/configureIEmode)



Thanks for joining us!

