

**Oracle® Hospitality OPERA Property
Management**
Workstation Setup Guide Release 5.6.x
F18436-05

November 2022

Copyright © 1987, 2022, Oracle and/or its affiliates. All rights reserved.

This software and related documentation are provided under a license agreement containing restrictions on use and disclosure and are protected by intellectual property laws. Except as expressly permitted in your license agreement or allowed by law, you may not use, copy, reproduce, translate, broadcast, modify, license, transmit, distribute, exhibit, perform, publish, or display any part, in any form, or by any means. Reverse engineering, disassembly, or decompilation of this software, unless required by law for interoperability, is prohibited.

The information contained herein is subject to change without notice and is not warranted to be error-free. If you find any errors, please report them to us in writing.

If this software or related documentation is delivered to the U.S. Government or anyone licensing it on behalf of the U.S. Government, then the following notice is applicable:

U.S. GOVERNMENT END USERS: Oracle programs, including any operating system, integrated software, any programs installed on the hardware, and/or documentation, delivered to U.S. Government end users are "commercial computer software" pursuant to the applicable Federal Acquisition Regulation and agency-specific supplemental regulations. As such, use, duplication, disclosure, modification, and adaptation of the programs, including any operating system, integrated software, any programs installed on the hardware, and/or documentation, shall be subject to license terms and license restrictions applicable to the programs. No other rights are granted to the U.S. Government.

This software or hardware is developed for general use in a variety of information management applications. It is not developed or intended for use in any inherently dangerous applications, including applications that may create a risk of personal injury. If you use this software or hardware in dangerous applications, then you shall be responsible to take all appropriate fail-safe, backup, redundancy, and other measures to ensure its safe use. Oracle Corporation and its affiliates disclaim any liability for any damages caused by use of this software or hardware in dangerous applications.

Oracle and Java are registered trademarks of Oracle and/or its affiliates. Other names may be trademarks of their respective owners.

Intel and Intel Xeon are trademarks or registered trademarks of Intel Corporation. All SPARC trademarks are used under license and are trademarks or registered trademarks of SPARC International, Inc. AMD, Opteron, the AMD logo, and the AMD Opteron logo are trademarks or registered trademarks of Advanced Micro Devices. UNIX is a registered trademark of The Open Group.

This software or hardware and documentation may provide access to or information about content, products, and services from third parties. Oracle Corporation and its affiliates are not responsible for and expressly disclaim all warranties of any kind with respect to third-party content, products, and services unless otherwise set forth in an applicable agreement between you and Oracle. Oracle Corporation and its affiliates will not be responsible for any loss, costs, or damages incurred due to your access to or use of third-party content, products, or services, except as set forth in an applicable agreement between you and Oracle.

Contents

Preface	4
Customer Support.....	4
Documentation.....	4
Revision History.....	4
1 Workstation Operating System Requirement	1
2 Workstation Setup Utility	2
3 Installing the Java Runtime Client	3
Clearing the Java Runtime Client Cache.....	6
4 Setting Microsoft Edge with IE 11 Compatibility Manually	9
Prerequisites	9
How to verify your Microsoft Windows operating system version.....	9
Microsoft Edge Chromium.....	12
Microsoft Edge Administrative Template	14
Enterprise Mode Site List Manager	20
Configurations.....	23
Popup Blocker setting for Reports Preview	35
5 Setting Adobe Acrobat Reader Preferences	38
6 Installing Client Side Applications	39
Installing Oracle Business Intelligence Publisher.....	39
7 Un-Installing Client Side Applications (Optional)	40
Un-Installing Opera JinitCheck Control	40
Un-Installing Opera Register Terminal.....	42
Un-Installing Oracle JInitiator XXXX	44

Preface

This document describes how to setup a workstation for Oracle Hospitality OPERA Property Management Version 5.6 and higher.

Customer Support

To contact Oracle Customer Support, access My Oracle Support at the following URL:

<https://support.oracle.com>

When contacting Customer Support, please provide the following:

Product version and program/module name

Functional and technical description of the problem (include business impact)

Detailed step-by-step instructions to re-create

Exact error message received and any associated log files

Screen shots of each step you take

Documentation

Oracle Hospitality product documentation is available on the Oracle Help Center at

<http://docs.oracle.com/en/industries/hospitality/>

Revision History

Date	Description of Change
June, 2016	<ul style="list-style-type: none">Initial publication.
July, 2016	<ul style="list-style-type: none">Minor updates.
July, 2018	<ul style="list-style-type: none">Updates to reflect current version information.
April, 2019	<ul style="list-style-type: none">Updates to reflect 5.6.5.
April 2022	<ul style="list-style-type: none">Removed support for 5.5
May 2022	<ul style="list-style-type: none">Updated compatibility
November 2022	<ul style="list-style-type: none">Revised OS compatibility

1 Workstation Operating System Requirement

To find the operating system requirements for Oracle Hospitality OPERA Property Management Version 5.6 and higher, refer to the *OPERA Property Management Client and Server Compatibility Matrix* document on the Oracle Help Center at https://docs.oracle.com/cd/E98457_01/index.html

2 Workstation Setup Utility

The workstation setup utility is designed to simplify the configuration required to run OPERA 5 on Microsoft Edge with IE11 compatibility mode." Please see MOS article (Doc ID: 2869285.1) <https://support.oracle.com/epmos/faces/DocumentDisplay?id=2869285.1>

If you use the Workstation Setup Utility, skip over chapters 3 and 4.

3 Installing the Java Runtime Client

Note: If upgrading from 5.5.0.x to 5.6.x.x it is necessary to clear your Java cache. Please see the section on Clearing the Java Runtime Client Cache for instructions on how to do that.

1. To find the required JRE version (for example, JRE 7 or JRE 8), refer to the *OPERA Property Management Client and Server Compatibility Matrix* document on the Oracle Help Center at https://docs.oracle.com/cd/E98457_01/index.html

Note: While the latest update of a supported JRE is recommended, the specific versions of JRE used during QA of an OPERA patch can be found in the application release notes.

2. Log on to the workstation with a user account that has local administrator rights.
3. Download the required JRE version from one of these pages:

- <http://www.oracle.com/technetwork/java/javase/downloads/jre8-downloads-2133155.html>
- <http://www.oracle.com/technetwork/java/javase/archive-139210.html>

4. Next to **Windows x86 Offline**, click the link `jre-xxxx-windows-i586.exe` to begin the download.

Note: Only 32-bit versions of the JRE are supported with OPERA.

5. When asked if you want to run or save from `download.oracle.com`, click **Run**.
6. Click the **Java** icon on the taskbar.

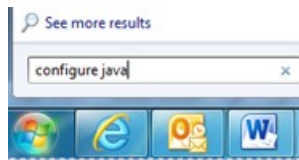


7. On the **Java Setup - Welcome** screen, click **Install**.

After the installation has completed, the **Java Setup - Uninstall out-of-date versions** screen appears.

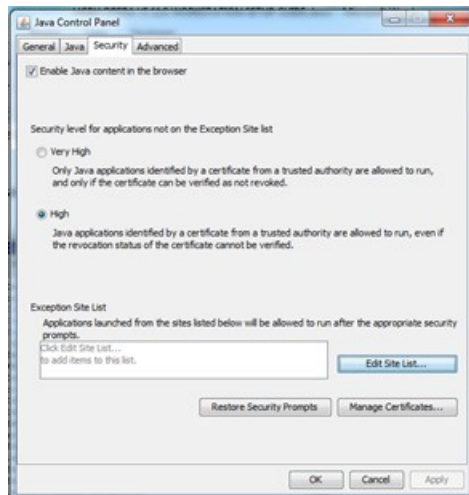


8. Click **Uninstall**.
9. Click the **Microsoft Windows Start** button.

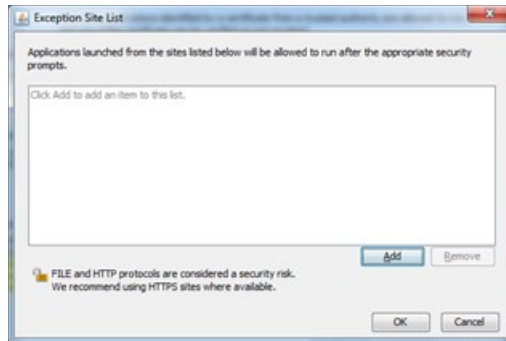


10. Click in the **Search programs and files** field, type **configure java** and then press **Enter**.

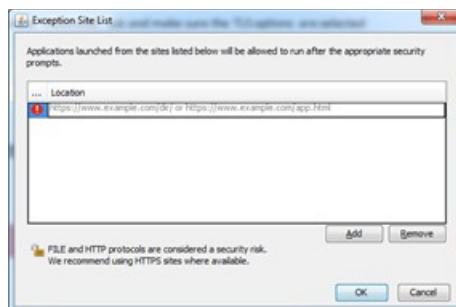
11. On the **Java Control Panel** screen, click the **Security** tab.



12. Click **Edit Site List...**



13. On the **Exception Site List** screen, click **Add**.



14. Click in the **Location** field, enter your OPERA application URL with http and then click **Add**.

For example, depending on your OPERA application version and hosted location, your URLs should look something like:

- `http://<yourOPERAURL>.microsd.c.us`

Or

- `http://<yourSSD>-prod-<yourENV>.hospitality.oracleindustry.com`

Note: Do not enter a URL that includes 'OAM', also do not include any paths beyond the hostname that ends in .com.

15. Click in the **Location** field, enter your OPERA application URL with https http and then click **Add**.

For example, depending on your OPERA application version and hosted location, your URLs should look something like:

- `https://<yourOPERAURL>.microsd.c.us`

Or

- `https://<yourSSD>-prod-<yourENV>.hospitality.oracleindustry.com`

Note: Do not enter a URL that includes 'OAM', also do not include any paths beyond the hostname which ends in .com.

-
16. On the **Java Control Panel** screen, select the **Advanced** tab.
 17. Ensure that the **Use TLS 1.2** check box is checked. If not, select it.
Note: Older releases of OPERA 5 may also require SSLv3 or TLS1.0 to function.
 18. Click **Apply** and then click **OK**.
 19. Close **Microsoft Internet Explorer**, open it again, and log into OPERA.

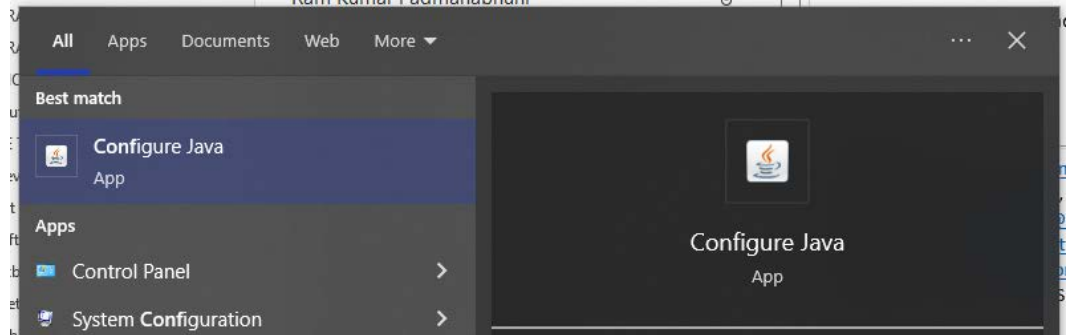
Clearing the Java Runtime Client Cache

When upgrading from 5.5.0.x to 5.6.x.x it is necessary to clear your Java cache after installing the new JRE version.

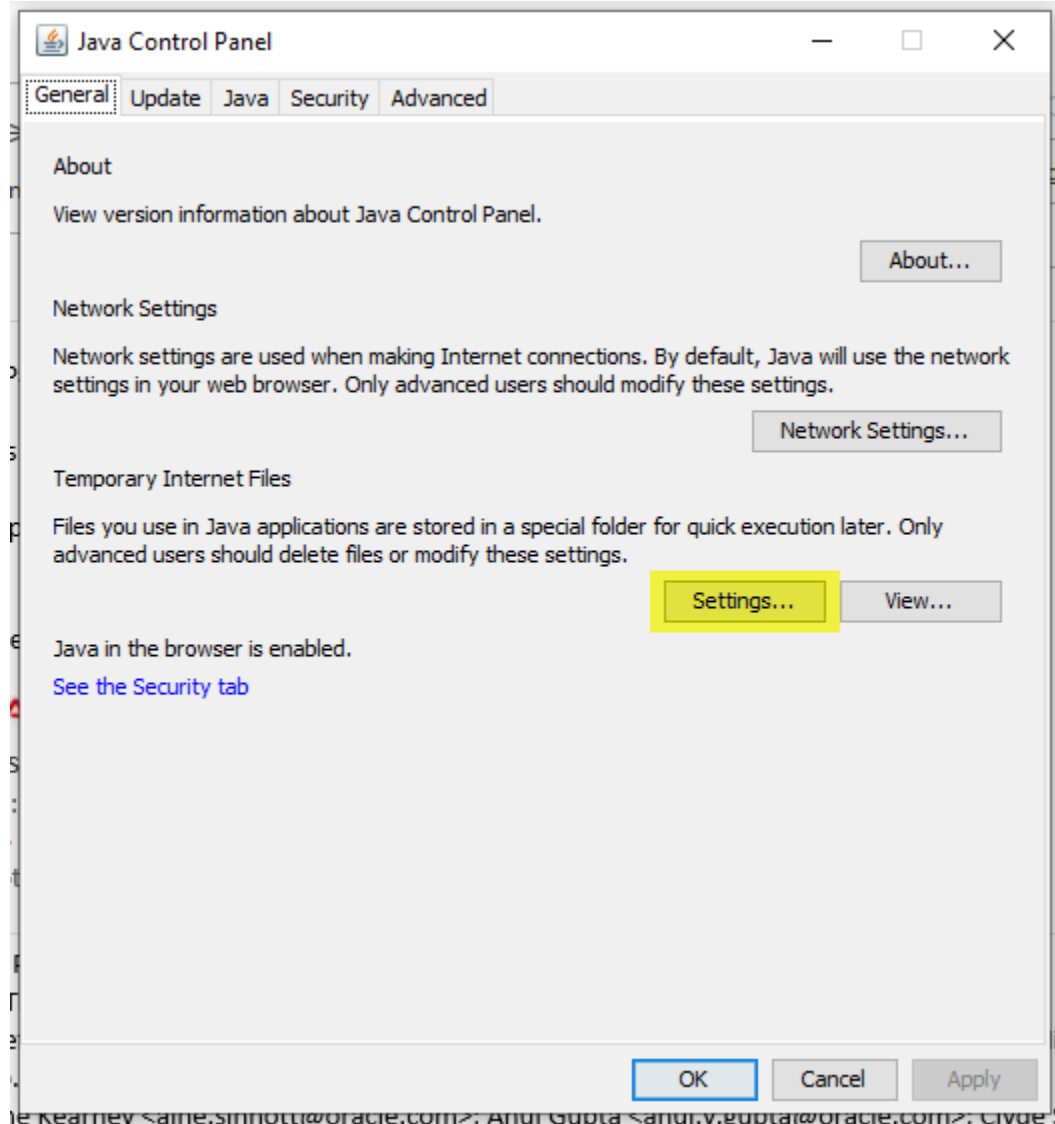
Java Cache Clearing is necessary when there is a larger version gap between the source version and the upgraded target version because we changed the Java Workstation Cache a few times since lower versions of 5.5.0.x.

Here is what to do:

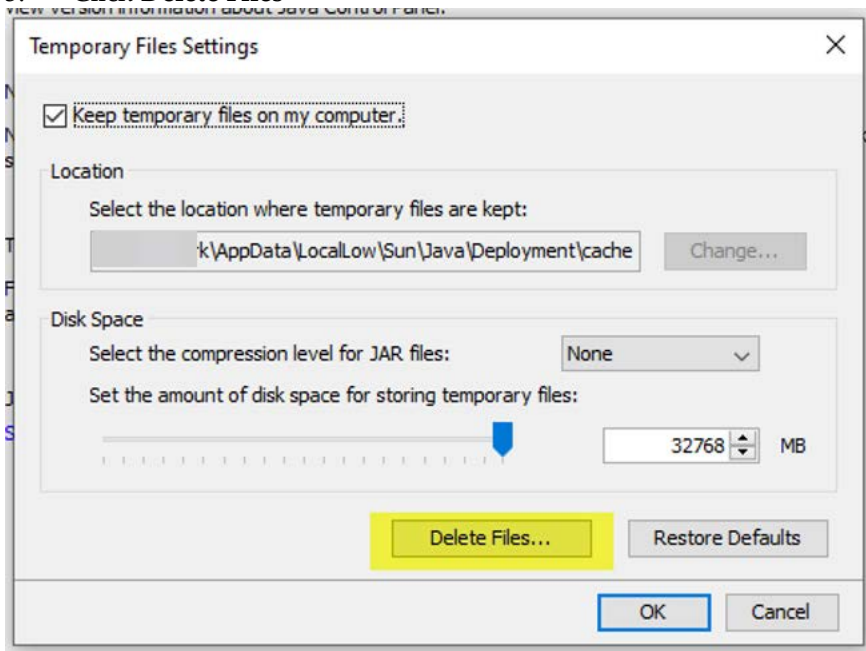
1. Search for and open **Configure Java**



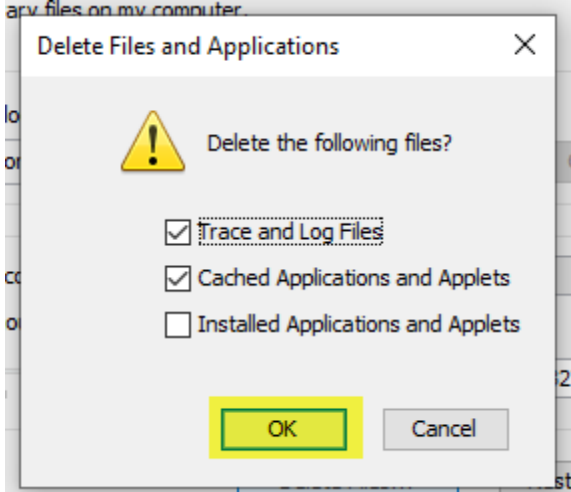
2. Under General click **Settings**



3. Click **Delete Files**



4. The options 'Trace and Logs Files' and 'Cached Applications and Applets' should already be ticked when you open this screen > Click **OK**



4 Setting Microsoft Edge with IE 11 Compatibility Manually

Oracle Hospitality OPERA 5 is compatible when Microsoft Edge (based on Chromium) is configured to use Internet Explorer (IE) 11 compatibility mode.

This following section explains the changes required to enable IE 11 Compatibility Mode in Microsoft Edge (based on Chromium).

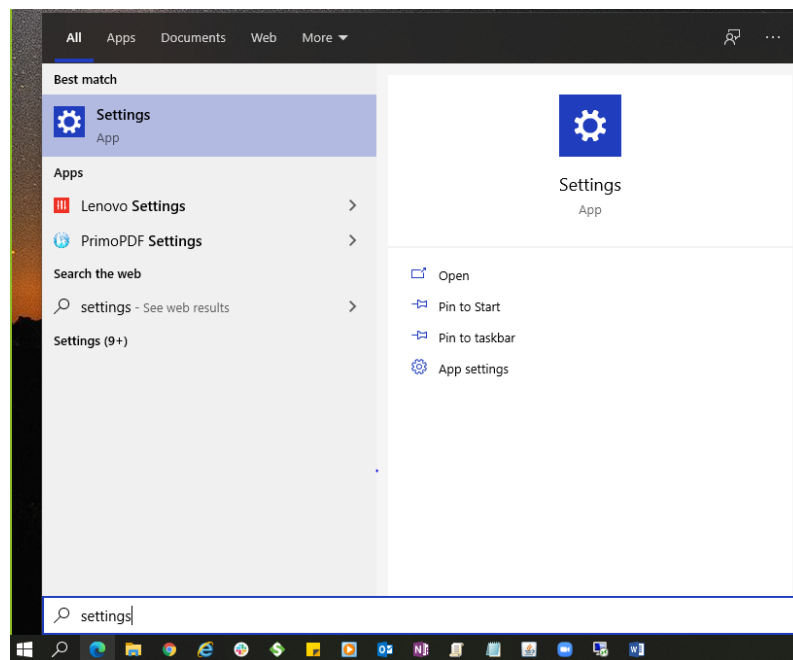
Note: OPERA 5 is not compatible with Google Chrome, Mozilla Firefox, and other browsers.

Prerequisites

The Windows version should match with one of the versions listed here:
<https://docs.microsoft.com/en-us/deployedge/edge-ie-mode>

How to verify your Microsoft Windows operating system version

1. Go to Windows > Settings



2. Click on System

Windows Settings

Find a setting

System
Display, sound, notifications, power

Devices
Bluetooth, printers, mouse

Phone
Link your Android, iPhone

Network & Internet
Wi-Fi, airplane mode, VPN

Personalization
Background, lock screen, colors

Apps
Uninstall, defaults, optional features

Accounts
Your accounts, email, sync, work, other people

Time & Language
Speech, region, date

3. Click on About and verify the Version under Windows Specifications

Settings

Home

Find a setting

System

- Display
- Sound
- Notifications & actions
- Focus assist
- Power & sleep
- Storage
- Tablet mode
- Multitasking
- Projecting to this PC
- Shared experiences
- Clipboard
- Remote Desktop
- About**

About

Your PC is monitored and protected.

- ✓ Virus & Threat Protection
- ✗ Firewall & Network Protection
- ✓ App & browser control
- ✓ Account protection
- ✓ Device security

[See details in Windows Security](#)

Device specifications

Device name	wfvwm05395
Processor	Intel Core Processor (Haswell, no TSX) 2.19 GHz (2 processors)
Installed RAM	16.0 GB
Device ID	7D6ACC23-42C5-4482-AF39-331D23E6ADB4
Product ID	00329-00000-00003-AA303
System type	64-bit operating system, x64-based processor
Pen and touch	Pen and touch support with 10 touch points

[Rename this PC](#)

Windows specifications

Edition	Windows 10 Enterprise
Version	1903
Installed on	9/28/2020
OS build	18362.1139

[Change product key or upgrade your edition of Windows](#)

Related settings

- [BitLocker settings](#)
- [System info](#)

Have a question?

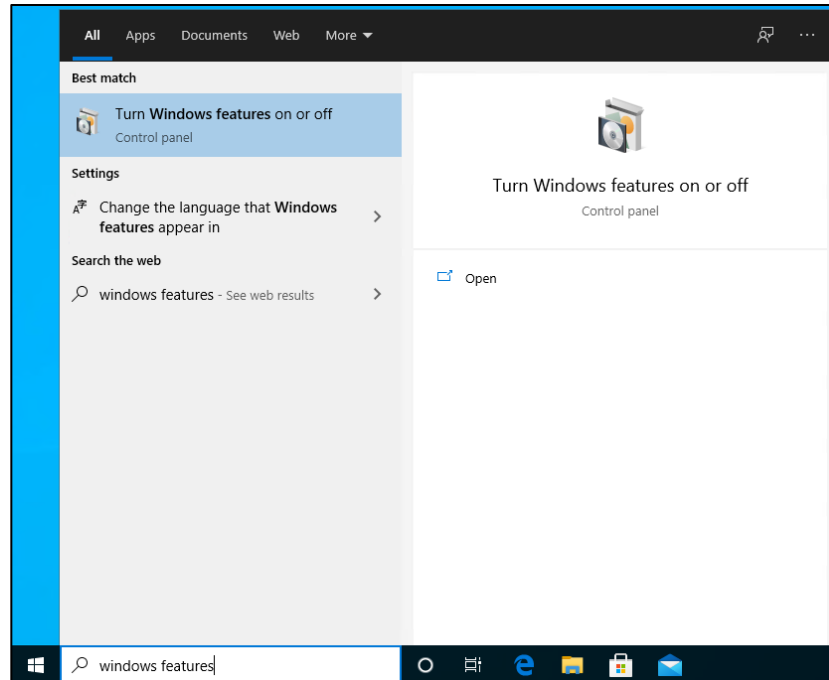
- [Finding out how many cores my processor has](#)

[Get help](#)

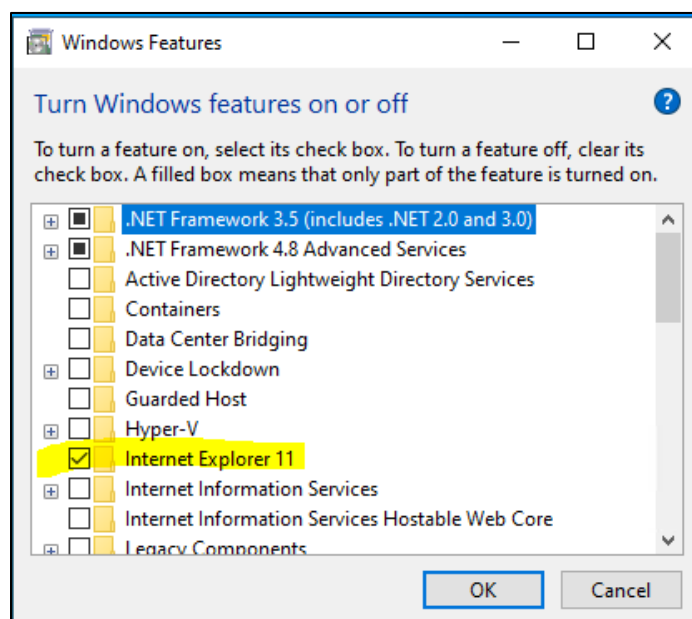
[Give feedback](#)

Enable Internet Explorer 11 in Windows Features

1. Go to Windows > Turn **Windows features** on or off



2. On the **Windows Features** popup screen, ensure that **Internet Explorer 11** checkbox is checked

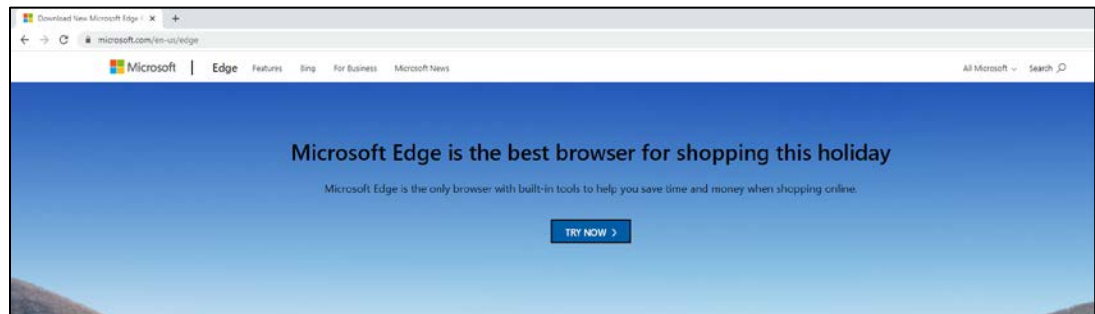


Microsoft Edge Chromium

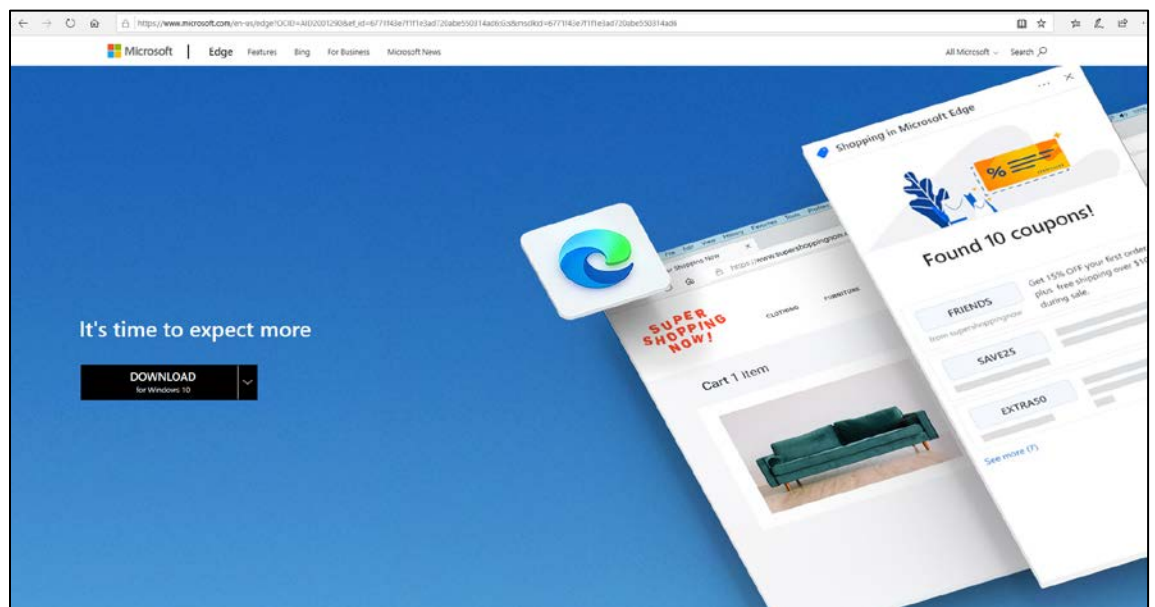
Download and Install Microsoft Edge Chromium

1. Click on the following URL to download Microsoft Edge

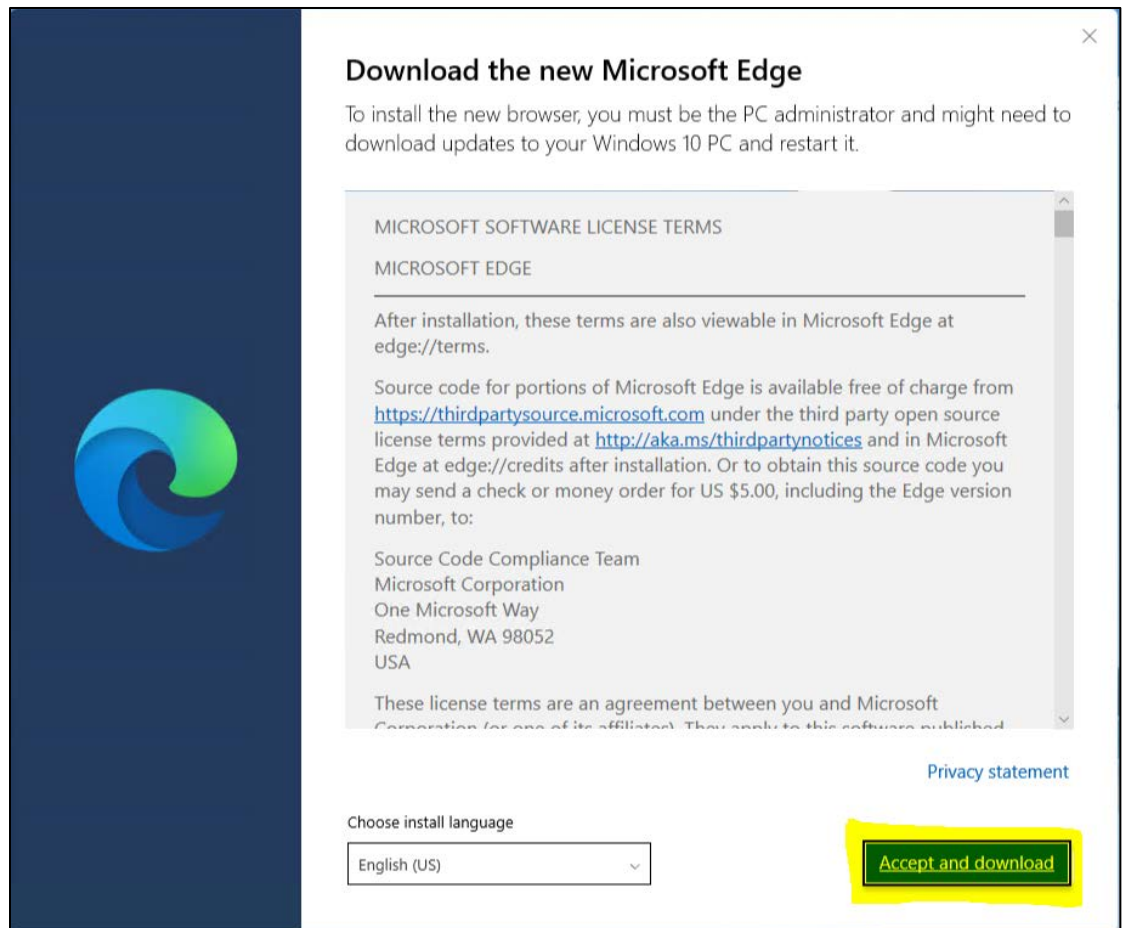
<https://www.microsoft.com/en-us/edge>



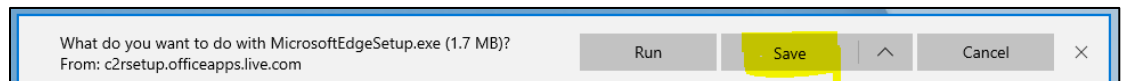
Click on "Try Now"



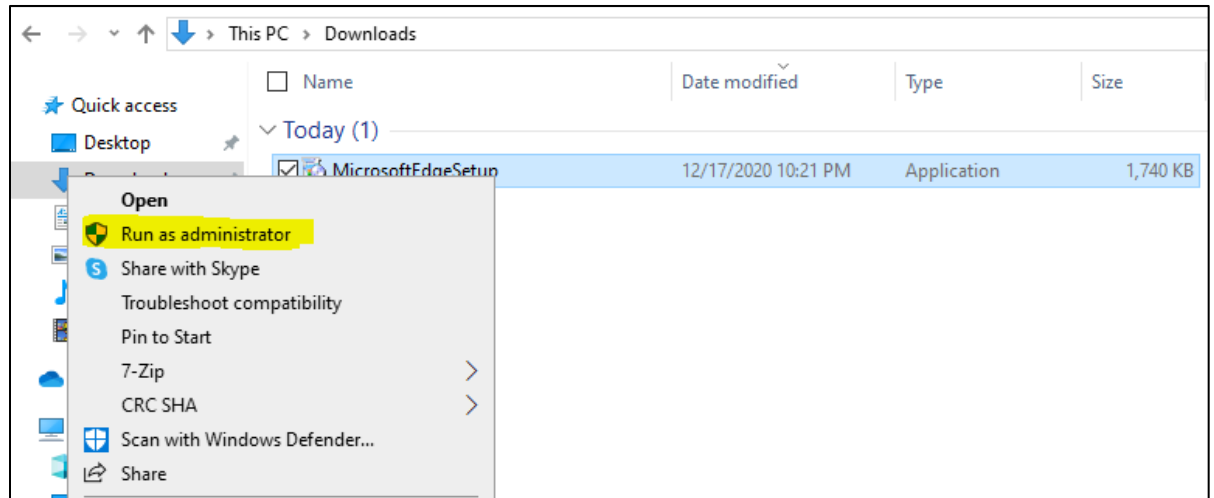
2. Select **DOWNLOAD for Windows 10** (Choose based on your machine Operating System),
Popup window "Download the new Microsoft Edge" is displayed. Click on **Accept and Download**



3. Save the Setup file



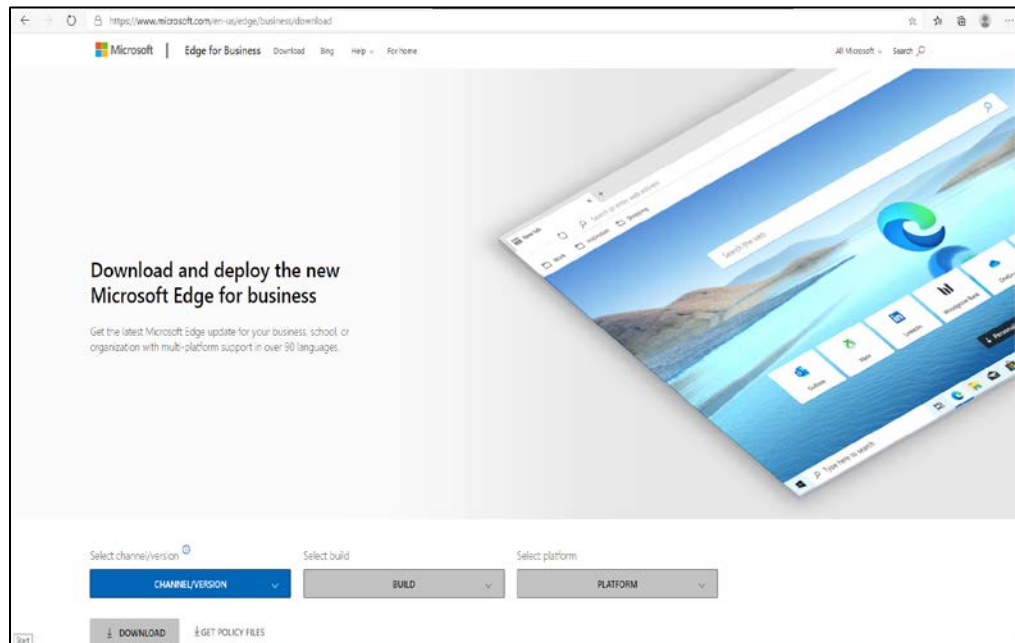
4. Navigate to the location where the Setup file is downloaded. Select the file and right click and then select Run as Administrator. Wait for the Setup to Complete



Microsoft Edge Administrative Template

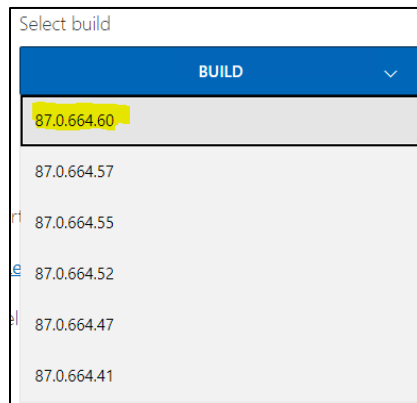
Download and Configure the Microsoft Edge Administrative template

1. Click on the following URL to download Microsoft Edge Administrative Template <https://www.microsoft.com/en-us/edge/business/download>

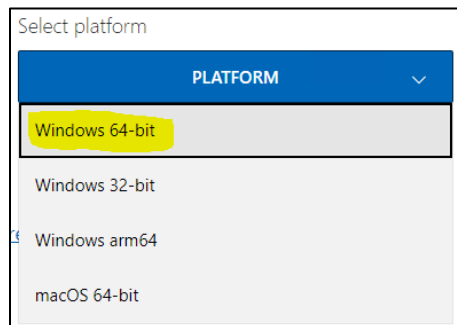


2. Select the below CHANNEL / VERSION :- Current and Supported

3. Build :- Latest (current latest 87.0.664.60)



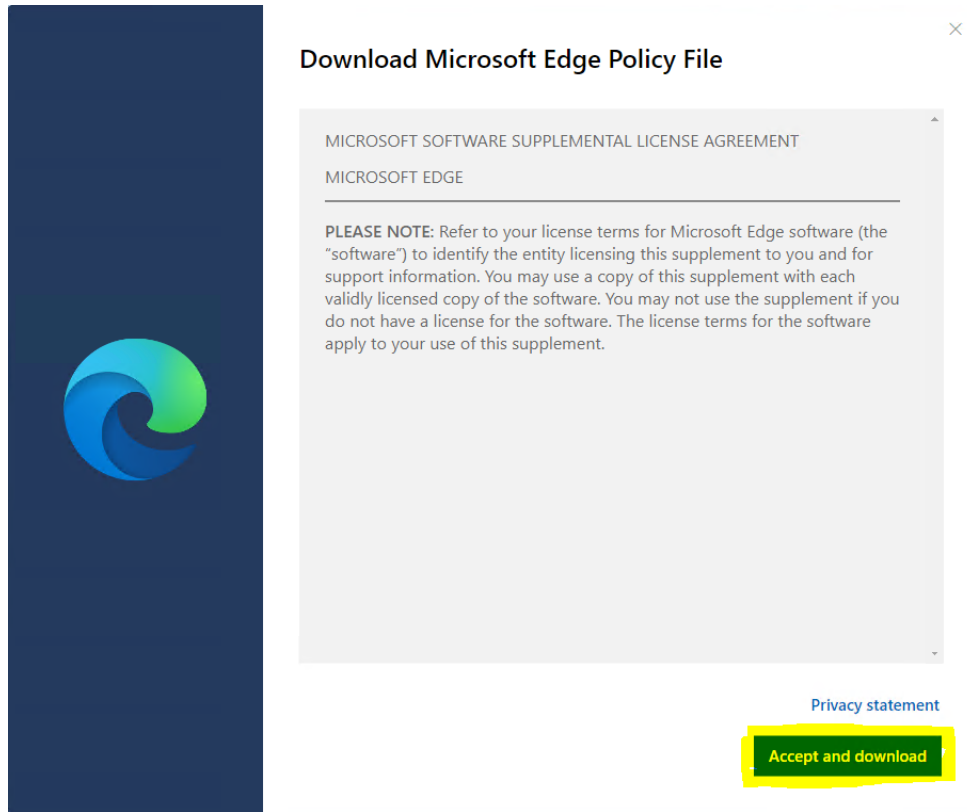
4. Platform :- Windows 64-bit



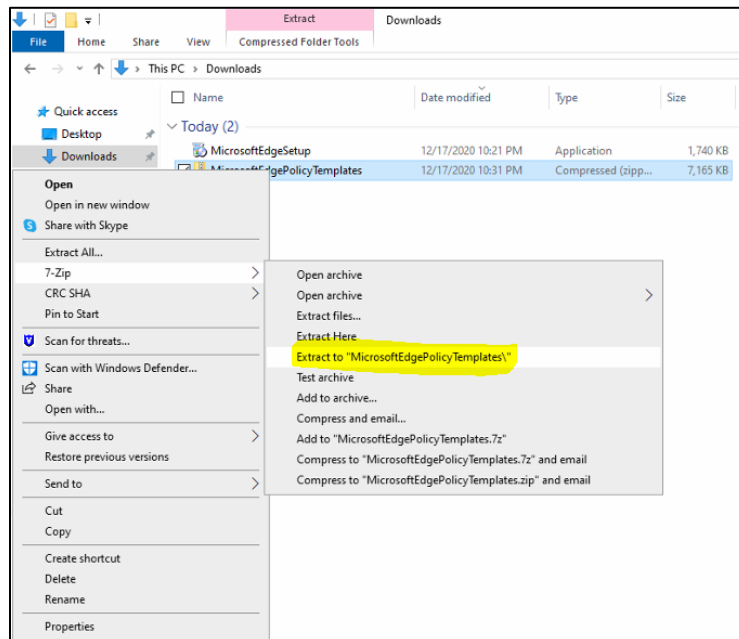
5. Select **GET POLICY FILES**, Download Microsoft Edge Policy File popup window is display



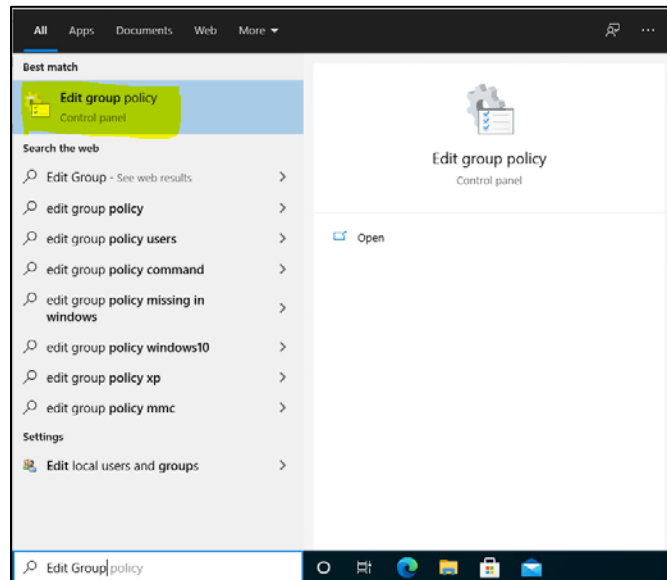
6. Click on Accept and Download



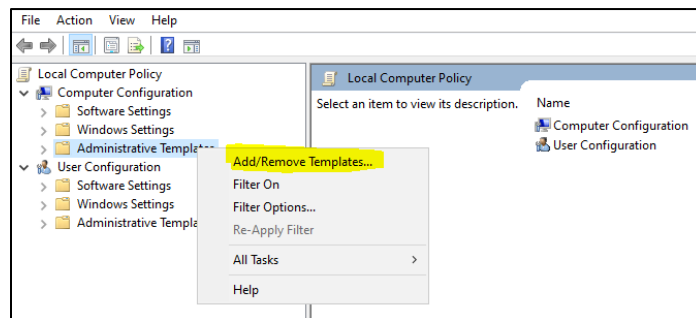
7. Navigate to the download location and extract the Zip file (**MicrosoftEdgePolicyTemplates.zip**)



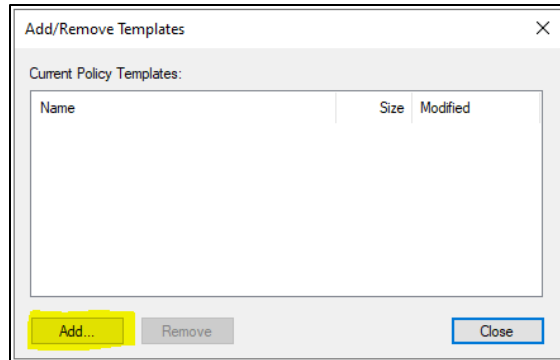
8. Once the file is extracted to local drive, Go to Windows and launch “Edit Group Policy”.



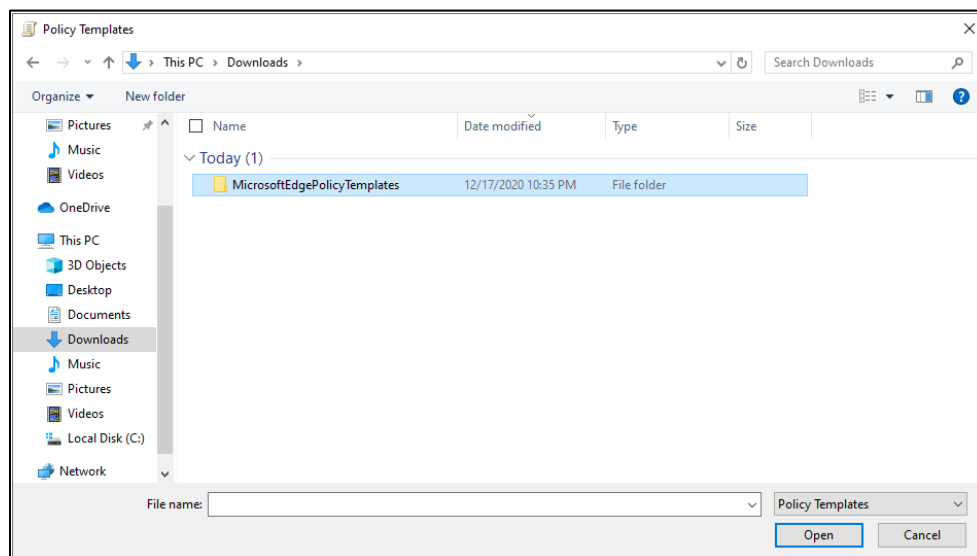
9. On Local Group Policy Editor Window, Navigate to Local Computer Policy > Computer Configuration. Select and do a Right Click on Administrative Templates, and then Select “Add / Remove Templates...”



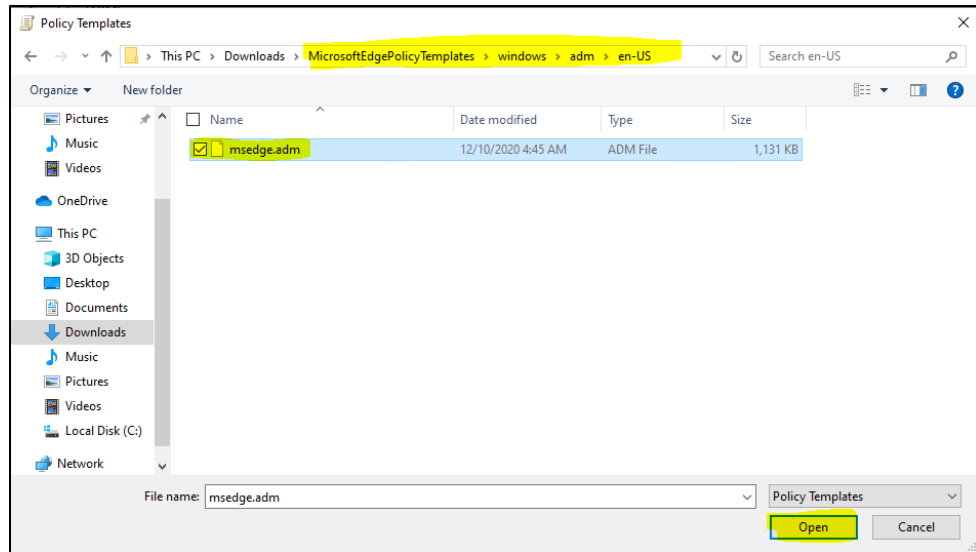
10. On the **Add/Remove Templates** popup window. Click on **Add** button.



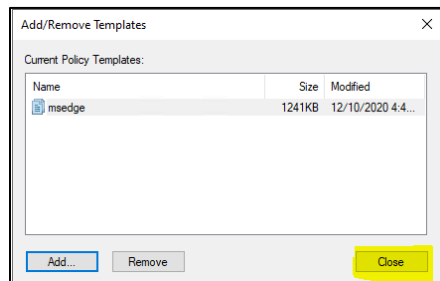
11. On the Policy Templates file selection popup window browse to the location where **MicrosoftEdgePolicyTemplates** zip file has been extracted



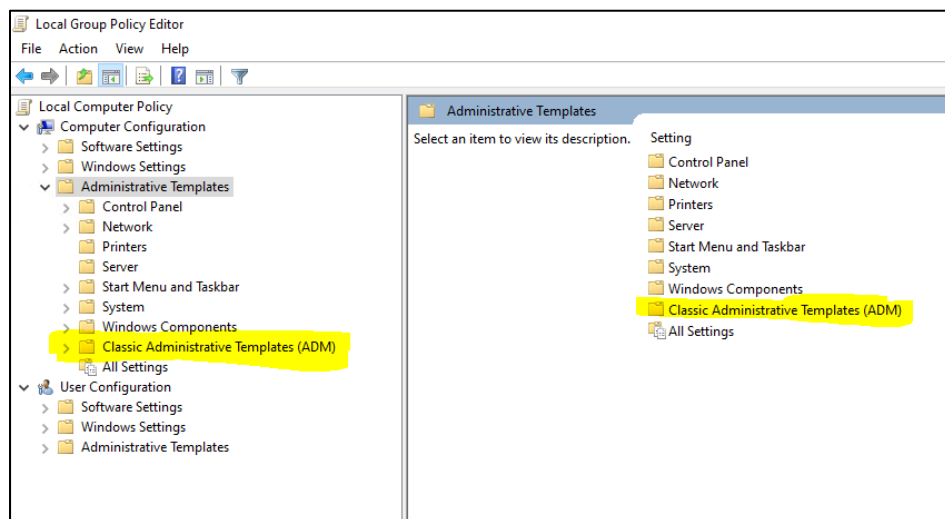
12. Under **MicrosoftEdgePolicyTemplates** folder browse to **windows > adm > en-US**, and then select the file "**msedge.adm**" file and click on **Open** button.
Note: select the appropriate folder under "adm" based on the language you want to setup.



13. Let the file get loaded and click on the Close button



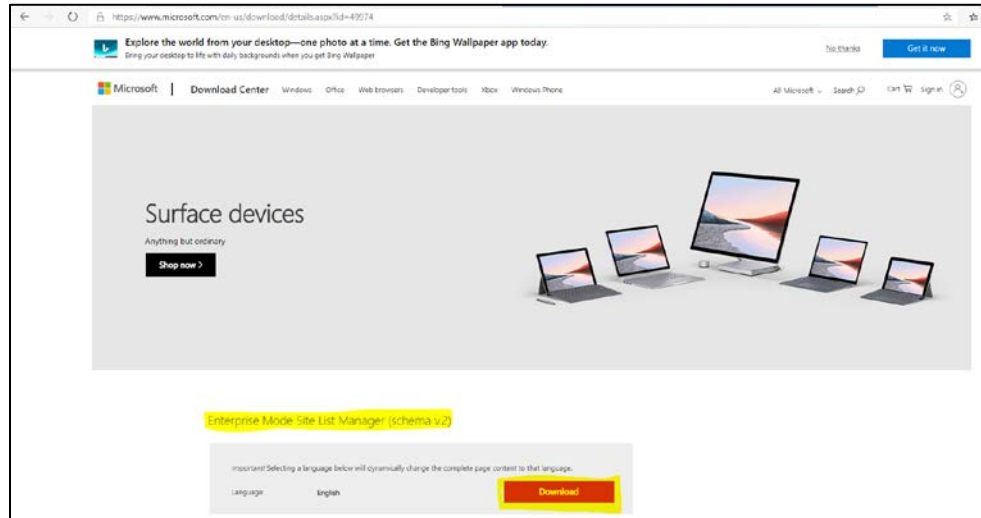
14. Expand Administrative Templates and verify that **Classic Administrative Templates (ADM)** is present.



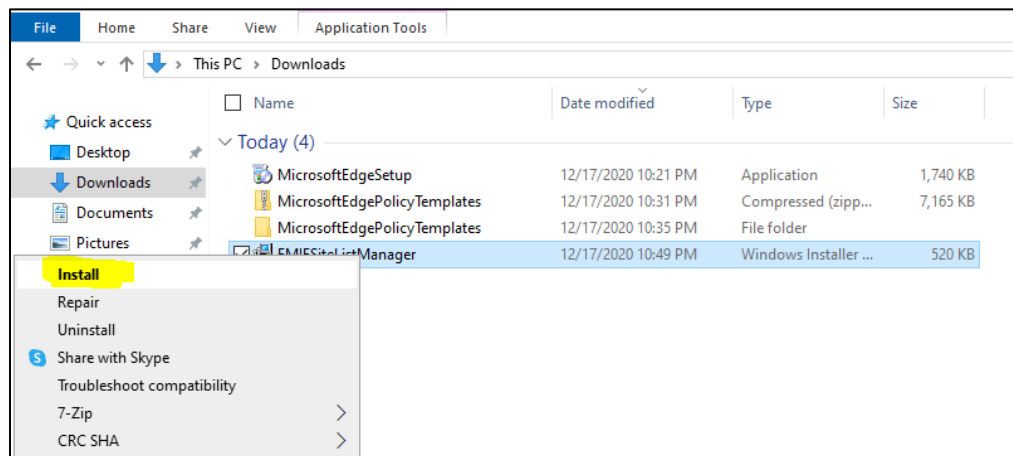
Enterprise Mode Site List Manager

Download and Install Enterprise Mode Site List Manager

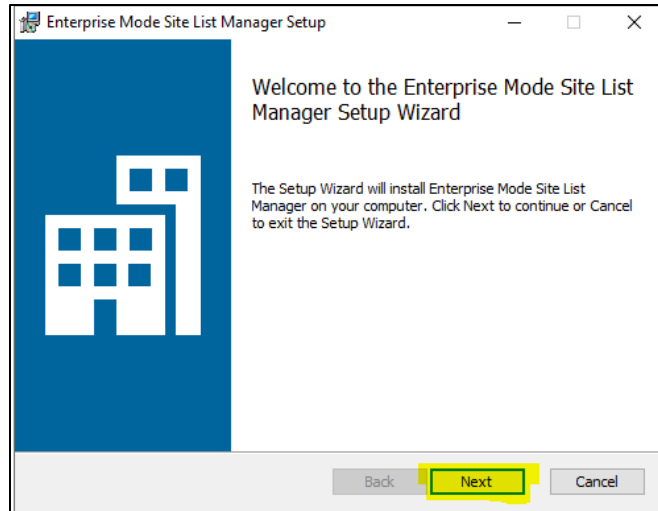
1. Click on the following URL to download Enterprise Mode Site List Manager
<https://www.microsoft.com/en-us/download/details.aspx?id=49974>
Download the Enterprise Mode Site List Manager (schema v.2)



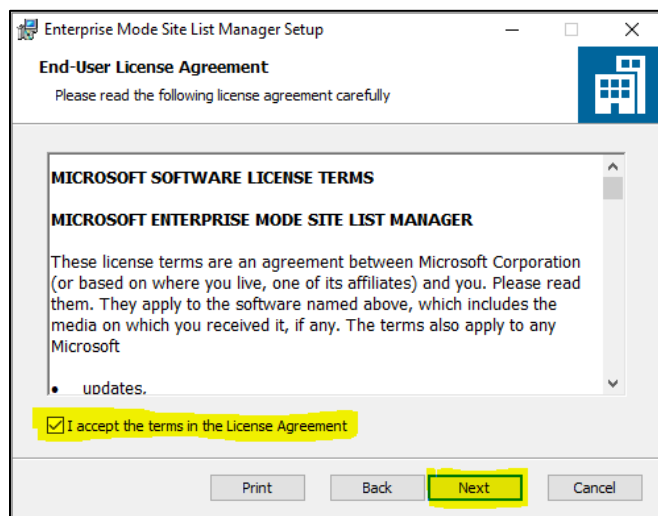
2. Navigate to the location where the .msi file has been downloaded. Install the **EMIESiteListManager.msi**, Enterprise Mode Site List Manger Setup window is displayed



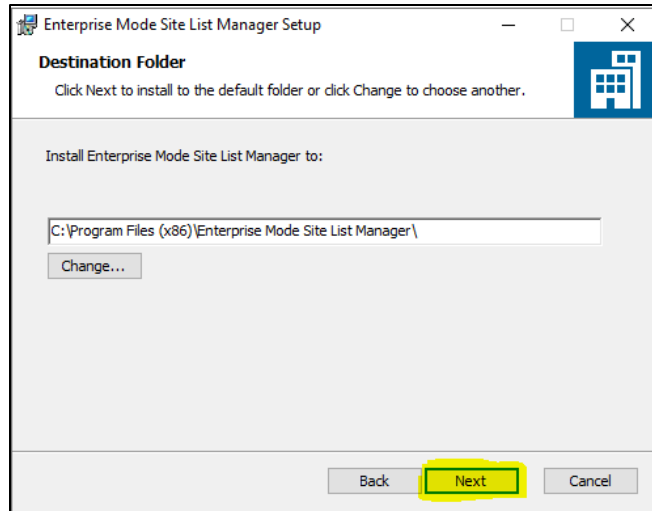
3. Click on **Next** button



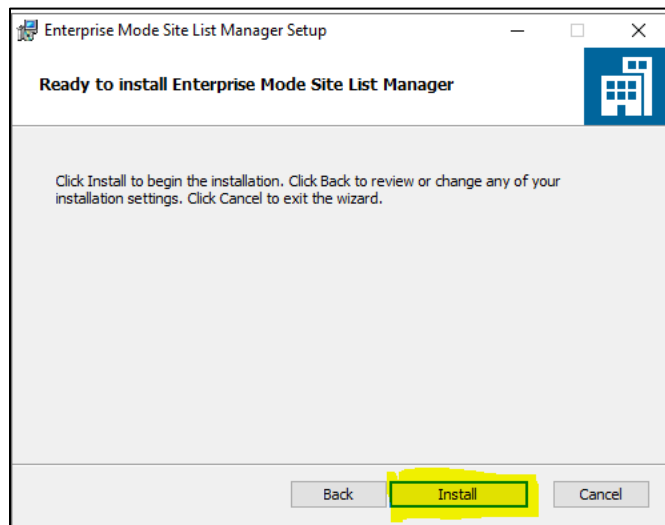
4. Select the **Checkbox** for **End-User License Agreement** and click on **Next** button



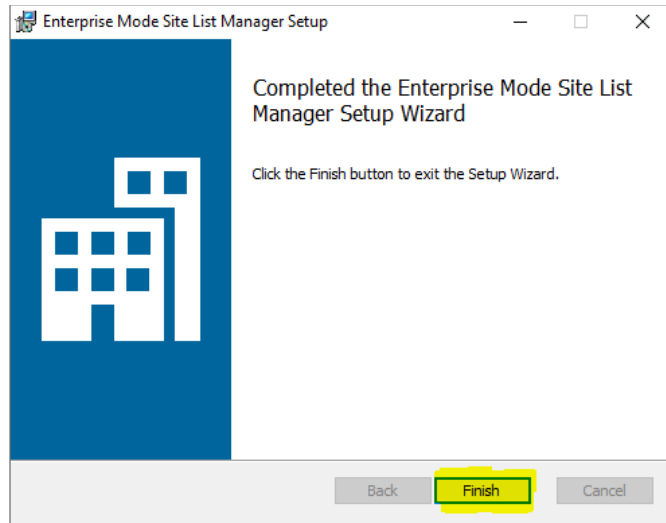
5. On the Destination Folder do not make any change and click in **Next** button



6. On the Ready to Install Enterprise Mode Site List Manager window click on the Install button



7. Click on Finish button



Configurations

This section will explain on how to add OPERA 5 Sites in Enterprise Mode Site List Manager and then configure the following settings in local Group Policy Editor.

Configure the Enterprise Mode Site List

Use the Enterprise Mode IE website list

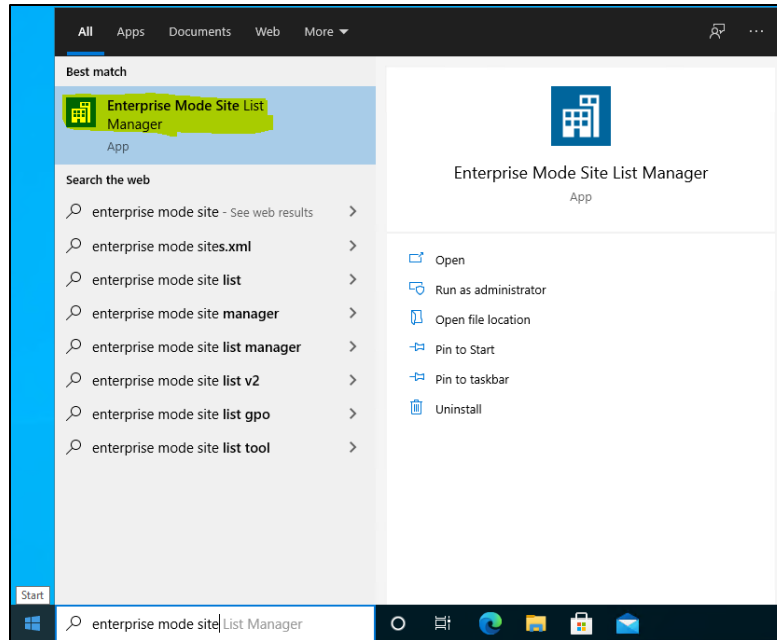
Configure the Enterprise Mode Site List

Allow Microsoft Compatibility List

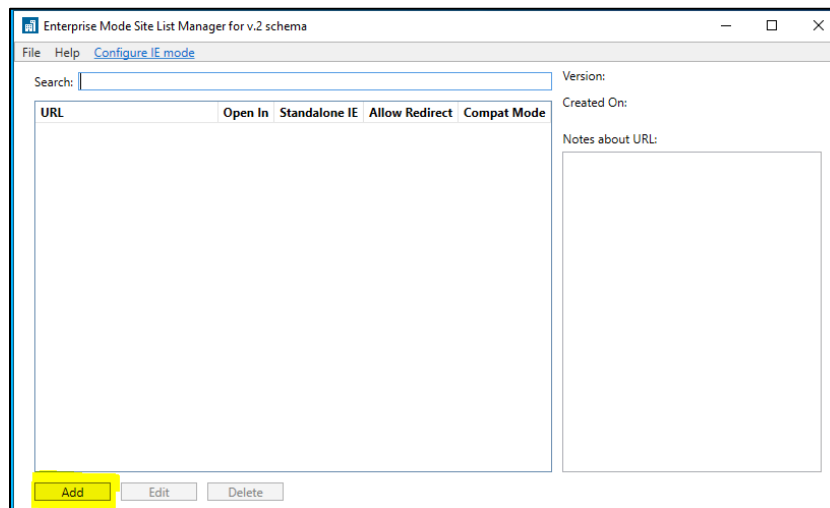
Send all Intranet sites to Internet Explorer 11

Once the sites are added and the above mentioned settings are configured, the sites can then be launched from Microsoft Edge Chromium browser.

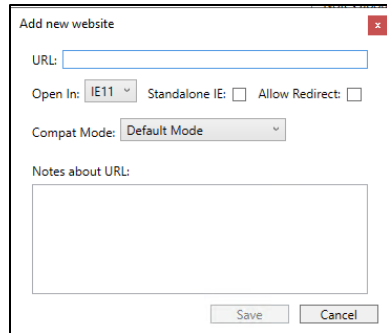
1. Navigate to Windows > Enterprise Mode Site List Manger



2. On the Enterprise Mode Site List Manger for v.2 schema popup window, click on the Add button



3. Add new Website window is displayed



4. Provide below details for the site to be used in Compatibility mode

URL

NOTE :- Make sure that no protocol is specified when adding the URL.

Using a URL like **contoso.com**, will automatically applies both <http://contoso.com> and <https://contoso.com>.

Open In :- IE11

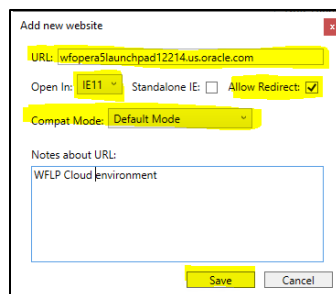
Standalone IE :- Unchecked

Allow Redirect :- Checked

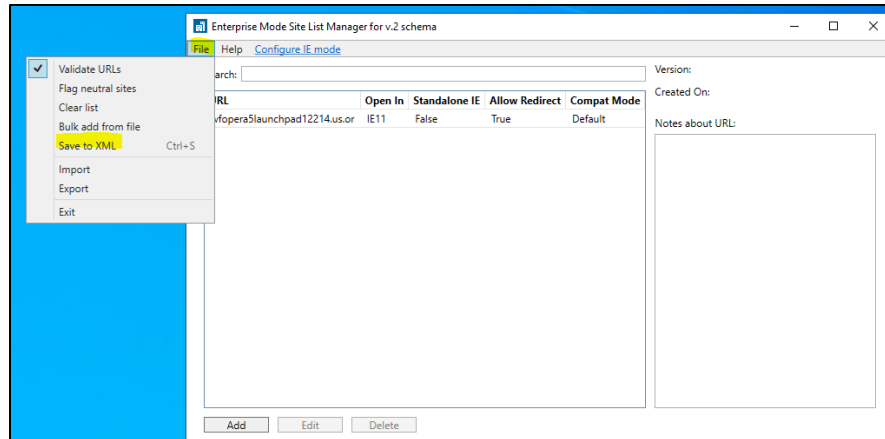
Compat Mode :- Default Mode

Notes about URL :- Provide some description for the URL (This step is optional)

Click on the **Save** button.



5. On the Enterprise Mode Site List Manger for v.2 schema popup window, navigate to **File > Save to XML**

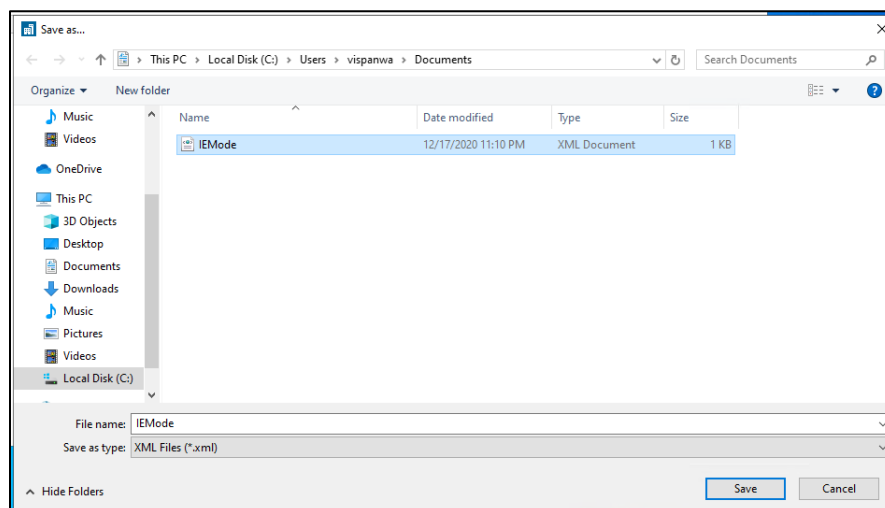


6. Navigate to a location where you want to save the Site List XML, and save the file.

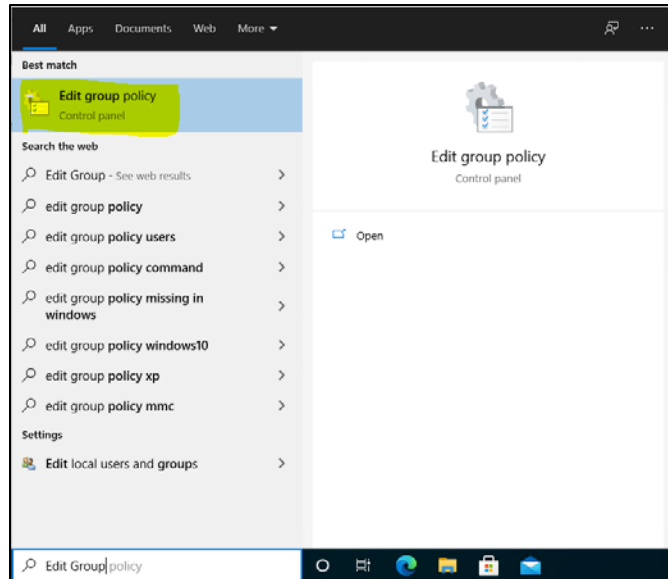
Note: This XML file is used in configure the settings in “Use the Enterprise Mode IE website list”.

So it is recommended you override the same existing saved XML file whenever you add new sites.

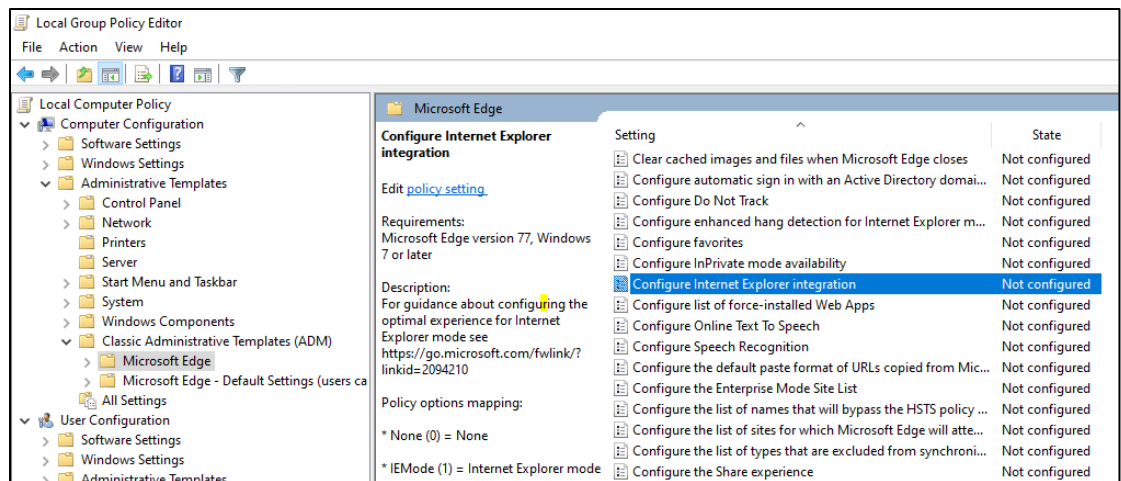
For Ex: if you save the file as “IEMode.xml”, next time when you add a new site, see that you choose the same file.



7. Now Edit the Group Policies, Go to Windows > Edit Group Policy



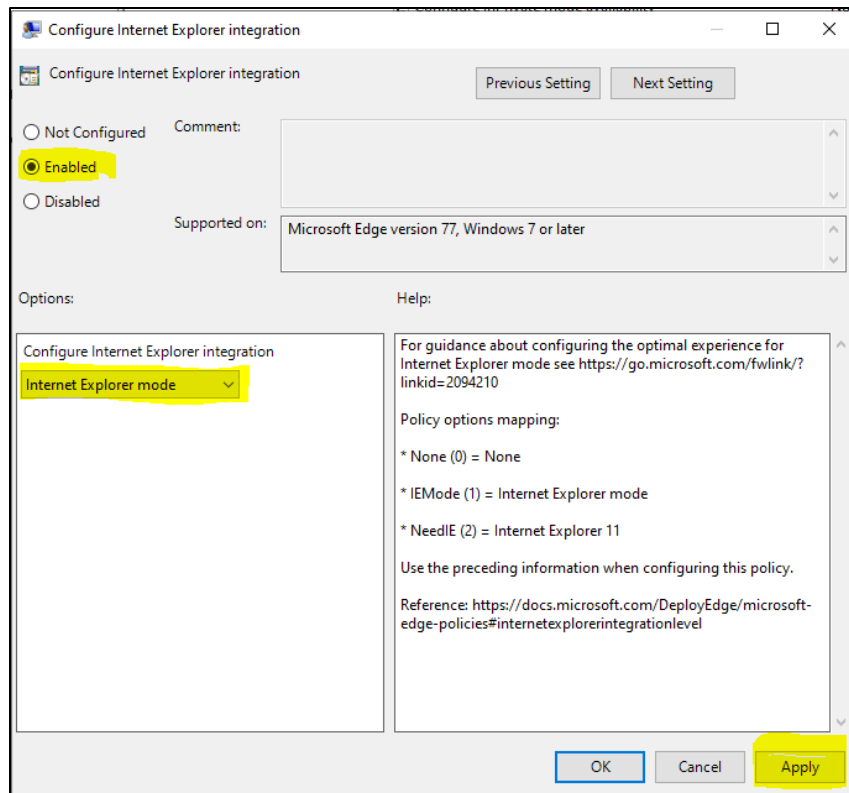
- 8 On Local Group Policy Editor window, navigate to Local Computer Policy > Computer Configuration > Administrative Templates > Classic Administrative Templates (ADM) > Microsoft Edge. Double click on **Configure Internet Explorer integration**



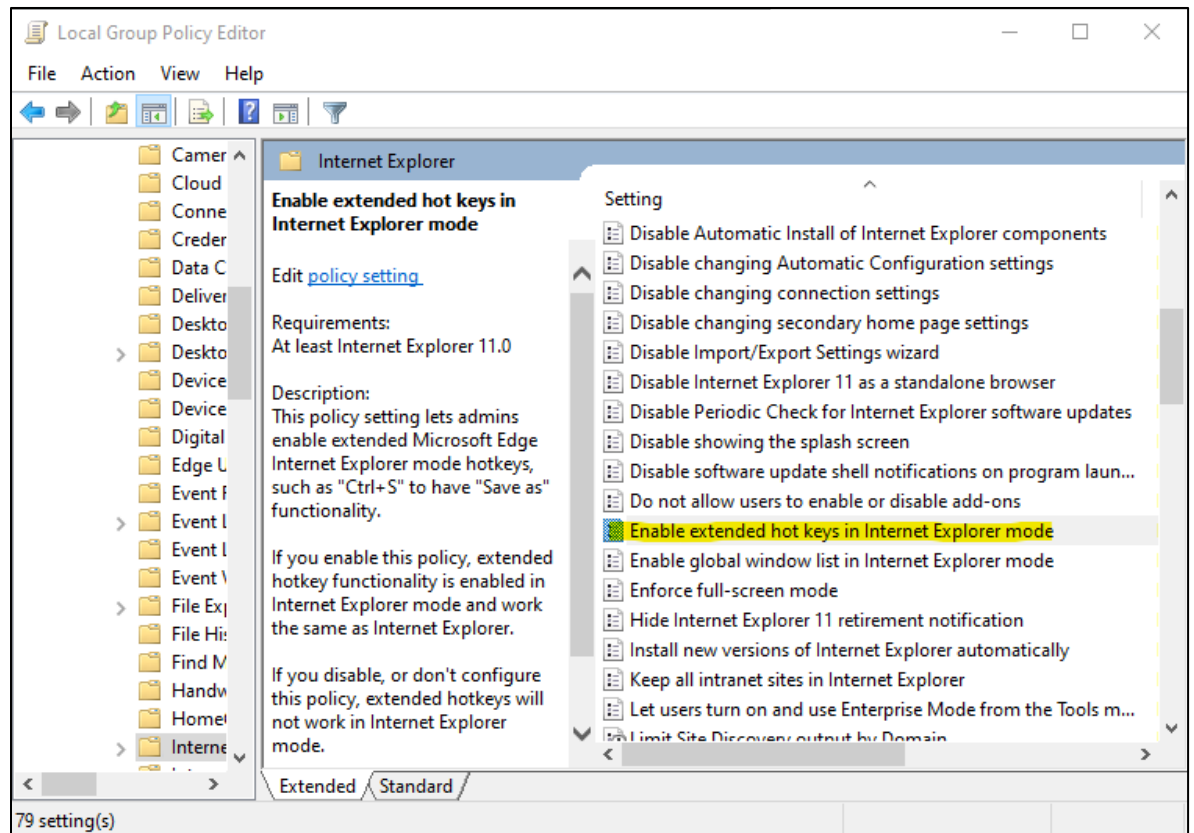
On the popup window set the below, And click on the **Apply** button and then click on **OK**

Check the Enabled radio button

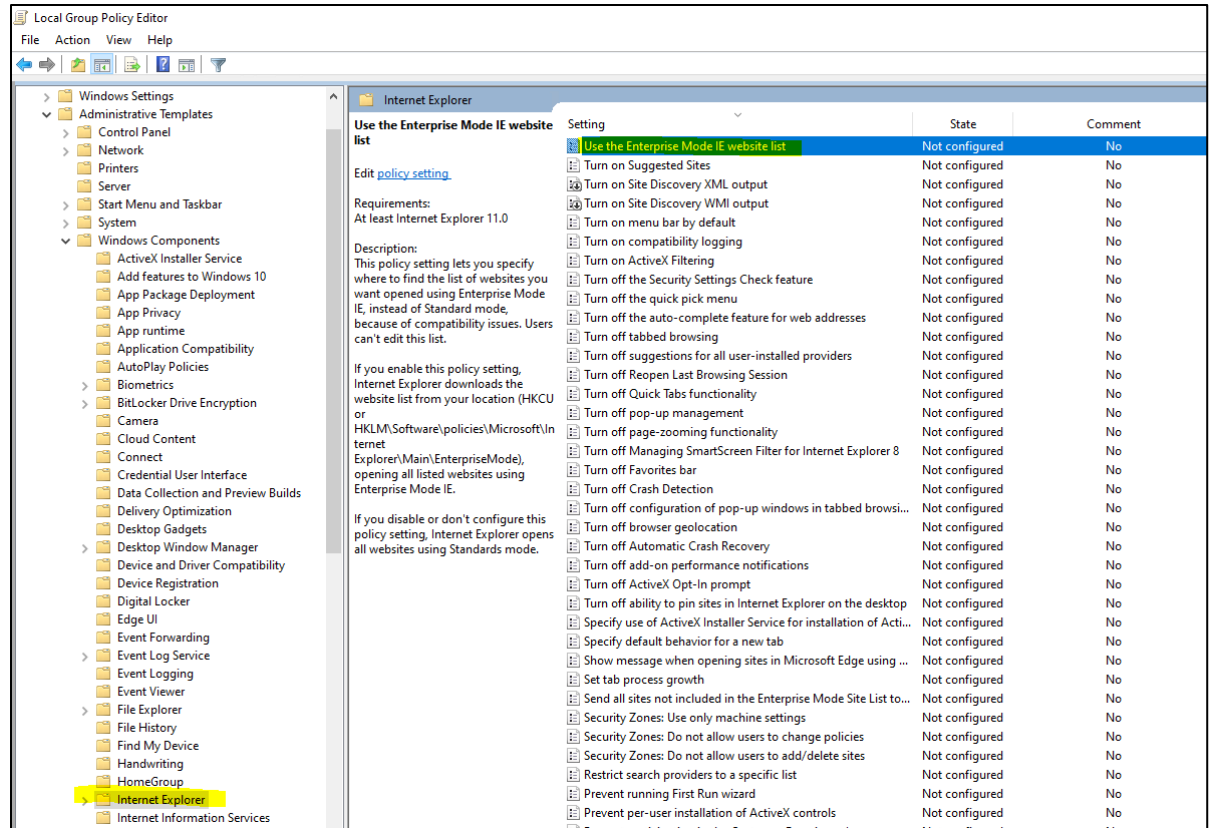
Under Configure Internet Explorer integration drop down select **Internet Explorer mode**



- 9 On Local Group Policy Editor window, navigate to Local Computer Policy > Computer Configuration > Administrative Templates > Windows Components > Internet Explorer
- 10 Double click on **Use the Enterprise Mode IE website list**



- - "OPTIONAL: Enable extended hot keys in Internet Explorer mode. By enabling this optional step, hot keys can be used. When a report is generated in a browser window using a format such as XML, pressing Ctrl + S causes the SAVE AS button to appear."

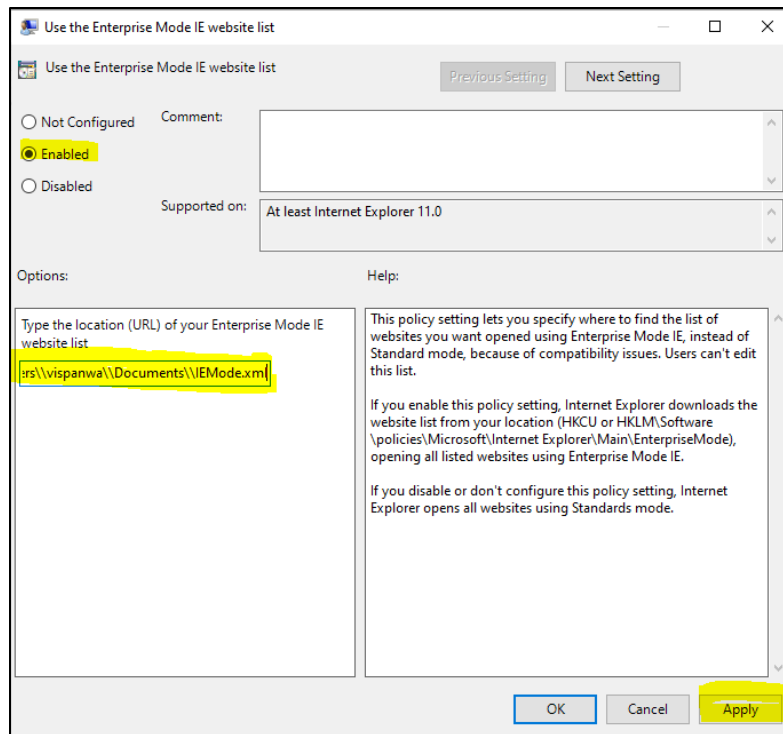


On the popup window set the below, and click on the **Apply** and **OK**.

Check the Enabled radio button

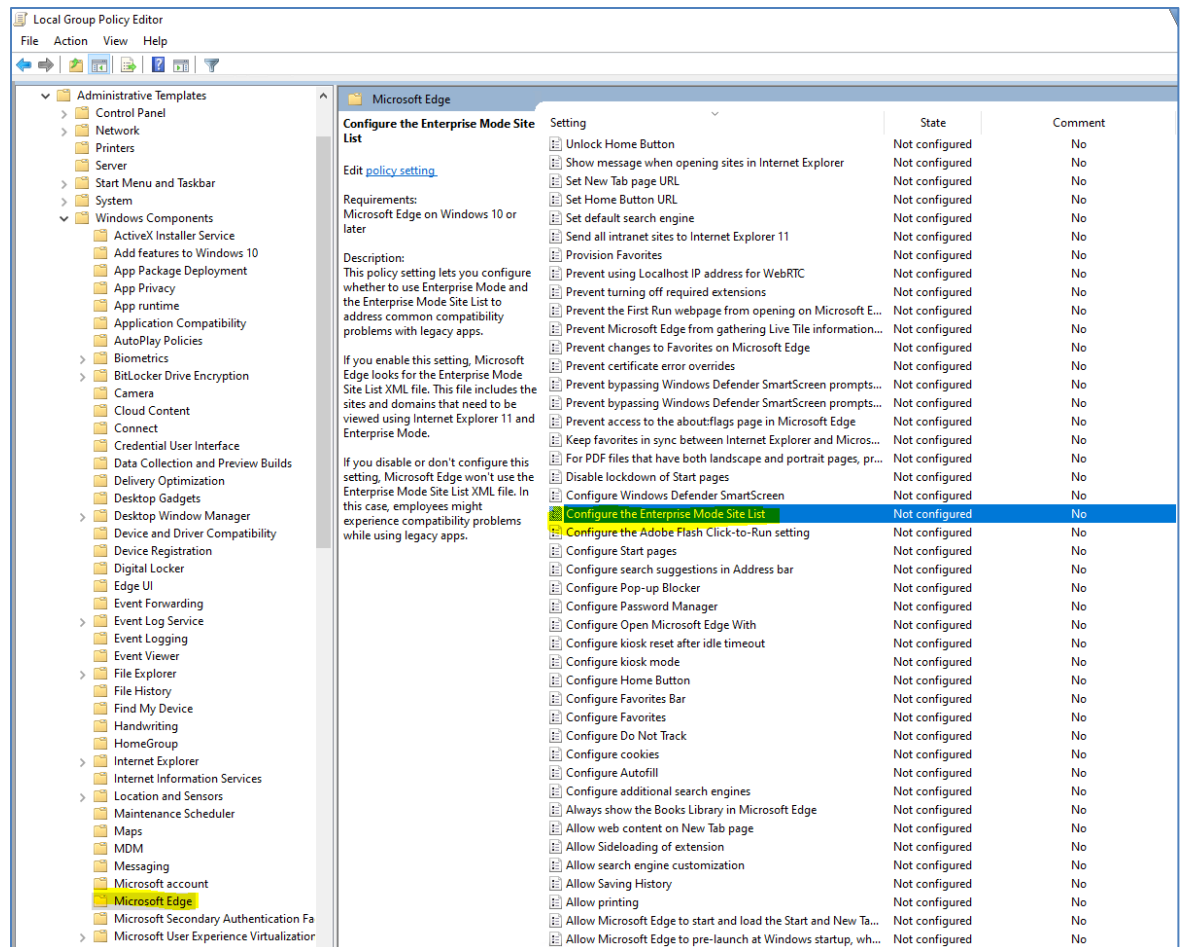
Under Options provide the location of the Site List XML saved at above step 3.a.vii as per below format

<file:///C:/Users/<user>/Documents/<XML file name>.xml>



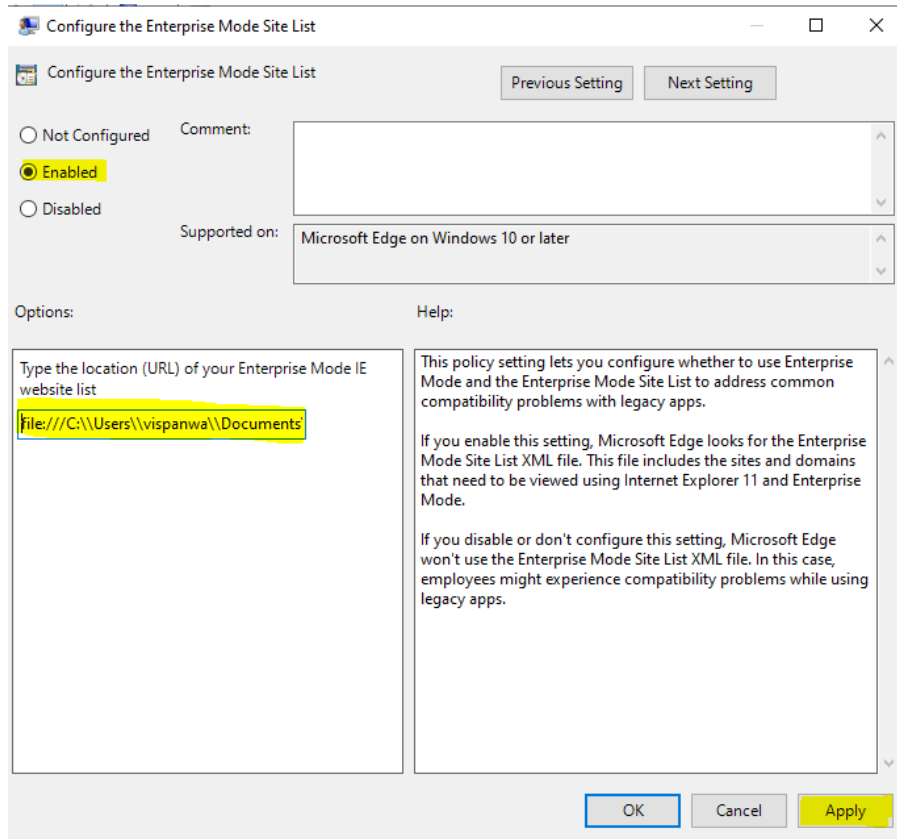
- 9 On Local Group Policy Editor window, navigate to Local Computer Policy > Computer Configuration > Administrative Templates > Windows Components > Microsoft Edge.

Double click on **Configure the Enterprise Mode Site List**

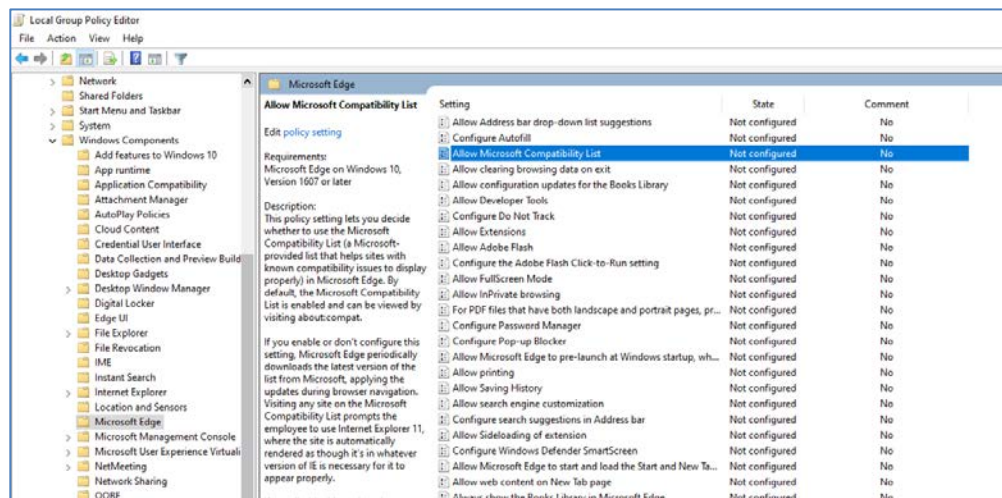


On the popup window set the below, and click on the **Apply** button

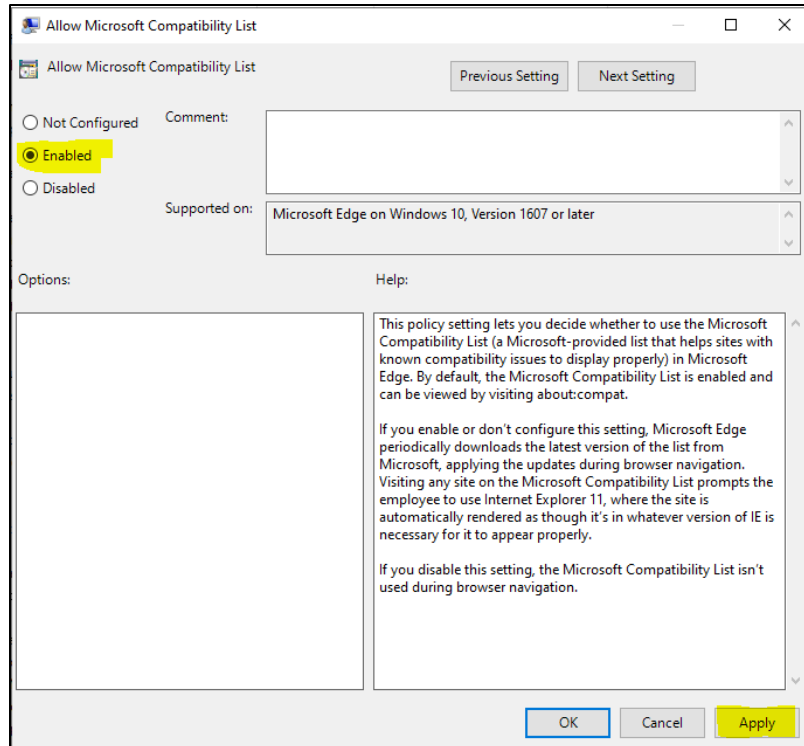
1. Check the Enabled radio button
2. Under Options provide the location of the Site List XML saved at above step 3.a.vii as per below format
<file:///C:/\Users\ \<user>\ \Documents \ \<XML file name>.xml>



- 10 On Local Group Policy Editor window, navigate to Local Computer Policy > Computer Configuration > Administrative Templates > Windows Components > Microsoft Edge.
 - Double click on **Allow Microsoft Compatibility List**

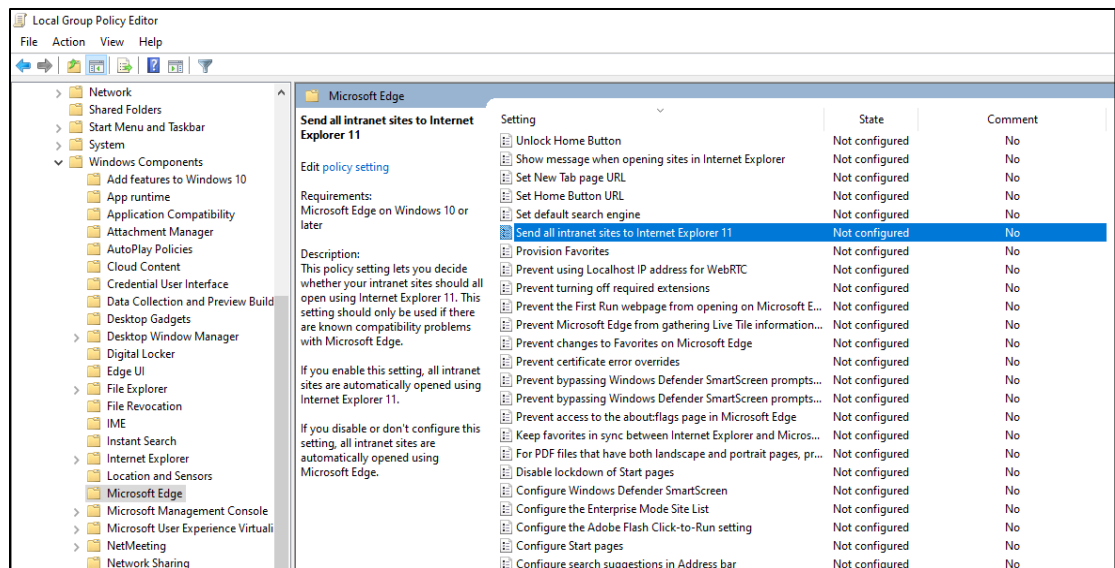


- On the popup window, Check the **Enabled** radio button, and click on **Apply** button

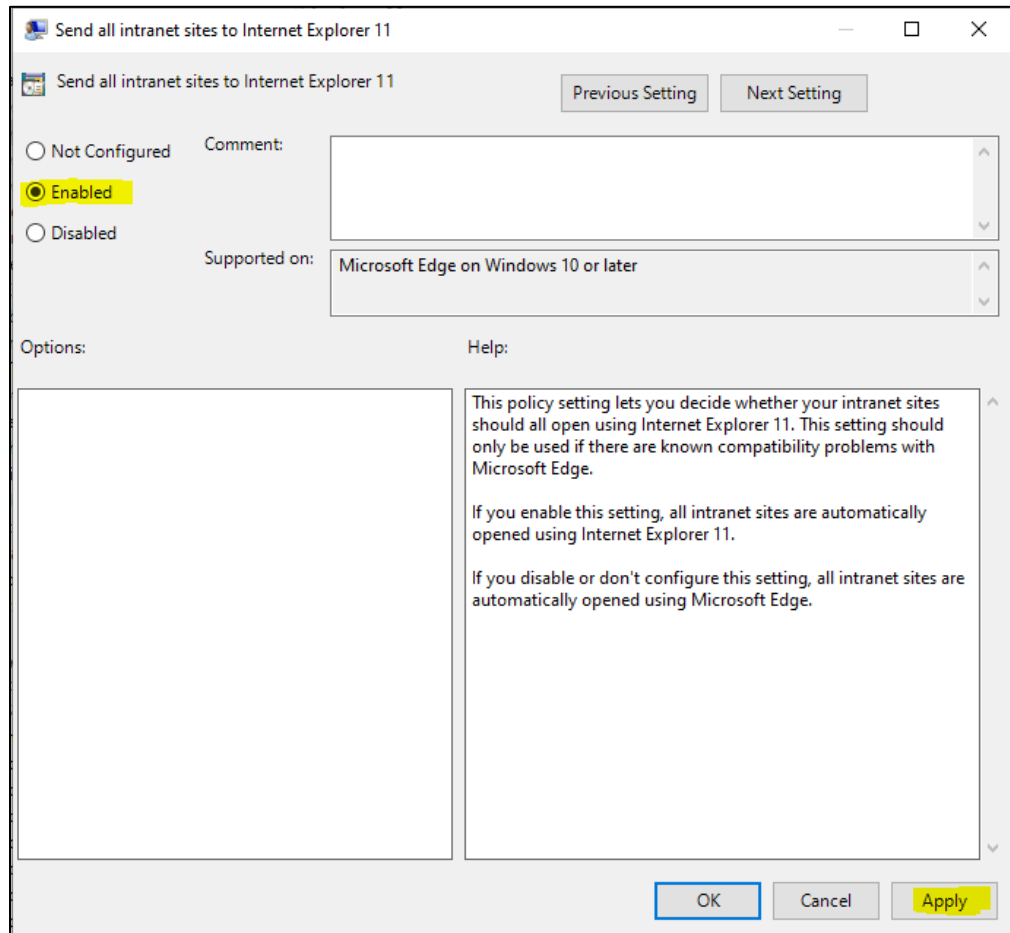


11 On Local Group Policy Editor window, navigate to Local Computer Policy > Computer Configuration > Administrative Templates > Windows Components > Microsoft Edge.

- Double click on **Send all Intranet sites to Internet Explorer 11**



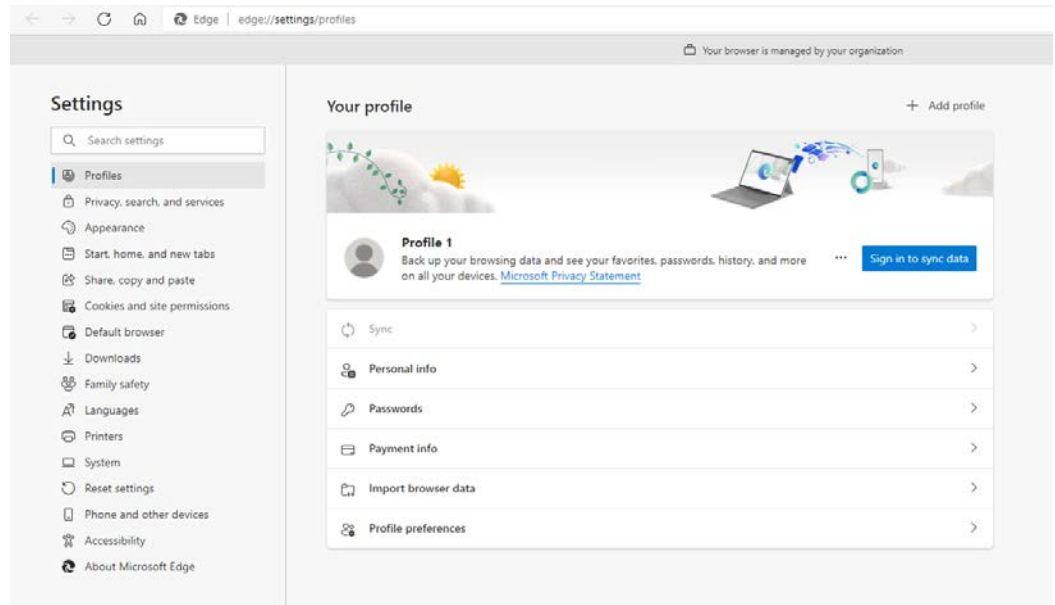
- On the popup window, Check the **Enabled** radio button, and click on **Apply** and **OK** button



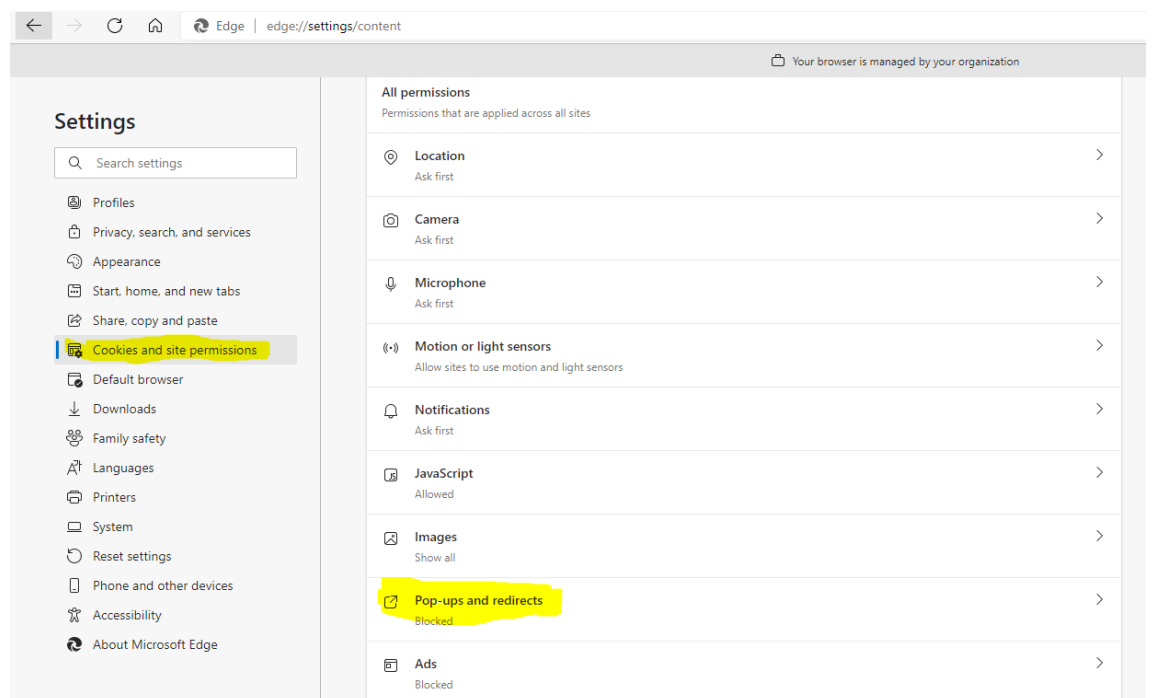
Popup Blocker setting for Reports Preview

Note: For PDF documents, if Acrobat Reader is not installed you have the option to **Save** the document or **Open** the document in your browser.

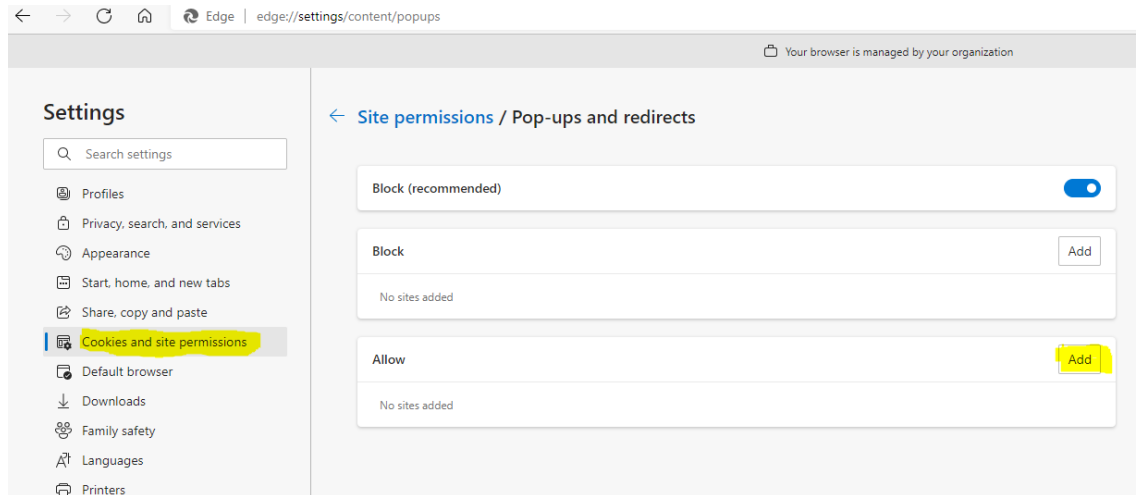
- a. Navigate to **Settings** on the Edge Browser



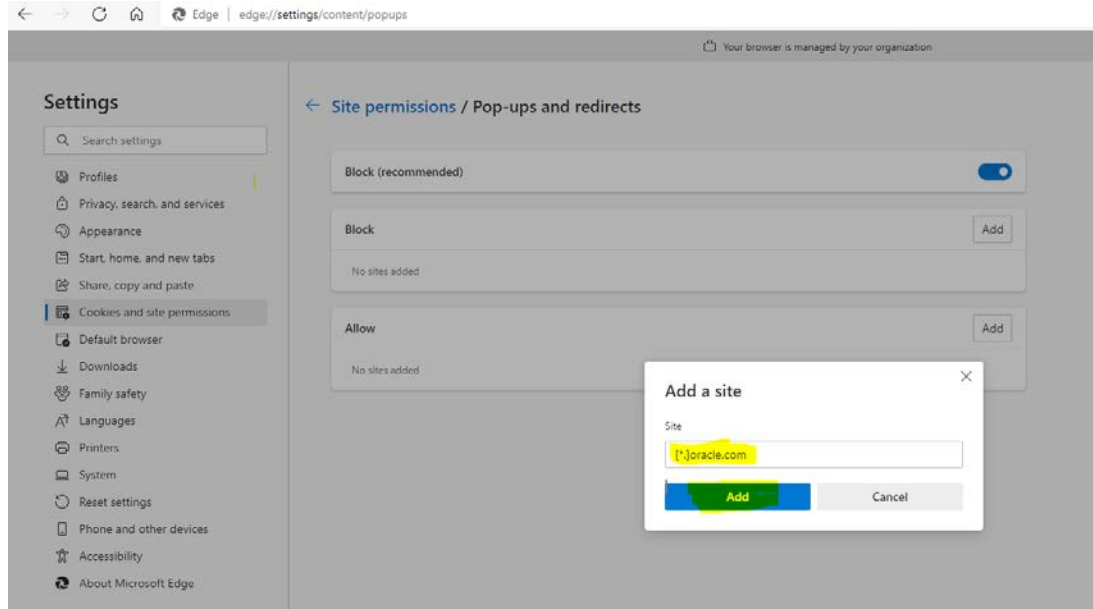
b. On the Settings page navigate to **Cookies and site permissions > Pop-ups and redirects**



c. Click **Add** button in the Allow section



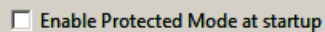
d. Add [*].oracle.com as the site and click Add button



5 Setting Adobe Acrobat Reader Preferences

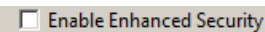
Depending on your Adobe Acrobat Reader version, the steps below may differ.

1. Open Adobe Acrobat Reader outside of the application.
2. Select **Edit**, select **Preferences**, select **Security Enhanced**, and unselect the **Enable Protected Mode at startup** check box.



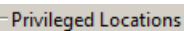
Enable Protected Mode at startup

3. Select **Edit**, select **Preferences**, select **Security (Enhanced)**, and unselect the **Enable Enhanced Security** check box.

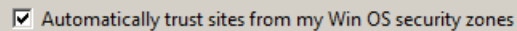


Enable Enhanced Security

4. Select **Edit**, select **Preferences**, select **Security (Enhanced)**, and select the **Automatically trust sites from my Win OS security zones** check box and verify that the OPERA URL is listed.



Privileged Locations



Automatically trust sites from my Win OS security zones

6 Installing Client Side Applications

Below listed is the only required client side application that needs to be installed for 5.6.5.x.

Installing Oracle Business Intelligence Publisher

Trying to install Microsoft .NET Framework 3.5 gives the following errors (which are also documented at http://docs.oracle.com/cd/E28280_01/bi.1111/e16518/toc.htm#BIEQI102):


- 0x800f0906: *Windows couldn't connect to the Internet to download necessary files. Make sure that you're connected to the Internet, and click Retry to try again.*
- 0x800F081F: *The changes could not be completed. Please reboot your computer and try again.*

Use the Microsoft Windows operating system installation media and the workaround:
DISM /Online /Enable-Feature /FeatureName:NetFx3 /All / LimitAccess
/Source:d:\sources\sxs

Now Microsoft .NET Framework 3.5 installs correctly and the BI Publisher installation can continue. For additional information about installing BI Publisher, see http://docs.oracle.com/cd/E28280_01/bi.1111/e16518/toc.htm#BIEQI102.

7 Un-Installing Client Side Applications (Optional)

With 5.6.5.x OPERA does not require to have Opera JinitCheck Control, Opera Register Terminal, and Oracle JInitiator XXXXX. Below steps should be carried out to clean-up existing workstations. Not performing uninstallation will not have any adverse effect, so this section will be optional. It should be noted that JInitiator XXXXX no longer exists with 5.6.x version, and should be uninstalled if installed from any previous version.

 **NOTE: Recommendations before un-installing client side applications**

Before un-installing client side applications, it is recommended to backup TermReg.ini from below location “%ALLUSERSPROFILE%\Oracle\Opera\TermReg.ini”.

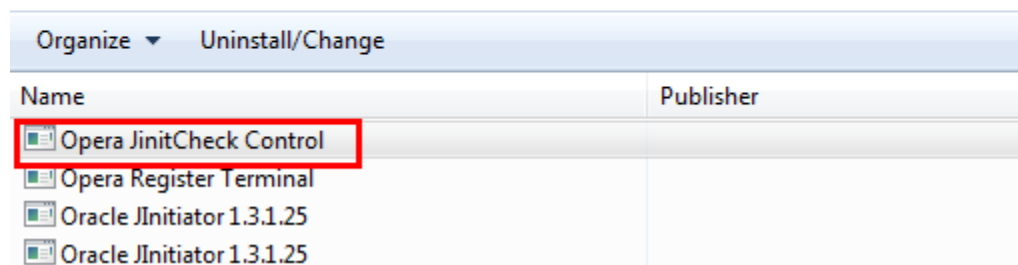
After un-installation is completed, verify “TermReg.ini” still exists in “%ALLUSERSPROFILE%\Oracle\Opera\TermReg.ini”.





Un-Installing Opera JinitCheck Control

1. Open Control Panel
2. Click on **Uninstall a program** under **Programs**
3. Select **Opera JinitCheck Control**
4. Right Click and select **Uninstall/Change**
5. Select **Automatic** and click Next
6. Click **Finish** button.

Uninstall or change a program

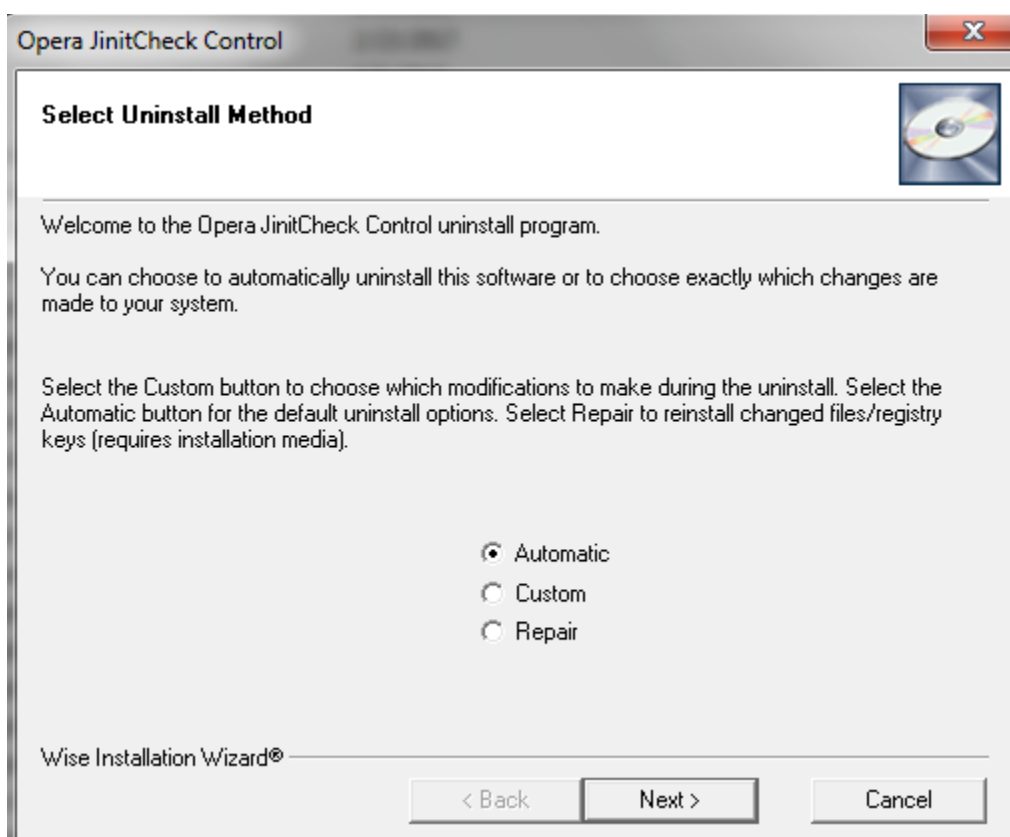
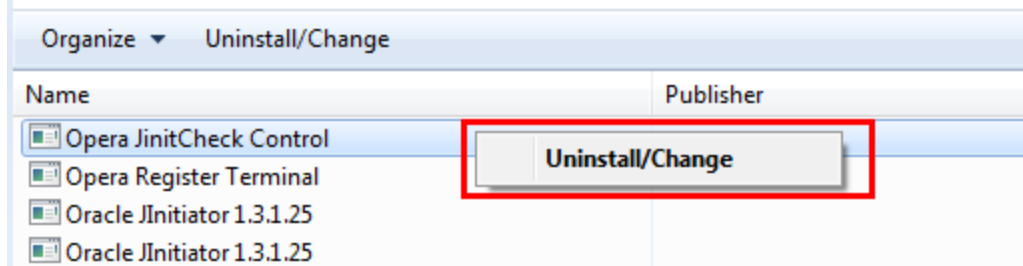
To uninstall a program, select it from the list and then click Uninstall, Change, or Repair.

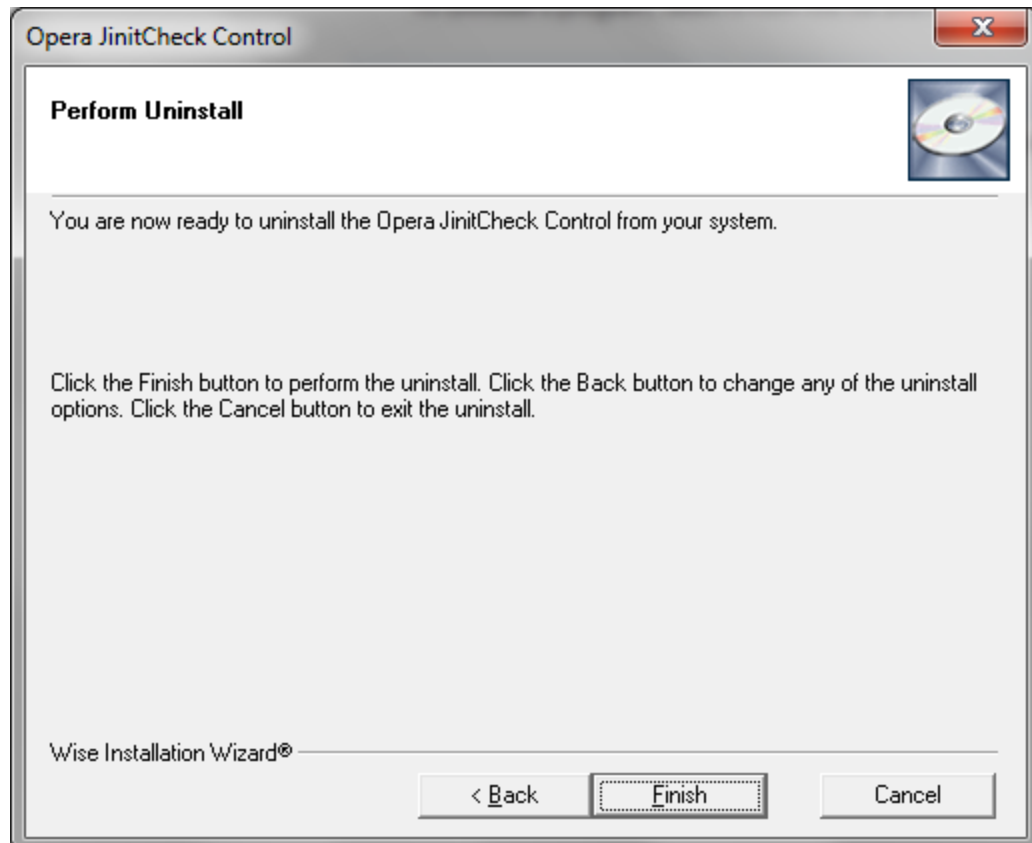


Name	Publisher
 Opera JinitCheck Control	
 Opera Register Terminal	
 Oracle JInitiator 1.3.1.25	
 Oracle JInitiator 1.3.1.25	

Uninstall or change a program

To uninstall a program, select it from the list and then click Uninstall, Change, or Repair.



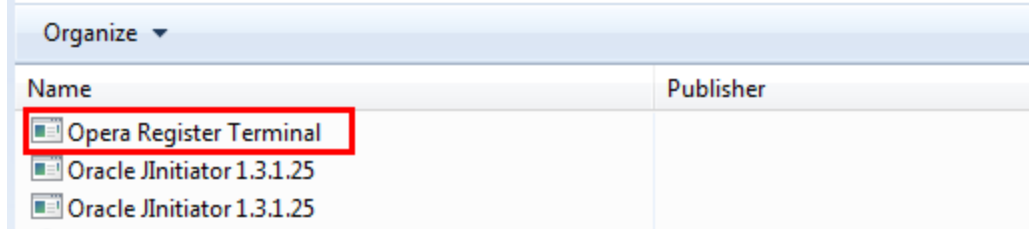


Un-Installing Opera Register Terminal

1. Open **Control Panel**
2. Click on **Uninstall a program** under **Programs**
3. Select **Opera Register Terminal**
4. Right Click and select **Uninstall/Change**
5. Select **Automatic** and click Next
6. Click **Finish** button.

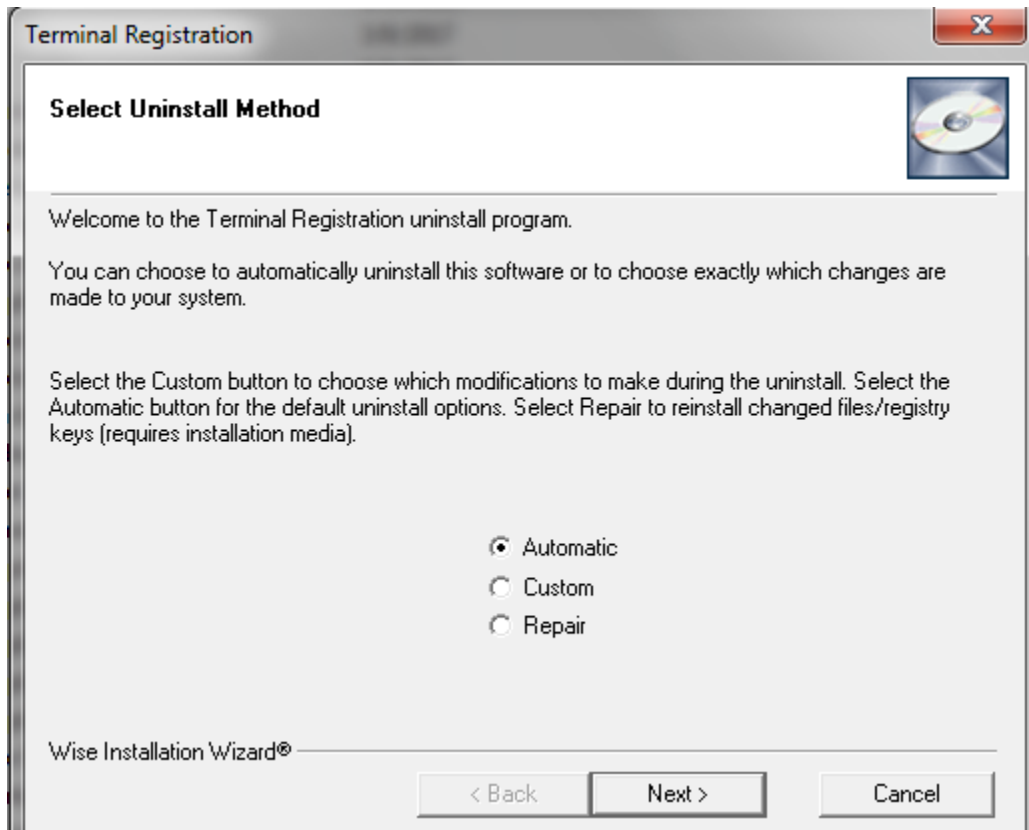
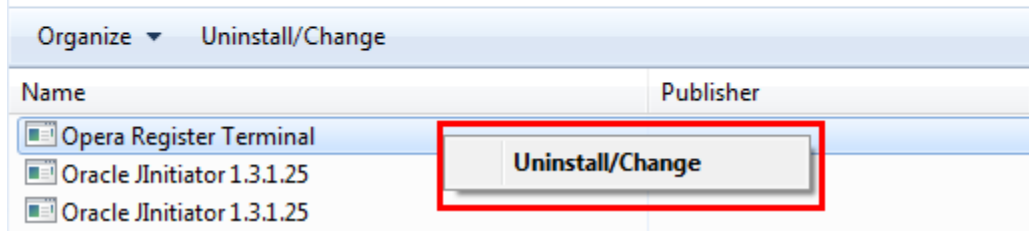
Uninstall or change a program

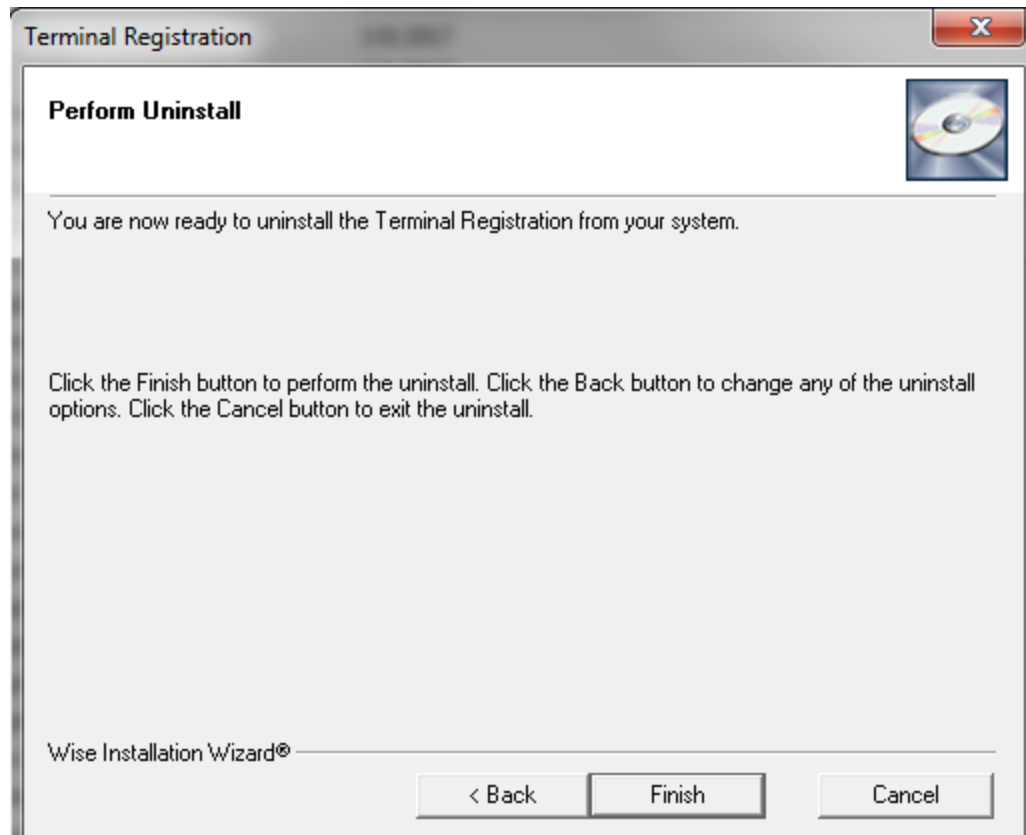
To uninstall a program, select it from the list and then click Uninstall, Change, or Repair.



Uninstall or change a program

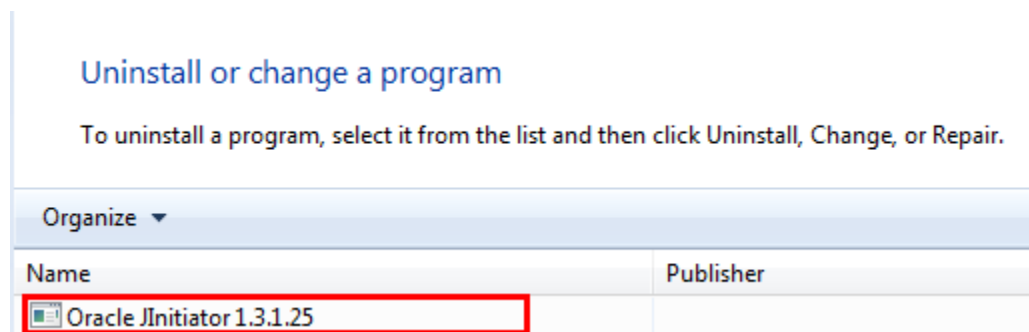
To uninstall a program, select it from the list and then click Uninstall, Change, or Repair.





Un-Installing Oracle JInitiator XXXX

1. Open **Control Panel**
2. Click on **Uninstall a program** under **Programs**
3. Select **Oracle JInitiator XXXX**
4. Right Click and select **Uninstall/Change**
5. Click **Yes** to confirmation message
6. Click **OK** button on successfully uninstalled message.



Uninstall or change a program

To uninstall a program, select it from the list and then click Uninstall, Change, or Repair.

