



THE  
FLORIDA STATE  
UNIVERSITY

COLLEGE of MEDICINE

# Regional Campus Review

*Orlando*

OCTOBER, 2013

## Dean's Message



Michael J. Muszynski, MD

As each year passes and another extraordinary class of FSU College of Medicine Orlando Regional Campus students graduate and the next class of excited students arrives, I can't help but think how fortunate I am to be in a position to represent the efforts of all who are striving to teach these talented young professionals. We have reached a milestone this year of 10 years of teaching excellence in Orlando, packed with amazing accomplishments. In 2003, Orlando was one of the three inaugural FSU medical school campuses, embarking on a venture described by the "experts" as foolhardy and doomed by its design to turn out substandard graduates. Community-based education was not a new concept, but the ways in which FSU designed it and the extent that FSU would use it were unprecedented. I have often described it as community-based education on steroids. The academic centers of that time asked, "How could an *entire* year 3-4 curriculum be entrusted to the likes of mere community faculty?" And the LCME medical school accrediting body agreed and denied us initial accreditation. Their accreditation process could not accommodate our inventiveness. In a change of mind (and perhaps heart as well), the LCME reversed that

decision and we worked with them to revamp the accreditation process for all the new schools that would follow us. The students, staff, FSU faculty and teaching partners kept the faith. In fact, the FSU faculty retention rate has been >85% over the last 10 years! So what are the experts saying now? Jordan Cohen, MD former President Association of American Medical College and current Arnold P. Gold Foundation Chairman recently stated, "I've just been overwhelmed by the quality and the passion and the commitment that FSU students have. That really speaks volumes for the success of the model of medical education that you've introduced here. You have a forward-looking way of educating students and introducing them to the future of medicine. Others should emulate what you are doing." And another education leader of special note remarked, "I think you have done it on the educational front, and I can't say enough good things about what you've accomplished in that regard. The problem is now we need to extend it to other medical schools and to the entire health-care system." Those are the latest words of Darrell Kirch, MD, current President and CEO of the AAMC. Dr Kirch chaired the LCME when it denied our initial accreditation. And today, our College of Medicine Dean sits on that same LCME in an executive capacity. Congratulations to us all!

### INSIDE THIS ISSUE:

- Class of 2014 2
- Orlando Campus 3
- 10th Year Anniversary 4
- 10th Anniversary Celebration Photos 4
- Community Partners and Student Scholarships 5
- AQA and Gold Humanism Honor Societies 6
- Faculty Development 7



**Congratulations Class of 2013!**

# Welcome, Class of 2015



Mitali Agarwal  
Apopka, FL  
UF



Justin Beyer  
Rockledge, FL  
FIT-Melbourne



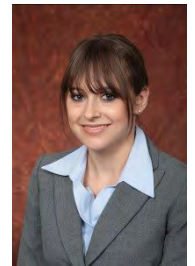
David Cristin  
Miami, FL  
FSU



Joseph Duran, Jr.  
St. Augustine, FL  
FSU



Sanjana Iyengar  
Orlando, FL  
Washington U.-St. Louis



Holly Klopfenstein  
Oviedo, FL  
UF



Rachel Mattio  
Naples, FL  
UF



Christopher McDonald  
Tallahassee, FL  
UF



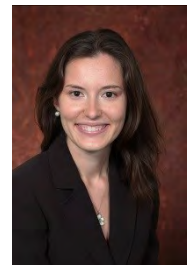
Joanna Meadors  
Maitland, FL  
UF



Nicole Meier  
Cincinnati, OH  
UF



Stephanie Morales  
Orlando, FL  
UCF



Amanda Morden  
Tallahassee, FL  
UF



Patrick Murray  
Orlando, FL  
B.S. Loyala/M.S. Boston



Anushi Patel  
Longwood, FL  
FSU



Crystal Pickeral  
New Port Richey, FL  
FSU



Sheri Poskanzer  
Orlando, FL  
UCF



Huma Razzaq  
Orlando, FL  
UCF



Jonathan Salud  
Lake Wales, FL  
B.S. Tulane/MPH Columbia



Brady Schmidt  
Pensacola, FL  
UF



Larry Sorrell  
Tallahassee, FL  
FSU



Ryan Sutherland  
Tampa, FL  
UCF



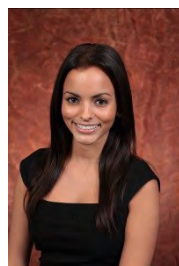
Lyvie-Sara Sylvestre  
Port-Au-Prince, Haiti  
UF/FIU



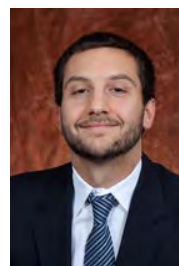
Natalie Voithofer  
Lakeland, FL  
FSU



Mike Yuan  
Changzhi, China  
USF



Day Zayas  
San Juan, PR  
UCF/FSU



Zachary Zimmerman  
Orlando, FL  
Davidson



Tyler Zorn  
Tallahassee, FL  
FAMU

# FSU Orlando Regional Campus 10th Anniversary



In 2003 the **Orlando Regional Campus** headquarters were established in the quaint neighborhood of Delaney Park, reflective of our community-based education model and mission. Much had been accomplished to begin an ambitious curriculum where all of the educators for years 3 and 4 were community faculty. Clerkship Directors were hired with the additional responsibility of leading the faculty. Teaching agreements and affiliations were established with all of the major hospitals, 180 faculty, Orange County Medical Society, as well as community organizations. Countless hours of faculty development were needed to assure curriculum delivery. In July, 14 pioneering year-3 students began their clinical education at the inaugural Orlando Campus.



After 5 years, the campus outgrew the Delaney office. In 2008 the campus moved to Colonial Drive in North Downtown Orlando into space expressly designed for an FSU regional campus. In fact, many similarities to the learning communities at the main campus building back in Tallahassee have been noted.



The formula for the successes of the Orlando Regional Campus is much more than mere office facilities. The dedication of the campus staff, each of whom are the embodiment of an entire department in the medical school at the regional level, cannot be overestimated. Committed faculty, steadfast teaching partners and institutions, and superb students within a novel, superior curriculum structure are the backbone of our accomplishments:

**2003** Community-based education model established in Orlando

**2004** Sherwood Gift to establish annual lectureship on HIV/AIDS

**2004** Community Medicine clerkships established at 15 agencies

**2004** Narrative Medicine and Patient-Centered Ethics Program established

**2005** First new medical school fully accredited in 21st century and in 25 years

**2005** Inaugural class graduates

**2007** Board Examination scores at graduation well exceed national averages

**2008** Move to new facility

**2008-9** First FSU COM alumni appointed as FSU COM faculty

**2010** "Ten for Ten" student volunteerism campaign (10 agencies still working with FSU today) commences

**2011** Community faculty appointments exceed 500; virtually all specialties offered

**2011** FSU Clinical Research Network established with main office at Orlando Campus

**2011** New Florida 2010 Scholar's Boost and Clustering Award (UF-FSU Community Research Collaborative Program in Pediatrics, Internal Medicine, Family Medicine) \$600,000

**2011** Received Clinical and Translational Science Award - University of Florida R01 and Florida State University Collaborative

**2011** Received full 8-year LCME Reaccreditation with five commendations

**2012** Established Heath IMPACTS for Florida established (The unique collaboration between the University Florida and Florida State University to facilitate community-based clinical research)

**2012** Year-4 scholarship program initiated

**2013** Orlando Campus medical student USMLE Step 2 Clinical Knowledge Board Score average reaches all time high (245)

**2013** \$2,000,000 Florida Hospital Foundation, Excellence in Medical Education Endowment, awarded to Orlando Campus

**2013** City of Orlando partnership created to form SSTRIDE Orlando (Science Students Together Reaching Instructional Diversity & Excellence), a public school program

Thus, it was fitting that over 200 attendees consisting of faculty, dignitaries, guests, FSU COM staff and leadership gathered at the Coronado Springs Resort to celebrate 10-years of accomplishment at our college and national accolades it has earned. We began as the experiment said to be doomed to failure, only to persevere to become a medical school experts now say should be emulated. We always knew it would work. We just underestimated how great it would become.



OrangeCounty  
MEDICAL SOCIETY





# Shepherd's Hope and Orange County Medical Society

The Orlando Regional Campus honored **Shepherd's Hope** for ten years of student and faculty volunteerism partnership. Rodger Wunderlich, Orlando Campus Student Support Coordinator, presented the award to **Marni Stahlman** (CEO) and **Shari Vander Wiede** (Vice President of Communications and Development), saying "Shepherd's Hope and our campus have grown together. We have done more than intersect; we have intertwined. They are a community based source of medical care for underserved populations. We are a community based medical college developing exemplary physicians who respond to the needs of underserved populations. We assist Shepherd's Hope, they benefit our students, and through that cooperation many needy people receive the blessing of medical care."

*Partnering with Orange County Medical Society: 10 years and counting!*



The **Orange County Medical Society**, represented by President **Stephen Rosenberg, MD**, was honored by FSU leadership for its longstanding partnership with the Orlando Campus. **Mollie Hill**, Director of Community Clinical Relations for FSU presented the award, stating, "OCMS was instrumental during the founding of the Orlando Campus in developing physician educator resources necessary for success of the FSU mission. OCMS has been our valued partner in support of medical education over the last ten years." Orlando Campus Dean, **Michael Muszynski, MD**, who has served OCMS as an officer and on the board of directors, recalled the vital role of OCMS from the very start. "FSU is all about community in everything it does. We are proud to have OCMS as a founding partner in the venture that created the first newly accredited medical school of the 21st century."



## Student Scholarship Winners

Four students were awarded the Orlando Regional Campus Merit Scholarship. This \$5,000 scholarship is given to one or more fourth year students in good academic standing who have demonstrated meritorious academic, service, or clinical performance while assigned to the Orlando Regional Campus, and who have a demonstrated financial need.

Congratulations to **Angela Guzman** and **Li Li** (pictured top, left to right) and **Joseph Limback** and **Taylor Smith** for their exemplary performance.

The Merit Scholarships were made possible by generous donations to the Orlando RMSC Scholarship Fund. For information about how you can donate, please see [click here](#).



Joseph Limback



Taylor Smith

## Alpha Omega Alpha Inductees

Alpha Omega Alpha (ΑΩΑ) is the national medical honor society which is “dedicated to the belief that in the profession of medicine we will improve care for all by recognizing high educational achievement, honoring gifted teaching, encouraging the development of leaders in academia and the community, supporting the ideals of humanism, and promoting service to others” (for more information about ΑΩΑ, please click [here](#)). The Orlando Regional campus is proud to announce the Class of 2014 students inducted into ΑΩΑ this year.



Angela Guzman



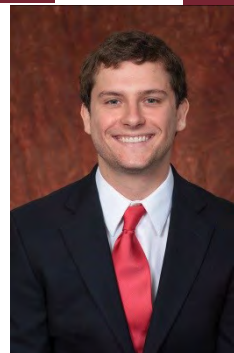
Li Li



Jessica Specht



Matthew Welsh



Zachary Williamson

## Gold Humanism Honor Society Inductees

Orlando Regional Campus Year-Four students **Angela Guzman, Jessica Specht, and Matthew Welsh** (*all pictured above*) are the most recent inductees included among the Class of 2014 Gold Humanism Honor Society (GHHS) members.

"The GHHS comprises individuals who have been recognized for practicing patient-centered medical care by modeling the qualities of integrity, excellence, compassion, altruism, respect and empathy. Members

may be selected as 3rd and 4th year medical students. Residents, faculty and administrators may also be recognized for humanistic practice at various stages in their careers."

For more information about the GHHS, please click [here](#). Congratulations to these Orlando Campus students for exemplifying the FSU College of Medicine mission and for their nomination to the Gold Humanism Honor Society.

## Donate to the Orlando Regional Campus

You, too, can support the students of the Orlando Campus by a donation toward scholarships. Please consider making a gift to the Orlando RMSC Scholarship Fund.

Also, ask us about *naming opportunities* to honor your gift:  
Contact Cindy Porter at [cynthia.porter@med.fsu.edu](mailto:cynthia.porter@med.fsu.edu).

If you would like to make an unnamed gift online, please click [here](#) and designate your gift for the Orlando Regional Campus.

## Faculty Development

Do you teach a required course? Remember, you need to earn a minimum of two faculty development credits each year!



These photos were taken at an Orlando Regional Campus LIVE faculty development session, “Effective Clinical Teaching: Views from Our Learners.” This workshop featured a panel of third and fourth year students (*above*) who helped lead a lively topic discussion. If you would like to attend one of our live sessions, please see below!

## Upcoming Sessions

Check our website, [med.fsu.edu/orlando](http://med.fsu.edu/orlando), for the faculty development schedule.

Current faculty, be on the look-out for email reminders and save-the-date postcards!

For all workshops:

RSVP TO: Rachel Meek

Email: [rachel.meek@med.fsu.edu](mailto:rachel.meek@med.fsu.edu)

Phone: 407-835-4103

*For Directions to the Orlando Regional Campus, please click [here](#).*