

## **How to Reduce, Donate, Reuse, Recycle and Dispose Of In the Process off Decluttering or Downsizing**

This is a document meant for those living in New Haven County to give them more useful local information than can be found on the Ct DEEP site, or more nationally oriented websites, both of which are still very useful in educating citizens, businesses and governments. Much of what is in this document came from the websites of organizations who are concerned with how to manage our waste. Anything that we no longer want can be considered potential waste. Therefore, thought needs to go into the responsible process of letting it go so than it finds a new home and doesn't become waste in a landfill or incinerator.

“What is the use of a house (and possessions) if you haven't got a tolerable planet to put it on?”

— [Henry David Thoreau, Familiar Letters](#)

**Zero waste is the ultimate goal**

### **INDEX**

A. – p 2	Useful Websites for Understanding the How to (websites)
B. – p 3	Local Organizations Who Accept What You No Longer Want (websites)
C. – p 4 – 17	How to Dispose of These Items List
D. – p 18	The Countries Winning the Recycling Race
E. – p 19 - 25	Donation and Reuse Places
F. – p 26 - 30	Recycle Places – Retailers
G. – p 31 - 38	Recycle Places – Local Carting and Hauling, Local Transfer Stations, Shredders, Haz Waste Central

## A. - Useful Websites for Understanding the How to

Reduce consumption first, reuse of products 2<sup>nd</sup>, recycling is the last option

**Important Websites** [just click on the web link](#)

**Earth 911** <https://earth911.com>

**Recycle Nation** <https://recyclenation.com/>

**CT DEEP** [http://www.ct.gov/deep/cwp/view.asp?a=2714&q=437786&deepNav\\_GID=1645](http://www.ct.gov/deep/cwp/view.asp?a=2714&q=437786&deepNav_GID=1645)

**National Recycling Coalition** <http://nrcrecycles.org/>

**Northeast Recycling Council** <https://nerc.org/>

**Recycler's World** <http://www.recycle.net/recycle/>

**Global Recycling Network** <http://www.grn.com/>

**US Environmental Protection Agency** <https://www.epa.gov/smm/wastewise>

**Recycle CT Foundation** <http://www.recyclect.com>

**How to Recycle** <http://www.how2recycle.info/>

**Yale Sustainability** <http://sustainability.yale.edu/>

**Next Level for Recycling** <http://www.nlr-green.com/>

**Freecycle** <https://www.freecycle.org/browse/US/Connecticut>

**Furniture Bank Assoc of North America** <http://furniturebanks.org/>

**Eco-Cycle** <http://www.ecocycle.org/>

**Institute for Local Self-Reliance** <https://ilsr.org/>

**Terracycle** <http://www.terracecycle.com/en-US/>

### BOOKS

Outsmart Waste by Tom Szaky

Junkyard Planet by Adam Minter

## B. - Local Organizations Who Accept What You No Longer Want

Please use the following Organizations to donate to, or the Websites Craig's List Free and Freecycle, or your front sidewalk, so that others may benefit of what you no longer want. More information in Sect 2 **just click on the web link**

**Many of these will do Home Pickups**

Easter Seal Goodwill [www.goodwill.org](http://www.goodwill.org),

Salvation Army <http://ctri.salvationarmy.org/SNE/NewHaven>

ReStores by Habitat for Humanity <http://newhavencountyrestore.org>

Savers <https://stores.savers.com/ct/orange/>

Vietnam Veterans of America <https://pickupplease.org/contact-us/>

Christian Community Action <https://www.ccahelping.org/>

Helping Hands [www.helpinghandsctfb.com/](http://www.helpinghandsctfb.com/)

IRIS <http://www.irisct.org/>

Big Brothers Big Sisters <http://www.bbbsswct.org>

New Reach <http://newreach.org/>

EcoWorks <https://ecoworksct.org/>

Donation Drop-Off [DonationTown.org](http://DonationTown.org)

Urban Miners <http://www.urbanminers.com/>

New England Reuse [www.nereuse.us](http://www.nereuse.us)

Rainbow Recycling

Peels and Wheels <https://peelsandwheelscompost.wordpress.com/>

John's Refuse, All American Waste, Junkluggers, 1800Got-junk?

There are many Consignment Shops in the area also like

Plato's Closet <https://www.platosclosethamden.com> (pays for trendy clothes)

The Barn Sale 203 248-9185 2407 Dixwell Ave, Hamden

Twice is Nice 203 626-0423 169 North Plains Industrial Park, Wallingford

Or Auction Houses like <https://www.ricksoldschoolauctions.com>

## C. - How to Dispose of These Items List

### How to Reuse or Recycle the Following Household Items

Please **Donate** rather than disposing of where possible

#### **Aerosol Cans**

Empty aerosol cans that once contained food can go in recycling.

These can usually be recycled with other cans, as long as you pull off the plastic cap and empty the canister completely.

Cans with paint or hazardous materials go to HazWasteCentral May - October

#### **Ammunition**

Surrender it to the local police or state police. Local gun range. Haz-Waste?

#### **Antifreeze**

HazWaste Central May-October

#### **Antiperspirant and deodorant sticks**

Many brands have a dial on the bottom that is made of a plastic polymer that's different from the plastic used for the container, so your center might not be able to recycle the whole thing (look on the bottom to find out). Tom's of Maine makes a deodorant stick composed solely of plastic No. 5.

#### **Art Supplies**

If they don't contain toxic materials, donate to art schools or creative art reuse centers like Ecoworks, or give to a local school or Goodwill and charities. Toxic goes to HazWaste Central.

#### **Asbestos**

Encapsulation is best, otherwise contact a hauler to transport the ACM to an approved disposal site. There is only one, it is in Portland, CT.

#### **Ash**

From wood, coal or charcoal should be bagged and put in the trash, make sure it is truly non-flammable.

## **Autos, Jet Skis, boats, trailers, RVs, and motorcycles**

Even if these are unusable—totaled, rusted—they still have metal and other components that can be recycled. Call junkyards in your area, or go to [junkmycar.com](http://junkmycar.com), many charity groups, WPKN, which will pick up and remove cars, trailers, motorcycles, and other heavy equipment for free.

Cars are typically recycled at a junk yard where they are crushed and then sold as scrap metal, the price of which is rather high these days. You will most likely pocket anywhere from \$200-\$500 for an old car, depending on the price of metal. Another, better option is to donate your old car.

Before you recycle: Remove the tires, and clean the car, taking special care to remove anything that may have fallen into cracks and crevices. You never know how much loose change, jewelry or other small valuables you may find. Most importantly, sweep the glove box to make sure there are no receipts with any identifying information.

## **Auto Parts**

Alderman-Dow 203-562-1594, 358 Chapel St, New Haven

Sims Metals 203 777-2591, 234 Universal Drive, North Haven

To junkyards

## **Backpacks**

The American Birding Association accepts donated backpacks, which its scientists use while tracking neotropical birds ([americanbirding.org](http://americanbirding.org)).

## **Batteries**

Recycling batteries keeps hazardous metals out of landfills. Many stores, like RadioShack, Home Depot and Office Depot, accept reusable or rechargeable ones. Car batteries contain lead but almost any retailer, Firestone, Walmart etc, selling them will also collect and recycle them.

1. Batteries + Bulbs at 2460 Dixwell Hamden and 481 Boston Post Road Orange
2. Battery Solutions will accept old batteries through the mail.
3. Ikea stores also take batteries for recycling.
4. Best Buy takes any type of tech-y batteries like camera batteries and gaming batteries.
5. Whole Foods stores allow you to recycle batteries, paper and lightbulbs
6. Lithium and zinc batteries to HazWaste Central May-October
7. Rechargeable batteries take to Home Depot, Wal-Mart and Best Buy.

## **Bicycles**

Bradley Street Bicycle Co-op in New Haven, Goodwill and scrap metal yards

## **Books**

Hard covers are too rigid to recycle, so we ask people to remove them and recycle just the pages. In many areas, paperbacks can be tossed in with other paper.

New Haven Reads (978) 284-2500 45 Bristol St New Haven, CT 06511

Better World Books – **Look for green bins** Parkway Plaza - Hamden 1869 Dixwell Ave Hamden, CT 06514 **and** 410 Universal Drive North Haven, CT 06473

Books & Company, 1235 Whitney Ave, Hamden CT (203) 248-9449

Whitlock's Book Barn 20 Sperry Rd, Bethany, CT (203) 393-1240

The Book Barn 41 West Main St, Niantic, CT 06357 (860) 739-5715

Donate your books to Goodwill or another charity of your choice.

1. Donate your books to a local shelter, your public libraries, senior centers, friends. Other book recycling resources include the [International Book Project](#), [Books for Africa](#), [Books First](#), [Bridge to Asia](#), and [Better World Books](#). [Big Hearted Books](#) donate much of what they collect to nursing homes, prison reading programs, local libraries, as well as sell a portion of usable books, and recycle what can't be redistributed.
2. Sell your books on Amazon.

Donate them on [Freecycle.org](#)

3. Sign up for [Book Crossing](#) and follow your books around the world after you donate them.

**Before you recycle:** Make sure it's fairly clean, remove book marks or any tiny pieces of paper, and unfold any corners.

## **Building and Home Materials**

Urban Miners and New Haven Recovery

Transfer Station or Local Dumpster and Carting companies

## **Carpeting**

Go to [carpetrecovery.org](http://carpetrecovery.org) and click on “What can I do with my old carpet?” to find a carpet-reclamation facility near you, or check with your carpet’s manufacturer. Some carpet makers, like Milliken ([millikencarpet.com](http://millikencarpet.com)), Shaw ([shawfloors.com](http://shawfloors.com)), and Flor ([flor.com](http://flor.com)), have recycling programs. Currently no one in CT is accepting.

## Transfer Station

## **Cell Phones**

Cell and smartphones are quickly becoming a huge source of trash in the U.S. Luckily, there are organizations to help you recycle your cell phones locally and without much travel or effort on your part. The Wireless Foundation refurbishes old phones to give to domestic-violence survivor [calltoprotect.org](http://calltoprotect.org). For information on other cell-phone charities, log on to [gowirelessgogreen.org](http://gowirelessgogreen.org). Cell phones and used cell phone batteries can be recycled through the [Call2Recycle Program](#). Participating retail outlets include Wal-Mart, Radio Shack, Circuit City and Home Depot.

1. Best Buy, Staples, Goodwill, Target, Home Depot will accept used **cell phones**.
2. Donate your cell phone to [Hope Line](#).

**Before you recycle:** Wipe your phone of any personal data (numbers, notes, etc).

## **Cleaning Products that contain hazardous chemicals**

HazWaste Central    May-October

## **Clothes**

Clothes recycling is really clothes consignment, and I found it very difficult to find one website that catalogs all consignment shops. The best way to find one is to ask around with friends or family, or inquire at your favorite department store.

Places to Recycle Clothes:

1. Goodwill, Savers , Salvation Army, Habitat Restore, Vietnam Veterans, Christian, Community Action, Helping Hands, IRIS, Big Brothers Big Sisters, Charities
2. Tag or garage sale or Ebay
3. [Freecycle.org](http://Freecycle.org)
4. Besides clothing, such as shirts, pants, dresses and shorts – textiles include bedding, backpacks, curtains, towels, stuffed animals, gloves, belts, ties, purses, handbags, shoes, slippers, undergarments and even holey socks! Many organizations will accept textiles that you may consider unwearable, like holey socks or ripped t-shirts, and recycle them to make other products such as wiping rags, car seat and pillow stuffing, and household insulation. The key is getting the message out to communities and residents - **don’t judge - just donate!**

5. A portion of these textiles are sold by charities locally or distributed overseas to be resold as usable clothing while the clothing or other textiles that are not in good condition are reused as rags or recycled into fibers. In Connecticut, we dispose of about 96,500 tons of textiles every year in our waste-to-energy facilities. This costs Connecticut municipalities and taxpayers close to \$5.7 million in unnecessary disposal tipping fees

6. **Manufacturer and Retailer Programs**

7. [Eileen Fisher: Green Eileen](#) - Eileen Fisher Brand Only  
[H&M: Don't Let Fashion Go To Waste](#) - Any Brand  
[Nike: Reuse-A-Shoe](#) - Athletic Shoes Only, Any Brand  
[Patagonia: Common Threads](#) - Patagonia Brand Only  
[Puma: Bring Me Back](#) - Any Shoe Type, Any Brand  
[The North Face: Clothes the Loop](#) - Any Brand

**A Unique Corporate Commitment to Reducing Textiles**

Check out Patagonia's [Common Threads Partnership](#), a corporate view on producing quality, durable goods and promoting buying less.

8. **Some Additional Online Textile Reuse Outlets**

9. Consider donating your goods to Goodwill Industries, Salvation Army, Vietnam Veterans of America, or some other organization.
- 10.
11. [Donationtown](#) - helps you find a charity in your area that will pick up your donation for free.
- 12.
13. [Bra Recyclers](#) - a textile recycling company that specializes in the recycling and reuse of used and unused bras. The bras are distributed around the world through exporters and Bra Recycling Ambassadors to deserving women and girls in transition.
- 14.
15. [Soles-4-Souls](#) - a non-profit organization that encourages reusable shoe collection events at schools and through community groups. The shoes are then sent to developing countries.
- 16.
17. [The National Odd Shoe Exchange](#) - will accept donations of NEW single shoes for folks needing only one shoe - great if your dog ate one of your new shoes!
- 18.

## **Computers and Electronics**

Most cities and towns have special days reserved for electronics recycle, and there are several outlets who will take old televisions computers off your hands. They are typically called "green" recycling centers and the like.



check [epa.gov](http://epa.gov) for a list of vendors) or donate them to a charitable organization (log on to [sharetechnology.org](http://sharetechnology.org) or [cristina.org](http://cristina.org)). [Nextsteprecycling.org](http://Nextsteprecycling.org) repairs your broken computers and gives them to underfunded schools, needy families, and nonprofits.

1. Best Buy, Staples, Office Depot, Goodwill will accept all used computers and electronics
2. Computers For Schools
3. [National Center for Electronics Recycling](http://NationalCenterforElectronicsRecycling.org)
4. [Freecycle.org](http://Freecycle.org)

**Before you recycle:** Wipe the hard drive (here's how to do that, [Prepare Your Hard Drive for Disposal](#)) to make sure there is absolutely no personal or identifying information left on the computer.

### **Construction Materials and Demolition Debris**

Urban Miners and New Haven Reuse might accept some used cabinetry, flooring, fixtures or other salvaged building materials. Otherwise, local carting companies.

### **Cooking Oils**

Do not dispose of in sink, but put in container and then in trash.

### **DVDs, CDs and cases**

if you just want to let it go and not worry about it ending up in a landfill, send it (along with DVDs and jewel cases) to [greendisk.com](http://greendisk.com) for recycling.

### **Goodwill, Best Buy and Transfer Station**

[Back Thru The Future CD/DVD Recycling Program](#) Mail-in Program (973) 823-9752  
1 Park Dr, Suite 9 Franklin, NJ 07416

[CD Recycling Center of America](#) Mail-in Program (603) 894-5553

68 E Stiles Road Salem, NH 03079

### **Fire Extinguishers**

There are two types of extinguishers. For a dry-chemical extinguisher, safely relieve the remaining pressure, remove the head from the container, and place it with your bulk-metal items (check with your local recycler first). Alternatively, call fire-equipment companies and request that they dispose of your extinguisher. Carbon dioxide extinguishers are refillable after each use.

### **Transfer Station or HazWaste Central**

## **Fireworks**

Local fire marshal or police.

## **Food**

Food wastes can be composted at home, or through local services like Peels and Wheels. Compost is available from some local transfer stations.

At home, you should never put grease, oils or fats down your drain. Oils and fats can be disposed of in your regular trash. Hot oil should be allowed to cool. Place in a can or container before putting it into trash.

## **Furniture**

Options for recycling furniture abound: you can DIY it and improve it, you can re-purpose it (like re-purposing an old set of kitchen cabinets to hold tools and sporting equipment in your garage), donate, sell it (Craigslist, eBay, garage sale), or you can truly recycle furniture. The best way to do this is to call your local town hall and see which days they will pick up over-sized trash. I recommend putting this out on the curb the evening prior, giving people who may want your furniture some time to pick it up before the trash collectors come your way.

Goodwill, Savers , Salvation Army, Habitat Restore, Vietnam Veterans, Christian, Community Action, Helping Hands, IRIS, Charities

Freecycle.org

Transfer Stations

**Before you recycle:** Make sure it's fairly clean.

## **Gasoline and Motor Oil**

Connecticut law requires every town in the State to provide its residents with a way to properly dispose of the used oil generated by their residents.

HazWaste Central    May-October

## **Glasses and Eyewear**

Eyewear should ways be donated, unless it is smashed to bits, in that case, it should be treated as plastic and recycled the way you would a bottle of Snapple. if you donate them to neweyesforheneedy.com (sunglasses and plastic frames in good condition can also be donated). Or drop off old pairs of glasses at LensCrafters, Target Optical, or other participating stores and doctors' offices, which will send them to onesight.org.

Places to Donate Glasses & Eyewear:

1. Your local Lions Club
2. [OneSight.org](http://OneSight.org)
3. Pearl Vision or Lens Crafters

**Before you recycle:** Clean your glasses.

### **Grass Clippings**

Compost or leave on lawn to decompose, they cannot go in trash

### **Hangers for clothers**

If metal recycle, plastic to trash

### **Hazardous Waste**

Long Wharf HazWaste

### **Hearing Aids**

The Starkey Hearing Foundation ([starkeyhearingfoundation.org](http://starkeyhearingfoundation.org)) recycles used hearing aids, any make or model, no matter how old. Lions Clubs also accept hearing aids (as well as eyeglasses) for reuse; log on to [donateglasses.org](http://donateglasses.org) to find designated collection centers near you.

### **Ink Cartridges**

Both inkjet and laser printer cartridges come with recycling instructions in the package. Take them to Staples and get \$3 off your next cartridge purchase, or mail HP-brand cartridges back to HP. Cannon cartridges can be dropped off at FedEx

Best Buy, Staples, Office Depot, Target will take them

### **Kitchen Appliances**

Freecycle, passing onto a family member or friend, or donating your appliances is a great way to free up space in the kitchen pantry or cabinets. Most are metal and can be recycled. Before you recycle: Make sure you have all of the attachments, cords and manuals together in one bag or box.

Best Buy, Goodwill, Savers, Charities, Scrap Metal yards

## **Leaves**

Find out when your town picks them up and whether they need to be bagged or compost them yourself.

## **Light bulbs**

Incandescent, tungsten and halogen can go in trash.

Home Depot, Lowes and Ikea will take CFL bulbs

LED bulbs have heavy metal like arsenic and lead and 4', 6' & 8' shop bulbs have mercury so they go to

Haz-Waste Central May through October and some Transfer Stations

## **Mattresses and box springs**

Mattresses are made of recyclable materials, such as wire, paper, and cloth, but not all cities accept them for recycling. The Mattress Recycling Council has developed a [fact sheet for CT municipalities](#) and created a locator tool, [www.byebyemattress.com](http://www.byebyemattress.com), where residents can find a drop off location for their used mattresses. (Go to [earth911.org](http://earth911.org) to find out if yours does.)

Transfer Stations

## **Medical Supplies and Equipment**

Donate them to those in need such as Chariots of Hope, New England Assistance Technology Center at Oak Hill, and Hospital for Special Care.

Biomedical waste ("BMW") must be packaged, labeled, and marked as required by state regulations. Generators and permitted BMW transporters must deliver the waste to a permitted "BMW treatment facility" to store, treat, or dispose the waste. The methods of treatment/ disposal are as follows:

- Chemotherapy waste – by incineration;
- Pathological waste (i.e. human tissue, organs, body parts) – by incineration;
- Infectious waste (i.e. body fluids or items dripping with body fluids, discarded sharps, BMW generated from research, etc.) – either by incineration, discharge to a sanitary sewer, treatment by steam sterilization or other alternative treatment technology.

## **Mercury-Containing Products**

### **Thermometers, Thermostats, Fluorescent Lamps, Pressure Measuring Devices**

Mercury has a distinct, grayish-silver liquid in the bulb (if the liquid in the thermometer is

red, it is alcohol, not mercury, and may be disposed of in the regular trash). Items containing Mercury are accepted at household hazardous waste (HHW) collections.

### **Metals**

Alderman-Dow 203-562-1594, 358 Chapel St, New Haven

Sims Metals 203 777-2591, 234 Universal Drive, North Haven

### **Microwaves**

Goodwill Ind

### **Mirrors**

Goodwill, Charities, Savers

### **Needles and Syringes**

Put in container that says do not recycle, tape shut, and put in trash

### **Paper**

Paper should be recycled through your town or city's recycling program. Use a separate bin to collect paper products for recycling.

Shredding is done by Staples, the UPS Store on Whitney in Hamden, ProShred, New Haven Shredding and Records, Shred It

- **Envelopes with plastic windows:** Recycle them with regular office paper. The filters will sieve out the plastic, and they'll even take out the glue strip on the envelope flaps.
- **FedEx:** Paper FedEx envelopes can be recycled, and there's no need to pull off the plastic sleeve. FedEx Paks made of Tyvek are also recyclable (see below).
- **Goldenrod:** Those ubiquitous mustard-colored envelopes are not recyclable, because goldenrod paper (as well as dark or fluorescent paper) is saturated with hard-to-remove dyes. "It's what we call 'designing for the dump,' not the environment," says Matsch.
- **Jiffy Paks:** Many Jiffy envelopes—even the paper-padded ones filled with that material resembling dryer lint—are recyclable with other mixed papers, like cereal boxes. The exception: Goldenrod-colored envelopes must be tossed.
- **Padded envelopes with Bubble Wrap:** These can't be recycled. The best thing you can do is reuse them.
- **Tyvek:** DuPont, the maker of Tyvek, takes these envelopes back and recycles them into plastic lumber. Turn one envelope inside out and stuff others inside it. Mail them to Tyvek Recycle, Attention: Shirley B. Wright, 2400 Elliham Avenue

#A, Richmond VA 23237. If you have large quantities (200 to 500), call 866-338-9835 to order a free pouch.

- **Pendaflex folders:** Place these filing-cabinet workhorses in the paper bin. But first cut off the metal rods and recycle them as scrap metal.

### **Packing Materials**

Styrofoam peanuts cannot be recycled in most areas, but many packaging stores (like UPS and Mail Boxes Etc.) accept them. To find a peanut reuser near you, go to [loosefillpackaging.com](http://loosefillpackaging.com). Some towns recycle Styrofoam packing blocks; if yours doesn't, visit [epspackaging.org](http://epspackaging.org) to find a drop-off location, or mail them in according to the instructions on the site. Packing pillows marked "Fill-Air" can be deflated (poke a hole in them), then mailed to Ameri-Pak, Sealed Air Recycle Center, 477 South Woods Drive, Fountain Inn SC 29644. They will be recycled into things like trash bags and automotive parts.

The UPS Store in HAMDEN is a locally owned and operated small business and we care about all of our customers. Our staff has the knowledge and expertise to handle all of your mailbox, packaging, shipping, printing and other small business services and we are passionate about what we do. They will accept packing peanuts.

3000 WHITNEY AVE, HAMDEN, CT 06518 (203) 288-8685

### **Paint**

Oil paint goes to HazWaste Central

Latex paint go to local paint stores, Sherwin Williams, Grand Paint, PPG, North Haven Paint, Goody's (5 gallons per visit)

### **Pesticides**

HazWaste Central

### **Plastic Bags**

The best way to recycle plastic bags is to carry your own shopping bags so you never need to use them. However, sometimes a plastic bag is the only options. In that case, recycling plastic bags means reusing them around the house, and there are so many ways to use old plastic bags! Keep them on hand as lunch boxes in a snap, small garbage can liners, to carry returns to a store, cans and bottles for recycling. The list goes on and on.

However, **they clog up the recycling process and machines**, so **return them to Shop Rite, Stop and Shop and Price Rite, Wal-Mart, Target, Lowes, Whole Foods**, where there are bins to put them in.

Bring them to a participating retailer in the [Connecticut WRAP Program](#). Participating retailers will accept the following plastic bags or film for recycling: shopping bags, bread bags, newspaper bags, bubble wrap, packaging pillows, dry cleaner bags, and plastic shrink wrap used around cases of bottled water, paper towels, toilet paper and other commodities.

### **Prescription Drugs – Do not put in sink or toilet**

Check with your local pharmacy or police department, CVS, Walgreens and Rite-Aid have low cost disposal envelopes.

Remove label, add water or salt to make unusable, tape shut and put in non transparent bag and then in trash, not recycling.

The Starfish Project ([thestarfish-project.org](http://thestarfish-project.org)) collects some unused medications (TB medicines, antifungals, antivirals) and gives them to clinics in Nigeria. The organization will send you a prepaid FedEx label, too.

### **Propane Tanks**

Take to a filler or seller of tanks, use an exchange program rather than buying.

### **Satellite Dishes**

Give back to dish company, or a recycling center or Town Transfer Station

### **Shoes**

Donate shoes in decent condition to [solesforsouls.org](http://solesforsouls.org), a nonprofit that collects used footwear and distributes it to needy communities.

Nike's Reuse-a-Shoe program ([nikereuseashoe.com](http://nikereuseashoe.com)) accepts old sneakers (any brand) and recycles them into courts for various sports so kids around the world have a place to play. You can drop them off at a Nike store, other participating retailers, athletic clubs, and schools around the country (check the website for locations), or mail them to Nike Recycling Center, c/o Reuse-a-Shoe, 26755 SW 95th Avenue, Wilsonville OR 97070. If your sneakers are still in reasonable shape, donate them to needy athletes in the United States and around the world through [oneworldrunning.com](http://oneworldrunning.com). Mail them to One World Running, P.O. Box 2223, Boulder CO 80306.

Goodwill, Savers, Salvation Army, Habitat Restore, Vietnam Veterans, Christian, Community Action, Helping Hands, IRIS, Charities

### **Shower curtains and liners**

Most facilities do not recycle these because they're made of PVC. (If PVC gets in with other plastics, it can compromise the chemical makeup of the recycled material.)

### **Charities**

### **Shredded Paper**

Do **not** put in recycling bin. Give it to a professional shredder on a "shredding day event". **It clogs up recycling machines.**

### **Smoke Detectors**

Do not put in recycling or trash. There is a company, Curie Environmental Services, that accepts any brand of smoke alarm for recycling. For a nominal fee, the company will disassemble the smoke detector and recycle the components instead of disposing them as hazardous waste. The most common type of smoke detector is an ionization detector which contains a small amount of Americium 241, a synthetic isotope which emits both alpha and gamma rays.

### **Stereos and VCRs**

Visit [earth911.org](http://earth911.org) for a list of recyclers, retail stores, and manufacturers near you that accept electronics. Small companies are popping up to handle electronic waste (or e-waste) as well: [Greencitizen.com](http://Greencitizen.com) in San Francisco will pull apart your electronics and recycle them at a cost ranging from nothing to 50 cents a pound. And the 10 nationwide locations of [freegeek.org](http://freegeek.org) offer a similar service.

Best Buy, Goodwill and other charities and Freecycle.org

### **Thermometers and Thermostats contain mercury**

Mercury thermometers have a distinct, grayish-silver liquid in the bulb. They must be brought to a household hazardous waste (HHW) collection center in your area

HazWaste Central May to October

### **Tinfoil**

It's aluminum, not tin. So rinse it off, wad it up, and toss it in with the beer and soda cans.

### **Tires**

Town Transfer Stations or local tire retailers



## **TVs**

Best Buy will remove and recycle a set when it delivers a new one. Or bring old ones to Office Depot to be recycled. Got a Sony TV? Take it to a drop-off center listed at [sony.com/recycle](http://sony.com/recycle).

Flat screen are accepted at Goodwill and some charities and Freecycle.org

## **Videotapes, cassettes, and floppy disks**

These aren't accepted. Videotapes are a nightmare they get tangled and caught on everything. Instead, send tapes to the ACT ([actrecycling.org](http://actrecycling.org)) facility in Columbia, Missouri, which employs disabled people to clean, erase, and resell videotapes. You can also send videotapes, cassettes, and floppy disks to [greendisk.com](http://greendisk.com); recycling 20 pounds or less costs \$6.95, plus shipping.

Goodwill, Savers and other charities but ask first

## **Wheelchairs**

Go to [lifenets.org/wheelchair](http://lifenets.org/wheelchair), which acts as a matchmaker, uniting wheelchairs with those who need them. <https://www.wheelchairfoundation.org/>  
<http://wheelsofmercy.org/donate-wheelchair>

## **Wrappers (snack, chip, candy and cookie)**

Cannot go in recycle bin.

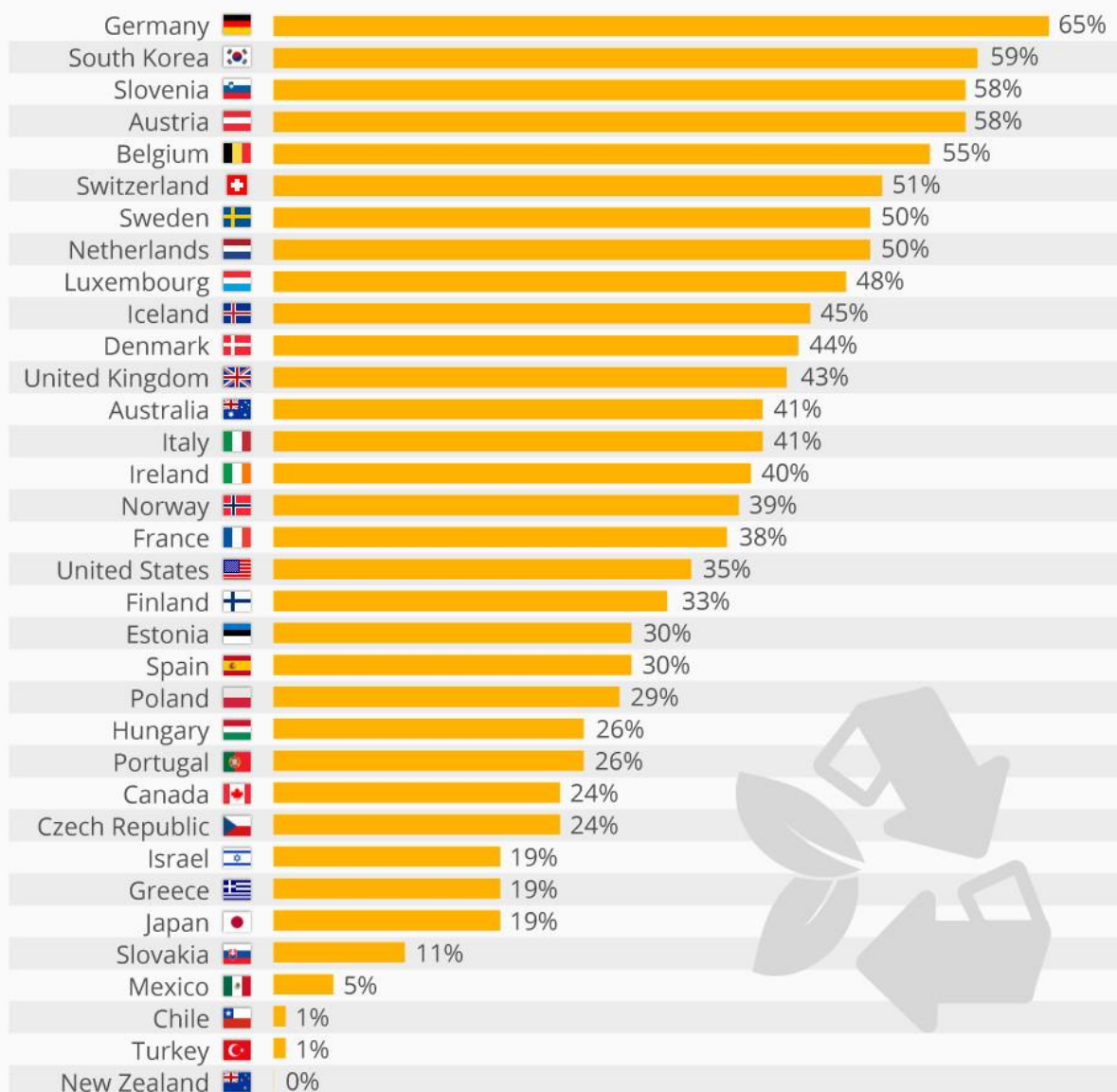
## **Xmas lights**

Ship your old lights to [holidayleds.com](http://holidayleds.com), Attention: Recycling Program, 120 W. Michigan Avenue, Suite 1403, Jackson MI 49201. The company will send you a coupon for 10 percent off its LED lights, which use 80 percent less energy and last 10 years or more. And they're safer, too. LEDs don't generate much heat, whereas incandescent give off heat, which can cause a dry Christmas tree to catch fire. **Transfer Station**

## D.

## The Countries Winning The Recycling Race

Recycled & composted waste as a share of total municipal waste in OECD countries (2013)



@StatistaCharts Source: OECD

statista

## E. Donation and Reuse Places Local

**DonationDropOff.org** was started as a sister site to [DonationTown.org](http://DonationTown.org). Unlike our sister site, our directory is comprised of charities that will accept donation drop offs. Our directory does not require that the charity offer free donation pick up service. All donation bins, donation centers, donation boxes and donation sites are welcome!

- Clothing—all sizes and styles for children, men and women • Clothing accessories – purses, belts, ties, wallets • Bedding, curtains, drapes, linens • Household items—small appliances, blenders, toasters, dishes, glassware, and home décor • Books—hardbacks, paperbacks
- Electronics: CD players, DVD players, radios, VCRs, iPods, cameras • Toys, skates, games, bikes • Jewelry • Antiques & collectibles • Records, tapes, CD's & DVD's • Sports equipment • Office supplies • Small Furniture—small chairs, nightstands, end tables, small bookshelves, small rugs • Automobiles, trucks, RVs, motorcycle, trailers, boats

**Donations that may or may not be accepted** • Computer equipment—computers, CPU's, monitors, printers, towers • Large Furniture • Stuffed Animals • Building materials • Baby items • Mattresses or box springs • Exercise equipment—stationary bikes, treadmills, universal sets, weights • Large appliances—washers, dryers, refrigerators • TV's—televisions, including big screen or console type

---

### **Goodwill Industries**

[www.goodwill.org](http://www.goodwill.org) 203 248-1600

2901 State Street, Hamden, CT and many other locations 7 days a week 9:00 to 6:00

All Clothing – Men's, Women's, Children's, Appliances – Small in Working Condition

All Books, Records/Tapes/CDs, DVDs/VHS, Bicycles and Toys, Computers  
Furniture – Good, Saleable, Housewares, Jewelry, Linens, Shoes (pairs)  
Vehicles-Cars, Boats, Motorcycles, Motor Homes (call 203-777-2000 ext. 253 for information)

---

### **Salvation Army**

<http://ctri.salvationarmy.org/SNE/NewHaven> 203) 624-9891

50 George Street, New Haven, CT 06511

For more information about donating goods, please call 860-527-8106 ext. 311 or email [Rick.Sustache@USE.SalvationArmy.org](mailto:Rick.Sustache@USE.SalvationArmy.org) or [Fleetmanager.arc@gmail.com](mailto:Fleetmanager.arc@gmail.com)

To learn more about ARCs, please click [here](#). To donate clothing, furniture, and household goods to The Salvation Army, visit [www.SATRUCK.org](http://www.SATRUCK.org) for drop-off locations (including collection bins). To have goods picked up, call 1-800-SATruck (1-800-728-7825). You may also donate at our store locations.

---

### **Habitat for Humanity Restore**

<http://newhavencountyrestore.org> 203-774-7560

286 South Colony Road  
Wallingford, CT 06492

Store Hours: Tuesday 10am-6pm, Wednesday 10am-6pm, Thursday 10am-6pm

Friday 10am-4pm, Saturday 10am-4pm

The ReStore sells gently used furniture, appliances, lighting, cabinets, vanities, and other household-related items. The proceeds are used to build Habitat homes in the Greater New Haven area. The ReStore provides an environmentally and socially responsible way to keep good, reusable articles out of the waste stream while providing funding for Habitat's community improvement work. [Restore@habitatqnh.org](mailto:Restore@habitatqnh.org)

---

### **Vietnam Veterans of America**

<https://pickupplease.org/contact-us/> 877 700-3086 or 800 775-8387

45 New Haven Ave, Milford

**CLOTHING**: Ladies, mens, kids, children's, baby, purses, belts, ties, wallets, dresses, shirts, pants, shoes. Virtually all types of Clothing, Shoes, and Accessories.

**HOUSEHOLD**: Dishes, glasses, silverware, small household appliances, bedding, linens, pillows, draperies, curtains, rugs, jewelry and cosmetics, comforters, home decor, baby items, art and frames.

**TOYS**: Stuffed animals, board games, dolls, action figures, and sports equipment.

**ELECTRONIC**: Stereo, radio, Xbox, Nintendo, Playstation, computers, laptops, monitors, DVD players, cameras, typewriters, and electronics. All types of small kitchen appliances.

**BOOKS**: Hardcover, softcover, fiction and non-fictions, e-readers.

**EQUIPMENT:** Exercise equipment: small weight benches, weights, sports gear, Sporting equipment: ski equipment, snowboards, helmets, baseball bats, basket balls, soccer equipment, tennis equipment, Tools: drills, saws, nail guns, Yard tools: lawnmowers, weed eaters, and handtrucks (no fuel of any type please!).

**SMALL FURNITURE:** Mirrors, nightstands, headboards, and office chairs.

**OTHER:** Bikes, musical instruments, small filing cabinets, garage sale leftovers, small appliances: microwaves, blenders, toasters, coffee makers, and almost anything else.

### **Christian Community Action**

<https://www.ccahelping.org/> 203.777.7848

168 Davenport Avenue, New Haven, CT 06519

Christian Community Action is an ecumenical social service organization that expresses faithful witness by providing help, housing, and hope to those who are poor in New Haven.

**Donate items:** We accept gently used clothing items, canned foods, grocery items, and toys throughout the year. Please stop by our main office at 168 Davenport Avenue, New Haven to drop off items. Here is a thorough list of items that are always helpful to CCA families on they work toward self-sufficiency. **Donate Furniture:** You can donate furniture through one of our partners, [Helping Hands](#) or call us at (203) 777-7848 for pick-ups

**Food Pantry** • Non-perishable food items

**Toiletries** • Toothpaste, Toothbrushes  
Body wash, Shampoo, Deodorant  
Body Lotion

**Cleaning Items** • Laundry detergent  
Fabric Softener Air fresheners Household  
cleaning supplies

**Bedding** • Pillows Throws Blankets  
Twin/Full bed linen Twin/Full comforters  
Zipped mattress protectors

**Houseware** • Pots/pans

Silverware Plates Cups  
Mold resistant shower  
curtains Waste baskets

**Dress for Success** •

Menswear in various sizes  
Womenswear in various  
sizes  
Briefcases

**Back to School  
Supplies**

• Uniform Vouchers  
Shoes/Sneakers

**Job Readiness •** Resume Paper Portfolio Loose-leaf paper  
 Folders Crayons Pencils  
 Page protectors Client Assistance Funds Rulers Markers Backpacks

**Recreational Items •** Board Games  
 (ages 2-5)

### **Helping Hands**

[www.helpinghandsctfb.com/](http://www.helpinghandsctfb.com/)

203-782-4800

334 Boston Post Road, Orange, CT 06477 Monday - Friday 9:30 to 8:00

Saturday 9:30 to 6:00 Sunday 10:00 to 5:00

Mattresses, frames and box springs, Dressers, Nightstands, Sofas and loveseats,  
 Desks

Tables (kitchen, dining, end, sofa, etc.), Chairs (kitchen, upholstered, etc.), Lamps  
 (floor, table top), Large appliances (refrigerators, washers, dryers, stoves, microwaves),  
 Television sets (must be cable-ready and less than 10 years old, Sets of pots and pans,  
 dishes, and flatware (utensils) Area rugs, Baby items (high chairs, strollers, carriages,  
 etc.), Blankets and bed linens, Clothes, Jewelry, Knick-knacks, Books, Toys and Stuffed  
 Animals, Fabric, yarn and sewing notions, Artwork, Antiques **We DO NOT ACCEPT:**  
 Computers, Automotive items, Car Seats, Cribs, Platform beds, waterbeds, king size  
 beds, Food, Items in very poor condition or in need of repair, Hutches, Head/ Foot  
 Boards, Hospital Beds, Wheelchairs ,Commodes, Shower Benches, Lamps without  
 Shades, Exercise Equipment

### **Intergrated Refugee and Immigrant Service IRIS**

<http://www.irisct.org/>

**Furniture items:** Dressers, Kitchen tables and chairs, End/coffee tables, Rugs  
**Household items:** Kitchen supplies: pots, pans, silverware, dish sets, can openers (preferably manual), etc. Linens (clean, new or like-new): towels, sheets, blankets, comforters, tablecloths, washcloths Curtains, Alarm clocks, Fans, Strollers, Microwaves, Lamps  
**New Hygiene Items:** Deodorant, soap, shampoo & conditioner, toilet paper, tissues, razors and shaving cream, new combs and brushes, small travel sewing kits  
**Cleanings Items:** Brooms, mops, garbage cans, roll/box of garbage bags, bleach/bathroom cleaner, dish soap, laundry detergent, sponges, cleaning detergent (Pine-Sol, etc.)

**Miscellaneous:** Cloth shopping bags, Light bulbs, plungers, notebooks and pens, Bagged vacuum cleaners, Bicycles, Umbrellas, Winter blankets/quilts, any size in good, clean condition, Thermal underwear (new, any size, especially adult), Medical kits, with first-aid supplies and over-the-counter medicine, 9 Volt batteries (for smoke alarms), AA batteries (for alarm clocks) Musical instruments

If you have furniture or household goods to donate, please contact our Housing and Donations Coordinator Brittany Hall and Bethany Delahunt at [donations@irisct.org](mailto:donations@irisct.org). In your email, please include photos, descriptions (dimensions) and pickup/contact info

---

### **Savers** – thrift store

<https://stores.savers.com/ct/orange/> (203) 891-0789

130 Boston Post Rd Orange, CT 06477

**Donation Drop Box** North Haven Crossing 410 Universal Drive, North Haven, CT 06473

(844) 799-2050

**Accessories** Hats, mittens, scarves, ties, socks, purses, wallets, backpacks, bags

**Clothing & shoes** Men's, women's, children's

**Electrical** Small electrical toasters, radios, power tools, irons, blenders, mixers, stereos, CD players, speakers, DVD and VCR players, table lamps, floor lamps, humidifiers

**Exercise & outdoor** Bicycles, golf accessories, garden tools, sports equipment, exercise equipment, skis

**Kids** Toys, games, puzzles, stuffed animals

**Kitchen** Pots, pans, utensils, china cups, vases, dishes, cutlery, glassware, silverware, stemware

**Knick-knacks** Jewelry, crafts, mugs, candles, pictures/frames, baskets, ornaments, hand tools

**Media** Hardback and paperback books, magazines, records, tapes, CDs, videos, DVDs, computer software

**Small furniture** All chairs, tables (dining, kitchen, coffee, end, computer, night stand, patio), dressers, hutch, armoire, bookcase, cabinets, entertainment centers

**Other textiles** Bed/bath towels, sheets, blankets, pillows, curtains, tablecloths

---

## **Big Bothers Big Sisters**

<http://www.bbbsswct.org> 877 399-2570 Does do Pick-ups

Donation bins – 277 State St North Haven, Parkway Plaza at 1969 Dixwell in Hamden, North Haven Crossing at 410 Universal Drive North in North Haven

Clothing (men, women, children, all types and sizes), Clothing accessories, Shoes (all kinds), Books, All bedding items (no mattresses please), Draperies and curtains, Housewares and furniture, Toys, games and tools, Radios and small appliances (no televisions please)

**New Reach** <http://newreach.org/> 203.492.4866

153 East Street, New Haven, CT 06511

New Reach inspires independence for those affected by homelessness and poverty through a continuum of housing and support using the most innovative and progressive methods.

Our vision is that all children, families and individuals in Connecticut find a safe, secure, affordable home with the services and supports necessary to achieve a fulfilling, self-reliant life.

## **EcoWorks**

<https://ecoworksct.org/> 203 498-0710

262 State Street New Haven, Ct 06510

EcoWorks runs a creative reuse center with a re-Boutique gift shop of upcycled and repurposed goods made by CT artists and offers classes and workshops. We sell low-cost art supplies in our reuse center to support teachers, artists and others seeking to be more creative and artistic! #Volunteer Powered

**New England Reuse** - Christian Kling owner

[nereusect@gmail.com](mailto:nereusect@gmail.com), [www.nereuse.us](http://www.nereuse.us), 203-230-2647

400 Sackett Point Road, North Haven, CT 06473 M-F 9:00 to 5:00 SA 9:00 to 3:00



We use the materials salvaged from a deconstruction site such as an old home or barn to build new furniture, sheds and houses. This process is not only Eco-Friendly but provides high quality materials to you at an affordable cost.

---

**Urban Miners** - Joe DeRisi owner

<http://www.urbanminers.com/> Phone 203-287-0852

72 Blatchley Avenue, New Haven at Fairhaven Furniture;

Summer Hours: **Fridays & Saturdays 10 -3**

Formed out of a commitment to environmental and social sustainability, Urban Miners salvages building materials and household goods to pass on to you at affordable prices.

We also do deconstruction: taking apart entire structures for those who seek a partial or full alternative to demolition. Often we can save up to 80% of the building materials.

---

**Rainbow Recycling** (203) 865-6507

810 State St, New Haven, CT 06511

**Neighborhood Housing Services of New Haven**

<http://www.nhsofnewhaven.org/> (203) 562-0598

333 Sherman Ave, New Haven, CT 06511 Hours: Mon- Fri 9AM - 5PM

**Junkluggers**

[www.junkluggers.com](http://www.junkluggers.com) 800-584-5865

Milford, CT

We'll Lug it Out! The Junkluggers offers full service eco-friendly junk removal for your home or business including offices, retail locations, construction sites, and more. Aside from select hazardous materials, we can lug away just about anything!

---

**Craigslist** for sale or for Free listing <https://newhaven.craigslist.org/>

**Freecycle** <http://www.freecycle.org> to put anything up online in your area that is free for someone else to have.

## F. Recycle Places – Retailers

### Home Depot

1873 Dixwell Ave Hamden, CT 06514 & 111 Universal Dr North Haven, CT 06473

Materials accepted: Cell Phones Car Batteries CFL light bulbs, Lead-acid Batteries - Non-automotive Lithium-ion Batteries Nickel-cadmium Batteries

### Lowe's

115 Foxon Blvd New Haven, CT 06513

Materials accepts Lowe's added a first-of-its-kind recycling center near store entrances to increase the collection of batteries and also offer customers a free and easy way to properly dispose of cellphones, CFLs and plastic shopping bags; materials that otherwise could be potentially harmful to the environment. Paint?

### Office Depot

Office Depot's [recycling program](#) is perhaps the simplest and easiest of all the big boxes. The company offers boxes of three different sizes that you can load up with a variety of tech gadgets and drop off at any Office Depot store; the small, medium and large boxes go for \$5, \$10 and \$15, respectively. The devices are then sent off to a recycling plant, where they are separated, sorted and recycled. Office Depot also provides free in-store recycling for cell phones, rechargeable batteries and ink & toner cartridges

### Staples

Monday to Friday 8am to 9pm, Saturday 9am to 9pm and Sunday 10am to 6pm

[www.staples.com/recycle](http://www.staples.com/recycle)

(203) 407-4250

2335 Dixwell Avenue

Hamden, CT 06514

Staples accepts a wide array of office electronics for free recycling drop off at store locations nationally. It will also reward you for recycling ink and toner cartridges cell phones and rechargeable batteries.

Accessories/adapters/cables, All-in-one computers, Cable/satellite receivers, Calculators, Camcorders, CD/DVD/Blu-ray players, Computer speakers, Connected

home devices, Copiers (Desktop), Cordless phones, Desktop computers, Digital cameras, eReaders, Fax machines (Desktop), Flash drives, Gaming consoles/handhelds, GPS devices, Hard drives, iPod®/MP3 players, Keyboards & mice, Laptops:, Mobile phones:, Modems, Monitors (LCD, LED, CRT), Printers & multifunction devices (Desktop), Routers, Scanners (Desktop), Shredders, Small servers, Stereo receivers, Tablets:, UPS/battery backup devices, Video streaming devices (Apple TV®, Roku Player, etc.), Webcams

Electronic items should be brought to the customer service desk for recycling. There is a limit of 6 electronic items accepted per customer per day. Staples cannot accept appliances, televisions, floor model printers/copiers, stereos, home audio speakers or certain other household electronics.

---

### **Sherwin Williams, Grand Paint, PPG, North Haven Paint, Goody's (5 gallons per visit)**

PaintCare sites accept house paint and primers, stains, sealers, and clear coatings (e.g., shellac and varnish) but we do not accept aerosols (spray cans), solvents, and products intended for industrial or non-architectural use. The products we accept are referred to as "PaintCare Products" or "architectural paint" and they must be in containers that are no larger than 5 gallons in size. Paint must be in its original container and the container must have a label and a secured lid. We cannot accept open or leaking cans. Please review the following detailed list to find out what can be accepted, prior to dropping off your paint.

---

### **Next Level for Recycling**

<http://www.nlr-green.com/> 860-292-1992

East Windsor, CT

Formed in November 1994 NLR, is a Connecticut corporation offering turnkey lamp recycling and universal waste recycling services to a broad group of companies and institutions including private and government office buildings, industrial complexes, hospitals, insurance companies and other institutions, commercial establishments, and residential homes.

---

### **Best Buy**

#### **Accepted at Best Buy Stores**

Recycling is intended for residents only. Products from businesses and organizations, or items that present a health or safety hazard are not accepted.

**Products We Recycle for Free** Limit three items per household per day.

- - **Battery Backups (UPS)\* Cables and Connectors\* DirecTV Set-Top Box/Converters DVD/Blu-ray Player Headphones In-Dash/Overhead DVD Internet TV Set-Top Box/Satellite Receivers Portable DVD\* Portable Media Players Power Inverters\* Projectors Remotes/Surge Protectors TiVO TV Antennas less than 3' long VCRs Wall Mounts**

**Products We Recycle for a \$25 Fee per Item** Limit two TVs per household per day.

- - **Tube TVs smaller than 32"**
- - **Flat Panel TVs: LCD, Plasma, LED smaller than 50" - Portable TVs**

Limit three items per household per day.

- - **All-in-One Computers, Battery Backups (UPS)\* Cables and Connectors\* CD/DVD Drives\*Computer Speakers/Controllers Desktops Hard Drives\* Ink/Toner Cartridges Laptop Batteries\* Laptops\* Memory\* Mice and Keyboards Modems/Routers/Hubs\* Web Cams Netbooks\* Printers/Scanners/Fax Sound/Video Cards\* Tablets\* E-Readers\***

**Products We Recycle for a \$25 Fee per Item**

Limit two monitors per household per day.

- - **Monitors**

**Stores in Connecticut, Illinois and Pennsylvania do not accept monitors for drop-off.**

- - **Calculators Chargers\* Hands-Free Headsets\* Landline Phones Mobile Phones\*Rechargeable Batteries\* Recorders Shredders Two-Way Radios Wireless Broadband\***
- - **Stick Vacuums Fans Robot Vacuums Upright/Canister Vacuums**

**Haul-Away Options**

We will haul away these major appliances from your home for \$14.99 when a replacement product is delivered by Geek Squad® or Best Buy Home Delivery. Then we will make sure it is properly and safely recycled. A \$14.99 service fee will be charged for each appliance that is relocated within the delivery address. Stand-alone pickup without a qualifying appliance purchase is \$99.99.

- - **Cooktops Dishwashers Dryers Freezers Ice Makers Ranges/Stove and Range Hoods Refrigerators Wall Oven Washers**

Accepted at Best Buy Stores for Free

Limit three items per household per day. Recycling is intended for residents only. Products from businesses and organizations, or items that present a health or safety hazard are not accepted.

- - **Ink and Toner**

### **Recycle and Save on Ink & Toner**

Recycle your old ink or toner cartridges at your local Best Buy store and save \$2 in Recycle Rewards on your next in-store purchase of \$40 or more.

Accepted at Best Buy Stores for Free

Limit three items per household per day. Recycling is intended for residents only. Products from businesses and organizations, or items that present a health or safety hazard are not accepted.

- - **Battery Backups (UPS) Button Batteries Cellphone Batteries Laptop Batteries Rechargeable Batteries**

Products with an asterisk (\*) are also accepted at Best Buy Mobile Stores.



Not Accepted

- - **Alkaline (Single-Use) Batteries Car/Marine Batteries (Lead Acid) Other Wet Cell Batteries**
- 

### **Accepted**

- - **Alarm Clock Amps and Effects Audio Mixers/DJ Turntables CD Players/Recorders CD/Cassette Players Chargers\* Home Audio Networking Home Recording Interfaces HTIB/Soundbars/Speakers iPods/Other MP3 Player MP3 Speakers Speaker Systems Personal Recorders Receivers/Boomboxes Satellite Radio Turntables**
- - **Brooms/Stick Vacuums Cables and Connectors\* Curling Iron Fans Hair Dryers Hair Straighteners Monitoring Systems Pedometers and Heart Monitor Robot Vacuums Upright/Canister Vacuums Weather Stations**
- **E-Readers\* - Cables and Connectors\* Controllers and Keyboards Portable Gaming\* Portable LCD Screens Video Game Console**
- 
- **PICKUP**
- **Pickup and haul-away can be scheduled for a \$99.99 fee without a qualifying purchase for up to two appliances or two TVs or one of each.**

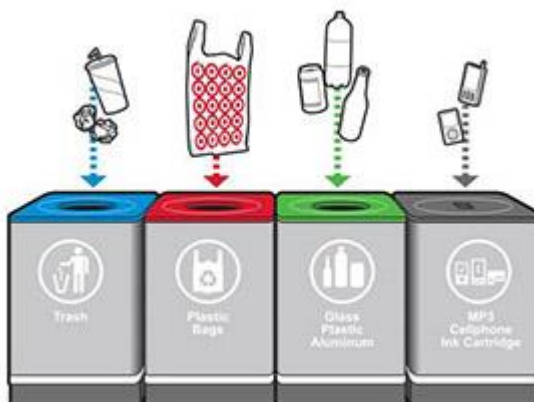
Please contact your local store for details and to schedule your pickup time.

- **RECYCLING**
- **Best Buy will make sure items are properly and safely recycled by our licensed, third-party recycling partners. The recyclers ensure that the various commodities are sent to end markets to be recycled and repurposed into new products.**

## Target

For those with limited recycling options, Target is a resource to recycle plastics, aluminum, glass and electronics.

In April 2010, Target celebrated Earth Month in a big way: The nationwide retailer introduced recycling stations in all of its 1,740 stores. Target is a company with a history of giving and of concern for the environment. For example, its [garment-hanger recycling program](#) has saved millions of plastic and metal hangers from going into landfills. The introduction of companywide recycling stations marks the first time recycling services had been available to Target's customers. It is another way Target is trying to reach out



and help its local communities.

These recycling kiosks give Target customers an easy way to recycle cans, glass, plastic bottles, plastic bags, MP3 players, ink cartridges and cell phones right in their local store. The goal of the program is to extend the company's recycling efforts, and so far, the program has kept thousands of tons of recycled materials from landfills. In 2011, Target collected and recycled more than 1,000 tons of plastic, glass and aluminum bottles and cans; 7,000+ tons of shrink-wrap and plastic bags; and more than 7 million pounds of electronics. Target's recycling program ends up picking up the slack in many areas that either don't have curbside recycling at all or have a deficiency in their municipal recycling program. *To find out more about Target's recycling programs, visit [target.com](http://target.com). To find a Target location nearest you, visit our [recycling location search](#).*

## **G. Recycle Places – Local Commercial & HazWaste Central**

### **Carting & Hauling**

Johns Refuse (Global Environmental) 877-368-4767 or (203) 234-7311 New Haven, CT

#### **JOHN'S REFUSE & RECYCLING, LLC**

<http://www.johnsrefuse.com/> 203-484-0281  
1002 Middletown Avenue Northford, Connecticut 06472-1376

Single Stream Recycling in CT involves the following materials:

Cardboard White Office Paper Envelopes Mixed Paper Scrap & Shredded Paper  
Magazines Catalog Newspaper Ads & Post Cards Clean Milk Cartons Clean Drink  
Boxes Cereal Boxes All Plastic #'s 1-7 Clean Cans Aluminum Pots, Pans, Foil & Cans  
Glass of All Colors

#### **All American Refuse**

<http://www.aawllc.com/> 203-389-3600

19 Wheeler St, New Haven, CT 06512

All American Waste is proud to offer Single Stream Recycling to all of our curbside refuse/recycling customers, making it easy for you to recycle easily and effectively at home. This innovative sorting technology at our Murphy Road Recycling/Automated Material Handling facilities allows residents to put all of their recyclables- plastic, paper, metal and more, into a single recycling bin. This approach allows us to recycle more materials than ever before, saving valuable resources and minimizing environmental impact.

Acceptable- Magazines, Paper Bags, Junk Mail, Office Paper, Phone Books, Newspapers, Cardboard (flattened), Paperboard, Plastics (#1-7), Aluminum (cans, foil, pans), Metal Cans/Containers, Glass Bottles/Jars

Unacceptable items: No Plastic Bags/Shrink-wrap or Cellophane Allowed, No Plastic pails or paint cans (example construction pails), Paper: Wax paper, soiled paper, soiled napkins & paper towels, pet food bags & dryer sheets (example pizza boxes), Plastics: Any plastic that doesn't have a number on it. (Examples - garden hose, trash and ziplock bags, cereal box bags, bubble wrap, clear plastic wrap, potato chip bags, single cheese wrappers, soiled plastic bottles and bags), All Styrofoam: While it may seem recyclable, there is not enough material left after breaking it down to make a new product. TIP - bring your own container to avoid having to use Styrofoam, Aluminum: Soiled aluminum foil, soiled tin cans, no frying pans, Cardboard: Soiled pizza boxes and

soiled cardboard. (Examples - grease, mold, paint)\_Glass: Windowpane glass, plated glass (windshield glass)

---

## Scrap Metal and Junk

### Alderman-Dow

<http://alderman-dow.com/> (203) 562-1594

358 Chapel St, New Haven, CT 06511 Hours: · 7AM–5PM

Top prices paid for:

[Copper](#) [Aluminum](#) [Steel & Iron](#) [Electrical Wire](#) [Bronze](#) [Lead](#) [Tin](#) [Pewter](#) [Nickel Alloys](#)  
[Stainless Steel](#) [Batteries](#) [Tungsten Carbide](#) [Automotive Scrap](#) [Scrap Film](#) [Computer Scrap](#) [Tool Steel](#) [Contractors' Scrap](#)

### Sims Metals

<http://www.simsmm.com/> (203) 777-2591

234 Universal Drive, North Haven, CT 06473 Hours: 6:30AM–4PM

Materials Accepted - Plumbing Scrap Copper pipes & fittings Refrigerators  
 Refrigeration systems Water supply systems Heat exchanger Water meters Water  
 heater Materials Accepted - Electric Scrap Wire Circuits, switches Circuit boxes  
 Transformer Ballast Lighting and wire devices Air conditioners Materials Accepted -  
Vehicle Scrap & Parts End-of-life cars and vehicles Trailers Auto parts Trucks and  
 vans Wheel rims Tractors

Materials Accepted - White Goods Washing machines Dryers Dishwashers  
 Refrigerators Freezers - commercial and residential Materials Accepted -  
Heating/Cooling Commercial and residential air conditioners Window air conditioners  
 Air handler Heat pump Air conditioner Heat exchanger Water heater

---



## **Transfer Stations in Local Towns**

**Bethany** <http://bethany-ct.com/> 40 Peck Rd [\(203\) 393-2100](tel:2033932100)

755 Amity Road

Wednesday: 8:00 a.m. – 6:00 p.m. Friday and Saturday: 8:00 a.m. – 4:00 p.m.

**Branford** <http://www.branford-ct.gov/SolidWaste> 203 483-8641

747 East Main Street Monday–Friday: 7:15 a.m. – 1:30 p.m. Saturday: 7:15 a.m. – 2:30 p.m.

**Cheshire** <http://www.cheshirect.org/trash-recycling-and-energy/disposing-of-unacceptable-items/>

1286 Waterbury Road

**East Haven** <https://www.townofeasthavenct.org/public-services/pages/landfill-information-and-schedule> **Friday and Saturday from 8:30AM to 3:00PM**

3303 Commerce Street 203–468–3329

**Guilford/Madison** <http://www.madisonct.org/398/Guilford-Madison-Transfer-Station>

1900 Boston Post Road [203203–468–3329](tel:2032034683329) [453-8095](tel:2034538095) M to SA 7:00 to 3:30

**Hamden** <http://www.hamden.com/recycle>

231 Wintergreen Avenue [203\) 387-2435](tel:2033872435) Monday To Saturday 7AM–3PM

contact Haley Starvaggi, Hamden's Solid Waste and Recycling Coordinator, at (203) 287-7021 or [hstarvaggi@hamden.com](mailto:hstarvaggi@hamden.com)

**Milford** <http://www.ci.milford.ct.us/public-works/pages/transfer-station>

755 Oronoque Road [\(203\) 874-1599](tel:2038741599) Mon to Sat 7AM–3PM

**New Haven** <https://nhswra.com/transfer-station-facility-rule>

260 Middletown Road [\(203\) 946-7700](tel:2039467700) Mon to Sat 9:00 to 12:00

Pierre Barbour

Executive Director, New Haven Solid Waste & Recycling Authority

14 Trumbull Street

New Haven, CT 06511

Phone: 203-691-5374 Fax: 203-691-5990

Email: [pbarbour@nhswra.com](mailto:pbarbour@nhswra.com)

[New Haven Waste & Recycling Authority Website](https://nhswra.com/transfer-station-facility-rule)

**North Haven**

[http://www.northhavenct.gov/government/town\\_departments/departments\\_\(e\\_-\\_l\)/field\\_operations/recycling/recycling\\_center.php](http://www.northhavenct.gov/government/town_departments/departments_(e_-_l)/field_operations/recycling/recycling_center.php)

1122 Universal Drive & 90 Elm St [\(203\) 239-5321](tel:2032395321) M to SA 8-11:45

**Seymour**

116 Silvermine Road (203) 735-5838

**Wallingford** <http://www.town.wallingford.ct.us/>

25 Pent Road 203 678-1877 M,T,T,F 8:30-4:00 Sa 7:00-3:00

**Shredding Companies**

Shredding is done by Staples, the UPS Store on Whitney in Hamden,

ProShred, New Haven Shredding and Records, Shred It

**ProShred**

<https://www.proshred.com/connecticut> (203) 303-8500

801 N Main Street Ext, Wallingford, CT 06492

**New Haven Shredding and Records**

<http://www.newhavenshredding.com/> (203) 493-3595

205 Church St, New Haven, CT 06510

Shred It

<https://www.shredit.com/en-us/home> (203) 800-4317

2 Universal Drive, North Haven, CT 06473

---

**HazWaste Central** [www.rwater.com/hazwaste](http://www.rwater.com/hazwaste) or call 203-401-2712

90 Sargent Drive, New Haven **May to October** Email: [ask.hazwaste@rwater.com](mailto:ask.hazwaste@rwater.com)

Household hazardous waste comes from everyday products used in your home, garage, yard or garden. These products are corrosive, flammable, toxic or reactive. No worries... there's a place for your waste: HazWaste Central. HazWaste Central serves residents in the following towns: Bethany, Branford, Cheshire, East Haven, Fairfield, Guilford, Hamden, Madison, Meriden, Milford, New Haven, North Branford, North Haven, Orange, Wallingford, West Haven, Woodbridge.

#### Kitchen & Bathroom

Aerosols, Bathroom Cleaners, Disinfectants, Floor Care Products, Metal & Furniture Polish, Nail Polish Remover, Oven & Drain Cleaners, Tile Cleaners, Toilet Bowl Cleaner

#### Garage & Workshop

Antifreeze, Auto Batteries, Auto Body Repair Products, Brake & Transmission Fluid, Bug Sprays, Gasoline, Latex & Oil-Based Paints, Other Oils, Cleaners, Paint Thinner & Stripper, Used Motor Oil, Varnish

#### Garden & Miscellaneous

Artists' Paints, Batteries, Chemical Fertilizer, Dry Cleaning Solvents, Fiberglass Epoxy, Fluorescent Bulbs (Including CFL Type), Fungicides Herbicides & Insecticides, Mercury & Mercury-Containing Items, Moth Balls, Pesticides, Photographic Chemicals, Rat Poison Small (1 Pound), Propane Cylinders, Swimming Pool Chemicals

Do not mix or remove items from their original package

### **Working with Communities for the Safe and Free Disposal of Household Chemicals**

Household hazardous waste comes from everyday products used in the home, garage, yard or garden. By definition, they are corrosive, flammable, toxic or reactive. These products can be disposed of for free at HazWaste Central. HazWaste Central helps protect the water resources in Greater New Haven, while providing cost-effective municipal services. Because the chemicals are safely collected, the land and important waterways are not polluted. A visit to HazWaste Central is quick and easy. Participants never have to leave their cars, and the waste is off-loaded by professionals. [Here is a list of items that are accepted at HazWaste Central.](#)

### **When can I come to HazWaste Central?**

If you live in a HazWaste Central community, (the towns are listed below), you can bring your household hazardous waste to us on Saturday mornings only, from 9:00 a.m. until noon, from mid-May through the end of October. Please do not bring waste to the Center at any other time. [2017 HazWaste Central Schedule](#)

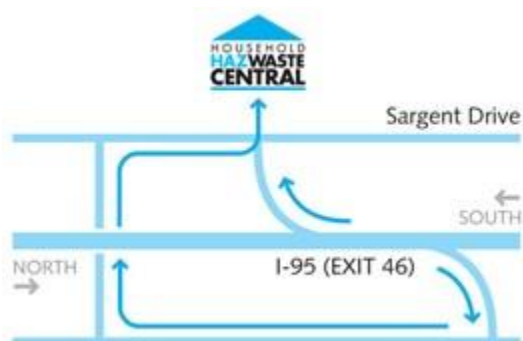
## Local Disposal Options

Local disposal options may be available for batteries, compact fluorescent light bulbs and paint. Please check with your public works department or local transfer station or the following resources:

- Batteries: call 1-800-8-BATTERY or log on to [www.call2recycle.org](http://www.call2recycle.org) (excluding alkaline and auto batteries).
- Compact Fluorescent Light (CFL) Bulbs: call 1-800-CLEANUP, or log on to [www.earth911.com](http://www.earth911.com)
- Paint: log on to [www.paintcare.org](http://www.paintcare.org) and visit the Connecticut portion of the site to find a drop-off location for household paint.

## What are Satellite Collections?

At satellite collections, we come to specified towns and set up special collection sites, but our main location (right behind the Regional Water Authority's headquarters, 90 Sargent Drive, New Haven) is open to residents of all the listed towns every Saturday from mid-May through the end of October with the exception of major holidays (Memorial Day, Independence Day and Labor Day).



### Where?

We're located right behind the Regional Water Authority's headquarters, 90 Sargent Drive, New Haven, (that's just south of I-95 exit 46-Long Wharf—a short distance from the junction of I-91 and the Connecticut Turnpike). Click on the map to the right for a larger version.

## Who's Eligible?

HazWaste Central is free to residents of Bethany, Branford, Cheshire, East Haven, Fairfield, Guilford, Hamden, Madison, Meriden, Milford, New Haven, North Branford, North Haven, Orange, Wallingford, West Haven and Woodbridge.

## User Questionnaire

Please download and fill out our [user questionnaire](#) form prior to coming to drop off your household hazardous waste.

### **Small Business Information**

Small businesses, those with Conditionally Exempt Small Quantity Generator status (CESQG's), can now participate in the HazWaste Central Program BY APPOINTMENT ONLY. There are requirements for delivery.

Download the [Small Business CESQG Information Packet](#).

Download the [CESQG Small Business Form](#). Download the [CESQG Municipal Form](#).

### **What Happens to the Waste?**

An interesting thing happens as soon as we accept your household hazardous waste. Once it is in our hands, your old household products become hazardous waste. They then fall under stringent regulations for handling, storage, transportation and disposal of hazardous materials of Connecticut's Department of Energy and Environmental Protection and the U.S. Environmental Protection Agency.

Clean Harbors Environmental Services of New Britain, CT removes household hazardous wastes from your car, identifies it, enters it into a record keeping system and packs it into a 55-gallon drum of similar wastes.

They transport the drums to federally approved disposal sites. Some materials from HazWaste Central are incinerated in special facilities approved for disposal of hazardous wastes. Others are placed in special landfills. When possible, materials from HazWaste Central are recycled or reused.

### **Want to Volunteer?**

Volunteering at HazWaste Central is one way you can act locally and think globally.

Volunteers help at the Center by collecting information from people as they drive into the site. Volunteers do not come in contact with, remove or handle any of the wastes brought to HazWaste Central.

Call us at 203-401-2712 for information about becoming a HazWaste Central Volunteer or to sign up to help at your community's next volunteer day at HazWaste Central.

### **Who's Behind HazWaste Central?**

The Regional Water Authority worked with the South Central Regional Council of Governments to form HazWaste Central in 1989. Our Center grew out of the RWA's interest to protect the region's water resources and the Council's concern for cost-effective municipal services. HazWaste Central now serves a combined population of over 535,000.

### **What Has HazWaste Done for the Environment?**

Since 1990, HazWaste Central has collected over one million gallons of waste from more than 113,000 households.



# A Guide to Recycling

Connecticut now has a universal list of what belongs in your recycling bin and what doesn't. All items should be **empty, rinsed, clean** and **open**. Do **not** shred, box, bag or bundle. To learn more, go to [RecycleCT.com](http://RecycleCT.com)

## What's **IN**?

## What's **OUT**?

### PAPER

- Cardboard & boxboard
- Food & beverage cartons
- Junk mail
- Magazines & newspaper inserts
- Newsprint
- Office paper
- Pizza boxes

- Gift wrap & gift bags
- Ice cream containers
- Paper cups (hot & cold)
- Shredded paper
- Take-out food containers
- Tissue paper

### GLASS

- Beverage bottles & jars
- Food bottles & jars

- Ceramic mugs & plates
- Drinking glasses

### METAL

- Aerosol containers (food grade only)
- Aluminum foil
- Cans & bottles
- Foil containers
- Metal lids from cans & bottles

- Aerosol containers (deodorizers, cleaners, pesticides, etc.)
- Foil tops from yogurt containers
- Paint cans
- Pots & pans
- Small pieces of scrap metal
- Spiral wound containers

### PLASTIC

- Plastic bottles (with or without caps attached)
- Plastic containers, tubs & lids
- Plastic one-use cups (no lids, no straws)

- Loose bottle caps
- Plastic bags & wrap
- Plastic plates, bowls & utensils
- Prescription bottles
- Single-use coffee containers
- Styrofoam cups, containers & packaging peanuts
- Water filters



© 2017 RecycleCT Foundation

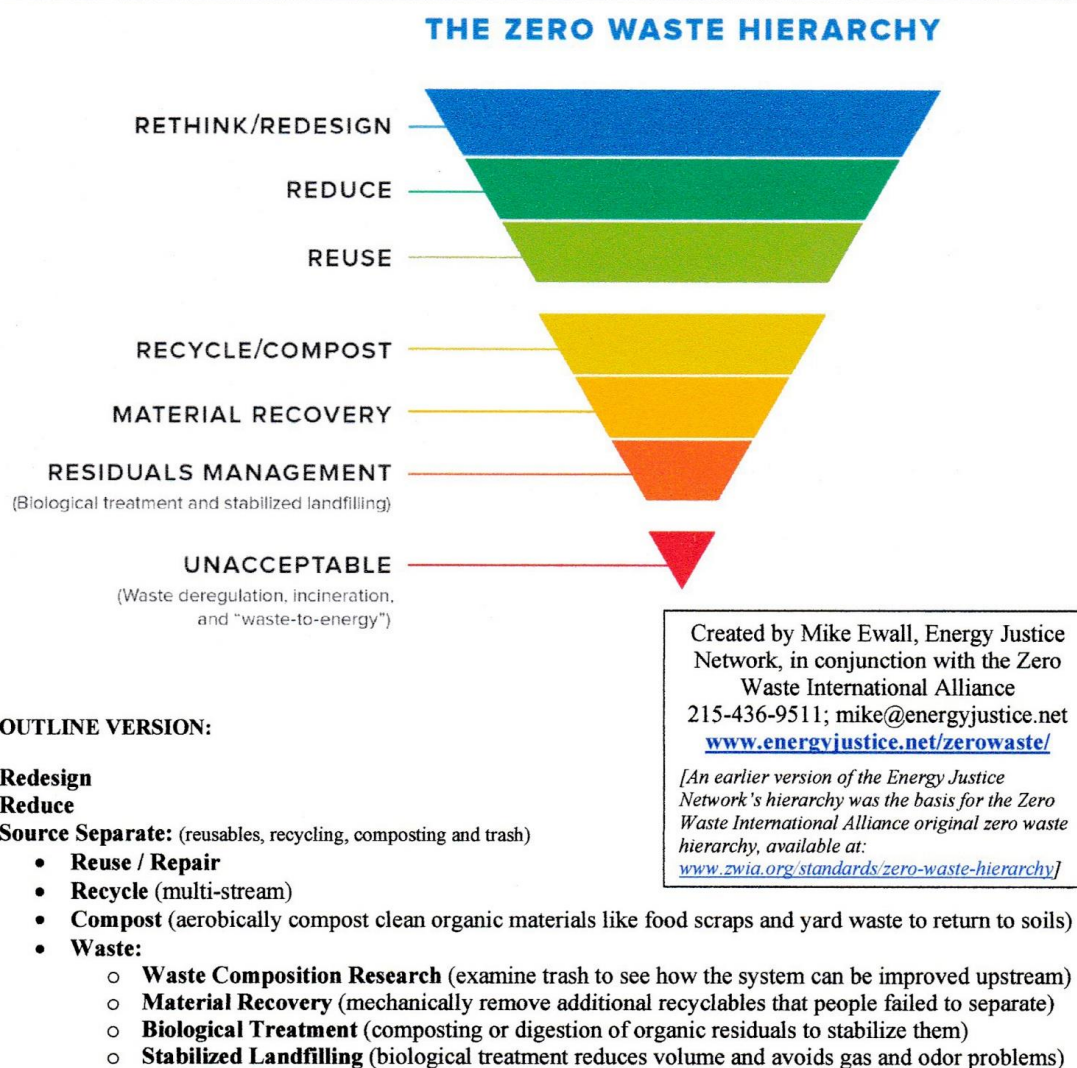
“Zero Waste is a goal that is ethical, economical, efficient and visionary, to guide people in changing their lifestyles and practices to emulate sustainable natural cycles, where all discarded materials are designed to become resources for others to use.

Zero Waste means designing and managing products and processes to systematically avoid and eliminate the volume and toxicity of waste and materials, conserve and recover all resources, and **not burn or bury them**.

Implementing Zero Waste will eliminate all discharges to land, water or air that are a threat to planetary, human, animal or plant health.”

**Peer-reviewed definition of Zero Waste, by the Zero Waste International Alliance**

[www.zwia.org/standards/zw-definition/](http://www.zwia.org/standards/zw-definition/)



**FULL VERSION:**

**Redesign** – make products durable, recyclable or compostable, and from sustainable / recycled materials

**Reduce**

- Toxics Use Reduction
  - Reduce amounts of toxic chemicals in production
  - Replace toxic chemicals with less toxic or non-toxic alternatives
- Consumption Reduction
  - Reduce pervasive advertising
  - Teach people to use less, to buy products with less packaging, and to avoid disposables and non-recyclables products
- Packaging Reduction
  - Includes polystyrene and PVC plastic bans and single-use paper/plastic bag bans and taxes

**Source Separate:**

- Avoid [single stream](#) (paper mixed with bottles/cans) and “[one bin for all](#)” (no source separation)
- Better separation = more valuable materials to market

**Reuse & Repair**

- Mandate deconstruction of buildings
- Thrift stores & charity collections
- Legalize wastepicking / dumpster diving
- Encourage discard exchanges like Freecycle
- Incentivize food recovery
- Paint recycling / exchange
- Repair centers for bikes, computers, furniture, appliances, etc.

**Recycle**

- Dual-stream recycling (paper separate from glass/metal/plastic) to a Material Recovery Facility
- Incentivize recycling through per-bag utility pricing, called “Pay As You Throw” (PAYT)
- Adopt a bottle deposit bill
- Buy recycled and create local markets for materials
- Seek the highest end-use and avoid “downcycling”
- Create recycling programs for electronic waste (e-Stewards certified), household hazardous wastes, etc.
- Residuals from recycling (that which can’t be recycled at a MRF) jump down to the research step below

**Compost**

- Weekly curbside collection of recyclables and organics can be done while decreasing the collection of trash to every other week (what smells in trash is the compostables, so this encourages composting).
- Ban clean organics (not [sewage sludge!](#)) from landfills. Sewage sludge, even once digested, does not belong on farm fields or in urban gardens. Clean compost from food scraps and yard waste can be used in landscaping and non-food agriculture uses.

**Research**

- Do a regular waste sort to see what’s left in the waste stream. Use Extended Producer Responsibility campaigns, product bans and other measures to eliminate remaining materials from the waste stream, ensuring that they’re dealt with higher in the hierarchy.

**Material Recovery**

- For the remaining waste, mechanically pull out additional recyclables. This uses the sorting capability of a “Dirty MRF,” or “Mixed Waste Processing” facility, but should never be a replacement for source separation, upstream recycling and composting, as it will get people out of good recycling habits and will degrade the quality of recyclables, lowering their value, and far less will actually be recycled.

**Biological Treatment**

- Stabilize organic material in the remaining residuals, using aerobic composting (or, to be more thorough, anaerobic digestion followed by aerobic composting to dry it out). This avoids having gassy and stinky landfills. Digestion removes the methane generating potential from the waste, and is the only so-called “waste-to-energy” component of a zero waste system.
- Digested residuals are too contaminated to be marketed as fertilizer or soil amendment.

**Stabilized Landfilling** – monofill the stabilized waste in separate landfill cells at existing landfills. Ensure proper landfill management (don’t mismanage the landfill by managing it for energy production):

*If disposing of the stabilized residuals in a conventional landfill full of decaying organic material, it’s important to manage the landfill properly, as follows:*

- Minimize gas production: Don’t manage the landfill as an energy facility by stimulating gas production.
- Maximize gas collection:
- Clean the captured gas prior to use, by filtering toxins in the gas into a solid medium like a carbon filter, to be containerized and stored on-site.
- The purified gas can be used for industrial heating or heating trucking purposes.
- Landfill gas-to-energy should not be considered renewable (That allows it to undercut clean sources like wind and solar and puts source reduction, reuse, recycling and composting at a competitive disadvantage.)

For more details on proper landfill management at the back end of the Zero Waste Hierarchy, see [www.energyjustice.net/zerowaste/hierarchy](http://www.energyjustice.net/zerowaste/hierarchy) and [www.energyjustice.net/lfg](http://www.energyjustice.net/lfg)