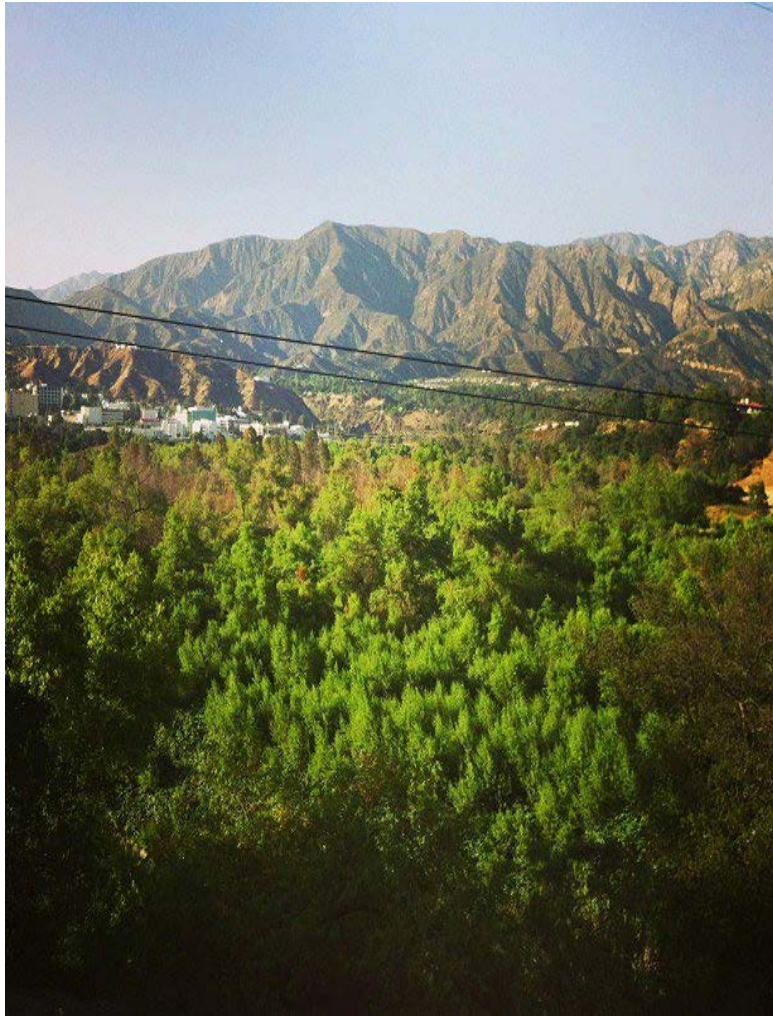


# LA County Flood Control's Hahamongna Sediment Program



**Final EIR Review – The Big Dig**

# LA County Flood Control's Hahamongna Sediment Removal Program



## Hahamongna Timeline

Year	Event
1994	Last big sediment removal
Aug. 2009	Station Fire
Jan. 2010	Major Flood
Nov. 2010	County Announces 1.67 mcy removal program
Apr. 2011	Supervisors Order EIR
Nov. 2013	Draft EIR issued for comments
May 2014	Pasadena Council Approves Sediment Working Group Recs
Oct. 2014	Final EIR released
Fall 2015	Sediment Program to Begin

# What's Wrong with the Big Dig?



- 150,000 Trucks; 400+ per day
- Congested Traffic
- Noise and dust
- Loss of Recreational Activity
- Massive Habitat Destruction
- 2007 Diesel Trucks are not low-emission

# The Big Dig Is Not Sustainable



1. The Big Dig is an outdated mining and trucking operation that is just going to happen again in 20 years.
2. It is not sustainable, doesn't deal with climate change, or integrate with stream restoration and watershed management
3. It is not responsive to Pasadena and massive public input

# There is a Better Plan

## Pasadena Sediment Working Group Recommendations



### Goals:

- To ensure flood protection for local residents below Devil's Gate Dam
- To preserve the rare natural values of the Arroyo Seco and Hahamongna Watershed Park, and
- To minimize impacts on local neighborhoods.

These goals can best be achieved by an ongoing sediment management program that minimizes negative impacts on Hahamongna and the surrounding neighborhoods.

**- Unanimously approved by Pasadena City Council – May 12, 2014**

# Comparison

Project Impact	County Flood Control District	Pasadena Proposal
Trucks Per Day	400+	120
Sediment Removed	2.4+ <sup>1</sup> mcy	1.1 mcy; ongoing
Footprint	120+ acres	40 acres
Permanent Habitat Impact	71 acres with permanent roads	40 acres (with 10 acre conservation pool)

<sup>1</sup> 2.4 million cubic yards plus any additional deposits

# Comparison

Project Impact	County Flood Control District	Pasadena Proposal
Amount Per Year	800,000+ <sup>1</sup> cy	220,000 cy
Duration	5 years	5 years +
Mitigation <sup>2</sup>	1:1	5:1

<sup>1</sup> 800,000 cy plus any additional deposits

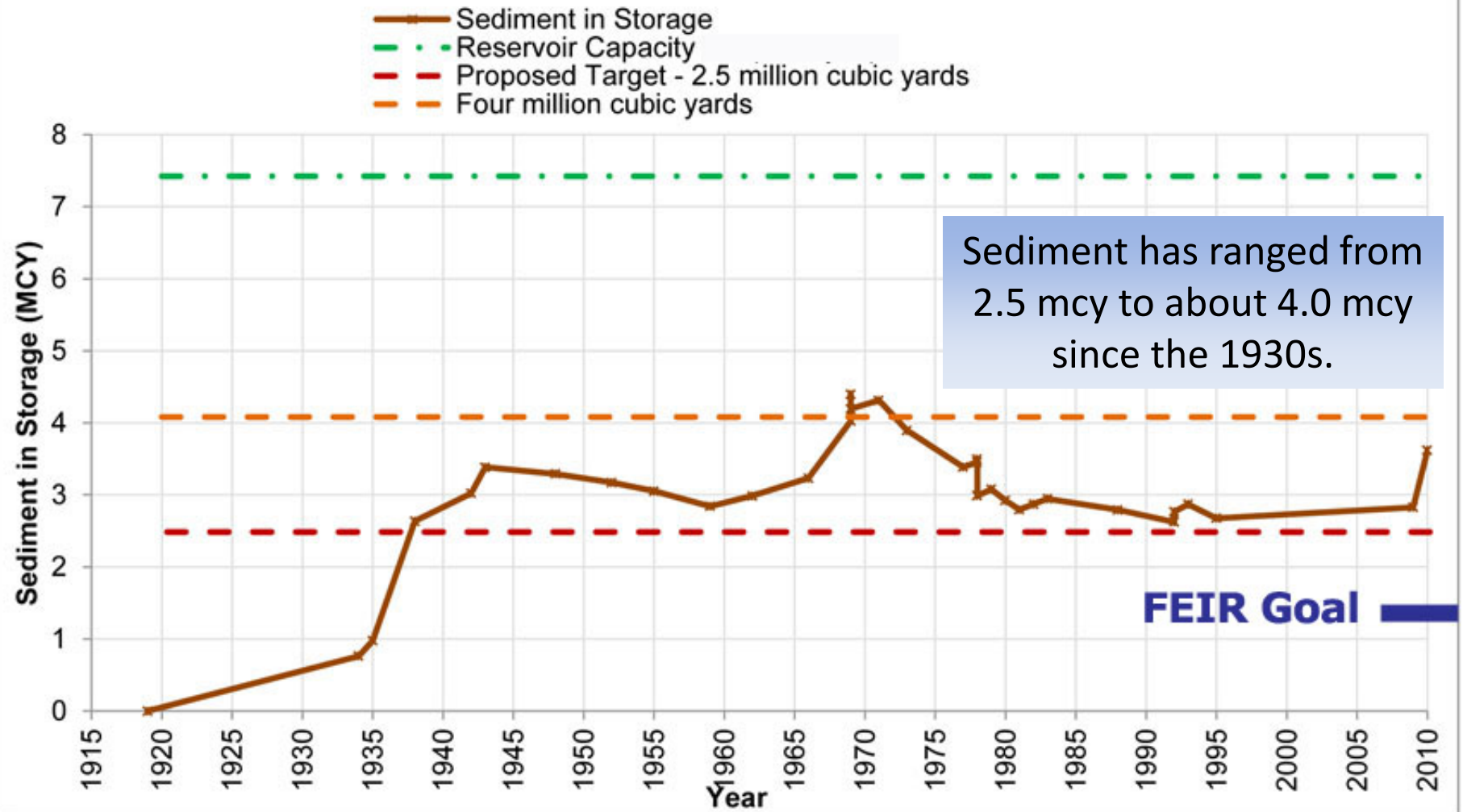
<sup>2</sup> Mitigation plan is not detailed

# The Sustainable Sediment Management Program Approved by Pasadena City Council

- Pasadena proposes a long-term agreement with LACFCD for the County to achieve and maintain a capacity in the Hahamongna basin for 2.5 million cubic yards (mcy) of sediment.
- In reaching and maintaining this capacity, no more than 220,000 cubic yard (cy) would be removed per year, except after unusually large storm events.
- Maintaining sediment capacity of 2.5 mcy will ensure adequate flood protection while minimizing impacts to habitat and recreation activities in Hahamongna Watershed Park and the surrounding communities.

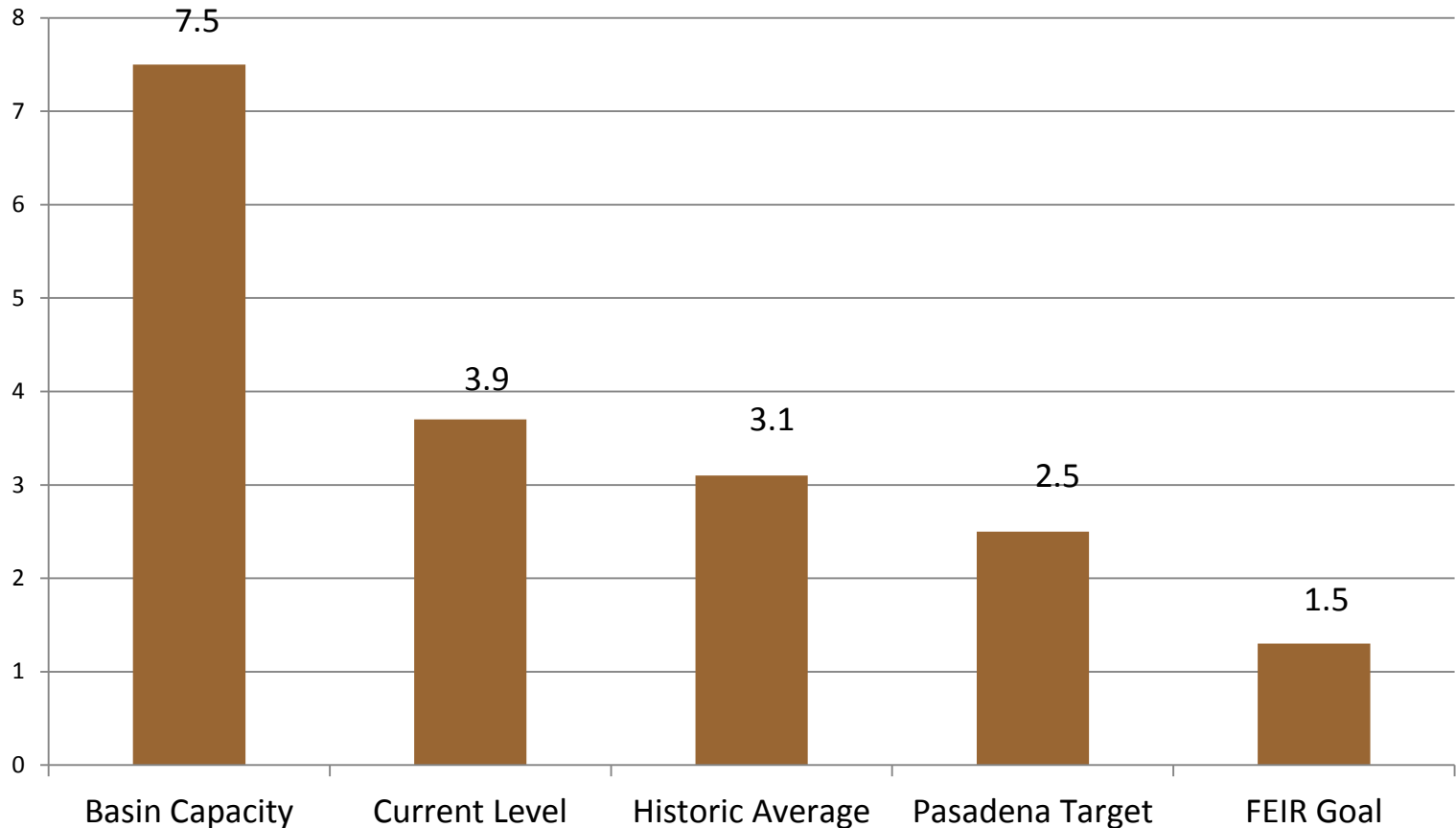


# Target: 2.5 mcy of Sediment Storage



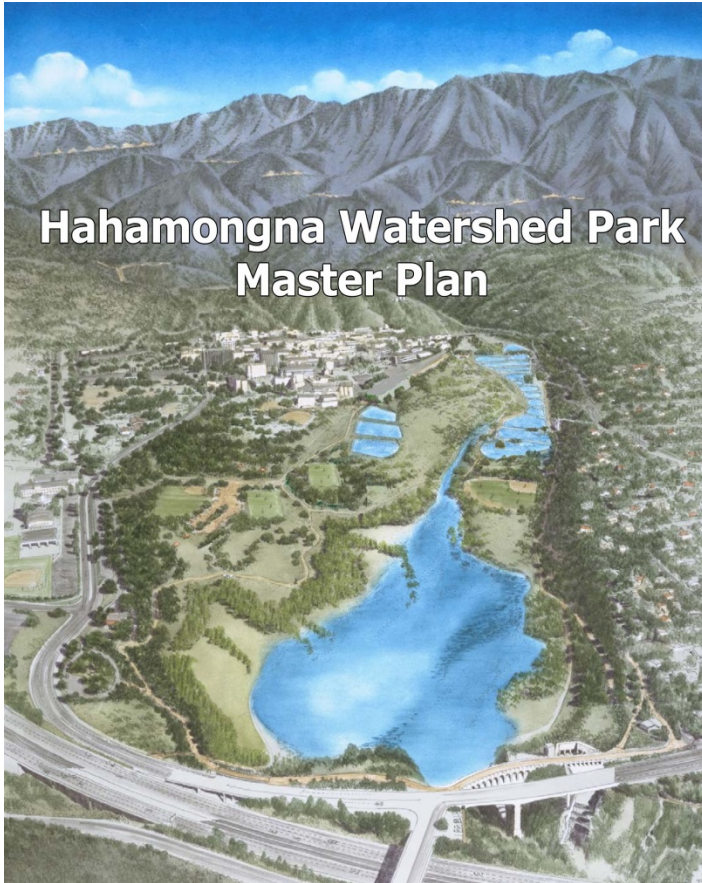
If the County's goal is so sacred, why hasn't the sediment level been that low since 1935?

# Level of Sediment in the Hahamongna Basin



**Removing excessive sediment is costly, destructive to our neighborhoods and destroys the stable base for healthy habitat.**

# The Big Dig vs. Hahamongna Master Plan



The County claims their Big Dig conforms with Pasadena's Hahamongna Watershed Park Master Plan initially approved in February 2000.

But that 15-year-old plan calls for:

- Development of a cooperative program with Pasadena and a multi-agency task force
- An ongoing sediment removal program with regular small removals
- Procedures that promote preservation of native habitats
- A seasonal conservation pool by the dam
- Minimizing impact to the basin and surrounding neighborhoods
- State of the art equipment to minimize dust and noise

**If the County had followed the HWPMP, Hahamongna would not have filled up with sediment to the current level.**

∩ Total Project Footprint (71 Acres)  
■ Maintenance Area (52 Acres)  
■ Revegetation Area (19 Acres)



**Alternative 3, Configuration D, Option 2**

## Footprint of the FEIR Compared to the Pasadena Recommended Footprint

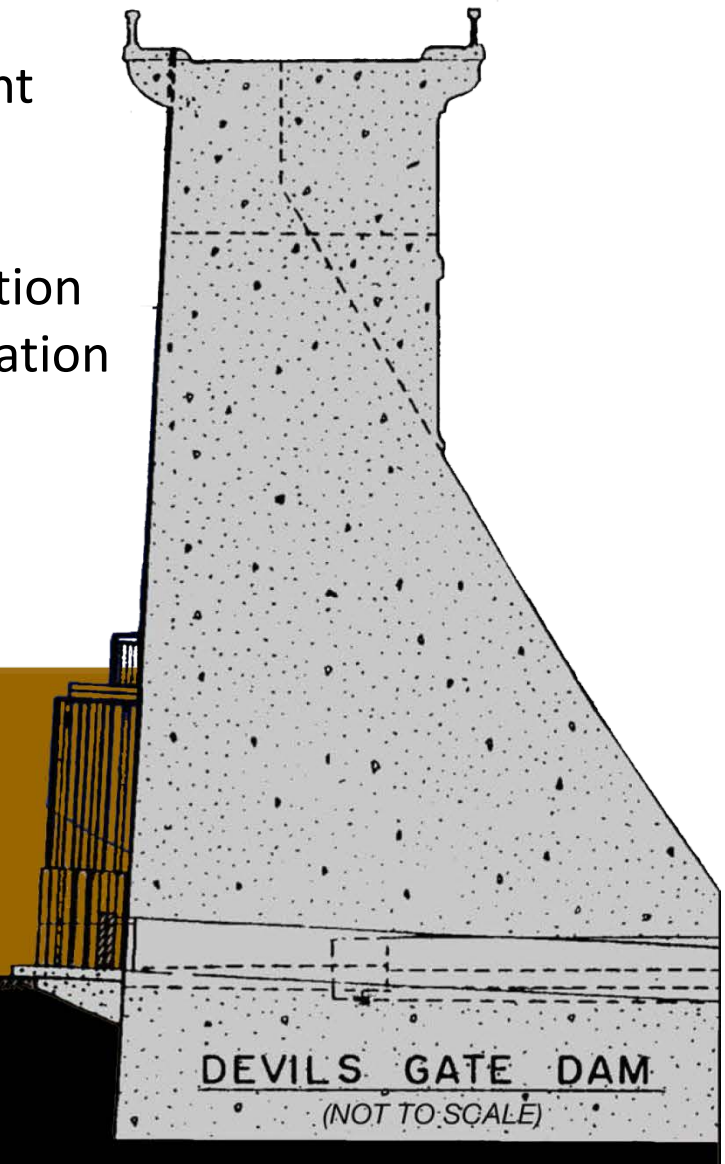
\* Pasadena footprint of forty acres includes ten acre seasonal conservation pool near dam.



## Advantages of the Pasadena Plan

- Roadmap for ongoing, sustainable sediment management
- Reduced neighborhood impacts (75% less)
- Stable base for habitat, wildlife and recreation
- Will prevent dangerous sediment accumulation while preserving nature
- Integrates with watershed and ecosystem restoration goals

**Pasadena Proposed  
Target Sediment Level -  
2.5 mcy**



# Save Hahamongna

## What you can do:

### November 3 – Pasadena City Council Meeting

Urge the Pasadena City Council to stick by their recommendations and protect our neighborhoods and Hahamongna

### November 12 – LA County Supervisors Meeting

Tell the County Supervisors to adopt a 21<sup>st</sup> century sustainable flood and sediment management program

## For more information and updates:

[www.savehahamongna.org](http://www.savehahamongna.org)

To help Save Hahamongna, contact the Arroyo Seco Foundation,  
[savehahamongna@arroyoseco.org](mailto:savehahamongna@arroyoseco.org)