



OTCnet Local Bridge (OLB) Configuration and Set-Up Guide

June 2022

Version 3.1

Table of Contents

PURPOSE	5
SECTION I: PREPARE FOR THE OLB SETUP	5
SECTION II: DOWNLOAD AND INSTALL THE OLB APPLICATION	7
SECTION III: CREATE AN OLB PROFILE AND IMPORT OLB CREDENTIALS	8
SECTION IV: START THE OLB	9
SECTION V: OLB TROUBLESHOOTING.....	10
How to Set-Up the OLB: General System Requirements	10
Which operating systems are compatible with the OLB Application?	10
Which Internet Explorer versions are compatible with the OLB Application?	10
What is the ideal Transport Layer Security (TLS) that should be enabled?.....	10
How much workstation memory is needed?	10
How much free space is needed?	10
How to Set-Up the OLB: Check Processing Requirements	10
Which Adobe versions are compatible with OTCnet?	10
Which version of Adobe Reader is required at minimum?.....	10
How to Set-Up the OLB: OLB System Requirements	10
How do I configure the Local Intranet zone under the Internet Explorer Security Internet Settings?	10
How do I configure the Internet Explorer Compatibility View settings?	12
When creating the OLB Profile and saving the INI file, can you rename it to the user's name?	13
How do I know if the OLB was successfully installed?.....	13
How to Create an OLB Profile	15
How do I know if I successfully imported my OLB credentials?.....	15
How do I change my OLB password?.....	15
After changing my OLB password, do I need to import my OLB credentials again?.....	15
How to Start the OLB	16
How do I know if I successfully started the OLB Application?.....	16
What should I do when I see the OTCnet Configurable Options window?	16
How do I know if the OLB Application is running?	17



OTCnet Local Bridge (OLB) Configuration and Setup Guide

What should I do if the OLB Communication status bar is not showing up on the Check Scan page?17

What should I do if the OLB Communication status bar is not showing up on the Card Processing page?.....17

What should I do if I encounter a terminal configuration message?18

SECTION VI: OLB FREQUENTLY ASKED QUESTIONS (FAQS)..... 20

Prepare for the OLB Setup20

Do Deposit Processing users need to use the OLB?20

How will the OLB impact Check Capturing, Check Processing, and Card Processing activities?20

Who do I contact to find out who my Agency POC is?.....21

How do we check which version of firmware we have?21

Do I need to update my Firmware to download the OLB?.....21

Which check scanners are compatible with the OLB?21

Is the OLB compatible with Windows 10 and 11 64-bit?.....21

Is the OLB compatible with Microsoft Edge or other internet browsers?.....21

Install the OLB Application.....22

Which roles are authorized to download the OLB Application?22

Do Check Capture Administrators and Card Administrators need to have Windows Administrator privileges to download the OLB Application?.....22

Who can install the OLB Application installation package?.....22

Do users need to have Windows Administrator privileges to install the OLB Application?22

We have multiple users using the same workstation, and each user has a different login. Does the OLB need to be separately installed?22

Can a user with multiple roles, such as Check Capture Administrator, Check Capture Supervisor, Check Capture Operator, Card Administrator, or Card Operator download and install the OLB Application and certificate?.....22

Can my agency install and manage its own Java version?22

Create an OLB Profile23

Who needs to create an OLB profile?.....23

After the OLB Application is installed, will users be able to create and import their own OLB credentials?.....23

Does each user need to create an OLB profile on a shared workstation?.....23

Does my OLB password need to match my OTCnet Online password?.....23



OTCnet Local Bridge (OLB) Configuration and Setup Guide

Do I need to change my OLB password if I changed my OTCnet Online password?.....	23
How often do I need to change my OLB password?	23
Start the OLB	23
Is there a way to turn off the message (Java Applets/OLB Dialog Box) that pops up every time we login on the other terminal?	23
Do I need the OLB to configure a check capture or card terminal?	23
When do I need to log into the OLB Application?	23
SECTION VII: ADDITIONAL RESOURCES	24
Helpful Links	24
Training Resources	24
User Guides	25
SECTION VIII: ADDITIONAL SUPPORT	26

PURPOSE

The following guide provides step-by-step instructions on how to complete the OLB set-up, enabling terminals to connect to the OTCnet Online Application without Java Applets.

Note: Many of the Printable Job Aids included in this guide are related to Check Capture. The steps presented in these guides enable users to set-up their OLB profiles and enable the OLB to support Card Processing, Check Capture, Check Processing and Terminal Configuration Operations.

SECTION I: PREPARE FOR THE OLB SETUP

Complete the following steps to ensure system requirements are met.

1. Check system requirements to complete any necessary configurations.
 - Refer to the OTCnet System Requirements and Reference Guide:
<https://fiscal.treasury.gov/files/otcnet/otcnet-sys-req.pdf>
 - Review the following sections in the guide:
 - *General Requirements* (page 3)
 - *OLB Prerequisites* (page 4)
 - *Check Processing Requirements* (page 5)
 - *Check Capture Hardware/Scanner Requirements* (pages 6)
 - *OTCnet Card Processing Requirements* (page 9)
2. For OLB version 2.5.0.0 and newer, the bundled Java Runtime Environment (JRE) was removed from the OLB installer. The OLB installer now verifies whether Java is installed on the workstation, and if the Java version is one that OTCnet supports. If Java is not installed on the workstation, Windows Administrator privileges are required to install Java. Refer to the *Install the OTCnet Local Bridge (OLB) Application* (PJA):
https://fiscal.treasury.gov/otcnet/training/wbt/content/resources/PJA/pja_download_olb.pdf
3. Confirm the installed OTCnet Firmware is 4.3.0.
 - To upgrade the Firmware, refer to the *Download Firmware Printable Job Aid* (PJA):
https://fiscal.treasury.gov/otcnet/training/wbt/content/resources/PJA/pja_download_firmware.pdf
 - To install the Firmware, refer to the *Install Firmware PJA*:
https://fiscal.treasury.gov/otcnet/training/wbt/content/resources/PJA/pja_install_firmware.pdf

Note: Firmware is only required for Check Processing; it is not required for Card Processing.

OTCnet Local Bridge (OLB) Configuration and Setup Guide

4. Modify Internet Explorer Internet Settings as needed. Skip this step if using Microsoft Edge or Google Chrome.
 - On June 15, 2022, Microsoft ended support for Internet Explorer 11 (IE 11). Windows 10 and 11 do not support IE 11. As a result, OTCnet users are strongly encouraged to:
 - Use Google Chrome or Microsoft Edge
 - Upgrade to the latest firmware (check processing only)
 - Upgrade to the latest OLB (check and card processing only)
 - Review the *OLB Prerequisites* section of the OTCnet System Requirements and Reference Guide (page 4).

SECTION II: DOWNLOAD AND INSTALL THE OLB APPLICATION

Once the system is prepared for OLB installation, complete the following steps to install the application.

1. Download the OLB Application Installation Package.
 - For guidance, refer to the *Download OLB Application PJA*:
https://fiscal.treasury.gov/otcnet/training/wbt/content/resources/PJA/pja_download_olb.pdf

Note: Only the Check Capture Administrator (CCA) and the Card Administrator (CA) are authorized to download the OLB Application Installation Package. After the OLB Application's Installation Package is downloaded, any user role with Windows Administrator privileges can complete the installation and setup of the OLB.

2. Install the OLB Application.
 - For guidance, refer to the *Install the OLB Application PJA*:
https://fiscal.treasury.gov/otcnet/training/wbt/content/resources/PJA/pja_install_OLB.pdf
 - It is recommended to use the default **Server Port Settings** during the OLB installation process. If you would like to modify **Server Port Settings**, contact the OTCnet Customer Support Team for assistance.

Note: Each user will need to download and install the OLB Application installation package for access. For multiple users assigned to a shared terminal, it is recommended that the Agency IT Administrator use the **mmc.exe** approach to install the OLB Application on a shared workstation. This will bypass the need for each user to install the OLB Application under their individual workstation login.

SECTION III: CREATE AN OLB PROFILE AND IMPORT OLB CREDENTIALS

Each Check Capture, Check Processing, and Card Processing user (e.g., *Check Capture Administrator, Check Capture Supervisor, Check Capture Lead Operator, Check Capture Operator, Card Administrator or Card Operator*) must complete the following steps to create individual OLB credentials for access.

1. Create the OLB Profile.

- For guidance, refer to the *Create the OLB Profile PJA*:
https://fiscal.treasury.gov/otcnet/training/wbt/content/resources/PJA/pja_create_olb_profile.pdf

Note: The OLB password never expires. To reset the password, a new OLB profile will need to be created. Users' OTCnet Online passwords are not connected or tied to their OLB passwords. Therefore, updated OTCnet Online passwords do not impact or change users' OLB passwords.

2. Import OLB Credentials.

- To ensure successful import, refer to the *Import OLB Credentials PJA*:
https://fiscal.treasury.gov/otcnet/training/wbt/content/resources/PJA/pja_import_olb_credentials.pdf

Note: Users who access OTCnet on multiple terminals can save their OLB credential file to a shared folder (if accessible). Users can then import their unique OLB credential on each terminal.

SECTION IV: START THE OLB

Each user will need to complete the following steps to launch the OLB and conduct Check Processing, Check Capture, and Card Processing activities.

1. Start the OLB Application.

- To ensure successful launch of the OLB, refer to the *Start and Stop the OLB Application PJA*:

https://fiscal.treasury.gov/otcnet/training/wbt/content/_resources/PJA/pja_start_stop_olb.pdf

Note: There is no “timeout” with the OLB Application (i.e., a suspension or break in OTCnet activity). Therefore, the OLB Application will stay connected unless one of the following occurs:

- The user logs out of the workstation (Windows session)
- The terminal is turned off, restarted, or rebooted
- The user stops the OLB Application on the terminal

2. Log into OTCnet Online.

- For guidance, refer to the *Log In to OTCnet Online PJA*

https://fiscal.treasury.gov/otcnet/training/wbt/content/_resources/PJA/pja_log_on_otcnet.pdf

SECTION V: OLB TROUBLESHOOTING

To remedy common challenges when completing the OLB configuration and set-up, explore and consult the troubleshooting topics below:

How to Set-Up the OLB: General System Requirements

Which operating systems are compatible with the OLB Application?

Windows 11 and Windows 10 (64-bit versions) are supported by OTCnet and the OLB.

Which Internet Explorer versions are compatible with the OLB Application?

Microsoft Edge, Google Chrome, and Internet Explorer 11 are supported by OTCnet.

What is the ideal Transport Layer Security (TLS) that should be enabled?

The TLS 1.2 option must be enabled for all workstations using Windows 10 or Windows 11.

How much workstation memory is needed?

At a minimum, 2 GB physical memory is required.

How much free space is needed?

100 MB of free disk space is required at minimum.

How to Set-Up the OLB: Check Processing Requirements

Which Adobe versions are compatible with OTCnet?

All versions of Adobe are compatible with OTCnet. Adobe X may require modifications to the web browser configuration.

Which version of Adobe Reader is required at minimum?

Adobe 7 or higher is required.

How to Set-Up the OLB: OLB System Requirements


If you are using Google Chrome or Microsoft Edge, you can skip this step. If you use Internet Explorer 11 to process checks or card payments, complete the configuration steps below.

On June 15, 2022, Microsoft ended support for Internet Explorer 11. Windows 10 and 11 do not support Internet Explorer 11. OTCnet users are strongly encouraged to use Google Chrome or Microsoft Edge to avoid taking additional actions.

It is highly recommended that OTCnet support staff and users work with their Agency IT Administrator to address any Internet Explorer related configuration challenges. Administrator privileges may be needed.

How do I configure the Local Intranet zone under the Internet Explorer Security Internet Settings?

Complete the following steps. See **Figure 1**.

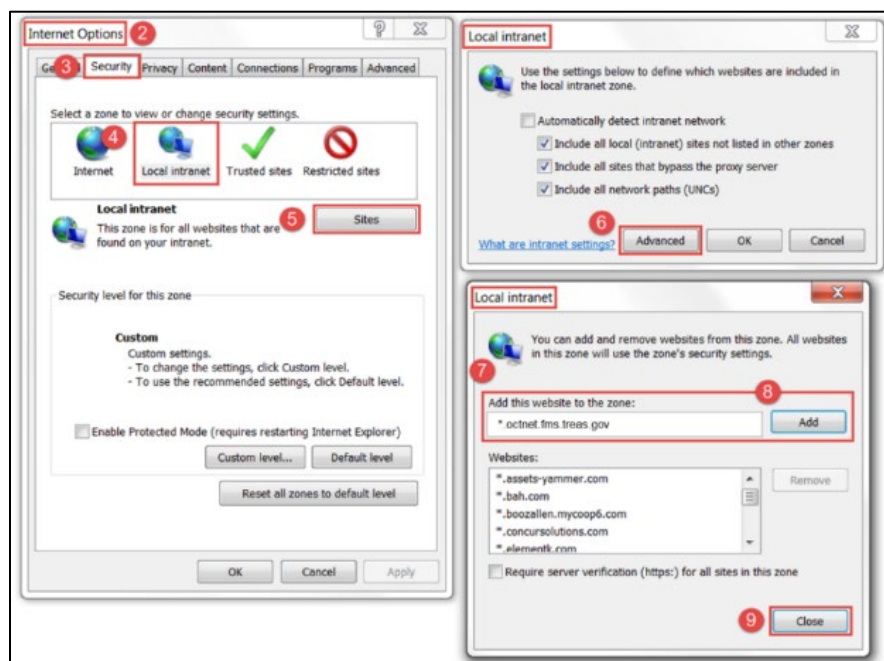
1. Launch Internet Explorer.
2. From the **Tools** menu (refer to the upper right-hand  button), click **Internet options**.
3. Click the **Security** tab.
4. Select **Local Intranet** zone.
5. Ensure the **Enable Protected Mode** is unchecked.
6. Click **Sites**.

OTCnet Local Bridge (OLB) Configuration and Setup Guide

7. In the **Local Intranet** window, click **Advanced**.
8. Enter ***.otcnet.for.fiscal.treasury.gov** in the **Add this website to the zone** field.
9. Click **Add**.
10. Enter ***.otcnet.fms.treas.gov** in the **Add this website to the zone** field and click **Add**. Skip this step if it already exists.
11. Click **Close**.

Note: Ensure other OTCnet specific websites, such as www.otcnet.for.fiscal.treasury.gov, www.otcnet.fms.treas.gov or <https://doc.ssologin1.fms.treas.gov>, are not included in the **Local intranet Websites** listing.

Figure 1. Local Intranet Configuration



OTCnet Local Bridge (OLB) Configuration and Setup Guide

How do I configure the Internet Explorer Compatibility View settings?

If you are using Google Chrome or Microsoft Edge, skip the steps below. If you use Internet Explorer 11 to process checks or card payments, see **Figure 2** and complete the following configuration steps:


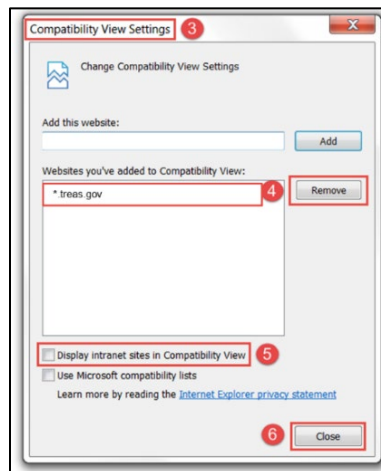
1. Launch Internet Explorer 11.
2. From the **Tools** menu (refer to the upper right-hand  button), click **Internet options**.
3. Click **Compatibility View Settings**.
4. Under the **Websites you've added to Compatibility View**, remove **treas.gov** and **treasury.gov** if it listed.
5. Ensure the **Display intranet sites in Compatibility View** is unchecked.
6. Click **Close**.

Figure 2. Compatibility View Settings Configuration



OTCnet Local Bridge (OLB) Configuration and Setup Guide

When creating the OLB Profile and saving the INI file, can you rename it to the user's name?

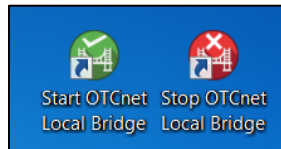
No, the INI file name must remain the same as it was generated. If the file name is changed, the OLB Application will not run.

How do I know if the OLB was successfully installed?

Confirm installation by verifying the following areas:

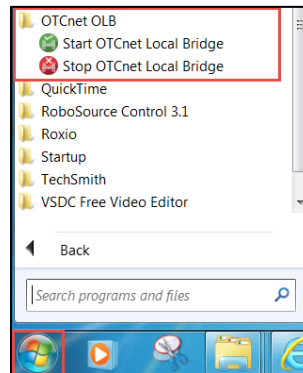
1. Verify there are **Desktop icons** for **Start OTCnet Local Bridge** and **Stop OTCnet Local Bridge**. See **Figure 3**.

Figure 3. Start and Stop OTCnet Local Bridge Desktop Icons



2. Under **All Programs** from the **Windows Start** dropdown, confirm **Start OTCnet Local Bridge** and **Stop OTCnet Local Bridge** are listed. See **Figure 4**.

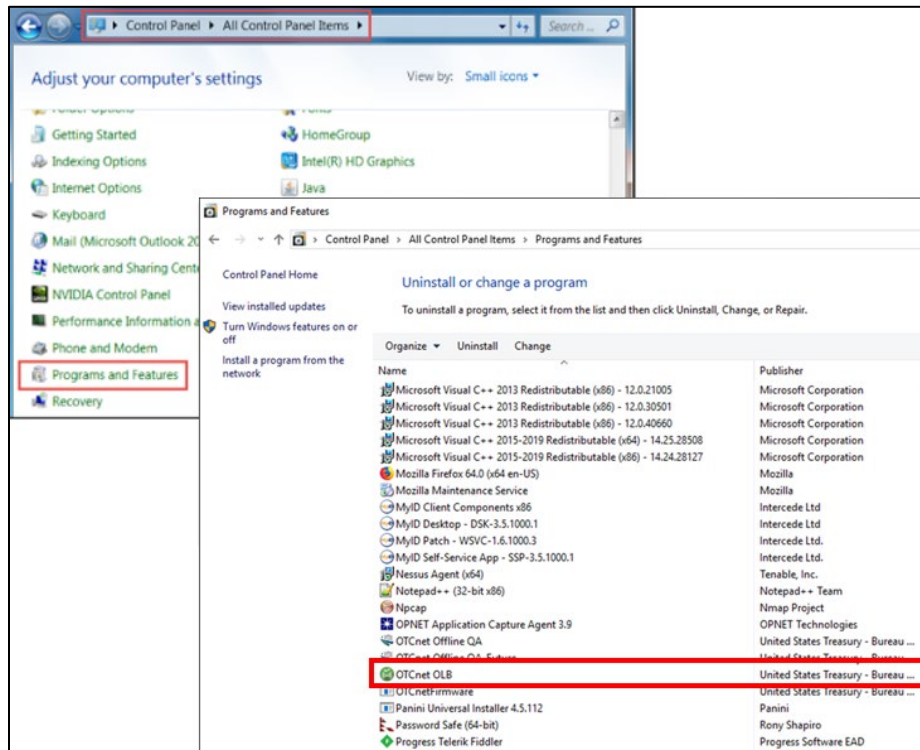
Figure 4. Start Menu - Start and Stop OTCnet Local Bridge



3. Under **Programs and Features** from the **Control Panel**, ensure that the OTCnet OLB is listed. See **Figure 5**.

OTCnet Local Bridge (OLB) Configuration and Setup Guide

Figure 5. Programs and Features - Listing of Installed Programs



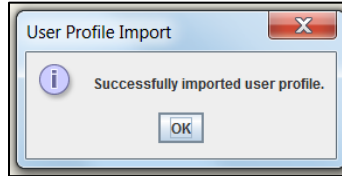
Note: The OLB Installer verifies that Java is installed on the workstation. If Java is not installed, you will receive a “Java 8, Java 11, or Java 17 must be installed for the OLB to function. The JAVA_HOME environment variable must also be set pointing to the main Java installation folder” message. A Windows Administrator must install Java.

How to Create an OLB Profile

How do I know if I successfully imported my OLB credentials?

After uploading the appropriate INI file, a confirmation window should appear. See **Figure 6**.

Figure 6. Successful User Profile Import Confirmation Window

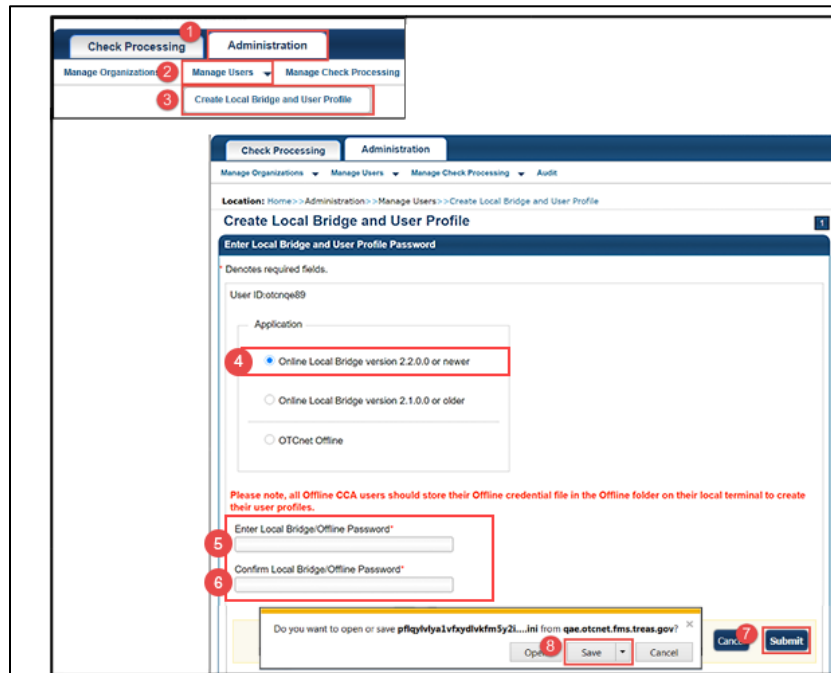


How do I change my OLB password?

Complete the following steps. See **Figure 7**.

1. After logging into OTCnet Online, click the **Administration** tab.
2. Select **Manager Users**.
3. Click **Create Local Bridge and User Profile**.
4. Ensure **Online Local Bridge version 2.2.0 or newer** radio button is selected.
5. Enter a password in the **Enter Local Bridge/Offline Password*** field.
6. Enter same password in the **Confirm Local Bridge/Offline Password*** field.
7. Click **Submit**.
8. Save the INI file.

Figure 7. Change OLB Password



After changing my OLB password, do I need to import my OLB credentials again?

Yes, Card Processing, Check Capture, Check Processing and Terminal Configuration Operations users will need to import their OLB credentials after changing their OLB passwords.

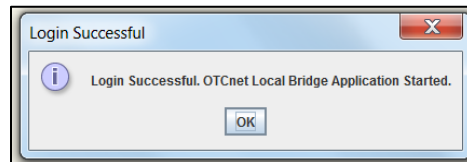
OTCnet Local Bridge (OLB) Configuration and Setup Guide

How to Start the OLB

How do I know if I successfully started the OLB Application?

After entering your OTCnet login ID and OLB password, a confirmation window should appear. See **Figure 8**.

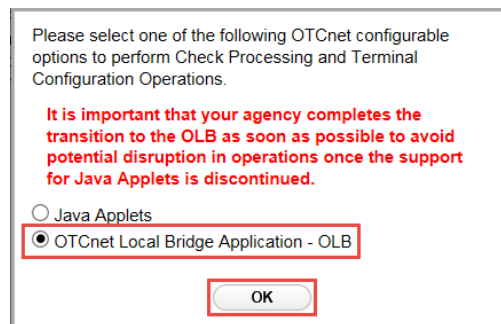
Figure 8. Successful Login Confirmation Window



What should I do when I see the OTCnet Configurable Options window?

After logging into the OLB Application and OTCnet Online, users will need to select the OTCnet Local Bridge Application – OLB radio button from the OTCnet Configurable Options window. See **Figure 9**.

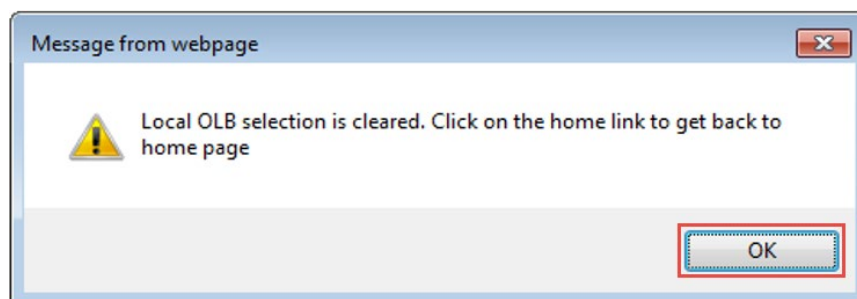
Figure 9. OTCnet Configurable Options Window



Note: If a user clicks the **OTCnet Local Bridge Application – OLB** radio button in error before the OLB has been set up, the following steps will reset the system to display the *Java Applets/OTCnet Local Bridge Application* dialog box where the user can then click the Java Applets radio button:

1. Log into OTCnet.
2. While logged into OTCnet, copy and paste the following hyperlink: <https://otcnet.fms.treas.gov/otcnet/views/resetSplash.xhtml> into the Internet Explorer address bar and press **Enter** on the keyboard. Ensure the 'S' in Splash is capitalized.
3. Click **OK**. See **Figure 10**.

Figure 10. Message from webpage



OTCnet Local Bridge (OLB) Configuration and Setup Guide

- The user will now see the *Java Applets/OTCnet Local Bridge Application Dialog Box* on return to the login page. The defaulted option is now Java Applets, users can click **OK** and proceed as normal.

How do I know if the OLB Application is running?

After logging into OTCnet Online, check to see if the **OLB Communication** status bar appears on the **Check Scan** page. See **Figure 11** and **Figure 12**.

Figure 11. OLB Communication Status Bar for Check Processing

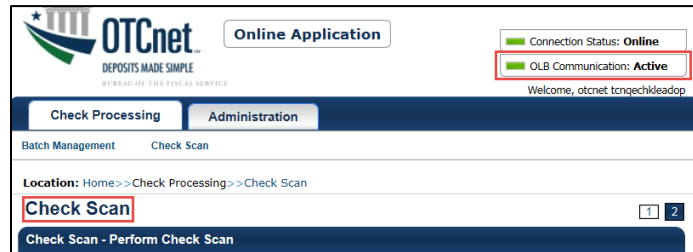
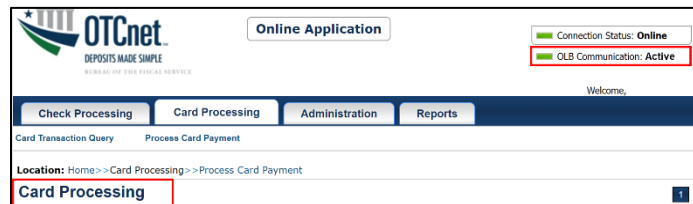


Figure 12. OLB Communication Status Bar for Card Processing



What should I do if the OLB Communication status bar is not showing up on the Check Scan page?

Only the Check Capture Lead Operator (CCLO) and Check Capture Operator (CCO) will see this indication on the Check Scan page once the OLB set up is successful. If you are a CCLO or CCO and you do not see the Communication status bar, check your OLB system requirements, specifically your Internet Explorer **Internet options** and **Compatibility View settings**. Ensure the **Trusted Sites** zone, **Local Intranet** zone, and **Compatibility View** settings are configured correctly.

Review the following available resources:

- The OTCnet System Requirements and Reference Guide (page 4):
<https://fiscal.treasury.gov/files/otcnet/otcnet-sys-req.pdf>
- In this Guide, [Section V: OLB Troubleshooting: How to Setup the OLB: OLB System Requirements](#)

What should I do if the OLB Communication status bar is not showing up on the Card Processing page?

Only the Card Administrator and Card Operator will see this indication on the Card Processing page once the OLB set up is successful. If you are a Card Administrator or Card Operator and you do not see the Communication status bar, check your OLB system requirements, specifically your Internet Explorer **Internet options** and **Compatibility View settings**. Ensure the **Trusted Sites** zone, **Local Intranet** zone, and **Compatibility View** settings are configured correctly.

Review the following available resources:

OTCnet Local Bridge (OLB) Configuration and Setup Guide

- The OTCnet System Requirements and Reference Guide (page 4):
<https://fiscal.treasury.gov/files/otcnet/otcnet-sys-req.pdf>
- In this Guide, [Section V: OLB Troubleshooting: How to Setup the OLB: OLB System Requirements](#)

What should I do if I encounter a terminal configuration message?

See **Figure 13**.

Figure 13. Terminal Configuration Message

 **This request requires the Terminal to be configured.**

New terminals or those newly updated may need to be reconfigured. Refer to the *Configure a Check Capture Terminal Online PJA*:

https://fiscal.treasury.gov/otcnet/training/wbt/content/_resources/PJA/pja_configure_a_chk_term.pdf

What should I check if the OLB Application is not connecting to OTCnet Online?

Complete the following steps. See **Figure 14**.

1. Sign into the **Start OTCnet Local Bridge** with OLB credentials.
2. Log into OTCnet Online.
3. Press **F12** on the keyboard.
4. From the **Developer Tools** pop-up, click the **Console** tab.
5. Copy and paste the following into the input textbox:

```
ws = new WebSocket('wss://localhost:9043/websockets/olb');  
ws.onopen = function(){ alert("OLB Connection opened successfully");};  
ws.onerror = function(e){ alert("Error connecting to OLB" +e);};
```
6. Click the green arrow.
7. Ensure a **Message from the webpage** window appears.
8. Click **OK**.
9. Click **X** to close out the **Developer Tools** pop-up.

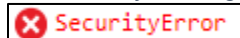
OTCnet Local Bridge (OLB) Configuration and Setup Guide

Figure 14. Troubleshooting OLB Connection to OTCnet



If an error message appears, the OLB connection is not working properly. See **Figure 15**.

Figure 15. Security Message Error



Confirm proper installation of the OLB Setup by:

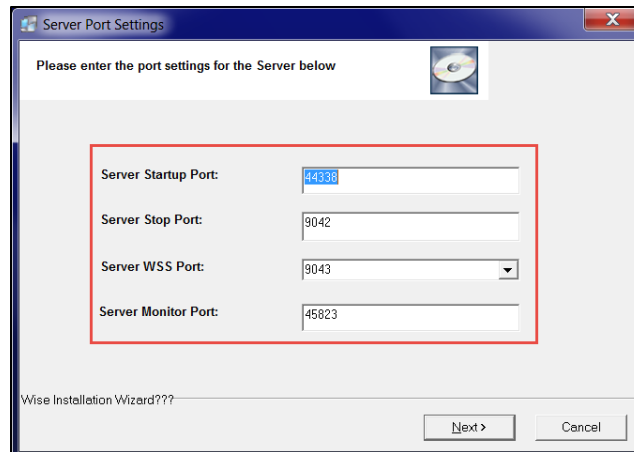
1. Ensuring all general system requirements are met
 - Windows 10 or Windows 11
 - Google Chrome, Microsoft Edge, Internet Explorer
 - Installation of Entrust Certification Authority – L1K
 - Installation of Root Certification Authority – G2

Note: The above Certification Authorities are installed by system default.
2. Ensuring all check processing requirements are met
 - Firmware 4.3.0
 - Adobe Reader 7 or higher
 - Installed Scanner Drivers
3. Ensuring all OLB system requirements are met
 - **Internet Explorer users:** Configure the **Trusted Sites** zone under Internet Explorer **Security settings**
 - **Internet Explorer users:** Configure the **Local Intranet** zone under the Internet Explorer **Security settings**
 - **Internet Explorer users:** Configure the Internet Explorer **Compatibility View settings**
 - Installation of the OLB Certificate
 - The default port settings were utilized (during execution of the OLB Application installation file)

OTCnet Local Bridge (OLB) Configuration and Setup Guide

- The default server WSS ports are 9043, 9143, 9243, 9343 and 9443. It is recommended to use the default server port settings during the OLB installation process.
- Other alternative default server ports are 44338, 9042, 9043, and 45823. See **Figure 16**.

Figure 16. Server Port Settings



4. Reviewing other security settings, such as firewall programs, user permissions, group policy settings, etc. are not interfering with access and usage of the OLB Application.
 - Verify any permissions and/or access restrictions
 - Ensure the OLB Application and its ports are not blocked by a local security program or firewall settings
 - Confirm whether users have proper permissions on the local computer to connect to the OLB Application
 - Determine whether the same OLB connection issues are experienced by other users on the shared workstation
 - Check Agency Group Policy settings
 - **For Internet Explorer users:** Ensure the required Internet Explorer sites (i.e. ***otcnet.for.fiscal.treasury.gov** and ***otcnet.fms.treas.gov**) are not being blocked.
 - Review the OLB logs for additional information
 - OLB log files are located on the local computer in the following folder: C:\OTCnet_olb\log

Note: Agency IT Administrator may need to provide support.

SECTION VI: OLB FREQUENTLY ASKED QUESTIONS (FAQS)

Explore the following FAQs regarding the OLB transition, configuration, and set-up.

Prepare for the OLB Setup

Do Deposit Processing users need to use the OLB?

No, the OLB only impacts Check Processing, Check Capture and Card Processing activities. All Check Processing, Check Capturing, and Card Processing users will need to set up their workstations with the OLB.

How will the OLB impact Check Capturing, Check Processing, and Card Processing activities?

The OLB does not change OTCnet's functionality or capabilities. Rather, the OLB removes OTCnet's dependency on Java Applets and improves the user experience with faster terminal detection.

OTCnet Local Bridge (OLB) Configuration and Setup Guide

Who do I contact to find out who my Agency POC is?

Send an email to the OTCnet Deployment Team at fiscalservice.otcdeployment@citi.com to inquire. In the email, include your full name, agency and bureau and any other pertinent information.

How do we check which version of firmware we have?

For Windows 10 and 11 users:

1. Click **Start**.
2. Click **Window Settings**.
3. Click **Control Panel**.
4. Click **Programs**.
5. Locate **OTCnet Firmware**.
6. Refer to the **Version** column to determine installed version.

Do I need to update my Firmware to download the OLB?

Yes, Firmware 4.3.0 is needed to download and use the latest OLB.

Which check scanners are compatible with the OLB?

All scanners currently supported by OTCnet are compatible with the OLB. OTCnet currently supports the RDM EC7000i, RDM EC9100i, the Panini I: Deal, and the Panini VisionX scanners. Please note that the RDM EC7000i is no longer available for purchase. Please see the OTCnet System Requirements Guide for a full compatibility matrix. Contact Customer Support if you encounter issues with your compatibility.

Is the OLB compatible with Windows 10 and 11 64-bit?

Yes, the following Operating Systems are supported by OTCnet:

- Windows 10 and 11 (OTCnet supports the 64-bit version of the operating system)

Is the OLB compatible with Microsoft Edge or other internet browsers?

OTCnet supports Google Chrome, Microsoft Edge (version 79 or higher), and Internet Explorer 11 (both 32-bit and 64-bit versions).

Install the OLB Application

Which roles are authorized to download the OLB Application?

Check Capture Administrators and Card Administrators are the only authorized users who can download the OLB Application.

Do Check Capture Administrators and Card Administrators need to have Windows Administrator privileges to download the OLB Application?

No, Check Capture and Card Administrators do not need to have Windows Administrator privileges to download the OLB Application.

Who can install the OLB Application installation package?

Any Check Processing, or Card Processing user (e.g., *Check Capture Administrator, Check Capture Supervisor, Check Capture Lead Operator, Check Capture Operator, or Card Administrator*) can install the OLB Application installation package. Administrator privileges are needed to install the OLB Application. It is highly recommended that users work with their Agency IT Administrator to complete installation of the OLB Application.

Do users need to have Windows Administrator privileges to install the OLB Application?

Yes, depending on an Agency's system and security set-up, most users will likely need to have Windows Administrator privileges. It is highly recommended for users to work with their Agency IT Administrator to complete installation of the OLB Application.

We have multiple users using the same workstation, and each user has a different login. Does the OLB need to be separately installed?

The OLB only needs to be installed once as it will install for all Windows profiles. However, the certificate will need to be installed for each Windows profile. To install the certificate, it is highly recommended for the Agency IT Administrator to use the **mmc.exe** approach to install the OLB Application for multiple users on a shared workstation. If you can't use the mmc.exe approach, then you can navigate to the "olb.otcnet.public.crt" file, double-click on it to view the certificate and then click the "Install Certificate..." button to run the Certificate Import Wizard. This allows you to import the certificate into the "Trusted Root Certification Authorities" certificate store for each Windows profile where the certificate is not installed.

Can a user with multiple roles, such as Check Capture Administrator, Check Capture Supervisor, Check Capture Operator, Card Administrator, or Card Operator download and install the OLB Application and certificate?

Yes, a user must be a Check Capture Administrator or Card Administrator to download the OLB Application. However, any Check Capture user (i.e. Check Capture Administrator, Check Capture Supervisor, Check Capture Lead Operator, Check Capture Operator) or Card Processing user (Card Administrator, Card Operator) can install the OLB Application if they have Windows Administrator privileges. It is highly recommended for users to work with their Agency IT Administrator if they do not have Windows Administrator privileges.

With OLB 1.3.0 and higher, The OLB certificate is included in the OLB installer file. You do not have to separately install the OLB certificate.

Can my agency install and manage its own Java version?

Yes, with OLB 2.5.0 and higher, the OLB and Offline will unbundle Java (JRE) from their installation packages. OLB and Offline will require a separate JRE, allowing (and requiring) agencies to install and manage their own JRE versions on their users' workstations.

Create an OLB Profile

Who needs to create an OLB profile?

All Check Processing, Check Capture, and Card Processing users need to create an OLB profile.

After the OLB Application is installed, will users be able to create and import their own OLB credentials?

Yes, once the OLB Application and certificate are installed, users can create and import their own OLB credentials.

Does each user need to create an OLB profile on a shared workstation?

Yes, each user needs to create their own individual OLB profile to access and use the OLB Application on the shared workstation.

Does my OLB password need to match my OTCnet Online password?

No, OLB passwords do not need to match users' OTCnet Online passwords.

Do I need to change my OLB password if I changed my OTCnet Online password?

No, OLB passwords are not linked to users' OTCnet Online passwords.

How often do I need to change my OLB password?

OLB passwords never expire. They do not need to be updated.

Start the OLB

Is there a way to turn off the message (Java Applets/OLB Dialog Box) that pops up every time we login on the other terminal?

The dialog box does not appear for Card Processing, Google Chrome, or Microsoft Edge users. The **Java Applets/OLB dialog Box** will continue to appear for Check Capture and Check Processing users who use Internet Explorer and have not yet installed the OLB Application.

Once the OLB Application is installed, users can select the **OLB radio button** from the **Java Applets/OLB Dialog Box**. When the **OLB radio button** is selected, the **Java Applets/OLB Dialog Box** will no longer appear. Users should continue to select the **Java Applets radio button** until the OLB Application has been installed.

Do I need the OLB to configure a check capture or card terminal?

Yes, if you are configuring a check capture or card terminal, you must first start the OLB Application. If you have not started the OLB Application, you will receive the following message: "Terminal detection failed. Please ensure that the OLB Application is running."

When do I need to log into the OLB Application?

The OLB Application is required to perform Card Processing, Check Capture, Check Processing and Terminal Configuration Operations. If you are a Check Capture Administrator, Check Capture Supervisor, Check Capture Lead Operator, Check Capture Operator, Card Administrator, or Card Operator, the OLB Application must be started on the terminal to performing these operations. There is no "timeout" with the OLB Application (i.e., a suspension or break in OTCnet activity). Therefore, the OLB Application will stay connected unless one of the following occurs:

- The user logs out of the workstation (Windows session)
- The terminal is turned off, restarted, or rebooted
- The user stops the OLB Application on the terminal

SECTION VII: ADDITIONAL RESOURCES

Helpful Links

OTCnet FAQs

<https://www.fiscal.treasury.gov/otcnet/faqs.html>

OTCnet OLB Information and Resources

<https://www.fiscal.treasury.gov/otcnet/local-bridge-information-resources.html>

OTCnet System Requirements and Reference Guide

<https://fiscal.treasury.gov/files/otcnet/otcnet-sys-req.pdf>

OTCnet OLB Fact Sheet

[https://www.fiscal.treasury.gov/files/otcnet/OTCnetLocalBridge\(OLB\)FactSheet.pdf](https://www.fiscal.treasury.gov/files/otcnet/OTCnetLocalBridge(OLB)FactSheet.pdf)

OTCnet OLB Information Webinar Presentation

[https://www.fiscal.treasury.gov/files/otcnet/OTCnetLocalBridge\(OLB\)WebinarPresentation.pdf](https://www.fiscal.treasury.gov/files/otcnet/OTCnetLocalBridge(OLB)WebinarPresentation.pdf)

OTCnet OLB FAQs Sheet

[https://www.fiscal.treasury.gov/files/otcnet/OTCnetLocalBridge\(OLB\)RolloutFrequentlyAskedQuestions.pdf](https://www.fiscal.treasury.gov/files/otcnet/OTCnetLocalBridge(OLB)RolloutFrequentlyAskedQuestions.pdf)

Training Resources

Role Web-Based Training

https://www.fiscal.treasury.gov/otcnet/training/wbt/content/course_OTC/index.htm

All Training Modules

https://www.fiscal.treasury.gov/otcnet/training/wbt/content/course_OTC/menu_all.htm

YouTube Videos

<https://www.youtube.com/channel/UCreZr4h8sW9zB6IEoKwBqRQ/videos>

Printable Job Aids (PJAs) and Videos to Review

Download Firmware PJA

https://fiscal.treasury.gov/otcnet/training/wbt/content/resources/PJA/pja_download_firmware.pdf

Install Firmware PJA

https://fiscal.treasury.gov/otcnet/training/wbt/content/resources/PJA/pja_install_firmware.pdf

Start and Stop the OTCnet Local Bridge (OLB) Application PJA

https://fiscal.treasury.gov/otcnet/training/wbt/content/resources/PJA/pja_start_stop_olb.pdf

Start and Stop the OTCnet Local Bridge (OLB) Application Video

<https://youtu.be/fw8HHfWVmUI?list=TLGGYwa7OthCxDAYNDA1MjAyMg>

Download the OTCnet Local Bridge (OLB) Application PJA

https://fiscal.treasury.gov/otcnet/training/wbt/content/resources/PJA/pja_download_olb.pdf



OTCnet Local Bridge (OLB) Configuration and Setup Guide

Install the OTCnet Local Bridge (OLB) Certificate PJA

https://fiscal.treasury.gov/otcnet/training/wbt/content/_resources/PJA/pja_install_olb_certificate.pdf

Install the OTCnet Local Bridge (OLB) Application PJA

https://fiscal.treasury.gov/otcnet/training/wbt/content/_resources/PJA/pja_install_OLB.pdf

Create the OTCnet Local Bridge (OLB) Profile PJA

https://fiscal.treasury.gov/otcnet/training/wbt/content/_resources/PJA/pja_create_olb_profile.pdf

Create the OTCnet Local Bridge (OLB) Profile Video

<https://youtu.be/hrFsaPbzbVc?list=TLGGNnwVwjmLxfMyNDA1MjAyMg>

Import OTCnet Local Bridge (OLB) Credentials PJA

https://fiscal.treasury.gov/otcnet/training/wbt/content/_resources/PJA/pja_import_olb_credentials.pdf

Import OTCnet Local Bridge (OLB) Credentials Video

<https://youtu.be/J5IYV4I0bdc?list=TLGGvHrEM-qzB7gyNDA1MjAyMg>

Configure a Check Capture Terminal PJA

https://fiscal.treasury.gov/otcnet/training/wbt/content/_resources/PJA/pja_configure_a_chk_term.pdf

Log into OTCnet Online PJA

https://fiscal.treasury.gov/otcnet/training/wbt/content/_resources/PJA/pja_log_on_otcnet.pdf

User Guides

https://www.fiscal.treasury.gov/otcnet/training/wbt/content/course_OTC/library.htm



OTCnet Local Bridge (OLB) Configuration and Setup Guide

SECTION VIII: ADDITIONAL SUPPORT

For further assistance, reach out to the following support staff:

OTCnet Deployment Team

Telephone: 1-866-945-7920, option 4

Email: FiscalService.OTCDeployment@citi.com

Please contact the Deployment Team if your agency is currently in the OLB rollout testing phase and you need assistance with OLB testing.

OTCnet Customer Support Team

Telephone: 1-866-945-7920, option 2

Email: FiscalService.OTCChannel@citi.com

Please contact Customer Support if your agency has successfully tested the OLB Application and you need assistance, or if you have any general questions.