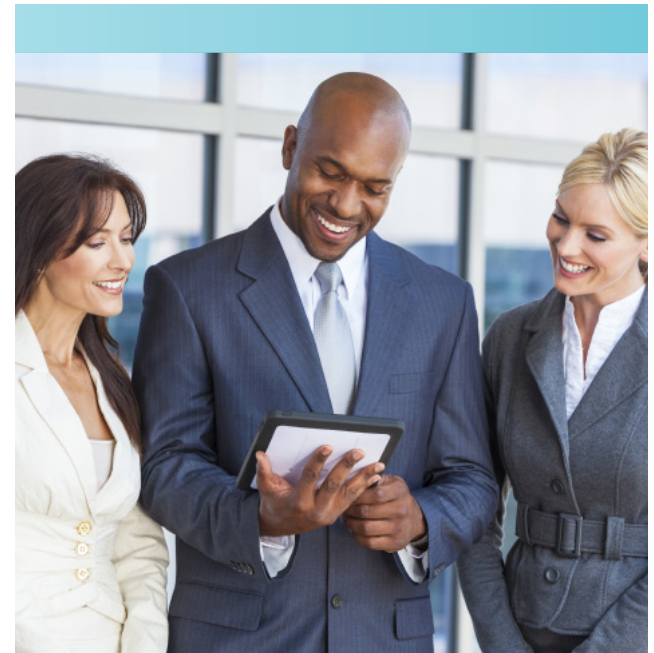




The American Express Corporate Card is widely accepted, both nationally and internationally, and can be used to purchase almost anything around the world. No matter where you are, our assistance and service are just a phonecall away.

Contact information

For any questions relating to your American Express Card or the 2018 fee structure call **0860 102 191**. Alternatively, visit **americanexpress.co.za** for more details.



American Express® Card fees 2018

Your American Express® Corporate Card gives you more than just exceptional service and great value.

You also have access to the American Express Expense Management Programme which is the ideal tool for simplifying corporate expense management.

The aim of the programme is to address key objectives for corporate clients, including:

- Gaining visibility of total business spend.
- Ensuring the correct expense controls are in place.
- Saving money and maximising supplier savings.
- Reducing paperwork, saving time and lowering the cost of invoice processing.
- Streamlining employee responsibilities.
- Managing expense management programmes across different countries.

Remember, your American Express Corporate Gold Card offers free access to local and international Bidvest Premier Lounges within South Africa.

As an American Express Cardmember you get automatic basic local and international travel insurance when you purchase your travel ticket(s) on your American Express® Card. Call 0860 885 503 for embassy letters, benefits and exclusions, travel policy documents, topup cover and more information.

To sign up for free eStatements and electronic management reports send your details to corpcardservicing@nedbank.co.za.

All fees include VAT and are effective from 1 April 2018.

Terms and conditions apply.

American Express Card fees 2018

ANNUAL SERVICE FEES ¹

One primary Card	R746,49
Two to 25 Cards (per Card)	R655,70
26 plus Cards (per Card)	R524,56
100 + Cards (per Card)	R524,56
Once-off initiation fee	R746,49
Linked PTC	R474,12
Membership Rewards™ enrolment and linkage	R254,21
Membership Rewards™ enrolment and linkage accrued to the company**	R443,86

Corporate Gold Card

Corporate Green Card

BTA Card

Corporate Purchasing Card

TRANSACTION	FEE AMOUNT
PURCHASES	
Credit Card transaction fee	Free
VALUE-ADDED SERVICES	
Credit facility fee*	Free
Transactional SMS notification	Free
Online reporting and data services ⁶	Pricing dependent on solution
Historical statement request ***	Free
DEPOSITS	
Cash (over the counter and at Nedbank ATM)	R30,26 plus R1,51 per R100,00
Cheque (over the counter and at Nedbank ATM)	R30,26
CASH WITHDRAWALS	
Over the counter at Nedbank branch ²	R50,44 plus R1,51 per R100,00
Nedbank ATM and SSD ²	R5,04 plus R1,51 per R100,00
Another bank's ATM ²	R13,11 plus R1,51 per R100,00
International ATM ^{2,3}	R50,44 plus R1,51 per R100,00
TRANSFERS AND PAYMENTS	
Interaccount transfer ⁴	R4,04
Electronic payment ⁴	R8,07
Branch interaccount transfer	R60,53
NOTIFICATIONS	
Internet payment – SMS	R1,01
Internet payment – email	R0,91
Internet payment – fax	R6,05

TRANSACTION	FEE AMOUNT
BALANCE ENQUIRIES	
Nedbank ATM and SSD ²	Free
Another bank's ATM ²	R6,05
Over the counter	R6,05
Nedbank Internet Banking	Free
STATEMENT ENQUIRIES	
Nedbank ATM	Free
Nedbank SST	Free
Emailed/Posted statement	Free
OTHER FEES	
Dishonoured payment	R151,32
Tracing	Up to R503,38
Incorrectly disputed transaction (local or international)	R221,93
OTHER CHARGES	
Crossborder transaction fee – American Express ³	2%
Card replacement	Free
Face-to-face card delivery	Free
Same-day card delivery	R403,51
Crossborder delivery **** ⁷	R756,58
Special clearance of cheque deposit in branch	R110,96
Monthly user internet banking subscription ⁵	R16,14
Monthly business internet banking subscription ⁵	Free

* Subject to negotiation.

** Where Membership Rewards are accrued to the company, a fee of R443,86 per linked Card is applicable.

*** Copies of statements older than three months may be charged at a fee of R7,57 per statement.

**** Crossborder and elsewhere – R756,58, including Scotland, Wales and Ireland. London – R 453,95.

¹ Annual service fees are charged per Card in arrears and an initiation fee, for the same amount, will be applied on account opening.

² Not applicable to BTA.

³ All foreign exchange transactions attract a crossborder transaction fee.

⁴ Includes transfers and payments through SSTs, Nedbank Internet Banking, Cellphone Banking, WAP, SMS Banking SSDs and Telephone Banking.

⁵ Internet banking fee charged only if this is the sole Nedbank account.

⁶ Available on all American Express Cards. Pricing dependent on online reporting and data service solutions.

⁷ Subject to change.

ATM – automated teller machine

APO – automatic payment order

BTA – Business Travel Account

PTC – personal travel card

SSD – self-service device

SST – self-service terminal