



Acceptable Recyclables



Printed Paper



Newspaper&insert



Magazines



Office Paper



Envelopes



Soft Cover Books

Printed Paper



Phone Books



Junk Mail



Catalogues



Brochures



Calendars

Paper Packaging



Cardboard



Boxboard



Kraft Paper



Paper Cores



Moulded Pulp

Plastic



PET Bottles&Jars



PET Thermoforms



PET Clamshells



PET Jars



PP Bottles

Plastic



HDPE Bottles



HDPE Jars



HDPE Tubs and Lids



HDPE Pails



PE Bags

Metal



Aluminum Beverage Can



Steel food and beverage cans

Glass



Clear and Coloured Bottles and Jars



Recycling World has Changed!

The items on this page are the only items we wish to see in your recycling bin. We can collect, process, and sell these materials day in and day out and you can feel good about it.






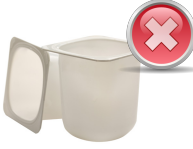
Placing the wrong items in the recycling bins increases the cost of the program, lowers the value of the remaining recyclables, and affects the safety of our employees. Just because something is made of paper, metal, plastic, or glass, does not mean it is recyclable. Make sure you see it listed in the latest acceptable list posted on our web site, or your calendar.

If you are unsure, please ask us at info@bra.org or 1-800-265-9799, or visit www.bra.org



Recent Program Changes



<p>Cartons</p>		<p>While cartons are a defined commodity by the ISRI Specification circular, they are a laminated product that needs to be kept separate from other commodities otherwise they become a contamination issue. Because of the shape shifting ability (2D vs 3D) this make them hard to separate even with the latest optical technology. Markets are not stable, price is low while handling costs are high. The material yield is approximately 58% as the plastic and aluminum layers are typically not recycled. The end product is downcycled into disposable paper products like paper napkins and toilet paper.</p>
<p>Aluminum Foil Products, Food Cans, and Aerosols</p>		<p>Aluminum cans are the most valuable commodity in the blue box program but the associated aluminum products such as foil, pie plates, food cans, and aerosols are not desired in the commodity. Foil disintegrates in the smelter, food cans add impurities, and aerosols cause fires. In the past when aluminum was sorted by hand it may have been feasible to separate. Today, most facilities rely on an eddy current to recover the aluminum and the machine cannot tell the difference between foil and cans.</p>
<p>Aerosol Containers</p>		<p>Some programs have accepted steel aerosol containers despite being classified as hazardous waste under regulation 347. They contribute to hundreds of fires in processing facilities every year, each jeopardizing the safety of the workers and they cause significant risks to the processing facility. Fires are the number one cause of loss of processing capacity in our industry.</p>
<p>Paint Cans</p>		<p>Empty paint cans are readily acceptable with the steel cans collected. The problem here is the industry is converting to plastic paint cans with a metal top which are not recyclable. The new containers are not easy for the consumer to tell apart from the old steel container.</p>
<p>Beverage Cups</p>		<p>Beverage cups have never been part of our program but because the word got out that we were testing them for a while people assumed they were recyclable. Beverage cups are a laminated product much like cartons and they are even more difficult to separate from the rest of the materials and recycle in the end in part because of the ink used on the outside of the cups.</p>
<p>Small Items</p>		<p>This is a new problem for us. In the 1990's everything was large and club pack sized. Today, everything is becoming individualized in small sizes of greater variety. The bottom line is we are essentially trying to sort out confettis and it is nearly impossible. Now that quality matters (markets want 99.5% pure material) anything below a certain size has to be screened out to purify the rest of the materials.</p>

Recommendation

Buy product packaged in readily recyclable products and/or use refillable containers for lunches to reduce overall waste generated.

Recommendation

Dispose of foil products and aluminum food cans (cat food) in waste bin. Consider other cooking methodologies or alternative packaging.

Recommendation

Dispose of these containers with your hazardous waste. Consider manual pumps over the use of propellants.

Recommendation

Buy your paint in metal paint cans otherwise return the cans to a hazardous waste depot.

Recommendation

Use a refillable mug. If you need the convenience, then place your old cup in the waste bin.

Recommendation

Anything smaller than 3 inches will contaminate our glass or they will be screened out and disposed of instead of being recycled. Use reusable containers instead.



Not-Acceptable Materials



Printed Paper



Wrapping Paper



Greeting Cards



Photographs



Hard Cover Books



Disposable Papers

Paper Packaging



Cartons



Paper Dinnerware



Gift Bags



Beverage Cups



Soiled Paper

Plastic



Prescription Bottles



Planters and Pots



Disposable Cups



Smoke Detectors



Fuel Cans

Plastic



Lawn Chairs



VHS Tapes



Zip Loc Bags



CDs and DVDs



Pesticide Bottles

Metal



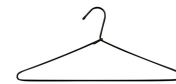
Aluminum Foil



Aerosol Containers



Peel n Eat Cans



Coat Hangers



Pots and Pans

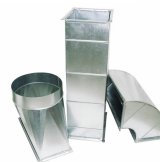
Metal



Plumbing Supplies



Piping



Duct Work



Eavestrough



Utensils

Glass



Lightbulbs



Fluorescent Bulbs



Drinking Glasses



Mirrors



Ceramic Dinnerware



Not-Acceptable Materials



Hazardous Items



Batteries



Needles



Ammunition



Fire Extinguishers



Propane Tanks

Leaf and Yard



Tree Leaves



Stones and Aggregate



Garden Hose



Lumber



Gasoline Can

Plastic



Shrink Wrap



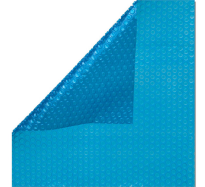
Expanded Foam



Bubble Wrap



Beverage Cups



Solar Blanket

Tanglers



Unbagged Paper



Christmas Lights



Clothing



VHS Tapes



Bale Twine

Small Items



Confetti



Plastic Lids



Metal Caps



Metal Lids



Small Bottle

What Were You Thinking Of?



Engine Parts



Bicycles



Scrap Metal



Bowling Ball



Biomedical Products

We cannot practically list all of the items we receive every day that are not part of the recycling program. The point is that we can only recycle materials that are desirable in the marketplace to invest in them to recycle them again. You can wish that an item is recyclable when it is clearly not at this time, it will still end up in the landfill. You have the power to choose what you buy as a consumer. If you value convenience over the environment, then be prepared to pay the full price to dispose of that convenience also. Choose and consume wisely, and remember that when in doubt, leave it out...of the blue bin.