

**Victorian Certificate of Education  
2017**

SUPERVISOR TO ATTACH PROCESSING LABEL HERE

STUDENT NUMBER           Letter

**GEOGRAPHY**  
**Written examination**

**Thursday 16 November 2017**

**Reading time: 3.00 pm to 3.15 pm (15 minutes)**

**Writing time: 3.15 pm to 5.15 pm (2 hours)**

**QUESTION AND ANSWER BOOK**

**Structure of book**

<i>Number of questions</i>	<i>Number of questions to be answered</i>	<i>Number of marks</i>
8	8	80

- Students are permitted to bring into the examination room: pens, pencils, highlighters, erasers, sharpeners, rulers, coloured pencils, water-based pens and markers.
- Students are NOT permitted to bring into the examination room: blank sheets of paper and/or correction fluid/tape.
- No calculator is allowed in this examination.

**Materials supplied**

- Question and answer book of 12 pages
- Data book
- Additional space is available at the end of the book if you need extra paper to complete an answer.

**Instructions**

- Write your **student number** in the space provided above on this page.
- All written responses must be in English.

**At the end of the examination**

- You may keep the data book.

**Students are NOT permitted to bring mobile phones and/or any other unauthorised electronic devices into the examination room.**

**Instructions**

Answer **all** questions in the spaces provided. Refer to the data book as indicated.

**Question 1** (7 marks)

- a. For the area of fieldwork you selected to investigate land use change, state the location and the associated research question. 1 mark

---

---

---

- b. Identify and justify one primary fieldwork technique and one secondary source that were used to investigate the selected area of fieldwork. 6 marks

- Primary fieldwork technique \_\_\_\_\_

---

---

---

---

---

- Secondary source \_\_\_\_\_

---

---

---

---

---

*Use Figures 1 and 2 on pages 2 and 3 of the data book when responding to Question 2.*

**Question 2** (5 marks)

- a.** Which category of land cover in map square A3 appears to have replaced large areas of dense forest? 1 mark

---

---

- b.** Shrub land in map square C1 has been extensively replaced by which **two** categories of land cover? 2 marks

---

---

---

---

- c.** Which category of land cover had the largest percentage increase between 1973 and 2000? 1 mark

---

- d.** Which category of land cover had the largest percentage decrease between 1973 and 2000? 1 mark

---







**Question 5** (8 marks)

- a. Explain **one** reason why some geographers believe that Malthus's ideas on future population growth are still relevant today. 4 marks

---

---

---

---

---

---

---

---

---

---

- b. Explain **one** reason why some geographers believe that Malthus's ideas on future population growth are **not** relevant today. 4 marks

---

---

---

---

---

---

---

---

---

---







*Use Figure 4 on page 5 of the data book when responding to part a. of Question 8.*

**Question 8** (9 marks)

- a. Identify and justify **one** numbered Malawi district that has a strong spatial association between population density and the distribution of health facilities. 3 marks

---

---

---

---

---

---

---

---

- b. Discuss the effectiveness of **one** spatial technology, such as the Geographic Information Systems (GIS) data collected in Malawi, as a strategy in response to a population issue. 6 marks

---

---

---

---

---

---

---

---

---

---

---

---

---

---

---

---

---

---

---

---

---

---

---

---





**Victorian Certificate of Education  
2017**

**GEOGRAPHY**  
**Written examination**

**Thursday 16 November 2017**

**Reading time: 3.00 pm to 3.15 pm (15 minutes)**

**Writing time: 3.15 pm to 5.15 pm (2 hours)**

**DATA BOOK**

**Instructions**

A question and answer book is provided with this data book.

Refer to the data in this book for each question as indicated in the question and answer book.

The data contained in this book is drawn from current real-world case studies.

**Students are NOT permitted to bring mobile phones and/or any other unauthorised electronic devices into the examination room.**

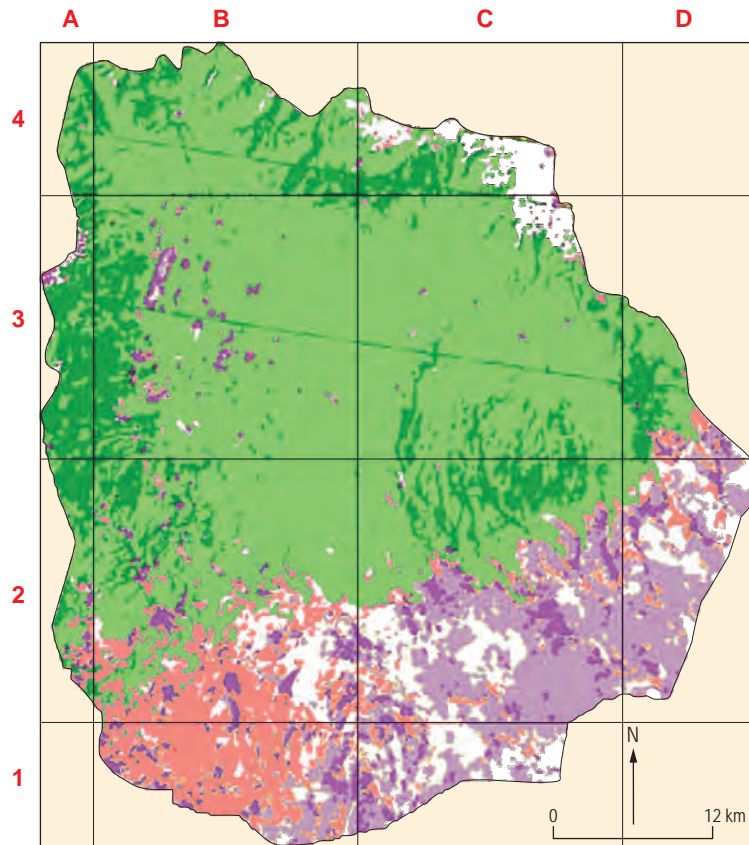
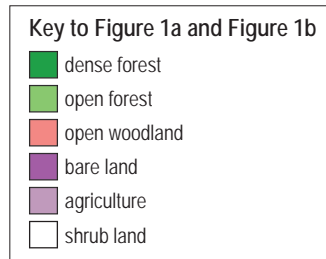


Figure 1a: Land cover, Harena District, Ethiopia, 1973



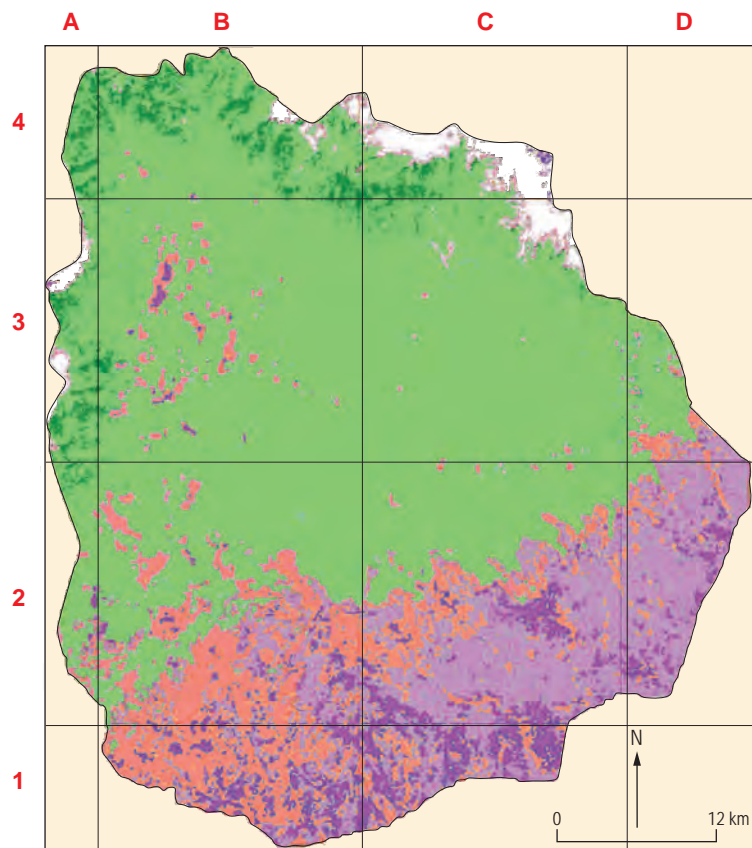
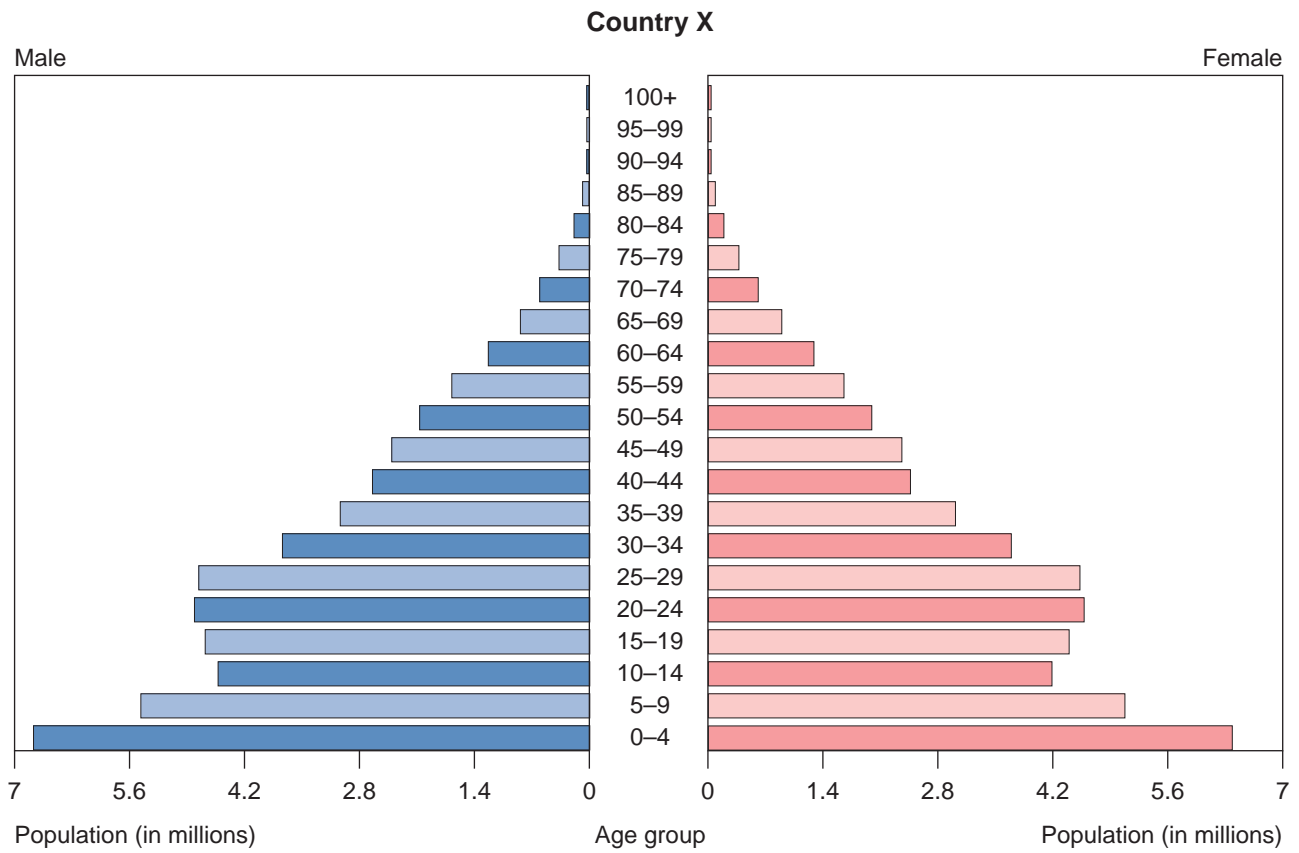


Figure 1b: Land cover, Hareenna District, Ethiopia, 2000

Land use land class types	Area in 1973		Area in 1986		Area in 2000	
	ha	%	ha	%	ha	%
dense forest	65 577.7	28.0	35 767.5	15.0	13 008.3	6.0
open forest	82 773.9	35.0	113 403.8	48.0	131 150.3	56.0
open woodland	20 222.1	9.0	12 589.5	5.0	20 674.4	9.0
bare land	8 343.7	4.0	22 751.9	10.0	11 417.5	5.0
agriculture	33 967.9	14.0	22 542.3	10.0	50 522.3	21.0
shrub land	24 450.0	10.0	28 383.5	12.0	8 607.0	4.0
<b>Total</b>	<b>235 335.3</b>	<b>100</b>	<b>235 335.3</b>	<b>100</b>	<b>235 335.3</b>	<b>100</b>

Figure 2: Changes to land cover, Hareenna District, Ethiopia

Source (Figures 1a, 1b and 2): Netsanet Deneke Morie, 'Land use and land cover changes in Hareenna forest and surrounding area, Bale Mountains National Park', MSc thesis, Addis Ababa University, June 2007, pp. 41, 44 and 48



Source: US Census Bureau, International Programs, International Data Base

Figure 3: Population structure, Country X, 2017



### Background information

Malawi is a small country in southern Africa, recognised by international organisations as one of the world's poorest countries. Geographic Information Systems (GIS) data is now being collected, processed and interpreted to develop responses to issues and challenges faced by the population.

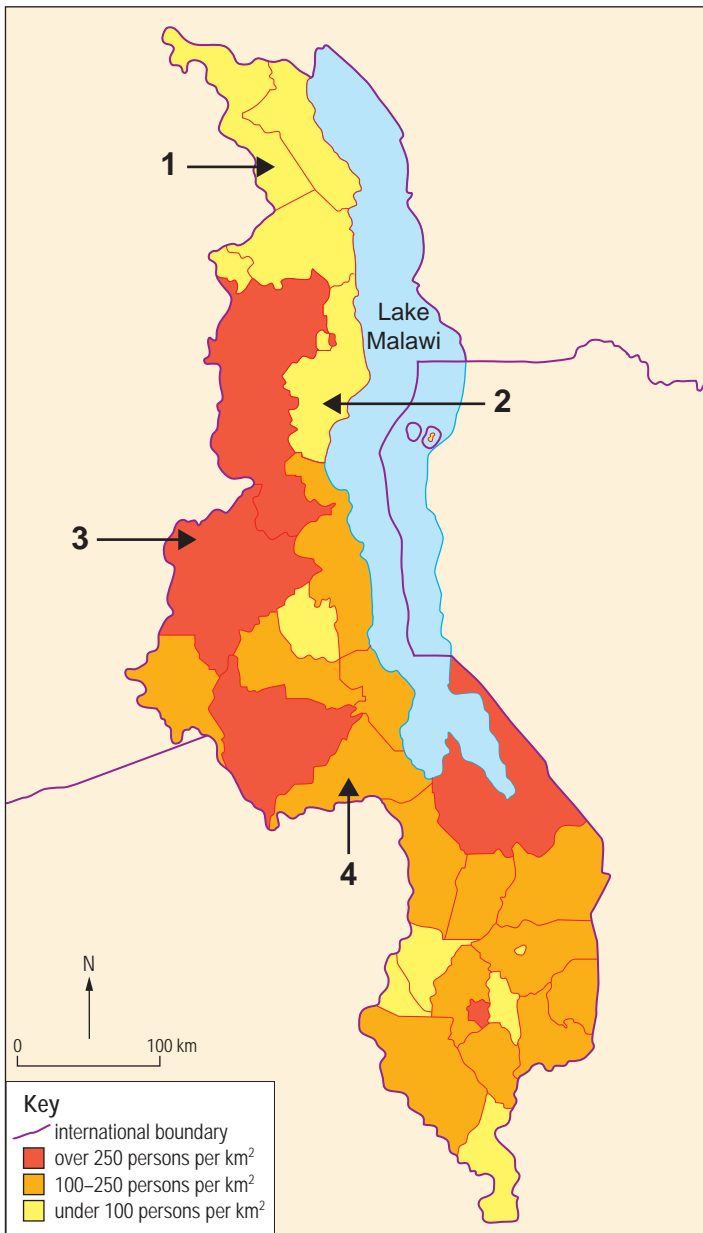


Figure 4a: Population density by district, Malawi

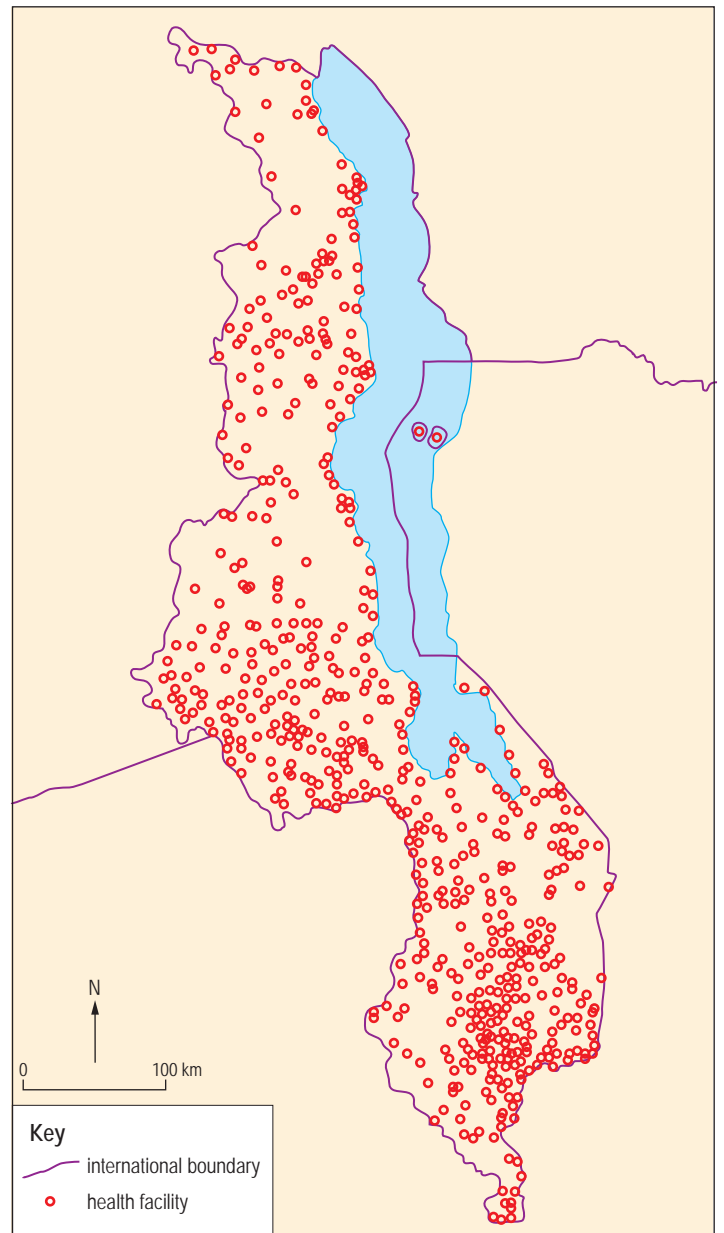


Figure 4b: Health facilities, Malawi

Source (Figures 4a and 4b): © OpenStreetMap contributors, masdap