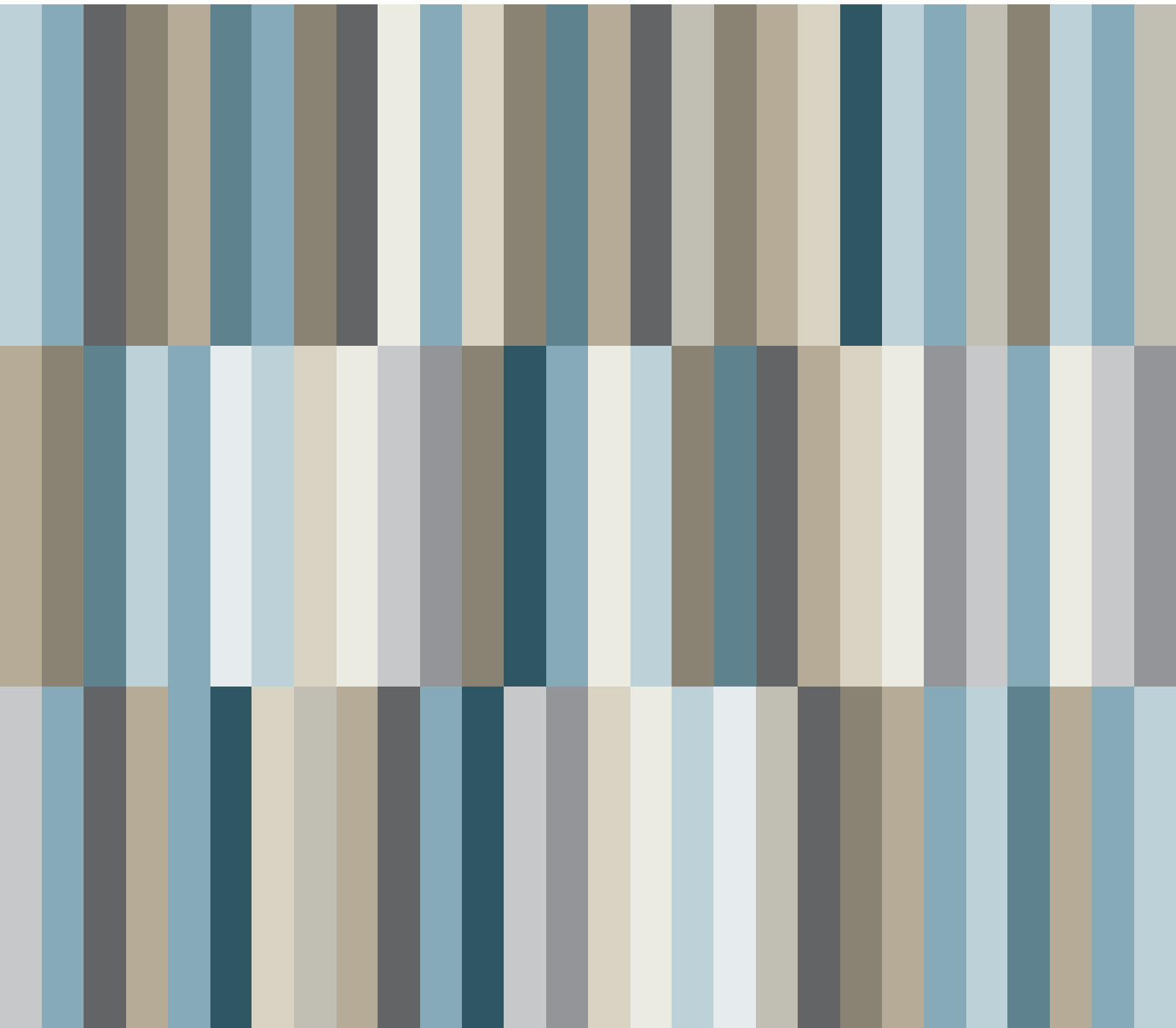


2020 Publications and Products

INFORMATION FOR INSTITUTIONS





2020 Pricing

for Institutions

Important Sales Tax Information

AMA is required by law to collect sales tax on orders shipped to states where AMA has economic nexus. If you are shipping to any of these states, the appropriate charges will be added to your total order and displayed on your final order confirmation.

For states imposing sales or use taxes, your purchase is subject to use tax unless it is specifically exempt from taxation. Your purchase is not exempt merely because it is made over the Internet or by other remote means. Some states require each purchaser to report any taxable purchase that was not taxed and to pay use tax on the purchase. The tax may be reported and paid on the state's individual income tax return or consumer use tax return. Details of how to file these returns may be found at the websites of your respective taxing authorities.

JAMA Network Site Licenses

Site licenses provide the widest possible access, offering your users seamless access when logged in to your institution's network — either at work or remotely.

Give your patrons convenient access to the high-impact medical information and commentary they need — when and where they need it.

- Includes perpetual access to licensed content.
- Allows simultaneous, seamless access to leading medical information.
- Includes online-only supplements and Online First articles.
- Custom solutions available for multisite organizations, consortia, national health systems, membership organizations, multinational corporations, and other nonstandard organizations.
- Institutions may register an unlimited number of IP addresses.
- JAMA Network publications support access via Athens and Shibboleth.
- Print copies of any title are available at a discounted rate with a site license purchase.
- Institutional users are eligible for free CME activities that span specialties and offer *AMA PRA Category 1 Credit*™

FEATURES INCLUDE

Complete Online Access Back to 1998

Active site license subscribers will have access to all content published in the licensed journals going back to January 1998.

Online First

See page 7 for a full list of online features.

Citation Manager

Output citation data to RIS (Zotero), EndNote, BibTex, Medlars, Mendeley, ProCite, RefWorks, Reference Manager.

COUNTER-compliant Usage Statistics

Track your institution's usage with COUNTER-compliant usage statistics, included with your site license.

Multimedia Index

View animated figures, interactives, and videos that enhance the learning process.

Digital Preservation

JAMA Network has partnered with CLOCKSS to ensure that our content remains available to the global research community.

PowerPoint Image Downloads

All JAMA Network sites allow readers to download images to PowerPoint slides with one click — useful for lectures and educational presentations.

Access for Developing Countries

JAMA Network journals participate in the World Health Organization's HINARI and AGORA initiatives, which provide free or nearly free access for institutions in low- and middle-income countries.

The JAMA+8 Site License Includes:*

- *JAMA*
- *JAMA Dermatology*
- *JAMA Internal Medicine*
- *JAMA Neurology*
- *JAMA Ophthalmology*
- *JAMA Otolaryngology–Head & Neck Surgery*
- *JAMA Pediatrics*
- *JAMA Psychiatry*
- *JAMA Surgery*

* *JAMA Oncology* and *JAMA Cardiology* sold separately.

2020 Site License Pricing

Academic / Research / Government

	JAMA	JAMA+3	JAMA+6	JAMA+8	JAMA Oncology*	JAMA Cardiology*
Tier D3	\$14,830	\$23,394	\$27,550	\$29,030	\$5,380	\$5,380
Tier D2	\$11,589	\$18,259	\$21,510	\$22,681	\$4,244	\$4,244
Tier D1	\$9,768	\$15,387	\$18,135	\$19,118	\$3,576	\$3,576
Tier C	\$4,301	\$6,798	\$8,011	\$8,439	\$1,615	\$1,615
Tier B	\$2,406	\$3,801	\$4,482	\$4,725	\$924	\$924
Tier A2	\$1,313	\$2,067	\$2,459	\$2,583	\$503	\$503
Tier A1	\$919	\$1,443	\$1,706	\$1,804	\$353	\$353

See Important Sales Tax Information on page 10

*JAMA Oncology and JAMA Cardiology sold separately.

TIER DESCRIPTIONS

Tier D3

- Universities with a single medical school and 3-5 inpatient care medical centers and/or hospitals (that share e-resources with the University)
- Universities with a DO and MD school (and no inpatient care facilities that share e-resources with the library)
- Universities with two MD or two DO medical schools (and no inpatient care facilities that share e-resources with the library)
- Nonprofit research facilities with 1201-2000 research staff

Tier D2

- Universities with a single medical school and 1-2 inpatient care medical center(s) or hospitals (that share e-resources with the University)
- Nonprofit research facilities with 801-1200 research staff

Tier D1

- Universities with a single medical school (and no inpatient care facilities that share e-resources with the library)
- Nonprofit research laboratories with 301-800 research staff

Tier C

- Universities with practical health science related doctoral programs (PharmD, PsyD, DHSc)
- Masters colleges with practical/applied health science related programs (MSN, MHSc)
- Nonuniversity-affiliated health specialty school (pharmacy, anesthesiology, physician assistance)
- National government departments and agencies (excludes hospitals, hospital systems, and all patient care facilities)
- Nonprofit research laboratories with 101-300 research staff
- Postbaccalaureate premed programs

Tier B

- Masters colleges without practical/applied health-related programs (nutrition, biology)
- Baccalaureate colleges with practical health science programs (premed, BSN, medical assistant)
- Alternative health-related professional schools (Eastern medicine, massage therapy, nutrition, chiropractic colleges)

- Private foundations and charitable organizations (excludes hospitals, hospital systems, and patient care facilities)
- Nonprofit research laboratories with up to 100 research staff

Tier A2

- Multicampus associate and community colleges with fewer than 5 campuses
- Single-site community colleges with more than 5000 students and specialty health programs
- Baccalaureate colleges with no practical/applied health science programs (health care administration, biology)
- Multinational law, brokerage, and media companies

Tier A1

- Law schools
- High schools
- Public libraries with one location
- Single-campus associate and community colleges with fewer than 5000 full-time students

Please Note

- For universities with more than 5 affiliated inpatient care medical center or hospital locations, please contact your sales representative for additional pricing.
- For universities with collaborative or joint medical schools that offer first- and second-year medical school courses, please contact your sales representative for additional pricing.
- Hospitals located on a medical school campus are counted as a hospital location unless electronic IP access can be restricted to the university site only.
- Academic institutions with research affiliations with for-profit companies must disclose affiliations. Additional charges may apply.
- For public libraries with more than one location, please contact sales representative for additional pricing.
- Alumni access is available upon request.

2020 Site License Pricing

Hospital

	JAMA	JAMA+3	JAMA+6	JAMA+8	JAMA Oncology*	JAMA Cardiology*
Tier HE2	\$12,674	\$20,014	\$23,593	\$24,865	\$4,667	\$4,667
Tier HE1	\$8,449	\$13,355	\$15,716	\$16,574	\$3,111	\$3,111
Tier HD	\$4,911	\$7,765	\$9,121	\$9,629	\$1,844	\$1,844
Tier HC	\$3,311	\$5,233	\$6,159	\$6,494	\$1,242	\$1,242
Tier HB	\$2,601	\$4,125	\$4,839	\$5,106	\$998	\$998
Tier HA2	\$1,691	\$2,664	\$3,150	\$3,320	\$650	\$650
Tier HA1	\$1,261	\$1,988	\$2,351	\$2,475	\$484	\$484

See Important Sales Tax Information on page 10

*JAMA Oncology and JAMA Cardiology sold separately.

TIER DESCRIPTIONS

Tier HE2

- Hospital systems with 8-11 hospitals

Tier HE1

- Hospital systems with 4-7 hospitals
- Single hospital with 11-20 affiliated clinics

Tier HD

- Hospital systems with 2-3 hospitals
- Single-site hospitals with 801-1100 staffed beds

Tier HC

- Single hospitals with 501-800 staffed beds

Tier HB

- Single hospitals with 251-500 staffed beds

Tier HA2

- Single hospitals with 121-250 staffed beds

Tier HA1

- Single hospitals with 120 or fewer beds

Nontiered

- Hospital systems with more than 12 hospitals
- Large physician practices

Please Note

- All medical schools that are located within hospitals must use the academic rates.
- If a research facility is within a hospital, the site license cost may be higher.

JAMA Network Backfiles Pricing

Academic / Research / Government

Tiered Pricing Rates

JAMA Network Backfiles are available as a one-time purchase, which includes perpetual access rights to every issue of *JAMA* and the specialty journals published from 1883 through 1997. Maintenance fees are waived with an active site license.

This pricing applies to institutions that fall within tiers D3 through HA1. Other institutions are encouraged to contact a sales representative for a quote: sales@jamanetwork.com.

All prices in US dollars.

	Full Package	JAMA	Specialty Journals Only
Tier D3	\$70,000	\$59,500	\$17,500
Tier D2	\$56,000	\$47,600	\$14,000
Tier D1	\$47,200	\$40,120	\$11,800
Tier C	\$18,000	\$15,300	\$4,500
Tier B	\$11,100	\$9,435	\$2,775
Tier A2	\$6,000	\$5,100	\$1,500
Tier A1	\$4,200	\$3,570	\$1,050

See Important Sales Tax Information on page 10

TIER DESCRIPTIONS

Tier D3

- Universities with a single medical school and 3-5 inpatient care medical centers and/or hospitals (that share e-resources with the University)
- Universities with a DO and MD school (and no inpatient care facilities that share e-resources with the library)
- Universities with two MD or two DO medical schools (and no inpatient care facilities that share e-resources with the library)
- Nonprofit research facilities with 1201-2000 research staff

Tier D2

- Universities with a single medical school and 1-2 inpatient care medical center(s) or hospitals (that share e-resources with the University)
- Nonprofit research facilities with 801-1200 research staff

Tier D1

- Universities with a single medical school (and no inpatient care facilities that share e-resources with the library)
- Nonprofit research laboratories with 301-800 research staff

Tier C

- Universities with practical health science related doctoral programs (PharmD, PsyD, DHSc)
- Masters colleges with practical/applied health science related programs (MSN, MHSc)
- Nonuniversity-affiliated health specialty school (pharmacy, anesthesiology, physician assistance)
- National government departments and agencies (excludes hospitals, hospital systems, and all patient care facilities)
- Nonprofit research laboratories with 101-300 research staff
- Postbaccalaureate premed programs

Tier B

- Masters colleges without practical/applied health-related programs (nutrition, biology)
- Baccalaureate colleges with practical health science programs (premed, BSN, medical assistant)
- Alternative health-related professional schools (Eastern medicine, massage therapy, nutrition, chiropractic colleges)

- Private foundations and charitable organizations (excludes hospitals, hospital systems, and patient care facilities)
- Nonprofit research laboratories with up to 100 research staff

Tier A2

- Multicampus associate and community colleges with fewer than 5 campuses
- Single-site community colleges with more than 5000 students and specialty health programs
- Baccalaureate colleges with no practical/applied health science programs (health care administration, biology)
- Multinational law, brokerage, and media companies

Tier A1

- Law schools
- High schools
- Public libraries with one location
- Single-campus associate and community colleges with fewer than 5000 full-time students

Please Note

- For universities with more than 5 affiliated inpatient care medical center or hospital locations, please contact your sales representative for additional pricing.
- Hospitals located on a medical school campus are counted as a hospital location unless electronic IP access can be restricted to the university site only.
- Academic institutions with research affiliations with for-profit companies must disclose affiliations. Additional charges may apply.
- For public libraries with more than one location, please contact sales representative for additional pricing.
- Alumni access is available upon request.

JAMA Network Backfiles Pricing

Hospital

Tiered Pricing Rates

JAMA Network Backfiles are available as a one-time purchase, which includes perpetual access rights to every issue of *JAMA* and the specialty journals published from 1883 through 1997. Maintenance fees are waived with an active site license.

This pricing applies to institutions that fall within tiers D3 through HA1. Other institutions are encouraged to contact a sales representative for a quote: sales@jamanetwork.com.

All prices in US dollars.

	Full Package	JAMA	Specialty Journals Only
Tier HE2	\$54,000	\$45,900	\$13,500
Tier HE1	\$36,000	\$30,600	\$9,000
Tier HD	\$21,632	\$18,387	\$5,408
Tier HC	\$15,158	\$12,884	\$3,789
Tier HB	\$12,632	\$10,737	\$3,158
Tier HA2	\$8,211	\$6,979	\$2,053
Tier HA1	\$6,000	\$5,100	\$1,500

See Important Sales Tax Information on page 10

TIER DESCRIPTIONS

Tier HE2

- Hospital systems with 8-11 hospitals

Tier HE1

- Hospital systems with 4-7 hospitals
- Single hospital with 11-20 affiliated clinics

Tier HD

- Hospital systems with 2-3 hospitals
- Single-site hospitals with 801-1100 staffed beds

Tier HC

- Single hospitals with 501-800 staffed beds

Tier HB

- Single hospitals with 251-500 staffed beds

Tier HA2

- Single hospitals with 121-250 staffed beds

Tier HA1

- Single hospitals with 120 or fewer beds

Nontiered

- Hospital systems with more than 12 hospitals
- Large physician practices

Please Note

- All medical schools that are located within hospitals must use the academic rates.
- If a research facility is within a hospital, the site license cost may be higher.

2020 Institutional Print Pricing

Institutional Print Subscriptions

Institutional Print Only subscriptions are available as follows:

- 48 issues of *JAMA*
- 12 issues of *JAMA Cardiology*
- 12 issues of *JAMA Dermatology*
- 12 issues of *JAMA Psychiatry*
- 12 issues of *JAMA Internal Medicine*
- 12 issues of *JAMA Neurology*
- 12 issues of *JAMA Oncology*
- 12 issues of *JAMA Ophthalmology*
- 12 issues of *JAMA Otolaryngology – Head & Neck Surgery*
- 12 issues of *JAMA Pediatrics*
- 12 issues of *JAMA Surgery*

	US/CAN	AMS	EURO	GBP
JAMA	\$1,490	\$1,788	€ 1,601	£1,415
JAMA Cardiology	\$1,499	\$1,799	€ 1,611	£1,422
JAMA Dermatology	\$1,477	\$1,773	€ 1,589	£1,401
JAMA Psychiatry	\$1,577	\$1,892	€ 1,695	£1,495
JAMA Internal Medicine	\$1,254	\$1,505	€ 1,348	£1,190
JAMA Neurology	\$1,661	\$1,993	€ 1,785	£1,575
JAMA Oncology	\$1,199	\$1,439	€ 1,289	£1,137
JAMA Ophthalmology	\$1,458	\$1,749	€ 1,567	£1,382
JAMA Otolaryngology – Head & Neck Surgery	\$1,415	\$1,699	€ 1,522	£1,342
JAMA Pediatrics	\$1,282	\$1,539	€ 1,379	£1,216
JAMA Surgery	\$1,254	\$1,505	€ 1,348	£1,190

See Important Sales Tax Information on page 10

Please Note

- Any subscription that will be used within an institution must pay the institutional rate.
- All orders placed through subscription agents must include end-user information.

Back Issues

JAMA Network maintains a stock of 13 months of back issues. All available journals are subject to the following back-issue prices:

	US/CAN	AMS	EURO	GBP
JAMA	\$40	\$50	€45	£42
JAMA Network Specialty Journals	\$55	\$65	€56	£50

See Important Sales Tax Information on page 10

Issues older than 13 months may be available at the following back-issue dealer:

Arrow Co.

Email: gharrow@aol.com

Telephone: +1 215.227.3211

Fax: +1 215.221.0631

Subscription Account Numbers

Subscription account numbers can be found on the mailing label:

ACCOUNT NUMBER

#[08003430926]5#JAMUAIMS
042612270CB B

John Doe, MD
123 Main Street
Anycity, Province/State, Postal Code
Country

Missing-Issue Claims

All missing-issue claims will be honored subject to availability free of charge according to the following guidelines:

- Claims for all subscription orders must be filed within 3 months of the issue date.
- Claims filed after these periods but within the calendar year must be prepaid at the single-issue rate.

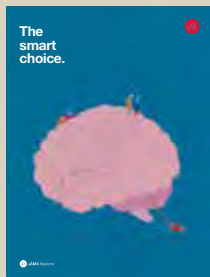
Journal Claim Information

When submitting a missing-issue claim, please include:

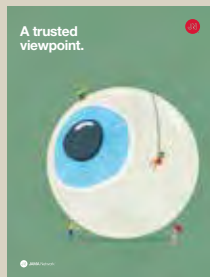
- Year of publication, volume, and issue
- Complete ship-to address
- Subscription number found on delivery label
- Agency reference number
- Complete payment information (ie, method, date, and amount remitted)
- Nature of claim (ie, missing issue or receipt of damaged issue)

Get a JAMA Network poster for your library!

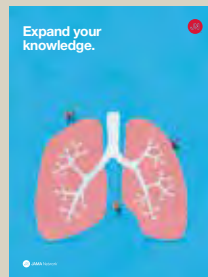
All posters measure 22.5 in wide by 30 in tall.



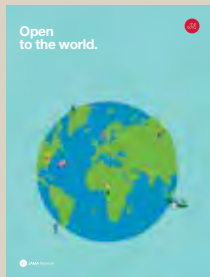
1. Smart



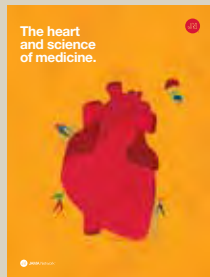
2. Viewpoint



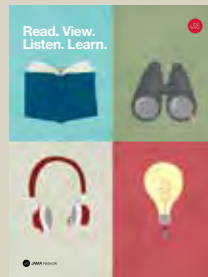
3. Knowledge



4. Open



5. Heart



6. Read View Listen Learn

Email sales@jamanetwork.com with your poster choice and your mailing address. *Available while supplies last.*

AMA PLAZA

330 North Wabash Ave
Ste 39300
Chicago, Illinois 60611 USA

CUSTOMER SERVICE

USA & Canada: 1 800.262.2350
Rest of World: +1 312.670.7827

SALES

Americas: +1 312.464.4371
Asia/Pacific: +1 312.464.4227

Europe/Middle East/Africa:
+1 312.464.2543
sales@jamanetwork.com