



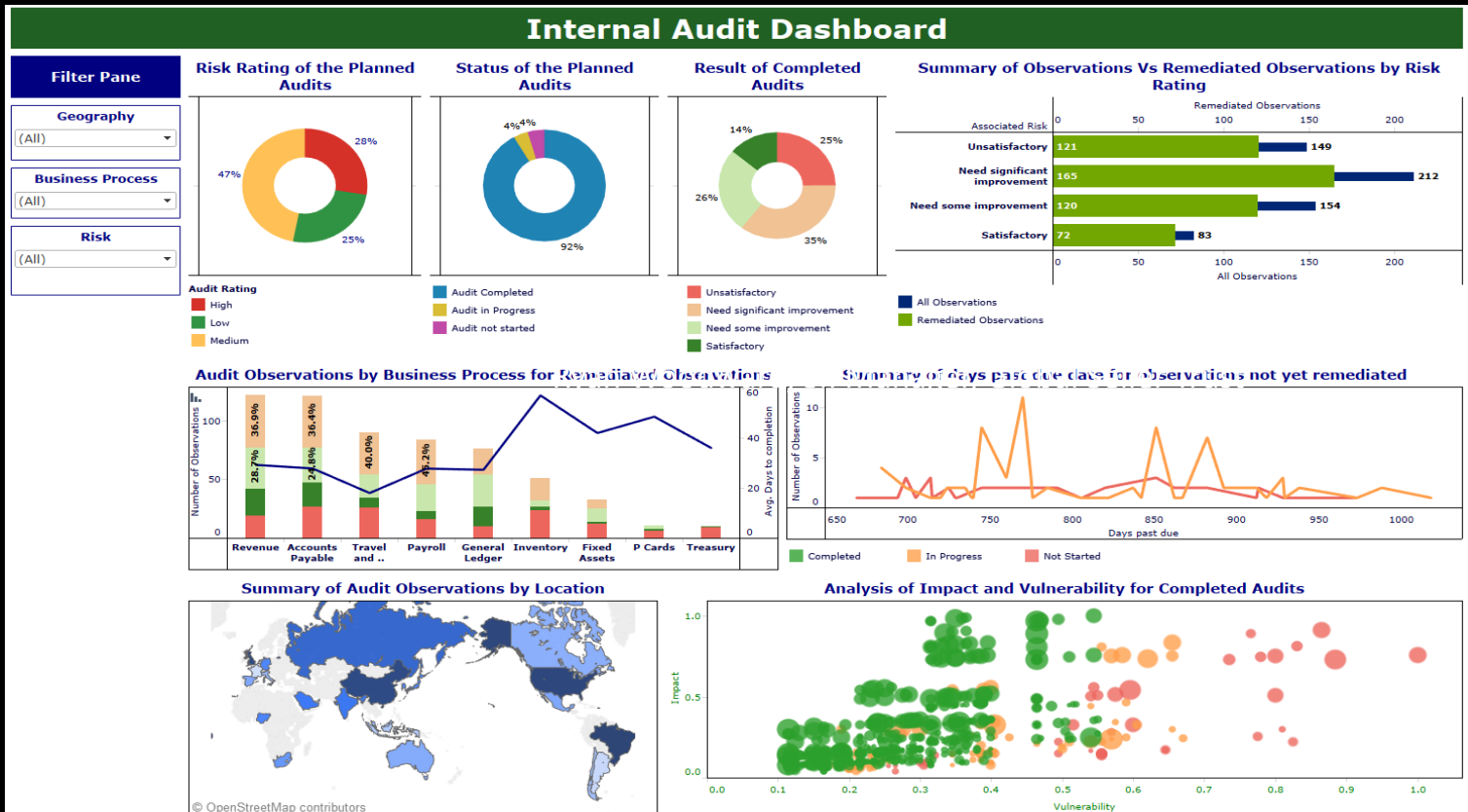
# Dashboard Reporting for Internal Audit

Jordan Lloyd  
Senior Manager  
Deloitte & Touche LLP

# CAE Dashboard

A high level summary of status of planned audits

A high level unified view showing risk ratings of the planned audits as derived from the risk assessment along with the status of the audits by completion, audit ratings, processes and location



## Value

- Consolidated view of all planned audits
- Allows drill down by risk rating, status, audit rating, process and location
- Eliminates the need for multiple reports

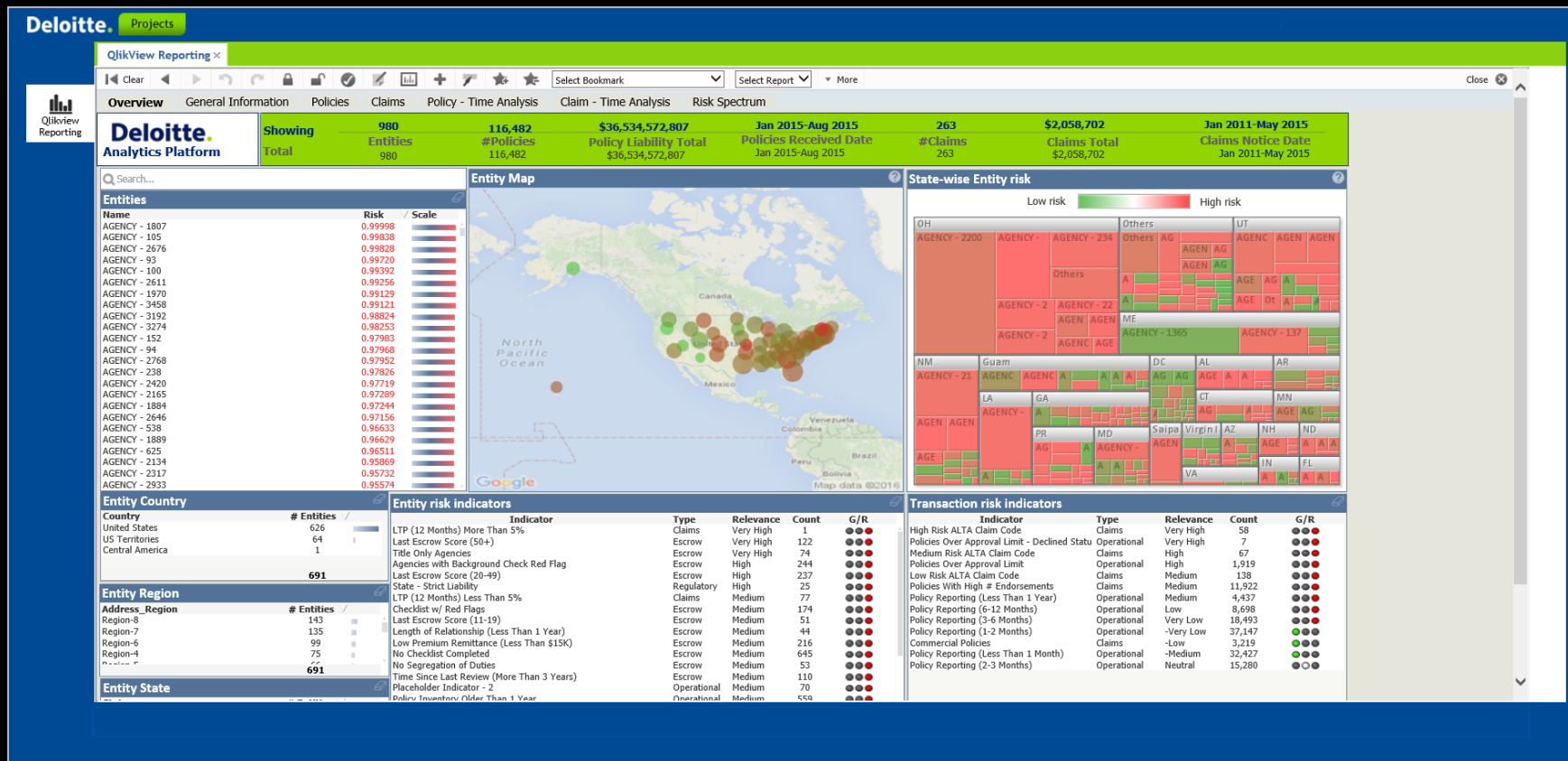
# 3<sup>rd</sup> Parties Risk Assessment

## Risk Score Aggregation and 3<sup>rd</sup> Parties Audit Prioritization

A set of over 80 risk metrics monitored across a portfolio of thousands of 3<sup>rd</sup> parties.

Weights and scores applied and aggregated at 3<sup>rd</sup> party level to identify target 3<sup>rd</sup> parties with the highest risk for audit prioritization.

Risks is further categorized to facilitate targeted review.



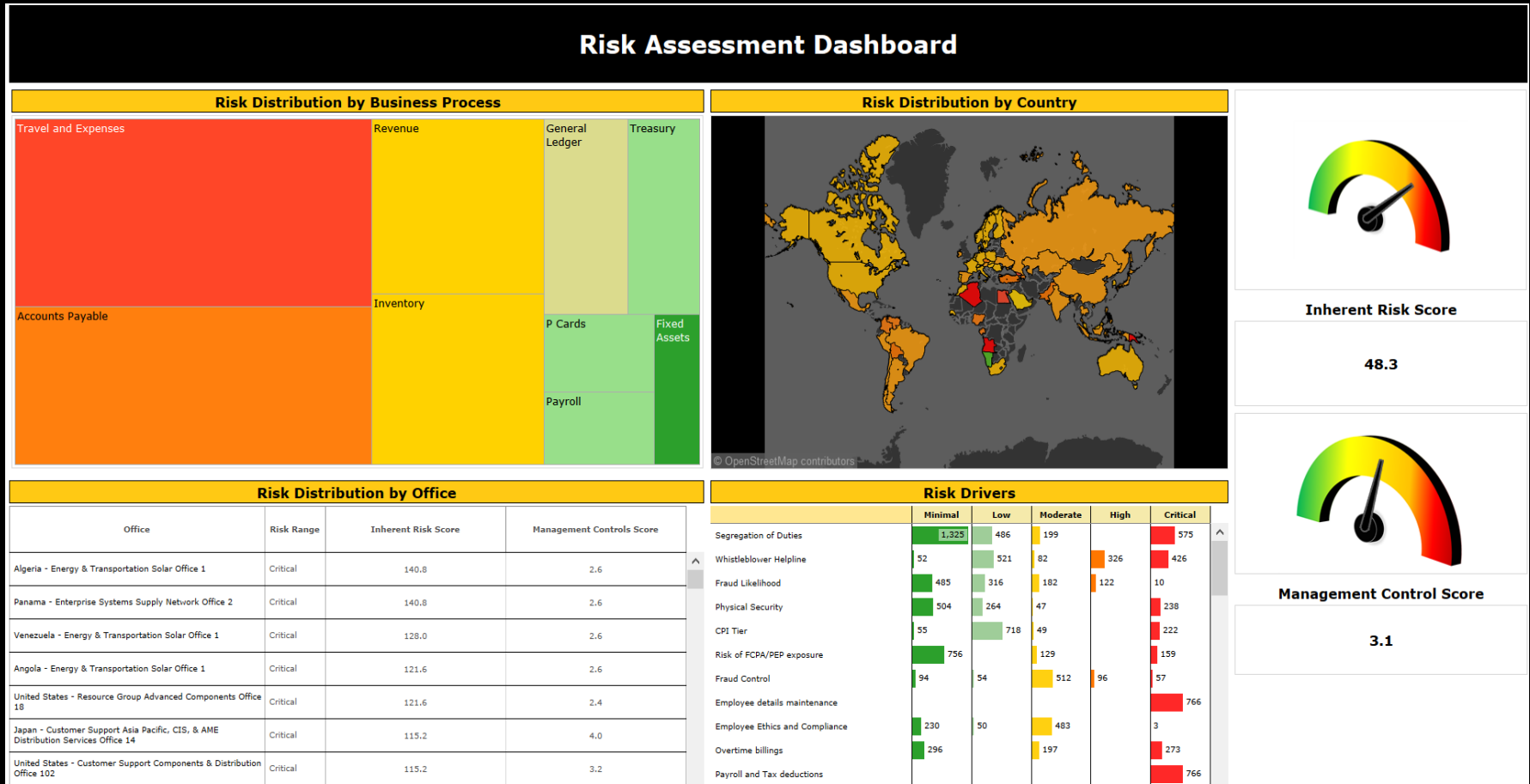
### Value

- Audit prioritization no longer assigned based on a fixed schedule or cycle
- Insights along a spectrum of risk genres (financial, operational etc.)

# Location and Process Risk Assessment

## Risk Score Aggregation and Site, Process Priority Identification

A summarized view of risk scores by locations and business processes derived from survey results rolled out to different stakeholders to assess the risk posture associated with business processes



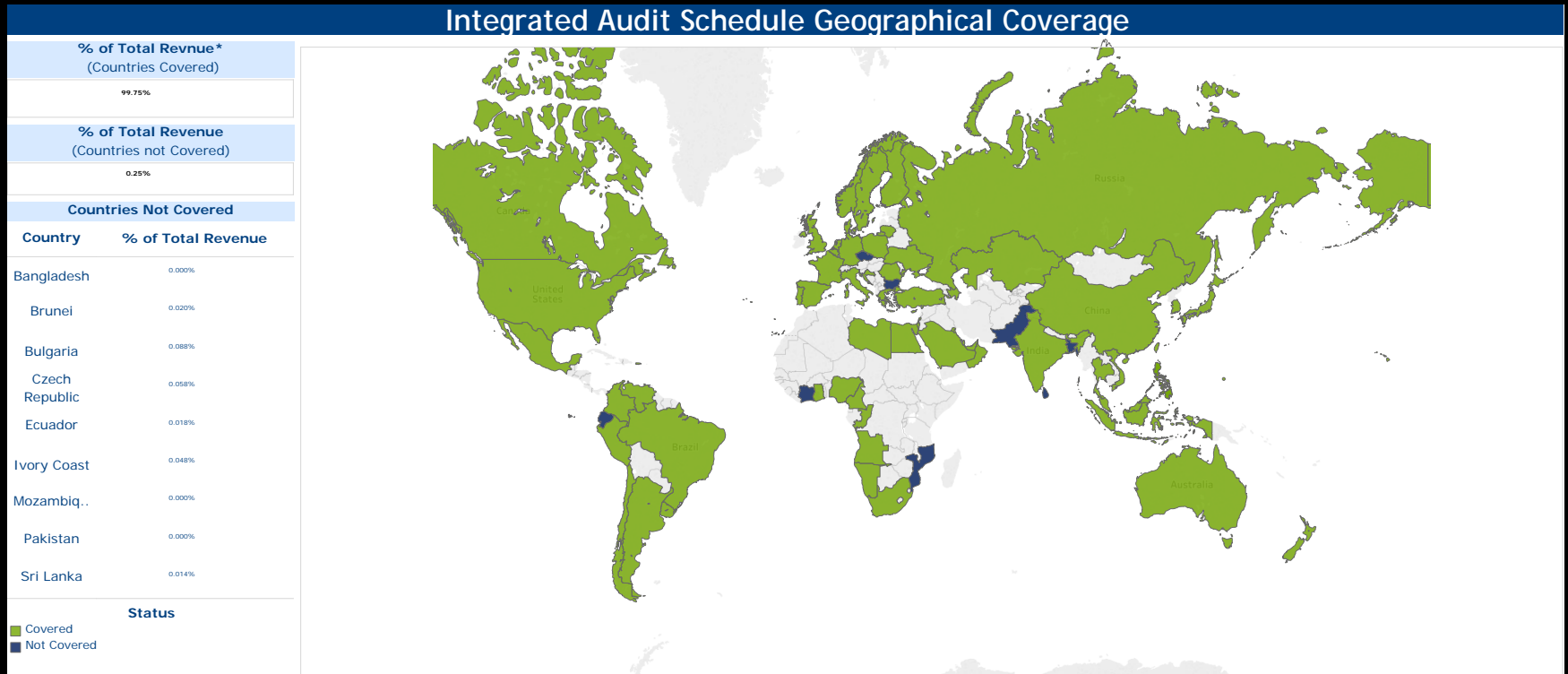
### Value

- Site visits are no longer assigned based on a fixed schedule or cycle
- Insights along a spectrum of risk genres (cyber security, financial, etc.)

# Audit Universe

## Visualization to represent the audit universe

In a global set-up, majority of the organizations have entities or set-ups across countries and cities. The complicated nature of local compliance needs followed by the need to provide assurance on internal controls across all locations and at the same time have a unified view of all audits across the organization is the driving theme for this visualization. It harnesses the data from different audit schedules across different time periods and presents a unified view of the audits completed across locations, processes and time.



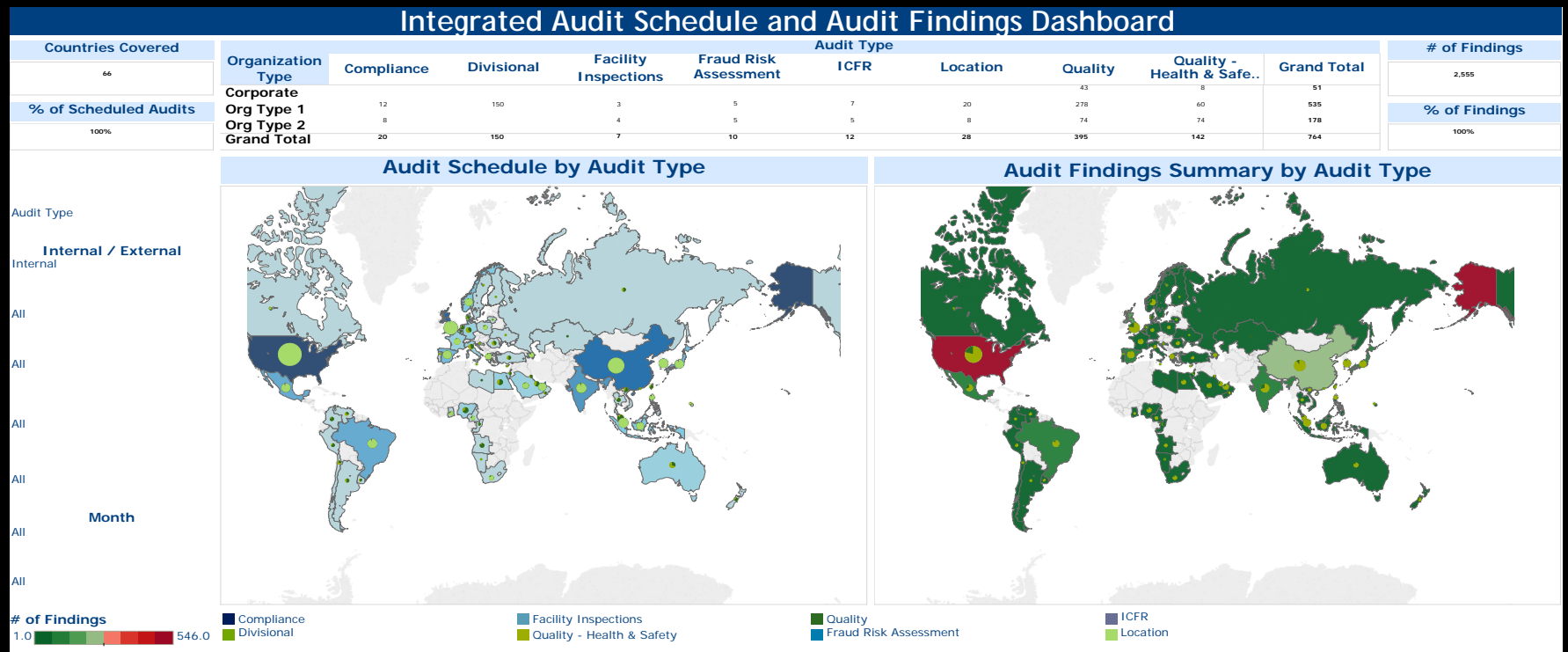
## Value

- Consolidated view of all planned audits across locations and processes
- Provides instant identification of location not audited over an extended period of time

# Audit Universe

Visualization to represent the audit universe

In a global set-up, majority of the organizations have entities or set-ups across countries and cities. The complicated nature of local compliance needs followed by the need to provide assurance on internal controls across all locations and at the same time have a unified view of all audits across the organization is the driving theme for this visualization. It harnesses the data from different audit schedules across different time periods and presents a unified view of the audits completed across locations, processes and time.

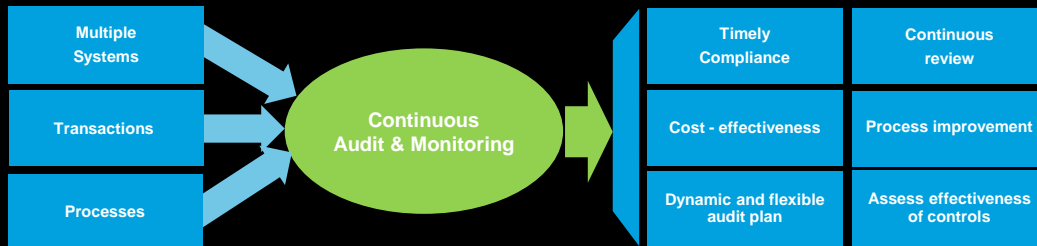


## Value

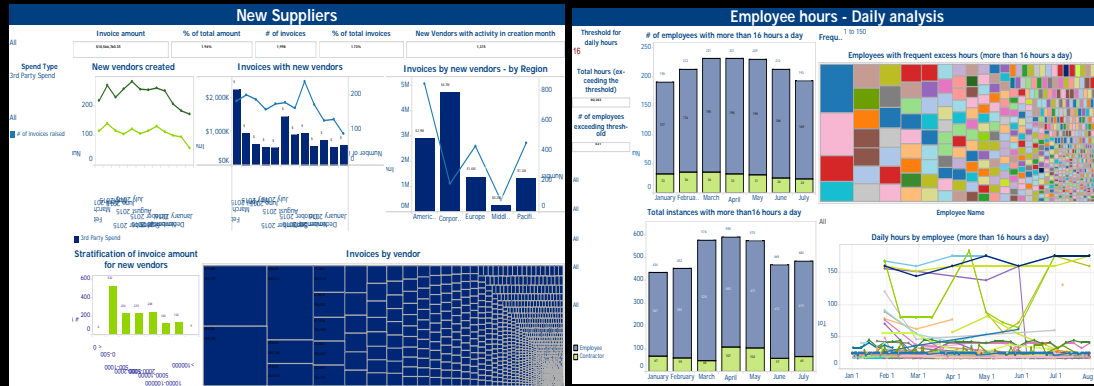
- Consolidated view of all planned audits across locations and processes
- Provides instant identification of location not audited over an extended period of time

# Continuous Auditing

Analytics for continuous auditing across processes







Continuous Auditing & Monitoring is a set of Processes used to support business performance management and improve financial governance in an effort to minimize loss and preserve/improve overall value. It is designed to collect data from processes, transactions and accounts to support audit activities and continually improve business processes and activities while adhering to compliance standards



## Value

- Increase the cost-effectiveness of controls and monitoring through automated solution
- Achieve timely, and inexpensive compliance to policies and regulations
- Shift from periodic review with limited focus to continuous review

-  Risk Assessment, Planning, & Fieldwork
-  Cross-Industry
-  Multiple
-  Multiple

# Continuous Auditing

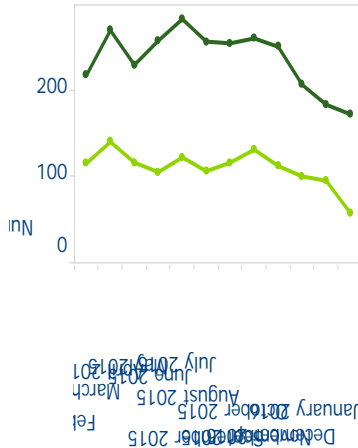
Analytics for continuous auditing across processes

## New Suppliers

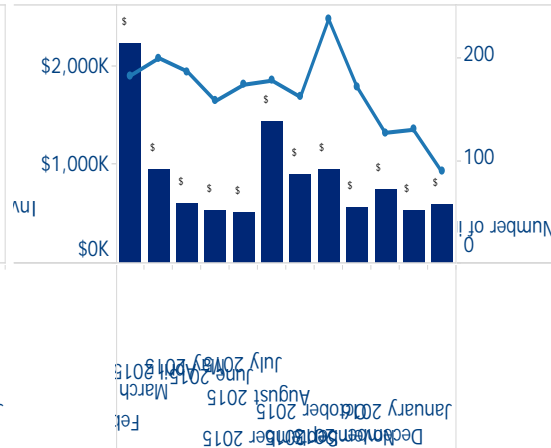
	Invoice amount	% of total amount	# of invoices	% of total invoices	New Vendors with activity in creation month
All	\$10,566,760.35	1.94%	1,998	1.73%	1,315

Spend Type  
3rd Party Spend

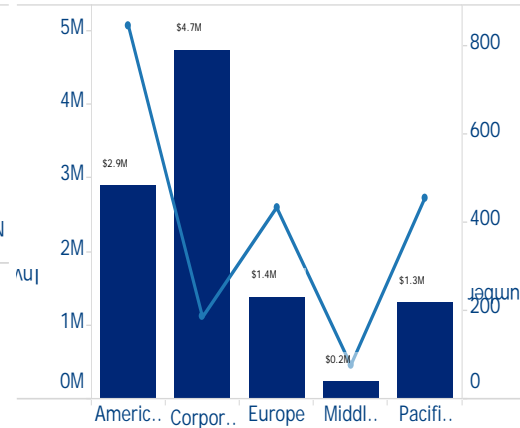
New vendors created



Invoices with new vendors



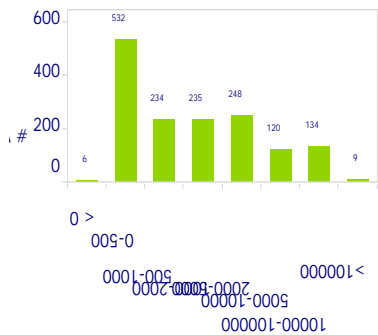
Invoices by new vendors - by Region



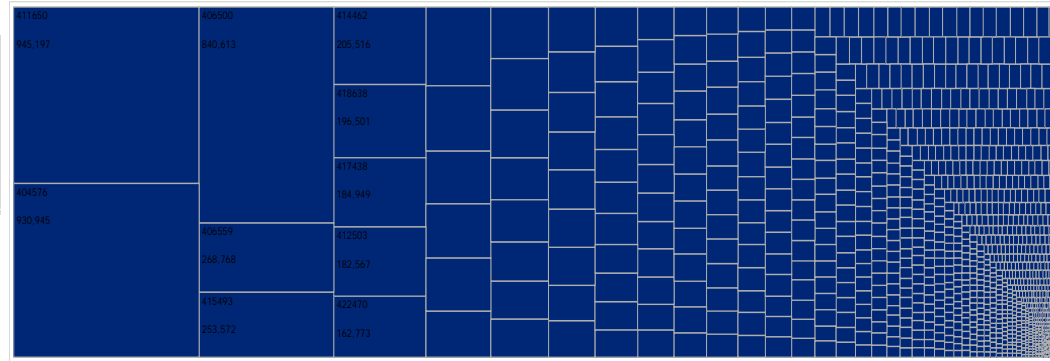
All  
# of invoices raised

3rd Party Spend

Stratification of invoice amount for new vendors



Invoices by vendor





# Continuous Auditing

Analytics for continuous auditing across processes

## Employee hours - Daily analysis

Threshold for daily hours

16

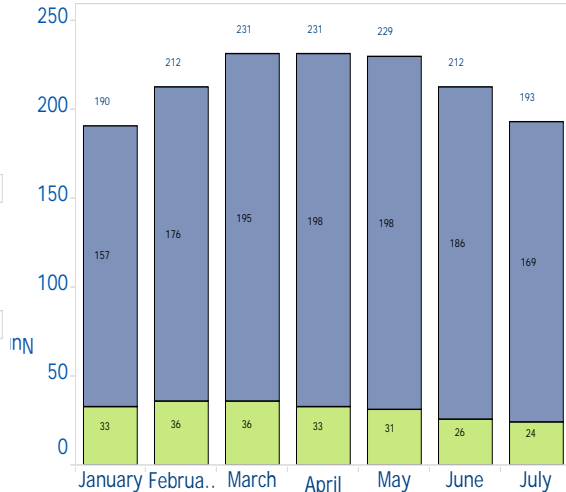
Total hours (exceeding the threshold)

80,383

# of employees exceeding threshold

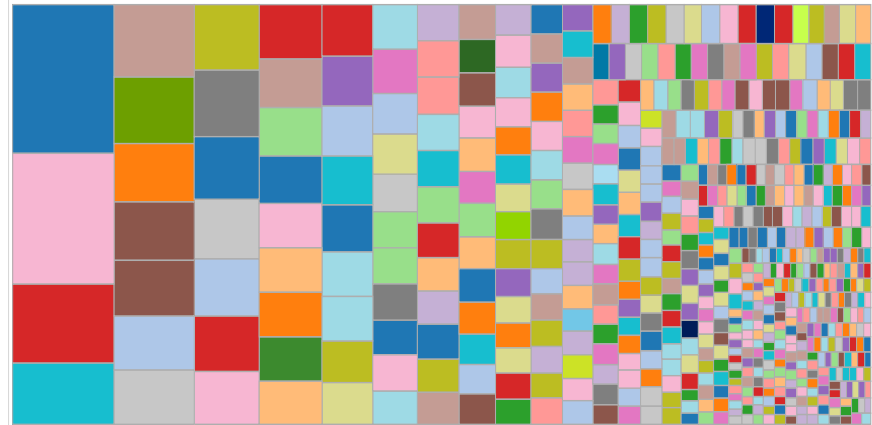
631

# of employees with more than 16 hours a day

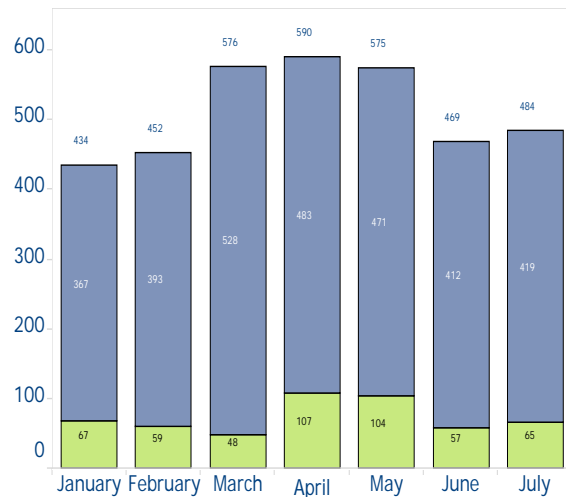


Frequ.. 1 to 150

Employees with frequent excess hours (more than 16 hours a day)

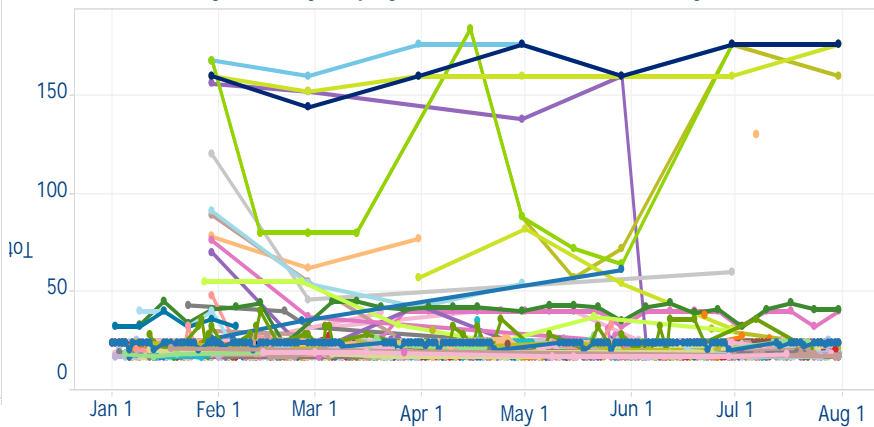


Total instances with more than 16 hours a day



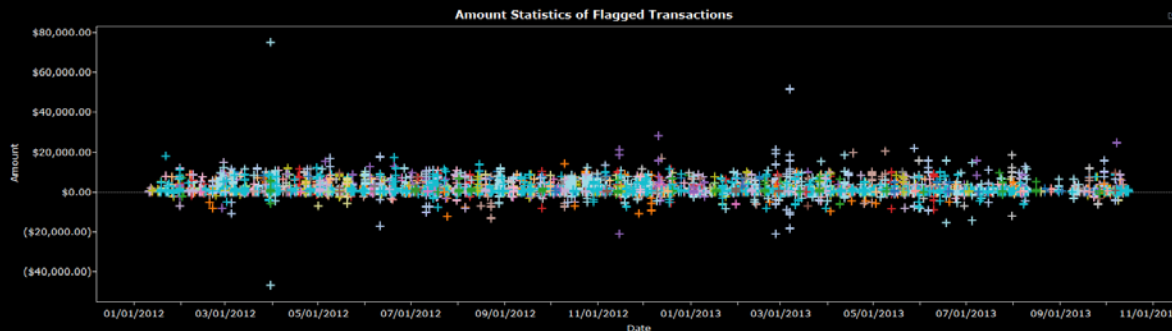
Employee Name

Daily hours by employee (more than 16 hours a day)



# Procure to Pay Review





Risk Aggregation and Analytics for Procure to Pay Audits



Procure to Pay is a huge area with risks associated at multiple levels. Right from the Vendor Setup until Payments, there are interlinked sub-processes that can progressively add to the risk. The analysis performed aggregates many risk factors to create vendor level aggregations of risk scores based on triggers and behaviors observed in transactional data. The analysis also focuses on areas of potential opportunities by highlighting cases of missed discounts or potential recoveries

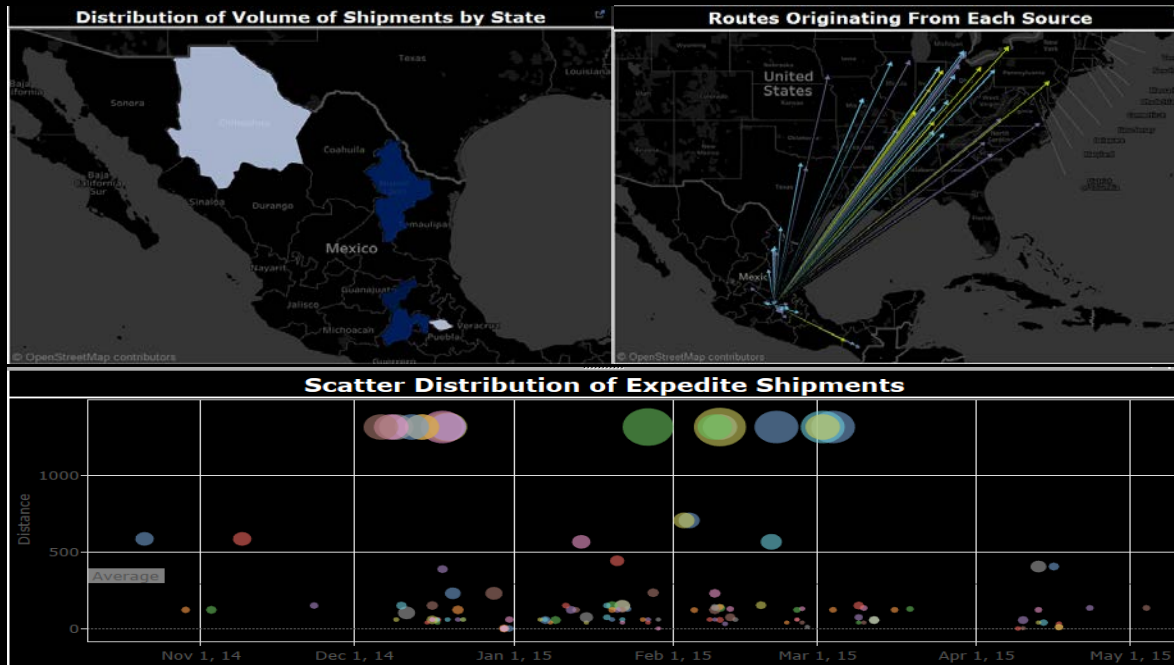
## Value

- Increased visibility of vendor spend and procurement process in it's entirety
- Quick identification of transactions that appear inaccurate/fraudulent
- Risk aggregation to identify riskiest vendors and associated drivers

-  Fieldwork
-  Cross-Industry
-  Financial & Operation
-  Accounts Payable

# Freight Analytics





## Analysis of Freight Spend and Risk Scoring



Clients in the C&IP and E&R industries have a large volume of spend on Freight Movement. To add complexity to the process, there is usually a large ecosystem of carriers that transport materials and goods over different routes and transportation modes. A deep analysis of the freight spend helps bring risks across different factors like route, modes, carriers, plant etc. to the fore. The analysis also highlights areas of improvement via consolidation of freight, preferred carriers, cheapest carriers over routes etc.

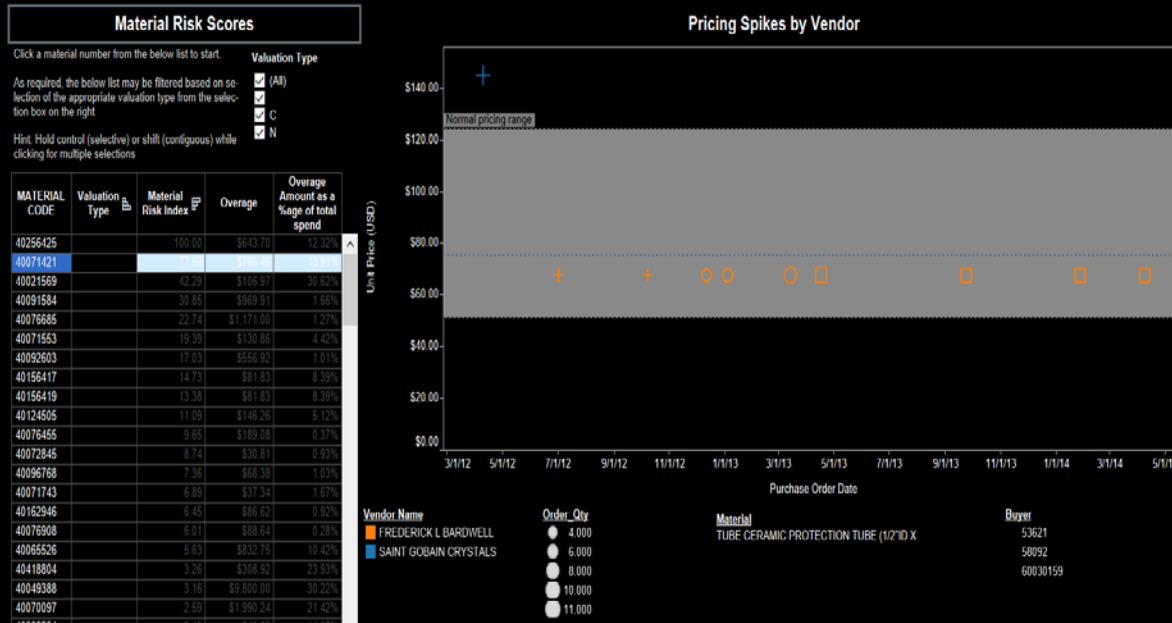
### Value

- Increased visibility of freight spend over the entire spectrum of modes and routes
- Quick identification of expensive carriers and routes with comparative view of relatively cheaper carriers
- Allows crisp data points for better negotiations with carriers and management of the overall freight movement

-  Risk Assessment & Fieldwork
-  Cross-Industry
-  Operations
-  Freight

# Pricing Analytics

## Analysis of Pricing within Procurement



Clients with major spend on purchase of materials generally rely on contractual terms for procurement of materials. However, there are risks associated with actual pricing that gets entered into the purchase orders. This analytic looks to analyze the variation in prices of materials over a period of time by vendors and buyers, and presents a risk ranked view to show instances of purchase with the maximum impact in terms of overages

### Value

- Increased visibility of prices at which materials have been procured
- Quick identification of outliers in terms of expensive purchases compared to purchase of same material at much lower price points
- Shows outliers by vendors and buyers to allow for identification of trends of expensive procurement

- Fieldwork
- Cross-Industry
- Operational and Financial
- Procurement



This presentation contains general information only and Deloitte is not, by means of this presentation, rendering accounting, business, financial, investment, legal, tax, or other professional advice or services. This presentation is not a substitute for such professional advice or services, nor should it be used as a basis for any decision or action that may affect your business. Before making any decision or taking any action that may affect your business, you should consult a qualified professional advisor.

Deloitte shall not be responsible for any loss sustained by any person who relies on this presentation.

#### **About Deloitte**

Deloitte refers to one or more of Deloitte Touche Tohmatsu Limited, a UK private company limited by guarantee (“DTTL”), its network of member firms, and their related entities. DTTL and each of its member firms are legally separate and independent entities. DTTL (also referred to as “Deloitte Global”) does not provide services to clients. Please see [www.deloitte.com/about](http://www.deloitte.com/about) for a detailed description of DTTL and its member firms. Please see [www.deloitte.com/us/about](http://www.deloitte.com/us/about) for a detailed description of the legal structure of Deloitte LLP and its subsidiaries. Certain services may not be available to attest clients under the rules and regulations of public accounting.

Copyright © 2016 Deloitte Development LLC. All rights reserved.  
Member of Deloitte Touche Tohmatsu Limited

#NACACS



ISACAHQ



ISACANews



ISACA (Official)



+isaca