

## Progesterone Benefits Include:

- ★ Relief from PMS Symptoms
- ★ Relief from Menstrual Cramps
- ★ Adrenal Gland Support
- ★ Restores the Sex Drive
- ★ Relief from the Normal Symptoms of Menopause
- ★ Weight Loss
- ★ Natural Antidepressant
- ★ Offers Relief from Migraine Headaches

### Ingredients:

**Active Ingredient:** Micronized Natural Progesterone USP, Vitamin C & E, Chaste Tree Berry, Squaw Vine, Cramp Bark, Red Raspberry Leaf, Blue Vervain, Mugwort Leaf, Dandelion Root & Leaf, Usnea Lichen, Prickly Ash Bark, Rose Hips, Syrup of Sweet Grapes, Seaweed Blend

**Other Ingredients:** Purified Water, Vegetable Oil Blend, Sepigel 305, Laureth-7, Aloe Vera, Sorbic Acid, Potassium Sorbate, Grain Alcohol, Vegetable Glycerin

All information compiled is strictly for educational purposes and Libido Edge Labs, LLC is not responsible for this information. The FDA has not evaluated these statements. Products are not intended to diagnose, treat, cure or prevent disease. Consult a health professional. No animal products or by-products are used in the manufacturing. No animal testing.

### Proposition 65

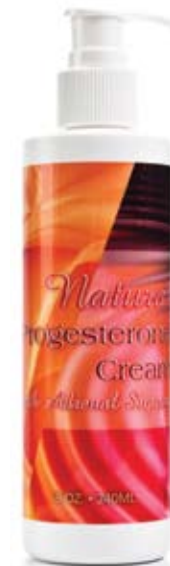
In the State of California and only in the State of California, Proposition 65, the "Safe Drinking Water and Toxic Act of 1986", was enacted as a ballot initiative in November 1986. The Proposition was intended by its authors to protect California citizens and the State's drinking water sources from chemicals known to cause cancer, birth defects or other reproductive harm, and to inform citizens about exposures to such chemicals. Proposition 65 requires the Governor of California to publish, at least annually, a list of chemicals determined by the state of California to cause cancer or reproductive toxicity. The California Office of Environmental Health Hazard Assessment or OEHHA, has the list published on their website at <http://www.oehha.ca.gov/prop65.html>.

Any product available in the State of California that contains an item from the list on Proposition 65 is required by the State of California to carry a warning. The OEHHA reviewed a series of animal studies that used progestins (synthetic progesterone) and natural progesterone (bio-identical progesterone). The greater percentage of the studies were with progestins and natural progesterone combined with synthetic estrogens. The administered doses of natural progesterone were up to 1000 times that found in natural progesterone creams and were either injected, oral or suppository. Just a few of the studies used natural progesterone exclusively and not one of the studies used a natural progesterone cream. Based on this review, the State of California made the decision to add natural progesterone (bio-identical) to Proposition 65. California is the only state that has made this decision and no other State supports Proposition 65. In the past, many decisions like this have been reversed and the item was removed from Proposition 65 in what California refers to as being "Delisted".

Though all the experts on natural progesterone creams soundly disagree with the decision by California, Libido Edge Labs, LLC is required to label natural progesterone products being shipped to California with "WARNING: This product contains a chemical known to the State of California to cause cancer".

Libido Edge Labs, LLC is in full compliance and will remain in compliance with these requirements until natural progesterone is delisted from Proposition 65.

# Natural Progesterone with Adrenal Support



8 oz Pump



P.O. Box 253  
Newark, OH 43058-0253

1-888-909-7299

Fax: 740-344-7550

[www.libidoedgelabs.com](http://www.libidoedgelabs.com)



## Progesterone Cream With Adrenal Support (8 oz Pump)

### **N**atural Progesterone Cream with Adrenal Support is an all-natural balance for all women.

An over abundance of estrogens, stress, environmental pollution, faulty eating habits and decreased nutrients in food are creating imbalances referred to as estrogen dominance. These imbalances create an array of symptoms, many associated with PMS, menopause, bone loss and adrenal exhaustion. Progesterone is produced by the ovaries and adrenal glands.

**Natural progesterone USP is bio-identical to the progesterone that the human body produces.** Dr. John R. Lee MD, a physician and author, writes that natural progesterone cream in applications of 20-30 mg gives relief to women expressing symptoms of estrogen dominance. He also recommends 8-10 mg for men to shrink and protect the prostate and improve urine flow.

**Our Progesterone Cream contains Adrenal Supporting ingredients to restore the adrenal glands and prevent adrenal exhaustion.**

**Cramp Bark** as its name suggests, this is a herb that helps to relieve muscle cramps. If you are one of the many people that suffer from leg cramps or cramps at night, then try this herb. Cramp bark is one of the best herbs for period pain. The womb is a powerful muscle and period 'cramps' can be effectively relieved with this herb.

**Blue Vervain** is considered an "emmenagogue," a substance that acts to promote and regulate menstrual flow when it has been obstructed or delayed. It is thought to be an excellent overall tonic that supports the entire body and exerts a gentle strengthening and nourishing effect. It is also believed to produce a general feeling of well-being, cleanse toxins from the body, and calms the nerves.

**Vitamins C and E** in the product stimulate collagen and elastine production. Vitamin C is an essential requirement to healthy and vital human skin, as we age the topical application of Vitamin C has been found to provide positive benefits in lessening the visible signs of aging. Vitamin E provides powerful antioxidant ability as well as helping to heal damaged cells and restore vitality to the skin.

**Chaste Tree Berry** reduces breast pain and symptoms of premenstrual syndrome (PMS), such as bloating, cramps, irritability, and mood swings. It may help relieve hot flashes and other symptoms associated with PMS and menopause.

**Fresh Squaw Vine** relieves painful menstrual periods. It is used as a diuretic and for urinary problems. It is also beneficial as a natural sedative and helps relieve insomnia.

**Red Raspberry Leaf** strengthens the uterus wall and regulates menstrual flow. Nourishes reproductive organs, especially the uterine muscles.

**Mugwort Leaf** is a remedy for painful and irregular menstruation and stops excessive or inappropriate menstrual bleeding.

**Dandelion Root** contains a bitter, milky juice that is thought to be capable of energizing the body. It also has properties that can detoxify the body and purify the blood. In India, dandelion root is used as a remedy for liver disorders. It is considered an excellent diuretic, largely because of its high potassium content. Dandelion root can also help neutralize acids in the blood. Dandelion root also aids digestion, and it is an excellent tonic for the

endocrine system. In addition, dandelion is used to lower cholesterol and uric acid levels in the body, and its rich iron content makes it useful for treating anemia.

**Prickly Ash Bark** relieves chronic abdominal pain.

**Rose Hips Extract** offers relief from osteoarthritis and also contains antioxidant properties. Rose Hips are a great source of Vitamin C and Bioflavonoids.

Adrenal glands play a critical role in producing hormones and regulating the nervous system. They are responsible for the secretion of cortisol -- which increases appetite and regulates energy levels. Adrenal glands also secrete Dehydroepiandrosterone, or DHEA. Progesterone Cream with Adrenal Support keeps adrenal glands functioning optimally thus improving bone density, keeping bad cholesterol levels under control, provides energy and improves mental sharpness and clarity.

**DIRECTIONS:** Apply 3 pumps of cream to thin-skinned area, back of knees, inner arms, upper chest or neck.

**PREMENOPAUSE:** Beginning the twelfth day after period starts, apply three pumps cream daily for 14 days. Stop. Repeat monthly.

**POSTMENOPAUSE:** Apply three pumps cream daily for 21 consecutive days in the month. Stop. Repeat monthly. Add more days and/or cream as needed.

**MEN:** Apply 1 pump (1/3 teaspoon) of cream daily.

One teaspoon (5 ml) of cream will supply 30mg of Micronized Natural Progesterone USP. (3 pumps = 30mg Progesterone Cream USP)