

AUSTRALIAN
MADE FOR OVER
35 YEARS



TUFF STOR™

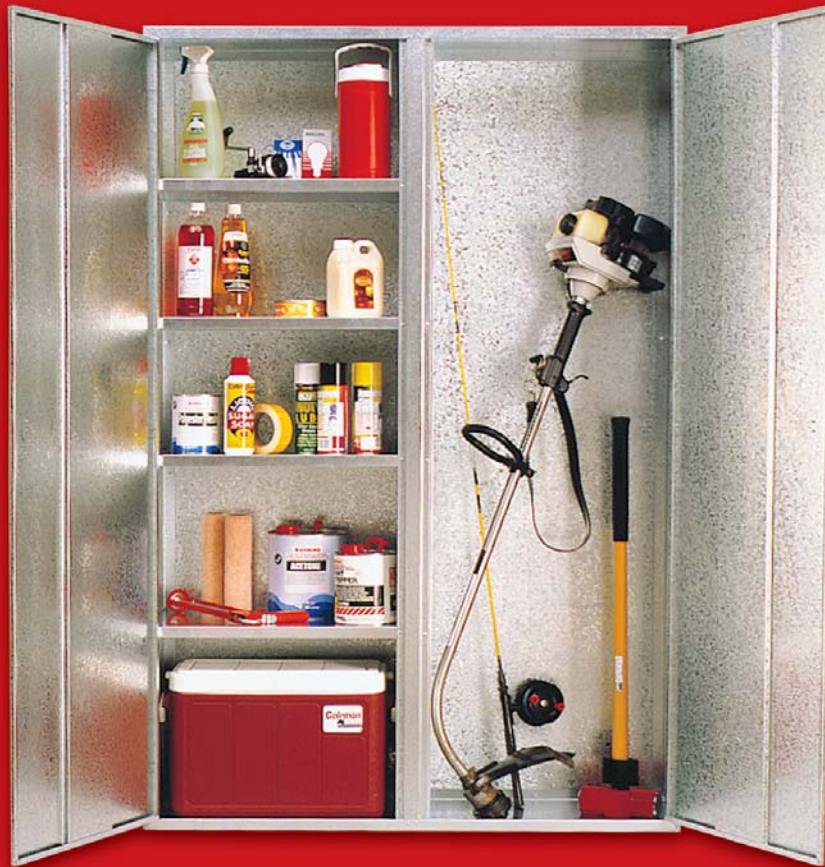
METAL STORAGE CABINETS

GALVANISED
RUST RESISTANT
RODENT PROOF
STRONG NON-WARPING
FREE STANDING
VERSATILE

Formerly known as Homestor Cabinets

TUFFSTOR™ METAL STORAGE CABINETS

STYLE 1 – SHELVES AND BROOM CABINET



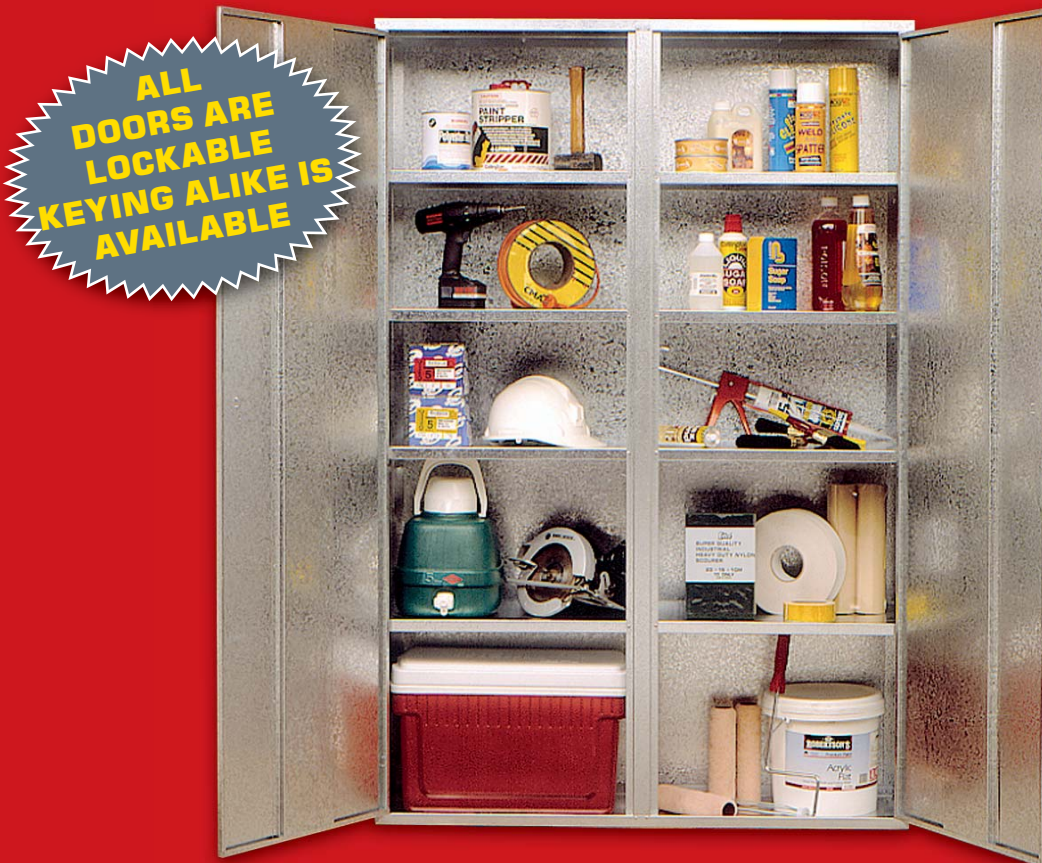
- Half shelves, half broom cabinet
- Workshops and storerooms
- Great for the garage or laundry
- For pool cleaning equipment
- Mops, brooms, garden tools
- Fit with a hanging rail for work aprons, clothes, etc.
(Hanging rail not included)

Heavy Duty Units come with Heavy Duty Doors, Top and Bottom

Code	Size	Height	Width	Depth	Cost
91001	Slimline	1755	855	330	
91005	Large	1755	1155	380	
91055	Extra Large	1755	1155	530	
91008	Heavy Duty Large	1755	1155	380	
91088	Heavy Duty Ex Large	1755	1155	530	

AUSTRALIAN
MADE FOR OVER
35 YEARS

STYLE 2 – FULL WIDTH SHELVES, TWO DOORS



- The most popular model
- Versatile general storage
- Archives
- Factories and Farms
- Garages and Garden sheds
- Schools and Workshops
- Office storage

- Supplied with locking handles
- Provides protection from dust, sawdust, rodents and snakes
- Outdoor storage
Note: seams and rivets must be sealed with a roof and gutter sealant; however, the cabinet will not be 100% waterproof unless a roof kit is installed

Heavy duty industrial grade units are available in large & extra large sizes.

Code	Size	Height	Width	Depth	Cost
92001	Slimline	1755	855	330	
92005	Large	1755	1155	380	
92008	Heavy Duty Large	1755	1155	380	

TUFFSTOR™ METAL STORAGE CABINETS

STYLE 2XL – EXTRA LARGE STORAGE CAPACITY



**EXTRA
DEPTH GIVES
BEST VALUE
FOR MONEY!**

**OVER
1 CUBIC
METRE OF
STORAGE
SPACE**

- Very popular extra large size
- Over 1m³ of storage space
- Versatile general storage
- Factories and Farms
- Garages and Garden sheds
- Schools and Workshops
- Office storage and archives
- Supplied with locking handles
- Provides protection from dust, sawdust, rodents and snakes
- Outdoor storage
Note: seams and rivets must be sealed with a roof and gutter sealant; however, the cabinet will not be 100% waterproof unless a roof kit is installed

Heavy duty industrial grade units are available in large & extra large sizes

Code	Size	Height	Width	Depth	Cost
92055	Extra Large	1755	1155	530	
92088	Heavy Duty Ex Large	1755	1155	530	

**AUSTRALIAN
MADE FOR OVER
35 YEARS**

STYLE 5K & 6K - KITFORM - ADJUSTABLE SHELVES

- Black or Beige powder coated
- Tough enough for the workshop, Attractive enough for the laundry!
- Easy to assemble-just 6 screws
- Quality 3-point locking system
- Strong adjustable shelves (4 in the 5K, 3 in the 6K)
- Sturdy one-piece back design
- Pre-hung doors makes for easy assembly

**AVAILABLE AS
KITFORM OR
ASSEMBLED**



Code	Size	Height	Width	Depth	Cost
7044 - kitform	Style 6K Off White	1680	760	380	
7006 - kitform	Style 5K Black	1850	850	390	
7013 - kitform	Style 5K Beige	1850	850	390	

Note: Colours are indicative only. Style 5K pictured. The Style 5K & 6K are not Australian made.

STYLE 3 - FULL WIDTH SHELVES - NO DOORS

- Excellent for storerooms and garden sheds
- Use where security is not important
- Enclosed at sides and back
- Quick access

**ALL GALVANISED UNITS
ARE FULLY ASSEMBLED
READY TO USE!**

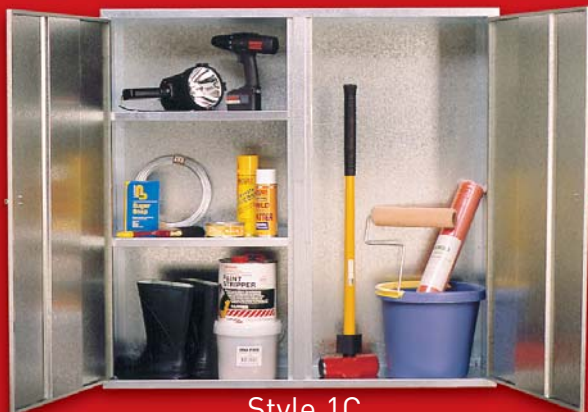
Units available as slimline, large and extra large.

Code	Size	H	W	D	Cost
93001	Slimline	1755	855	330	
93005	Large	1755	1155	380	
93055	Extra Large	1755	1155	530	

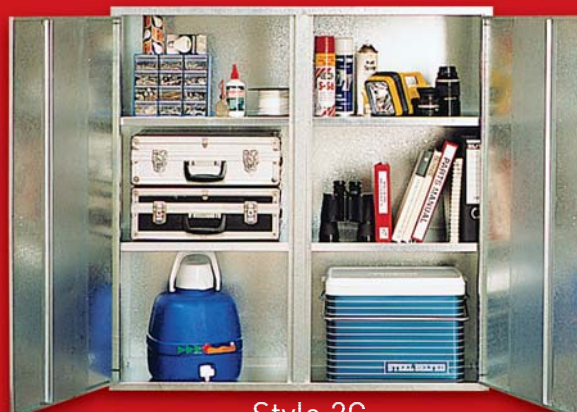


TUFFSTOR™ METAL STORAGE CABINETS

STYLE 1C & 2C - COUNTER HEIGHT CABINETS



Style 1C



Style 2C

- Shelves are half width in Style 1C, full width in Style 2C
- Install under a bench, below a window or use in a garden shed
- Counter height units can be wall mounted- in particular the half width type pictured below (fixings not supplied)

Code	Size	H	W	D	Cost
91211 -1SC	Slimline	1125	855	330	
91215 - 1C	Large	1125	1155	380	
91218 - 1XLC	Extra Large	1125	1155	530	
92211 - 2SC	Slimline	1125	855	330	
92215 - 2C	Large	1125	1155	380	
92218 - 2XLC	Extra Large	1125	1155	530	

STYLE 1CHW & 2CHW COUNTER HEIGHT HALF WIDTH CABINETS



Style 1CHW

- For those narrow spaces!
- Cramped areas
- Small garden sheds & storerooms
- Laundries
- Units, townhouses



Style 2CHW

Code	Size	H	W	D	Cost
91511 - 1SCHW	Slimline	1125	465	330	
91515 - 1CHW	Large	1125	615	380	
91518 - 1XLCHW	Extra Large	1125	615	530	
92511 - 2SCHW	Slimline	1125	465	330	
92515 - 2CHW	Large	1125	615	380	
92518 - 2XLCHW	Extra Large	1125	615	530	

AUSTRALIAN
MADE FOR OVER
35 YEARS

STYLE 1HW & 2HW - HALF WIDTH CABINETS



Style 1HW



Style 2HW

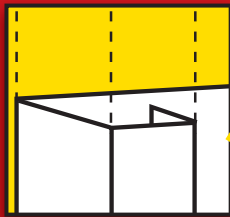
- Use on their own or beside a large cabinet
- Ideal for townhouse or unit
- Garages and store rooms
- Personal lockers
- Garden tools and equipment

**DOORS ARE
LOCKABLE**

Code	Size	Height	Width	Depth	Cost
91311 - 1SHW	Slimline	1755	465	330	
91315 - 1HW	Large	1755	615	380	
91318 - 1XLHW	Extra Large	1755	615	530	
92311 - 2SHW	Slimline	1755	465	330	
92315 - 2HW	Large	1755	615	380	
92318 - 2XLHW	Extra Large	1755	615	530	

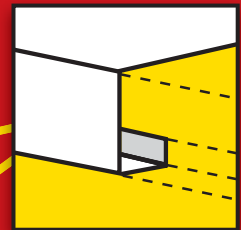
FEATURES OF THE TUFFSTOR™ GALVANISED CABINETS

Our cabinets are designed with your safety and convenience in mind. Some of the important features of these quality products are detailed below.

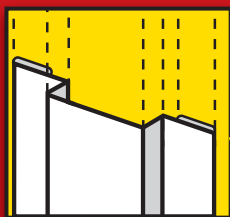


Sides of cabinet have triple folded safety edge.

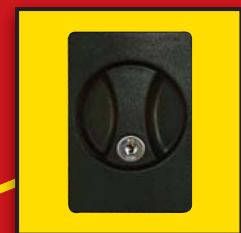
Galvanised steel used throughout unit – made to last! These cabinets will last for 30 years plus in non-corrosive situations.



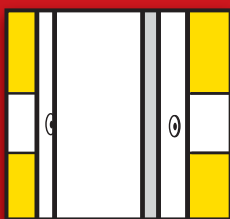
Triple folded edge for strength and safety on frame and shelves.



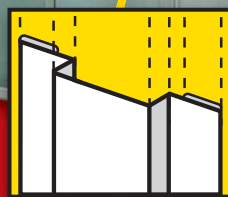
Full length top-hat section for a fully strengthened door.



Lockable doors. Keying alike also available.



Mullion riveted to shelves.



Safety edges on the mullion.



Triple folds on the long edge of doors for safety and strength.

Note: Some features listed above do not apply to the Style 5K or 6K cabinets.

TUFFSTOR™ METAL CABINETS

Australian Owned - Australian Made*

Ramdex Industries

Ph: 1300 726 339 • Fax: 1300 946 339

Email: sales@ramdex.com.au

Available from:

© Ramdex Industries. This publication is copyright and no part may be copied or reproduced without proper written permission. Version Feb 2011
*Style 5K & 6K are imported.

AUSTRALIAN
MADE FOR OVER
35 YEARS

Formerly known as Homestor Cabinets

TUFFSTOR™