



Spectrum AC WiFi Router
User Guide





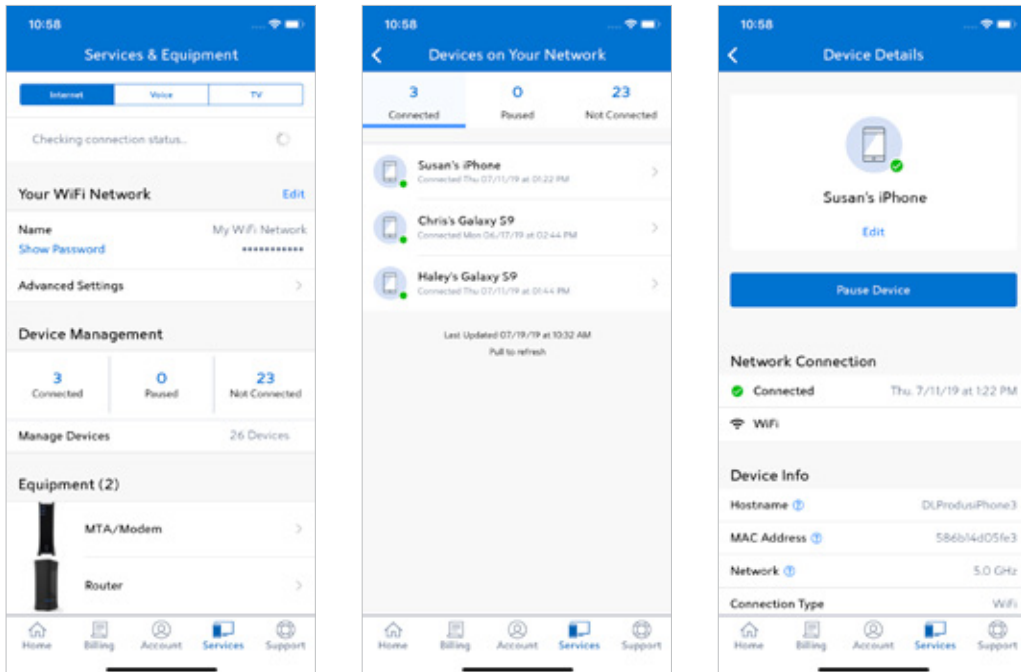
Spectrum WiFi Router with Advanced In-home WiFi

Advanced In-home WiFi on the Spectrum WiFi router delivers internet, network security and personalization, conveniently managed with the My Spectrum app. Your router will have QR code on the back label to indicate support of this service.

Advanced In-home WiFi Features

With Advanced In-home WiFi, you can:

- Personalize your WiFi network name and password.
- Pause or resume WiFi access for a device connected to your WiFi network.
- Get port forwarding support for improved gaming performance.
- Have peace of mind with a secure WiFi network.
- Use both wireless and Ethernet connectivity.



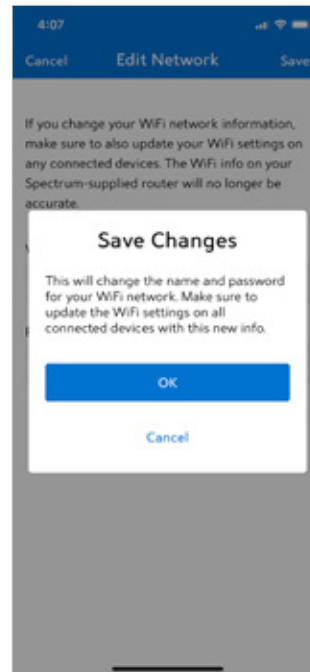
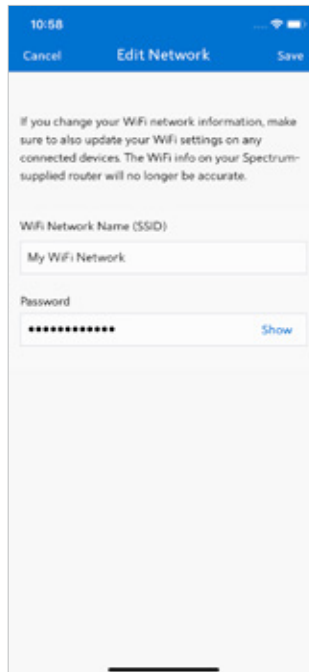
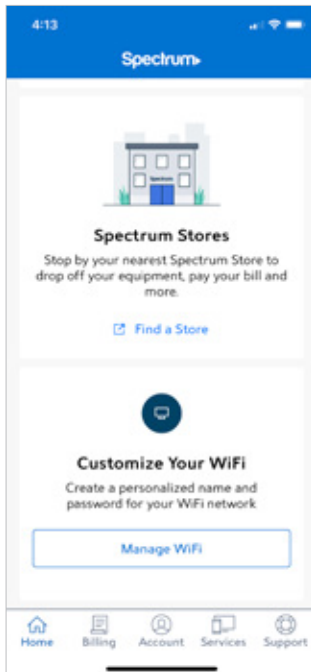
Get Started with My Spectrum App

To get started, download My Spectrum on Google Play or the App Store. Scan this QR code with your smartphone camera or go to spectrum.net/getapp:



Personalize Your WiFi Network Name and Password

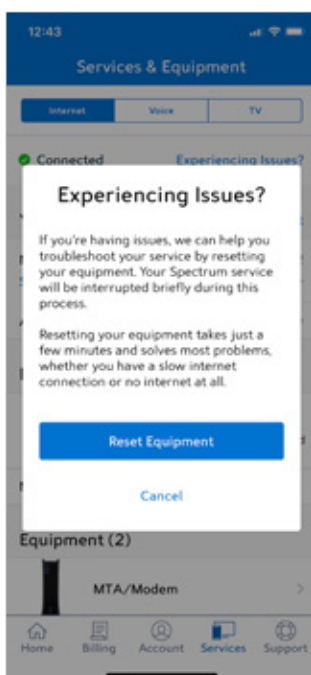
To secure your home network, we recommend creating a unique network name and an alphanumeric password. You can do this in the My Spectrum app or at [Spectrum.net](https://spectrum.net).



Troubleshooting Your Internet Service

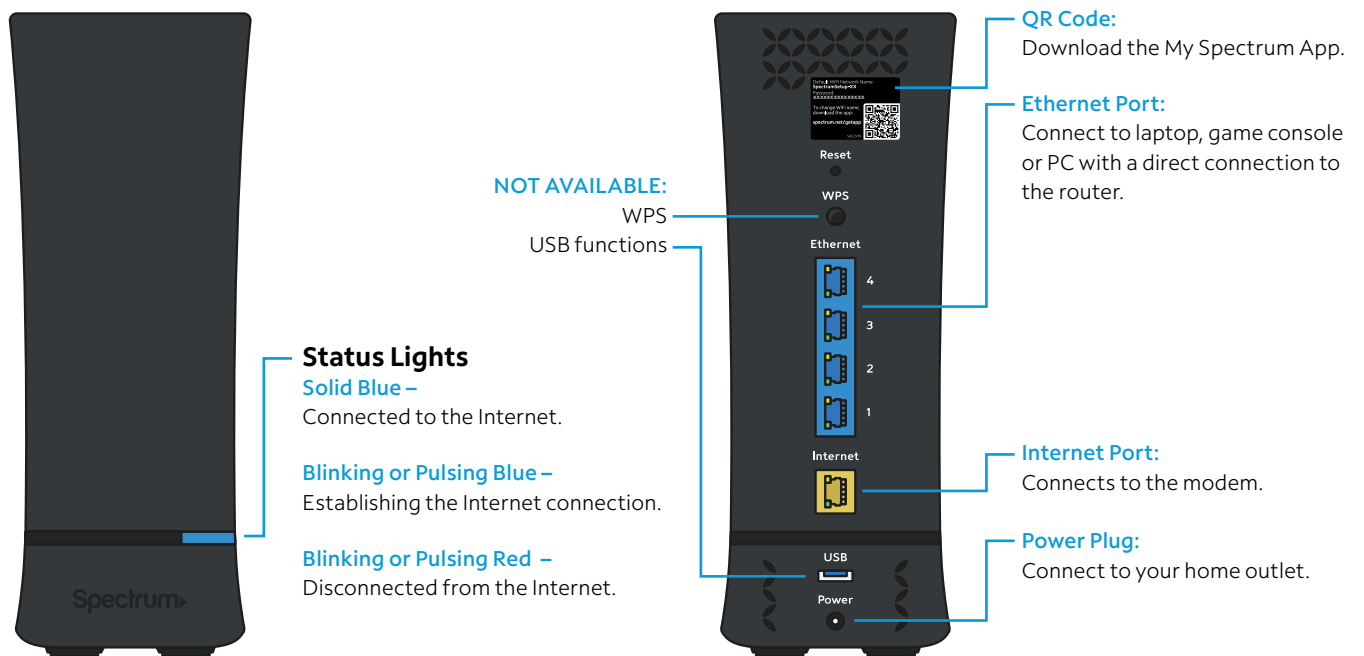
If you're experiencing slow speeds or if you lose connection to your WiFi network, check the following:

1. Distance from the WiFi router: The farther away you are, the weaker the signal will be.
Try moving closer.
2. Use the tools in the My Spectrum App to troubleshoot your connected devices and service.
3. Router location: Your router should be placed in a central location for best coverage.



Place your Router for the Best Coverage

- Personalize your WiFi network name and password.
- Do place in a central location.
- Do place on a raised surface.
- Do place in an open space.
- Don't place in a media center or closet.
- Don't place near devices like cordless phones that emit wireless radio signals.
- Don't place behind a TV.



Tech Specs

Features	Benefits
Concurrent 2.4 GHz and 5 GHz frequency bands	Supports existing client devices in the home, and all newer devices using higher frequencies. Provides flexibility in range for WiFi signal to cover the home.
3 to 4 Tx / Rx antenna for each frequency band with up to 4 logical data streams	Higher throughput and increased range provide improved experience. Delivers higher data rates for the 2.4 GHz and 5 GHz frequencies.
802.11ac wave 2 WiFi chipsets with higher processing power.	Supports consistent performance and higher density of WiFi devices connecting to the network.
Industry-standard security (WPA2 personal)	Supports the industry security standard to protect devices on the WiFi network.
Four GigE LAN ports	Connect stationary computers, game consoles, printers, media sources and other devices on the private network for high-speed service.
More specs	Radio support: 2.4 GHz 3x3 b/g/n 5 GHz 4x4 a/n/ac Ethernet standard: 10/100/1000 IPv4 and IPv6 support Power supply: 12VDC/2.5A Dimensions: 4" x 3.5" x 9"

Need Help or Have Questions?

We're here for you. To learn more about your services or get support, visit spectrum.net/support or call us at **(855) 632-7020**.