



Name \_\_\_\_\_ Class \_\_\_\_\_ Date \_\_\_\_\_

1 Match the term with the correct definition.

- heterotroph
- autotroph
- chlorophyll
- guard cells

- A. organism that makes its own food using the sun's energy
- B. organism that cannot make its own food
- C. cells that are part of a stoma

2 Match the term with the correct definition.

- mitochondrion
- cytoplasm
- chloroplast
- plant vein

- A. the location of photosynthesis
- B. the location of the second stage of cellular respiration
- C. the location of the first stage of cellular respiration

3 What are all the products of cellular respiration?



4 Match the term with the correct definition.

- alcoholic fermentation

- A. process that requires oxygen

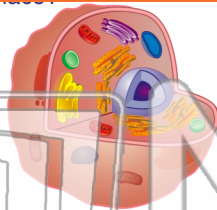


## PREVIEW

Please [Sign In](#) or [Sign Up](#) to download the printable version of this worksheet

7 Cellular respiration takes place in the \_\_\_\_\_.

- A mitochondria
- B ribosomes
- C nucleus
- D cytoplasm



8 Cellular respiration takes place in the \_\_\_\_\_.

- A mitochondria
- B ribosomes
- C nucleus
- D cytoplasm



9 Fermentation is an adaptation to an environment that \_\_\_\_\_.

- A has a large amount of oxygen
- B has a large amount of carbon dioxide
- C has a small amount or no oxygen
- D has a small amount or no carbon dioxide

10 Alcoholic fermentation is important to bread rising.

True or false?

- A True
- B False





# Photosynthesis and Respiration

Name \_\_\_\_\_ Class \_\_\_\_\_ Date \_\_\_\_\_

1 Match the term with the correct definition.

- heterotroph
  - autotroph
  - chlorophyll
  - guard cells
- A. organism that makes its own food using the sun's energy
  - B. organism that cannot make its own food
  - C. cells that are part of a stoma

2 Match the term with the correct definition.

- mitochondrion
  - cytoplasm
  - chloroplast
  - plant vein
- A. the location of photosynthesis
  - B. the location of the second stage of cellular respiration
  - C. the location of the first stage of cellular respiration

3 What are all the products of cellular respiration?



4 Match the term with the correct definition.

- alcoholic fermentation
- A. process that requires oxygen

5

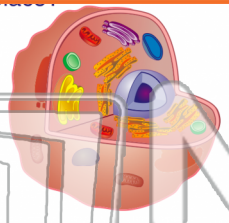


## PREVIEW

Please [Sign In](#) or [Sign Up](#) to download the printable version of this worksheet

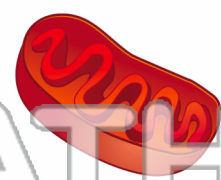
7

- A mitochondria
- B ribosomes
- C nucleus
- D cytoplasm



D

- A mitochondria
- B ribosomes
- C nucleus
- D cytoplasm



A

9

**Fermentation** is an adaptation to an environment that \_\_\_\_\_.

- A has a large amount of oxygen
- B has a large amount of carbon dioxide
- C has a small amount or no oxygen
- D has a small amount or no carbon dioxide

C

10

**Alcoholic fermentation** is important to bread rising.

True or false?

- A True
- B False



A