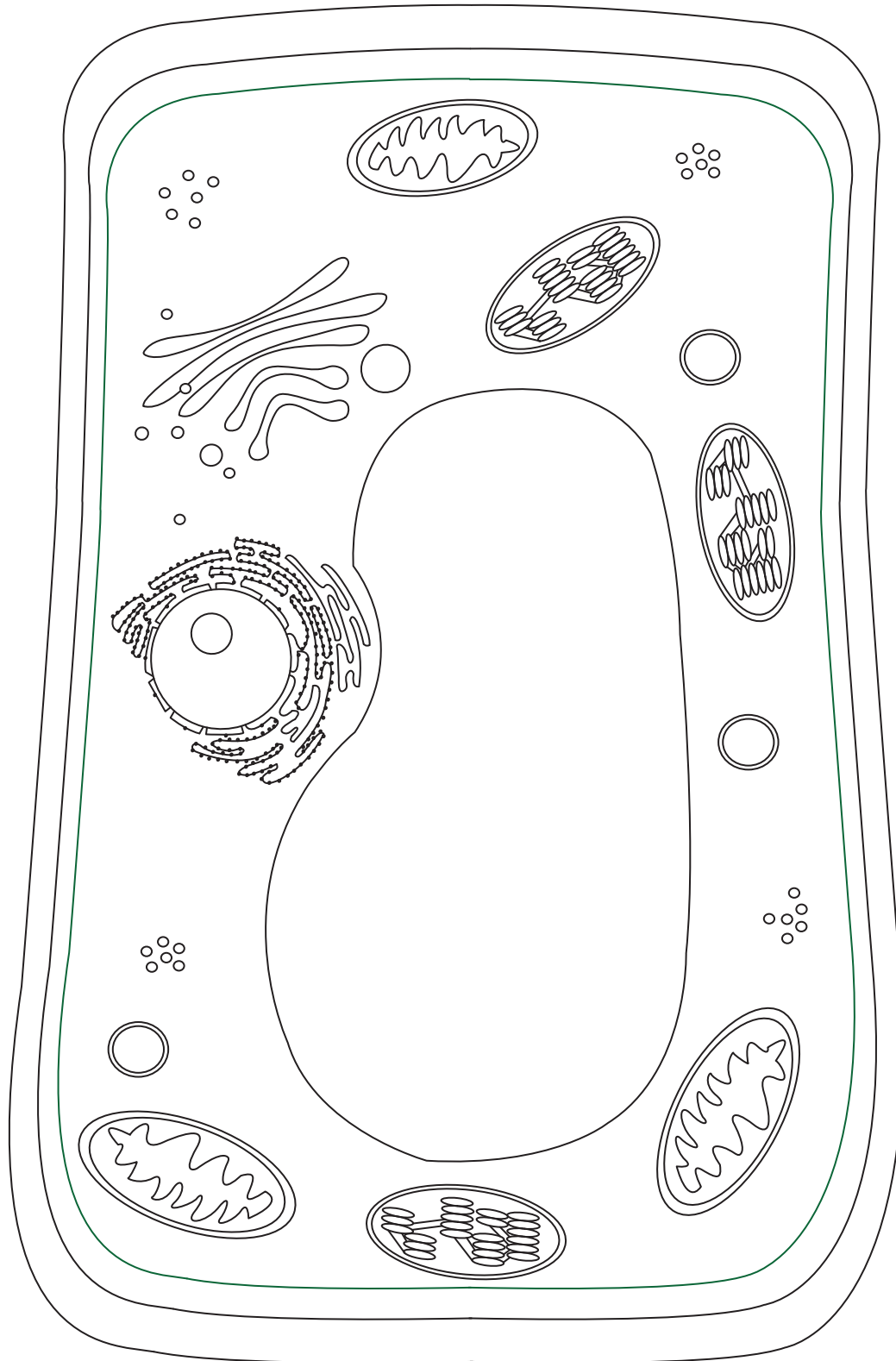


Name : _____

Plant Cell

Color each part of the plant cell using the color key.



mitochondria - red

nucleus - pink

vacuole - blue

Golgi apparatus - orange

chloroplast - light green

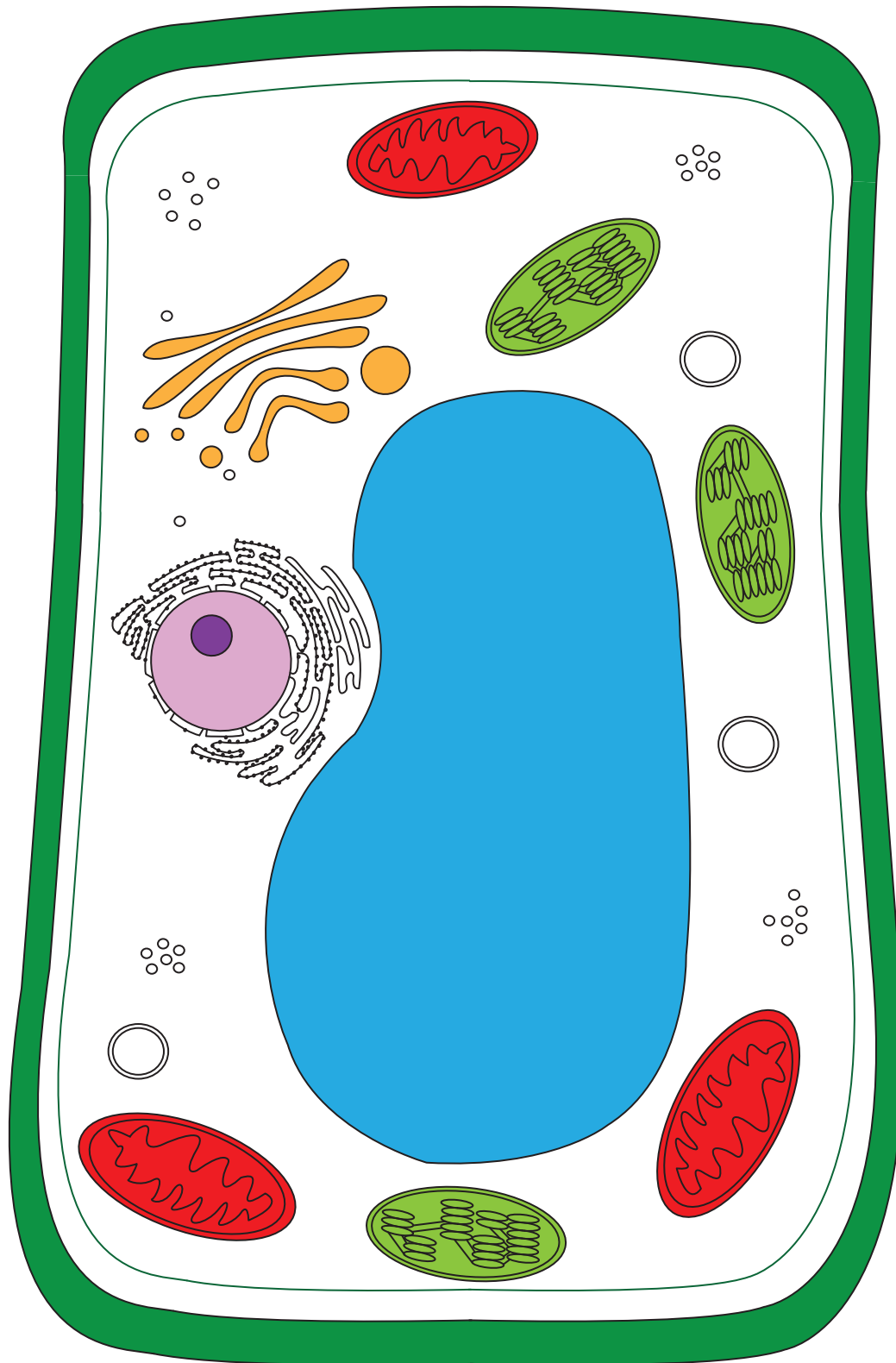
cell wall - dark green

nucleolus - purple

Name : _____

Answer key

Plant Cell



mitochondria - red

nucleus - pink

vacuole - blue

Golgi apparatus - orange

chloroplast - light green

cell wall - dark green

nucleolus - purple