

# Welcome to the Purdue OWL



*This page is brought to you by the OWL at Purdue (<http://owl.english.purdue.edu/>). When printing this page, you must include the entire legal notice at bottom.*

**Contributors:** Elizabeth Angeli, Jodi Wagner, Elena Lawrick, Kristen Moore, Michael Anderson, Lars Soderlund, Allen Brizee.

## **Summary:**

APA (American Psychological Association) is most commonly used to cite sources within the social sciences. This resource, revised according to the **6th edition** of the APA manual, offers examples for the general format of APA research papers, in-text citations, endnotes/footnotes, and the reference page. For more information, please consult the *Publication Manual of the American Psychological Association*, 6th edition, second printing.

## General Format

Please use the example at the bottom of this page to cite the Purdue OWL in APA.

### **General APA Guidelines**

Your essay should be typed, double-spaced on standard-sized paper (8.5" x 11") with 1" margins on all sides. You should use 10-12 pt. Times New Roman font or a similar font.

Include a **page header** at the top of every page. To create a **page header**, insert page numbers flush right. Then type "TITLE OF YOUR PAPER" in the header flush left.

### **Major Paper Sections**

Your essay should include **four** major sections: the **Title Page**, **Abstract**, **Main Body**, and **References**.

#### **Title Page**

The title page should contain the **title** of the paper, the **author's name**, and the **institutional affiliation**. Include the page header (described above) flush left with the page number flush right at the top of the page. Please note that on the title page, your page header should look like this:

Running head: TITLE OF YOUR PAPER

Pages after the title page should have a running head that looks like this:

TITLE OF YOUR PAPER

After consulting with publication specialists at the APA, OWL staff learned that the APA 6th edition sample papers have **incorrect** examples of Running heads on pages after the title page. This [link](#) will take to you the APA site where you can find a complete list of all the errors in the APA's 6th edition style guide.

Type your **title** in upper and lowercase letters centered in the upper half of the page. APA recommends that your title be no more than 12 words in length and that it should not contain abbreviations or words that serve no purpose. Your title may take up one or two lines. All text on the title page, and throughout your paper, should be double-spaced.

Beneath the title, type the **author's name**: first name, middle initial(s), and last name. Do not use titles (Dr.) or degrees (Ph.D.).

Beneath the author's name, type the **institutional affiliation**, which should indicate the location where the author(s) conducted the research.

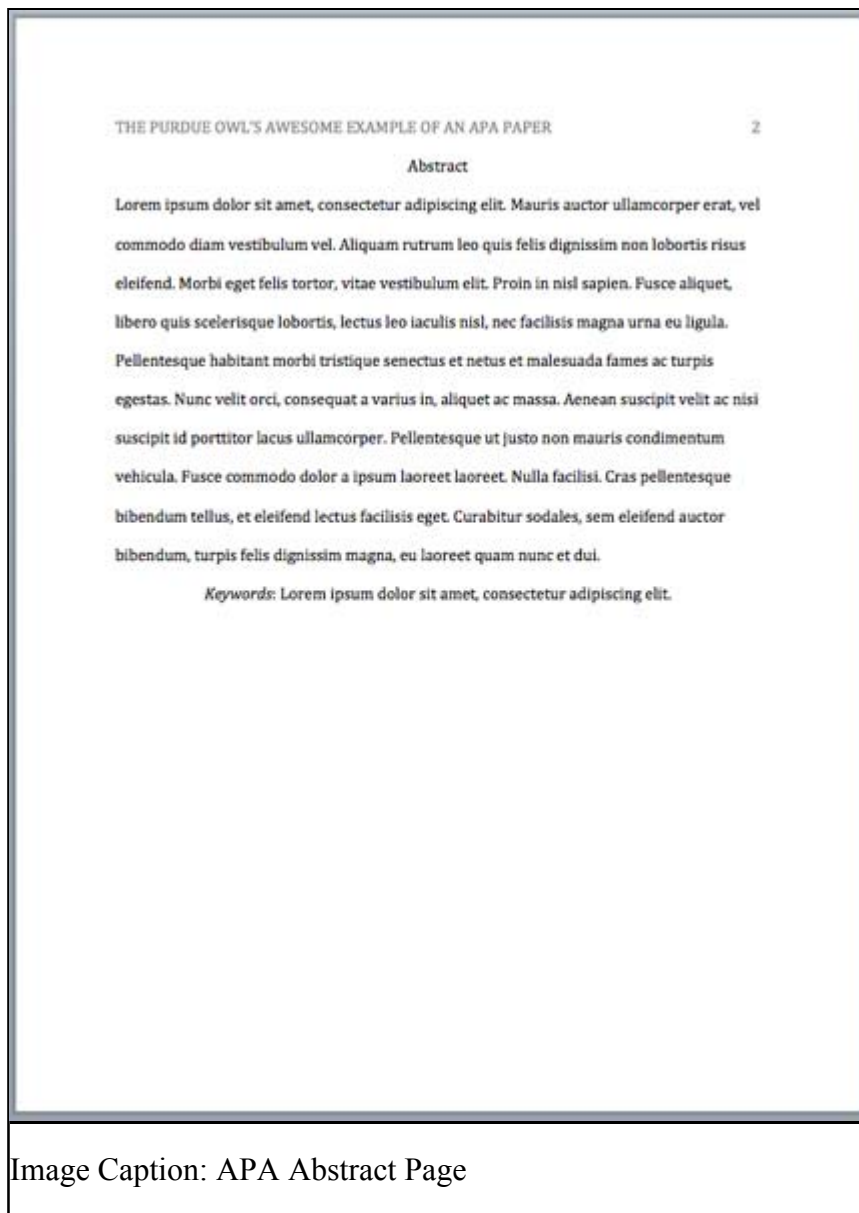


## Abstract

Begin a new page. Your abstract page should already include the **page header** (described above). On the first line of the abstract page, center the word “Abstract” (no bold, formatting, italics, underlining, or quotation marks).

Beginning with the next line, write a concise summary of the key points of your research. (Do not indent.) Your abstract should contain at least your research topic, research questions, participants, methods, results, data analysis, and conclusions. You may also include possible implications of your research and future work you see connected with your findings. Your abstract should be a single paragraph double-spaced. Your abstract should be between 150 and 250 words.

You may also want to list keywords from your paper in your abstract. To do this, center the text and type *Keywords:* (italicized) and then list your keywords. Listing your keywords will help researchers find your work in databases.



Please see our [Sample APA Paper](#) resource to see an example of an APA paper. You may also visit our [Additional Resources](#) page for more examples of APA papers.

## How to Cite the Purdue OWL in APA

### Individual Resources

Contributors' names and the last edited date can be found in the orange boxes at the top of every page on the OWL.

Contributors' names (Last edited date). *Title of resource*. Retrieved from <http://Web address for OWL resource>

Angeli, E., Wagner, J., Lawrick, E., Moore, K., Anderson, M., Soderland, L., & Brizee, A. (2010, May 5). *General format*. Retrieved from <http://owl.english.purdue.edu/owl/resource/560/01/>

**Contributors:** Elizabeth Angeli, Jodi Wagner, Elena Lawrick, Kristen Moore, Michael Anderson, Lars Soderlund, Allen Brizee.

**Summary:**

APA (American Psychological Association) is most commonly used to cite sources within the social sciences. This resource, revised according to the **6th edition** of the APA manual, offers examples for the general format of APA research papers, in-text citations, endnotes/footnotes, and the reference page. For more information, please consult the *Publication Manual of the American Psychological Association*, 6th edition, second printing.

## In-Text Citations: The Basics

Reference citations in text are covered on pages 169-179 of the Publication Manual. What follows are some general guidelines for referring to the works of others in your essay.

**Note:** APA style requires authors to use the past tense or present perfect tense when using signal phrases to describe earlier research. E.g., Jones (1998) **found** or Jones (1998) **has found**...

### APA Citation Basics

When using APA format, follow the author-date method of in-text citation. This means that the author's last name and the year of publication for the source should appear in the text, E.g., (Jones, 1998), and a complete reference should appear in the reference list at the end of the paper.

If you are referring to an idea from another work but **NOT** directly quoting the material, or making reference to an entire book, article or other work, you only have to make reference to the author and year of publication in your in-text reference.

### In-Text Citation Capitalization, Quotes, and Italics/Underlining

- Always capitalize proper nouns, including author names and initials: D. Jones.
- If you refer to the title of a source within your paper, capitalize all words that are four letters long or greater within the title of a source: *Permanence and Change*. Exceptions apply to short words that are verbs, nouns, pronouns, adjectives, and adverbs: *Writing New Media, There Is Nothing Left to Lose*.

(**Note:** in your References list, only the first word of a title will be capitalized: Writing new media.)

- When capitalizing titles, capitalize both words in a hyphenated compound word: *Natural-Born Cyborgs*.
- Capitalize the first word after a dash or colon: "Defining Film Rhetoric: The Case of Hitchcock's *Vertigo*."
- Italicize or underline the titles of longer works such as books, edited collections, movies, television series, documentaries, or albums: *The Closing of the American Mind*; *The Wizard of Oz*; *Friends*.
- Put quotation marks around the titles of shorter works such as journal articles, articles from edited collections, television series episodes, and song titles: "Multimedia Narration: Constructing Possible Worlds"; "The One Where Chandler Can't Cry."

### Short Quotations

If you are directly quoting from a work, you will need to include the author, year of publication, and the page number for the reference (preceded by "p."). Introduce the quotation with a signal phrase that includes the author's last name followed by the date of publication in parentheses.

According to Jones (1998), "Students often had difficulty using APA style, especially when it was their first time" (p. 199).

Jones (1998) found "students often had difficulty using APA style" (p. 199); what implications does this have for teachers?

If the author is not named in a signal phrase, place the author's last name, the year of publication, and the page number in parentheses after the quotation.

She stated, "Students often had difficulty using APA style" (Jones, 1998, p. 199), but she did not offer an explanation as to why.

### Long Quotations

Place direct quotations longer than 40 words in a free-standing block of typewritten lines, and omit quotation marks. Start the quotation on a new line, indented five spaces from the left margin. Type the entire quotation on the new margin, and indent the first line of any subsequent paragraph within the quotation five spaces from the new margin. Maintain double-spacing throughout. The parenthetical citation should come after the closing punctuation mark.

Jones's (1998) study found the following:

Students often had difficulty using APA style, especially when it was their first time citing sources. This difficulty could be attributed to the fact that many students failed to purchase a style manual or to ask their teacher for help. (p. 199)

## Summary or Paraphrase

If you are paraphrasing an idea from another work, you only have to make reference to the author and year of publication in your in-text reference, but APA guidelines encourage you to also provide the page number (although it is not required.)

According to Jones (1998), APA style is a difficult citation format for first-time learners.

APA style is a difficult citation format for first-time learners (Jones, 1998, p. 199).

**Contributors:** Elizabeth Angeli, Jodi Wagner, Elena Lawrick, Kristen Moore, Michael Anderson, Lars Soderlund, Allen Brizee.

### Summary:

APA (American Psychological Association) is most commonly used to cite sources within the social sciences. This resource, revised according to the **6th edition** of the APA manual, offers examples for the general format of APA research papers, in-text citations, endnotes/footnotes, and the reference page. For more information, please consult the *Publication Manual of the American Psychological Association*, 6th edition, second printing.

## In-Text Citations: Author/Authors

APA style has a series of important rules on using author names as part of the author-date system. There are additional rules for citing indirect sources, electronic sources, and sources without page numbers.

### Citing an Author or Authors

**A Work by Two Authors:** Name both authors in the signal phrase or in the parentheses each time you cite the work. Use the word "and" between the authors' names within the text and use the ampersand in the parentheses.

Research by Wegener and Petty (1994) supports...  
(Wegener & Petty, 1994)

**A Work by Three to Five Authors:** List all the authors in the signal phrase or in parentheses the first time you cite the source.

(Kernis, Cornell, Sun, Berry, & Harlow, 1993)

In subsequent citations, only use the first author's last name followed by "et al." in the signal phrase or in parentheses.

(Kernis et al., 1993)

In *et al.*, *et* should not be followed by a period.

**Six or More Authors:** Use the first author's name followed by et al. in the signal phrase or in parentheses.

Harris et al. (2001) argued...  
(Harris et al., 2001)

**Unknown Author:** If the work does not have an author, cite the source by its title in the signal phrase or use the first word or two in the parentheses. Titles of books and reports are italicized or underlined; titles of articles and chapters are in quotation marks.

A similar study was done of students learning to format research papers ("Using APA," 2001).

**Note:** In the rare case the "Anonymous" is used for the author, treat it as the author's name (Anonymous, 2001). In the reference list, use the name Anonymous as the author.

**Organization as an Author:** If the author is an organization or a government agency, mention the organization in the signal phrase or in the parenthetical citation the first time you cite the source.

According to the American Psychological Association (2000),...

If the organization has a well-known abbreviation, include the abbreviation in brackets the first time the source is cited and then use only the abbreviation in later citations.

First citation: (Mothers Against Drunk Driving [MADD], 2000)  
Second citation: (MADD, 2000)

**Two or More Works in the Same Parentheses:** When your parenthetical citation includes two or more works, order them the same way they appear in the reference list, separated by a semi-colon.

(Berndt, 2002; Harlow, 1983)

**Authors With the Same Last Name:** To prevent confusion, use first initials with the last names.

(E. Johnson, 2001; L. Johnson, 1998)

**Two or More Works by the Same Author in the Same Year:** If you have two sources by the same author in the same year, use lower-case letters (a, b, c) with the year to order the entries in the reference list. Use the lower-case letters with the year in the in-text citation.

Research by Berndt (1981a) illustrated that...

**Introductions, Prefaces, Forewords, and Afterwards:** When citing an Introduction, Preface, Foreword, or Afterward in-text, cite the appropriate author and year as usual.

(Funk & Kolln, 1992)

**Personal Communication:** For interviews, letters, e-mails, and other person-to-person communication, cite the communicators name, the fact that it was personal



communication, and the date of the communication. Do not include personal communication in the reference list.

(E. Robbins, personal communication, January 4, 2001).

A. P. Smith also claimed that many of her students had difficulties with APA style (personal communication, November 3, 2002).

## Citing Indirect Sources

If you use a source that was cited in another source, name the original source in your signal phrase. List the secondary source in your reference list and include the secondary source in the parentheses.

Johnson argued that...(as cited in Smith, 2003, p. 102).

**Note:**When citing material in parentheses, set off the citation with a comma, as above.

## Electronic Sources

If possible, cite an electronic document the same as any other document by using the author-date style.

Kenneth (2000) explained...

**Unknown Author and Unknown Date:** If no author or date is given, use the title in your signal phrase or the first word or two of the title in the parentheses and use the abbreviation "n.d." (for "no date").

Another study of students and research decisions discovered that students succeeded with tutoring ("Tutoring and APA," n.d.).

## Sources Without Page Numbers

When an electronic source lacks page numbers, you should try to include information that will help readers find the passage being cited. When an electronic document has numbered paragraphs, use the ¶ symbol, or the abbreviation "para." followed by the paragraph number (Hall, 2001, ¶ 5) or (Hall, 2001, para. 5). If the paragraphs are not numbered and the document includes headings, provide the appropriate heading and specify the paragraph under that heading. Note that in some electronic sources, like Web pages, people can use the Find function in their browser to locate any passages you cite.

According to Smith (1997), ... (Mind over Matter section, para. 6).

**Note:** Never use the page numbers of Web pages you print out; different computers print Web pages with different pagination.

**Contributors:**Elizabeth Angeli, Jodi Wagner, Elena Lawrick, Kristen Moore, Michael Anderson, Lars Soderlund, Allen Brizee.

**Summary:**

APA (American Psychological Association) is most commonly used to cite sources within the social sciences. This resource, revised according to the **6th edition** of the APA manual, offers examples for the general format of APA research papers, in-text citations, endnotes/footnotes, and the reference page. For more information, please consult the *Publication Manual of the American Psychological Association*, 6th edition, second printing.

## Footnotes and Endnotes

APA does not recommend the use of footnotes and endnotes because they are often expensive for publishers to reproduce. However, if explanatory notes still prove necessary to your document, APA details the use of two types of footnotes: content and copyright.

When using either type of footnote, insert a number formatted in superscript following almost any punctuation mark. Footnote numbers should not follow dashes ( — ), and if they appear in a sentence in parentheses, the footnote number should be inserted within the parentheses.

Scientists examined—over several years<sup>1</sup>—the fossilized remains of the woolly-wooly yak.<sup>2</sup> (These have now been transferred to the Chauan Museum.<sup>3</sup>)

When using the footnote function in a word-processing program like Microsoft Word, place all footnotes at the bottom of the page on which they appear. Footnotes may also appear on the final page of your document (usually this is after the References page). Center the word “Footnotes” at the top of the page. Indent five spaces on the first line of each footnote. Then, follow normal paragraph spacing rules. Double-space throughout.

<sup>1</sup> While the method of examination for the woolly-wooly yak provides important insights to this research, this document does not focus on this particular species.

### Content Notes

Content Notes provide supplemental information to your readers. When providing Content Notes, be brief and focus on only one subject. Try to limit your comments to one small paragraph.

Content Notes can also point readers to information that is available in more detail elsewhere.

<sup>1</sup> See Blackmur (1995), especially chapters three and four, for an insightful analysis of this extraordinary animal.

### Copyright Permission Notes

If you quote more than 500 words of published material or think you may be in violation of “Fair Use” copyright laws, you must get the formal permission of the author(s). All other sources simply appear in the reference list.

Follow the same formatting rules as with Content Notes for noting copyright permissions. Then attach a copy of the permission letter to the document.

If you are reproducing a graphic, chart, or table, from some other source, you must provide a special note at the bottom of the item that includes copyright information. You should also submit written permission along with your work. Begin the citation with “*Note.*”

*Note.* From “Title of the article,” by W. Jones and R. Smith, 2007, *Journal Title*, 21, p. 122. Copyright 2007 by Copyright Holder. Reprinted with permission.

**Contributors:** Elizabeth Angeli, Jodi Wagner, Elena Lawrick, Kristen Moore, Michael Anderson, Lars Soderlund, Allen Brizee.

**Summary:**

APA (American Psychological Association) is most commonly used to cite sources within the social sciences. This resource, revised according to the **6th edition** of the APA manual, offers examples for the general format of APA research papers, in-text citations, endnotes/footnotes, and the reference page. For more information, please consult the *Publication Manual of the American Psychological Association*, 6th edition, second printing.

## Reference List: Basic Rules

Your reference list should appear at the end of your paper. It provides the information necessary for a reader to locate and retrieve any source you cite in the body of the paper. Each source you cite in the paper must appear in your reference list; likewise, each entry in the reference list must be cited in your text.

Your references should begin on a new page separate from the text of the essay; label this page "References" centered at the top of the page (do NOT bold, underline, or use quotation marks for the title). All text should be double-spaced just like the rest of your essay.

### Basic Rules

- All lines after the first line of each entry in your reference list should be indented one-half inch from the left margin. This is called hanging indentation.
- Authors' names are inverted (last name first); give the last name and initials for all authors of a particular work for up to and including seven authors. If the work has more than seven authors, list the first six authors and then use ellipses after the sixth author's name. After the ellipses, list the last author's name of the work.
- Reference list entries should be alphabetized by the last name of the first author of each work.
- If you have more than one article by the same author, single-author references or multiple-author references with the exact same authors in the exact same order are listed in order by the year of publication, starting with the earliest.
- When referring to any work that is NOT a journal, such as a book, article, or Web page, capitalize only the first letter of the first word of a title and subtitle,

the first word after a colon or a dash in the title, and proper nouns. Do not capitalize the first letter of the second word in a hyphenated compound word.

- Capitalize all major words in journal titles.
- Italicize titles of longer works such as books and journals.
- Do not italicize, underline, or put quotes around the titles of shorter works such as journal articles or essays in edited collections.

**Contributors:** Elizabeth Angeli, Jodi Wagner, Elena Lawrick, Kristen Moore, Michael Anderson, Lars Soderlund, Allen Brizee.

**Summary:**

APA (American Psychological Association) is most commonly used to cite sources within the social sciences. This resource, revised according to the **6th edition** of the APA manual, offers examples for the general format of APA research papers, in-text citations, endnotes/footnotes, and the reference page. For more information, please consult the *Publication Manual of the American Psychological Association*, 6th edition, second printing.

## Reference List: Author/Authors

The following rules for handling works by a single author or multiple authors apply to all APA-style references in your reference list, regardless of the type of work (book, article, electronic resource, etc.)

### Single Author

Last name first, followed by author initials.

Berndt, T. J. (2002). Friendship quality and social development. *Current Directions in Psychological Science*, *11*, 7-10.

### Two Authors

List by their last names and initials. Use the ampersand instead of "and."

Wegener, D. T., & Petty, R. E. (1994). Mood management across affective states: The hedonic contingency hypothesis. *Journal of Personality & Social Psychology*, *66*, 1034-1048.

### Three to Seven Authors

List by last names and initials; commas separate author names, while the last author name is preceded again by ampersand.

Kernis, M. H., Cornell, D. P., Sun, C. R., Berry, A., Harlow, T., & Bach, J. S. (1993). There's more to self-esteem than whether it is high or low: The importance of stability of self-esteem. *Journal of Personality and Social Psychology*, *65*, 1190-1204.

### More Than Seven Authors

Miller, F. H., Choi, M. J., Angeli, L. L., Harland, A. A., Stamos, J. A., Thomas, S. T., . . . Rubin, L. H. (2009). Web site usability for the blind and low-vision user. *Technical Communication* 57, 323-335.

### Organization as Author

American Psychological Association. (2003).

### Unknown Author

*Merriam-Webster's collegiate dictionary* (10th ed.).(1993). Springfield, MA: Merriam-Webster.

**NOTE:** When your essay includes parenthetical citations of sources with no author named, use a shortened version of the source's title instead of an author's name. Use quotation marks and italics as appropriate. For example, parenthetical citations of the source above would appear as follows: (*Merriam-Webster's*, 1993).

### Two or More Works by the Same Author

Use the author's name for all entries and list the entries by the year (earliest comes first).

Berndt, T. J. (1981).

Berndt, T. J. (1999).

When an author appears both as a sole author and, in another citation, as the first author of a group, list the one-author entries first.

Berndt, T. J. (1999). Friends' influence on students' adjustment to school. *Educational Psychologist*, 34, 15-28.

Berndt, T. J., & Keefe, K. (1995). Friends' influence on adolescents' adjustment to school. *Child Development*, 66, 1312-1329.

References that have the same first author and different second and/or third authors are arranged alphabetically by the last name of the second author, or the last name of the third if the first and second authors are the same.

Wegener, D. T., Kerr, N. L., Fleming, M. A., & Petty, R. E. (2000). Flexible corrections of juror judgments: Implications for jury instructions. *Psychology, Public Policy, & Law*, 6, 629-654.

Wegener, D. T., Petty, R. E., & Klein, D. J. (1994). Effects of mood on high elaboration attitude change: The mediating role of likelihood judgments. *European Journal of Social Psychology*, 24, 25-43.

## Two or More Works by the Same Author in the Same Year

If you are using more than one reference by the same author (or the same group of authors listed in the same order) published in the same year, organize them in the reference list alphabetically by the title of the article or chapter. Then assign letter suffixes to the year. Refer to these sources in your essay as they appear in your reference list, e.g.: "Berndt (1981a) makes similar claims..."

Berndt, T. J. (1981a). Age changes and changes over time in prosocial intentions and behavior between friends. *Developmental Psychology*, *17*, 408-416.

Berndt, T. J. (1981b). Effects of friendship on prosocial intentions and behavior. *Child Development*, *52*, 636-643.

## Introductions, Prefaces, Forewords, and Afterwords

Cite the publishing information about a book as usual, but cite Introduction, Preface, Foreword, or Afterword (whatever title is applicable) as the chapter of the book.

Funk, R. & Kolln, M. (1998). Introduction. In E.W. Ludlow (Ed.), *Understanding English Grammar* (pp. 1-2). Needham, MA: Allyn and Bacon.

**Contributors:** Elizabeth Angeli, Jodi Wagner, Elena Lawrick, Kristen Moore, Michael Anderson, Lars Soderlund, Allen Brizee.

### Summary:

APA (American Psychological Association) is most commonly used to cite sources within the social sciences. This resource, revised according to the **6th edition** of the APA manual, offers examples for the general format of APA research papers, in-text citations, endnotes/footnotes, and the reference page. For more information, please consult the *Publication Manual of the American Psychological Association*, 6th edition, second printing.

# Reference List: Articles in Periodicals

## Basic Form

APA style dictates that authors are named last name followed by initials; publication year goes between parentheses, followed by a period. The title of the article is in sentence-case, meaning only the first word and proper nouns in the title are capitalized. The periodical title is run in title case, and is followed by the volume number which, with the title, is also italicized or underlined.

Author, A. A., Author, B. B., & Author, C. C. (Year). Title of article. *Title of Periodical*, *volume number*(issue number), pages.

### **Article in Journal Paginated by Volume**

Journals that are paginated by volume begin with page one in issue one, and continue numbering issue two where issue one ended, etc.

Harlow, H. F. (1983). Fundamentals for preparing psychology journal articles. *Journal of Comparative and Physiological Psychology*, 55, 893-896.

### **Article in Journal Paginated by Issue**

Journals paginated by issue begin with page one every issue; therefore, the issue number gets indicated in parentheses after the volume. The parentheses and issue number are not italicized or underlined.

Scruton, R. (1996). The eclipse of listening. *The New Criterion*, 15(30), 5-13.

### **Article in a Magazine**

Henry, W. A., III. (1990, April 9). Making the grade in today's schools. *Time*, 135, 28-31.

### **Article in a Newspaper**

Unlike other periodicals, p. or pp. precedes page numbers for a newspaper reference in APA style. Single pages take p., e.g., p. B2; multiple pages take pp., e.g., pp. B2, B4 or pp. C1, C3-C4.

Schultz, S. (2005, December 28). Calls made to strengthen state energy policies. *The Country Today*, pp. 1A, 2A.

**Note:** Because of issues with html coding, the listings below using brackets contain spaces that are not to be used with your listings. Use a space as normal before the brackets, but do not include a space following the bracket.

### **Letter to the Editor**

Moller, G. (2002, August). Ripples versus rumbles [Letter to the editor]. *Scientific American*, 287(2), 12.

### **Review**

Baumeister, R. F. (1993). Exposing the self-knowledge myth [Review of the book *The self-knower: A hero under control*, by R. A. Wicklund & M. Eckert]. *Contemporary Psychology*, 38, 466-467.

**Contributors:** Elizabeth Angeli, Jodi Wagner, Elena Lawrick, Kristen Moore, Michael Anderson, Lars Soderlund, Allen Brizee.

**Summary:**

APA (American Psychological Association) is most commonly used to cite sources within the social sciences. This resource, revised according to the **6th edition** of the APA manual, offers examples for the general format of APA research papers, in-text citations, endnotes/footnotes, and the reference page. For more information, please consult the *Publication Manual of the American Psychological Association*, 6th edition, second printing.

## Reference List: Books

### Basic Format for Books

Author, A. A. (Year of publication). *Title of work: Capital letter also for subtitle*. Location: Publisher.

**Note:** For "Location," you should always list the city and the state using the two letter postal abbreviation without periods (New York, NY).

Calfee, R. C., & Valencia, R. R. (1991). *APA guide to preparing manuscripts for journal publication*. Washington, DC: American Psychological Association.

### Edited Book, No Author

Duncan, G. J., & Brooks-Gunn, J. (Eds.). (1997). *Consequences of growing up poor*. New York, NY: Russell Sage Foundation.

### Edited Book with an Author or Authors

Plath, S. (2000). *The unabridged journals*. K.V. Kukil, (Ed.). New York, NY: Anchor.

### A Translation

Laplace, P. S. (1951). *A philosophical essay on probabilities*. (F. W. Truscott & F. L. Emory, Trans.). New York, NY: Dover. (Original work published 1814).

**Note:** When you cite a republished work, like the one above, in your text, it should appear with both dates: Laplace (1814/1951).

### Edition Other Than the First

Helfer, M. E., Keme, R. S., & Drugman, R. D. (1997). *The battered child* (5th ed.). Chicago, IL: University of Chicago Press.

### Article or Chapter in an Edited Book

Author, A. A., & Author, B. B. (Year of publication). Title of chapter. In A. Editor & B. Editor (Eds.), *Title of book* (pages of chapter). Location: Publisher.



**Note:** When you list the pages of the chapter or essay in parentheses after the book title, use "pp." before the numbers: (pp. 1-21). This abbreviation, however, does not appear before the page numbers in periodical references, except for newspapers.

O'Neil, J. M., & Egan, J. (1992). Men's and women's gender role journeys: Metaphor for healing, transition, and transformation. In B. R. Wainrib (Ed.), *Gender issues across the life cycle* (pp. 107-123). New York, NY: Springer.

### **Multivolume Work**

Wiener, P. (Ed.). (1973). *Dictionary of the history of ideas* (Vols. 1-4). New York, NY: Scribner's.

**Contributors:** Elizabeth Angeli, Jodi Wagner, Elena Lawrick, Kristen Moore, Michael Anderson, Lars Soderlund, Allen Brizee.

### **Summary:**

APA (American Psychological Association) is most commonly used to cite sources within the social sciences. This resource, revised according to the **6th edition** of the APA manual, offers examples for the general format of APA research papers, in-text citations, endnotes/footnotes, and the reference page. For more information, please consult the *Publication Manual of the American Psychological Association*, 6th edition, second printing.

## **Reference List: Other Print Sources**

### **An Entry in An Encyclopedia**

Bergmann, P. G. (1993). Relativity. In *The new encyclopedia britannica* (Vol. 26, pp. 501-508). Chicago: Encyclopedia Britannica.

### **Work Discussed in a Secondary Source**

List the source the work was discussed in:

Coltheart, M., Curtis, B., Atkins, P., & Haller, M. (1993). Models of reading aloud: Dual-route and parallel-distributed-processing approaches. *Psychological Review*, *100*, 589-608.

**NOTE:** Give the secondary source in the references list; in the text, name the original work, and give a citation for the secondary source. For example, if Seidenberg and McClelland's work is cited in Coltheart et al. and you did not read the original work, list the Coltheart et al. reference in the References. In the text, use the following citation:

In Seidenberg and McClelland's study (as cited in Coltheart, Curtis, Atkins, & Haller, 1993), ...

### Dissertation Abstract

Yoshida, Y. (2001). Essays in urban transportation (Doctoral dissertation, Boston College, 2001). *Dissertation Abstracts International*, 62, 7741A.

### Government Document

National Institute of Mental Health. (1990). *Clinical training in serious mental illness* (DHHS Publication No. ADM 90-1679). Washington, DC: U.S. Government Printing Office.

For information about citing legal sources in your reference list, see the [Westfield State College page on Citing Legal Materials in APA Style](#).

### Report From a Private Organization

American Psychiatric Association. (2000). *Practice guidelines for the treatment of patients with eating disorders* (2nd ed.). Washington, DC: Author.

### Conference Proceedings

Schnase, J. L., & Cunniss, E. L. (Eds.). (1995). Proceedings from CSCL '95: *The First International Conference on Computer Support for Collaborative Learning*. Mahwah, NJ: Erlbaum.

**Contributors:** Elizabeth Angeli, Jodi Wagner, Elena Lawrick, Kristen Moore, Michael Anderson, Lars Soderlund, Allen Brizee.

#### Summary:

APA (American Psychological Association) is most commonly used to cite sources within the social sciences. This resource, revised according to the **6th edition** of the APA manual, offers examples for the general format of APA research papers, in-text citations, endnotes/footnotes, and the reference page. For more information, please consult the *Publication Manual of the American Psychological Association*, 6th edition, second printing.

## Reference List: Electronic Sources (Web Publications)

**Please note:** There are no spaces used with brackets in APA. When possible, include the year, month, and date in references. If the month and date are not available, use the year of publication. Please note, too, that the OWL still includes information about print sources for those still working with print sources.

### Article From an Online Periodical

Online articles follow the same guidelines for printed articles. Include all information the online host makes available, including an issue number in parentheses.

Author, A. A., & Author, B. B. (Date of publication). Title of article. *Title of Online Periodical*, volume number(issue number if available). Retrieved from <http://www.someaddress.com/full/url/>

Bernstein, M. (2002). 10 tips on writing the living Web. *A List Apart: For People Who Make Websites*, 149. Retrieved from <http://www.alistapart.com/articles/writeliving>

### Online Scholarly Journal Article

Because online materials can potentially change URLs, APA recommends providing a Digital Object Identifier (DOI), when it is available, as opposed to the URL. DOIs are an attempt to provide stable, long-lasting links for online articles. They are unique to their documents and consist of a long alphanumeric code. Many-but not all-publishers will provide an article's DOI on the first page of the document.

Note that some online bibliographies provide an article's DOI but may "hide" the code under a button which may read "Article" or may be an abbreviation of a vendors name like "CrossRef" or "PubMed." This button will usually lead the user to the full article which will include the DOI. Find DOI's from print publications or ones that go to dead links with CrossRef.org's "DOI Resolver," which is displayed in a central location on their home page.

### Article From an Online Periodical with DOI Assigned

Author, A. A., & Author, B. B. (Date of publication). Title of article. *Title of Journal*, volume number. doi:0000000/000000000000

Brownlie, D. (2007). Toward effective poster presentations: An annotated bibliography. *European Journal of Marketing*, 41(11/12), 1245-1283. doi:10.1108/03090560710821161

### Article From an Online Periodical with no DOI Assigned

Online scholarly journal articles without a DOI require the URL of the journal home page.

Author, A. A., & Author, B. B. (Date of publication). Title of article. *Title of Journal*, volume number. Retrieved from <http://www.journalhomepage.com/full/url/>

Kenneth, I. A. (2000). A Buddhist response to the nature of human rights. *Journal of Buddhist Ethics*, 8. Retrieved from <http://www.cac.psu.edu/jbe/twocont.html>

If the article appears as a printed version as well, the URL is not required. Use "Electronic version" in brackets after the article's title.

Whitmeyer, J. M. (2000). Power through appointment [Electronic version]. *Social Science Research*, 29, 535-555.

### Article From a Database

When referencing a print article obtained from an online database (such as a database in the library), provide appropriate print citation information (formatted just like a "normal" print citation would be for that type of work). This will allow people to retrieve the print version if they do not have access to the database from which you retrieved the article. You can also include the item number or accession number in parentheses at the end, but the APA manual says that this is not required. For articles that are easily located, do not provide database information. If the article is difficult to locate, then you can provide database information. Only use retrieval dates if the source could change, such as Wikis. For more about citing articles retrieved from electronic databases, see pages 187-192 of the Publication Manual.

Smyth, A. M., Parker, A. L., & Pease, D. L. (2002). A study of enjoyment of peas. *Journal of Abnormal Eating*, 8(3), 120-125.

### Abstract

If you only cite an abstract but the full text of the article is also available, cite the online abstract as other online citations, adding "[Abstract]" after the article or source name.

Paterson, P. (2008). How well do young offenders with Asperger Syndrome cope in custody?: Two prison case studies [Abstract]. *British Journal of Learning Disabilities*, 36(1), 54-58.

Bossong, G. Ergativity in Basque. *Linguistics*, 22(3), 341-392.

### Newspaper Article

Author, A. A. (Year, Month Day). Title of article. *Title of Newspaper*. Retrieved from <http://www.someaddress.com/full/url/>

Parker-Pope, T. (2008, May 6). Psychiatry handbook linked to drug industry. *The New York Times*. Retrieved from <http://www.nytimes.com>

### Electronic Books

Electronic books may include books found on personal websites, databases, or even in audio form. Use the following format if the book you are using is *only* provided in a digital format or is difficult to find in print. If the work is not directly available online or must be purchased, use "Available from," rather than "Retrieved from," and point readers to where they can find it. For books available in print form and electronic form, include the publish date in parentheses after the author's name.

De Huff, E. W. (n.d.). *Taytay's tales: Traditional Pueblo Indian tales*. Retrieved from <http://digital.library.upenn.edu/women/dehuff/taytay/taytay.html>

Davis, J. (n.d.). *Familiar birdsongs of the Northwest*. Available from <http://www.powells.com/cgi-bin/biblio?inkey=1-9780931686108-0>

### **Chapter/Section of a Web document or Online Book Chapter**

Author, A. A., & Author, B. B. (Date of publication). Title of article. In *Title of book or larger document* (chapter or section number). Retrieved from <http://www.someaddress.com/full/url/>

Engelshcall, R. S. (1997). Module mod\_rewrite: URL Rewriting Engine. In *Apache HTTP Server Version 1.3 Documentation* (Apache modules.) Retrieved from [http://httpd.apache.org/docs/1.3/mod/mod\\_rewrite.html](http://httpd.apache.org/docs/1.3/mod/mod_rewrite.html)

Peckinpugh, J. (2003). Change in the Nineties. In J. S. Bough and G. B. DuBois (Eds.), *A century of growth in America*. Retrieved from GoldStar database.

**NOTE:** Use a chapter or section identifier and provide a URL that links directly to the chapter section, not the home page of the Web site.

### **Online Book Reviews**

Cite the information as you normally would for the work you are quoting. (The first example below is from a newspaper article; the second is from a scholarly journal.) In brackets, write "Review of the book" and give the title of the reviewed work. Provide the web address after the words "Retrieved from," if the review is freely available to anyone. If the review comes from a subscription service or database, write "Available from" and provide the information where the review can be purchased.

Zacharek, S. (2008, April 27). Natural women [Review of the book *Girls like us*]. *The New York Times*. Retrieved from <http://www.nytimes.com/2008/04/27/books/review/Zacharek-t.html?pagewanted=2>

Castle, G. (2007). New millennial Joyce [Review of the books *Twenty-first Joyce*, *Joyce's critics: Transitions in reading and culture*, and *Joyce's messianism: Dante, negative existence, and the messianic self*]. *Modern Fiction Studies*, 50(1), 163-173. Available from Project MUSE Web site: [http://muse.jhu.edu/journals/modern\\_fiction\\_studies/toc/mfs52.1.html](http://muse.jhu.edu/journals/modern_fiction_studies/toc/mfs52.1.html)

### **Dissertation/Thesis from a Database**

Biswas, S. (2008). *Dopamine D3 receptor: A neuroprotective treatment target in Parkinson's disease*. Retrieved from ProQuest Digital Dissertations. (AAT 3295214)

### Online Encyclopedias and Dictionaries

Often encyclopedias and dictionaries do not provide bylines (authors' names). When no byline is present, move the entry name to the front of the citation. Provide publication dates if present or specify (n.d.) if no date is present in the entry.

Feminism. (n.d.). In *Encyclopædia Britannica online*. Retrieved from <http://www.britannica.com/EBchecked/topic/724633/feminism>

### Online Bibliographies and Annotated Bibliographies

Jürgens, R. (2005). *HIV/AIDS and HCV in Prisons: A Select Annotated Bibliography*. Retrieved from [http://www.hc-sc.gc.ca/ahc-asc/alt\\_formats/hpb-dgps/pdf/intactiv/hiv-vih-aids-sida-prison-carceral\\_e.pdf](http://www.hc-sc.gc.ca/ahc-asc/alt_formats/hpb-dgps/pdf/intactiv/hiv-vih-aids-sida-prison-carceral_e.pdf)

### Data Sets

Point readers to raw data by providing a Web address (use "Retrieved from") or a general place that houses data sets on the site (use "Available from").

United States Department of Housing and Urban Development. (2008). *Indiana income limits* [Data file]. Retrieved from [http://www.huduser.org/Datasets/IL/IL08/in\\_fy2008.pdf](http://www.huduser.org/Datasets/IL/IL08/in_fy2008.pdf)

### Graphic Data (e.g. Interactive Maps and Other Graphic Representations of Data)

Give the name of the researching organization followed by the date. In brackets, provide a brief explanation of what type of data is there and in what form it appears. Finally, provide the project name and retrieval information.

Solar Radiation and Climate Experiment. (2007). [Graph illustration the SORCE Spectral Plot May 8, 2008]. *Solar Spectral Data Access from the SIM, SOLSTICE, and XPS Instruments*. Retrieved from [http://lasp.colorado.edu/cgi-bin/ion-p?page=input\\_data\\_for\\_spectra.ion](http://lasp.colorado.edu/cgi-bin/ion-p?page=input_data_for_spectra.ion)

### Qualitative Data and Online Interviews

If an interview is not retrievable in audio or print form, cite the interview only in the text (not in the reference list) and provide the month, day, and year in the text. If an audio file or transcript is available online, use the following model, specifying the medium in brackets (e.g. [Interview transcript, Interview audio file]):

Butler, C. (Interviewer) & Stevenson, R. (Interviewee). (1999). *Oral History 2* [Interview transcript]. Retrieved from Johnson Space Center Oral Histories Project Web site: [http://www11.jsc.nasa.gov/history/oral\\_histories/oral\\_histories.htm](http://www11.jsc.nasa.gov/history/oral_histories/oral_histories.htm)

### Online Lecture Notes and Presentation Slides

When citing online lecture notes, be sure to provide the file format in brackets after the lecture title (e.g. PowerPoint slides, Word document).

Hallam, A. *Duality in consumer theory* [PDF document]. Retrieved from Lecture Notes Online Web site: <http://www.econ.iastate.edu/classes/econ501/Hallam/index.html>

Roberts, K. F. (1998). *Federal regulations of chemicals in the environment* [PowerPoint slides]. Retrieved from <http://siri.uvm.edu/ppt/40hrenv/index.html>

### Nonperiodical Web Document, Web Page, or Report

List as much of the following information as possible (you sometimes have to hunt around to find the information; don't be lazy. If there is a page like <http://www.somesite.com/somepage.htm>, and [somepage.htm](http://www.somesite.com/somepage.htm) doesn't have the information you're looking for, move up the URL to <http://www.somesite.com/>):

Author, A. A., & Author, B. B. (Date of publication). *Title of document*. Retrieved from <http://Web address>

Angeli, E., Wagner, J., Lawrick, E., Moore, K., Anderson, M., Soderland, L., & Brizee, A. (2010, May 5). *General format*. Retrieved from <http://owl.english.purdue.edu/owl/resource/560/01/>

**NOTE:** When an Internet document is more than one Web page, provide a URL that links to the home page or entry page for the document. Also, if there isn't a date available for the document use (n.d.) for no date.

### Computer Software/Downloaded Software

Do not cite standard office software (e.g. Word, Excel) or programming languages. Provide references only for specialized software.

Ludwig, T. (2002). *PsychInquiry* [computer software]. New York: Worth.

Software that is downloaded from a Web site should provide the software's version and year when available.

Hayes, B., Tesar, B., & Zuraw, K. (2003). *OTSoft: Optimality Theory Software (Version 2.1)* [Software]. Available from <http://www.linguistics.ucla.edu/people/hayes/otsoft/>

### E-mail

E-mails are not included in the list of references, though you parenthetically cite them in your main text: (E. Robbins, personal communication, January 4, 2001).

### Online Forum or Discussion Board Posting

Include the title of the message, and the URL of the newsgroup or discussion board. Please note that titles for items in online communities (e.g. blogs, newsgroups, forums) are not italicized. If the author's name is not available, provide the screen name. Place identifiers like post or message numbers, if available, in brackets. If available, provide the URL where the message is archived (e.g. "Message posted to..., archived at...").

Frook, B. D. (1999, July 23). New inventions in the cyberworld of toylandia [Msg 25]. Message posted to <http://groups.earthlink.com/forum/messages/00025.html>

### Blog (Weblog) and Video Blog Post

Include the title of the message and the URL. Please note that titles for items in online communities (e.g. blogs, newsgroups, forums) are not italicized. If the author's name is not available, provide the screen name.

Dean, J. (2008, May 7). When the self emerges: Is that me in the mirror? [Web log comment]. Retrieved from <http://www.spring.org.uk/the1sttransport>. (2004, September 26). Psychology Video Blog #3 [Video file]. Retrieved from <http://www.youtube.com/watch?v=lqM90eQi5-M>

### Wikis

Please note that the *APA Style Guide to Electronic References* warns writers that wikis (like Wikipedia, for example) are collaborative projects which cannot guarantee the verifiability or expertise of their entries.

OLPC Peru/Arahuay. (n.d.). Retrieved from the OLPC Wiki: [http://wiki.laptop.org/go/OLPC\\_Peru/Arahuay](http://wiki.laptop.org/go/OLPC_Peru/Arahuay)

### Audio Podcast

For all podcasts, provide as much information as possible; not all of the following information will be available. Possible addition identifiers may include Producer, Director, etc.

Bell, T. & Phillips, T. (2008, May 6). A solar flare. *Science @ NASA Podcast*. Podcast retrieved from <http://science.nasa.gov/podcast.htm>

### Video Podcasts

For all podcasts, provide as much information as possible; not all of the following information will be available. Possible addition identifiers may include Producer, Director, etc.

Scott, D. (Producer). (2007, January 5). The community college classroom [Episode 7]. *Adventures in Education*. Podcast retrieved from <http://www.adveeducation.com>



For more help with citing electronic sources, please use these links:

- [Documenting Electronic Sources](#)
- [APA style web site's coverage of electronic references](#)
- [APA Frequently Asked Questions](#)

**Contributors:** Elizabeth Angeli, Jodi Wagner, Elena Lawrick, Kristen Moore, Michael Anderson, Lars Soderlund, Allen Brizee.

**Summary:**

APA (American Psychological Association) is most commonly used to cite sources within the social sciences. This resource, revised according to the **6th edition** of the APA manual, offers examples for the general format of APA research papers, in-text citations, endnotes/footnotes, and the reference page. For more information, please consult the *Publication Manual of the American Psychological Association*, 6th edition, second printing.

## Reference List: Other Non-Print Sources

### Interviews, Email, and Other Personal Communication

No personal communication is included in your reference list; instead, parenthetically cite the communicators name, the fact that it was personal communication, and the date of the communication in your main text only.

(E. Robbins, personal communication, January 4, 2001).

A. P. Smith also claimed that many of her students had difficulties with APA style (personal communication, November 3, 2002).

### Motion Picture

Basic reference list format:

Producer, P. P. (Producer), & Director, D. D. (Director). (Date of publication). *Title of motion picture* [Motion picture]. Country of origin: Studio or distributor.

**Note:** If a movie or video tape is not available in wide distribution, add the following to your citation after the country of origin: (Available from Distributor name, full address and zip code).

### A Motion Picture or Video Tape with International or National Availability

Smith, J. D. (Producer), & Smithee, A. F. (Director). (2001). *Really big disaster movie* [Motion picture]. United States: Paramount Pictures.

### **A Motion Picture or Video Tape with Limited Availability**

Harris, M. (Producer), & Turley, M. J. (Director). (2002). *Writing labs: A history* [Motion picture]. (Available from Purdue University Pictures, 500 Oval Drive, West Lafayette, IN 47907)

### **Television Broadcast or Series Episode**

Producer, P. P. (Producer). (Date of broadcast or copyright). Title of broadcast [ *Television broadcast or Television series* ]. City of origin: Studio or distributor.

### **Single Episode of a Television Series**

Writer, W. W. (Writer), & Director, D. D. (Director). (Date of publication). Title of episode [Television series episode]. In P. Producer (Producer), *Series title*. City of origin: Studio or distributor.

Wendy, S. W. (Writer), & Martian, I. R. (Director). (1986). The rising angel and the falling ape [Television series episode]. In D. Dude (Producer), *Creatures and monsters*. Los Angeles, CA: Belarus Studios.

### **Television Broadcast**

Important, I. M. (Producer). (1990, November 1). *The nightly news hour* [Television broadcast]. New York, NY: Central Broadcasting Service.

### **A Television Series**

Bellisario, D.L. (Producer). (1992). *Exciting action show* [Television series]. Hollywood: American Broadcasting Company.

### **Music Recording**

Songwriter, W. W. (Date of copyright). Title of song [Recorded by artist if different from song writer]. On *Title of album* [Medium of recording]. Location: Label. (Recording date if different from copyright date).

Taupin, B. (1975). Someone saved my life tonight [Recorded by Elton John]. On *Captain fantastic and the brown dirt cowboy* [CD]. London, England: Big Pig Music Limited.

For more about citing audiovisual media, see pages 209-210 of the APA Publication Manual 6th Edition, second printing.

For information about citing legal sources in your reference list, see [the Westfield State College page on Citing Legal Materials in APA Style](#).

**Contributors:** Elizabeth Angeli, Jodi Wagner, Elena Lawrick, Kristen Moore, Michael Anderson, Lars Soderlund, Allen Brizee.

**Summary:**

APA (American Psychological Association) is most commonly used to cite sources within the social sciences. This resource, revised according to the **6th edition** of the APA manual, offers examples for the general format of APA research papers, in-text citations, endnotes/footnotes, and the reference page. For more information, please consult the *Publication Manual of the American Psychological Association*, 6th edition, second printing.

## Additional Resources

It's always best to consult the Publication Manual first for any APA question. If you are using APA style for a class assignment, it's a good idea to consult your professor, advisor, TA, or other campus resources for help with using APA style—they're the ones who can tell you how the style should apply in your particular case. For extraordinary questions that aren't covered clearly in the style manual or haven't been answered by your teacher or advisor, contact the Writing Lab for help at (765) 494-3723 or [email by using our OWL tutor email form](#).

### Print Resources

Here are some print resources for using APA style. Click The Purdue OWL does not make any profit from nor does it endorse these agencies; links are merely offered for information. Most of these books are probably available in your local library. From the American Psychological Association:

- *Publication Manual of the American Psychological Association* (6th edition) (ISBN 13: 978-1-4338-0561-5; ISBN 10: 1-4338-0561-8)
- *Mastering APA Style: Student's Workbook and Training Guide* (ISBN: 1557988919)
- *Mastering APA Style: Instructor's Resource Guide* (ISBN: 1557988900)
- *Displaying Your Findings: A Practical Guide for Creating Figures, Posters, and Presentations* (ISBN: 1557989788)

From other publishers:

- *The World's Easiest Guide to Using the APA* (ISBN: 0964385317)
- *Writing With Style: APA Style Made Easy* (ISBN: 0534363652)
- *Writing With Style: APA Style for Social Work* (ISBN: 0534263119)

### Online Resources from the APA

- [APA Style Website](#)

### Other Online Resources: Style Templates and Sample Papers

- [APA Simulated Journal Article](#) (from Elmira College)

- [A Sample Paper in American Psychological Association Style](#) (From Valencia Community College)
- [Sample reference list](#) (from Vanier College)

### Other Online Resources: Documenting and Referencing Sources

- [Using APA Style to Cite and Document Sources](#) (from Bedford St. Martin's *Online!*)
- [How to Cite Online Nursing Resources Using APA Style](#) (from the University of Nevada at Reno)
- [APA Citation Style: Examples for Nursing Students](#) (from College of St. Benedict/St. John's University)
- [Citing Legal Materials in APA Style](#) (Westfield State College)

**Contributors:** Elizabeth Angeli, Jodi Wagner, Elena Lawrick, Kristen Moore, Michael Anderson, Lars Soderlund, Allen Brizee.

#### Summary:

APA (American Psychological Association) is most commonly used to cite sources within the social sciences. This resource, revised according to the **6th edition** of the APA manual, offers examples for the general format of APA research papers, in-text citations, endnotes/footnotes, and the reference page. For more information, please consult the *Publication Manual of the American Psychological Association*, 6th edition, second printing.

## Types of APA Papers

There are two common types of papers written in fields using APA Style: the literature review and the experimental report. Each has unique requirements concerning the sections that must be included in the paper.

### Literature Review

A literature review is a summary of what the scientific literature says about your specific topic or question. Often student research in APA fields falls into this category. Your professor might ask you to write this kind of paper to demonstrate your familiarity with work in the field pertinent to the research you hope to conduct.

A literature review typically contains the following sections:

- title page
- introduction section
- list of references

Some instructors may also want you to write an abstract for a literature review, so be sure to check with them when given an assignment. Also, the length of a literature review and the required number of sources will vary based on course and instructor preferences.

**NOTE:** A literature review and an annotated bibliography are **not** synonymous. If you are asked to write an annotated bibliography, you should consult the *Publication Manual* for the APA Format for Annotated Bibliographies.

## Experimental Report

In many of the social sciences, you will be asked to design and conduct your own experimental research. If so, you will need to write up your paper using a structure that is more complex than that used for just a literature review. We have a complete resource devoted to writing an experimental report in the field of psychology here.

This structure follows the scientific method, but it also makes your paper easier to follow by providing those familiar cues that help your reader efficiently scan your information for:

- why the topic is important (covered in your introduction)
- what the problem is (also covered in your introduction)
- what you did to try to solve the problem (covered in your methods section)
- what you found (covered in your results section)
- what you think your findings mean (covered in your discussion section)

Thus an experimental report typically includes the following sections:

- title page
- abstract
- introduction
- method
- results
- discussion
- references
- appendixes (if necessary)
- tables and/or figures (if necessary)

Make sure to check the guidelines for your assignment or any guidelines that have been given to you by an editor of a journal before you submit a manuscript containing the sections listed above.

As with the literature review, the length of this report may vary by course or by journal, but most often it will be determined by the scope of the research conducted.

## Other Papers

If you are writing a paper that fits neither of these categories, follow the guidelines about **General Format**, consult your instructor, or look up advice in the *Publication Manual*.

When submitting a manuscript to a journal, make sure you follow the guidelines described in the submission policies of that publication, and include as many sections as you think are applicable to presenting your material. Remember to keep your audience in mind as you are making this decision. If certain information is particularly

pertinent for conveying your research, then ensure that there is a section of your paper that adequately addresses that information.

**Contributors:** Elizabeth Angeli, Jodi Wagner, Elena Lawrick, Kristen Moore, Michael Anderson, Lars Soderlund, Allen Brizee.

**Summary:**

APA (American Psychological Association) is most commonly used to cite sources within the social sciences. This resource, revised according to the **6th edition** of the APA manual, offers examples for the general format of APA research papers, in-text citations, endnotes/footnotes, and the reference page. For more information, please consult the *Publication Manual of the American Psychological Association*, 6th edition, second printing.

## APA Stylistics: Avoiding Bias

Researchers who use APA often work with a variety of populations, some of whom tend to be stereotyped by the use of labels and other biased forms of language. Therefore, APA offers specific recommendations for eliminating bias in language concerning race, disability, and sexuality.

### Make Adjustments to Labels

Although you should avoid labeling whenever possible, it is sometimes difficult to accurately account for the identity of your research population or individual participants without using language that can be read as biased. Making adjustments in how you use identifiers and other linguistic categories can improve the clarity of your writing and minimize the likelihood of offending your readers.

In general, you should call people what they prefer to be called, especially when dealing with race and ethnicity. But sometimes the common conventions of language inadvertently contain biases towards certain populations - e.g. using "normal" in contrast to someone identified as "disabled." Therefore, you should be aware of how your choice of terminology may come across to your reader, particularly if they identify with the population in question.

You can find an in-depth discussion of this issue and specific recommendations for how to appropriately represent people in your text on the APA website on the following pages:

- [Removing Bias in Language: Disabilities](#)
- [Removing Bias in Language: Race & Ethnicity](#)
- [Removing Bias in Language: Sexuality](#)

### Avoid Gendered Pronouns

While you should always be clear about the sex identity of your participants (if you conducted an experiment), so that gender differences are obvious, you should not use

gender terms when they aren't necessary. In other words, you should not use "he," "his" or "men" as generic terms applying to both sexes.

APA does not recommend replacing "he" with "he or she," "she or he," "he/she," "(s) he," "s/he," or alternating between "he" and "she" because these substitutions are awkward and can distract the reader from the point you are trying to make. The pronouns "he" or "she" inevitably cause the reader to think of only that gender, which may not be what you intend.

To avoid the bias of using gendered pronouns:

- Rephrase the sentence
- Use plural nouns or plural pronouns - this way you can use "they" or "their"
- Replace the pronoun with an article - instead of "his," use "the"
- Drop the pronoun - many sentences sound fine if you just omit the troublesome "his" from the sentence
- Replace the pronoun with a noun such as "person," "individual," "child," "researcher," etc.

For more about addressing gender in academic writing, visit the OWL's handout on [non-sexist language](#) use.

### Find Alternative Descriptors

To avoid unintentional biases in your language, look to the parameters of your research itself. When writing up an experimental report, describe your participants by the measures you used to classify them in the experiment, as long as the labels are not offensive.

**Example:** If you had people take a test measuring their reaction times and you were interested in looking at the differences between people who had fast reaction times and those with slow reaction times, you could call the first group the "fast reaction time group" and the second the "slow reaction time group."

Also, use adjectives to serve as descriptors rather than labels. When you use terms such as "the elderly" or "the amnesiacs," the people lose their individuality. One way to avoid this is to insert an adjective (e.g., "elderly people," "amnesic patients"). Another way is to mention the person first and follow this with a descriptive phrase (e.g., "people diagnosed with amnesia"), although it can be cumbersome to keep repeating phrases like this.

**Contributors:** Elizabeth Angeli, Jodi Wagner, Elena Lawrick, Kristen Moore, Michael Anderson, Lars Soderlund, Allen Brizee.

### Summary:

APA (American Psychological Association) is most commonly used to cite sources within the social sciences. This resource, revised according to the **6th edition** of the APA manual, offers examples for the general format of APA research papers, in-text citations, endnotes/footnotes, and the reference page. For more information, please consult the *Publication Manual of the American Psychological Association*, 6th edition, second printing.



# APA Stylistics: Basics

Writing in APA is more than simply learning the formula for citations or following a certain page layout. APA also includes the stylistics of your writing, from point of view to word choice.

## Point of View and Voice

When writing in APA Style, you rarely use the first person point of view ("I studied ..."). First person is not often found in APA publications unless the writer is a senior scholar who has earned some credibility to speak as an expert in the field.

You should use the third person point of view ("The study showed ...") unless you are co-authoring a paper with at least one other person, in which case you can use "we" ("Our finding included ..."). In general, you should foreground the research and not the researchers.

However, it is a common misconception that foregrounding the research requires using the passive voice ("Experiments have been conducted ..."). This is inaccurate.

APA Style encourages using the active voice ("We conducted an experiment ..."). The active voice is particularly important in experimental reports, where the subject performing the action should be clearly identified (e.g. "We interviewed ..." vs. "The participants responded ...").

Consult the OWL handout for more on the distinction between [passive and active voice](#).

## Clarity and Conciseness

Clarity and conciseness in writing are important when conveying research in APA Style. You don't want to misrepresent the details of a study or confuse your readers with wordiness or unnecessarily complex sentences.

For clarity, be specific rather than vague in descriptions and explanations. Unpack details accurately to provide adequate information to your readers so they can follow the development of your study.

**Example:** "It was predicted that marital conflict would predict behavior problems in school-aged children."

To clarify this vague hypothesis, use parallel structure to outline specific ideas:

"The first hypothesis stated that marital conflict would predict behavior problems in school-aged children. The second hypothesis stated that the effect would be stronger for girls than for boys. The third hypothesis stated that older girls would be more affected by marital conflict than younger girls."



To be more concise, particularly in introductory material or abstracts, you should pare out unnecessary words and condense information when you can (see the OWL handout on [Conciseness](#) in academic writing for suggestions).

**Example:** The above list of hypotheses might be rephrased concisely as: "The authors wanted to investigate whether marital conflict would predict behavior problems in children and they wanted to know if the effect was greater for girls than for boys, particularly when they examined two different age groups of girls."

Balancing the need for clarity, which can require unpacking information, and the need for conciseness, which requires condensing information, is a challenge. Study published articles and reports in your field for examples of how to achieve this balance.

### Word Choice

You should even be careful in selecting certain words or terms. Within the social sciences, commonly used words take on different meanings and can have a significant effect on how your readers interpret your reported findings or claims. To increase clarity, avoid bias, and control how your readers will receive your information, you should make certain substitutions:

- Use terms like "participants" or "respondents" (rather than "subjects") to indicate how individuals were involved in your research
- Use terms like "children" or "community members" to provide more detail about who was participating in the study
- Use phrases like "The evidence *suggests* ..." or "Our study *indicates* ..." rather than referring to "proof" or "proves" because no single study can prove a theory or hypothesis

As with the other stylistic suggestions here, you should study the discourse of your field to see what terminology is most often used.

### Avoiding Poetic Language

Writing papers in APA Style is unlike writing in more creative or literary styles that draw on poetic expressions and figurative language. Such linguistic devices can detract from conveying your information clearly and may come across to readers as forced when it is inappropriately used to explain an issue or your findings.

Therefore, you should:

- minimize the amount of figurative language used in an APA paper, such as metaphors and analogies unless they are helpful in conveying a complex idea
- avoid rhyming schemes, alliteration, or other poetic devices typically found in verse
- use simple, descriptive adjectives and plain language that does not risk confusing your meaning

**Contributors:** Elizabeth Angeli, Jodi Wagner, Elena Lawrick, Kristen Moore, Michael Anderson, Lars Soderlund, Allen Brizee.

**Summary:**

APA (American Psychological Association) is most commonly used to cite sources within the social sciences. This resource, revised according to the **6th edition** of the APA manual, offers examples for the general format of APA research papers, in-text citations, endnotes/footnotes, and the reference page. For more information, please consult the *Publication Manual of the American Psychological Association*, 6th edition, second printing.

## APA Headings and Seriation

### Headings

APA Style uses a unique headings system to separate and classify paper sections. There are 5 **heading levels** in APA. *The 6th edition of the APA manual revises and simplifies previous heading guidelines.* Regardless of the number of levels, always use the headings in order, beginning with level 1. The format of each level is illustrated below:

APA Headings	
Level	Format
1	<b>Centered, Boldface, Uppercase and Lowercase Headings</b>
2	<b>Left-aligned, Boldface, Uppercase and Lowercase Heading</b>
3	<b>Indented, boldface, lowercase heading with a period.</b>
4	<i>Indented, boldface, italicized, lowercase heading with a period.</i>
5	<i>Indented, italicized, lowercase heading with a period.</i>

Thus, if the article has four sections, some of which have subsection and some of which don't, use headings depending on the level of subordination. Section headings receive level one format. Subsections receive level two format. Subsections of subsections receive level three format. For example:

**Methods** (Level 1)

**Site of Study** (Level 2)

**Participant Population** (Level 2)

**Teachers.** (Level 3)

**Students.** (Level 3)

**Results** (Level 1)

**Spatial Ability** (Level 2)

**Test one.** (level 3)

*Teachers with experience.* (Level 4)

*Teachers in training.* (Level 4)

**Test two.** (Level 3)**Kinesthetic Ability** (Level 2)

In APA Style, the Introduction section never gets a heading and headings are not indicated by letters or numbers. Levels of headings will depend upon the length and organization of your paper. Regardless, always begin with level one headings and proceed to level two, etc.

**Seriation**

APA also allows for seriation in the body text to help authors organize and present key ideas. For numbered seriation, do the following:

Based on the four generations of usability testing on the Purdue OWL, the Purdue OWL Usability Team recommended the following:

1. Move the navigation bar from the right to the left side of the OWL pages.
2. Integrate branded graphics (the Writing Lab and OWL logos) into the text on the OWL homepage.
3. Add a search box to every page of the OWL.
4. Develop an OWL site map.
5. Develop a three-tiered navigation system.

For lists that do not communicate hierarchical order or chronology, use bullets:

In general, participants found user-centered OWL mock up to be easier to use. What follows are samples of participants' responses:

- "This version is easier to use."
- "Version two seems better organized."
- "It took me a few minutes to learn how to use this version, but after that, I felt more comfortable with it."

Authors may also use seriation for paragraph length text.

For seriation within sentences, authors may use letters:

Based on the research conducted by the usability team, OWL staff have completed (a) the OWL site map; (b) integrating graphics with text on the OWL homepage; (c) search boxes on all OWL pages except the orange OWL resources (that is pending; we do have a search page); (d) moving the navigation bar to the left side of pages on all OWL resources except in the orange area (that is pending); (e) piloting the first phase of the three-tiered navigation system, as illustrated in the new Engagement section.

Authors may also separate points with bullet lists:

Based on the research conducted by the usability team, OWL staff have completed

- the OWL site map;
- integrating graphics with text on the OWL homepage;
- search boxes on all OWL pages except the orange OWL resources (that is pending; we do have a search page);
- moving the navigation bar to the left side of pages on all OWL resources except in the orange area (that is pending);
- piloting the first phase of the three-tiered navigation system, as illustrated in the new Engagement section.

**Contributors:** Elizabeth Angeli, Jodi Wagner, Elena Lawrick, Kristen Moore, Michael Anderson, Lars Soderlund, Allen Brizee.

**Summary:**

APA (American Psychological Association) is most commonly used to cite sources within the social sciences. This resource, revised according to the **6th edition** of the APA manual, offers examples for the general format of APA research papers, in-text citations, endnotes/footnotes, and the reference page. For more information, please consult the *Publication Manual of the American Psychological Association*, 6th edition, second printing.

## APA PowerPoint Slide Presentation

Select the APA PowerPoint Presentation link in the Media box above to download slides that provide a detailed review of the APA citation style.

**Contributors:** Elizabeth Angeli, Jodi Wagner, Elena Lawrick, Kristen Moore, Michael Anderson, Lars Soderlund, Allen Brizee.

**Summary:**

APA (American Psychological Association) is most commonly used to cite sources within the social sciences. This resource, revised according to the **6th edition** of the APA manual, offers examples for the general format of APA research papers, in-text citations, endnotes/footnotes, and the reference page. For more information, please consult the *Publication Manual of the American Psychological Association*, 6th edition, second printing.

## Sample APA Paper

Click on the link above in the Media box to download the pdf handout, Sample APA Paper.

**Contributors:** Elizabeth Angeli, Jodi Wagner, Elena Lawrick, Kristen Moore, Michael Anderson, Lars Soderlund, Allen Brizee.

**Summary:**

APA (American Psychological Association) is most commonly used to cite sources within the social sciences. This resource, revised according to the **6th edition** of the

APA manual, offers examples for the general format of APA research papers, in-text citations, endnotes/footnotes, and the reference page. For more information, please consult the *Publication Manual of the American Psychological Association*, 6th edition, second printing.

## APA Tables and Figures 1

The purpose of tables and figures in documents is to enhance your readers' understanding of the information in the document. Most word processing software available today will allow you to create your own tables and figures, and even the most basic of word processors permit the embedding of images, thus enabling you to include tables and figures in almost any document.

### General Guidelines

**Necessity.** Visual material such as tables and figures can be used quickly and efficiently to present a large amount of information to an audience, but visuals must be used to assist communication, not to use up space, or disguise marginally significant results behind a screen of complicated statistics. Ask yourself this question first: is the table or figure necessary? For example, it is better to present simple descriptive statistics in the text, not in a table.

**Relation of Tables or Figures and Text.** Because tables and figures supplement the text, refer in the text to all tables and figures used and explain what the reader should look for when using the table or figure. Focus only on the important point the reader should draw from them, and leave the details for the reader to examine on her own.

**Documentation.** If you are using figures, tables and/or data from other sources, be sure to gather all the information you will need to properly document your sources.

**Integrity and Independence.** Each table and figure must be intelligible without reference to the text, so be sure to include an explanation of every abbreviation (except the standard statistical symbols and abbreviations).

**Organization, Consistency and Coherence.** Number all tables sequentially as you refer to them in the text (Table 1, Table 2, etc.), likewise for figures (Figure 1, Figure 2, etc.). Abbreviations, terminology, probability level values must be consistent across tables and figures in the same article. Likewise, formats, titles, and headings must be consistent. Do not repeat the same data in different tables.

## Tables

### Table Checklist

- Is the table necessary?
- Is the entire table double spaced (including the title, headings, and notes)?
- Are all comparable tables presented consistently?
- Is the title brief but explanatory?
- Does every column have a column heading?

- Are all abbreviations; special use of italics, parentheses, and dashes; and special symbols explained?
- Are all probability level values correctly identified, and are asterisks attached to the appropriate table entries? Is a probability level assigned the same number of asterisks in all the tables in the same document?
- Are the notes organized according to the convention of general, specific, probability?
- Are all vertical rules eliminated?
- If the table or its data are from another source, is the source properly cited?
- Is the table referred to in the text?

## Tables

Data in a table that would require only two or fewer columns and rows should be presented in the text. More complex data is better presented in tabular format. In order for quantitative data to be presented clearly and efficiently, it must be arranged logically, e.g. data to be compared must be presented next to one another (before/after, young/old, male/female, etc.), and statistical information (means, standard deviations, N values) must be presented in separate parts of the table. If possible, use canonical forms (such as ANOVA, regression, or correlation) to communicate your data effectively.

<b>Table 1</b>			
<i>Dogs Scoring Above Average on Intelligence by Breed and Gender</i>			
<b>Breed</b>	<b>Male</b>	<b>Female</b>	<b>%</b>
Dachshund	123	234	17.6
Terrier	456	567	31.1
Siberian Huskv <sup>a</sup>	789	891	51.3
<b>Totals (N = 3060)</b>	<b>1368</b>	<b>1692</b>	
<i>Note.</i> Average score = 150. No animals were harmed during testing.			
*Three huskies (one male, two female) escaped before testing was completed and are therefore included in the table.			

Image Caption: Table 1

## Table Structure

The following image illustrates the basic structure of tables.

Table 2			
Title			
Header			
Stubhead	Column head	Column head	Column head
Row 1	123	234	17.6
Row 2	456	567	31.1
Row 3	789	891	51.3
Row 4	1368	1692	

Image Caption: Table 2

**Numbers.** Number all tables with arabic numerals sequentially. Do not use suffix letters (e.g. Table 3a, 3b, 3c); instead, combine the related tables. If the manuscript includes an appendix with tables, identify them with capital letters and Arabic numerals (e.g. Table A1, Table B2).

**Titles.** Like the title of the paper itself, each table must have a clear and concise title. When appropriate, you may use the title to explain an abbreviation parenthetically.

Example: *Comparison of Median Income of Adopted Children (AC) v. Foster Children (FC)*

**Headings.** Keep headings clear and brief. The heading should not be much wider than the widest entry in the column. Use of standard abbreviations can aid in achieving that goal. All columns must have headings, even the stub column (see example structure), which customarily lists the major independent variables.

**Body.** In reporting the data, consistency is key: Numerals should be expressed to a consistent number of decimal places that is determined by the precision of measurement. Never change the unit of measurement or the number of decimal places in the same column.

### Specific Types of Tables

**Analysis of Variance (ANOVA) Tables.** The conventional format for an ANOVA table is to list the source in the stub column, then the degrees of freedom (df) and the  $F$  ratios. Give the between-subject variables and error first, then within-subject and any error. Mean square errors must be enclosed in parentheses. Provide a general note to the table to explain what those values mean (see example). Use asterisks to identify statistically significant  $F$  ratios, and provide a probability footnote.

Table 3				
<i>Sample ANOVA Table</i>				
Stubhead	<i>df</i>	<i>F</i>	$\eta$	<i>p</i>
	Column spanner			
Row 1	1	0.67	.55	.41
Row 2	2	0.02	.01	.39
Row 3	3	0.15	.33	.34
Row 4	4	1.00	.76	.54
<p><i>Note:</i> This is where authors provide extra information important to the data, such as findings that approach statistical significance depending on the <i>p</i> value: Significant at the <math>p &lt; 0.05</math> level.</p>				

Image Caption: Table 3 ANOVA Table

**Regression.** Conventional reporting of regression analysis follows two formats. If the study is purely applied, list only the raw or unstandardized coefficients ( $B$ ). If the study is purely theoretical, list only the standardized coefficients ( $\beta$ ). If the study was neither purely applied nor theoretical, then list both standardized and unstandardized coefficients. Specify the type of analysis, either hierarchical or simultaneous, and provide the increments of change if you used hierarchical regression.

Table 4			
<i>Sample Regression Table</i>			
Stubhead	<i>B</i>	<i>SE B</i>	$\beta$
Row 1			
Row 2	-4.56	1.87	-.34
Row 3	0.43	0.23	.86
Row 4			
Row 5	-1.22	1.43	-.66
Row 6	0.89	0.65	.38
Row 7	0.77	0.83	-.01
<p><i>Notes:</i> <math>R^2 = .34</math> (<math>ps &lt; .05</math>).</p>			

Image Caption: Table 4 Regression Table



## Notes in Tables

There are three types of notes for tables: general, specific, and probability notes. All of them must be placed below the table in that order.

**General** notes explain, qualify or provide information about the table as a whole. Put explanations of abbreviations, symbols, etc. here.

Example: *Note*. The racial categories used by the US Census (African-American, Asian American, Latinos/-as, Native-American, and Pacific Islander) have been collapsed into the category “non-White.” E = excludes respondents who self-identified as “White” and at least one other “non-White” race.

**Specific** notes explain, qualify or provide information about a particular column, row, or individual entry. To indicate specific notes, use superscript lowercase letters (e.g. <sup>a</sup>, <sup>b</sup>, <sup>c</sup>), and order the superscripts from left to right, top to bottom. Each table’s first footnote must be the superscript a.

Example: <sup>a</sup> n = 823. <sup>b</sup> One participant in this group was diagnosed with schizophrenia during the survey.

**Probability** notes provide the reader with the results of the tests for statistical significance. Asterisks indicate the values for which the null hypothesis is rejected, with the probability (p value) specified in the probability note. Such notes are required only when relevant to the data in the table. Consistently use the same number of asterisks for a given alpha level throughout your paper.

Example: \* $p < .05$ . \*\* $p < .01$ . \*\*\* $p < .001$

Image Caption: Sample Table Notes

If you need to distinguish between two-tailed and one-tailed tests in the same table, use asterisks for two-tailed p values and an alternate symbol (such as daggers) for one-tailed p values.

Example: \* $p < .05$ , two-tailed. \*\* $p < .01$ , two-tailed. † $p < .05$ , one-tailed. †† $p < .01$ , one-tailed.

Image Caption: More Table Notes

## Tables from Other Sources

If using tables from a source, copy the structure of the original exactly, and cite the source in accordance with [APA style](#).

**Contributors:** Elizabeth Angeli, Jodi Wagner, Elena Lawrick, Kristen Moore, Michael Anderson, Lars Soderlund, Allen Brizee.

**Summary:**

APA (American Psychological Association) is most commonly used to cite sources within the social sciences. This resource, revised according to the **6th edition** of the APA manual, offers examples for the general format of APA research papers, in-text citations, endnotes/footnotes, and the reference page. For more information, please consult the *Publication Manual of the American Psychological Association*, 6th edition, second printing.

## APA Tables and Figures 2

### Figures

#### Figure Checklist

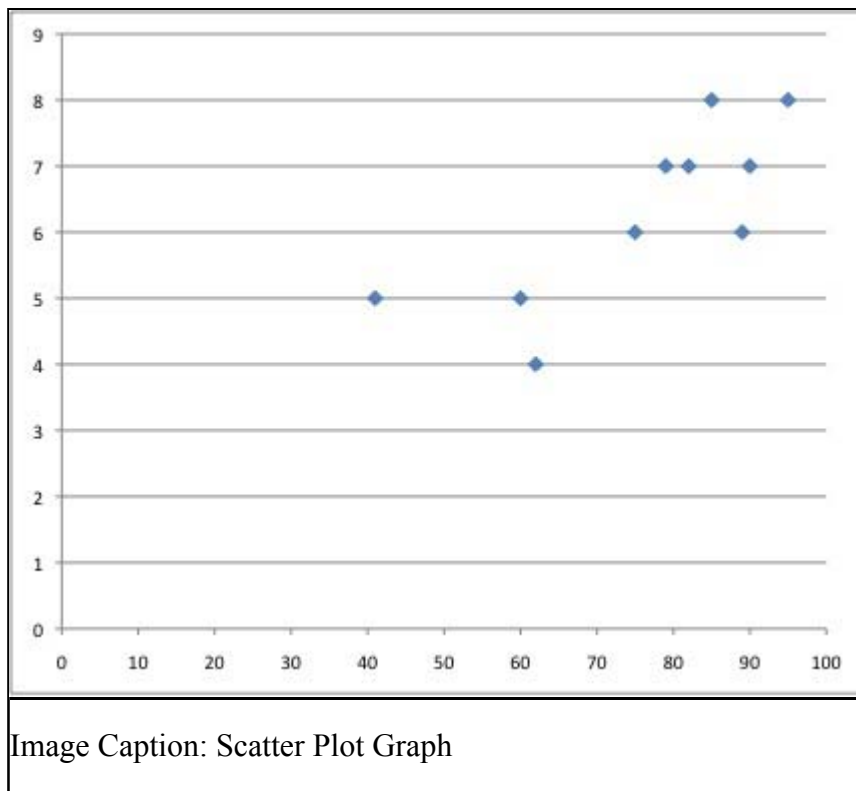
- Is the figure necessary?
- Is the figure simple, clean, and free of extraneous detail?
- Are the data plotted accurately?
- Is the grid scale correctly proportioned?
- Is the lettering large and dark enough to read? Is the lettering compatible in size with the rest of the figure?
- Are parallel figures or equally important figures prepared according to the same scale?
- Are terms spelled correctly?
- Are all abbreviations and symbols explained in a figure legend or figure caption? Are the symbols, abbreviations, and terminology in the figure consistent with those in the figure caption? In other figures? In the text?
- Are the figures numbered consecutively with Arabic numerals?
- Are all figures mentioned in the text?

As tables supplement the text, so should each figure.

#### Types of Figures

**Graphs** are good at quickly conveying relationships like comparison and distribution. The most common forms of graphs are scatter plots, line graphs, bar graphs, pictorial graphs, and pie graphs. For more details and specifics on what kind of information, relations, and meaning can be expressed with the different types of graphs, consult your textbook on quantitative analysis. Spreadsheet programs, such as Microsoft Excel, can generate the graphs for you.

**Scatter plots** are composed of individual dots that represent the value of a specific event on the scale established by the two variables plotted on the  $x$ - and  $y$ -axes. When the dots cluster together, a correlation is implied. On the other hand, when the dots are scattered randomly, no correlation is seen.



**Line graphs** depict the relationship between quantitative variables. Customarily, the independent variable is plotted along the  $x$ -axis (horizontally) and the dependent variable is plotted along the  $y$ -axis (vertically). See example Figure 1...

**Bar graphs** come in three main types: 1) solid vertical or horizontal bars, 2) multiple bar graphs, and 3) sliding bars. In solid bar graphs, the independent variable is categorical, and each bar represents one kind of datum, e. g. a bar graph of monthly expenditures. A multiple bar graph can show more complex information than a simple bar graph, e. g. monthly expenditures divided into categories (housing, food, transportation, etc.). In sliding bar graphs, the bars are divided by a horizontal line which serves as the baseline, enabling the representation of data above and below a specific reference point, e. g. high and low temperatures v. average temperature.

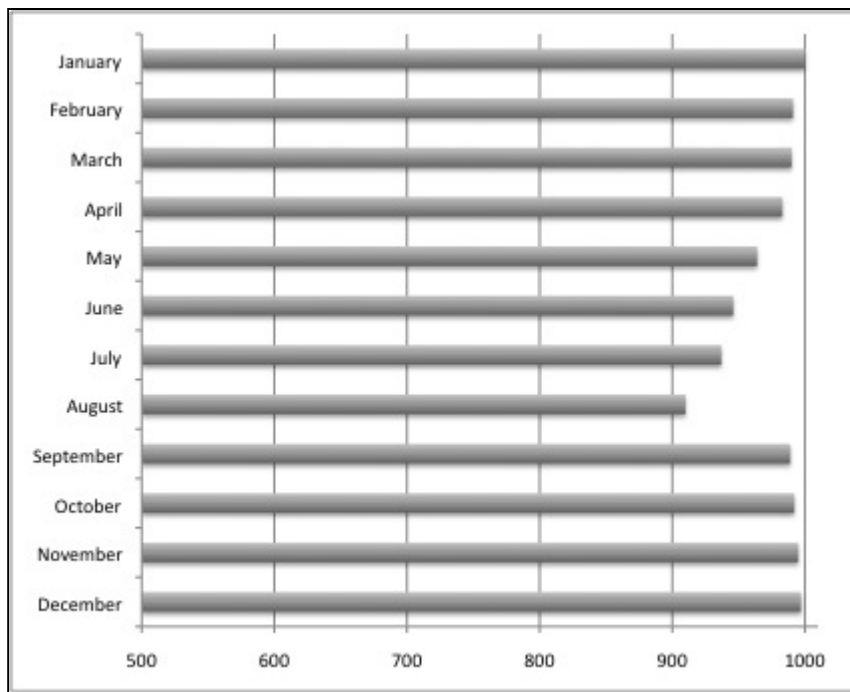


Image Caption: Bar Graph

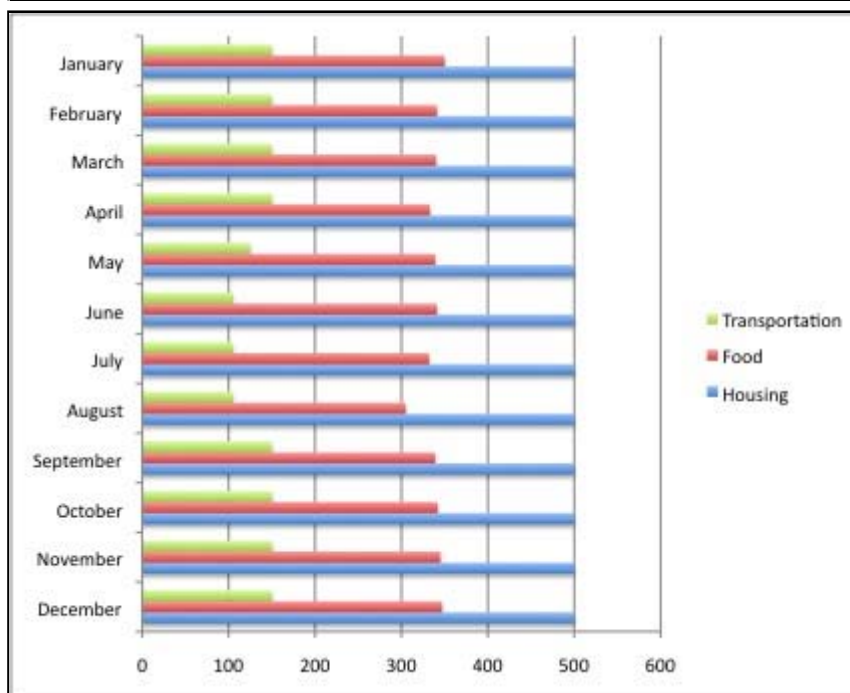
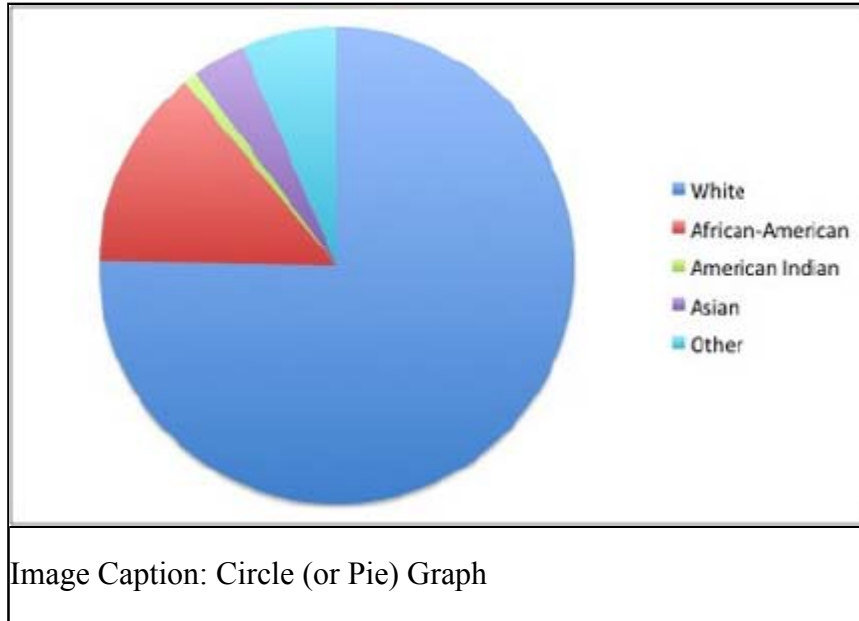


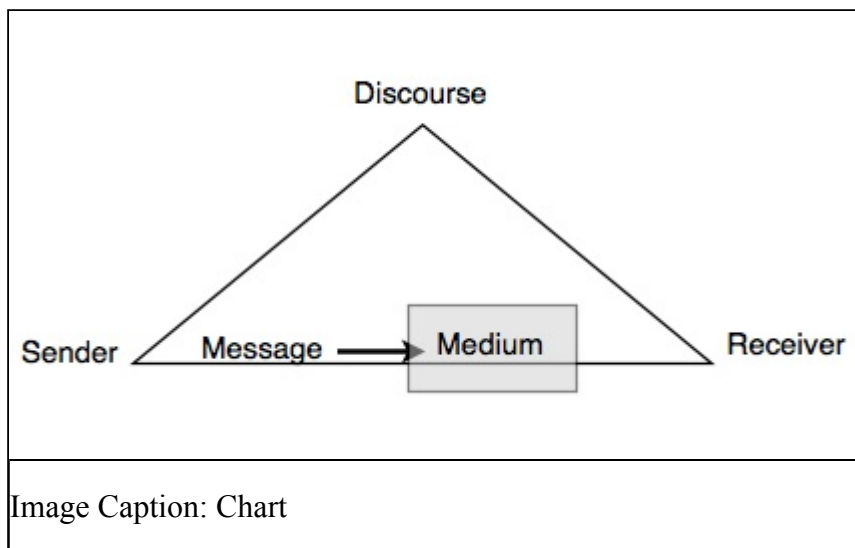
Image Caption: Bar Graph by Type

**Pictorial graphs** can be used to show quantitative differences between groups. Pictorial graphs can be very deceptive: if the height of an image is doubled, its area is quadrupled. Therefore, great care should be taken that images representing the same values must be the same size.

**Circle (pie) graphs** are used to represent percentages and proportions. For the sake of readability, no more than five variables should be compared in a single pie graph. The segments should be ordered very strictly: beginning at twelve o'clock, order them from the largest to the smallest, and shade the segments from light to dark (i. e. the smallest segment should be the darkest). Lines and dots can be used for shading in black and white documents.



**Charts** are used to represent the components of larger objects or groups (e. g. a tribal hierarchy), the steps in a process (as in a flow-chart), or the schematics of an object (the components of a cell phone).



**Drawings and photographs** can be used to communicate very specific information about a subject. Thanks to software, both are now highly manipulable. For the sake of readability and simplicity, line drawings should be used, and photographs should have the highest possible contrast between the background and focal point. Cropping, cutting out extraneous detail, can be very beneficial for a photograph. Use

software like GraphicConverter or Photoshop to convert color photographs to black and white before printing on a laser printer. Otherwise most printers will produce an image with poor contrast.



Image Caption: Photograph

### Preparing Figures

In preparing figures, communication and readability must be the ultimate criteria. Avoid the temptation to use the special effects available in most advanced software packages. While three-dimensional effects, shading, and layered text may look interesting to the author, overuse, inconsistent use, and misuse may distort the data, and distract or even annoy readers. Design properly done is inconspicuous, almost invisible, because it supports communication. Design improperly, or amateurishly, done draws the reader's attention from the data, and makes him or her question the author's credibility.

The APA has determined specifications for the size of figures and the fonts used in them. Figures of one column must be between 2 and 3.25 inches wide (5 to 8.45 cm). Two-column figures must be between 4.25 and 6.875 inches wide (10.6 to 17.5 cm). The height of figures should not exceed the top and bottom margins. The text in a figure should be in a san serif font (such as Helvetica, Ariel, or Futura). The font size must be between eight and fourteen point. Use circles and squares to distinguish curves on a line graph (at the same font size as the other labels). (See examples above.)

### Captions and Legends

For figures, make sure to include the figure number and a title with a legend and caption. These elements appear **below** the visual display. For the figure number, type *Figure X*. Then type the title of the figure in upper and lowercase letters. Follow the

title with a legend that explains the symbols in the figure and a caption that explains the figure:

*Figure 1.* How to create figures in APA style. This figure illustrates effective elements in APA style figures.

Captions serve as a brief, but complete, explanation and as a title. For example, “*Figure 4: Population*” is insufficient, whereas “*Figure 4: Population of Grand Rapids, MI by race (1980)*” is better. If the figure has a title in the image, crop it.

Graphs should always include a legend that explains the symbols, abbreviations, and terminology used in the figure. These terms must be consistent with those used in the text and in other figures. The lettering in the figure should be of the same type and size as that used in the figure.

**Contributors:** Elizabeth Angeli, Jodi Wagner, Elena Lawrick, Kristen Moore, Michael Anderson, Lars Soderlund, Allen Brizee.

**Summary:**

APA (American Psychological Association) is most commonly used to cite sources within the social sciences. This resource, revised according to the **6th edition** of the APA manual, offers examples for the general format of APA research papers, in-text citations, endnotes/footnotes, and the reference page. For more information, please consult the *Publication Manual of the American Psychological Association*, 6th edition, second printing.

## APA Abbreviations

In APA, abbreviations should be limited to instances when a) the abbreviation is standard and will not interfere with the reader’s understanding and b) if space and repetition can be greatly avoided through abbreviation.

There are a few common trends in abbreviating that you should follow when using APA, though there are always exceptions to these rules. When abbreviating a term, use the full term the first time you use it, followed immediately by the abbreviation in parentheses.

According to the American Psychological Association (APA), abbreviations are best used only when they allow for clear communication with the audience.

*Exceptions:* Standard abbreviations like units of measurement and states do not need to be written out. APA also allows abbreviations that appear as words in *Meriam-Webster’s Collegiate Dictionary* to be used without explanation (IQ, REM, AIDS, HIV).

Do not use periods or spaces in abbreviations of all capital letters, unless it is a proper name *or* refers to participants using identity-concealing labels:

MA, CD, HTML, APA

P. D. James, J. R. R. Tolkien, E. B. White *or* F.I.M., S.W.F.

*Exceptions:* Use a period when abbreviating the United States as an adjective (U.S. Marines or U.S. Senator)

Use a period if the abbreviation is Latin abbreviation or a reference abbreviation:

etc., e.g., a.m. *or* Vol. 7, p. 12, 4th ed.

Do not use periods when abbreviated measurements:

cd, ft, lb, mi, min

*Exceptions:* Use a period when abbreviated inch (in.) to avoid confusion.

Units of measurement and statistical abbreviations should only be abbreviated when accompanied by numerical values:

7 mg, 12 mi,  $M = 7.5$

measured in milligrams, several miles after the exit, the means were determined

Only certain units of time should be abbreviated.

Do not abbreviate:

day, week, month, year

Do abbreviate:

hr, min, ms, ns, s

To form the plural of abbreviations, add s alone without apostrophe or italicization.

vols., IQs, Eds.

*Exception:* Do not add s to pluralize units of measurement (12 m not 12 ms).

### **Abbreviations in Citations**

Citations should be as condensed as possible, so you should know the basic rules of abbreviation endorsed by the APA to provide your readers with reference information.

Always abbreviate the first and middle names of authors, editors, etc.

Shakespeare, W., Chomsky, N.

Use the following abbreviations within citations (take note of capitalization):

<b>APA Citation Abbreviations</b>	
<i>Book Part</i>	<i>Abbreviation</i>
edition	ed.
revised edition	Rev. ed.



Second Edition	2 <sup>nd</sup> ed.
Editor(s)	Ed. or Eds.
Translator(s)	Trans.
No date	n.d.
Page(s)	p. or pp.
Volume(s)	Vol. or Vols.
Number	No.
Part	Pt.
Technical Report	Tech. Rep.
Supplement	Suppl.

**Contributors:** Elizabeth Angeli, Jodi Wagner, Elena Lawrick, Kristen Moore, Michael Anderson, Lars Soderlund, Allen Brizee.

**Summary:**

APA (American Psychological Association) is most commonly used to cite sources within the social sciences. This resource, revised according to the **6th edition** of the APA manual, offers examples for the general format of APA research papers, in-text citations, endnotes/footnotes, and the reference page. For more information, please consult the *Publication Manual of the American Psychological Association*, 6th edition, second printing.

## Statistics in APA

When including statistics in written text, be sure to include enough information for the reader to understand the study. Although the amount of explanation and data included depends upon the study, APA Style has guidelines for the representation of statistical information:

- Do not give references for statistics unless the statistic is uncommon, used unconventionally, or is the focus of the article
- Do not give formulas for common statistics (i.e. mean, *t* test)
- Do not repeat descriptive statistics in the text if they're represented in a table or figure
- Use terms like respectively and in order when enumerating a series of statistics; this illustrates the relationship between the numbers in the series.

### Punctuating Statistics

Use parentheses to enclose statistical values:

...proved to be statistically significant ( $p = .42$ ) with all variables.

Use parentheses to enclose degrees of freedom:

$$t(45) = 4.35$$

$$F(3, 87) = 2.11$$

Use brackets to enclose limits of confidence intervals:

89% CIs [3.45, 2.7], [-6.0, 3.89], and [-7.23, 1.89]

Use standard typeface (no bolding or italicization) when writing Greek letters, subscripts that function as identifiers, and abbreviations that are not variables.

Use **boldface** for vectors and matrices:

$\mathbf{V}$ ,  $\Sigma$

Use *italics* for statistical symbols (other than vectors and matrices):

*t*, *F*, *N*

Use an *italicized*, uppercase *N* in reference to number of subjects or participants in the total sample.

$N = 328$

Use an *italicized*, lowercase *n* in reference to only a portion of the sample.

$n = 42$

**Contributors:** Elizabeth Angeli, Jodi Wagner, Elena Lawrick, Kristen Moore, Michael Anderson, Lars Soderlund, Allen Brizee.

**Summary:**

APA (American Psychological Association) is most commonly used to cite sources within the social sciences. This resource, revised according to the **6th edition** of the APA manual, offers examples for the general format of APA research papers, in-text citations, endnotes/footnotes, and the reference page. For more information, please consult the *Publication Manual of the American Psychological Association*, 6th edition, second printing.

## APA Classroom Poster

The APA poster at the link below is a printable jpg file you may download and print out at different sizes for use in classrooms, writing centers, or as a pocket reference. Please keep in mind that the file size, as a print-quality resource (120 dpi), is large, so it may take a while to download. You may adjust the print size of the poster from your print menu. As is, the poster is 27x36 inches.

Also please note that the poster only contains *basic* APA guidelines. For detailed instructions, please see the complete OWL APA resources [here](#).

The Purdue OWL APA Classroom Poster was developed by Kate Bouwens for the Purdue Professional Writing - Purdue OWL Internship class, English 490, in spring 2009.

[Purdue OWL APA Classroom Poster](#).

**Contributors:** Elizabeth Angeli, Jodi Wagner, Elena Lawrick, Kristen Moore, Michael Anderson, Lars Soderlund, Allen Brizee.

**Summary:**

APA (American Psychological Association) is most commonly used to cite sources within the social sciences. This resource, revised according to the **6th edition** of the APA manual, offers examples for the general format of APA research papers, in-text citations, endnotes/footnotes, and the reference page. For more information, please consult the *Publication Manual of the American Psychological Association*, 6th edition, second printing.

## APA Changes 6th Edition

The American Psychological Association (APA) updated its style manual in the summer of 2009. This resource presents the changes made between the fifth and sixth editions. Please note that the first printing of the APA sixth edition contained misprints; if you are using the APA manual, make sure you are using the second printing of the sixth edition.

Traditionally, psychologists were the main users of APA, but recently, students and writers in other fields began using APA style. Therefore, the sixth edition was written with a broader audience in mind. The changes made to the sixth edition reflect this broader audience.

This resource was created following the APA manual's "What's New in APA," is organized according to the APA manual chapters, and highlights updates to the sixth edition that most concern student writers instead of those interested in publishing manuscripts. For a more complete discussion of the changes, please visit [this site](#).

## Levels of Heading

Headings are used to help guide the reader through a document. The levels are organized by levels of subordination, and each section of the paper should start with the highest level of heading.

### Fifth Edition (Section 3.31 in the APA manual)

APA Headings	
Level	Format
5	CENTERED UPPERCASE HEADINGS
1	Centered Uppercase and Lowercase Headings
2	<i>Centered, Italicized, Uppercase and Lowercase Headings</i>
3	<i>Left-aligned, Italicized, Uppercase and Lowercase Side Heading</i>

4	<i>Indented, italicized, lowercase paragraph heading ending with a period.</i>
---	--

### Sixth Edition (3.03)

APA Headings	
Level	Format
1	<b>Centered, Boldface, Uppercase and Lowercase Headings</b>
2	<b>Left-aligned, Boldface, Uppercase and Lowercase Heading</b>
3	<b>Indented, boldface, lowercase heading with a period.</b>
4	<i>Indented, boldface, italicized, lowercase heading with a period.</i>
5	<i>Indented, italicized, lowercase heading with a period.</i>

For example, in a scientific report following APA style, a report contains three sections: Method, Results, and Discussion. Each of these sections start with level 1 headings:

**Methods** (Level 1)

**Site of Study** (Level 2)

**Participant Population** (Level 2)

**Teachers.** (Level 3)

**Students.** (Level 3)

**Results** (Level 1)

**Spatial Ability** (Level 2)

**Test one.** (level 3)

*Teachers with experience.* (Level 4)

*Teachers in training.* (Level 4)

**Test two.** (Level 3)

**Kinesthetic Ability** (Level 2)

## Reducing Bias in Language (3.11)

Using precise language is expected in scientific writing, and the sixth edition offers new ways in which to talk about research participants (note that “subjects” is still an acceptable term to use, but “participants” is more representative of the individuals’ roles in the research project).

**Refer to participants at the appropriate level of specificity.** The manual provides the example of using women and men to refer to all human beings instead of only using man. Man is appropriate to use when referring to one man but not when referring to a population that includes men and women.

**Refer to participants how they wish to be called.** Try to avoid labels if possible, but if this is not avoidable, be respectful. Focus on the people and not the label. For example, instead of labeling a group “the elderly” or “the arthritic,” labels in which individuals are lost, try “older adults” or “a woman with arthritis.”

**Acknowledge participants’ participation while still following the rules in your field.** For example, a cognitive psychology student might use the term “subjects” in her research report, but a nursing student might use the term “patients” to refer to those who participated in his research. Whatever term you choose to use, be sure you are consistent throughout your paper and with your field’s guidelines.

## The Mechanics of Style

**Spacing (4.01).** Use two spaces after periods instead of one. More space in between sentences allows for easier reading and comprehension.

Fifth edition: “Previous research has shown that patients are interested in palliative care. This research project explores how to discuss palliative care with patients.”

Sixth edition: “Previous research has shown that patients are interested in palliative care. This research project explores how to discuss palliative care with patients.”

**Approximations (4.31-32).** Use words to express approximations of days, months, and year.

“I started spelunking about four years ago.”

**Reporting statistics (4.35, 44, and 10).** Use a zero before the decimal point with numbers less than one when the statistic can be greater than one.

0.56kg

Do not use a zero before the decimal point when the number cannot be greater than one.

$r = .015$

Include effect sizes and confidence intervals with statistics. This will allow the reader

to more fully understand the conducted analyses.

Use brackets to group together confidence interval limits in both the body text and tables (5.15).

“95% CIs [-7.2, 4.3], [9.2, 12.4], and [-1.2, -0.5]” (p. 94)

## Displaying Results

The sixth edition includes a section (5.01) on the purpose of displaying data. This section can help you decide when and how to display your data. For example, your data might show that you are exploring data and information, or your data may serve a storage purpose for later retrieval.

More than likely, though, your data will serve either a communication purpose to show you have discovered meaning in data and you want to show/communicate to others this meaning.

**Figures.** Figures include graphs, charts, maps, drawings, and photographs. As a general rule, only include figures when they add to the value of the paper. If the figure merely repeats what is written in the paper, do not include it, as it does not add any new information to the paper.

The sixth edition also emphasizes the importance of clearly labeling electrophysiological, radiological, and genetic data.

## References

### Direct Quotations (6.01-21)

The sixth edition provides explicit rules for direct quotations and states that you must credit the source what “paraphrasing, quoting an author directly, or describing an idea that influenced your work” (p. 170).

If the quotation is less than 40 words, incorporate the quotation into the text and place quotation marks round the quotation. Cite the source immediately after the quotation and continue with the sentence.

Porter (1998) states, “The internetworked classroom has the potential (not yet realized) to empower students” (p. 5), and this research project examines this potential.

If the quotation you are using falls at the end of the sentence, enclose the quotation with quotation marks without including the quotation’s original punctuation. Here’s a sentence as it appears in the original text:

“Semantic frames/domains represent one of the two major organizing principles for conceptual structure” (Croft & Cruse, 2004, p. 32).

Here’s what the sentence looks like when quoted within a text:

In arguing for frame semantics, Croft and Cruse (2004) assert, “Semantic frames/domains represent one of the two major organizing principles for conceptual structure” (p. 32).

If the quotation has more than 40 words, use a block quotation. Begin the quotation on a new line and indent a half-inch from the left margin. Double-space the entire quotation, and at the end of the quotation, provide citation information after the final punctuation mark.

John Nicholson (1820) anticipated this effect when discussing farming methods in the nineteenth century:

Perhaps it would be well, if some institution were devised, and supported at the expense of the State, which would be so organized as would tend most effectually to produce a due degree of emulation among Farmers, by rewards and honorary distinctions conferred by those who, by their successful experimental efforts and improvements, should render themselves duly entitled to them. (p. 92)

## The Reference List

References that appear in the text must appear in the references list in alphabetical order by the author’s last name, with the exception of personal communication; only cite personal communication in the text, not in the reference list.

**Electronic sources (6.31).** Because electronic publishing has become a standard in research, the sixth edition provides an overview of electronic sources and how to reference them, specifically with URLs and DOIs.

URLs, more commonly known as a web address, locate information housed on the Internet. The fifth edition specified that references to electronic sources should refer to the article’s or document’s URL. However, they are prone to “breaking” or deleting, and to resolve issues associated with the unstable nature of URLs, publishers have started using DOIs with articles.

For more details on how to cite electronic sources with following the sixth edition, consult your APA manual or [the OWL’s resource on citing electronic sources](#).

While citing from a webpage, you may not be able to find a page number to refer to, i.e., there is no pagination. Instead, refer to the paragraph number from which you are citing where you would usually insert a page number by using “para.” instead of “p.”. Be sure to include the author’s/s’ name/s and year, too, if applicable.

“The Purdue University Writing Lab and Purdue Online Writing Lab (OWL) assist clients in their development as writers—no matter what their skill level—with on-campus consultations, online participation, and community engagement” (Purdue OWL, 2010, “Mission,” para. 1).

“Mission” is used here to refer to the section in which this quote was found.

---

Copyright ©1995-2010 by [The Writing Lab](#) & [The OWL at Purdue](#) and [Purdue University](#). All rights reserved. This material may not be published, reproduced, broadcast, rewritten, or redistributed without permission. Use of this site constitutes acceptance of [our terms and conditions of fair use](#). Please [report any technical problems](#) you encounter.