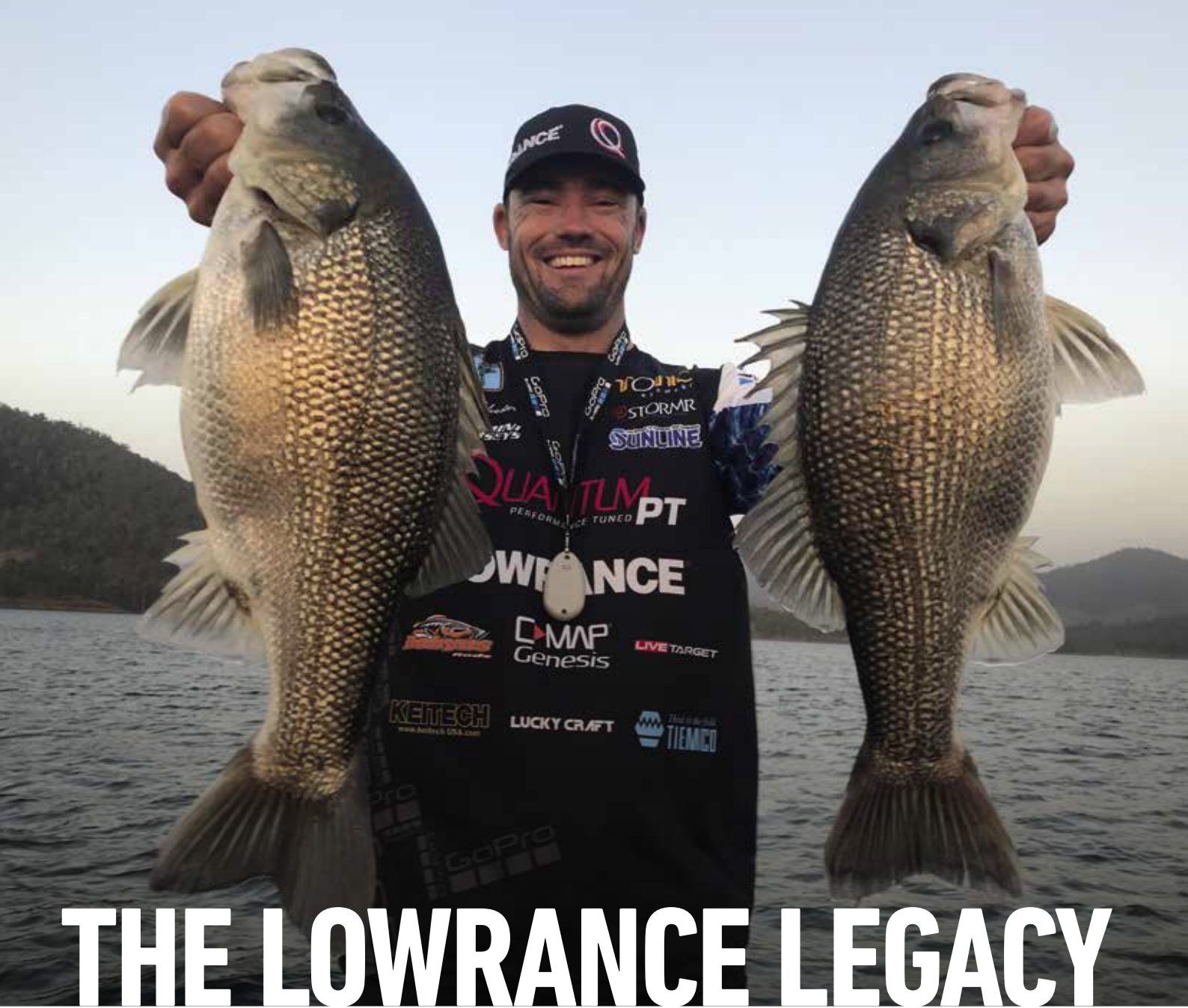


LOWRANCE®



MARINE ELECTRONICS FOR 2019



THE LOWRANCE LEGACY

Lowrance took the lead in marine electronics when it invented the first consumer fishfinder in 1957.

Our legacy as the top brand in marine electronics has been sustained by more than 60 years of innovation, reliability and quality, all driven by a never-ending quest to help anglers find more fish.

From the world's first consumer fishfinder—the FISH LO-K-TOR—to the world's best fishfinder—HDS LIVE—Lowrance fishfinders have been used by more anglers than any other brand in history.

Thank you for taking time to learn more about our products. Lowrance products are easy to use, feature the brightest and clearest displays, and the best fishfinding sonar on the planet.

Whether you fish dams, estuaries or coastal, Lowrance fishfinder/chartplotters will make it easier for you to find more fish, so you can make the most of your time on the water. You will find more fish with Lowrance. That's a fact.

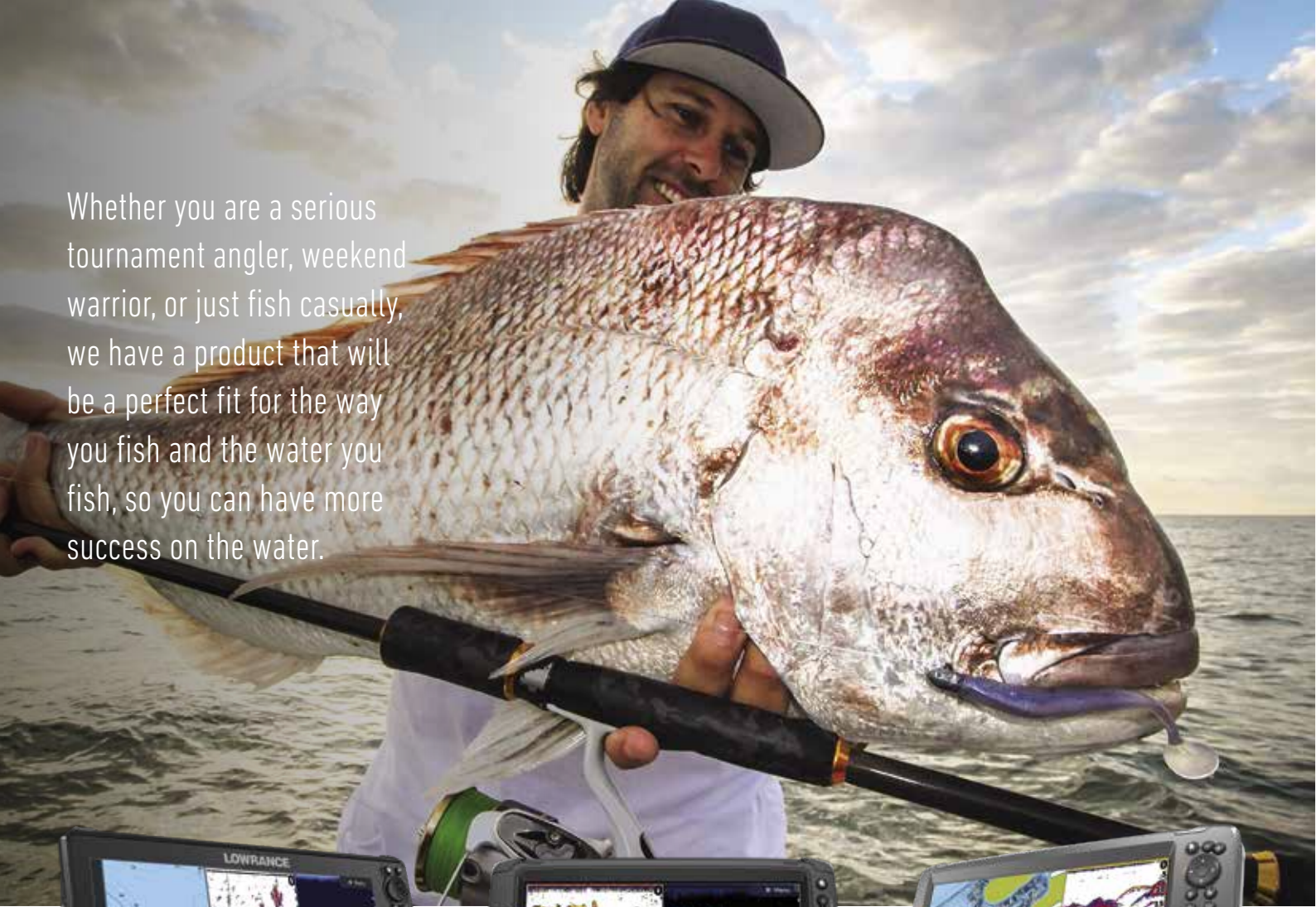
LOWRANCE®

A person is fishing from a boat at sunset. The person is silhouetted against the bright orange and yellow sky. They are holding a fishing rod that extends across the frame. The water is dark with some ripples. The boat's edge is visible in the bottom right corner.

Table of Contents

04	Networking
06	Sonar Technology
10	Connectivity
12	HDS LIVE
14	Elite Ti ²
16	HOOK ²
18	Castables
20	Cartography
22	Mapping Upgrades
24	Navigation
26	Networking
28	Part Number List

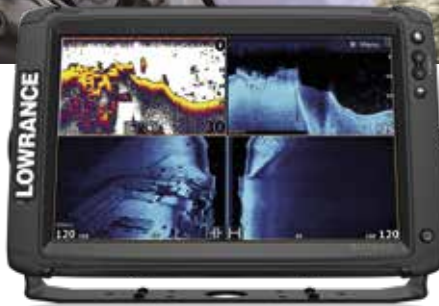
Whether you are a serious tournament angler, weekend warrior, or just fish casually, we have a product that will be a perfect fit for the way you fish and the water you fish, so you can have more success on the water.



HDSLIVE

The world's best fishfinder

HDS LIVE builds on the Lowrance® legacy as the leader in marine electronics with innovative features like built-in support for Active Imaging™, FishReveal™, StructureScan® 3D with Active Imaging and LiveSight™ real-time forward or down sonar – plus LiveCast™ smartphone integration and the best suite of navigation tools ever included in an HDS display.



ELITE Ti²

The world's best value

Lowrance® Elite Ti² displays offer popular premium features — like an easy-to-use touchscreen, Active Imaging™, FishReveal™, wireless networking, built-in Genesis Live real-time map creation, wireless connectivity and smartphone notifications — all at a more affordable price than other fishfinder/chartplotters in its category.



HOOK²

The world's easiest fishfinder

Spend more time fishing and less time making adjustments with HOOK², featuring a perfect mix of simplicity and powerful fishfinding sonar, including Autotuning sonar, wide-angle Lowrance High CHIRP coverage, and SideScan and DownScan Imaging™

A FISHFINDER FOR EVERY ANGLER

Capabilities

	HDS LIVE	Elite-Ti ²	HOOK ²
SolarMAX™ HD Display	Yes	No	No
SolarMAX Display	No	Yes	Yes
Touchscreen	Yes	Yes	No
Multi-touch	Yes	No	No
High-Performance Processor	Yes	No	No
CHIRP	Yes	Yes	*
DownScan Imaging™	Yes	Yes	**
SideScan	Yes	Yes	***
Active Imaging 3-in-1	Yes	Yes	No
Active Imaging™ Down	Yes	Yes	No
Active Imaging Side	Yes	Yes	No
StructureScan® 3D with Active Imaging	Yes	No	No
LiveSight™ Real-Time Sonar	Yes	No	No
LiveCast™ Smartphone integration (HDS 16/12)	Yes	No	No
C-MAP® Genesis Live****	Yes	Yes	No
Automatic Routing#	Yes	Yes	No
Smartphone notifications	Yes	Yes	No
Wireless networking	No	Yes	No
Live network sonar	Yes	No	No
Dual Channel CHIRP	Yes	No	No
Internal GPS antenna (excludes sonar only displays)	Yes	Yes	*
Wireless connectivity	Yes	Yes	No
NMEA 2000®	Yes	Yes	No
NMEA 0183	Yes	Yes	No
Engine Integration	Yes	Yes	No
SmartSteer MotorGuide® Xi5 trolling motor control	Yes	Yes	No
SmartSteer™ outboard pilot	Yes	No	No
Radar	Yes	No	No
SonicHub® 2	Yes	Yes	No
Ethernet	Yes	No	No
Video input	Yes	No	No

*Excludes SplitShot GPS Plotters/4x Bullet

**Excludes 4x Bullet

***TripleShot displays only

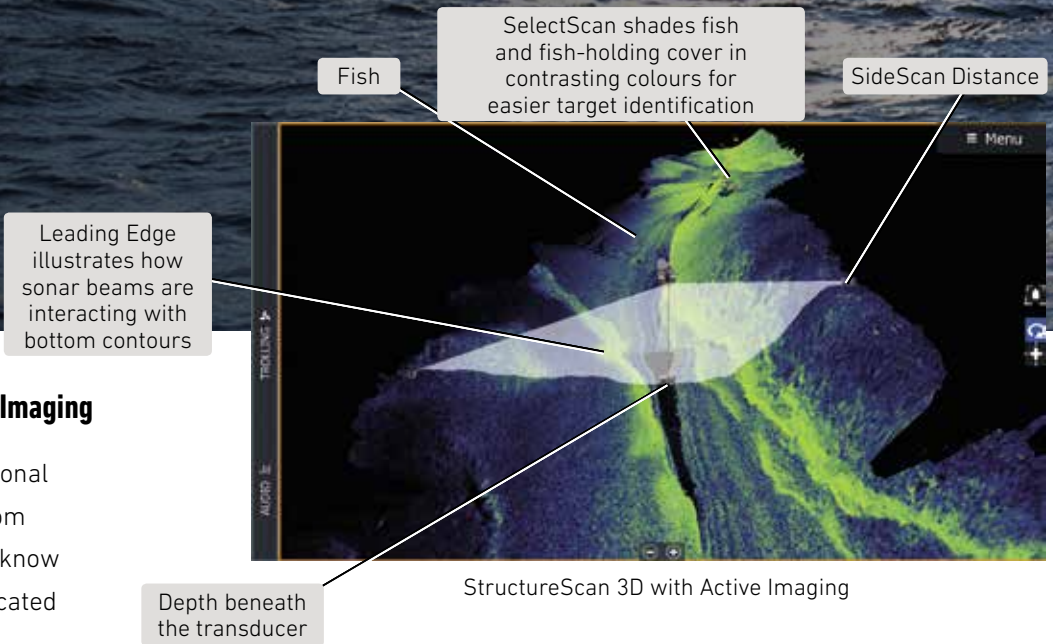
**** C-MAP® chart required

#Subscription may be required

SONAR TECHNOLOGY

For more than six decades, Lowrance has pushed the limits of technology to deliver innovations like the first consumer fishfinder, the first colour fishfinder, the first sonar/GPS combo, the first digital sonar, grayline/colourline and much more.

For 2019, Lowrance has released a suite of new sonar technology and navigation tools that takes its fishfinding/chartplotting capability to a new level.

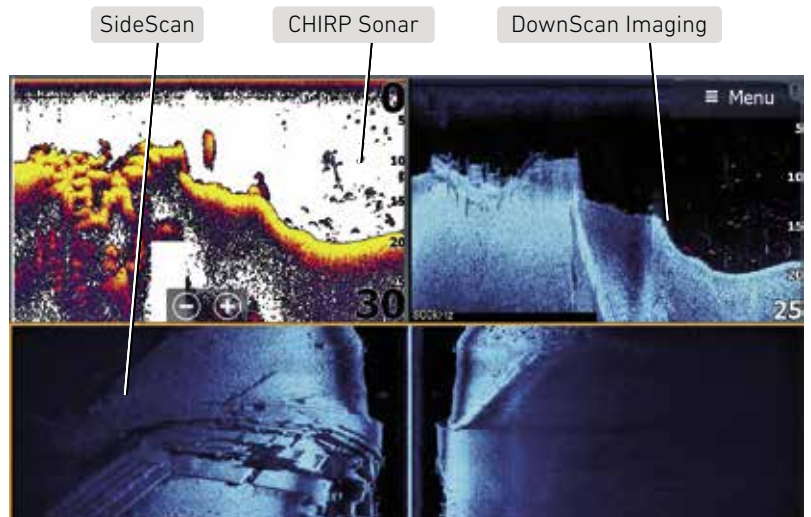


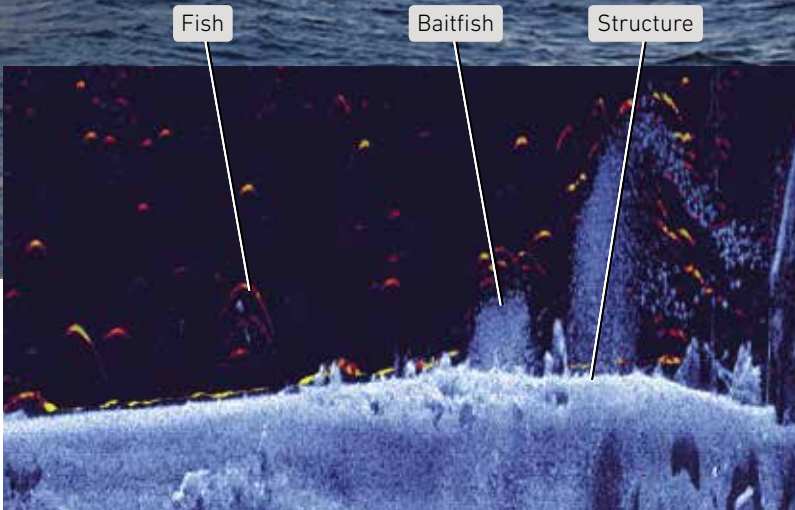
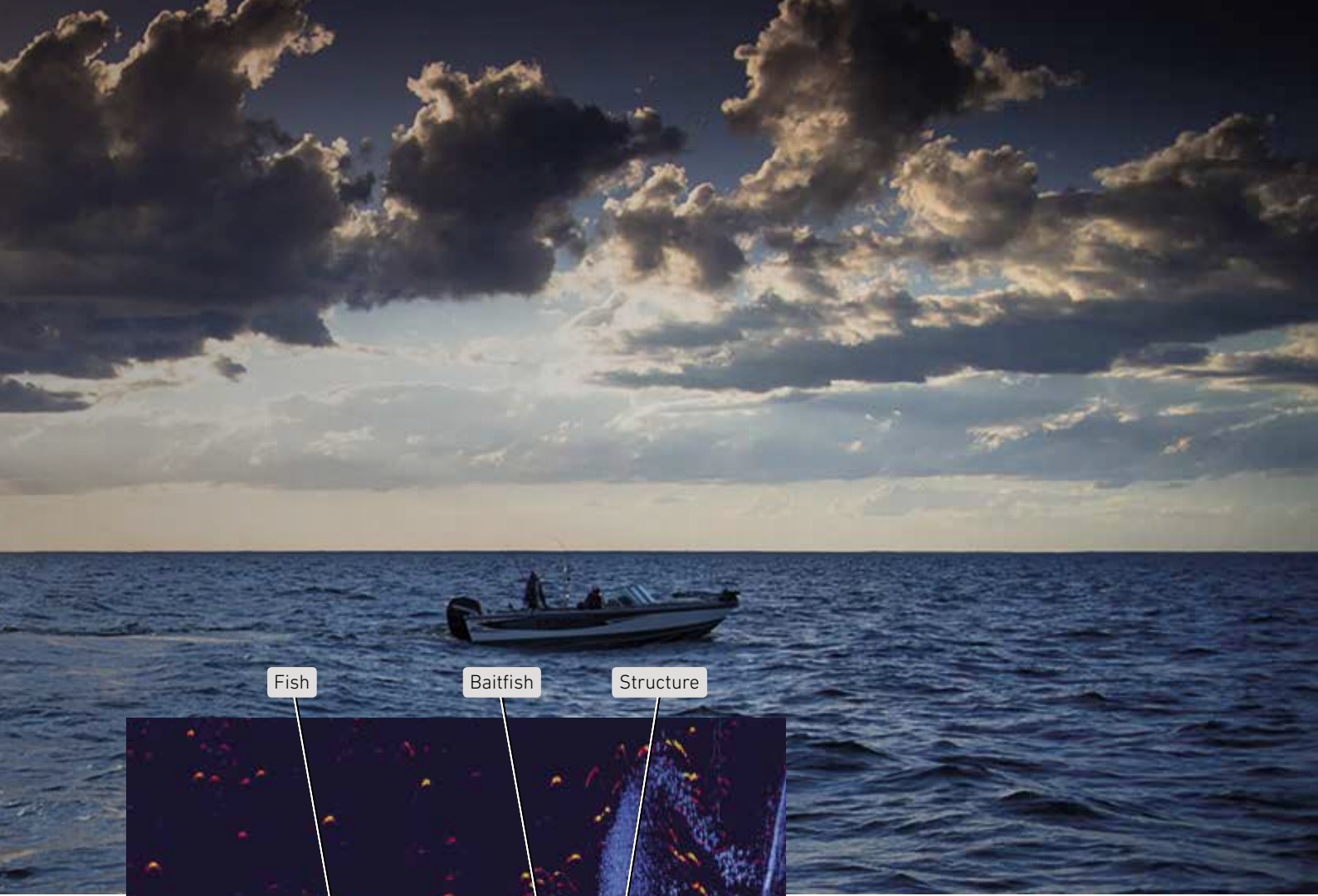
StructureScan® 3D with Active Imaging

Get a real-world, three-dimensional view of fish, structure and bottom contour that makes it easier to know where fish and structure are located in relation to your boat with the StructureScan 3D transducer with SideScan and DownScan Imaging™.

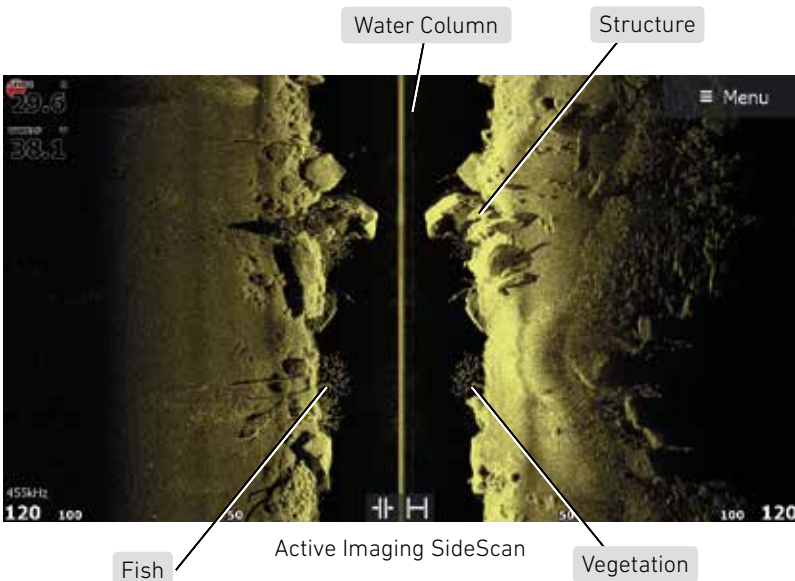
Active Imaging™ 3-in-1 sonar

Perfect for pinpointing fish-holding areas like rockpiles, weedbeds, ditches and drop-offs, Active Imaging™ 3-in-1 with Lowrance CHIRP, SideScan and DownScan Imaging™ delivers superior clarity, the best target separation and the highest resolution images of fish and structure at a longer range than any other structure imaging technology.





Active Imaging DownScan with FishReveal



Active Imaging SideScan

FishReveal™ Smart Target View

Get the best of CHIRP sonar and DownScan Imaging™ on one screen with the exclusive FishReveal™ Smart Target view that helps you easily recognize fish from structure and cover on high-detailed DownScan images. FishReveal makes fish identification easy and removes the need to display CHIRP sonar and DownScan Imaging in a two-panel split-screen display. FishReveal is compatible with HDS LIVE and Elite Ti² displays.



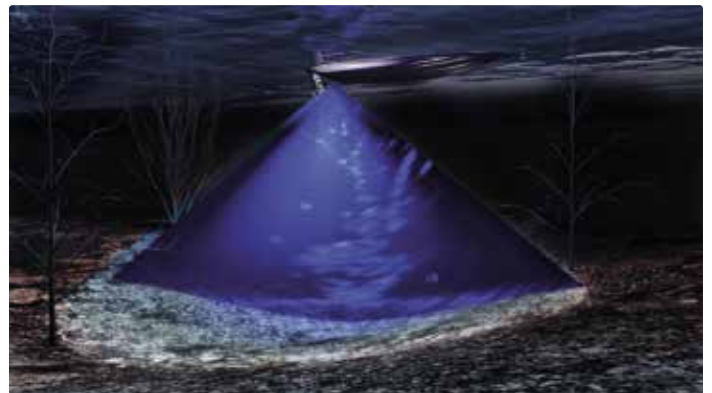
LiveSight™— fishing in real time*

You've never fished like this before. Sonar interpretation made simple, LiveSight™ sonar turns all fishing into sight fishing, delivering the most detailed views of fish, down to every turn and flip of the tail, as they swim in and around cover. You'll be fishing in real-time as you watch fish react to your lure, see how they are relating to structure and gain insight on what's working, what's not and what to do next.

Perfect for drop shotting and vertical jigging, or tracking bait in front of your boat, LiveSight lets you get a bead on the fish, so you'll know whether they are actively feeding. Mount the transducer in a front-facing position to cast toward the fish, or mount it in a down-facing position to do some vertical jigging below your boat.

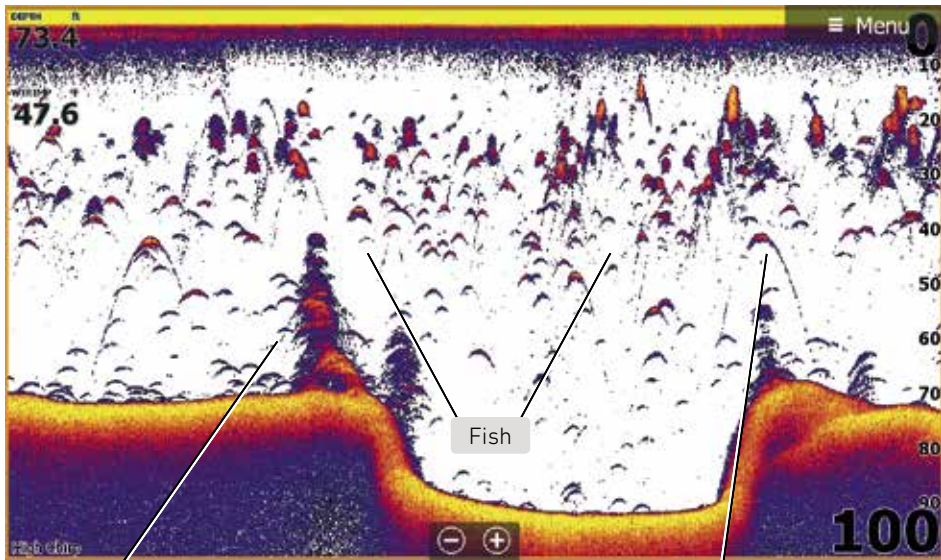


LiveSight Forward



LiveSight Down

*Coming early 2019



Structure

Colourline™ illustrates target hardness — the lighter the colour, the harder the target

CHIRP and Broadband Sonar™

See fish, structure and the bottom with greater clarity—right out of the box—with Lowrance CHIRP and Broadband Sounder sonar featuring exclusive Advanced Signal Processing (ASP™). CHIRP and Broadband feature unparalleled target separation and screen clarity to give anglers the best view of individual fish targets, even when fish targets are close to the bottom or suspended in tight schools.

CONNECTIVITY



LiveCast video stream

Stream video from your smartphone to HDS LIVE 16 and 12-inch models with an HDMI cable.

LiveCast™ — Smartphone integration

You no longer have to choose between watching the big game and spending a day on the water with LiveCast smartphone integration. Watch video, view Google maps and fishing data on the high-resolution screen of your HDS LIVE display via the HDMI connection on HDS LIVE 16- and 12-inch models. View data from your smartphone and keep your eye on the fish with a LiveCast-sonar split screen.

Smartphone notifications

Keep your eyes on the fish and never miss an important text or call with built-in smartphone notifications. Turn off phone notifications for uninterrupted fishing, or leave them on to receive popup notifications on the screen of your HDS LIVE or Elite Ti² display.



A popup will appear on the screen of HDS LIVE and Elite Ti² displays when you receive a call or text message.



LOWRANCE

HDS LIVE

BEST FISHFINDING SYSTEM ON THE PLANET

NEW ACTIVE IMAGING



Whether you are a tournament fisherman, seasoned pro or weekend warrior—any angler that is serious about catching fish in freshwater or saltwater—we have your fishfinder. It's HDS LIVE.

It's no secret that HDS displays have been the choice of fishing pros for years, so we didn't have to go back to the drawing board to create HDS LIVE; we just made the best fishfinder/chartplotter in the world even better.

HDS LIVE features high-detail Active Imaging™ and LiveSight™ real-time sonar, plus new features like LiveCast™ and smartphone notifications, in addition to the best suite of navigation tools ever built into an HDS display.



Key features

- Sleek, low-profile design
- SolarMAX™ HD Screen Technology
- Built-in Low, Medium and High CHIRP
- Integrated support for New Active Imaging™ and StructureScan® 3D with Active Imaging
- LiveSight™ real-time sonar compatible*
- FishReveal™ Smart Target View
- New C-MAP® Genesis Live mapping
- Preloaded C-MAP AU/NZ Enhanced mapping
- Smartphone notifications
- LiveCast™ smartphone integration (HDS LIVE 16/12 only)
- HALO24 Radar ready
- Broadband Radar™ compatible
- C-MAP® Easy Routing + Navionics® Autorouting capability**
- Six-panel splitscreen (HDS LIVE 16/12 only)
- Touchscreen control of trolling motor and outboard pilot
- SonicHub®2
- Mercury VesselView Link ready

*Coming soon - early 2019

**Subscription may be required



View all of your structure imaging side-by-side—on the screen at the same time—for the first time.

ELITE Ti²

BEST FISHFINDING VALUE



ELITE Ti²



FishReveal makes it easier to see fish by separating the fish from structure.

Premium Features at an Affordable Price.

Offering popular premium features at a more affordable price than any display in its category, Elite Ti² give anglers a level of powerful fishfinding and navigation functionality usually reserved for more expensive fishfinder/chartplotters.

Add Elite Ti² to your rig and enjoy premium features that not only make Elite Ti² easy to use, but make it easier

for you to have more success on the water — from Active Imaging™, C-MAP Genesis Live onscreen map creation, and preloaded C-MAP AU/NZ Inland mapping to wireless networking and smartphone notifications.

Key features

- Easy-to-use touchscreen
- Active Imaging™ support
- FishReveal™ Smart Target View
- Wireless networking
- Smartphone Notifications
- Preloaded C-MAP AU/NZ mapping
- C-MAP® Easy Routing + Navionics® Autorouting capability*
- C-MAP Genesis Live
- Touchscreen control of MotorGuide® Xi5 trolling motors
- Engine integration
- Wireless connectivity

*Subscription may be required

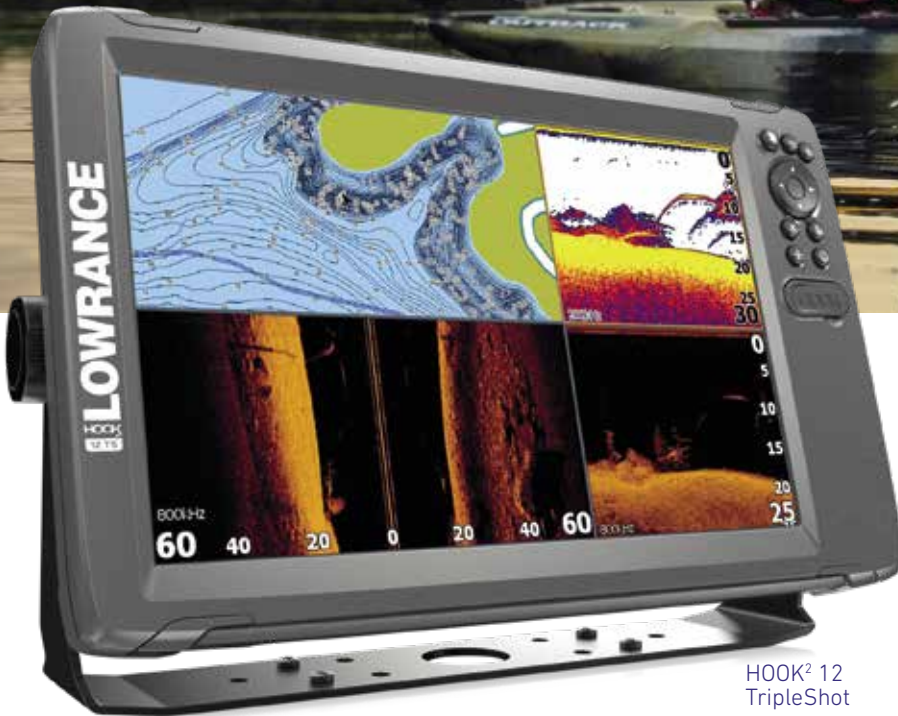
With Active Imaging 3-in-1 sonar, you will drill fewer holes in your boat and get all of your sonar — CHIRP, SideScan and DownScan Imaging™ — from a single transducer install.





HOOK²

THE WORLD'S EASIEST FISHFINDER



HOOK² 12
TripleShot



HOOK² 7x
TripleShot

You will be free to focus on fishing with HOOK².

HOOK² offers a hassle-free fishing experience with an easy menu layout, direct-access keypad and the Lowrance fishfinding performance anglers have counted on for decades.

What makes HOOK² different is its core feature, Autotuning sonar, which delivers the best sonar image every time by automatically adjusting sonar settings as fishing conditions change.

HOOK² is ready to fish right out of the box. Just install it on your rig and go.

Its ease of use is rivaled only by its reliability on the water. You will see more fish in the water column and cover more water in less time with HOOK², which offers models with High CHIRP, Broadband sonar, SideScan and DownScan Imaging options.

Key features

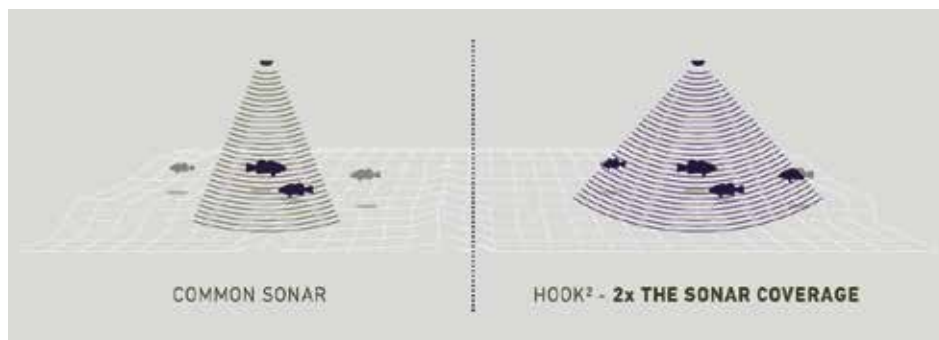
- Autotuning sonar
- Wide-angle sonar
- Models offering Broadband Sounder™, High CHIRP, plus SideScan and DownScan Imaging™
- Preloaded C-MAP AU/NZ mapping



THERE'S A HOOK² DESIGNED FOR YOU

MODEL	HOOK ² 4X	HOOK ² 4X GPS	HOOK ² 5X GPS	HOOK ² 7X GPS	HOOK ² 7X GPS	HOOK ² 5 COMBO	HOOK ² 7 COMBO	HOOK ² 9 COMBO	HOOK ² 5 COMBO	HOOK ² 7 COMBO	HOOK ² 9 COMBO	HOOK ² 12 COMBO
TRANSDUCER	BULLET	BULLET	SPLITSHOT	SPLITSHOT	TRIPLESHOT	SPLITSHOT	SPLITSHOT	SPLITSHOT	TRIPLESHOT	TRIPLESHOT	TRIPLESHOT	TRIPLESHOT
SINGLE FREQUENCY												
GPS PLOTTER		GPS	GPS	GPS	GPS							
CHIRP												
DOWNSCAN IMAGING												
SIDESCAN IMAGING												
GPS MAPPING												

Select a HOOK² for the way you fish from combos featuring TripleShot 3-in-1, SplitShot 2-in-1 and Bullet sonar with chartplotter or basic GPS plotter navigation capability.



HOOK² wide-angle sonar delivers double the sonar coverage of other fishfinders.

CASTABLES

FISH  HUNTER



FishHunter Pro

The days of having to own a boat to use fishfinding sonar are over. Take FishHunter Pro anywhere you fish—dock, bank, wharf or rocks—and you will always know where to cast.

- No internet or cellular connection required
- Reliable WiFi connection with range up to 160 ft. (55m)
- View sonar returns on your smartphone
- Tri-frequency transducer with 381kHz, 475kHz and 675kHz frequencies
- Create custom colour contour maps
- Requires free FishHunter App (available on iOS and Android)



FishHunter 3D

You don't have to own a boat to reap the benefits of fishfinding sonar. Whether you fish from a dock, the bank, the wharf or from the rocks, take FishHunter 3D and you will always know where to cast.

- No internet or cellular connection required
- Reliable WiFi connection with range up to 200 ft. (65m)
- View sonar returns on your smartphone
- Includes 5 tri-frequency transducers with 381kHz, 475kHz and 675kHz frequencies
- 3D fishing, Directional Casting and Ice fishing views
- Create custom colour contour maps and structure maps
- Requires free FishHunter App (available on iOS and Android)



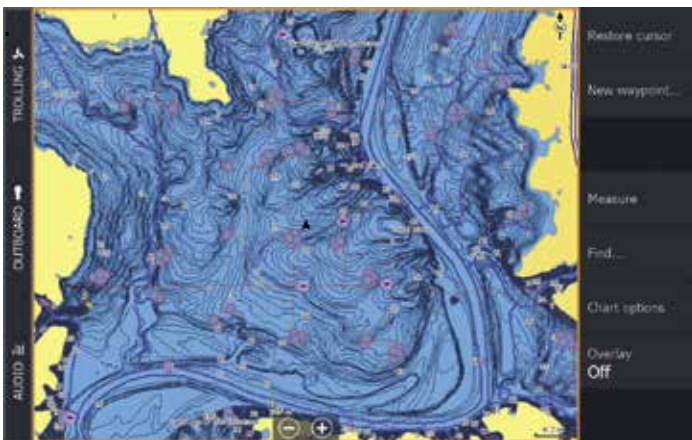


LOWRANCE
FISH HUNTER ED

CARTOGRAPHY



Recent upgrades to C-MAP charts make targeting key fishing areas easier than ever. From the high-detail C-MAP Australia and New Zealand mapping preloaded in Lowrance displays, to C-MAP Genesis Live, you'll find fishholding structure like drop-offs, shoals and points with ease.



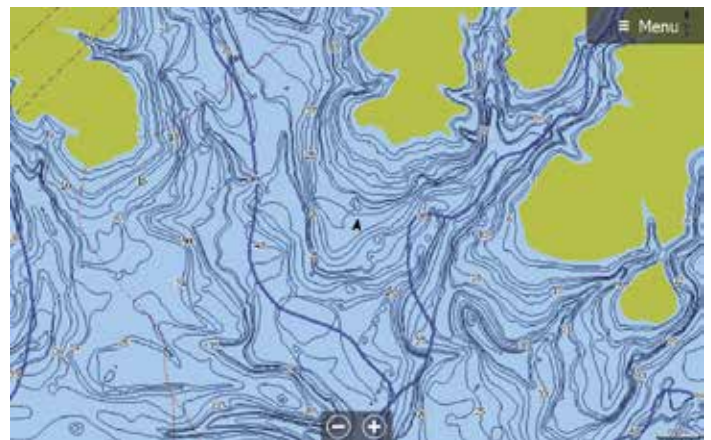
C-MAP AU/NZ

C-MAP AU/NZ Enhanced Charts for HDS Live

Whether you are fishing at your local estuary, out on the coast or the deep blue, C-MAP Enhanced charts has you covered with complete C-MAP charts and high resolution bathymetric data boaters have relied on for years.

Key features

- Complete C-MAP vector charts for Australia and New Zealand
- Offshore high resolution bathymetric data to help identify peaks, drop-offs and canyons
- Custom Depth Shading to help identify areas of interest



C-MAP AU/NZ Enhanced Charts for Hook2 and Elite Ti²

To help you get out on the water as quickly as possible we've also preloaded charts from C-MAP to help you get on the water quicker.

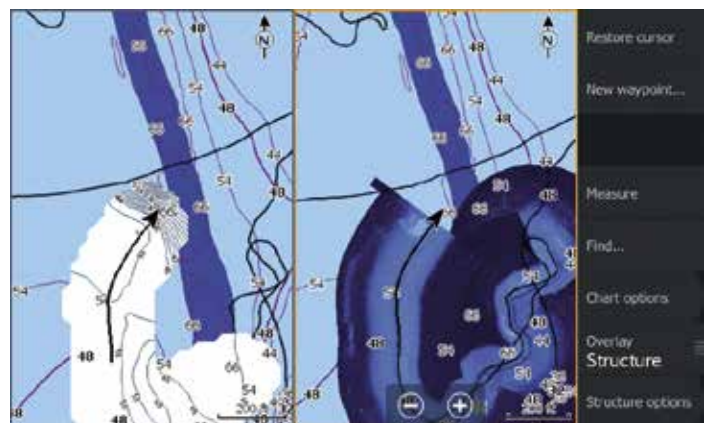
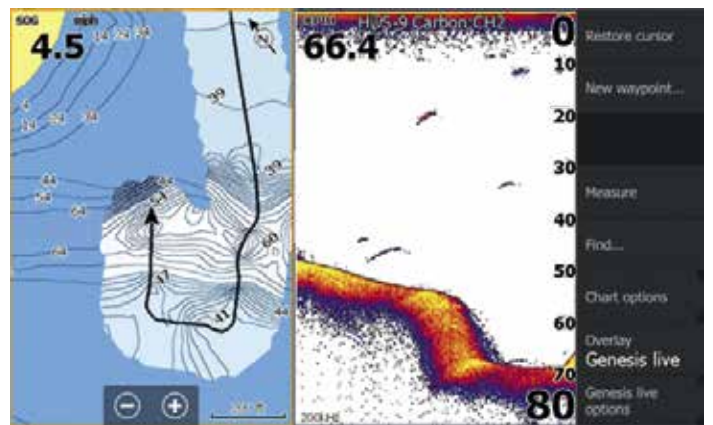
Key features

- Complete C-MAP Vector Charts including contours, NavAids, Wrecks and more
- Detailed Marina/Port Plans across Australasia
- Coastal contours and Tides



C-MAP Genesis Live — mapping in real time

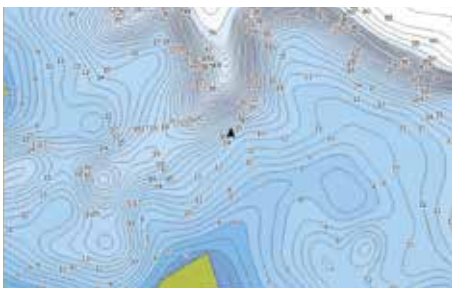
Update the mapping of your favourite fishing spot or map uncharted areas with ½ foot contours — in real time — on the screen of your fishfinder/chartplotter with C-MAP Genesis Live. Target key fishing areas with Genesis Live maps, which make it easy to find areas where fish like to hide, like drop-offs, reefs, points and more.



Set up a Genesis Live + StructureMap™ splitscreen and get a side-by-side view of depth contour and StructureMap mapping in real time.

MAPPING UPGRADES

Lowrance fishfinder/chartplotters are compatible with a multitude of chart upgrade options to suit your mapping preferences including C-MAP, Navionics, CMOR, Trax and more.



C-MAP Genesis

C-MAP Genesis empowers you to create high-definition custom fishing maps with amazing detail and one-foot contours that show key fish-holding areas for greater success on the water. Take advantage of the free online social map created by other users and download your favourite waterbodies. Better maps equal better fishing. Find out more at genesismaps.com



Benefits of C-MAP Genesis™

- Improve the mapping on your favourite waterbodies by submitting your sonar logs to the Genesis Social Map.
- View and download unlimited Social Maps for free.
- Contour lines spaced as closely as 1 foot are overlaid upon blue-shaded depth shading
- Custom Depth Shading



Genesis™ Edge features

- Unlimited viewing and downloads of personal trips
- Bottom Hardness Layer
- Vegetation Layer
- Option to merge maps with Social Map or keep them Private



C-MAP MAX-N+

C-MAP MAX-N+ coastal charts provide accurate, up-to-date information, unique features and specialized content to enhance every boating adventure.

- High-Res Coastal Contours (HRB) on coastal areas
- Dynamic Tides & Currents
- Satellite Imagery
- Shaded Relief
- High-Resolution Aerial Photos with Harbor and Approach Details for enhanced situational awareness
- Marina Info/Port Services helps traveling boaters enjoy sailing worldwide
- Custom Depth Shading
- Local and Wide coverage areas



Navionics®

Navionics charts offer optional high-definition layers, including 3D, Satellite Overlay, Panoramic Port Pictures, Dynamic Tides & Current, SonarChart™ Live and much more.

SonarChart™ Live from Navionics

SonarChart™ Live allows you to create personal 1 ft/.5 m HD Bathymetry maps that display in real time while navigating. The feature can be enabled by connecting wirelessly to sonar from a mobile device that has a Navionics boating app installed, or it can be displayed directly on the screen of compatible Lowrance® displays.

*Subscription may be required.

NAVIGATION

Navigating with Lowrance has never been safer or easier — from new, revolutionary HALO24 Radar and new Link-6S and Link-9 VHF Radios to the Precision-9 compass and SmartSteer™ control of the Lowrance® Outboard Pilot and MotorGuide® Xi5 trolling motors — you will have more control and greater situational awareness than ever.



HALO24 Radar

HALO24 revolutionizes radar by offering an almost real-time view, with industry-first 60 RPM operation at close range for the ultimate in collision avoidance. Identify hazards in an instant with VelocityTrack™ Doppler technology, and enjoy simultaneous short and long-range coverage—up to 48 nautical miles—from one compact 24-inch dome antenna.

- 48 nm range from a compact 24-inch dome
- Advanced pulse compression technology with beam sharpening

- Simultaneous Dual Range operation sees both near and far
- Ultra-fast 60 RPM operation at ranges up to 1.5 nm
- VelocityTrack™ Doppler technology for collision avoidance
- Easy operation with harbour, offshore, weather, and bird modes
- MARPA target tracking (up to 10 targets, 20 in dual range)
- Ready instantly from standby



Broadband 4G Radar

- Up to 36nm range
- Instant On™: Solid-state technology produces an immediate, accurate on-screen image, without the lengthy warm-up delay of magnetron pulse radars.
- Beam sharpening

- Advanced Surface Clutter Rejection
- MARPA Target Tracking: Track up to 10 targets. Requires a heading sensor.
- Safe: Extremely Low Emissions. Emits less radiation than a mobile phone so it can be mounted anywhere.



Broadband 3G Radar

- Up to 24nm range
- Instant On™: Solid-state technology produces an immediate, accurate on-screen image, without the lengthy

warm-up delay of magnetron pulse radars.



Link-9

The Link-9 features an integrated GPS receiver, a removable fist mic, NMEA 2000® connectivity, a built-in dual channel AIS receiver with AIS plot functionality, dual watch, tri-watch, all-scan, more intuitive user interface, a larger LCD and a new industrial design.



Link-6S

Communicate clearly with this dependable Class D DSC Approved marine VHF radio featuring an integrated GPS antenna, a four-button fist microphone, intuitive rotary and keypad controls and a new front-mountable mechanical design for easy installation.



Point-1 GPS

Integrated electronic compass provides 10Hz GPS position updates plus compass heading for chart stabilization and radar overlay, plus accurate vessel heading, even at low speeds.



Precision-9

The Precision-9 Compass measures motion on nine separate axes to supply the most accurate heading and rate-of-turn information possible for Lowrance autopilot, radar and navigation systems.



NAIS 500

Reduce your risk of collision with this latest generation, fully-integrated, Class-B AIS transponder — essential for navigating today's busy shipping lanes and congested ports.

NETWORKING



With Lowrance networking solutions, you can download C-MAP Genesis maps, map purchases and software updates directly to HDS LIVE and Elite Ti² displays. Share information across units and even control your HDS LIVE or Elite Ti² display from a smartphone/tablet.

SonicHub[®]2 Marine Audio Server



The Lowrance[®] SonicHub2 features integrated Bluetooth[®], allowing you to stream music including Pandora[®] (where available) from a smartphone or tablet. The system supports AM/FM

radio, playback from a USB drive or iPod and features SiriusXM[®] radio (US only) connectivity – all with full control from your HDS LIVE or Elite Ti² display.

NMEA 2000[®]



Lowrance NMEA 2000 network devices will share and/or display user-selectable data with displays

and instruments installed on a NMEA 2000 network.

Ethernet



Lowrance Ethernet Extension Cable allows two or more HDS displays to be networked together. This allows external GPS antenna, transducer or

Radar antenna to be shared across the network. Available sizes include 1.82m, 4.55m, 76.58m and 15.15m.



Link

Available for download on both Android and IOS, the free Link app allows users to control Lowrance® multifunction displays from a smartphone or tablet.

Flexible Control

Work with charts, sonar, and radar, control your on-board entertainment system, view data from connected engines and instruments, and much more (excludes autopilot control). With Link, you're constantly connected to your boat's key systems from anywhere on board – making it easier to plan trips, fish, sail, handle maintenance, and otherwise make the best of your time on the water.

Wireless Backup

Link gives you the ability to wirelessly back up and restore waypoints, routes, and tracks directly to your mobile device. This makes it easier than ever to protect your valuable boating data against loss or theft, and to keep your backups up-to-date with zero hassle.

Display Compatibility

The Link app is compatible with Simrad NSS evo3, NSS evo2, NSO evo2, NSS7/8/12*, and GO series displays; Lowrance HDS Carbon, HDS Gen3, HDS Gen2 Touch*, HDS Gen2**, and Elite Ti fishfinder/chartplotters; and B&G Zeus³, Zeus², Zeus Touch*, and Vulcan sailing chartplotters. Displays without built-in wireless connectivity require an additional WIFI-1 module.

To enable the Link app, a free software update may be required for your display.

* Mirroring only – no backup functionality.

** View only – no backup or remote control functionality.

Device Compatibility

Link works with the Apple iPhone 5s and later devices running iOS 9 or above, and is designed to work with Android devices running Android 4.4 or above.

Lowrance® Part Number List

HDS LIVE

HDS LIVE 16	HDS-16 LIVE with Active Imaging 3-in-1 Transducer (AUS/NZ)	000-14910-001
HDS LIVE 16	HDS-16 LIVE No Transducer (AUS/NZ)	000-14909-001
HDS LIVE 12	HDS-12 LIVE with Active Imaging 3-in-1 Transducer (AUS/NZ)	000-14908-001
HDS LIVE 12	HDS-12 LIVE No Transducer (AUS/NZ)	000-14907-001
HDS LIVE 9	HDS-9 LIVE with Active Imaging 3-in-1 Transducer (AUS/NZ)	000-14906-001
HDS LIVE 9	HDS-9 LIVE No Transducer (AUS/NZ)	000-14905-001
HDS LIVE 7	HDS-7 LIVE with Active Imaging 3-in-1 Transducer (AUS/NZ)	000-14904-001
HDS LIVE 7	HDS-7 Live No Transducer (AUS/NZ)	000-14903-001

ELITE Ti²

Elite-12 Ti ²	Elite-12 Ti ² Active Imaging 3-in-1 (AUS/NZ)	000-14661-001
Elite-12 Ti ²	Elite-12 Ti ² No Transducer (AUS/NZ)	000-14655-001
Elite-9 Ti ²	Elite-9 Ti ² No Transducer (AUS/NZ)	000-14645-001
Elite-9 Ti ²	Elite-9 Ti ² Active Imaging 3-in-1 (AUS/NZ)	000-14651-001
Elite-7 Ti ²	Elite-7 Ti ² Active Imaging 3-in-1 (AUS/NZ)	000-14641-001
Elite-7 Ti ²	Elite-7 Ti ² HDI Transducer (AUS/NZ)	000-14637-001
Elite-7 Ti ²	Elite-7 Ti ² No Transducer (AUS/NZ)	000-14631-001

HOOK²

TRIPLESHOT	HOOK ² 12 TripleShot	HOOK ² -12 TRIPLESHOT AUS/NZ	000-14408-001
	HOOK ² 9 TripleShot	HOOK ² -9 TRIPLESHOT AUS/NZ	000-14407-001
	HOOK ² 7 TripleShot	HOOK ² -7 TRIPLESHOT AUS/NZ	000-14405-001
	HOOK ² -7X GPS TripleShot	HOOK ² -7X GPS TRIPLESHOT	000-14022-001
	HOOK ² 5 TripleShot	HOOK ² -5 TRIPLESHOT AUS/NZ	000-14403-001
	HOOK ² -9 Splitshot HDI	HOOK ² -9 SPLITSHOT HDI AUS/NZ	000-14406-001
	HOOK ² 7 SplitShot	HOOK ² -7 SPLITSHOT HDI AUS/NZ	000-14404-001
	HOOK ² -7X GPS Splitshot	HOOK ² -7X GPS SPLITSHOT	000-14020-001
	HOOK ² 5 SplitShot	HOOK ² -5 SPLITSHOT HDI AUS/NZ	000-14402-001
	HOOK ² -5X GPS Splitshot	HOOK ² -5X GPS SPLITSHOT	000-14016-001
BULLET	HOOK ² 4x GPS Bullet	HOOK ² -4X GPS BULLET SKIMMER CE ROW	000-14015-001
	HOOK ² -4X GPS Bullet Skimmer	HOOK ² -4X BULLET SKIMMER	000-14013-001

CASTABLES

FishHunter Pro	381 kHz/475 kHz/675 kHz	000-14239-001
FishHunter 3D	381 kHz/475 kHz/675 kHz	000-14240-001

NMEA 2000 NETWORK SENSORS

Fluid Level	NMEA 2000 Fluid Level Sensor	000-14434-001
Fuel Flow	NMEA 2000 Fuel Flow Sensor	000-11517-001
Fuel Data	NMEA 2000 Fuel Data Manager	000-11522-001
Pressure Sensor	NMEA 2000 Pressure Sensor	000-11523-001
Temp Sensor	NMEA 2000 Temperature Sensor	000-11520-001
Thru-Hull Temp	NMEA 2000 Thru-Hull Temperature Sensor	000-11521-001
Speed Sensor	NMEA 2000 Paddlewheel Speed Sensor	000-11519-001

WEATHER AND AUDIO

SonicHub2	SonicHub2 Marine Audio Server + Lowrance speakers	000-12301-001
SonicHub2 Module	SonicHub2 Marine Audio Server - Module Only	000-12302-001
Speaker Pack	2x Lowrance 6.5" Marine Speakers	000-12304-001

NAVIGATION

HALO24 Radar	Pulse Compression Radar	000-14541-001
Broadband 4G Radar	Broadband 4G Radar	000-10419-001
Broadband 3G Radar	Broadband 3G Radar	000-10418-001
Precision-9 Compass	Precision-9 Solid State Compass	000-12607-001
NAIS-500	NAIS-500 System — Class B AIS with NPSL-500, GPS-500 Antenna	000-13963-001
Point-1 Antenna	Point-1 Heading and GPS Sensor	000-11047-001
Outboard Pilot Hydraulic Pack	Lowrance Outboard Pilot Hydraulic Pack	000-11748-001
Outboard Pilot Cablesteer Pack	Lowrance Outboard Pilot Cablesteer Pack	000-11749-001

COMMUNICATION

Link-9 VHF	Link-9 Class D DSC VHF Radio	000-14911-001
Link-6S VHF	Link-6S Class D DSC VHF Radio	000-14493-001
Link-2 VHF	Link-2 DSC VHF HandHeld Radio	000-10782-001

Lowrance® Part Number List

MOUNTING ACCESSORIES

Kayak Kit	Portable Kayak Kit	000-12292-001
-----------	--------------------	---------------

MAPPING

C-MAP	C-MAP MAX-N+ C: AU-Y060 : AUSTRALIA NEW ZEALAND COASTAL CONTL	000-13473-001
C-MAP	C-MAP MAX-N+ W: AU-Y010 : VICTOR HARBOR TO WELLESLEY ISLANDS	000-12758-001
C-MAP	C-MAP MAX-N+ W: AU-Y011 : CERVANTES TO SEAL ROCKS	000-12759-001
C-MAP	C-MAP MAX-N+ W: AU-Y012 : CAIRNS TO ESPERANCE	000-12760-001
C-MAP	C-MAP MAX-N+ L: AU-Y260 : ROBE TO BATEMANS BAY	000-12123-001
C-MAP	C-MAP MAX-N+ L: AU-Y261 : MALACCOOTA TO BRISBANE	000-12124-001
C-MAP	C-MAP MAX-N+ L: AU- Y262: TWEED HEADS TO WEIPA	000-12125-001
C-MAP	C-MAP MAX-N+ L: AU-Y264 : CAPE FLATTERY TO KING SOUND	000-12127-001
C-MAP	C-MAP MAX-N + L: AU-Y267 : DARWIN TO ESPERANCE	000-12130-001
C-MAP	C-MAP MAX-N+ L: AU-269 : PORT EYRE TO APOLLO BAY	000-12132-001
C-MAP	C-MAP MAX-N+ L: AU-Y222 : NEW ZEALAND, CHATHAM I. AND KERMADEC I.	000-12122-001

TRANSDUCERS—TRANSOM MOUNT

Transducer	Tilt	Frequency	Compatible Units	Connector	Part Number
Active Imaging 3-in-1	—	Med/High/CHIRP/SideScan/DownScan	HDS LIVE, HDS Carbon, Elite Ti ²	9-Pin	000-14489-001
Active Imaging 3-in-1(6-foot cable)	—	Med/High/CHIRP/SideScan/DownScan	HDS LIVE, HDS Carbon, Elite Ti ²	9-Pin	000-14814-001
Active Imaging 2-in-1	—	SideScan/DownScan	HDS LIVE, HDS Carbon, Elite Ti ²	9-Pin	000-14490-001
LiveSight	—	LiveSight Transducer with Mounts**	HDS LIVE, HDS Carbon (Carbon Requires PSI-1)	9-Pin	000-14458-001
LiveSight PSI-1	—	Performance Sonar Interface**	HDS Carbon	—	000-14899-001
High Speed Skimmer	—	Med/High CHIRP	HDS LIVE, HDS Carbon, Elite Ti ² , Elite Ti, HOOK ² 12/7/5*	9-Pin	000-14884-001
High Speed Skimmer	—	Low/High CHIRP	HDS LIVE, HDS Carbon, Elite Ti ² , Elite Ti, HOOK ² 12/7/5*	9-Pin	000-14885-001
HDI Skimmer (Lowrance Blue)	—	Med/High CHIRP/DownScan	HDS LIVE, HDS Carbon, Elite-Ti ² , Elite Ti, HOOK ² 12/7/5*	9-Pin xSonic	000-12570-001
HDI Skimmer	—	Low/High CHIRP/DownScan	HDS LIVE, HDS Carbon, Elite-Ti ² , Elite Ti, HOOK ² 12/7/5*	9-Pin xSonic	000-12569-001
StructureScan 3D	—	3D/Sidescan/DownScan	HDS LIVE, HDS Carbon	Dual 12-Pin	000-12395-001
Bullet Skimmer	—	200 kHz	HOOK ² 4x Bullet	6-Pin	000-14027-001
SplitShot	—	High CHIRP/DownScan	HOOK ² SplitShot Displays	8-Pin	000-14028-001
TripleShot	—	High CHIRP/SideScan/DownScan	HOOK ² TripleShot Displays	8-Pin	000-14029-001

*Requires Adaptor Cable

**Available early 2019

TRANSDUCERS—THRU HULL

Transducer	Tilt	Frequency	Compatible Units	Connector	Part Number
LiveSight	—	LiveSight Down Thru-Hull	HDS LIVE, HDS Carbon (Carbon Requires PSI-1)	9-Pin	000-14897-001
StructureScan 3D (Stainless steel, single)	—	3D/SideScan/DownScan	HDS LIVE, HDS Carbon	Dual 12-Pin	000-13559-001
StructureScan 3D (Stainless steel, pair)	—	3D/SideScan/DownScan	HDS LIVE, HDS Carbon	Dual 12-Pin	000-13560-001
StructureScan HD (Plastic, single)	—	SideScan/DownScan	HDS LIVE, HDS Carbon	9-Pin	000-11029-001
StructureScan HD (Stainless steel, single)	—	SideScan/DownScan	HDS LIVE, HDS Carbon	9-Pin	000-11459-001
StructureScan HD (Stainless steel, pair)	—	SideScan/DownScan	HDS LIVE, HDS Carbon	9-Pin	000-11460-001
StructureScan 3D (Stainless steel, single)	—	Low/High CHIRP/3D/SideScan/DownScan	HDS LIVE*, HDS Carbon	Dual 12-Pin, 7-Pin	000-14254-001
StructureScan 3D (Stainless steel, single)	—	Med/High CHIRP/3D/SideScan/DownScan	HDS LIVE*, HDS Carbon	Dual 12-Pin, 7-Pin	000-14255-001
TotalScan (Stainless steel, single)	—	Low/High CHIRP/SideScan/DownScan	HDS LIVE, HDS Carbon, Elite Ti ² , Elite Ti	9-Pin	000-14259-001
TotalScan (Stainless steel, single)	—	Med/High CHIRP SideScan/DownScan	HDS LIVE, HDS Carbon, Elite Ti ² , Elite Ti	9-Pin	000-14257-001
Bronze HDI	0	Low/High CHIRP/DownScan	HDS LIVE, HDS Carbon, Elite Ti ² , Elite Ti	9-Pin	000-13905-001
	12	Low/High CHIRP/DownScan	HDS LIVE, HDS Carbon, Elite Ti ² , Elite Ti	9-Pin	000-13906-001
	20	Low/High CHIRP/DownScan	HDS LIVE, HDS Carbon, Elite Ti ² , Elite Ti	9-Pin	000-13907-001
*Requires Adaptor Cable					

TRANSDUCERS—TROLLING MOTOR/SHOOT-THRU HULL

Transducer	Tilt	Frequency	Compatible Units	Connector	Part Number
Pod Shoot-Thru (No Temp)	—	Med/High CHIRP	HDS LIVE, HDS Carbon, Elite-Ti ² , Elite Ti, HOOK ² 12/7/5*	9-Pin	000-14886-001
Pod - Trolling Motor**	—	Med/High CHIRP	HDS LIVE, HDS Carbon, Elite-Ti ² , Elite Ti, HOOK ² 12/7/5*	9-Pin	000-14888-001
Pod Shoot-Thru (Remote Temp)	—	Med/High CHIRP	HDS LIVE, HDS Carbon, Elite-Ti ² , Elite Ti, HOOK ² 12/7/5*	9-Pin	000-14887-001

*Requires Adaptor Cable, **Trolling Motor Mount Only

ADAPTOR CABLES

7-to-9 Pin Adaptor	Connects 7-Pin transducers to displays with 9-Pin connectors (HDS LIVE/Carbon/Elite Ti ² , Elite Ti)	000-13313-001
7-Pin HOOK ² Adaptor	Connects 7-Pin transducers to HOOK ² 5/7/9/12	000-14068-001
9-Pin HOOK ² Adaptor	Connect 9-Pin xSonic transducers to HOOK ² 5/7/9/12	000-14069-001
9-Pin Black to 7-Pin Blue	Connects 9-Pin transducers to displays with 7-Pin blue connectors	000-13977-001
7-Pin to HOOK ² 4x Adaptor	Connects 7-Pin transducers to HOOK ² 4x displays	000-14070-001

LOWRANCE®

Telephone (AU): +61 2 9936 1000

Telephone (NZ): +64 9 925 4588

www.lowrance.com

Products, features and specifications subject to change without notice.
©2019 Navico®



facebook.com/lowrance



twitter.com/lowrancefishing



youtube.com/user/lowrance



instagram.com/lowrancefishing

985-11800-001