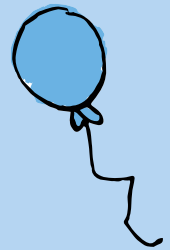




ROALD DAHL STORY DAY



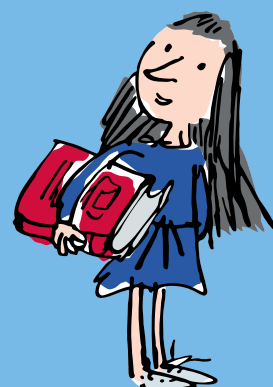
PARTY PACK 2021



13
SEPTEMBER

CONTENTS

Greetings!	3
Fantastical Friends	4-5
Marvellous Medicine Ingredients	6
Making Marvellous Mixtures	7
Gobblefunking with Words	8
Create Your Own Character	9
Brilliant Book Search	10
Courageous Classmates	11
Never Grow Up	12
Roald Dahl's Marvellous Children's Charity	13-14
A New Room for the Factory	15-16
Matilda the Musical	17
Dress Up	18
Colouring In	19
YPO: Wave of Thanks	20



ROALD DAHL STORY DAY

GREETINGS,

Happy Roald Dahl Story Day! Inside this pack you'll find a range of fun and fantabulous activities as we celebrate the kindness of James, the bravery of Matilda, the heart of the BFG, the imagination of George and the invention of Wonka.

Learn how to make a phizz-whizzing magic potion with George, unscramble the BFG's jumbled-up words and design your own room for Wonka's factory.

No matter where you're celebrating, you're sure to have a truly wonderful day!

Let the party begin!



PLANNING YOUR CELEBRATIONS

Lots of excellent ideas for how to celebrate, wherever you are.

If you have a month:

Read a chapter of a Roald Dahl book every day. *Charlie and the Chocolate Factory* has exactly 30, enough chapters for each day, or *Danny the Champion of the World* has 22 if you're reading only on school days.

If you have a week:

Visit the Roald Dahl Story Day hub on roalddahl.com to find lots of resources to decorate your room ahead of the day.

If you have a day:

Decorate your classroom door and choose a selection of activities from this pack. Don't forget to enter our competition, and make sure to finish the day with a chapter or two of your favourite Roald Dahl story.

If you have an hour:

Pick one activity from the pack. We highly recommend **Making Marvellous Mixtures** or Matilda's **Brilliant Book Search**.

Find more ways to celebrate on the Roald Dahl website: www.roalddahl.com



FANTASTICAL FRIENDS

When James enters the giant peach he finds a very special group of new friends. Learn more about the importance of friendship in this adapted extract from our *James and the Giant Peach* lesson plan pack. Discover more Roald Dahl lessons at [RoaldDahl.com/Teach](https://www.roalddahl.com/Teach)

Starter:

What is friendship?

Why do people become friends?

Name three traits that you look for in a friend:

1:

2:

3:

Read James' poem from chapter 37, pp139-143. You can also find this online in our James lesson plan pack p29-31.

Based on the poem, tell us a special talent and positive trait for each of the below characters:

Centipede	Earthworm	Grasshopper	Miss Spider	Ladybird

Using James' poem as inspiration, **interview someone in your class** (or, if learning at home, a friend, carer or family member) and find the answers to the below prompts.

Name of person being interviewed

Favourite activity/ hobby

Special talent

Ideal pet

Favourite food

Musical interests

Ideal holiday

Three wishes they would make (without wishing for more wishes!)

1 2 3



Now you've made a new friend (or discovered some new things about an old one) **fill in the writing frame below**. Present this back to the class or make a display so that everyone else can get to know your new friend too.

And now without excuse

I'd like to introduce (name)

This (adjective) (adjective) **person**

is very good at.....

They like to

.....

If(name) **had three wishes they would be**

.....

.....

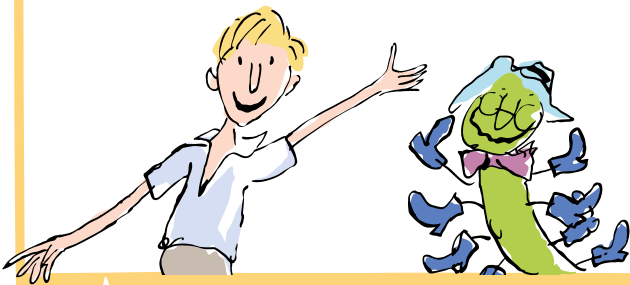
.....

Their idea of a holiday is

.....

.....

So put your hands together for (name)



MARVELLOUS MEDICINE INGREDIENTS

George uses all sorts of wonderfully wacky ingredients to create his marvellous medicine. Fill in the gaps and tell us what you would put in your own magic potion.

Across

- To make the old bird sing
- To keep Grandma smelling fresh
- To paint Grandma's teeth a bright red, if 3 DOWN doesn't work
- To make sure the mixture is the right colour

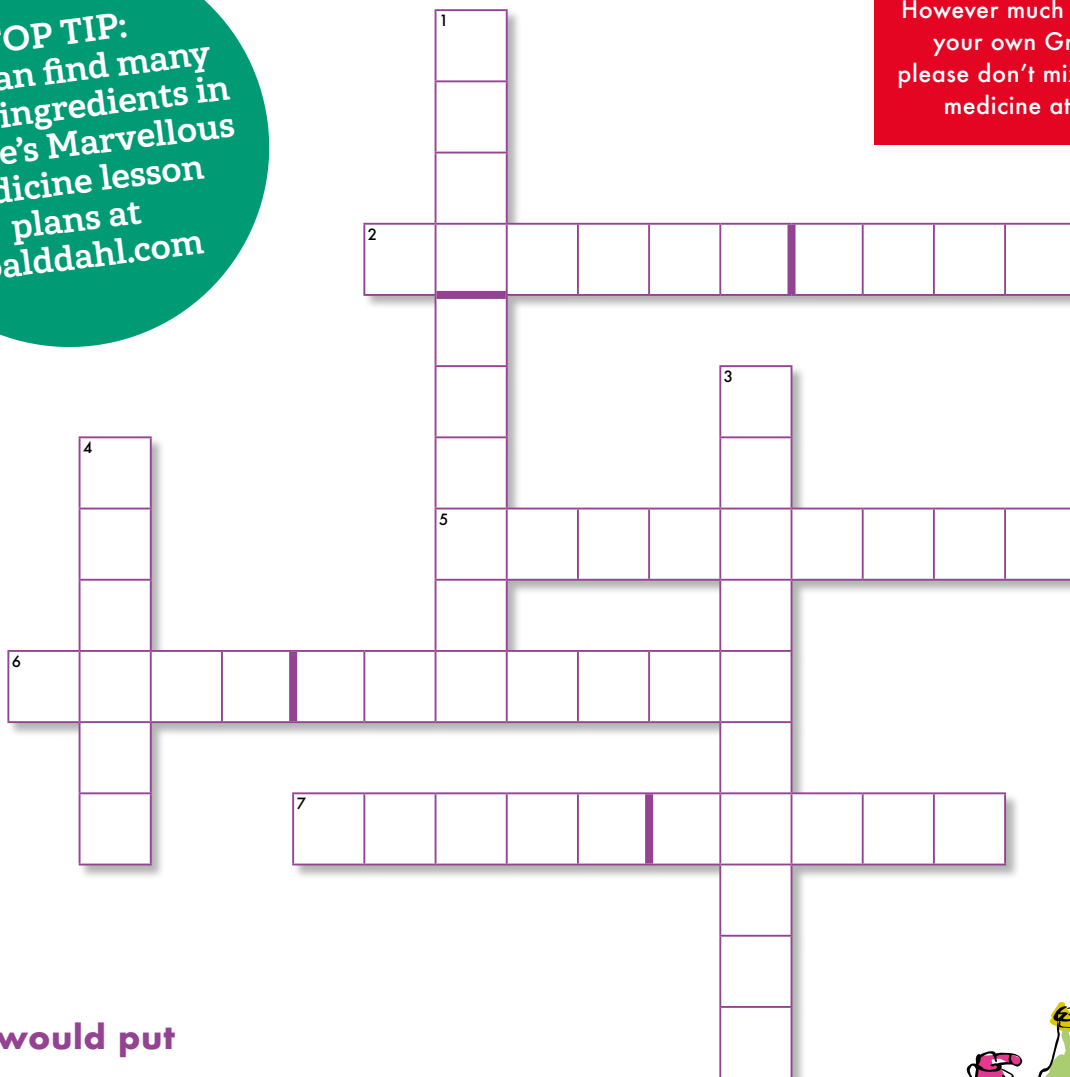
Down

- To stop Grandma (and dogs) from being bitten by itchy biting insects
- George puts this in to brighten up Grandma's horrid brown teeth
- To keep Grandma's joints from creaking

TOP TIP:
You can find many of the ingredients in George's Marvellous Medicine lesson plans at Roalddahl.com

CAUTION:

However much you dislike your own Grandma, please don't mix your own medicine at home.



I would put

in my own marvellous medicine



ANSWERS: Across: 2. Canary Seed 5. Deodorant 6. Nail Varnish 7. Brown Paint Down: 1. Flea Powder 3. Toothpaste 4. Grease



MAKING MARVELLOUS MIXTURES

We absolutely cannot possibly condone making a medicine to make Grandma disappear, but we do have some other peculiar potions up our sleeves.

RAINBOW MIXTURE

You will need:

- 5 glasses or jars
- Warm water
- A measuring cup or beaker
- Sugar
- Tablespoon
- Food colouring
- Pipette

- 1 Set up your glasses and measure one cup (or 240ml) of warm water into each one.
- 2 Using the pipette, add a couple of drops of food colouring to each glass. Make sure to use different colours in each glass.
- 3 Add different amounts of sugar to each glass, starting at 2 tablespoons in the first, 4 tablespoons in the second, 6 in the third and 8 in the last. Stir until the sugar is fully dissolved.
- 4 Using your pipette, suck up some of the liquid in each glass and add it to your final jar. For best results we suggest starting with the mixture with the most sugar and working your way to the least.

WHY DOES IT WORK?

Density measures the amount of mass in a given space. Some substances have more **loosely packed molecules** (making them lighter) and others have more **tightly packed molecules** (making them heavier).

When you add sugar to water, the sugar molecules fill the spaces between the water molecules, **meaning the molecules are much more tightly packed** and the density of the mixture increases.



GOBBLEFUNKING WITH WORDS

The BFG can sometimes get a little mixed up, but Sophie is always on hand to help unuddle him. Help the pair to untangle all the jumbled words below.

TOP TIP:
They are
all words
inspired by
the BFG!

ARTY COUNTING

.....

DR SAME

.....

BRUNCH ENCORE

.....

CHEER PILOT

.....

BADGERING
NIFTILY

.....

RIGHT NAME

.....

ANGELICA
HUMPBACK

.....



ANSWERS: Dr Same - Dreams, Arty Counting - Giant Country, Cheer Pilot - Helicopter, Brunch Encore - Bonecruncher, Right Name - Nighmare, Badgering Niftily - Big Friendly Giant, Angelica Humpback - Buckingham Palace



CREATE YOUR OWN CHARACTER

Use the prompts below to create your own character. Your school can also book a live 'Creative Characters' online session with the Roald Dahl Museum and Story Centre, from anywhere in the UK!

MY CHARACTER'S NAME IS

.....

THEIR SPECIAL SKILL IS

.....

THEIR FAVOURITE THING TO DO IS

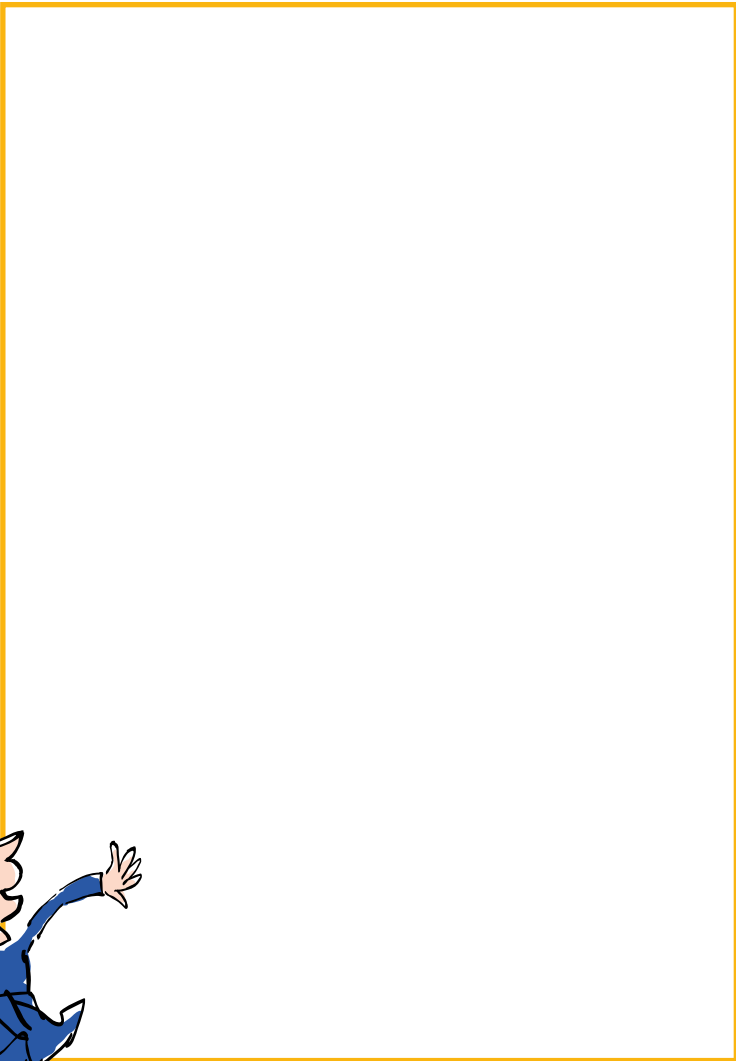
.....

WHAT THREE WORDS WOULD YOU USE TO DESCRIBE YOUR CHARACTER?

1

2

3



TOP TIP!

Use your favourite Roald Dahl characters as inspiration. Maybe they'll be GIANT like the BFG, or very small, like Matilda. Will they be kind like Charlie Bucket, or adventurous like James?



DRAW YOUR CHARACTER HERE

THE ROALD DAHL MUSEUM AND STORY CENTRE

ONLINE LIVE LESSONS

BRING THE ROALD DAHL MUSEUM AND ITS EXPERTS RIGHT INTO YOUR CLASSROOM BY BOOKING A FANTABULOUS LIVE ONLINE SESSION, TAILORED TO EITHER YEARS 2-4 OR YEARS 5-8.

SESSION LEADERS WILL CONNECT YOU DIRECTLY TO THE MUSEUM, WHEREVER YOU ARE, THROUGH A MIX OF LIVE PRESENTATION, FILMS FROM IN AND AROUND OUR GALLERIES, AND PRE-DELIVERED ACTIVITIES YOU CAN FOLLOW DURING THE LIVE SESSION.

FIND OUT MORE AND BOOK ONLINE AT: [ROALDDAHL.COM/MUSEUM/SCHOOLS](https://www.roalddahl.com/museum/schools)

BRILLIANT BOOK SEARCH

Matilda has read every book in the children's section of her local library, and she'd love some new recommendations. **Take a look at the books in your classroom or school library** and see if you can find some suggestions for her!

	Book title	Page no.	Quote / more information
1. A good character			
2. A nasty character			
3. A brave action			
4. Someone sticking up for a friend			
5. A powerful word			
6. A good friend			
7. Someone being kind			



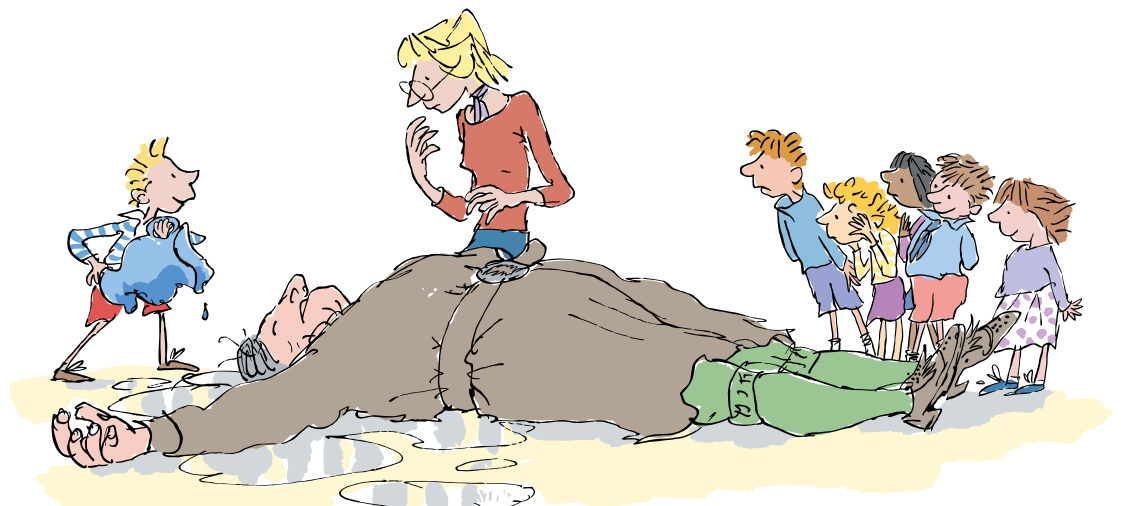
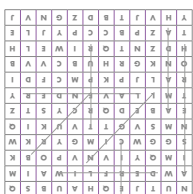
COURAGEOUS CLASSMATES

Matilda doesn't stand up to the Trunchbull alone; many of her classmates are also incredibly brave in standing up to the bullying headmistress. Help to find them all in the grid below.

N	U	T	J	E	Q	H	A	U	B	S	Q
A	W	D	E	R	F	L	I	W	A	I	M
I	M	Q	Y	I	V	N	V	P	O	B	K
S	G	G	W	C	I	M	G	Y	R	K	W
N	M	S	V	G	T	T	V	U	K	I	Q
E	A	B	E	D	Q	R	C	Y	S	T	Z
T	M	L	L	A	V	E	N	D	E	R	Y
R	A	L	J	P	K	P	M	C	F	D	I
O	N	K	G	R	H	U	B	C	V	V	B
H	D	Z	N	T	Q	R	I	W	E	L	H
T	A	Z	P	B	C	C	P	Y	J	L	E
Y	H	V	J	T	B	D	Z	G	N	V	J

Names to find

Lavender, Bruce, Hortensia, Eric, Amanda, Nigel, Rupert, Wilfred





What We Do

Our charity provides specialist nurses and support for seriously ill children. There are currently 82 Roald Dahl Specialist Nurses across the UK who care for over 21,000 children with complex, lifelong conditions including rare diseases, sickle cell anaemia, neuromuscular conditions and epilepsy.

Support Our Charity

Celebrate your pupils' favourite Roald Dahl stories and characters and help to raise vital donations to help seriously ill children lead a more marvellous life.



Marvellous Dress Up Day

Invite pupils to get all dressed up as their favourite Roald Dahl character in exchange for a small donation.

Set up a JustGiving Page

Collect any donations digitally with a JustGiving page & share a link with your marvellous supporters.

Visit www.roalddahlcharity.org/schools to find costume inspiration, information on how to set up your JustGiving page and other ways to get involved!

For more information or resources find us on:

www.roalddahlcharity.org/schools

schools@roalddahlcharity.org

01494 890 465

Marvin's Marvellous Wordsearch

Whilst you think about the amazing ways you can support Roald Dahl's Marvellous Children's Charity, why not do our Word Search and think about putting the 'fun' in fundraising!



Charity
Fun

Marvellous
Happy

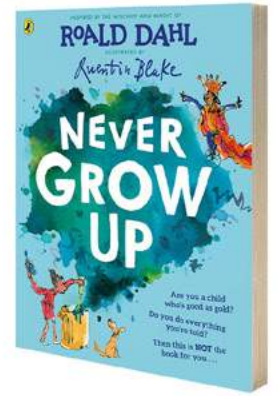
Giving
Marvin

Crocodile
Roald Dahl

NEVER GROW UP

NEVER GROW UP, ALWAYS DOWN!

Just look at all the very smartest
Scientists and famous artists
Who had the wit, the grit, the spunk
To think thoughts up-till-then unthunk.
Ignored the signs that said "NO WAY"
And went and did it anyway.



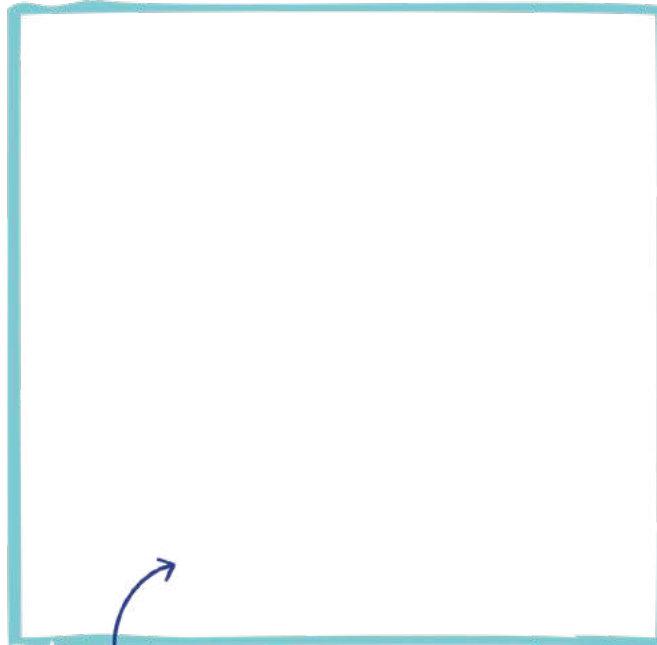
**FIND NEVER GROW UP
IN BOOKSTORES NOW!**

WHAT DO YOU WANT TO BE WHEN YOU NEVER GROW UP?

Be a wrestler!



Save the planet's
rarest beast!



Whizz round in a helicopter,
A fearless, flying ostrich doctor!



**Describe and draw
your ideas here**

Amaze the whole world
when you bake . . .
**THE BIGGEST EVER
CHOCOLATE CAKE!!**



The future's created by a curious,
Mischievous and disobedient few,
Who are (in fact) a lot . . . like . . .

... YOU



COMPETITION: A NEW ROOM IN THE FACTORY

Willy Wonka is a magician with chocolate! He can make absolutely anything you can think of, anything at all. Draw a new room for Wonka's factory and write a short paragraph about it. What might be made there? What would it look like? How would he create it? We want to hear absolutely everything!

HOW TO ENTER

Use the next page for your entry. Don't forget to clearly fill in the contact details of your school, parent or guardian and post your entries to Puffin Books Marketing, Roald Dahl Story Day Competition, Penguin Random House Children's, One Embassy Gardens, 8 Viaduct Gardens, London, SW11 7BW by 11:30pm on 29th October 2021.

THE JUDGES

A panel of judges including a member of The Roald Dahl Story Company and a member of Puffin Books will be selecting the winner.

THE PRIZES

A bundle of brilliant Roald Dahl books and activity books. Full terms and conditions available at: <https://1.shortstack.com/xJ0wfH>

WHAT THE JUDGES ARE LOOKING FOR

Imagination and invention! We're looking for a really creative entry. Think hard about what makes your factory room special. How does it differ from other rooms in the factory? What gets made in the room, and why would it excite people? Think about what you might say if you were trying to get people to visit the room, what would you highlight? Make sure to give lots of detail.



Read an extract from the book and get inspired!

The Chocolate Room

'An important room, this!' cried Mr Wonka. 'This is the nerve centre of the whole factory. And so beautiful! I insist upon my rooms being beautiful! In we go, then! But do be careful, my dear children! Don't lose your heads! Don't get over-excited! Keep very calm!'

Mr Wonka opened the door. Five children and nine grown-ups pushed their ways in - and oh, what an amazing sight it was that now met their eyes!

They were looking down upon a lovely valley. There were green meadows on either side of the valley, and along the bottom of it there flowed a great brown river.

What is more, there was a tremendous waterfall halfway along the river - a steep cliff over which the water curled and rolled in a solid sheet, and then went crashing down into a boiling churning whirlpool of froth and spray.

'The waterfall is most important!' Mr Wonka went on. 'It mixes the chocolate! No other factory in the world mixes its chocolate by waterfall! But it's the only way to do it properly! The only way! And do you like my trees?' he cried, pointing with his stick. 'And my lovely bushes? Don't you think they look pretty? And of course they are all eatable! All made of something different and delicious! The grass you are standing on, my dear little ones, is made of a new kind of soft, minty sugar that I've just invented! I call it swudge! Try a blade! Please do! It's delectable!'



COMPETITION ENTRY PAGE



Describe why you think this room would be an excellent fit for Wonka's factory:.....

.....

.....

.....

.....

.....

.....

Name:..... Caregiver/ Teacher:.....

Caregiver/Teacher email or contact:.....



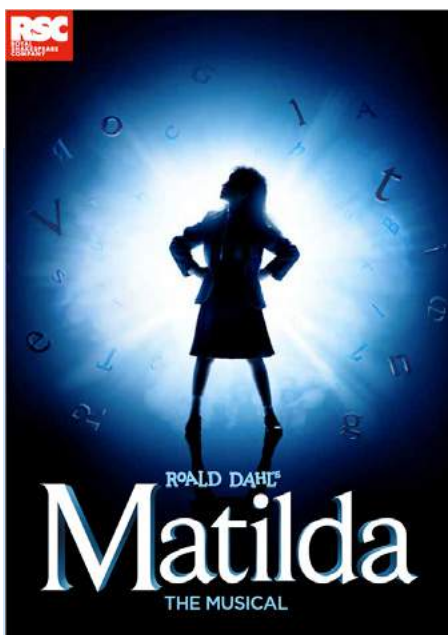
MATILDA THE MUSICAL

Now in its 10th year at the Cambridge Theatre in London's West End!
Use the below extract from Matilda The Musical's school resources, created by the Royal Shakespeare Company, to explore character with your class.

BECOMING REVOLTING CHILDREN

Inspired by the song 'Revolting Children', written by the musical's Composer and Lyricist Tim Minchin, teach children how to physicalise character change within a scene by inventing a new pupil for Crunchem Hall.

- 1 Put children in pairs and explain that they are going to explore how to become 'revolting children' just like in the song from Matilda the Musical. They are going to move from 'nice' to 'naughty' on a scale of 1 to 5, with 1 being 'really nice' and 5 being 'really naughty'.
- 2 Explain that they are going to add an extra ingredient of disgustingness at each stage, so the change is gradual.
- 3 In pairs, ask pupils to split into director/ sculptor and model. The sculptor will direct their model to the proper pose.
- 4 Explain that you will ring Miss Trunchbull's school bell 5 times, and that each time it rings they must add another revolting quality to their character.
- 5 Swap so that each child may have a go at each role.



TICKETS FOR SCHOOL GROUPS

SPECIAL RATES ARE AVAILABLE FOR SCHOOL GROUPS OF 10 OR MORE ON SELECTED DATES, WITH 1 FREE TEACHER TICKET PER 10 TICKETS PURCHASED.

FOR MORE INFORMATION ON TICKETS FOR SCHOOLS AND MATILDA THE MUSICAL'S EXTENSIVE EDUCATION PROGRAMME VISIT:

WWW.MATILDATHEMUSICAL.COM



ROALD DAHL DRESS UP

Celebrate Roald Dahl Story Day in the very highest of style.

Hosting a dress up day? Why not support Roald Dahl's Marvellous Children's Charity. See p12.



HOW TO DRESS UP AS MISS SPIDER

- 1 Wear a black top and black leggings or trousers.
- 2 Stuff extra pairs of tights with newspaper.
- 3 Attach tights to a belt and put around your waist.
- 4 Take along your copy of *James and the Giant Peach* and your costume is complete!

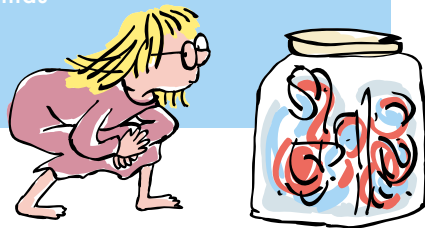
YOU WILL NEED:

- A black top
- Black leggings or trousers
- Black tights
- A belt
- Newspaper

HOW TO DRESS UP AS SOPHIE

YOU WILL NEED:

- A nightie or pyjamas
- Glasses
- A dream jar



- 1 Wear a nightie or pyjamas.
- 2 Add a pair of glasses.
- 3 Carry a dream jar with you.
- 4 Take along your copy of *The BFG* and your costume is complete!

FIND MORE DIY DRESS UP IDEAS ON: WWW.ROALDDAHL.COM/ROALDDAHLSTORYDAY

NOT A FAN OF DIY?

FIND A FULL RANGE OF
ROALD DAHL COSTUMES AT:

[WWW.SMIFFYS.COM/
COLLECTIONS/ROALD-
DAHL-COSTUMES](http://WWW.SMIFFYS.COM/COLLECTIONS/ROALDDAHL-COSTUMES)



In association

 smiffys

COLOURING-IN

The Roly-Poly Bird has lost his colours. Paint, glue or simply use your crayons and pencils to make him bright and beautiful again!



Download
the Preschool
Party Pack at
RoaldDahl.com





SPONSORS OF ROALD DAHL LESSON PLANS



A BIG THANK YOU

At YPO we want to say the biggest thank you to all of the education community for going above and beyond in the most challenging circumstances, and keeping the world learning.

KNOW A REAL MISS HONEY?

Do you know anyone within an education establishment who deserves to be recognised? Show them you recognise their efforts, and nominate them to have one of our very own YPO vehicles named after them.

ENTER NOW

Visit our website and tell us who you think deserves to be recognised for their efforts in the last year.



SCAN HERE TO ENTER & HAVE YOUR EDUCATORS NAME ON ONE OF YPO'S FLEET.

ENTRIES CLOSE MIDNIGHT 17.12.21



GET 10% OFF WITH YOUR FIRST ORDER AT YPO

Start shopping with YPO now and you will get 10% off for three months on all purchases – a great back to school treat!



SCAN THE QR CODE TO START SHOPPING

FIND THE FULL RANGE OF ROALD DAHL LESSON PLANS ONLINE AT:

ROALDDAHL.COM/TEACH

ROALD
DAHL



DON'T BE A TWIT!

