

OH NO!



**MONDAY
Again?**

GoToOnlyCodes.com

Photosynthesis Quiz Grade Breakdown

- 54-60= A
- 47-53= B
- 41-46= C
- 35-40= D
- 0-34= F

Grade Break Down

- Controversial Essay/Cell Respiration Essay (same amount of points so same breakdown)
- 67-75 = A
- 60-66 = B
- 52-59 = C
- 45-51 = D
- 0-44 = F

Notes from grading essays

- **PROOFREAD!!!!**

- Read out loud or have someone
- Capitalize
 - the first word in a sentence
 - proper nouns (I, Earth, NASA, PETA, DNA, Mars)
 - Do not capitalize words that are not proper nouns (planet, or definitions mid sentenceCellular Respiration.....)

PROOFREAD!!!!

- Complete sentences
- Confusing sentences
 - Read out loud if you stumble to understand so will reader
- Do not use abbreviations “resp” spell words out
 - Cannot, would not, will not, should not...

Proofreading



Notes from grading essays

- **When using sources:**

- Cite:

- end of material borrowed or at end of quote
 - Not mid sentence

- Lead ins:

- No: "An on-line source states" or "According to the article", ...
 - Readers need to know **WHO** said it

- After a quote you must state the author of your article

- When using sources:

- If quote is unclear or does not follow your sentences, state the meaning behind the source's comments
- Do not just state Web. you must document the website so your readers may look at your information
- Not all CD's need to be direct quotes
- Cite your sources if you do not then it's considered plagiarism or opinion (plagiarism is worse)

Cite Your Sources

An illustration featuring a rolled-up newspaper in the top right corner, a red pen with a silver band in the middle left, and a blue book in the bottom right corner. The text 'Cite Your Sources' is written in a large, red, handwritten-style font across the center.

Notes from grading essays

◉ When using sources:

- ◉ Follow MLA format found in your planner; if you don't have it ask:
 - ◉ <https://owl.english.purdue.edu/owl/resource/747/01/>
- ◉ Know what WORKS CITED means
 - ◉ Not websites you looked at, it means material that you have USED within your paper
- ◉ When writing a scientific paper use scientific sources, state scientific evidence
 - ◉ Remember if you need help finding sources come see me

Notes from grading essays

- Use the "we"
 - you are indicating that you are personally responsible for the research
- Topics:
 - If in intro? Must be in body and conclusion
 - Also your main arguments need to be addressed in your introduction
- Figures and statistics:
 - Ensure they are correct
 - Cite your source
- If it's a theory it's not a "Fact" it's evidence

Notes from grading essays

- When writing a paper for class, unless otherwise instructed, do not use the following terms
 - Stupid
 - How would they like it if
 - Horrible people
 - Monstrosities
 - Bad or Good (benefit or detriment)
- Must maintain a professional tone



gg61316011 www.gograph.com



Review Major Concepts Photosynthesis

PHOTOSYNTHESIS: Two Stages

- ◉ Light-Dependent Reaction

- ◉ Converts **light** energy into **chemical** energy

- ◉ Light-Independent Reaction

- ◉ Produces simple **sugars** (glucose)

- ◉ General Equation



- ◉ **INPUTS**

OUTPUTS

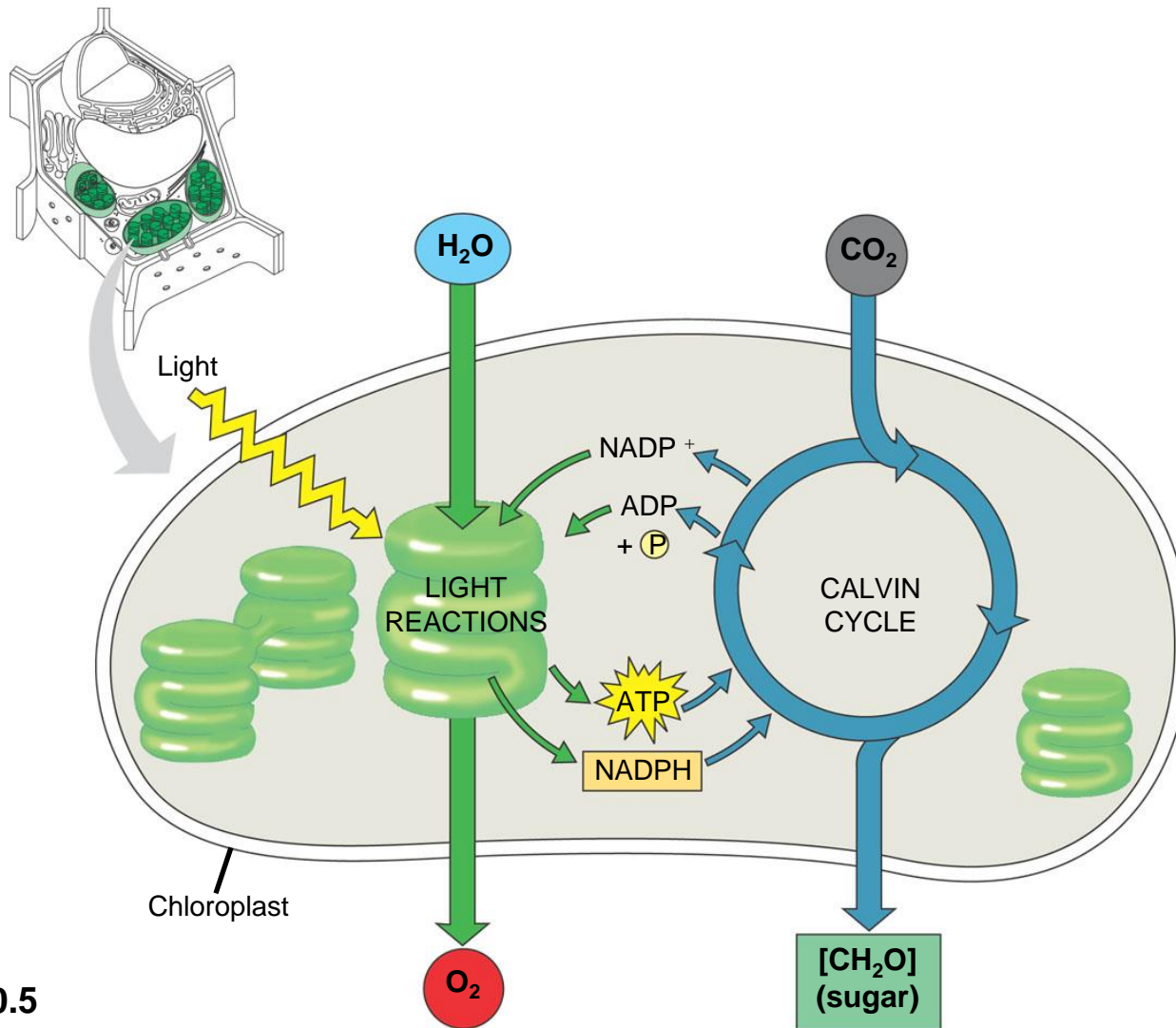
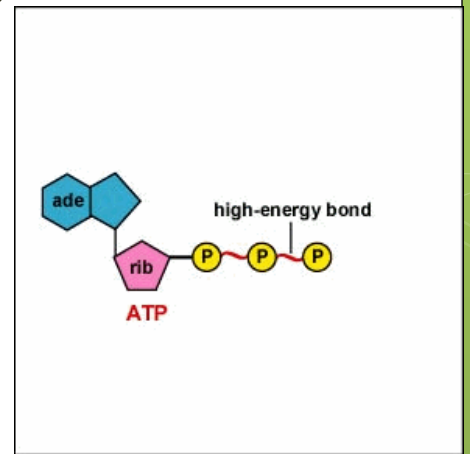


Figure 10.5

ATP

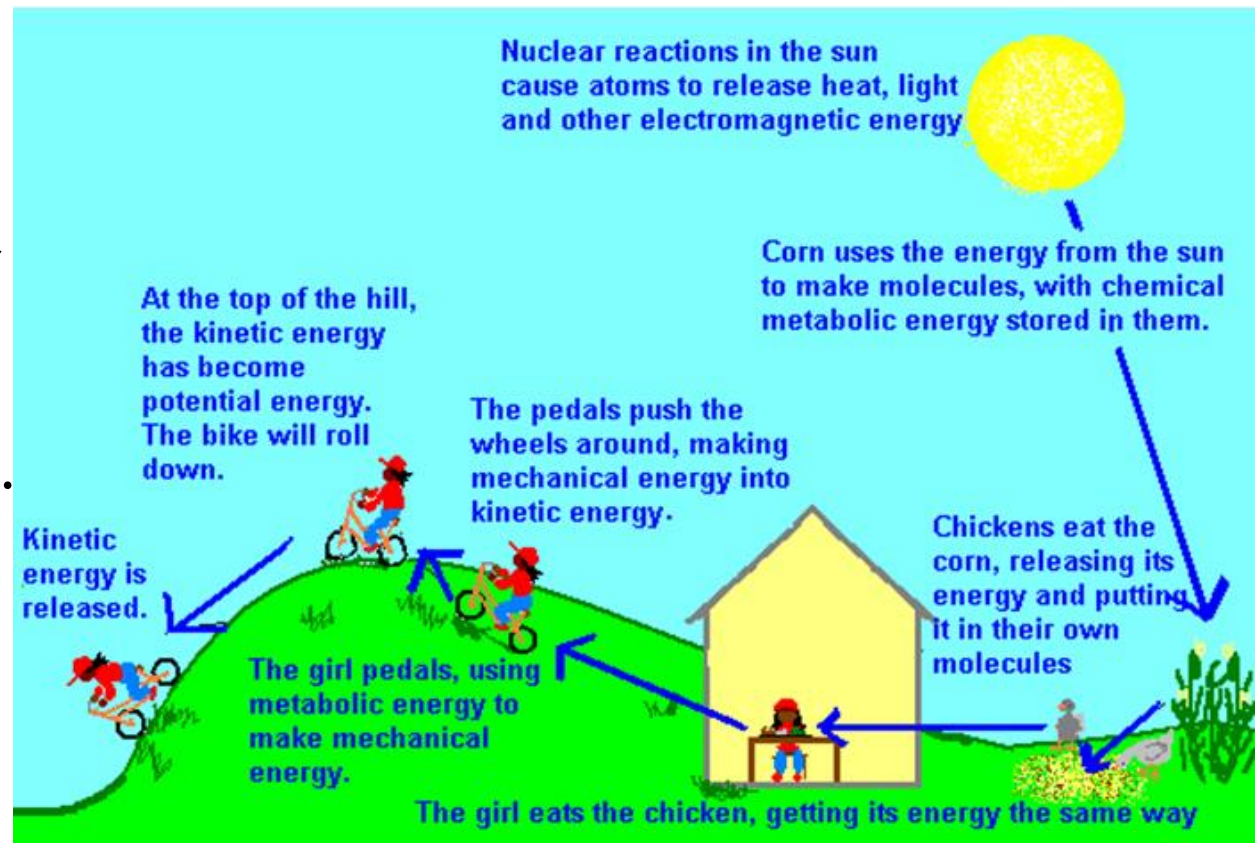
- ◉ Adenosine **Triphosphate**
- ◉ Stores energy in **high** energy bonds between **phosphates**
- ◉ ATP, or adenosine triphosphate, is a method of energy storage in living organisms



What types of energy are there?

Some words you might have used:

chemical,
potential,
gravitational,
kinetic,
thermal,
mechanical..





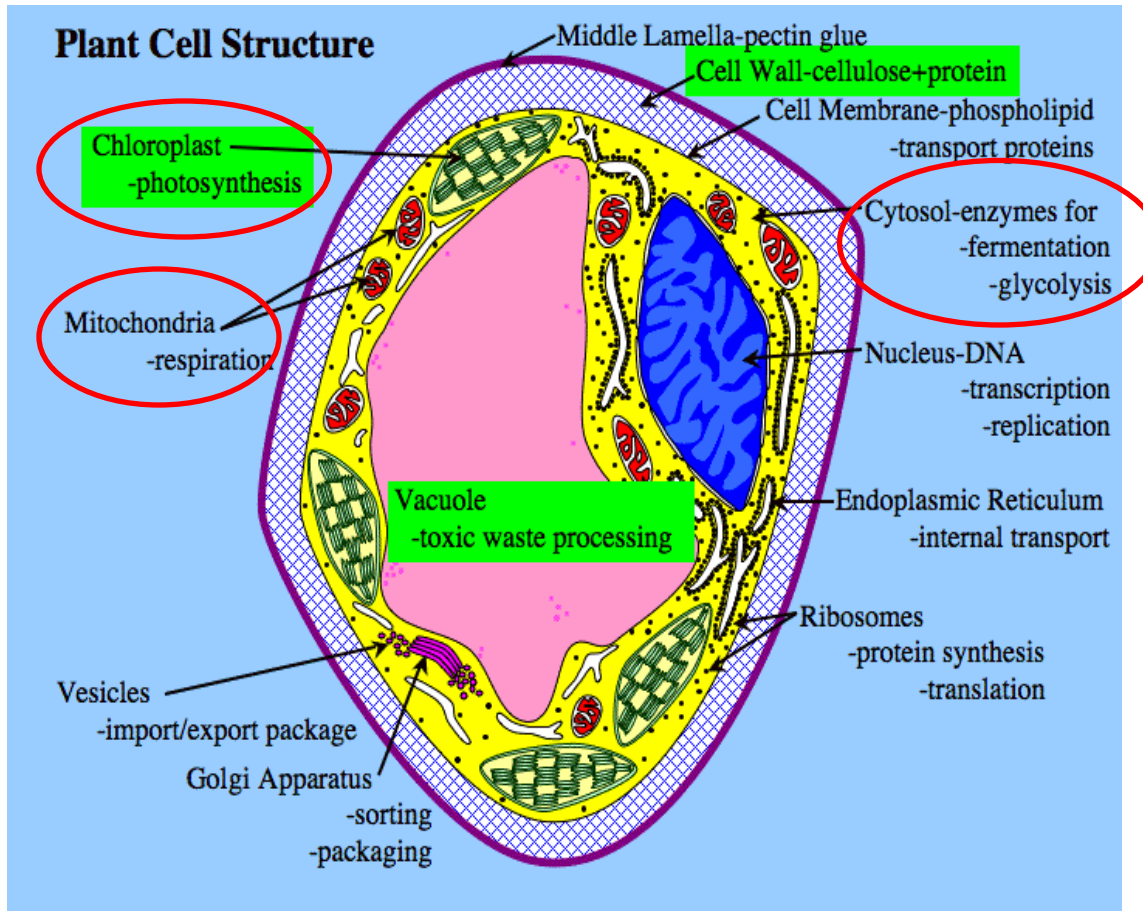
CELLS

How Cells Harvest Chemical
Energy

Update TOC

- Title: Cellular Respiration
- LT: I will review previous concepts of photosynthesis and begin to understand how cellular respiration works
 - (Before)

Quick Review



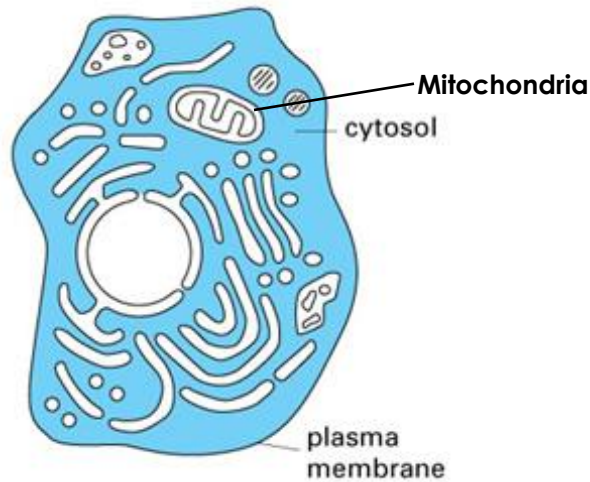
Sound
Familiar?

Cell Analogy
Project

Photosynthesis

Cellular Respiration

Occurs in the cytosol and the mitochondria



<http://lifeofplant.blogspot.com/2011/05/cytosol.html>

Cytosol: jelly like substance in the cytoplasm

Mitochondria: ?

"cellular power house",
they generate most of the
cell's supply of (ATP), used
as a source of chemical
energy

We have the where but what is cellular respiration?

- Occurs within all living things plants and animals
- Is essential for survival
- Is the process of breaking down glucose for energy
- Wait didn't we just make glucose in photosynthesis?

All that work we did and now we are going to break it down?

- Yup! $6 \text{ CO}_2 + 6 \text{ H}_2\text{O} \rightarrow \text{C}_6\text{H}_{12}\text{O}_6 + 6 \text{ O}_2$
Photosynthesis equation.

- Look Familiar?



- WHOA! Mind blown?

Cellular Respiration Equation



Work With table partner

- Work on the two worksheets provided
- Due tomorrow