

AHEAD OF TIME with Pantone®



BASF has partnered with the world's leading color authority to provide the most innovative color trends for your cosmetic formulations.

The Spring/Summer 2019 forecasts, Haven and Masterpiece, provide textures, concepts, color palettes, and formulations for your inspiration.

MACRO CONCEPT

HAVEN

Spring 2019

| | |
|-----------------------------|----|
| Introduction | 6 |
| Textures | 8 |
| Concepts | 10 |
| Preserving Cocoon | 12 |
| Aqua Pearl Sparkle | 14 |
| The Lightness of Mousseline | 16 |
| Optimized | 18 |
| Metallic Alchemy | 20 |
| Second Skin Effect | 22 |
| Captured Color | 24 |
| Colors | 26 |
| Formulations | 28 |

MACRO CONCEPT

MASTERPIECE

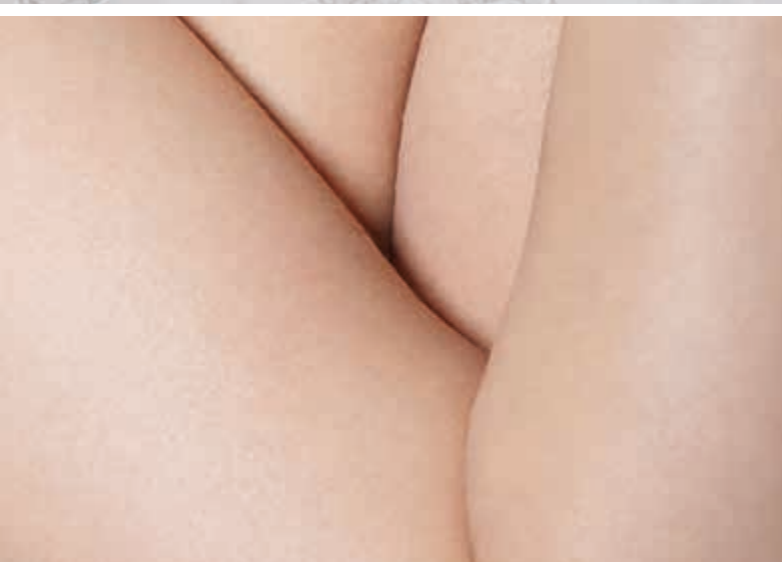
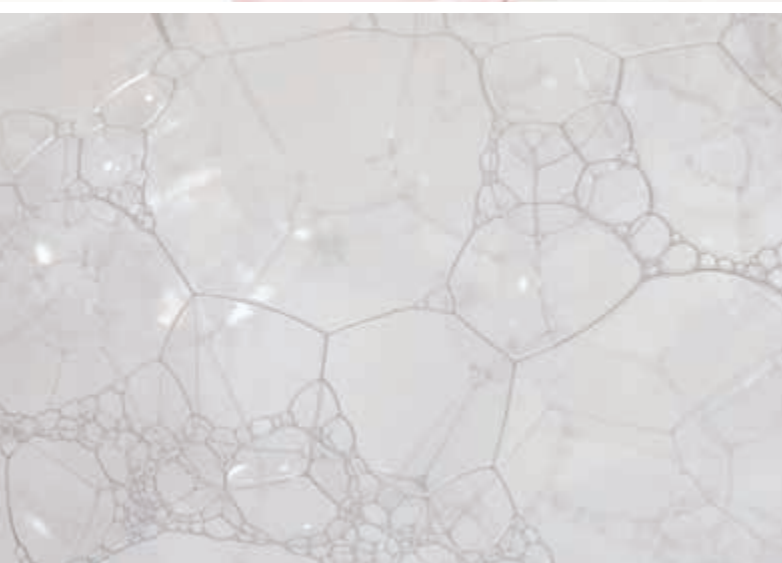
Summer 2019

| | |
|---------------------|----|
| Introduction | 40 |
| Textures | 42 |
| Concepts | 44 |
| Marbled Tones | 46 |
| Newly Mined Ore | 48 |
| Ceramic Glaze Sheen | 50 |
| Precious Extracts | 52 |
| Sumptuous Sands | 54 |
| Glasswork Science | 56 |
| Oil Paint | 58 |
| Colors | 60 |
| Formulations | 62 |

HAVEN Spring 2019

Haven envelops us in a luxurious cocoon, beautifying and shielding us from hectic modern living.

Modern life spins at hyperspeed – an endless tirade of e-mails, social media messages, online advertisements, and text messages keeping us informed every second. Pollution concerns continue to increase – including air, water, and food. Allergies are on the rise. We feel assailed from all sides. Spring/Summer 2019 offers us quiet refuge from these elements.



HAVEN Textures

Makeup textures are subtle, with unusual sheen effects and protective coverage. Translucent gradients, prismatic aqua pearl sparkle, and metallic textures add refined interest to color cosmetics. Built-in actives offer multifunctional benefits and protection against pollutants and allergies.

HAVEN Concepts

Formulations create a protective shield against harmful pollutants and allergens. The beauty trend for natural, bare looks evolves into enhanced nudes – skin tones infused with a light drop of orange are combined with whitened pastels. Feminine and sensuous, the palette brings soothing comfort and reassurance. Like a weightless second skin, beauty has a healthy natural sheen achieved through effect pigments that smooth, color-correct, and add discreet sheen. Makeup becomes a calm haven of purity and well-being.





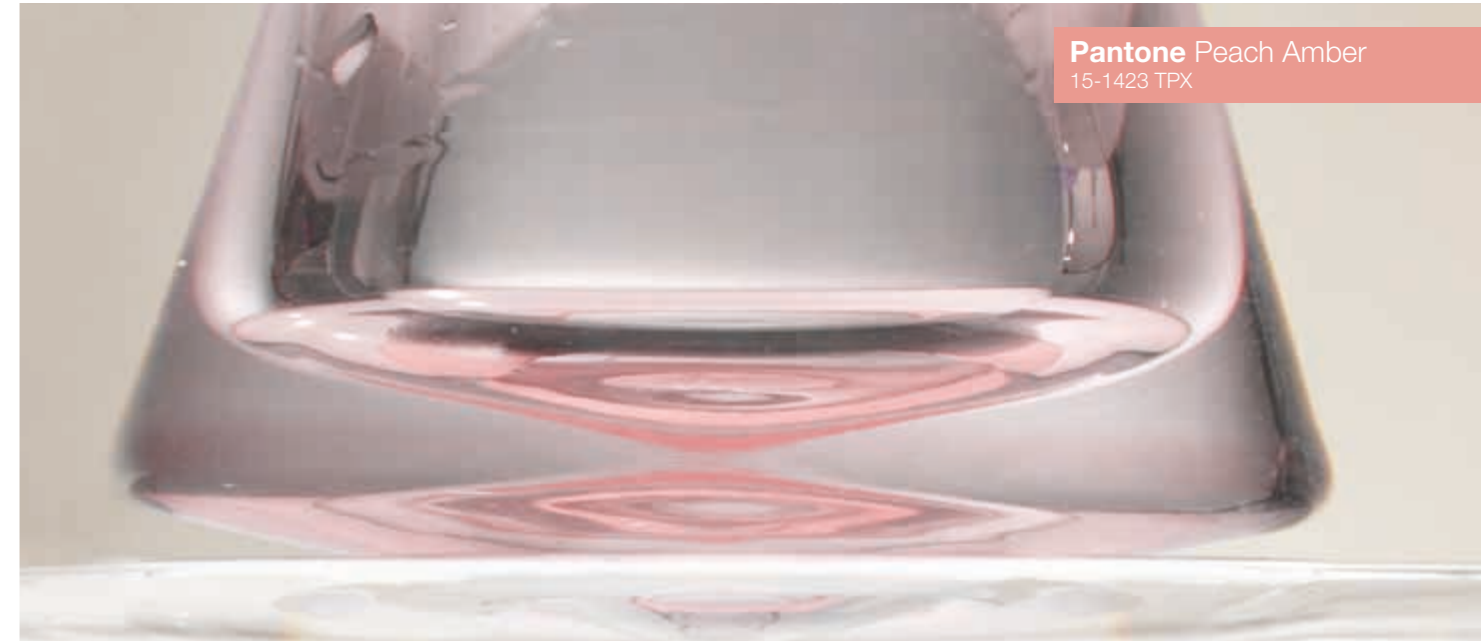
PRESERVING Cocoon



Pantone Emberglow
17-1547 TPX

Highly concentrated, rich serums exude a cushiony feel and skin protection. Their balmy textures coat the face and body to create a sumptuous, comforting cocoon.

AQUA PEARL Sparkle



Pantone Peach Amber
15-1423 TPX

The bubbly effect of oxygenated water gives off an elegant sparkle and iridescence like prismatic light effects. Ideal for eye shadows, nail polishes, and lip glosses. Scientifically enhanced ingredients like electrolyzed or ionized waters and purified oxygen are incorporated into formulations to shield against pollution and allergens.

THE LIGHTNESS of Mousseline

Pantone Pink Lavender
14-3207 TPX

Pantone Almost Mauve
12-2103 TPX



Technologically advanced textures imitate the caress of luxurious silk mousseline. Pastel-tinted translucent layers enhance physical aspects and create barriers against extreme environmental conditions.

OPTIMIZED



Pantone Creampuff
13-1026 TPX

Pantone Marshmallow
11-4300 TPX

Clean, soothing radiance. Nano reflective particles give perfect coverage for an even complexion. Add tints of green or purple to color-correct.

Light, waxy textures delicately coat skin to enhance its natural beauty. Pores are minimized. Skin has a luminous, healthy glow, as vitamin D infusions compensate for the lack of natural sunlight from too much indoor living.



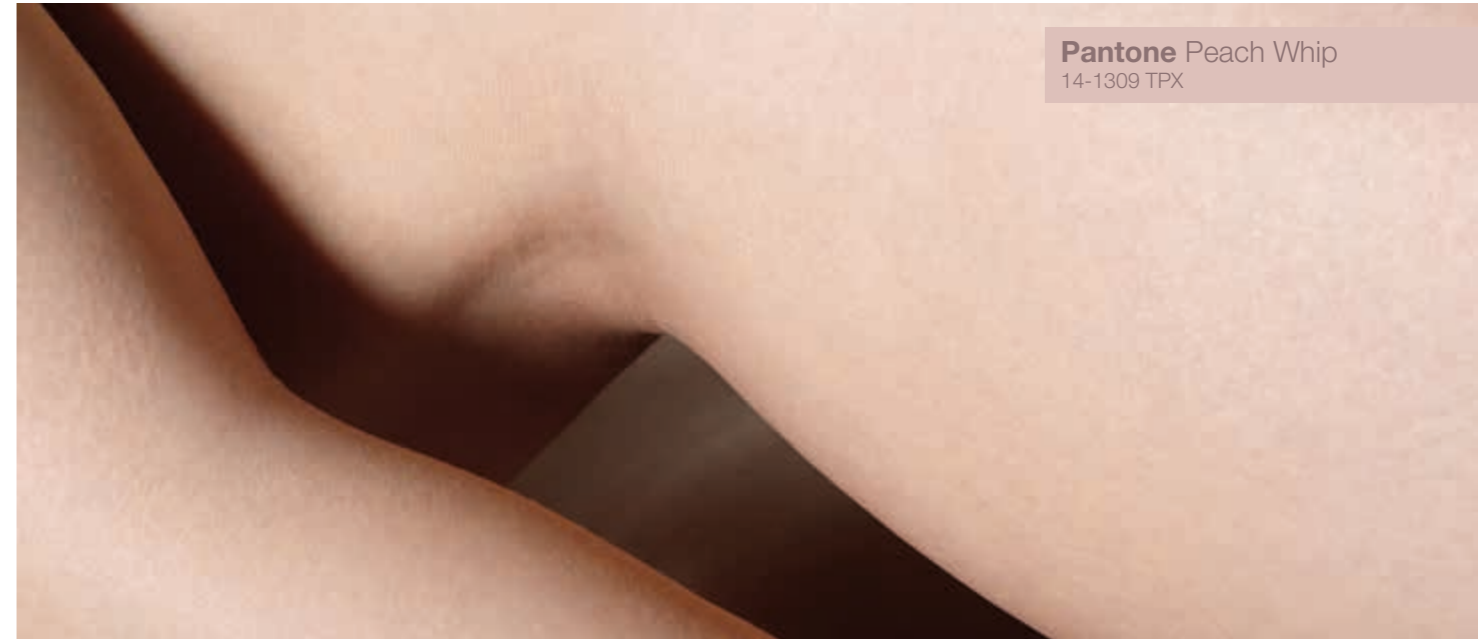
METALLIC
Alchemy



Pantone Light Lilac
12-2903 TPX

Metals take on unexpected aspects in liquid and semitransparent forms.
Nude hues add a feminine, warm dimension.

SECOND Skin Effect



Pantone Peach Whip
14-1309 TPX

Enhanced nudes create supple second skin effects. Luxurious textures are sensuous, soft, and malleable to the touch.

CAPTURED Color

Pantone Wax Yellow
11-0618 TPX



Microcapsules release layers of color that combine and gently mix to create transformative formulations.

HAVEN Colors

Haven takes a surprisingly fresh and feminine approach to skin tones with sensual nudes and light-infused pastel tones.

North America

MAIN INFLUENCER: USA



Europe

MAIN INFLUENCERS: FRANCE AND ITALY



Asia Pacific

MAIN INFLUENCER: SOUTH KOREA



South America

MAIN INFLUENCERS: BRAZIL AND VENEZUELA



Smooth Coverage Mousseline Foundation

CC-FR-12-946-129

PRODUCT OVERVIEW

This ultrasmooth mousse provides enhanced coverage and radiant color through the use of the Timica® Terra line of pigments.

FEATURED EFFECT PIGMENTS

Timica® Terra Colors are absorption pigments that, when blended, provide a range of skin tone shades to create a perfect balance between coverage and luster.

Chione™ M SVA is composed of synthetic mica in combination with lauroyl lysine to enhance the tactile behavior, long-wear properties, and hydrophobicity of cosmetic formulations.



| Ingredients | EMEA | % by weight | Function |
|---|--|-------------|--------------------|
| A Cutina® HR Powder | Hydrogenated Castor Oil | 2.40 | Consistency agent |
| Permalene 400 Polyethylene (Baker Hughes) | Polyethylene | 4.50 | Structurant |
| Lanette® 22 | Behenyl Alcohol | 5.50 | Consistency agent |
| Lameform® TGI | Polyglyceryl-3 Diisostearate | 2.50 | Emollient |
| Myritol® 331 | Cocoglycerides | 8.00 | Emollient |
| Cegesoft® C 24 | Ethylhexyl Palmitate | 5.10 | Emollient |
| Cetiol® C 5C | Coco-Caprylate/Caprata | 20.55 | Emollient |
| KSG-42 A (Shin Etsu Chemical) | Isododecane, Vinyl Dimethicone/Lauryl Dimethicone Crosspolymer | 10.00 | Skin feel modifier |
| B Sepimat P (Seppic) | Polymethyl Methacrylate | 11.00 | Filler |
| Talc Luzenac 00 (Imerys Talc) | Talc | 10.00 | Filler |
| Cellulobeads USF (Daito Kasei Kogyo) | Cellulose | 2.00 | Filler |
| C Timica® Terra White MN4501 | Mica, Titanium Dioxide | 12.00 | Effect pigment |
| Timica® Terra Red MN4506 | Mica, Iron Oxides, Titanium Dioxide | 1.60 | Effect pigment |
| Timica® Terra Yellow MN4502 | Mica, Iron Oxides, Titanium Dioxide | 2.40 | Effect pigment |
| Timica® Terra Black MN4498 | Mica, Iron Oxides, Titanium Dioxide | 0.25 | Effect pigment |
| Chione™ M SVA | Synthetic Fluorhlogopite, Lauroyl Lysine | 1.00 | Skin feel modifier |
| D Hyaluronic Filling Spheres™ C00309 | Ethylhexyl Palmitate, Silica Dimethyl Silylate, Butylene Glycol, Pentylene Glycol, Sodium, Hyaluronate | 1.00 | Active ingredient |
| Perfume | Parfum | 0.20 | Fragrance |

Balmy Eye Shadow – Lilac Frost

CC-FR-15-018-B13

PRODUCT OVERVIEW

These soft eye shadow sticks impart two different effects. Lilac Frost provides a slightly metallic purple shine through the use of Chione™ HD Infinite White.

FEATURED EFFECT PIGMENTS

Chione™ HD Pigments are interference pigments based on synthetic mica substrate with high chroma color. The result is a very clean, bright interference effect.



| | Ingredients | EMEA | % by weight | Function |
|-------------------|---|---|-------------|--------------------|
| A | Performalene 655 (Baker Hughes) | Polyethylene | 2.00 | Structurant |
| | Siliconyl Candelilla (Koster Keunen) | Bis-PEG-12 Dimethicone Candelillate | 8.00 | Structurant |
| | Cirebelle 108 (Cirebelle) | Synthetic Wax | 5.00 | Consistency agent |
| | Cegesoft® VP | Olus Oil, Hydrogenated Vegetable Oil, Euphorbia Cerifera (Candelilla) Wax | 5.00 | Emollient |
| | Cetiol® J 600 | Oleyl Erucate | 5.00 | Emollient |
| | Cetiol® Sensoft | Propylheptyl Caprylate | 15.50 | Emollient |
| | KSG-19 (Shin Etsu Chemical) | Dimethicone, Dimethicone/ Vinyl Dimethicone Crosspolymer | 5.00 | Skin feel modifier |
| | Covi-ox® T 70 C | Tocopherol | 0.10 | Antioxidant |
| | B | Manganese Violet (Sun Chemical) | CI 77742 | 6.00 |
| Eutanol® G | | Octyldodecanol | 8.40 | Emollient |
| C | Cetiol® Ultimate | Undecane, Tridecane | 15.00 | Emollient |
| D | Chione™ HD Infinite White S130V | Synthetic Fluorhlogopite, Titanium Dioxide | 25.00 | Effect pigment |

Balmy Eye Shadow – Pure Rosé

CC-FR-15-018-B14

PRODUCT OVERVIEW

These soft eye shadow sticks impart two different effects. Pure Rosé provides a subtle wash of pink through the use of Gemtone® Radiant Nude and Chione™ HD Metric Violet.

FEATURED EFFECT PIGMENTS

Chione™ HD Pigments are interference pigments based on synthetic mica substrate with high chroma color. The result is a very clean, bright interference effect.

Gemtone® Colors offer a wide range of lustrous colors like precious gems. They derive their color from both light interference and light absorption.

Gemtone® Radiant Nude is the newest addition to the Gemtone® Colors line. It is a small-particle-size, nude skin tone shade effect pigment with excellent chromaticity and lightness.



| | Ingredients | EMEA | % by weight | Function |
|----------|---|---|-------------|--------------------|
| A | Performalene 655 (Baker Hughes) | Polyethylene | 2.00 | Structurant |
| | Siliconyl Candelilla (Koster Keunen) | Bis-PEG-12 Dimethicone Candelillate | 8.00 | Structurant |
| | Cirebelle 108 (Cirebelle) | Synthetic Wax | 5.00 | Consistency agent |
| | Cegesoft® VP | Olus Oil, Hydrogenated Vegetable Oil, Euphorbia Cerifera (Candelilla) Wax | 5.00 | Emollient |
| | Cetiol® J 600 | Oleyl Erucate | 5.00 | Emollient |
| | Cetiol® Sensoft | Propylheptyl Caprylate | 15.50 | Emollient |
| | KSG-19 (Shin Etsu Chemical) | Dimethicone, Dimethicone/Vinyl Dimethicone Crosspolymer | 5.00 | Skin feel modifier |
| | Covi-ox® T 70 C | Tocopherol | 0.10 | Antioxidant |
| B | SunCROMA Titanium Dioxide C47-051 (Sun Chemical) | CI 77891 | 4.50 | Colorant |
| | Manganese Violet (Sun Chemical) | CI 77742 | 1.50 | Colorant |
| | Eutanol® G | Octyldodecanol | 8.40 | Emollient |
| C | Cetiol® Ultimate | Undecane, Tridecane | 15.00 | Emollient |
| D | Chione™ HD Metric Violet S530V | Synthetic Fluorphlogopite, Titanium Dioxide | 16.70 | Effect pigment |
| | Gemtone® Radiant Nude G016 | Bismuth Oxychloride, Mica, Iron Oxides | 8.30 | Effect pigment |

Lip Comfort Trio – Lip Oxygen Peach

CC-US-16-33317-40A

PRODUCT OVERVIEW

The trio of comforting lip products preps, hydrates, and colors your lips for a perfect pout every time. Lip Oxygen comfortably exfoliates the delicate lip area with sugar while using Reflecks™ Dimensions Glittering White and Gemtone® Garnet to provide an effervescent look.

FEATURED EFFECT PIGMENTS

Reflecks™ Dimensions Glittering Pigments take effect-enhancing pigments to new levels of brightness and reflectivity. They have great visual depth and dimensionality that work great with interesting formula textures.

Gemtone® Colors offer a wide range of lustrous colors like precious gems. They derive their color from both light interference and light absorption.



| | Ingredients | EMEA | % by weight | Function |
|----------|---|---|-------------|--------------------|
| A | Performalene 400 Polyethylene (Baker Hughes) | Polyethylene | 6.71 | Structurant |
| | Ozokerite Wax White SP 1020P (Strahl & Pitsch) | Ozokerite | 4.29 | Structurant |
| | Microwax 190 (Frank B. Ross) | Microcrystalline Wax | 1.97 | Structurant |
| | Myritol® 331 | Cocoglycerides | 16.43 | Emollient |
| | Eutanol® G | Octyldodecanol | 10.26 | Emollient |
| | Myritol® 312 | Caprylic/Capric Triglyceride | 5.48 | Emollient |
| | Indopol H-100 (Lipo Chemicals) | Polybutene | 8.88 | Film-forming agent |
| B | KSG-16 (Shin Etsu Chemical) | Dimethicone, Dimethicone/Vinyl Dimethicone Crosspolymer | 8.88 | Skin feel modifier |
| | Dow Corning 9041 Silicone Elastomer Blend (Dow Corning) | Dimethicone, Dimethicone Crosspolymer | 8.88 | Skin feel modifier |
| C | Gransil PSQ (Grant Industries) | Polymethylsilsesquioxane | 2.17 | Skin feel modifier |
| | HDK 2000 (WACKER) | Silica Silylate | 2.17 | Bulking agent |
| D | Reflecks™ Dimensions Glittering Gold G230S | Calcium Sodium Borosilicate, Titanium Dioxide | 1.00 | Effect pigment |
| | Gemtone® Garnet G009 | Mica, Titanium Dioxide, Iron Oxides, Carmine | 0.50 | Effect pigment |
| E | Cosmedia® DC | Hydrogenated Dimer Dilinoleyl/Dimethylcarbonate Copolymer | 1.63 | Film-forming agent |
| F | Sugar | Glucose | 19.70 | Exfoliant |
| | Tinogard® TL | Benzotriazolyl Dodecyl p-Cresol | 0.05 | Light stabilizer |
| | Preservative | | 1.00 | Preservative |

Lip Comfort Trio – Lip Cocoon Coral

CC-US-16-33317-40B

PRODUCT OVERVIEW

The trio of comforting lip products preps, hydrates, and colors your lips for a perfect pout every time. Lip Cocoon uses BASF Care Creations™ UFS to treat and protect lips while providing subtle color enhancement with Gemtone® Garnet.

FEATURED EFFECT PIGMENTS

Gemtone® Colors offer a wide range of lustrous colors like precious gems. They derive their color from both light interference and light absorption.



| | Ingredients | EMEA | % by weight | Function |
|----------|---|--|-------------|--------------------|
| A | Permalene 400 Polyethylene (Baker Hughes) | Polyethylene | 6.71 | Structurant |
| | Ozokerite Wax White SP 1020P (Strahl & Pitsch) | Ozokerite | 4.29 | Structurant |
| | Microwax 190 (Frank B. Ross) | Microcrystalline Wax | 1.97 | Structurant |
| | Myritol® 331 | Cocoglycerides | 16.43 | Emollient |
| | Eutanol® G | Octyldodecanol | 10.26 | Emollient |
| | Myritol® 312 | Caprylic/Capric Triglyceride | 5.48 | Emollient |
| | Indopol H-100 (Lipo Chemicals) | Polybutene | 8.88 | Film-forming agent |
| B | KSG-16 (Shin Etsu Chemical) | Dimethicone, Dimethicone/Vinyl Dimethicone Crosspolymer | 8.88 | Skin feel modifier |
| | Dow Corning 9041 Silicone Elastomer Blend (Dow Corning) | Dimethicone, Dimethicone Crosspolymer | 8.88 | Skin feel modifier |
| C | Gransil PSQ (Grant Industries) | Polymethylsilsesquioxane | 2.17 | Skin feel modifier |
| | HDK 2000 (WACKER) | Silica Silylate | 2.17 | Bulking agent |
| D | Dermol DISM (Alzo International) | Diisostearyl Malate | 9.37 | Emollient |
| | Gemtone® Garnet G009 | Mica, Titanium Dioxide, Iron Oxides, Carmine | 3.95 | Effect pigment |
| E | Cosmedia® DC | Hydrogenated Dimer Dilinoleyl/Dimethylcarbonate Copolymer | 1.63 | Film-forming agent |
| F | Tinogard® TL | Benzotriazolyl Dodecyl p-Cresol | 0.05 | Light stabilizer |
| | Preservative | | 1.00 | Preservative |
| | Ultra Filling Spheres™ C00487 | Ethylhexyl Palmitate, Trihydroxystearin, Sodium Hyaluronate, Amorphophallus Konjac Root Powder | 7.88 | Active ingredient |

Lip Comfort Trio – Lip Enhancement Emberglow

CC-US-16-33317-40C

PRODUCT OVERVIEW

The trio of comforting lip products preps, hydrates, and colors your lips for a perfect pout every time. Lip Enhancement uses Cellini® Coral that offers translucent color for a fresh look.

FEATURED EFFECT PIGMENTS

Cellini® Colors combine clean and intense FDA-approved organic colors with pearlescent effect-enhancing pigments. They offer a novel, luminescent look that provides distinct color.



| Ingredients | EMEA | % by weight | Function |
|---|--|-------------|--------------------|
| A Permalene 400 Polyethylene (Baker Hughes) | Polyethylene | 6.71 | Structurant |
| Ozokerite Wax White SP 1020P (Strahl & Pitsch) | Ozokerite | 4.29 | Structurant |
| Microwax 190 (Frank B. Ross) | Microcrystalline Wax | 1.97 | Structurant |
| Myritol® 331 | Cocoglycerides | 16.43 | Emollient |
| Eutanol® G | Octyldodecanol | 10.26 | Emollient |
| Myritol® 312 | Caprylic/Capric Triglyceride | 5.48 | Emollient |
| Indopol H-100 (Lipo Chemicals) | Polybutene | 8.88 | Film-forming agent |
| B KSG-16 (Shin Etsu Chemical) | Dimethicone, Dimethicone/Vinyl Dimethicone Crosspolymer | 8.88 | Skin feel modifier |
| Dow Corning 9041 Silicone Elastomer Blend (Dow Corning) | Dimethicone, Dimethicone Crosspolymer | 8.88 | Skin feel modifier |
| C Gransil PSQ (Grant Industries) | Polymethylsilsesquioxane | 2.17 | Skin feel modifier |
| HDK 2000 (WACKER) | Silica Silylate | 2.17 | Bulking agent |
| D Dermal DISM (Alzo International) | Diisostearyl Malate | 12.32 | Emollient |
| Cellini® Coral 420CR40F | Mica, Titanium Dioxide, FD&C Red No. 40 Aluminum Lake, Hydrogenated Polyisobutene, Palmitic Acid | 8.88 | Effect pigment |
| E Cosmedia® DC | Hydrogenated Dimer Dilinoleyl/Dimethylcarbonate Copolymer | 1.63 | Film-forming agent |
| F Tinogard® TL | Benzotriazolyl Dodecyl p-Cresol | 0.05 | Light stabilizer |
| Preservative | | 1.00 | Preservative |

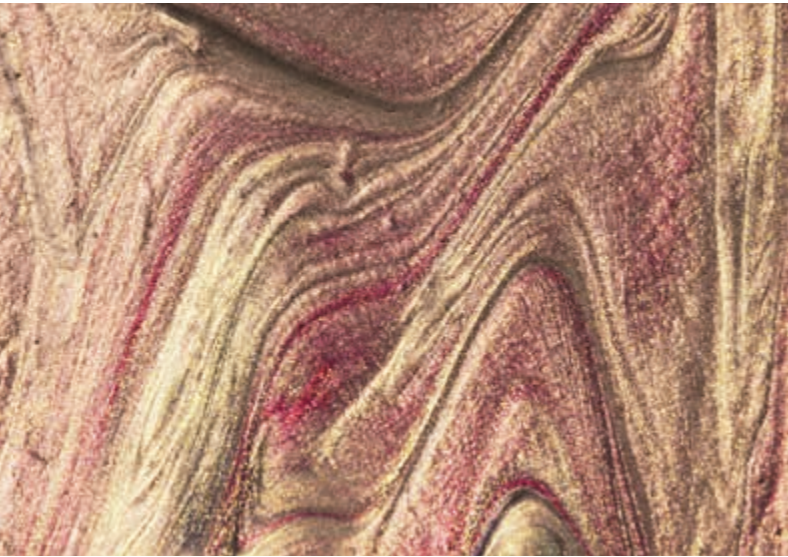
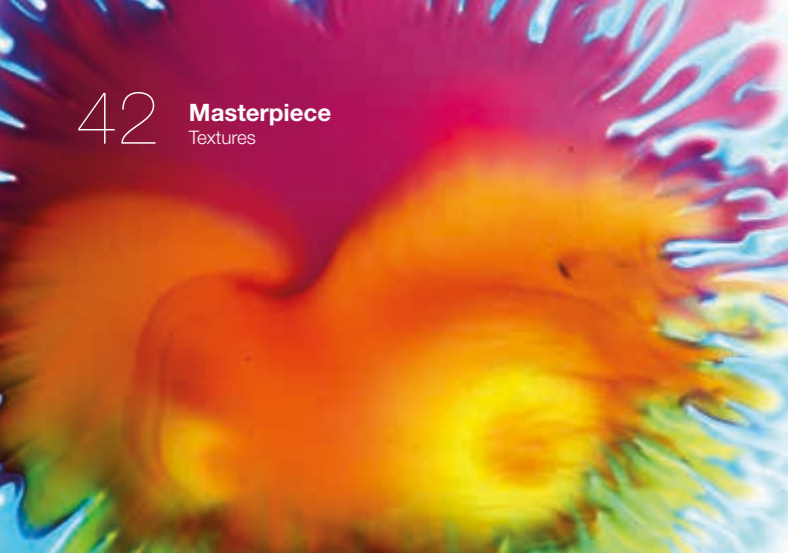
MASTERPIECE

Summer 2019

Masterpiece is a spontaneous meeting of art, nature, and science, curated into surprising textural innovations.

With the myriad of choices available nowadays, curation and personalization emerge as key driving forces. This requires unique combinations customized to each individual.

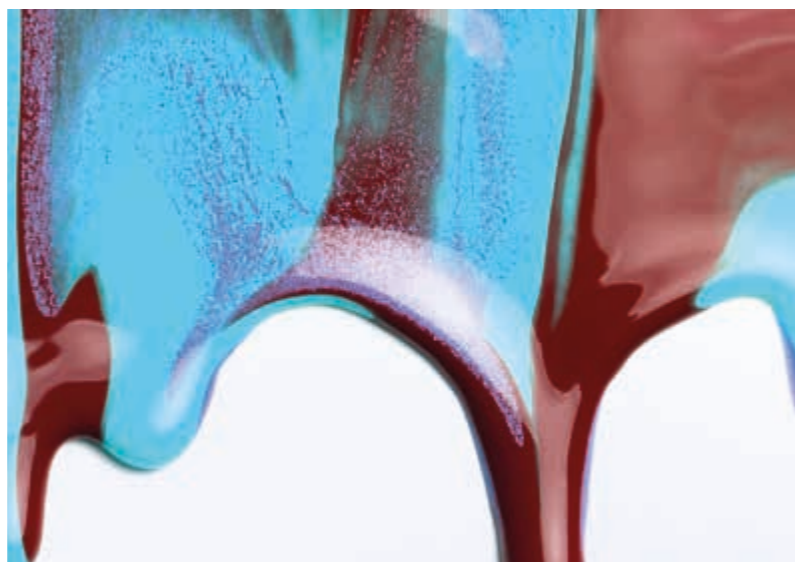
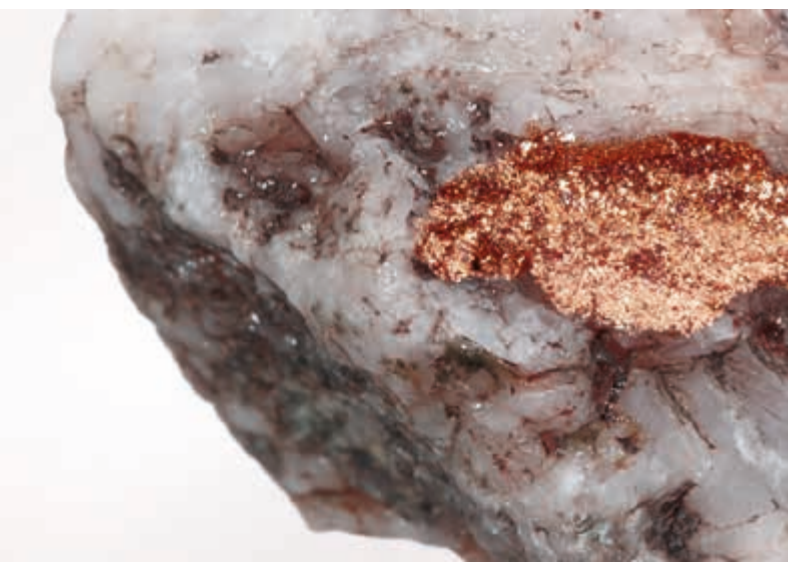
For Spring/Summer 2019, these hybridizations bring us to a unique crossroads between art, nature, and science. These elements come together in surprising blends and contrasts.



MASTERPIECE Textures

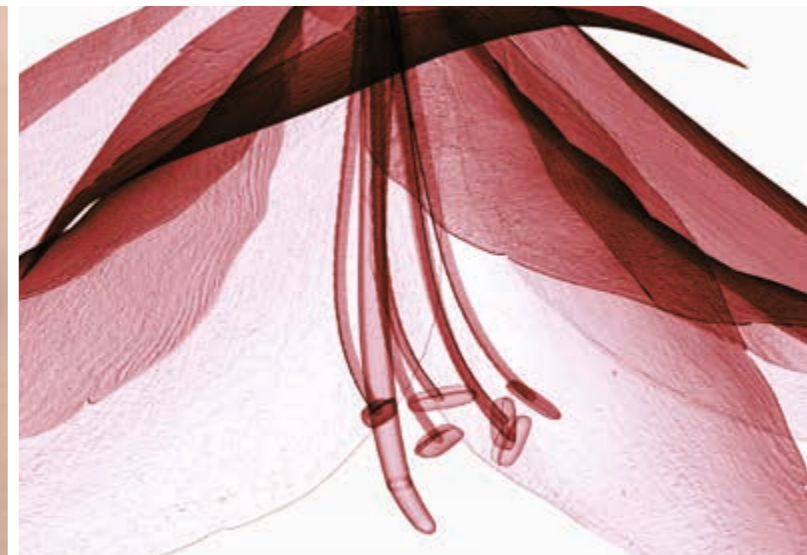
Effect pigments are inspired by natural textures like wood grains, glistening sands, and raw minerals, as well as art materials such as cream paint, glass gel, and ceramic glaze.

Brands are encouraged to experiment and create their own product masterpieces.



MASTERPIECE Concepts

Scientifically advanced components activate natural extracts to multiply efficiency. Minerals and plants are “staged” and viewed as rare pieces of art, elevating them to a precious and exclusive level. Zoomed-in macro views inspire extraordinary makeup textures. Rich formulations invite us to play and mix, generating unexpected combinations.

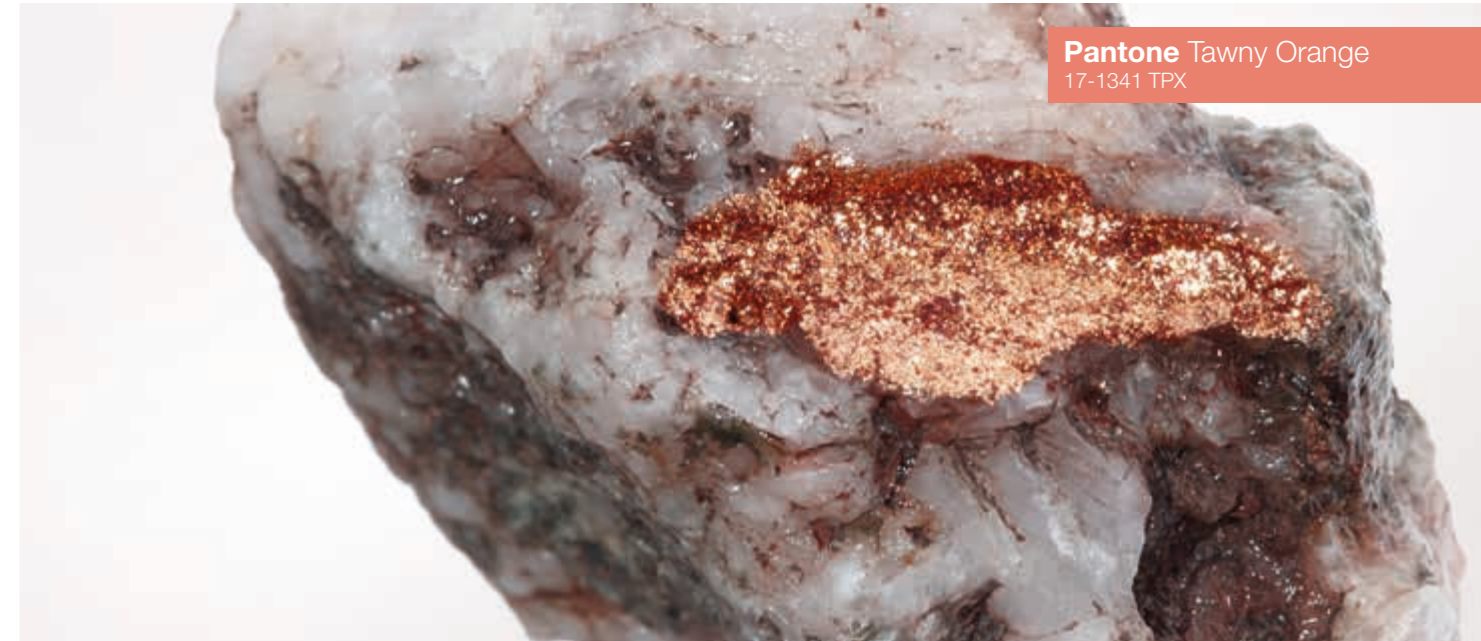


MARBLED
TonesPantone Pale Gold
15-0927 TPX

Perfect imperfection found in nature. Fine tree rings, swirling marble veins, and layered geological segmentations are integrated into exquisite, upscale designs. Organic imperfection is cherished as an expression of character and distinction.



NEWLY
Mined Ore



Pantone Tawny Orange
17-1341 TPX

Sleek, golden mineral sheen is combined with raw matte rock textures for sophisticated golden textural play. For makeup, it gives the impression of the sun sparkling on the face and body.

CERAMIC Glaze Sheen



Pantone Hyacinth Violet
18-3331 TPX

Pantone Cyclamen
16-3118 TPX

Artisanal ceramic glaze techniques inspire luminescent, glossy makeup formulations. The layering, blending, and melting of several colors creates unexpected textural color effects.

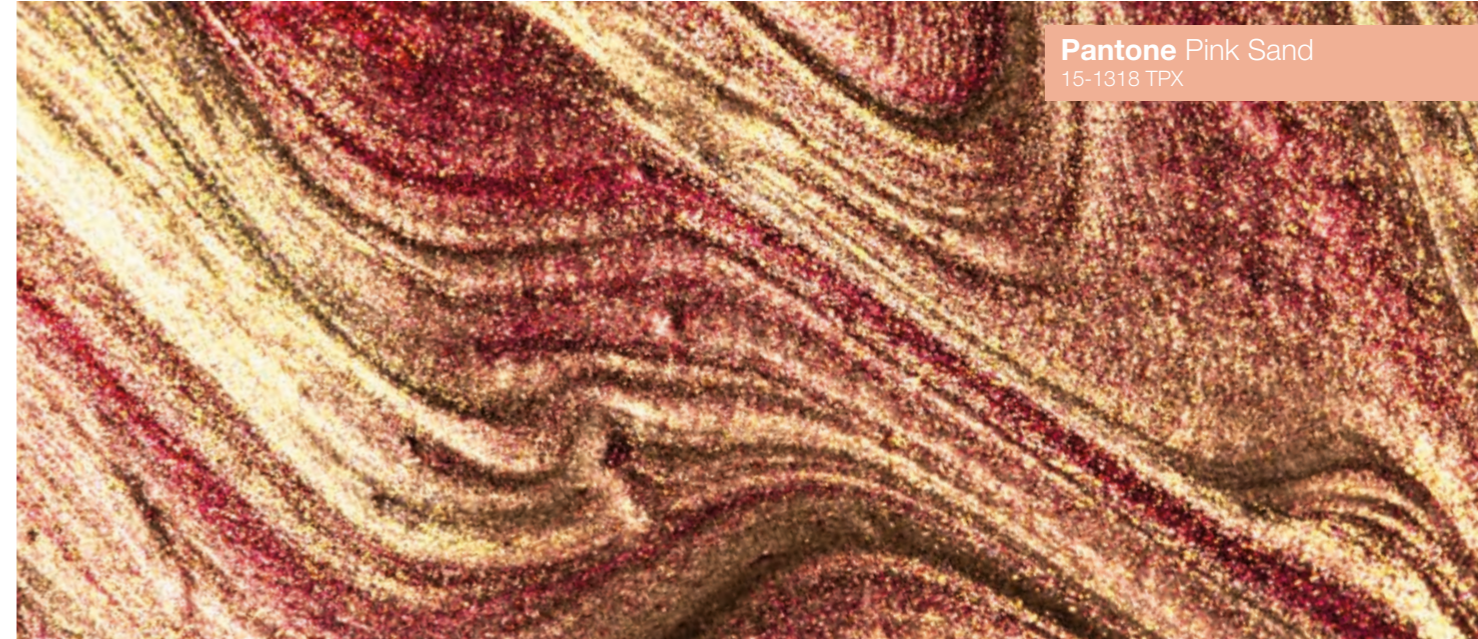
PRECIOUS Extracts



Pantone Chili Pepper
19-1557 TPX

Ingredients are extremely concentrated to activate their natural efficiency.

SUMPTUOUS Sands



Pantone Pink Sand
15-1318 TPX

Looking at the glistening sand through fresh, clear water. The sun creates beautiful sparkle effects that are subtly diffused by the ocean ripples, inspiring sumptuous textural aspects. Beach styling looks exude a sophisticated, nonchalant elegance.

GLASSWORK
Science

Pantone Navigate
17-5025 TPX

Pantone Scuba Blue
16-4725 TPX

Colored gel textures evoke both macro views of nature and elegant Murano art.
A play on color gradations and glassy transparency.

OIL Paint

Pantone Amparo Blue
18-3945 TPX

Oil-based formulations get a colorful twist. Hues are intense and saturated, while natural oils nourish the skin. Textures and formats are inspired by art materials.

MASTERPIECE Colors

Masterpiece plunges us into the beauty of art in nature. Purple-cast blue, teal, and aqua flow alongside golden sand tones and lush floral hues of red, pink, and mauve.

North America

MAIN INFLUENCER: USA



Europe

MAIN INFLUENCERS: FRANCE AND ITALY



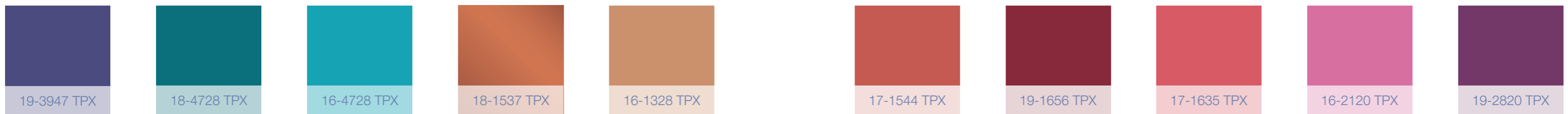
Asia Pacific

MAIN INFLUENCER: SOUTH KOREA



South America

MAIN INFLUENCERS: BRAZIL AND VENEZUELA



Prismatic Glass Mascara – Aqua

CC-FR-14-012-H08

PRODUCT OVERVIEW

Suitable for customization of brows, lashes, and hair, this mascara provides a glass-coat for an enhanced three-dimensional look. Like stained glass, features are elevated through the use of Reflects™ Truly Turquoise, Reflects™ MultiDimensions Transforming Teal, and Flamenco® Summit Aqua.

FEATURED EFFECT PIGMENTS

Reflects™ Colors Pigments formulators can achieve rich metallic effects combined with visual depth and heightened glitter.

Reflects™ MultiDimensions Pigments give cosmetics vibrant life by changing their color as the visual angle of the viewer shifts. These multidimensional effect materials make distinctive color travel effects possible in both color cosmetics and personal care products.

Flamenco® Summit Colors can create dramatic visual effects in all types of cosmetic and personal care products. The turquoise and aqua grades offer formulators exciting expanded color space opportunities. These products possess attributes that create cleaner shades, more saturated color, and stronger angle-dependent interference effects.



| | Ingredients | EMEA | % by weight | Function |
|----------|---|--|-------------|-------------------|
| A | Water, demin. | Water | 83.00 | |
| | Luviskol® K 30 Super P | PVP | 5.00 | Fixative |
| | Euxyl PE 9010 (Schülke) | Phenoxyethanol, Ethylhexylglycerin | 1.00 | Preservative |
| B | Tinovis® GTC UP | Acrylates/Beheneth-25 Methacrylate Copolymer | 2.00 | Rheology modifier |
| C | Reflects™ MultiDimensions Transforming Teal G780D | Calcium Sodium Borosilicate, Silica, Titanium Dioxide | 3.50 | Effect pigment |
| | Reflects™ Truly Turquoise G736L | Calcium Sodium Borosilicate, Titanium Dioxide, Ferric Ferrocyanide | 1.00 | Effect pigment |
| | Flamenco® Summit Aqua A80H | Mica, Titanium Dioxide, Silica | 0.50 | Effect pigment |
| D | Triethanolamine Care | Triethanolamine | 1.00 | pH adjustment |
| E | Ethanol 96% | Alcohol | 3.00 | Solvent |

Lip Glaze Duo – Chili Red Ceramic Stain

CC-US-16-33317-48A

PRODUCT OVERVIEW

These lip glazes either provide high shine and enhanced reflectivity or creamy color with one swipe. The Ceramic Stain gives a creamy full-coverage finish through the use of Cellini® Coral, Flamenco® Summit Aqua and Cloisonné® Vivid Red.

FEATURED EFFECT PIGMENTS

Flamenco® Summit Pigments offer up lustrous interference effects that feature increased chromaticity and high color purity to create dramatic visual effects.

Cellini® Colors combine clean and intense FDA-approved organic colors with pearlescent effect-enhancing pigments. They offer a novel, luminescent look that provides distinct color.

Cloisonné® Colors are effect-enhancing pigments that impart dramatic color and varied pearlescent effects to many types of cosmetics and personal care products. In grades that use an interference base, the colorant is selected to reinforce the reflection color of the interference pigment. The result is a single dramatic reflection/transmission color.



| | Ingredients | EMEA | % by weight | Function |
|----------|--|--|-------------|------------------------|
| A | Oleocraft LP-20 (Croda) | Polyamide-8 | 20.73 | Rheology modifier |
| | Dermol DISM (Alzo International) | Diisostearyl Malate | 7.68 | Emollient |
| | Lameform® TGI | Polyglyceryl-3 Diisostearate | 2.56 | Structurant |
| | Hydrogenated Polyisobutene (Sensient Technologies Corporation) | Hydrogenated Polyisobutene | 20.73 | Water resistance agent |
| B | SunPURO Red Iron Oxide C33-8001 (Sun Chemical) | CI 77491 | 5.40 | Colorant |
| | Dermol DISM (Alzo International) | Diisostearyl Malate | 5.40 | Emollient |
| C | Flamenco® Summit Aqua A80H | Mica, Titanium Dioxide, Silica | 9.00 | Effect pigment |
| | Cloisonné® Vivid Red 450DHCB | Mica, Iron Oxides, Titanium Dioxide, Silica | 1.50 | Effect Pigment |
| | Cellini® Coral 420CR40F | Mica, Titanium Dioxide, FD&C Red No. 40 Aluminum Lake, Hydrogenated Polyisobutene, Palmitic Acid | 0.30 | Effect pigment |
| | Cetiol® C 5 | Coco-Caprylate | 23.71 | Emollient |
| D | Preservative | | 1.00 | Preservative |
| | Uvinul® MC 80 | Ethylhexyl Methoxycinnamate | 1.99 | UV-B filter |

Lip Glaze Duo – Amethyst Glass Gel

CC-US-16-33317-41B

PRODUCT OVERVIEW

These lip glazes either provide high shine and enhanced reflectivity or creamy color with one swipe. The Glass Gel is a new crystal-clear gloss that provides a wash of purple to the lips through the use of Flamenco® Summit Aqua and Cellini® Blue.

FEATURED EFFECT PIGMENTS

Flamenco® Summit Pigments offer up lustrous interference effects that feature increased chromaticity and high color purity to create dramatic visual effects.

Cellini® Colors combine clean and intense FDA-approved organic colors with pearlescent effect-enhancing pigments. They offer a novel, luminescent look that provides distinct color.



| | Ingredients | EMEA | % by weight | Function |
|----------|--|--|-------------|------------------------|
| A | Oleocraft LP-20 (Croda) | Polyamide-8 | 20.73 | Rheology modifier |
| | Dermol DISM (Alzo International) | Diisostearyl Malate | 7.68 | Emollient |
| | Lameform® TGI | Polyglyceryl-3 Diisostearate | 2.56 | Structurant |
| | Hydrogenated Polyisobutene (Sensient Technologies Corporation) | Hydrogenated Polyisobutene | 20.73 | Water resistance agent |
| B | Cetiol® C 5 | Coco-Caprylate | 10.36 | Emollient |
| | Versagel M 750 (Calumet Penreco) | Mineral Oil, Ethylene/Propylene/Styrene Copolymer, Butylene/Ethylene/Styrene Copolymer | 9.80 | Rheology modifier |
| | Indopol H-100 (Ineos Oligomers) | Polybutene | 21.15 | Emollient |
| C | Flamenco® Summit Aqua A80H | Mica, Titanium Dioxide, Silica | 1.35 | Effect pigment |
| | Cellini® Red 420CR7F | Mica, Titanium Dioxide, D&C Red No. 7 Calcium Lake, Hydrogenated Polyisobutene, Palmitic Acid | 1.00 | Effect pigment |
| | Cellini® Blue 620CB1C | Mica, Titanium Dioxide, FD&C Blue No. 1 Aluminum Lake, Hydrogenated Polyisobutene, Palmitic Acid | 0.15 | Effect pigment |
| | Cetiol® C 5 | Coco-Caprylate | 1.50 | Emollient |
| D | Preservative | | 1.00 | Preservative |
| | Uvinul® MC 80 | Ethylhexyl Methoxycinnamate | 1.99 | UV-B filter |

Glistening Sands Palette

PRODUCT OVERVIEW

This sparkling metallic set of powders creates custom looks for eyes, cheeks, and the whole face.

FEATURED EFFECT PIGMENTS

The new **Reflecks™ Brilliant Series, in Gold, Copper, and Bronze**, provides exceptional luster in cosmetics applications. The Bronze and Copper shades offer clean, brilliant, and metallic colors that elevate cosmetics.

Gemtone® Radiant Nude is the newest addition to the Gemtone® Colors line. It is a small-particle-size, nude skin tone shade effect pigment with excellent chromaticity and lightness.



Glistening Sands Palette – Gold

CC-FR-17-026-B01

| | Ingredients | EMEA | % by weight | Function |
|----------|--|---|-------------|---------------------|
| A | Powder Base | | 33.00 | Base |
| | Mearlmica® CF | Mica | 12.00 | Performance mineral |
| B | Timica® Pearlwhite 110A | Mica, Titanium Dioxide | 14.00 | Effect pigment |
| | Cloisonné® Satin Bronze 250M | Mica, Iron Oxides | 10.00 | Effect pigment |
| | Gemtone® Amber G001 | Mica, Titanium Dioxide, Iron Oxides | 6.00 | Effect pigment |
| | Timica® Terra Yellow MN4502 | Mica, Iron Oxides, Titanium Dioxide | 4.55 | Effect pigment |
| | Timica® Terra White MN4501 | Mica, Titanium Dioxide | 2.34 | Effect pigment |
| | Timica® Terra Red MN4506 | Mica, Iron Oxides, Titanium Dioxide | 2.07 | Effect pigment |
| | Timica® Terra Black MN4498 | Mica, Iron Oxides, Titanium Dioxide | 1.04 | Effect pigment |
| | Reflecks™ Dimensions Brilliant Gold GY80D | Calcium Sodium Borosilicate, Titanium Dioxide, Silica | 15.00 | Effect pigment |

Glistening Sands Palette – Bronze

CC-FR-17-026-B02

| Ingredients | EMEA | % by weight | Function |
|---|---|-------------|---------------------|
| A Powder Base | | 32.00 | Base |
| Mearlmica® CF | Mica | 10.00 | Performance mineral |
| B Timica® Brilliant Gold 212G | Mica, Titanium Dioxide, Iron Oxides | 29.50 | Effect pigment |
| Cloisonné® Sparkle Copper 350J | Mica, Iron Oxides | 14.70 | Effect pigment |
| Timica® Pearlwhite 110A | Mica, Titanium Dioxide | 6.70 | Effect pigment |
| Cloisonné® Satin Bronze 250M | Mica, Iron Oxides | 1.10 | Effect pigment |
| Chroma-Lite® Black CL4498 | Mica, Bismuth Oxychloride, Iron Oxides | 1.00 | Effect pigment |
| Reflecks™ Dimensions Brilliant Bronze GB90D | Calcium Sodium Borosilicate, Iron Oxide, Titanium Dioxide, Silica | 5.00 | Effect pigment |

Glistening Sands Palette – Nude

CC-FR-17-026-B04

| Ingredients | EMEA | % by weight | Function |
|-------------------------------------|--|-------------|---------------------|
| A Powder Base | | 31.00 | Base |
| Mearlmica® CF | Mica | 12.00 | Performance mineral |
| B Gemtone® Radiant Nude G016 | Bismuth Oxychloride, Mica, Iron Oxides | 57.00 | Effect pigment |

Glistening Sands Palette – Copper

CC-FR-17-026-B03

| Ingredients | EMEA | % by weight | Function |
|--|---|-------------|---------------------|
| A Powder Base | | 35.00 | Base |
| Mearlmica® CF | Mica | 12.00 | Performance mineral |
| B Carmine (Sensient Technologies Corporation) | CI 75470 | 2.40 | Colorant |
| SunCROMA Ultramarine Blue C43-1810 (Sun Chemical) | CI 77007 | 1.50 | Colorant |
| C Timica® Pearlwhite 110A | Mica, Titanium Dioxide | 18.20 | Effect pigment |
| Timica® Brilliant Gold 212G | Mica, Titanium Dioxide, Iron Oxides | 9.20 | Effect pigment |
| Chroma-Lite® Red CL4506 | Mica, Bismuth Oxychloride, Iron Oxides | 8.90 | Effect pigment |
| Timica® Terra Red MN4506 | Mica, Iron Oxides, Titanium Dioxide | 3.60 | Effect pigment |
| Timica® Terra Yellow MN4502 | Mica, Iron Oxides, Titanium Dioxide | 0.75 | Effect pigment |
| Timica® Terra Black MN4498 | Mica, Iron Oxides, Titanium Dioxide | 0.05 | Effect pigment |
| Reflecks™ Dimensions Brilliant Copper GC90D | Calcium Sodium Borosilicate, Iron Oxide, Titanium Dioxide, Silica | 8.40 | Effect pigment |

Manufacturing Process

SMOOTH COVERAGE MOUSSELINE FOUNDATION

CC-FR-12-946-129

1. Heat Phase A to 90°C ±5°C, while medium-speed mixing until uniform.
2. While maintaining temperature, add Phase B to Phase A.
3. While maintaining temperature, increase to high-speed mixing and add Phase C to Phase AB.
4. While maintaining temperature, add Phase D to Phase ABC.
5. Pour into components at 35°C ±5°C.

BALMY EYE SHADOW – LILAC FROST

CC-FR-15-018-B13

BALMY EYE SHADOW – PURE ROSÉ

CC-FR-15-018-B14

1. Heat Phase A to 100°C ±5°C, while medium-speed mixing until uniform.
2. Prepare Phase B colorants by dispersing in Eutanol® G via colloid or roller mill.
3. Cool Phase A to 80°C ±5°C, add Phase B to Phase A while medium-speed mixing until uniform.
4. While maintaining temperature, add Phase C to Phase AB while medium-speed mixing until uniform.
5. While maintaining temperature, add Phase D to Phase ABC while medium-speed mixing until uniform.
6. While maintaining temperature, pour sticks and fill components.

LIP COMFORT TRIO – LIP OXYGEN PEACH

CC-US-16-33317-40A

LIP COMFORT TRIO – LIP COCOON CORAL

CC-US-16-33317-40B

LIP COMFORT TRIO – LIP ENHANCEMENT EMBERGLOW

CC-US-16-33317-40C

1. Heat phase A to 85°C ±5°C, while medium-speed mixing until uniform.
2. While maintaining temperature, add Phase B to Phase A while medium-speed mixing until uniform.
3. While maintaining temperature, add Phase C to Phase AB while medium-speed mixing until uniform.
4. While maintaining temperature, add Phase D to Phase ABC while medium-speed mixing until uniform.
5. While maintaining temperature, add Phase E to Phase ABCD while medium-speed mixing until uniform.
6. While maintaining temperature, add Phase F to Phase ABCDE while medium-speed mixing until uniform.
7. While maintaining temperature, pour components and fill components.

PRISMATIC GLASS MASCARA – AQUA

CC-FR-14-012-H08

1. In main kettle, slowly disperse Luviskol® K30 Super P into remaining Phase A ingredients while medium-speed mixing until uniform.
2. Add Phase B to Phase A while medium-speed mixing until uniform.
3. Add Phase C to Phase AB while medium-speed mixing until uniform.
4. Add Phase D TEA to Phase ABC for neutralization until pH of 8 is obtained.
5. Add Phase E to Phase ABCD while medium-speed mixing until uniform.
6. Fill components.

LIP GLAZE DUO – CHILI RED CERAMIC STAIN

CC-US-16-33317-48A

LIP GLAZE DUO – AMETHYST GLASS GEL

CC-US-16-33317-41B

1. In the main kettle, heat Oleocraft LP-20 to 90°C ± 5°C until completely melted. Begin medium speed mixing.
2. Add remaining ingredients in Phase A, waiting in between additions, until totally clear and uniform.
3. Reduce temperature to 80°C ± 5°C.
4. Slowly add Phase B ingredients to Phase A, waiting in between additions, until totally clear and uniform.
5. In a side container, pre-mix Phase C ingredients, mix until semi-clear and uniform.
6. While maintaining temperature, add Phase C to Phase AB.
7. In a side container, pre-mix Phase D ingredients.
8. While maintaining temperature, add Phase D to Phase ABC.
9. Pour components.

Always ahead of time.
Stay in touch with
BASF Colors & Effects.



Contacts

North America

BASF Colors & Effects USA LLC
24710 West Eleven Mile Road
Southfield, MI 48034
USA

South America

BASF S/A
Av. das Nações Unidas, 14171
Crystal Tower 11th floor,
Morumbi 04538-132, São Paulo
Brazil

Asia Pacific

BASF Colors & Effects Shanghai Ltd.
No 300, Jiang Xin Sha Road
200137 Shanghai
China

Europe

BASF Colors & Effects GmbH
An der Rheinschanze 1
67059 Ludwigshafen
Germany

Visit our website: www.colors-effects.basf.com

The data contained in this publication are based on our current knowledge and experience. In view of the many factors that may affect processing and application of our product, these data do not relieve processors from carrying out their own investigations and tests; neither do these data imply any guarantee of certain properties, nor the suitability of the product for a specific purpose. Any descriptions, drawings, photographs, data, proportions, weights, etc. given herein may change without prior information and do not constitute the agreed contractual quality of the product. The agreed contractual quality of the product results exclusively from the statements made in the product specification. It is the responsibility of the recipient of our products to ensure that any proprietary rights and existing laws and legislation are observed. When handling these products, advice and information given in the safety data sheet must be complied with. Further, protective and workplace hygiene measures adequate for handling chemicals must be observed. (03/2016)

© = Registered trademark of BASF SE