

Credential & Used Products **Assorted Footwear Grade A**

Mixture Consists of:

- **6 Sports (7-12)**
4 Adult Sports
2 Junior Sports
- **4 Men**
3 Men
1 Sandal
- **10 Children's**
5 Girls
5 Boys
- **25 Ladies**
12 Closed (6 High, 6 Low)
13 Open (7 high, 6 Low)

- **Approx. 50 lbs Per Bag**
- **725 Bag Per 40' HC Container**
- **Average 40' HC Container is Approx. 36,250 lbs**
- **Selling \$1.95 Per lb**



Credential & Used Products **Assorted Footwear Grade B**

Mixture Consists of:

- **6 Sports (7-12)**
4 Adult Sports
2 Junior Sports
- **4 Men**
3 Men
1 Sandal
12 Children's
6 Girls
6 Boys
- **25 Ladies**
12 Closed (6 High, 6 Low)
13 Open (7 high, 6 Low)

- **Approx. 50 lbs Per Bag**
- **Maximum Size For Men 11.5/US**
- **Maximum Size For Ladies 10/US**
- **750 Bag Per 40' HC Container**
- **Average 40' HC Container is Approx. 37,500 lbs**
- **Selling \$1.25 Per lb**



Credential & Used Products **Assorted Footwear Grade Mixed A & B**

Mixture Consists of:

- **6 Sports (7-12)**
4 Adult Sports
2 Junior Sports
- **4 Men**
3 Men
1 Sandal
- **10 Children's**
5 Girls
5 Boys
- **25 Ladies**
12 Closed (6 High, 6 Low)
13 Open (7 high, 6 Low)

- **Approx. 50 lbs Per Bag**
- **725 Bag Per 40' HC Container**
- **Average 40' HC Container is Approx. 36,250 lbs**
- **Selling \$1.50 Per lb**



Credential & Used Products

Credential Footwear

Mixture Consists of:

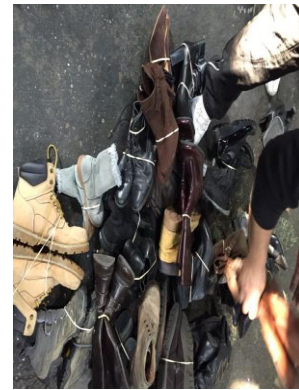
- **Unsorted, Untouched Shoes As It Comes From Donors**
- **Packaged in Big Cap Sacks 310 lb per Sack.**
- **Usually You Can Find Cream, Premium, A,B,C Shoes And Unusable**
- **Singles Average About 5% to 12%**
- **128 Cap Sacks per 40' HC Container**
- **Average Container Weight Is 38,000 lbs**
- **Selling \$1.15 Per lb**



Credential & Used Products **Mixed Winter Footwear Grade A**

Mixture Consists of:

- **Grade A Winter Footwear**
- **Assorted of Men, Women, & Children Footwear**
- **Average Weight Per Bag is Approx. 45 lbs**
- **750 Bags Per 40' HC Container**
- **Average Container Weight is 34,000 lbs**
- **Selling \$1.25 Per lb**



Credential & Used Products

Assorted Brand Name Sport/Sneakers Washed Grade A

Mixture Consists of:

- **25 Pairs In a Bag Sizes 7.5-11**
- **Assorted Men's, Women's, & Juniors**
- **All Paired-No Singles**
- **725 Bags per 40' HC Container**
- **Selling \$8.95 Per Pair**



Credential & Used Products
**Assorted Brand Name Sport/Sneakers Washed
Grade B**

Mixture Consists of:

- **25 Pairs In The Bag Sizes 7.5-11**
- **Assorted Men's, Women's, And Juniors**
- **All Paired-No Singles**
- **725 Bags per 40' HC Container**
- **Selling \$7.00 Per Pair**



Credential & Used Products **Assorted Work Boots**

Mixture Consists of:

- **Grade A and B**
- **17 Boots in a bag**
- **Average Weight Per Bag is 45 lbs**
- **Selling \$2.25 Per lb**



Credential & Used Products **Assorted Cow Boy Boots**

Mixture Consists of:

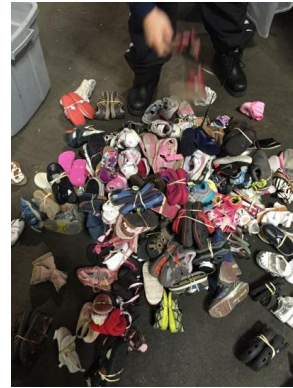
- **A Mixture of Men & Women**
- **20 Pairs Per Bag**
- **Capacity 25 Bags Per Order**
- **Selling \$9.50 Per Pair**



Credential & Used Products **Baby Infant Footwear**

Mixture Consists of:

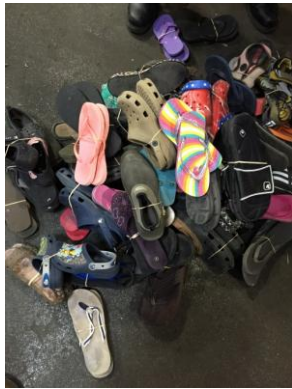
- **A Mixture of Grade Baby Infant Footwear**
- **Average weight Per Bag is 45 lbs**
- **Sizes From 0 to 24 Months**
- **Capacity 15 to 25 Bags Per Order**
- **Selling \$2.75 Per lb.**



Credential & Used Products **Men's & Women's Slippers**

Mixture Consists of:

- **A Mixture of Men's & Women's Slippers**
- **Average Weight Per Bag is 37 lbs.**
- **Capacity 50 Bags Per Order**
- **Selling \$1.45 Per lb**

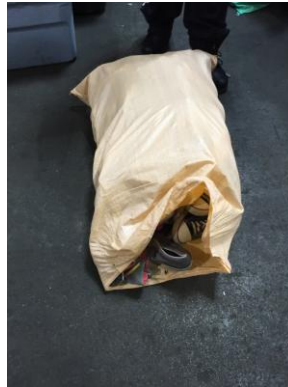


Credential & Used Products

Men's, Women's, & Children's Canvas Footwear

Mixture Consists of:

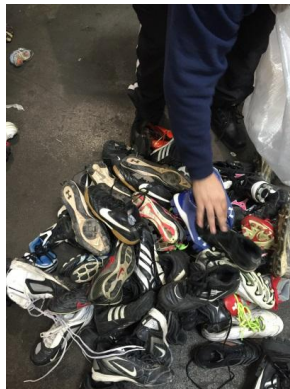
- **A Mixture of Men's, Women's, & Children's Canvas**
- **Average Weight Per Bag 55 lbs**
- **Capacity 50 Bags Per Order**
- **Selling \$1.15 Per lb**



Credential & Used Products **Assorted Cleat Footwear**

Mixture Consists of:

- **A Mixture of Cleat Footwear**
- **Cleat shoes of Soccer & Baseball Shoes**
- **Mixed Grade A & B No Waste or Damages**
- **Average Weight Per Bag is 50 lbs**
- **Capacity 25 Bags Per Order**
- **Selling \$2.75 Per lb**



Credential & Used Products **Assorted Hand Bags & Purses**

Mixture Consists of:

- **Wallets, Purses, Handbags, & School Bags**
- **Each Bail Contains 5 School Bags in Each Bail The Rest is Purses and Wallets**
- **Average Weight Per Bag is 100 lbs**
- **444 Bails Per 40' HC Container**
- **Selling \$0.95 Per lb**



Credential & Used Products **Assorted Hard Toys In Small Boxes**

Mixture Consists of:

- **Assorted Brand Name Toys**
- **Average Weight Per Container is 22,000 lbs**
- **610 Boxes Per 40' HC Container**
- **Selling \$0.85 Per lb**



Credential & Used Products

Assorted Soft Toys In Big Cap Sacks or Bails

Mixture Consists of:

- **Average Weight Per Cap Sack is 150 lbs**
- **128 Cap Sacks Per 40' HC Container**
- **Average Weight Per 40' HC Container Approx. 20,000 lbs**
- **Also We Have:**
- **Soft Toys Bails & Wrapped**
- **44 Bails in a 40' HC Container Average Weight Per 40' Container is Approx. 30,000 lbs**
- **Selling \$0.40 Per lb**



Credential & Used Products **Assorted Bric-a-Brac in Small Boxes**

Mixture Consists of:

- **No Electronic, No broken, No Incomplete**
- **Boxes Are Mixed With Glass & Plastic, Decoration Items, Pots & Pans, Silverware, Kitchen Items, and Housewares**
- **Average Weight Per Box is 40 lbs**
- **610 Boxes Per 40' HC Container**
- **Average Weight Per 40' HC Container is Approx. is 25,000 lbs**
- **Selling \$0.45 Per lb**



Credential & Used Products **Assorted Domestics & Linens**

Mixture Consists of:

- **Assortment of Linens, Sheets, Blankets, Towels, Comforters, Pillows, and More**
- **Boxes Are Mixed With Glass & Plastic, Decoration Items, Pots & Pans, Silverware, Kitchen Items, and Housewares**
- **Average Weight Per Bail is 900 lbs**
- **44 Bails Per 40' HC Container**
- **Average Weight Per 40' HC Container is Approx. is 40,000 lbs**
- **Selling \$0.40 Per lb**



Credential & Used Products

Credential Clothing

Mixture Consists of:

- **Untouched, Unsorted Clothing as Received from Donors**
- **Average Weight Per Bail is Approx. 1000 lbs**
- **44 Bails Per 40' HC Container**
- **Average Weight Per 40' HC Container Approx. 44,000 lbs**
- **Selling \$0.39 Per lb**



Credential & Used Products **Used Clothing Grade A**

Mixture Consists of:

- **Assorted of Men's & Women's Clothing**
- **Summer or Winter Available**
- **Approx. 100 lbs Per Bail**
- **450 Bails Per 40' HC Container**
- **Average 40' HC Container is Approx. 45,000 lbs**
- **Selling \$1.10 Per lb. Container Price**

