

# 2019 Tacoma



 Let's  
Go  
Places



# Wherever. Whenever.

---

With the 2019 Toyota Tacoma, there's no such thing as an average weekend. Backed by Toyota's legendary heritage of toughness, this pickup truck is ready for a day of scrambling over dirt, charging through mud or taking on those not-so-small, epic weekend projects. Tacoma's powerful, available V6, rugged chassis and smart off-road<sup>50</sup> tech help this truck go places others fear to tread. And with standard Toyota Safety Sense™ P (TSS-P),<sup>19</sup> Tacoma brings peace of mind to those on-road excursions too. So wherever your weekend takes you, you can bet that Tacoma has your back.

**TRD Off-Road Double Cab** shown in Cement with available Premium and Technology Packages and mudguards. Prototype shown with options.

See numbered footnotes in Disclosures section.



—  
“The real fun starts where the trail ends.  
Let’s do this!”  
—



# Rugged good looks that go wherever you go.

Whether freshly waxed, coated in dust or caked in mud, Tacoma's good looks impress from every angle. Up front, its aggressive grille and available hood scoop hint at the power that lies under the hood. The strong profile reveals chiseled lines, muscular fenders and a purposeful off-road stance. Out back, a tailgate embossed with the Tacoma logo finishes off this truck's athletic look.



## PROJECTOR-BEAM HEADLIGHTS

Let's light it up. Standard projector-beam headlights shine brightly, helping you get a better nighttime view of the road ahead.



## EASY LOWER TAILGATE

The easy lower tailgate opens smoothly, is easily removed when needed and can be locked to help keep your gear secure.<sup>45</sup>



## REAR COMBINATION TAILLIGHTS

Smoked taillights give TRD Off-Road and TRD Sport a bold touch. And on Limited, these lights feature clear lenses to add just the right amount of sophistication.

AGGRESSIVE STYLING



TRD Off-Road Double Cab shown in Cement with available Premium and Technology Packages. Prototype shown with options.

# The power to play harder.

When the adventures get bigger, so do the toys. Good thing Tacoma's got the brawn to help bring them all with you. When equipped with the available 3.5-liter V6, which includes a standard Tow Package, this truck can tow up to 6800 lbs.<sup>37</sup> And the 4-/7-pin connector sits cleanly inside the three-piece bumper, helping you haul things out without hitting any snags.

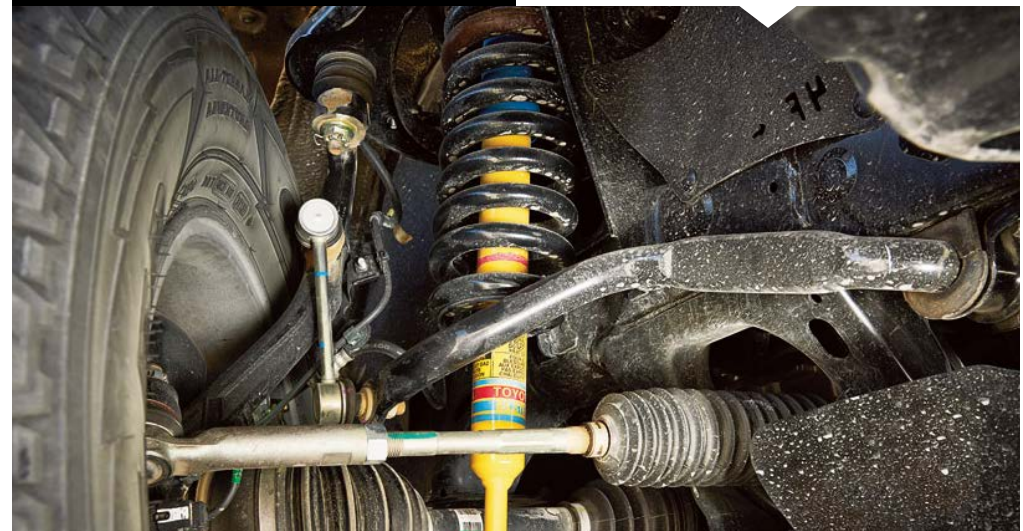


### 3.5L V6 DIRECT-INJECTION ENGINE

Tacoma's available 3.5-liter DOHC V6 direct-injection Atkinson-cycle engine gives you more of everything you want. It's got 278 hp and 265 lb.-ft. of torque, giving you the muscle you need to tow, haul and run the dunes. It's also more efficient, helping the engine get better mpg too.

### BILSTEIN<sup>®41</sup> SHOCKS

Available Bilstein<sup>®</sup> shocks know how to keep their cool under pressure, delivering consistent performance when the going gets rough. Standard on TRD Off-Road, these shocks help soak up the impacts of the trail, thanks to high-performance components and valving tuned specifically for off-road<sup>50</sup> driving.



PERFORMANCE AND TOWING



**TRD Off-Road Double Cab** shown in Cement with available Premium and Technology Packages and mudguards. Prototype shown with options.

See footnotes 37 and 45 in Disclosures section for more information on towing and payload.

# Obstacles don't stand a chance.

This is where the rubber meets the dirt. With available equipment like an electronically locking rear differential, Crawl Control (CRAWL)<sup>35</sup> and Multi-terrain Select, Tacoma is ready to help you take on difficult terrain. We're talking the same legendary capability that has helped make Toyota king of the off-road,<sup>50</sup> wrapped in one rugged, advanced package. So when the trail gets tough, this truck's got the guts to keep things going.



## LOCKING REAR DIFFERENTIAL

TRD Off-Road models come with a standard electronically controlled locking rear differential, which distributes engine power evenly to both rear wheels so they move at the same speed, providing more grip in low-traction conditions.



## CRAWL CONTROL (CRAWL)<sup>35</sup>

This available advanced system automatically modulates the throttle and brakes on five low-speed settings so you can keep your focus on steering through difficult terrain.



## MULTI-TERRAIN SELECT

With five modes to choose from, the available Multi-terrain Select system regulates wheelspin by automatically adjusting the engine throttle and brakes, helping improve traction.



OFF-ROAD CAPABILITY



**TRD Off-Road Double Cab** shown in Quicksand with available Premium and Technology Packages and mudguards.<sup>50</sup> Prototype shown with options.


See numbered footnotes in Disclosures section.



# TRD PRO

TRD Pro Double Cab shown in Super White with available Desert Air Intake.<sup>51</sup>

See numbered footnotes in Disclosures section.



TRD PRO SERIES

#### TRD PRO SERIES SKID PLATE

A unique TRD Pro skid plate comes standard on Tacoma TRD Pro. Constructed from ¼-in.-thick aluminum, this piece of armor helps protect crucial mechanical components underneath the front end, so you can even go beyond points on the map.

#### OTHER INTERIOR ACCENTS

The interior features unique TRD Pro floor mats<sup>16</sup> and a leather-wrapped shifter with a TRD shift knob. With its red contrast stitching, embossed TRD logo and bright chrome accent ring, taking control never looked — or felt — so good.

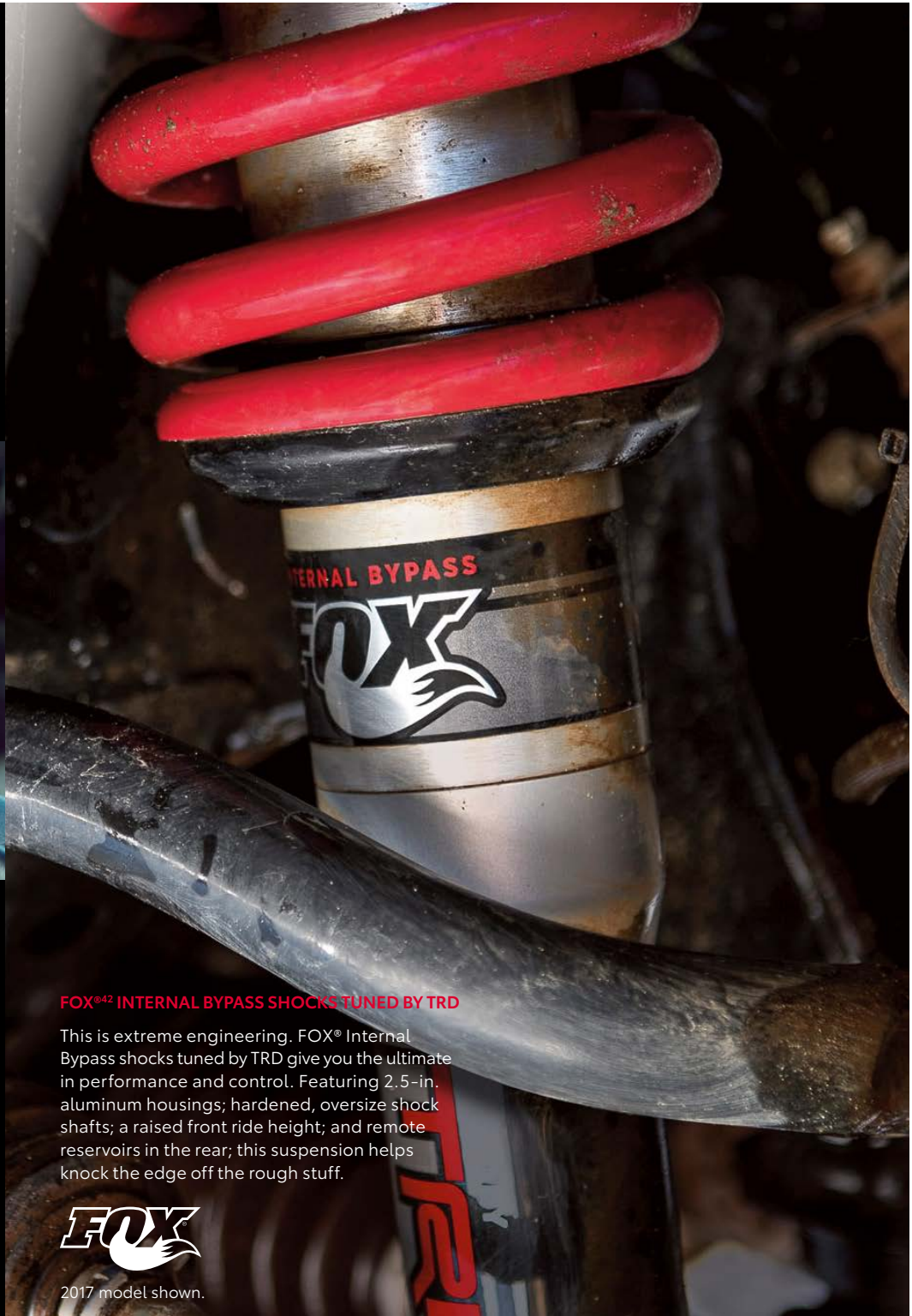


#### LEATHER-TRIMMED SEATS

Hard-core comfort. Heated, leather-trimmed seats help keep you warm when you're charging through the snowy wilderness. And with TRD Pro logos embossed on the headrests, this truck's interior is the most stylish cabin on the mountain.



See numbered footnotes in Disclosures section.



#### FOX<sup>®42</sup> INTERNAL BYPASS SHOCKS TUNED BY TRD

This is extreme engineering. FOX<sup>®</sup> Internal Bypass shocks tuned by TRD give you the ultimate in performance and control. Featuring 2.5-in. aluminum housings; hardened, oversize shock shafts; a raised front ride height; and remote reservoirs in the rear; this suspension helps knock the edge off the rough stuff.



2017 model shown.

# TRD PRO

## Leaves limits in its dust.

Designed by the gurus at Toyota Racing Development (TRD), the 2019 Toyota Tacoma TRD Pro is built to take on the world's gnarliest terrain. The stuff you want — like a TRD-tuned suspension with 2.5-in. FOX<sup>®42</sup> Internal Bypass shocks, a ¼-in.-thick aluminum skid plate and Rigid Industries<sup>®</sup> fog lights — all comes standard. A mandrel-bent TRD exhaust and available TRD Pro Desert Air Intake<sup>51</sup> help optimize engine performance too. It's the same proven capability that's helped the TRD Pro Series deliver its unique brand of fun everywhere from the scorching desert to the Arctic Circle, and it's ready for your next big adventure. Things are about to get a lot more epic. Let's get dirty.



TRD Pro Double Cab shown in Super White with available Desert Air Intake.<sup>51</sup>

See numbered footnotes in Disclosures section.

# What is TRD?

Toyota Racing Development (TRD) is Toyota's factory-backed racing division. While TRD USA has been building go-fast parts for Toyotas since 1979, our racing legacy traces back well over two decades before that. With a history rich in motorsports, TRD engineers have continued to apply their knowledge to help enthusiasts get more performance from their vehicles, while maintaining factory levels of quality and reliability. Our TRD Pro Series vehicles are factory-tuned and built to take you way off-road.<sup>50</sup> No off-the-shelf components here; our engineers spend countless hours designing, testing and tuning with passion. And with capability this exciting, they will help fuel your passion too.

## ACCESSORIES

You know your Tacoma is supremely capable right out of the box. But when you want to crank up the attitude, turn to those who know your truck best. Toyota Racing Development (TRD) brings you a line of accessories engineered just for your Tacoma. Each and every part is designed to give you maximum performance with proven dependability. And it's all available from your local Toyota dealer. All you have to do is pick out which parts are right for you.

## OTHER TRD PERFORMANCE PARTS AND ACCESSORIES

- TRD 16-in. off-road beadlock-style alloy wheel
- TRD oil cap
- TRD performance air filter
- TRD performance air intake
- TRD performance exhaust system
- TRD performance oil filter
- TRD radiator cap
- TRD shift knob (A/T)
- TRD shift knob (M/T)

See numbered footnotes in Disclosures section.



## TRD EXHAUST

The bark to match the powerful V6 bite. This cat-back exhaust is constructed from 304 stainless steel, and its precise CNC mandrel bends help maximize efficiency. Helping finish off the package is a chrome-plated, dual-walled tip with embossed TRD logo.

## RIGID INDUSTRIES® LED FOG LIGHTS

These intense LED fog lights pack a lot of brightness into a compact package. Rugged construction and a wide-angle beam pattern help ensure you have light when, and where, you need it.



## TRD PRO DESERT AIR INTAKE<sup>51</sup>

Breathe easier. Designed by TRD, this snorkel-style air intake places an air inlet high above Tacoma's windshield. This intake draws cool, fresh air from high above the dustline, helping prevent excess dirt from getting into the engine.

# The comforts of base camp, wherever you go.

More than a command center, Tacoma's cabin is the ultimate hangout. Its clean layout and intuitive controls were designed with the driver in mind, and the soft-touch materials used throughout help everyone relax in style. Tacoma Off-Road grade brings even more good stuff, with features like available leather-trimmed seating surfaces and dual zone automatic climate control. And with room for up to five, Tacoma makes it easy to bring the whole crew along for the ride.



## MOONROOF

Open up to the elements. An available power moonroof helps bring the outside in, giving you everything from a cool breeze to an epic view of the stars.

## MULTI-INFORMATION DISPLAY (MID)

The available 4.2-in. color Multi-Information Display (MID) can be customized to show info like your Toyota Safety Sense™ P (TSS-P)<sup>19</sup> features, current mpg, inclinometer, and available Multi-terrain Select setting.



INTERIOR



TRD Off-Road Double Cab interior shown in Black leather trim with available Premium and Technology Packages. Prototype shown with options.

# It's capable on the inside too.

Your location may be remote, but Tacoma's tech helps keep you connected. The available Entune™ Premium JBL®<sup>15</sup> Audio with Integrated Navigation<sup>13</sup> and Entune® App Suite<sup>14</sup> keeps you in tune with your music, phone book and more. Siri® Eyes Free<sup>8</sup> technology lets you access your compatible Apple®<sup>52</sup> device using only your voice.



## TWO USB CHARGE PORTS<sup>5</sup>

Plug in your smartphone or other compatible device to stay charged up while on the go.



## INTEGRATED BACKUP CAMERA<sup>53</sup>

When backing up on a trail — or just backing out of your driveway — you need to see what's behind you. The standard backup camera, mounted in the tailgate handle, helps you see an image of what the camera detects behind you on the audio display.



## AVAILABLE POWER REAR WINDOW

Let the outside in. Tacoma's available power sliding rear window with privacy glass opens with just the touch of a button.



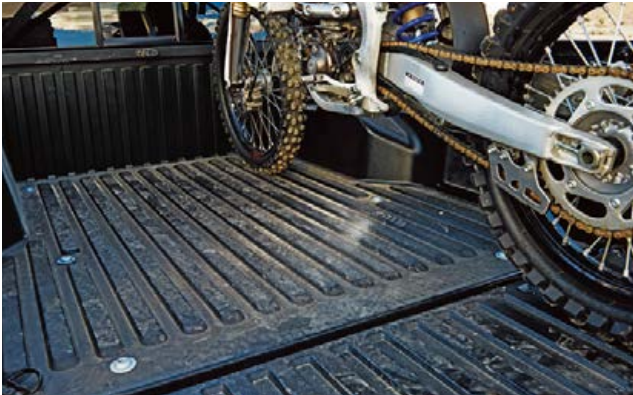
INTERIOR TECHNOLOGIES



TRD Off-Road Double Cab interior shown in Black leather trim with available Premium and Technology Packages. Prototype shown with options.

# Leave nothing behind.

Tacoma's standard composite bed surface is built to withstand the bumps, impacts and scuffs of your high-octane weekend. Its integrated heavy-duty deck rail system offers lots of adjustment, making it easy to tie down gear of all sizes. Now, when action calls, you'll be ready to go.



## COMPOSITE BED

Tacoma's bed is comprised of an ultra-durable, fiber-reinforced Sheet-Molded Composite (SMC) surface.<sup>45</sup> This material boasts a greater impact strength than steel and will help keep the bed of your truck looking good for years to come.



## 120V<sup>2</sup>/400W POWER OUTLET

The available bed-mounted 120V/400W AC outlet helps you keep the action powered up, even when you've left civilization in your dust.



## DECK RAIL SYSTEM

It's easy to strap down your gear.<sup>45</sup> The standard deck rail system features C-channel frames and four heavy-duty adjustable tie-down cleats, giving you the strength you need to keep your cargo secure.

UTILITY

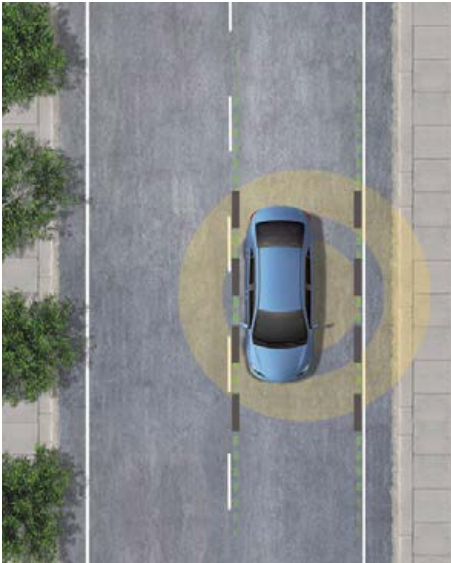


**TRD Sport Double Cab** shown in Cavalry Blue with available Premium and Technology Packages and mudguards. Prototype shown with options.



# High-tech backup for the road ahead.

Toyota Safety Sense™ P (TSS-P)<sup>19</sup> is an active safety package that comes standard on every new Toyota Tacoma. This advanced precautionary safety system combines the Pre-Collision System<sup>20</sup> with Pedestrian Detection<sup>21</sup> (PCS w/PD), Lane Departure Alert (LDA)<sup>22</sup> with Sway Warning System (SWS),<sup>23</sup> Automatic High Beams (AHB)<sup>24</sup> and Dynamic Radar Cruise Control (DRCC)<sup>25</sup> to assist you. TSS-P's comprehensive features create in-the-moment safety designed to support your awareness and decision-making on the road.



## LANE DEPARTURE ALERT (LDA)<sup>22</sup> WITH SWAY WARNING SYSTEM (SWS)<sup>23</sup>

Under certain circumstances, Lane Departure Alert (LDA) with Sway Warning System (SWS) is designed to detect lane departure on roads with visible lane markings. LDA only activates when you're traveling at a speed of 32 mph or faster. When you hear and see the alert, after carefully checking the road around you, you should safely direct your vehicle back to the center of your lane.



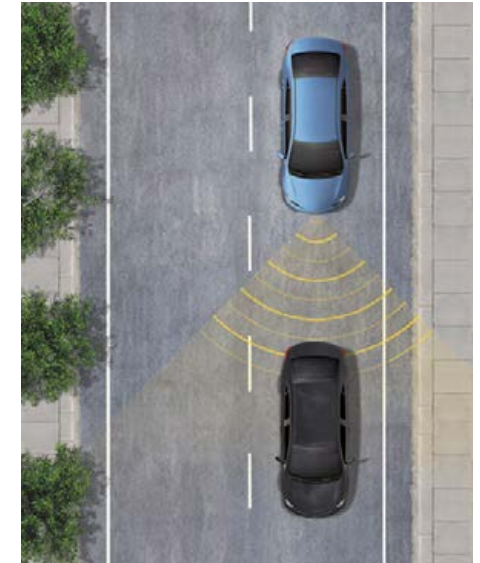
## AUTOMATIC HIGH BEAMS (AHB)<sup>24</sup>

Automatic High Beams (AHB) are a safety system designed to help you see more clearly at night — without distracting other drivers. Designed to activate at speeds above 25 mph, AHB rely on an in-vehicle camera to help detect the headlights of oncoming vehicles and taillights of preceding vehicles, then automatically toggle between high and low beams accordingly to provide the appropriate amount of light. By using high beams more frequently, the system may allow earlier detection of pedestrians and obstacles.



## PRE-COLLISION SYSTEM<sup>20</sup> WITH PEDESTRIAN DETECTION<sup>21</sup> (PCS w/PD)

Using an in-vehicle camera and radar to help detect a vehicle or a pedestrian in front of you, the Pre-Collision System with Pedestrian Detection (PCS w/PD) can help you mitigate or avoid a potential collision. If the system determines that a frontal collision is likely, it prompts you to take action using audio and visual alerts. If you notice the potential collision and apply the brakes, PCS w/PD may apply additional force using Brake Assist (BA).<sup>27</sup> If you don't brake in time, it may automatically apply the brakes to reduce your speed, helping to minimize the likelihood of a frontal collision or reduce its severity.



## DYNAMIC RADAR CRUISE CONTROL (DRCC)<sup>25</sup>

Intended for highway use and similar to "constant speed" cruise control, Dynamic Radar Cruise Control (DRCC) lets you drive at a preset speed. DRCC uses vehicle-to-vehicle distance control, which adjusts your speed, to help you maintain a preset distance from vehicles ahead of you that are driving at a slower speed. DRCC uses a front-grille-mounted radar and an in-vehicle camera designed to detect vehicles and their distance. If a driver is traveling slower than you, or within your preset range, DRCC will automatically slow your vehicle down without deactivating cruise control. If DRCC determines you need to slow down more, an audio and visual alert notifies you and brakes are applied. When there's no longer a vehicle driving slower than your set speed in front of you, DRCC will then accelerate to the preset speed.

# Color



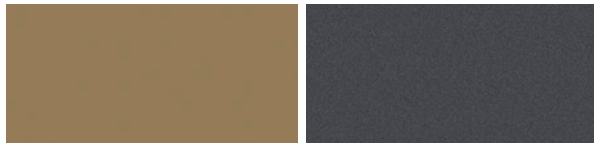
Midnight Black Metallic

Cavalry Blue



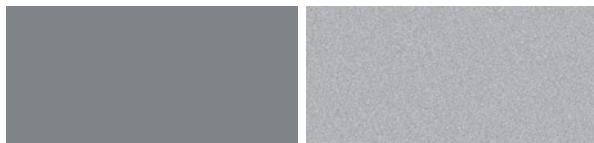
Voodoo Blue

Barcelona Red Metallic



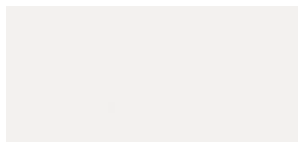
Quicksand

Magnetic Gray Metallic



Cement

Silver Sky Metallic



Super White

# Trim



SR and SR5 fabric in Cement Gray

SR5 fabric in Black with caramel accent stitching



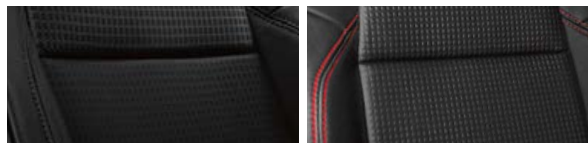
SR5 fabric in Black with red accent stitching

Limited leather trim in Hickory (also available in Black)



TRD Sport and TRD Off-Road fabric in Graphite

TRD Sport and TRD Off-Road fabric in Black with orange accent stitching



TRD Sport and TRD Off-Road leather trim in Black

TRD Pro leather trim in Black with red accent stitching

# Wheels



16-in. styled steel wheel



16-in. black alloy wheel



16-in. silver alloy wheel



17-in. machined alloy wheel



16-in. machined contrast alloy wheel



18-in. polished alloy wheel



16-in. TRD Pro black alloy wheel

## TACOMA MODELS



# SR

Available in Access Cab and Double Cab

### Drivetrain/Powertrain

- 2.7-Liter DOHC 16-Valve 4-Cylinder with VVT-i; 159 hp @ 5200 rpm; 180 lb.-ft. @ 3800 rpm; 6-speed automatic transmission
- 3.5-Liter DOHC V6 direct-injection Atkinson-cycle with 278 hp @ 6000 rpm; 265 lb.-ft. @ 4600 rpm; 6-speed automatic transmission
- Rear-Wheel Drive (RWD) or 4WDemand part-time 4WD
- V6 Tow Package<sup>37</sup>
- Automatic Limited-Slip Differential (Auto LSD)<sup>40</sup>
- Hill Start Assist Control (HAC)<sup>36</sup>

### Exterior Features

- Dark gray grille with black surround
- 16-in. styled steel wheels
- Projector-beam headlights with turn Daytime Running Lights (DRL)
- Color-keyed heated power outside mirrors
- Color-keyed rear bumper
- Integrated color-keyed tailgate spoiler
- Engine/front suspension skid plate
- Deck rail system
- Sliding rear window with privacy glass
- Fiber-reinforced Sheet-Molded Composite (SMC) bed

### Interior Features

- Entune™ Audio
- Bluetooth®<sup>97</sup> wireless technology
- Three total USB ports:<sup>5</sup> one USB media port, two USB charge ports
- Integrated backup camera<sup>53</sup>
- 4.2-in. LCD odometer/tripmeter
- Power windows and door locks
- Tire Pressure Monitor System (TPMS)<sup>31</sup>

### Safety/Convenience

- Toyota Safety Sense™ P (TSS-P)<sup>19</sup> includes:
  - Pre-Collision System<sup>20</sup> with Pedestrian Detection<sup>21</sup> (PCS w/PD)
  - Lane Departure Alert (LDA)<sup>22</sup> with Sway Warning System (SWS)<sup>23</sup>
  - Automatic High Beams (AHB)<sup>24</sup>
  - Dynamic Radar Cruise Control (DRCC)<sup>25</sup>
- Star Safety System™

### Options and Packages

- Utility Package includes:
  - Adds black door handles, mirror caps and bumper, and fixed rear window
  - Removes rear seats and rear cup holders
- SR Convenience Package includes:
  - Remote keyless entry
- SX Package includes:
  - 16-in. black alloy wheels
  - Black overfenders, mirror caps and door handles



# SR5

Available in Access Cab and Double Cab

### Drivetrain/Powertrain

- 2.7-Liter DOHC 16-Valve 4-Cylinder with VVT-i; 159 hp @ 5200 rpm; 180 lb.-ft. @ 3800 rpm; 6-speed automatic transmission
- 3.5-Liter DOHC V6 direct-injection Atkinson-cycle with 278 hp @ 6000 rpm; 265 lb.-ft. @ 4600 rpm; 6-speed automatic transmission
- Rear-Wheel Drive (RWD) or 4WDemand part-time 4WD
- V6 Tow Package<sup>37</sup>
- Automatic Limited-Slip Differential (Auto LSD)<sup>40</sup>
- Hill Start Assist Control (HAC)<sup>36</sup>

### Exterior Features

- Charcoal grille with chrome surround
- 16-in. silver alloy wheels
- Projector-beam headlights with turn Daytime Running Lights (DRL) and integrated fog lights
- Chrome rear bumper
- Variable intermittent windshield wipers

### Interior Features

- Entune™ Audio Plus
- Bluetooth®<sup>97</sup> wireless technology
- Three total USB ports:<sup>5</sup> one USB media port, two USB charge ports
- Integrated backup camera<sup>53</sup>
- 4.2-in. color Multi-Information Display (MID)
- Leather-trimmed tilt/telescopic steering wheel
- Remote keyless entry
- Tire Pressure Monitor System (TPMS)<sup>31</sup> with individual tire location alert
- Power sliding rear window with privacy glass (V6 Double Cab only)

### Safety/Convenience

- Toyota Safety Sense™ P (TSS-P)<sup>19</sup> includes:
  - Pre-Collision System<sup>20</sup> with Pedestrian Detection<sup>21</sup> (PCS w/PD)
  - Lane Departure Alert (LDA)<sup>22</sup> with Sway Warning System (SWS)<sup>23</sup>
  - Automatic High Beams (AHB)<sup>24</sup>
  - Dynamic Radar Cruise Control (DRCC)<sup>25</sup>
- Star Safety System™

### Options and Packages

- Mudguards (require SR5 Appearance Package on 4-cylinder)
- SR5 Appearance Package (4-cylinder) includes:
  - 16-in. silver alloy wheels
  - Color-keyed overfenders
- 16-in. black alloy wheels
- Parking Sonar<sup>34</sup> and Navigation<sup>13</sup> Package includes:
  - Entune™ Premium Audio with Integrated Navigation<sup>13</sup> and Entune® App Suite<sup>14</sup> (V6 only)
  - Rear parking assist sonar<sup>34</sup> (V6 only)



# TRD Sport

Available in Access Cab and Double Cab

### Drivetrain/Powertrain

- 3.5-Liter DOHC V6 direct-injection Atkinson-cycle with 278 hp @ 6000 rpm; 265 lb.-ft. @ 4600 rpm; 6-speed manual transmission or 6-speed automatic transmission
- Rear-Wheel Drive (RWD) or 4WDemand part-time 4WD
- V6 Tow Package<sup>37</sup>
- Automatic Limited-Slip Differential (Auto LSD)<sup>40</sup>
- Hill Start Assist Control (HAC)<sup>36</sup> (A/T only)

### Exterior Features

- Gray grille with smoked finish and chrome surround
- 17-in. machined alloy wheels
- Projector-beam headlights with LED Daytime Running Lights (DRL) and integrated wide-angle fog lights
- Color-keyed overfenders and rear bumper
- 120V<sup>2</sup>/400W in-deck AC power outlet

### Interior Features

- Entune™ Premium Audio with Integrated Navigation<sup>13</sup> and Entune® App Suite<sup>14</sup>
- Bluetooth®<sup>97</sup> wireless technology
- Three total USB ports:<sup>5</sup> one USB media port, two USB charge ports
- Integrated backup camera<sup>53</sup>
- 4.2-in. color Multi-Information Display (MID)
- Smart Key System<sup>17</sup> with Push Button Start
- Qi-compatible wireless smartphone charging<sup>4</sup>
- Leather-trimmed shift lever
- Power sliding rear window with privacy glass (Double Cab only)

### Safety/Convenience

- Toyota Safety Sense™ P (TSS-P)<sup>19</sup> includes:
  - Pre-Collision System<sup>20</sup> with Pedestrian Detection<sup>21</sup> (PCS w/PD)
  - Lane Departure Alert (LDA)<sup>22</sup> with Sway Warning System (SWS)<sup>23</sup>
  - Automatic High Beams (AHB)<sup>24</sup>
  - Dynamic Radar Cruise Control (DRCC)<sup>25</sup>
- Star Safety System™

### Options and Packages

- Mudguards
- Premium Package (Access Cab) includes:
  - Dual zone automatic climate control
  - Heated front seats
  - Auto headlights
- Premium Package (Double Cab) includes:
  - Dual zone automatic climate control
  - Leather-trimmed heated front seats
  - Entune™ Premium JBL®<sup>15</sup> Audio (A/T only) with Integrated Navigation<sup>13</sup> and Entune® App Suite<sup>14</sup>
  - Auto headlights
  - Moonroof
- Technology Package<sup>54</sup> includes:
  - Rear parking assist sonar<sup>34</sup>
  - Blind Spot Monitor (BSM)<sup>32</sup> with Rear Cross-Traffic Alert (RCTA)<sup>33</sup>

## TACOMA MODELS



# TRD Off-Road

Available in Access Cab and Double Cab

### Drivetrain/Powertrain

- 3.5-Liter DOHC V6 direct-injection Atkinson-cycle with 278 hp @ 6000 rpm; 265 lb.-ft. @ 4600 rpm; 6-speed manual transmission or 6-speed automatic transmission
- Rear-Wheel Drive (RWD) or 4WD Demand part-time 4WD
- V6 Tow Package<sup>37</sup>
- Hill Start Assist Control (HAC)<sup>36</sup> (A/T only)

### Off-Road Performance

- Off-road-tuned suspension with Bilstein<sup>®41</sup> shocks
- Electronically controlled locking rear differential
- Multi-terrain Select and Crawl Control (CRAWL)<sup>35</sup> (4x4 A/T only)
- Active Traction Control (A-TRAC) (4x4 M/T only)

### Exterior Features

- Black overfenders
- Chrome rear bumper
- 16-in. machined contrast alloy wheels

### Interior Features

- Entune™ Premium Audio with Integrated Navigation<sup>13</sup> and Entune® App Suite<sup>14</sup>
- Bluetooth<sup>®7</sup> wireless technology
- Three total USB ports:<sup>5</sup> one USB media port, two USB charge ports
- Integrated backup camera<sup>53</sup>
- 4.2-in. color Multi-Information Display (MID)
- Power sliding rear window with privacy glass (Double Cab only)

### Safety/Convenience

- Toyota Safety Sense™ P (TSS-P)<sup>19</sup> includes:
  - Pre-Collision System<sup>20</sup> with Pedestrian Detection<sup>21</sup> (PCS w/PD)
  - Lane Departure Alert (LDA)<sup>22</sup> with Sway Warning System (SWS)<sup>23</sup>
  - Automatic High Beams (AHB)<sup>24</sup>
  - Dynamic Radar Cruise Control (DRCC)<sup>25</sup>
- Star Safety System™

### Options and Packages

- Mudguards
- Premium Package (Access Cab) includes:
  - Dual zone automatic climate control
  - Heated front seats
  - Auto headlights
- Premium Package (Double Cab) includes:
  - Dual zone automatic climate control
  - Leather-trimmed heated front seats
  - Entune™ Premium JBL<sup>®15</sup> Audio (A/T only) with Integrated Navigation<sup>13</sup> and Entune® App Suite<sup>14</sup>
  - Auto headlights
  - Moonroof
- Technology Package<sup>54</sup> includes:
  - Rear parking assist sonar<sup>34</sup>
  - Blind Spot Monitor (BSM)<sup>32</sup> with Rear Cross-Traffic Alert (RCTA)<sup>33</sup>

See numbered footnotes in Disclosures section.

For additional information on TRD Pro, please visit [toyota.com/tacoma](http://toyota.com/tacoma).



# Limited

Available in Double Cab

### Drivetrain/Powertrain

- 3.5-Liter DOHC V6 direct-injection Atkinson-cycle with 278 hp @ 6000 rpm; 265 lb.-ft. @ 4600 rpm; 6-speed automatic transmission
- Rear-Wheel Drive (RWD) or 4WD Demand part-time 4WD
- V6 Tow Package<sup>37</sup>
- Automatic Limited-Slip Differential (Auto LSD)<sup>40</sup>
- Hill Start Assist Control (HAC)<sup>36</sup>

### Exterior Features

- Silver grille with chrome surround
- Chrome-accented heated power outside mirrors with turn signal indicators
- Chrome-accented door handles
- Color-keyed overfenders and rear bumper
- Chrome rear bumper
- 18-in. polished alloy wheels
- Integrated fog lights and chrome bezels
- Power tilt/slide moonroof
- Rear parking assist sonar<sup>34</sup>

### Interior Features

- Entune™ Premium JBL<sup>®15</sup> Audio with Integrated Navigation<sup>13</sup> and Entune® App Suite<sup>14</sup>
- Bluetooth<sup>®7</sup> wireless technology
- Three total USB ports:<sup>5</sup> one USB media port, two USB charge ports
- Integrated backup camera<sup>53</sup>
- 4.2-in. color Multi-Information Display (MID)
- Leather-trimmed seats
- Dual zone automatic climate control
- Power sliding rear window with privacy glass
- Auto-dimming day/night rearview mirror and HomeLink<sup>®18</sup> universal transceiver
- Auto headlights

### Safety/Convenience

- Toyota Safety Sense™ P (TSS-P)<sup>19</sup> includes:
  - Pre-Collision System<sup>20</sup> with Pedestrian Detection<sup>21</sup> (PCS w/PD)
  - Lane Departure Alert (LDA)<sup>22</sup> with Sway Warning System (SWS)<sup>23</sup>
  - Automatic High Beams (AHB)<sup>24</sup>
  - Dynamic Radar Cruise Control (DRCC)<sup>25</sup>
- Star Safety System™
- Blind Spot Monitor (BSM)<sup>32</sup> with Rear Cross-Traffic Alert (RCTA)<sup>33</sup>
- Rear parking assist sonar<sup>34</sup>

### Options and Packages

- Mudguards



# TRD Pro

Available in Double Cab

### Drivetrain/Powertrain

- 3.5-Liter DOHC V6 direct-injection Atkinson-cycle with 6-speed manual transmission or 6-speed automatic transmission
- 4WD Demand part-time 4WD
- Hill Start Assist Control (HAC)<sup>36</sup> (A/T only)
- V6 Tow Package<sup>37</sup>

### Off-Road Performance

- TRD Pro cat-back exhaust
- TRD-tuned off-road suspension with 2.5-in. FOX<sup>®42</sup> Internal Bypass shocks with rear remote reservoirs
- TRD-tuned front coil springs and rear leaf springs
- Electronically controlled locking rear differential
- Multi-terrain Select and Crawl Control (CRAWL)<sup>35</sup> (A/T only)
- Active Traction Control (A-TRAC) (M/T only)

### Exterior Features

- TRD Pro ¼-in.-thick aluminum front skid plate
- Black overfenders and color-keyed rear bumper
- Hood scoop with matte-black decal
- Heritage "TOYOTA" front grille
- Rigid Industries<sup>®</sup> LED fog lights
- 16-in. TRD black alloy wheels with Goodyear Wrangler<sup>®</sup> All-Terrain tires
- Power tilt/slide moonroof with sliding sunshade

### Interior Features

- Entune™ Premium JBL<sup>®15</sup> Audio (A/T only) with Integrated Navigation<sup>13</sup> and Entune® App Suite<sup>14</sup>
- Three total USB ports:<sup>5</sup> one USB media port, two USB charge ports
- Integrated backup camera<sup>53</sup>
- 4.2-in. color Multi-Information Display (MID)
- Black TRD Pro leather-trimmed heated front seats
- TRD shift knob and TRD floor mats<sup>16</sup>
- Leather-trimmed tilt/telescopic steering wheel
- Smart Key System<sup>17</sup> on driver's-side door with Push Button Start (A/T only)
- Dual zone automatic climate control
- Power sliding rear window with privacy glass
- Auto-dimming day/night rearview mirror and HomeLink<sup>®18</sup> universal transceiver

### Safety/Convenience

- Toyota Safety Sense™ P (TSS-P)<sup>19</sup> includes:
  - Pre-Collision System<sup>20</sup> with Pedestrian Detection<sup>21</sup> (PCS w/PD)
  - Lane Departure Alert (LDA)<sup>22</sup> with Sway Warning System (SWS)<sup>23</sup>
  - Automatic High Beams (AHB)<sup>24</sup>
  - Dynamic Radar Cruise Control (DRCC)<sup>25</sup>
- Star Safety System™
- Blind Spot Monitor (BSM)<sup>32</sup> with Rear Cross-Traffic Alert (RCTA)<sup>33</sup>
- Rear parking assist sonar<sup>34</sup>

### Options and Packages

- Desert Air Intake<sup>51</sup>

## ACCESSORIES

A wide range of Genuine Toyota Accessories is available to help make driving your Tacoma even more fun. Now your Tacoma can reflect your personal style. There's something for everyone. Some accessories may not be available in all regions of the country. For a complete list of accessories, go to [toyota.com/tacoma](http://toyota.com/tacoma).

3-in. round tube steps  
5-in. oval tube steps (black or chrome)  
16-in. matte-black alloy wheels  
All-weather floor liners<sup>16</sup>  
Bed cleats  
Bed extender<sup>45</sup>  
Bed mat<sup>45</sup>  
BedStep®  
Black badge cap  
Cargo divider<sup>55</sup>  
Cargo net — exterior<sup>55</sup>  
Carpet floor mats<sup>16</sup>

Cast-aluminum running boards  
Deck rail camera mount<sup>56</sup>  
Door edge guards  
Doorsill protectors  
Emergency assistance kit  
Exhaust tip — black chrome  
Exhaust tip — chrome  
First aid kit  
Front skid plate  
Glass Breakage Sensor<sup>57</sup>  
Hood graphic  
Mini tie-downs with hooks

Mudguards  
Paint protection film<sup>58</sup>  
Predator tube steps  
Roof rack<sup>59</sup>  
Security system<sup>60</sup>  
Tailgate insert, black or silver  
TRD 16-in. off-road beadlock-style alloy wheels (matte-black, gray or bronze)  
TRD brake pads  
TRD cat-back exhaust with black chrome tip  
TRD cat-back exhaust with chrome tip  
TRD performance air filter

TRD performance air filter cleaning kit  
TRD performance oil cap  
TRD performance oil filter  
TRD performance radiator cap  
TRD Pro Desert Air Intake<sup>51</sup>  
TRD Pro graphics  
TRD shift knob, red or black  
TRD skid plate with red TRD logo  
Truck bed D-rings



Black tailgate insert



All-weather floor liners<sup>16</sup>



Predator tube steps



Bed mat<sup>45</sup>



Roof rack<sup>59</sup>



Mudguards



TRD 16-in. off-road beadlock-style alloy wheels



Exhaust tip — black chrome



FEATURES<sup>1</sup>

EXTERIOR	ACCESS CAB				DOUBLE CAB					
	SR	SR5	TRD SPORT	TRD OFF-ROAD	SR	SR5	TRD SPORT	TRD OFF-ROAD	LIMITED	TRD PRO
Projector-beam headlights with turn Daytime Running Lights (DRL)	S	—	—	—	S	—	—	—	—	—
Projector-beam headlights with turn Daytime Running Lights (DRL) and integrated fog lights	—	S	—	—	—	S	—	—	—	—
Projector-beam headlights with LED Daytime Running Lights (DRL) and integrated wide-angle fog lights	—	—	S	S	—	—	S	S	—	—
Projector-beam headlights with LED Daytime Running Lights (DRL) and integrated fog lights with chrome bezels	—	—	—	—	—	—	—	—	S	—
Projector-beam headlights with black sport bezels and LED Daytime Running Lights (DRL), Rigid Industries® LED fog lights, and taillights with black sport bezels	—	—	—	—	—	—	—	—	—	S
Dark gray grille with black surround, color-keyed heated power outside mirrors, color-keyed door handles and rear bumper	S	—	—	—	S	—	—	—	—	—
Charcoal grille with chrome surround, color-keyed heated power outside mirrors, door handles and chrome rear bumper (V6 adds color-keyed overfenders)	—	S	—	—	—	S	—	—	—	—
Gray grille with smoked finish and chrome surround, hood scoop, color-keyed heated power outside mirrors with turn signal indicators, color-keyed door handles, overfenders and rear bumper	—	—	S	—	—	—	S	—	—	—
Gray grille with smoked finish and chrome surround, color-keyed heated power outside mirrors with turn signal indicators, color-keyed door handles, black overfenders and chrome rear bumper	—	—	—	S	—	—	—	S	—	—
Silver grille with chrome surround, chrome-accented heated power outside mirrors with turn signal indicators, chrome-accented door handles, color-keyed overfenders and rear bumper	—	—	—	—	—	—	—	—	S	—
Heritage-inspired "TOYOTA" front grille, black badging, overfenders, hood scoop with graphic, and color-keyed heated power outside mirrors with turn signal indicators, door handles and rear bumper	—	—	—	—	—	—	—	—	—	S
Fiber-reinforced Sheet-Molded Composite (SMC) inner bed with steel outer panels, storage compartments and rail caps, with easy lower, lockable and removable tailgate	S	S	S	S	S	S	S	S	S	S
Deck rail system with four adjustable tie-down cleats and four fixed cargo bed tie-down points	S	S	S	S	S	S	S	S	S	S
120V <sup>2</sup> /400W deck-mounted AC power outlet	—	—	S	S	—	—	S	S	S	S
Power tilt/slide moonroof and sliding sunshade	—	—	—	—	—	—	P	P	S	S
16-in. styled steel wheels with P245/75R16 tires (4-cyl. only)	S	S	—	—	S	S	—	—	—	—
16-in. black alloy wheels with P245/75R16 tires (V6 only)	O	O	—	—	—	O	—	—	—	—
16-in. silver alloy wheels with P245/75R16 tires <sup>3</sup>	—	S/P	—	—	—	S/P	—	—	—	—
17-in. machined alloy wheels with P265/65R17 tires	—	—	S	—	—	—	S	—	—	—
16-in. machined contrast alloy wheels with P265/70R16 tires	—	—	—	S	—	—	—	S	—	—
16-in. TRD Pro black alloy wheels with P265/70R16 All-Terrain tires	—	—	—	—	—	—	—	—	—	S
18-in. polished alloy wheels with P265/60R18 tires	—	—	—	—	—	—	—	—	S	—
Two-speed windshield wipers	S	—	—	—	S	—	—	—	—	—
Variable intermittent windshield wipers	—	S	S	S	—	S	S	S	S	S
Fixed rear glass	P	—	—	—	P	—	—	—	—	—
Sliding rear glass w/privacy glass	S	S	S	S	S	S	S	S	—	—
Power sliding rear window w/privacy glass (Double Cab V6 only)	—	—	—	—	—	S	S	S	S	S
Front and rear mudguards (SR5 requires Appearance Package)	—	O	O	O	—	O	O	O	O	O
TRD Pro front skid plate	—	—	—	—	—	—	—	—	—	S
Skid plates: on engine/front suspension	S	S	S	S	S	S	S	S	S	—
Integrated color-keyed tailgate spoiler	S	S	S	S	S	S	S	S	S	S
<b>INTERIOR</b>										
Analog instrumentation with speedometer, tachometer, coolant temperature and fuel gauges; 4.2-in. color Multi-Information Display (MID) with outside temperature, odometer, tripmeters and average fuel economy	S	S	S	—	S	S	S	—	S	—
Analog instrumentation with speedometer, tachometer, coolant temperature and fuel gauges; 4.2-in. color Multi-Information Display (MID) with outside temperature, odometer, tripmeters, average fuel economy and inclinometer with roll/pitch displays	—	—	—	S	—	—	—	S	—	S
Air conditioning	S	S	S	S	S	S	S	S	—	—
Front dual zone automatic climate control with air filter and individual temperature settings for driver and front passenger	—	—	P	P	—	—	P	P	S	S
Qi-compatible wireless smartphone and mobile device charging. <sup>4</sup> Compatible smartphone is placed on top of the power transmission pad. <sup>4</sup>	—	—	S	S	—	—	S	S	S	S

See numbered footnotes in Disclosures section.

S = Standard O = Optional — = Not available P = Feature is available as part of an option package.

FEATURES (continued)


**INTERIOR (continued)**

	ACCESS CAB				DOUBLE CAB					
	SR	SR5	TRD SPORT	TRD OFF-ROAD	SR	SR5	TRD SPORT	TRD OFF-ROAD	LIMITED	TRD PRO
Entune™ Audio — includes 6.1-in. touch-screen display, AM/FM CD player, six speakers, auxiliary port, USB media port <sup>5</sup> advanced voice recognition <sup>6</sup> hands-free phone capability, phone book access and music streaming <sup>7</sup> via <i>Bluetooth</i> <sup>®7</sup> wireless technology, and Siri <sup>®</sup> Eyes Free. <sup>8</sup> See <a href="http://toyota.com/entune">toyota.com/entune</a> for details.	S	—	—	—	S	—	—	—	—	—
Entune™ Audio — includes 6.1-in. touch-screen display, AM/FM CD player, four speakers, auxiliary port, USB media port <sup>5</sup> advanced voice recognition <sup>6</sup> hands-free phone capability, phone book access and music streaming <sup>7</sup> via <i>Bluetooth</i> <sup>®7</sup> wireless technology, and Siri <sup>®</sup> Eyes Free. <sup>8</sup> See <a href="http://toyota.com/entune">toyota.com/entune</a> for details.	P	—	—	—	—	—	—	—	—	—
Entune™ Audio Plus — includes 6.1-in. high-resolution touch-screen display, AM/FM/HD Radio™ <sup>9</sup> CD player, six speakers, auxiliary port, USB media port <sup>5</sup> advanced voice recognition <sup>6</sup> hands-free phone capability, phone book access and music streaming <sup>7</sup> via <i>Bluetooth</i> <sup>®7</sup> wireless technology, Scout <sup>®</sup> GPS Link <sup>10</sup> compatible, Siri <sup>®</sup> Eyes Free, <sup>8</sup> and SiriusXM <sup>®</sup> Satellite Radio <sup>11</sup> with 3-month All Access trial. <sup>12</sup> See <a href="http://toyota.com/entune">toyota.com/entune</a> for details.	—	S	—	—	—	S	—	—	—	—
Entune™ Premium Audio with Integrated Navigation <sup>13</sup> and Entune <sup>®</sup> App Suite <sup>14</sup> — includes 7-in. high-resolution touch-screen with split-screen display, AM/FM cache radio, HD Radio™ <sup>9</sup> CD player, six speakers, auxiliary port, USB media port <sup>5</sup> advanced voice recognition <sup>6</sup> hands-free phone capability, phone book access and music streaming <sup>7</sup> via <i>Bluetooth</i> <sup>®7</sup> wireless technology, Siri <sup>®</sup> Eyes Free, <sup>8</sup> HD Radio™ <sup>9</sup> Predictive Traffic and Doppler Weather overlay, and SiriusXM <sup>®</sup> Satellite Radio <sup>11</sup> with 3-month All Access trial. <sup>12</sup> See <a href="http://toyota.com/entune">toyota.com/entune</a> for details.	—	P	S	S	—	P	S	S	—	—
Entune™ Premium JBL <sup>®15</sup> Audio with Integrated Navigation <sup>13</sup> and Entune <sup>®</sup> App Suite <sup>14</sup> — includes 7-in. high-resolution touch-screen with split-screen display, AM/FM cache radio, HD Radio™ <sup>9</sup> CD player, six JBL <sup>®15</sup> speakers and subwoofer amplifier, auxiliary port, USB media port <sup>5</sup> advanced voice recognition <sup>6</sup> hands-free phone capability, phone book access and music streaming <sup>7</sup> via <i>Bluetooth</i> <sup>®7</sup> wireless technology, Siri <sup>®</sup> Eyes Free, <sup>8</sup> HD Radio™ <sup>9</sup> Predictive Traffic and Doppler Weather overlay, and SiriusXM <sup>®</sup> Satellite Radio <sup>11</sup> with 3-month All Access trial. <sup>12</sup> See <a href="http://toyota.com/entune">toyota.com/entune</a> for details.	—	—	—	—	—	—	P	P	S	S
Three total USB ports: <sup>5</sup> one USB media port, two USB charge ports	S	S	S	S	S	S	S	S	S	S
Fabric-trimmed seats; 4-way adjustable driver's seat with lumbar support; 4-way adjustable front passenger seat	S	S	S	S	S	S	S	S	—	—
Leather-trimmed seats; 4-way adjustable driver's seat with lumbar support; 4-way adjustable front passenger seat	—	—	—	—	—	—	—	—	S	—
Black TRD Pro leather-trimmed heated front seats; 4-way adjustable driver's seat with lumbar support; 4-way adjustable front passenger seat	—	—	—	—	—	—	—	—	—	S
Urethane tilt/telescopic steering wheel with audio controls	S	—	—	—	S	—	—	—	—	—
Leather-trimmed tilt/telescopic steering wheel with audio and <i>Bluetooth</i> <sup>®7</sup> hands-free phone controls	—	S	S	S	—	S	S	S	S	S
Leather-trimmed shift lever	—	—	S	S	—	—	S	S	S	S
TRD Pro shift knob	—	—	—	—	—	—	—	—	—	S
TRD Pro floor mats <sup>16</sup>	—	—	—	—	—	—	—	—	—	S
Remote keyless entry system with lock, unlock and panic functions	P	S	S	S	P	S	S	S	—	S
Smart Key System <sup>17</sup> on driver's door with Push Button Start (not available on M/T)	—	—	S	S	—	—	S	S	S	S
Manual day/night rearview mirror (4-cyl. only)	S	S	—	—	S	S	—	—	—	—
Auto-dimming day/night rearview mirror (V6 only)	—	S	S	S	—	S	S	S	—	—
Auto-dimming day/night rearview mirror and HomeLink <sup>®18</sup> universal transceiver	—	—	—	—	—	—	—	—	S	S

See numbered footnotes in Disclosures section.

S = Standard O = Optional — = Not available P = Feature is available as part of an option package.

FEATURES (continued)

SAFETY AND CONVENIENCE	ACCESS CAB				DOUBLE CAB					
	SR	SR5	TRD SPORT	TRD OFF-ROAD	SR	SR5	TRD SPORT	TRD OFF-ROAD	LIMITED	TRD PRO
Toyota Safety Sense™ P (TSS-P) <sup>19</sup> — includes Pre-Collision System <sup>20</sup> with Pedestrian Detection <sup>21</sup> (PCS w/PD), Lane Departure Alert (LDA) <sup>22</sup> with Sway Warning System (SWS) <sup>23</sup> , Automatic High Beams (AHB) <sup>24</sup> and Dynamic Radar Cruise Control (DRCC) <sup>25</sup>	S	S	S	S	S	S	S	S	S	S
 Star Safety System™ — includes Vehicle Stability Control (VSC) <sup>26</sup> , Traction Control (TRAC), Anti-lock Brake System (ABS) with Electronic Brake-force Distribution (EBD), Brake Assist (BA) <sup>27</sup> and Smart Stop Technology® (SST) <sup>28</sup>	S	S	S	S	S	S	S	S	S	S
Driver and front passenger Advanced Airbag System <sup>29</sup>	S	S	S	S	S	S	S	S	S	S
Driver and front passenger seat-mounted side airbags, driver and front passenger knee airbags, and front and rear Roll-sensing Side Curtain Airbags (RSCA) <sup>29</sup>	S	S	S	S	S	S	S	S	S	S
Driver and front passenger active headrests <sup>30</sup>	S	S	S	S	S	S	S	S	S	S
3-point seatbelts for all seating positions; driver-side Emergency Locking Retractor (ELR) and Automatic/Emergency Locking Retractor (ALR/ELR) on all passenger seatbelts	S	S	S	S	S	S	S	S	S	S
LATCH (Lower Anchors and Tethers for CHildren) includes lower anchors for front passenger seat on Access Cab and outboard rear seats on Double Cab	S	S	S	S	S	S	S	S	S	S
Child-protector rear door locks (Double Cab only)	—	—	—	—	S	S	S	S	S	S
Tire Pressure Monitor System (TPMS) <sup>31</sup>	S	—	—	—	S	—	—	—	—	—
Tire Pressure Monitor System (TPMS) <sup>31</sup> with individual tire location alert	—	S	S	S	—	S	S	S	S	S
Blind Spot Monitor (BSM) <sup>32</sup> with Rear Cross-Traffic Alert (RCTA) <sup>33</sup>	—	—	P	P	—	—	P	P	S	S
Rear parking assist sonar <sup>34</sup>	—	P	P	P	—	P	P	P	S	S
Multi-terrain Select and Crawl Control (CRAWL) <sup>35</sup> (4WD and A/T only)	—	—	—	S	—	—	—	S	—	S
Hill Start Assist Control (HAC) <sup>36</sup> (A/T only)	S	S	S	S	S	S	S	S	S	S
Active Traction Control (A-TRAC) (M/T only)	—	—	—	S	—	—	—	S	—	S
Electronically controlled locking rear differential	—	—	—	S	—	—	—	S	—	S
Class-IV towing hitch receiver, <sup>37</sup> ATF cooler (not available on M/T), engine oil cooler, power steering cooler, 130-amp alternator, 4- and 7-pin connector with converter, and Trailer-Sway Control (TSC) <sup>38</sup> (V6 only)	S	S	S	S	S	S	S	S	S	S
Engine immobilizer <sup>39</sup>	S	S	S	S	S	S	S	S	S	S

See numbered footnotes in Disclosures section.

S = Standard   O = Optional   — = Not available   P = Feature is available as part of an option package.

SPECIFICATIONS

MECHANICAL/PERFORMANCE	ACCESS CAB				DOUBLE CAB					
	SR	SR5	TRD SPORT	TRD OFF-ROAD	SR	SR5	TRD SPORT	TRD OFF-ROAD	LIMITED	TRD PRO
<b>ENGINE</b>										
2.7-Liter DOHC 16-Valve 4-Cylinder with VVT-i; 159 hp @ 5200 rpm; 180 lb.-ft. @ 3800 rpm	S	S	—	—	S	S	—	—	—	—
3.5-Liter V6 DOHC 24-Valve direct-injection Atkinson-cycle engine with VVT-iW (Variable Valve Timing-intelligent Wide) intake and VVT-i (Variable Valve Timing with intelligence) exhaust, with 278 hp @ 6000 rpm/265 lb.-ft. @ 4600 rpm (bore x stroke: 94.0 x 83.0 mm; compression ratio: 11.8)	S	S	S	S	S	S	S	S	S	S
TRD Pro cat-back exhaust	—	—	—	—	—	—	—	—	—	S
<b>EMISSION RATING</b>										
Low Emission Vehicle (LEV-III)	S	S	S	S	S	S	S	S	S	S
<b>TRANSMISSION</b>										
6-speed manual transmission	—	—	S	—	—	—	S	S	—	S
6-speed Electronically Controlled automatic Transmission with intelligence (ECT-i)	S	S	S	S	S	S	S	S	S	S
Clutch start-cancel switch (M/T only)	—	—	S	—	—	—	S	S	—	S
<b>DRIVETRAIN</b>										
Rear-Wheel Drive (RWD) with Automatic Limited-Slip Differential (Auto LSD) <sup>40</sup>	S	S	S	—	S	S	S	—	S	—
4WDemand part-time 4WD with electronically controlled transfer case and Automatic Limited-Slip Differential (Auto LSD) <sup>40</sup>	O	O	O	—	O	O	O	—	O	—
Active Traction Control (A-TRAC) (M/T only)	—	—	—	—	—	—	—	S	—	S
<b>BODY CONSTRUCTION</b>										
One-piece frame rails with 8-in. cross members and fully boxed front sub-frame	S	S	S	S	S	S	S	S	S	S
<b>SUSPENSION</b>										
Coil-spring double-wishbone front suspension and stabilizer bar; leaf spring rear suspension with staggered outboard-mounted gas shock absorbers and stabilizer bar	S	S	S	S	S	S	S	S	S	S
TRD sport-tuned suspension	—	—	S	—	—	—	S	—	—	—
TRD-tuned off-road suspension with Bilstein <sup>®41</sup> shocks	—	—	—	S	—	—	—	S	—	—
TRD-tuned off-road suspension with 2.5-in. FOX <sup>®42</sup> Internal Bypass coil-overs and rear remote reservoir shocks	—	—	—	—	—	—	—	—	—	S
<b>STEERING</b>										
Variable-assist power rack-and-pinion steering	S	S	S	S	S	S	S	S	S	S
Turning circle diameter, curb-to- curb (ft.) (Standard Bed/Long Bed)	40.6/—	40.6/—	40.6/—	40.6/—	40.6/—	40.6/44.1	40.6/44.1	40.6/44.1	40.6/—	41.6/—
<b>BRAKES</b>										
Power-assisted ventilated front disc brakes; rear drum brakes with tandem booster and Star Safety System™	S	S	S	S	S	S	S	S	S	S
<b>DIMENSIONS</b>										
<b>EXTERIOR (in.)</b>										
Overall height	70.6	70.6	70.6	70.6	70.6	70.6	70.6	70.6	70.6	71.6
Overall width	74.4	74.4	75.2	75.2	74.4	74.4	75.2	75.2	75.2	75.2
Overall length (Standard Bed/Long Bed)	212.3/—	212.3/—	212.3/—	212.3/—	212.3/—	212.3/225.5	212.3/225.5	212.3/225.5	212.3/—	212.3/—
Wheelbase (Standard Bed/Long Bed)	127.4/—	127.4/—	127.4/—	127.4/—	127.4/—	127.4/140.6	127.4/140.6	127.4/140.6	127.4/—	127.4/—
Bed length (Standard Bed/Long Bed)	73.7/—	73.7/—	73.7/—	73.7/—	60.5/73.7	60.5/73.7	60.5/73.7	60.5/73.7	60.5/—	60.5/—
Bed height	19.1	19.1	19.1	19.1	19.1	19.1	19.1	19.1	19.1	19.1
Bed width	41.5	41.5	41.5	41.5	41.5	41.5	41.5	41.5	41.5	41.5
Track (front/rear)	63/63.2	63/63.2	63/63.2	63/63.2	63/63.2	63/63.2	63/63.2	63/63.2	63/63.2	64/64.2
<b>INTERIOR (front/rear-seat) (in.)</b>										
Head room	39.7/34.9	39.7/34.9	39.7/34.9	39.7/34.9	39.7/38.3	39.7/38.3	39.7/38.3	39.7/38.3	39.7/38.3	39.7/38.3
Hip room	57.2/51.7	57.2/51.7	57.2/51.7	57.2/51.7	57.2/56.3	57.2/56.3	57.2/56.3	57.2/56.3	57.2/56.3	57.2/56.3
Leg room	42.9/24.6	42.9/24.6	42.9/24.6	42.9/24.6	42.9/32.6	42.9/32.6	42.9/32.6	42.9/32.6	42.9/32.6	42.9/32.6
Shoulder room	58.3/56.5	58.3/56.5	58.3/56.5	58.3/56.5	58.3/58.9	58.3/58.9	58.3/58.9	58.3/58.9	58.3/58.9	58.3/58.9

See numbered footnotes in Disclosures section.

S = Standard O = Optional — = Not available P = Feature is available as part of an option package.

SPECIFICATIONS (continued)

OFF-HIGHWAY	ACCESS CAB				DOUBLE CAB					
	SR	SR5	TRD SPORT	TRD OFF-ROAD	SR	SR5	TRD SPORT	TRD OFF-ROAD	LIMITED	TRD PRO
Approach/departure/breakover angle (degrees)										
Standard Bed (4x2)	29/23.5/24*	29/23.5/24	29/23.5/24	—/—/—	—/—/—	—/—/—	—/—/—	—/—/—	—/—/—	—/—/—
(4x4)	29/23.5/21	29/23.5/21	29/23.5/21	32/29/24	—/—/—	—/—/—	—/—/—	—/—/—	—/—/—	—/—/—
Short Bed (4x2)	—/—/—	—/—/—	—/—/—	—/—/—	29/23.5/21	29/23.5/21	29/23.5/21	32/23.1/20	29/23.5/21	—/—/—
(4x4)	—/—/—	—/—/—	—/—/—	—/—/—	29/23.5/21	29/23.5/21	29/23.5/21	32/23.5/21	29/23.5/21	35/19.1/23.9
Long Bed (4x2)	—/—/—	—/—/—	—/—/—	—/—/—	—/—/—	29/23.1/20	29/23.1/20	—/—/—	—/—/—	—/—/—
(4x4)	—/—/—	—/—/—	—/—/—	—/—/—	—/—/—	29/23.1/21	29/23.1/21	32/23.1/21	—/—/—	—/—/—
Ground clearance (in.)	9.4	9.4	9.4	9.4	9.4	9.4	9.4	9.4	9.4	9.4
Electronically controlled locking rear differential	—	—	—	S	—	—	—	S	—	S
<b>RATIOS</b>										
4x4 transfer case ratio (high/low)	1.00/2.57	1.00/2.57	1.00/2.57	1.00/2.57	1.00/2.57	1.00/2.57	1.00/2.57	1.00/2.57	1.00/2.57	1.00/2.57
Differential ratio, V6 M/T	—	—	4.30	—	—	—	4.30	4.30	—	4.30
Differential ratio, 4-cyl./V6 A/T	4.30/3.909	4.30/3.909	—/3.909	—/3.909	4.30/3.909	4.30/3.909	—/3.909	—/3.909	—/3.909	—/3.909
<b>WEIGHTS AND CAPACITIES</b>										
Curb weight (lb.), 4-cyl. A/T (4x2/4x4)	3980/4220	3980/4220	—/—	—/—	4095/—	4095/—	—/—	—/—	—/—	—/—
Curb weight (lb.), V6 M/T (4x2/4x4)	—/—	—/—	—/4325	—/—	—/—	—/—	—/4445	—/4445	—/—	—/4445
Curb weight (lb.), V6 A/T (4x2/4x4)	4060/4305	4060/4305	4060/4305	—/4305	—/4425	4180/4425 <sup>43</sup>	4180 <sup>44</sup> /4425 <sup>43</sup>	4180/4425 <sup>43</sup>	4230/4480	—/4425
Gross Vehicle Weight Rating (GVWR) (lb.)	5600	5600	5600	5600	5600	5600	5600	5600	5600	5600
Gross Combined Weight Rating (GCWR) (lb.)	11,360	11,360	11,360	11,360	11,360	11,360	11,360	11,360	11,360	11,360
Payload (lb.) <sup>45</sup> 4-cyl. A/T (4x2/4x4)	1620/1380	1620/1380	—/—	—/—	1505/—	1505/—	—/—	—/—	—/—	—/—
Payload (lb.) <sup>45</sup> V6 M/T (4x2/4x4)	—/—	—/—	—/1275	—/—	—/—	—/—	—/1155	—/1155	—/—	—/1155
Payload (lb.) <sup>45</sup> V6 A/T (4x2/4x4)	1540/1295	1540/1295	1540/1295	—/1295	—/1175	1420/1175 <sup>46</sup>	1420/1175 <sup>46</sup>	1420/1175 <sup>46</sup>	1370/1120	—/1175
Fuel tank (gal.)	21.1	21.1	21.1	21.1	21.1	21.1	21.1	21.1	21.1	21.1
Passenger volume (cu. ft.) (behind front/rear seat)	57.5/28.1	57.5/28.1	57.5/28.1	57.5/28.1	57.5/42.6	57.5/42.6	57.5/42.6	57.5/42.6	57.5/42.6	57.5/42.6
Seating capacity	4	4	4	4	5	5	5	5	5	5
<b>TOWING<sup>37</sup></b>										
Class-IV towing hitch receiver, ATF cooler (not available on M/T), engine oil cooler, power steering cooler, 130-amp alternator, 4- and 7-pin connector with converter, and Trailer-Sway Control (TSC) <sup>38</sup> (V6 only)										
	S	S	S	S	S	S	S	S	S	S
Tongue load (lb.), 4-cyl. A/T (4x2/4x4)	350/350	350/350	—/—	—/—	350/—	350/—	—/—	—/—	—/—	—/—
Tongue load (lb.), V6 M/T (4x2/4x4)	—/—	—/—	—/650	—/—	—/—	—/—	—/640	—/640	—/—	—/640
Tongue load (lb.), V6 A/T (4x2/4x4)	680/650	680/650	680/650	—/650	—/640	670 <sup>47</sup> /640	670 <sup>47</sup> /640	670/640	660/640	—/640
Towing capacity (lb.), 4-cyl. A/T (4x2/4x4)	3500/3500	3500/3500	—/—	—/—	3500/—	3500/—	—/—	—/—	—/—	—/—
Towing capacity (lb.), V6 M/T (4x2/4x4)	—/—	—/—	—/6500	—/6500	—/—	—/—	—/6400	—/6400	—/—	—/6400
Towing capacity (lb.), V6 A/T (4x2/4x4)	6800/6500	6800/6500	6800/6500	—/6500	—/6400	6700/6400	6700 <sup>48</sup> /6400	6700/6400	6600/6400	—/6400
<b>TIRES</b>										
Spare: full-size	S	S	S	S	S	S	S	S	S	S
<b>MILEAGE ESTIMATES (mpg city/highway)<sup>49</sup></b>										
4-cyl. A/T (4x2/4x4)	20/23;19/22	19/23;19/22	—/—	—/—	19/23;—/—	19/23;—/—	—/—	—/—	—/—	—/—
V6 M/T (4x2/4x4)	—/—	—/—	—/—;17/21	—/—	—/—;—/—	—/—;—/—	—/—;17/21	—/—;17/20	—/—	—/—;17/20
V6 A/T (4x2/4x4)	19/24;18/22	19/24;18/23	19/24;18/23	—/—;18/23	—/—;18/23	19/24;18/23	19/24;18/23	19/24;18/23	19/24;18/23	—/—;18/22

See numbered footnotes in Disclosures section.

\*V6=21 degrees

S = Standard O = Optional — = Not available P = Feature is available as part of an option package.

## CARS BUILT FOR THE WAY YOU LIVE

At Toyota, we build cars for how you live. From building advanced safety features designed to help prevent crashes to driving cross-country to understand how we can make your driving experience better, our work starts with understanding your needs. Building cars for how you live also means thinking about tomorrow — from fuel efficiency and environmental innovations, to things beyond cars, like a bicycle that you can control with your mind. And because what we learn building cars can help improve lives in other places, we do things like help communities rebuild their homes quickly after a disaster and work with soup kitchens to help them serve more people faster. Toyota. Built for how you live. Together we are going places.

## DISCLOSURES

**1.** Toyota strives to build vehicles to match customer interest and thus they typically are built with popular options and option packages. Not all options/packages are available separately and some may not be available in all regions of the country. If you would prefer a vehicle with no or different options, contact your dealer to check for current availability or the possibility of placing a special order. **2.** Do not exceed 120V. See *Owner's Manual* for additional limitations and details. **3.** Standard on V6 models. Available as part of the SR5 Appearance Package. **4.** Qi wireless charging may not be compatible with all mobile phones, MP3/WMA players and like models. When using the wireless charging system, avoid placing metal objects between the wireless charger and the mobile device when charging is active. Doing so may cause metal objects to become hot and could cause burns. **5.** May not be compatible with all mobile phones, MP3/WMA players and like models. **6.** Advanced voice recognition capabilities vary by head unit. **7.** The Bluetooth® word mark and logos are registered trademarks owned by Bluetooth SIG, Inc., and any use of such marks by Toyota is under license. A compatible Bluetooth®-enabled phone must first be paired. Phone performance depends on software, coverage and carrier. **8.** Always drive safely, obey traffic laws and focus on the road while driving. Siri® is available on select iPhone®/iPad® models and requires Internet access. Siri® is not available in all languages or all areas and features vary by area. Some Siri® functionality and commands are not accessible in the vehicle. Data charges may apply. See apple.com and phone carrier for details. Siri® is a registered trademark of Apple Inc. **9.** HD Radio™ Technology manufactured under license from iBiquity Digital Corporation U.S. and Foreign Patents. HD Radio™ and the HD, HD Radio, and "Arc" logos are proprietary trademarks of iBiquity Digital Corp. **10.** The Scout® GPS Link app is compatible with select vehicle models. Availability and accuracy of the information provided by Scout® GPS Link is subject to change at any time without notice and is dependent upon many factors, including smartphone connectivity, capability and cellular reception. Always use safe driving practices and follow all traffic rules. Data charges may apply. Scout® and Telenav® are registered trademarks of Telenav, Inc. **11.** SiriusXM® audio services require a subscription sold separately by Sirius XM Radio Inc. If you decide to continue service after your trial, the subscription plan you choose will automatically renew thereafter and you will be charged according to your chosen payment method at then-current rates. Fees and taxes apply. To cancel, you must call SiriusXM at 1-866-635-2349. See SiriusXM Customer Agreement for complete terms at www.siriusxm.com. All fees and programming subject to change. Not all vehicles or devices are capable of receiving all services offered by SiriusXM. Current information and features may not be available in all locations, or on all receivers. ©2018 Sirius XM Radio Inc. SiriusXM and all related marks and logos are trademarks of Sirius XM Radio Inc. **12.** Trial length and service availability may vary by model, model year or trim. **13.** Be sure to obey traffic regulations and maintain awareness of road and traffic conditions at all times. Availability and accuracy of the information provided by the navigation system is dependent upon many factors. Use common sense when relying on information provided. Services and programming subject to change. Services not available in every city or roadway. Updates may be available from your dealer at an additional cost. See *Owner's Manual* for details. **14.** Be sure to obey traffic regulations and maintain awareness of road and traffic conditions at all times. Apps/services vary by phone/carrier; functionality depends on many factors. Select apps use large amounts of data; you are responsible for charges. Apps and services subject to change at any time without notice. See toyota.com/entune for details. **15.** JBL® is a registered trademark of Harman International Industries, Incorporated. **16.** This floor mat/floor liner was designed specifically for use in your model and model year vehicle and SHOULD NOT be used in any other vehicle. To avoid potential interference with pedal operation, each mat/liner must be secured with its fasteners. Do not install a floor mat/floor liner on top of an existing floor mat/floor liner. **17.** The Smart Key System may interfere with some pacemakers or cardiac defibrillators. If you have one of these medical devices, please talk to your doctor to see if you should deactivate this system. **18.** HomeLink® and the HomeLink® house icon are registered trademarks of Gentex Corporation. **19.** Drivers are responsible for their own safe driving. Always pay attention to your surroundings and drive safely. System effectiveness is dependent on many factors including road, weather and vehicle conditions. See *Owner's Manual* for additional limitations and details. **20.** The TSS Pre-Collision System is designed to help avoid or reduce the crash speed and damage in certain frontal collisions only. It is not a substitute for safe and attentive driving. System effectiveness is dependent on many factors including road, weather and vehicle conditions. See *Owner's Manual* for additional limitations and details. **21.** The Pedestrian Detection system is designed to detect a pedestrian ahead of the vehicle, determine if impact is imminent and help reduce impact speed. It is not a substitute for safe and attentive driving. System effectiveness depends on many factors, such as speed, size and position of pedestrians, and weather, light and road conditions. See *Owner's Manual* for additional limitations and details. **22.** Lane Departure Alert is designed to read visible lane markers under certain conditions, and provide visual and audible alerts when lane departure is detected. It is not a collision-avoidance system or a substitute for safe and attentive driving. Effectiveness is dependent on many factors including road, weather and vehicle conditions. See *Owner's Manual* for additional limitations and details. **23.** Sway Warning is designed to provide a visual and audible alert if it detects a pattern of vehicle movement that might indicate driver inattention or drowsiness. It is not a collision-avoidance system or a substitute for safe and attentive driving. Effectiveness is dependent on many factors including road, weather and vehicle conditions. See *Owner's Manual* for additional limitations and details. **24.** Automatic High Beams operate at speeds above 25 mph. Factors such as a dirty windshield, weather, lighting and terrain limit effectiveness, requiring the driver to manually operate the high beams. See *Owner's Manual* for additional limitations and details. **25.** Dynamic Radar Cruise Control is designed to assist the driver and is not a substitute for safe and attentive driving practices. System effectiveness is dependent on many factors including road, weather and traffic conditions. See *Owner's Manual* for additional limitations and details. **26.** Vehicle Stability Control is an electronic system designed to help the driver maintain vehicle control under adverse conditions. It is not a substitute for safe and attentive driving practices. Factors including speed, road conditions, weather and driver steering input can all affect whether VSC will be effective in preventing a loss of control. See *Owner's Manual* for additional limitations and details. **27.** Brake Assist is designed to help the driver take full advantage of the benefits of ABS. It is not a substitute for safe driving practices. Braking effectiveness also depends on proper vehicle maintenance, and tire and road conditions. See *Owner's Manual* for additional limitations and details. **28.** Smart Stop Technology® operates only in the event of certain contemporaneous brake and accelerator pedal applications. When engaged, the system will reduce power to help the brakes bring the vehicle to a stop. Factors including speed, road conditions and driver input can all impact stopping distance. Smart Stop Technology® is not a substitute for safe and attentive driving and does not guarantee instant stopping. See *Owner's Manual* for additional limitations and details. **29.** All the airbag systems are Supplemental Restraint Systems. All airbags (if installed) are designed to inflate only under certain conditions and in certain types of severe collisions. To decrease the risk of injury from an inflating airbag, always wear seatbelts and sit upright in the middle of the seat as far back as possible. Do not put objects in front of an airbag or around the seatback. Do not use a rearward-facing child seat in any front passenger seat. See *Owner's Manual* for additional limitations and details. **30.** Active front headrests can help reduce the extent of whiplash in certain types of rear-end collisions. **31.** The Tire Pressure Monitor System alerts the driver when tire pressure is critically low. For optimal tire wear and performance, tire pressure should be checked regularly with a gauge; do not rely solely on the monitor system. See *Owner's Manual* for details. **32.** Do not rely exclusively on the Blind Spot Monitor. Always look over your shoulder and use your turn signal. There are limitations to the function, detection and range of the monitor. See *Owner's Manual* for additional limitations and details. **33.** Do not rely exclusively on the Rear Cross-Traffic Alert system. Always look over your shoulder and use your mirrors to confirm rear clearance. There are limitations to the function, detection and range of the system. See *Owner's Manual* for additional limitations and details. **34.** Rear parking assist sonar is designed to warn drivers of potential rear collisions at speeds of 6 mph or less. Certain vehicle and environmental factors, including an object's shape and composition, may affect the ability of the rear parking assist sonar to detect it. Always look around outside the vehicle and use mirrors to confirm clearance. See *Owner's Manual* for additional limitations and details. **35.** Crawl Control is designed for driving on difficult terrain at low speeds. It assists the driver by controlling acceleration and braking, allowing the driver to focus on steering. The Toyota Tacoma is designed to meet off-road driving requirements, but off-roading is inherently dangerous. Always wear seatbelts. See *Owner's Manual* for additional limitations and details. **36.** Hill Start Assist Control is designed to help minimize backward rolling on steep ascents. It is not a substitute for safe driving judgment and practices. Factors including speed, grade, surface conditions and driver input can all affect whether HAC will be effective in preventing a loss of control. See *Owner's Manual* for additional limitations and details. **37.** Before towing, confirm your vehicle and trailer are compatible, hooked up and loaded properly and that you have any necessary additional equipment. Do not exceed any Weight Ratings and follow all instructions in your *Owner's Manual*. The maximum you can tow depends on base curb weight plus the total weight of any cargo, occupants, and added vehicle equipment. "Added vehicle equipment" includes additional standard/optional equipment and accessories added by the manufacturer, dealers, and/or vehicle owners. The only way to be certain of your vehicle's exact curb weight is to weigh your vehicle without passengers or cargo. **38.** Trailer-Sway Control (TSC) is an electronic system designed to help the driver maintain vehicle control under adverse conditions. It is not a substitute for safe driving practices. Factors including speed, road conditions, weather and driver steering input can all affect whether TSC will be effective in preventing a loss of control.

## DISCLOSURES (continued)

See *Owner's Manual* for additional limitations and details. **39.** The engine immobilizer is a state-of-the-art anti-theft system. When you insert your key into the ignition switch or bring a Smart Key fob into the vehicle, the key transmits an electronic code to the vehicle. The engine will only start if the code in the transponder chip inside the key/fob matches the code in the vehicle's immobilizer. Because the transponder chip is embedded in the key/fob, it can be costly to replace. If you lose a key or fob, your Toyota dealer can help. Alternatively, you can find a qualified independent locksmith to perform high-security key services by consulting your local Yellow Pages or by contacting [www.aloa.org](http://www.aloa.org). **40.** Auto LSD is an electronic, brake-actuated limited-slip differential that automatically activates when VSC is disengaged at low speeds. **41.** Bilstein® is a registered trademark of ThyssenKrupp Bilstein GmbH FED REP GERMANY. **42.** FOX is a registered trademark of FOX Factory, Inc. (©FOX Factory, Inc.) **43.** 4480 with Long Bed. **44.** 4230 with Long Bed. **45.** Payload Capacity is the calculation of GVWR minus curb weight and should be used for comparison purposes only. The maximum amount of passenger and cargo weight your vehicle can carry is the Load Carrying Capacity indicated on the label(s) on the driver's doorjamb. **46.** 1120 with Long Bed. **47.** 660 with Long Bed. **48.** 6600 with Long Bed. **49.** 2018 EPA-estimated mileage. Actual mileage will vary. **50.** The Toyota Tacoma is designed to meet most off-road driving requirements, but off-roading is inherently dangerous and may result in vehicle damage. Toyota encourages responsible operation to help protect you, your vehicle and the environment. Seatbelts should be worn at all times. Do not allow passengers to ride in cargo area. **51.** Do not use an automatic car wash if vehicle is equipped with Desert Air Intake accessory. Damage to vehicle may result which falls outside of the vehicle's warranty coverage. **52.** Apple and the Apple logo are trademarks of Apple Inc., registered in the U.S. and other countries. **53.** The backup camera does not provide a comprehensive view of the rear area of the vehicle. You should also look around outside your vehicle and use your mirrors to confirm rearward clearance. Environmental conditions may limit effectiveness and view may become obscured. See *Owner's Manual* for additional limitations and details. **54.** Replaces chrome rear bumper with color-keyed rear bumper on TRD Off-Road models. **55.** Cargo and load capacity limited by weight and distribution. **56.** Camera accessory not included with purchase. **57.** Available only for vehicles equipped with factory security and factory remote keyless entry system or Smart Key System. **58.** The Toyota Genuine Accessory Warranty will only apply when the installation is performed by a trained Toyota-approved installer. Please see dealer for details. **59.** Do not overload your vehicle. See *Owner's Manual* for weight limits and restrictions. **60.** Available for vehicles with factory remote keyless entry.

Toyota strives to build vehicles to match customer interest and thus they typically are built with popular options and option packages. Not all options/packages are available separately and some may not be available in all regions of the country. See [toyota.com](http://toyota.com) for information about options/packages commonly available in your area. If you would prefer a vehicle without any or with different options, contact your dealer to check for current availability or the possibility of placing a special order.

Toyota Tacoma is designed to meet most off-road driving requirements. Abusive use may result in bodily harm or damage. Toyota encourages responsible operation to protect you, your vehicle and the environment. Seatbelts should be worn at all times.

Please do not allow passengers to ride in the cargo area. Towing hitch receiver/ball mount kits are not intended to provide crash protection. For details on vehicle specifications, standard features and available equipment in your area, contact your Toyota dealer. A vehicle with particular equipment may not be available at the dealership. Ask your Toyota dealer to help locate a specifically equipped vehicle.

All information presented herein is based on data available at the time of posting, is subject to change without notice and pertains specifically to mainland U.S.A. vehicles only. Prototypes shown. Actual production vehicles may vary.

## WARRANTIES

Every Toyota Car, Truck and SUV is built to exceptional standards. And that's not idle boasting. We back it up with these Limited Warranty Coverages:

**Basic:** 36 months/36,000 miles (all components other than normal wear and maintenance items).

**Powertrain:** 60 months/60,000 miles (engine, transmission/transaxle, drive system, seatbelts and airbags).

**Rust-Through:** 60 months/unlimited miles (corrosion perforation of sheet metal).

**Emissions:** Coverages vary under Federal and California regulations. Refer to applicable *Warranty and Maintenance Guide* for details.

**Accessories:** For Genuine Toyota Accessories purchased at the time of the new vehicle purchase, the Toyota Accessory Warranty coverage is in effect for 36 months/36,000 miles from the vehicle's in-service date, which is the same coverage as the Toyota New Vehicle Limited Warranty.

For Genuine Toyota Accessories purchased after the new vehicle purchase the coverage is 12 months, regardless of mileage, from the date the accessory was installed on the vehicle, or the remainder of any applicable new vehicle warranty, whichever provides greater coverage.

You may be eligible for transportation assistance if it's necessary that your vehicle be kept overnight for repairs covered under warranty. Please see your authorized Toyota dealership for further details.

For complete details about Toyota's warranties, please visit [www.toyota.com](http://www.toyota.com), refer to the applicable *Warranty and Maintenance Guide* or see your Toyota dealer.