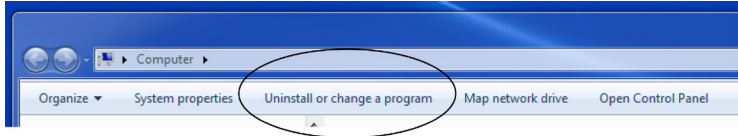




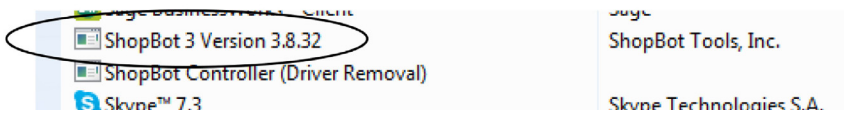
Uninstalling and Reinstalling ShopBot and VCarve Software

Uninstalling ShopBot Applications

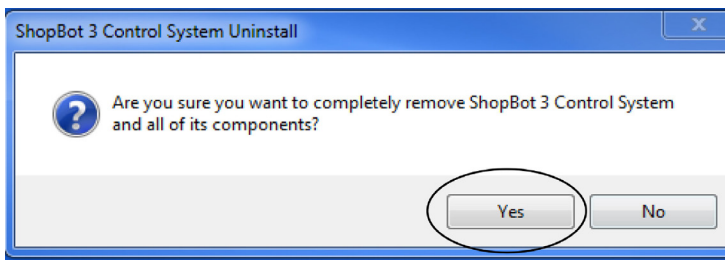
1. Click on Windows button in bottom left of computer and click on “Computer”.
2. Click on “Uninstall or change a program”.



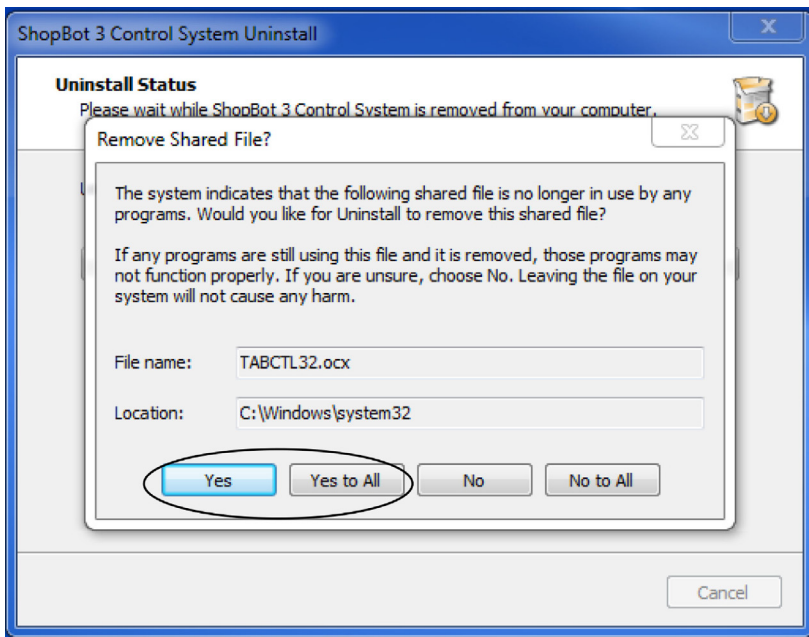
3. Scroll down to “ShopBot 3 Version x.x.xx”, and click on folder. Click on “Uninstall”.



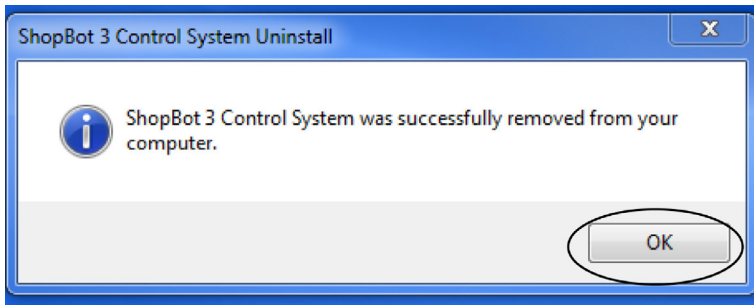
4. Click “Yes” when the “Are you sure you want to completely remove...” box pops up.



5. Click “Yes” or “Yes All” when the “Remove shared files...” box pops up.



6. Click “OK” when “ShopBot 3 Control System Successful Removed” box pops up.

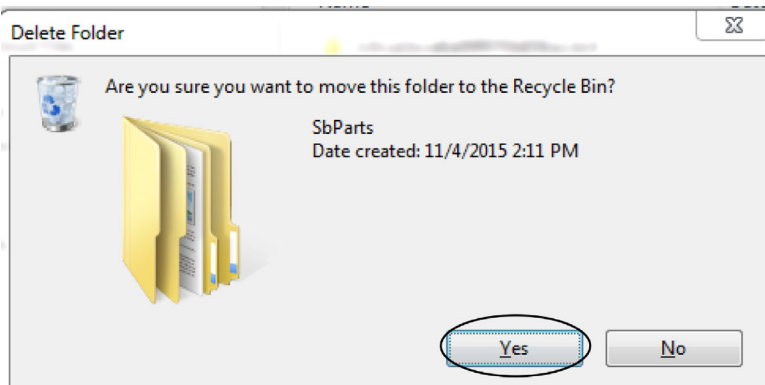


Verifying Deletion

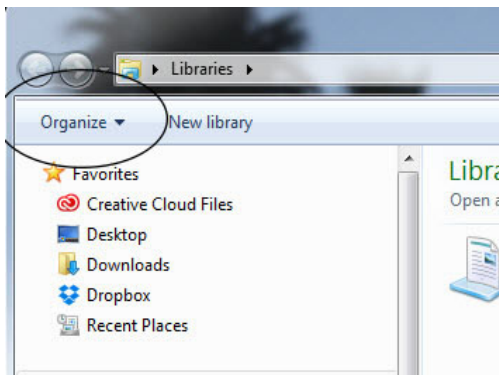
1. Click on “Computer”, then access the C: drive.
2. Scroll down to “SbParts” folder and highlight the folder. Press “Delete” button.



3. Click “Yes” when “Are you sure?” box pops up.

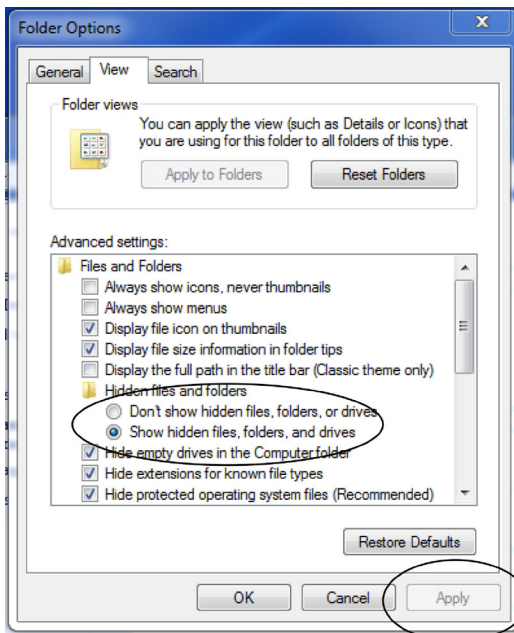


4. Open any folder on the computer. In the top left, there will be “view” or “organize”.

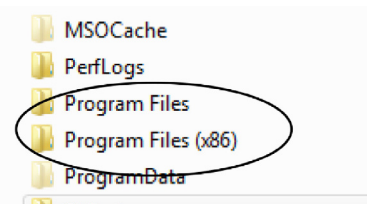


- If “Organize”, click Organize, then “Folder and Search Options”.
- If “View”, click View, then “Folder Options”, and “Advanced Settings”.

5. Click the “Show hidden files...” radio button, and click “Apply”.

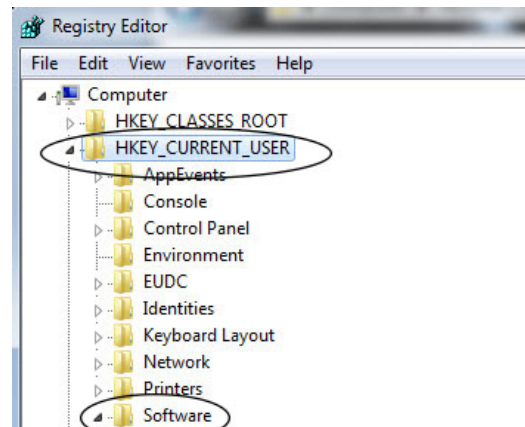
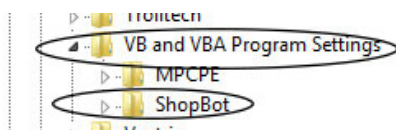


6. Go to “C:/” and “Program Files” and “Program Files (x86)”. Look for any ShopBot folders and delete them if they are there.



NOTE: Prior to this step, ensure the product key is available from when first registering software. This would be in product documentation, or in an e-mail from ShopBot.

7. Close window. Click “Start” and enter “regedit” under “Search” box.
8. Find the following path: HKEY_CURRENT_USER\SOFTWARE\VB and VBA Program Settings.
9. Delete the “ShopBot” folder.

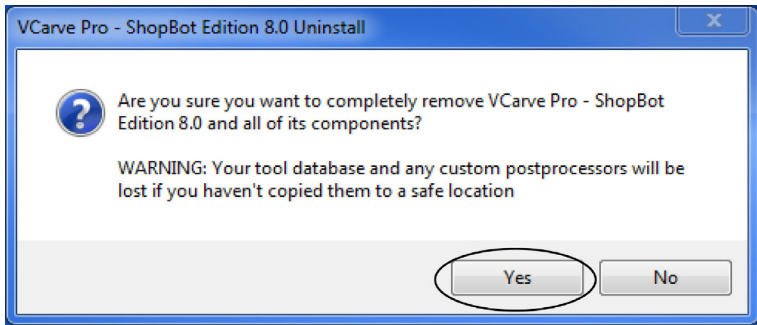


Uninstalling VCarve Pro Application

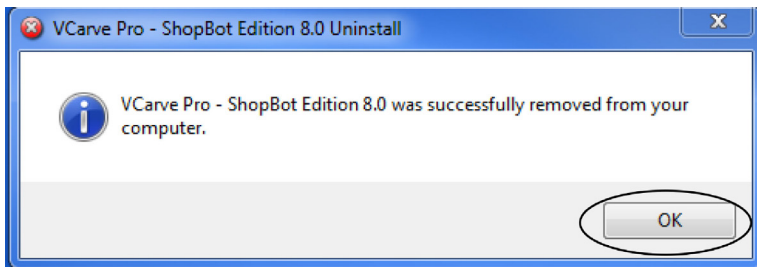
1. Scroll down to “VCarve Pro”, and click on folder. Click on “Uninstall”.



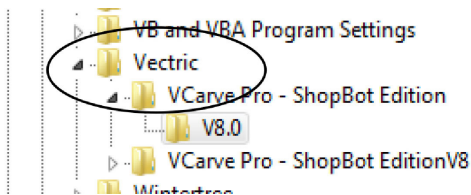
2. Click “Yes” when the “Are you sure you want to delete...” box pops up.



3. Click “OK” when “VCarve Pro Successful Removed” box pops up.



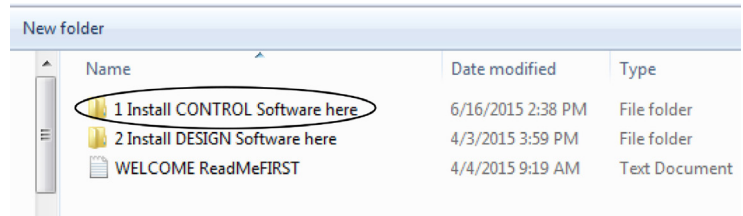
4. Close control panel folder.



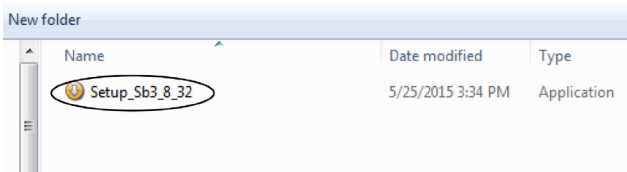
Installing ShopBot applications

1. Insert USB drive into USB port in computer.
2. Double-click on folder to view files.

3. Double-click on the folder called “1 Install CONTROL Software Here”.

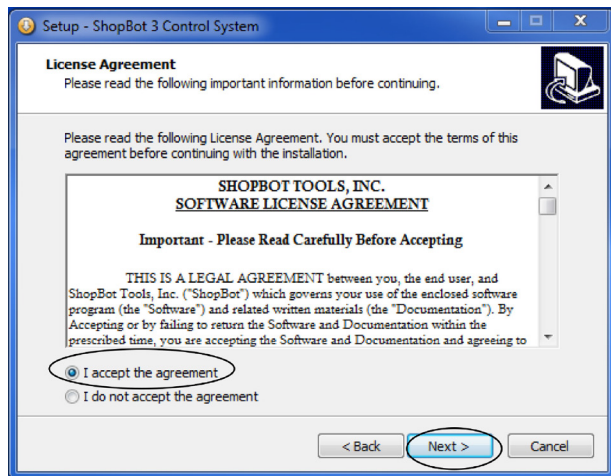
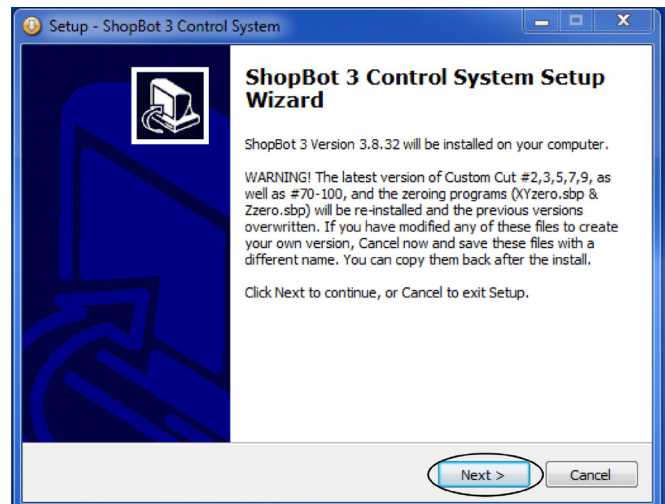


4. Double-click on “setup_sb3_8_32”.



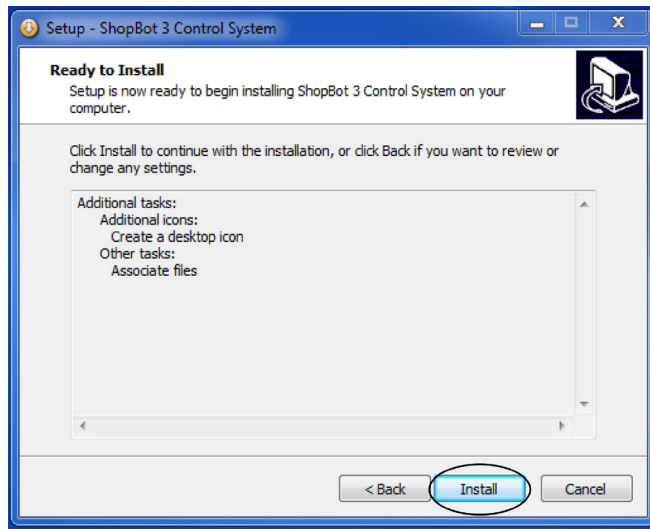
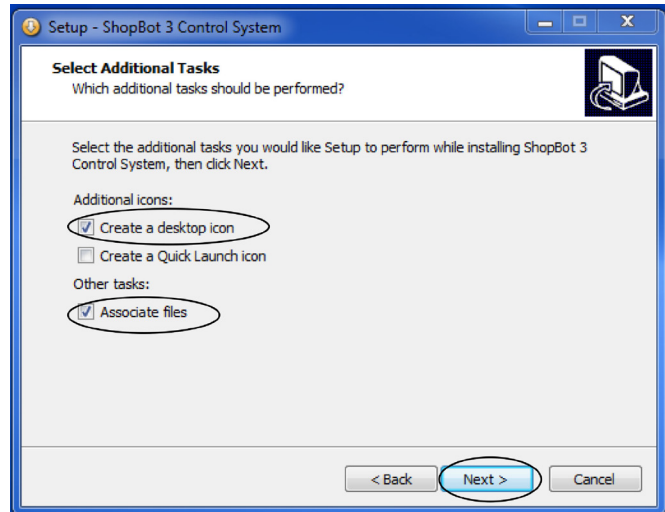
5. Click “Yes” when prompted “Do You Want to Allow the Following Program...”.

6. Click “Next” when ShopBot 3 Control System Setup Wizard appears.



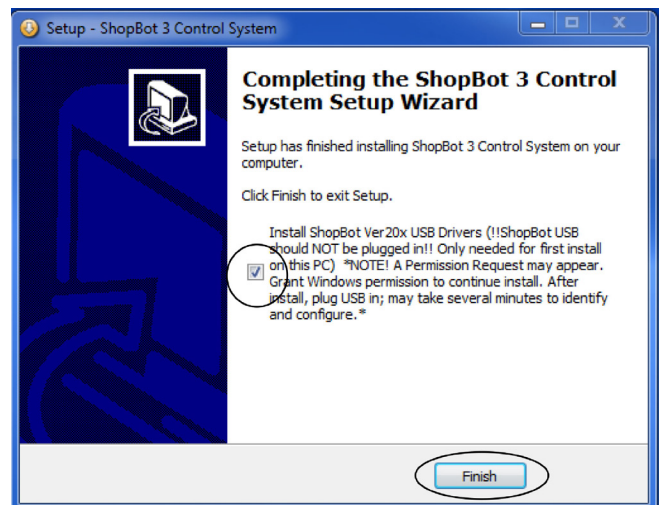
7. Click “I accept the agreement”, and “Next” when the License Agreement pops up.

8. At the Select Additional Tasks screen, click “Yes”.



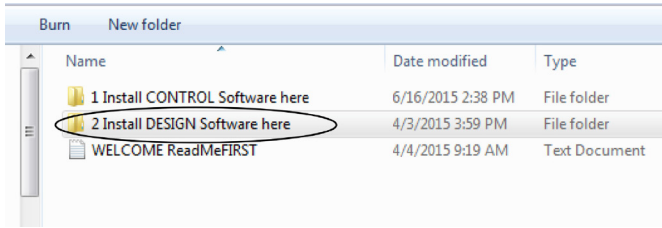
9. Click “Install” at Ready to Install screen.

10. When the “Completing ShopBot 3 Control System Setup Wizard” screen appears, click the “Finish” button.

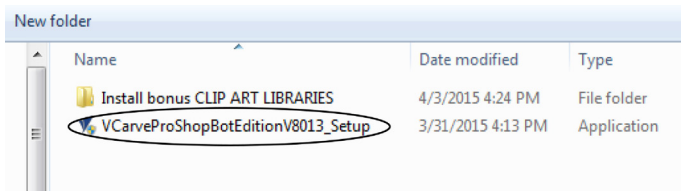


Installing VCarve Pro application

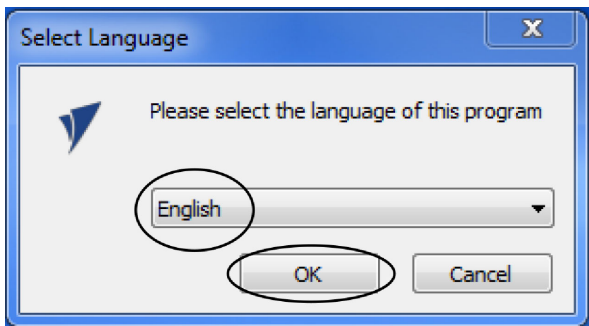
1. Double-click on the folder called “2 Install Design Software Here”.



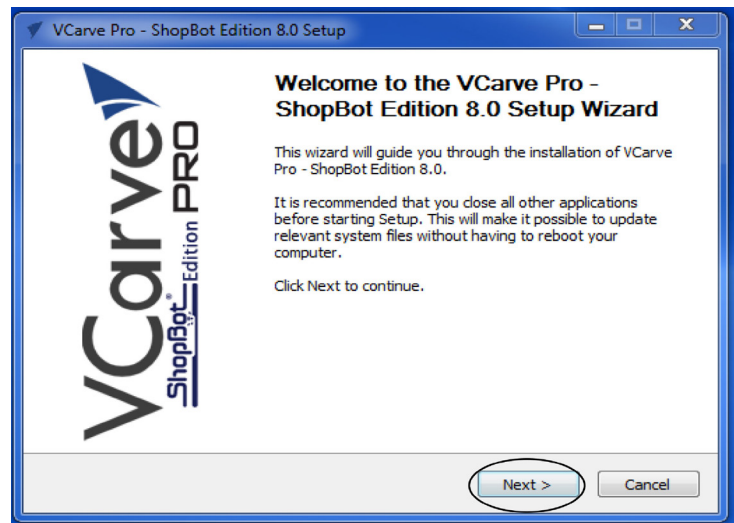
2. Double-click on “VcarveProShopBotEditionV8013_Setup”.



3. When prompted to select language, choose “English”, then click “OK”.



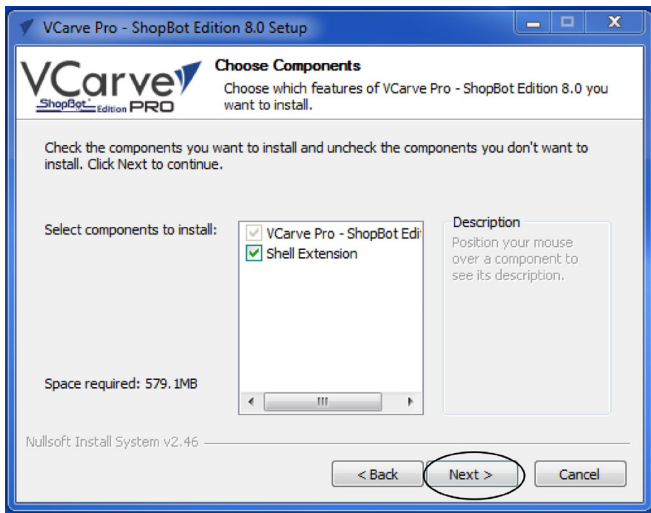
4. Click “Next” at the VCarve Pro Wizard prompt.



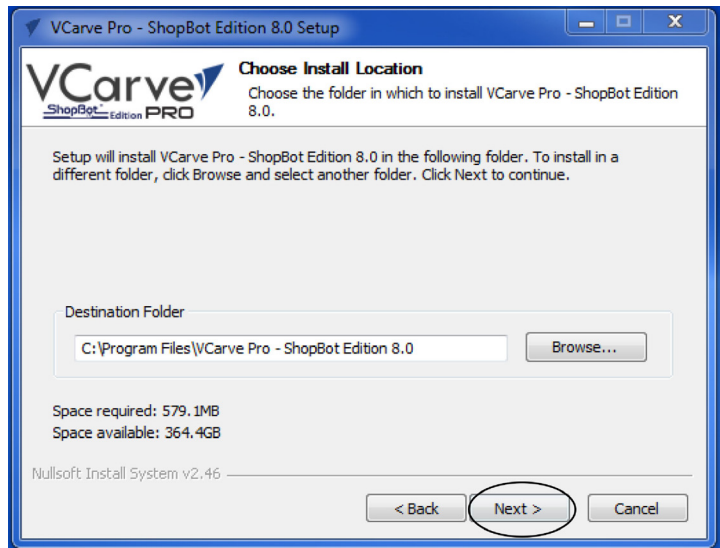
- 5. At the License Agreement page, click “I Agree”.

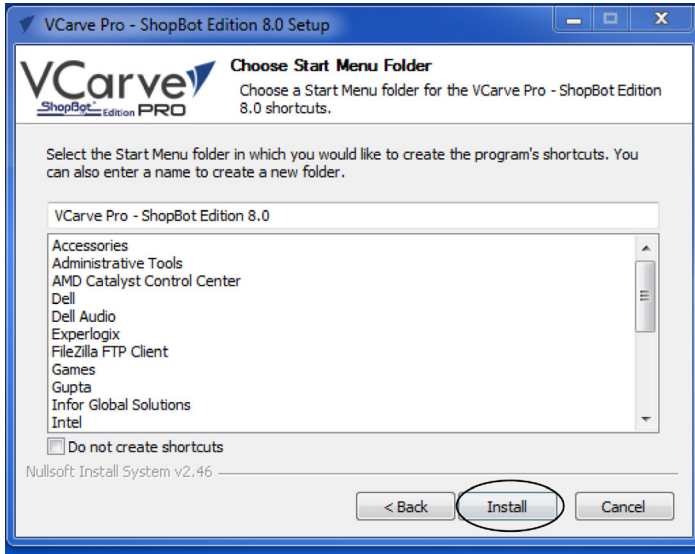


- 6. Click “Next” at the “Choose Components” screen.



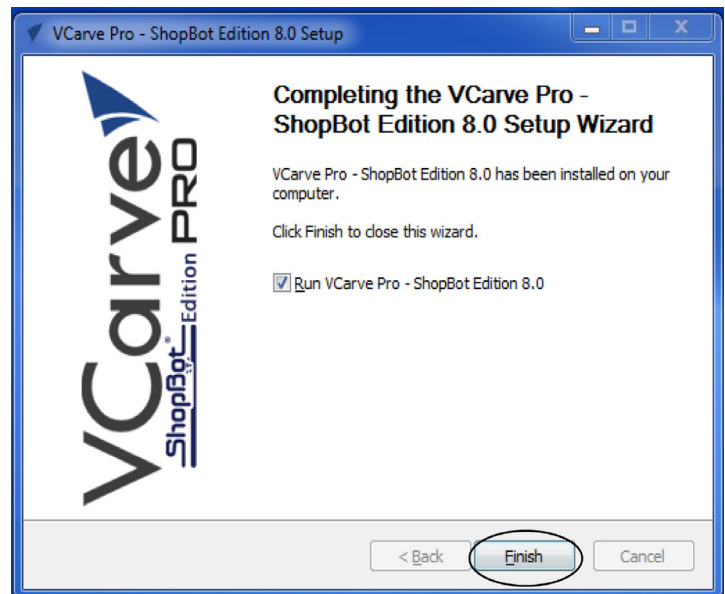
- 7. Click “Next” at the “Choose Install Location” screen.



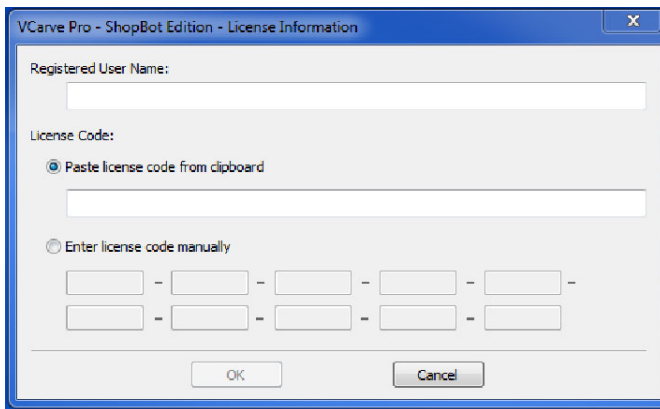


8. When the “Choose Start Menu Folder” screen appears, click “Install”.

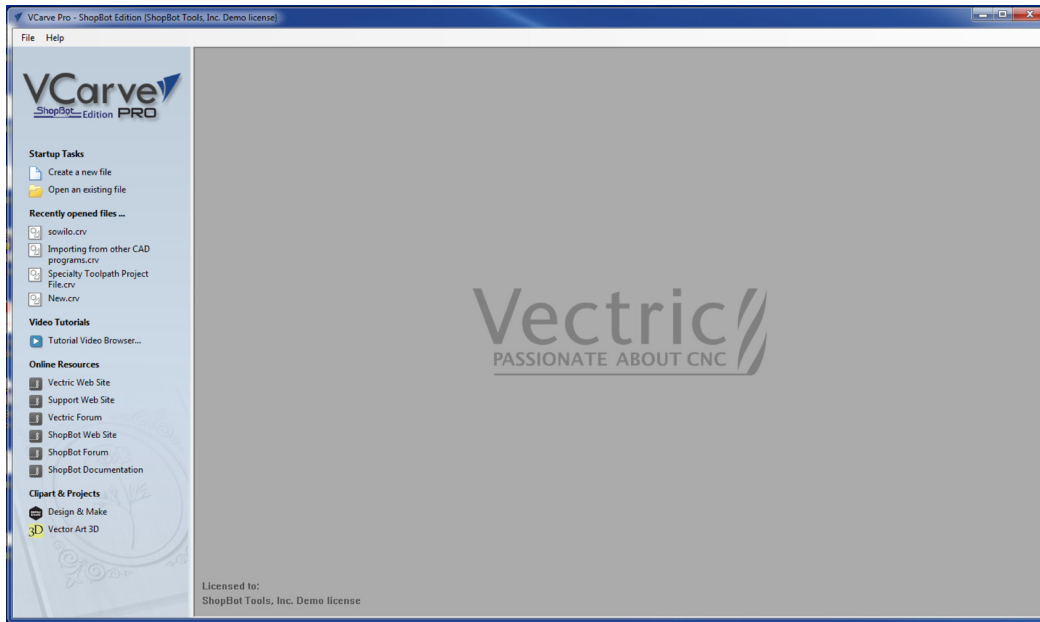
9. Click “Finish” to complete the VCarve Pro Wizard.



10. Enter registration information into registration window.



11. The VCarve Intro page will appear.



NOTE:

Microsoft Windows sometimes displays a message that says that there is an issue with the driver installation. If this message appears, ignore it for the time being and proceed with the rest of the software installation and machine setup. Try launching the ShopBot 3 software by clicking the shortcut icon on the computer (See “Launch the Software” section below). If ShopBot 3 fails to launch, turn to page 40 for “Help installing ShopBot Drivers on Microsoft Windows.”

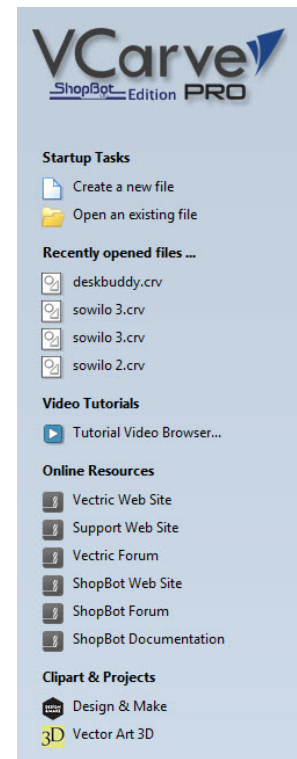
VCarve Pro...

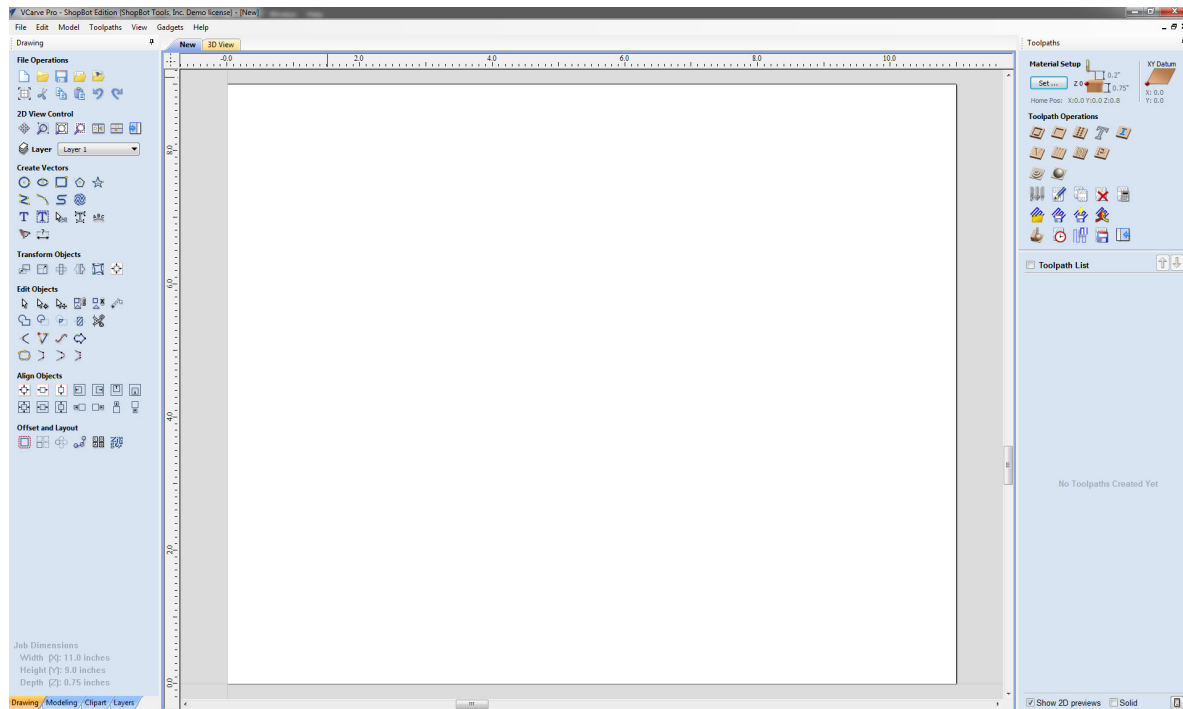
This program can be installed on two separate computers, such as the main ShopBot computer and a separate design computer.

When VCarve Pro is installed, it can be started through the Shortcut icon shown above or through the start menu.

When first using VCarve Pro, it will be necessary to enter the I.D. number attached to the cover of the print version of this guide sent with the machine.

Tutorials will be copied to the computer as part of the installation process. They are located at Tutorial Video Browser.





The graphic above is a basic overview of the program interface. There are many resources available about how to use this program. Some examples are tutorials, training at ShopBot, online training through ShopBot, help files provided in the program, and online support. Be sure to take advantage of these resources, many of them are listed on the next page.